

NovaClad Weather Resistant Phenolic Pipe Insulation

NovaClad is a pre weatherproofed BetaPlus Phenolic Pipe section, which allows both the zero perm weatherproof barrier and insulation to be installed in a single fix application, saving time, labour, waste and materials. The product is suitable for external and water resistant applications.

Contact GRM Insulation Solutions for information on high traffic areas and indigenous wildlife installation instructions.

Applications

HVAC Building Services. Suitable for Copper, Steel, Plastic and Stainless Steel Pipe work and small diameter Ductwork. Also suitable for Food Safe Environments in the white VentureClad finish.

Dimensions

Standard 1 metre length. Standard sizes from 15mm to 381mm

Nominal Density

40kg/m³

Thermal Conductivity

0.021W/m.K @ 10°C

Temperature Range

-180 to +120°C

Fire Classification

Class O to Building Regulations BS 476 - Parts 6&7

Quality Control

BS EN 9001

BS EN 14001

Other Product Properties

NovaClad is supplied with a factory applied chemical bore coating

Minimum 95% Closed Cell Structure to BS 4370

Foam Colour - Grey

Completely CFC/HFC Free

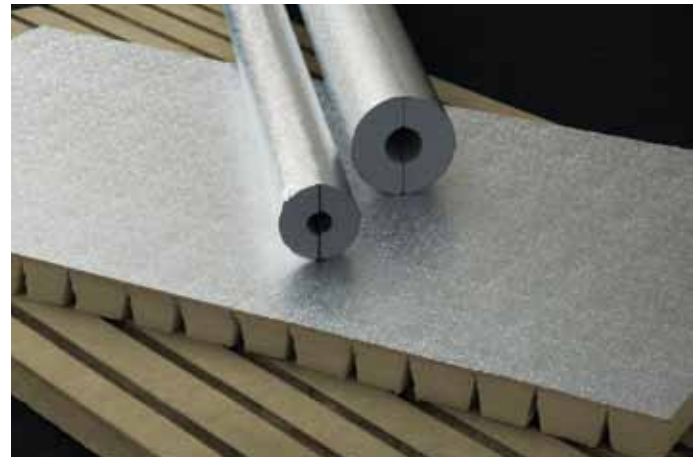
Zero Ozone Depletion Potential

Compressive Strength Parallel to Rise 180kPa +/- 40

BS 4370 Perpendicular to Rise 140kPa +/- 40

Tensile Strength Parallel to rise 200kPa +/- 40

Perpendicular to Rise 180kPa +/- 40



References

Health & Safety -

GRM Insulation Solutions Material Handling Data Sheet

GRM Insulation Products to meet the criteria of BS5422 - 2009

Compliance and Technical Advice is available from the Technical Department

For further information email technical@grmltd.co.uk or call 0161 301 6562.

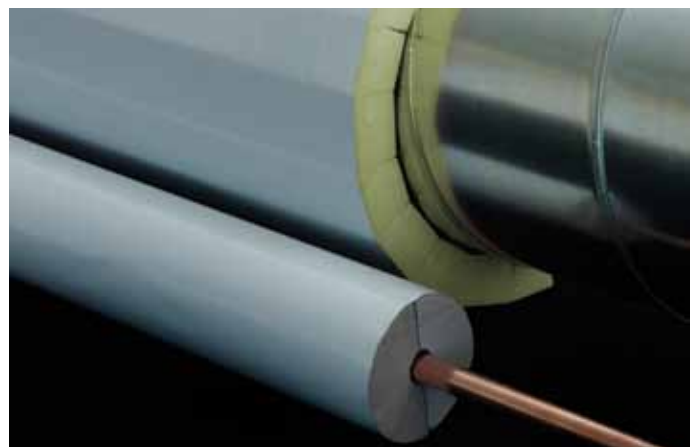
Available Finishes

Embossed

White

Black

Silver



Ensure you are stocking and installing **THE BEST.....**

Tel: 0161 297 0351 | Fax: 0161 230 7323 | email: technical@grmltd.co.uk

www.grmltd.co.uk

NovaClad Installation Guide

The following information is provided as a guide to installing the NovaClad Phenolic Pipe Insulation.

For specialist applications or specification advice please contact the GRM technical department; technical@grmltd.co.uk.

Surface Preparation

Ensure that the surface of the NovaClad Pipe Section is clear from contaminants and dry from moisture. Application temperatures should be considered when installing NovaClad and must not exceed -05°C or stored in temperatures exceeding -05°C.

Taping the Longitudinal Joint

Fig 1 shows the longitudinal joint at 10 o'clock or 2 o'clock position. It is imperative when applying the matching VentureClad closure tape to the section that no areas where water can settle are produced. By utilising this method a watershed should be designed.

Fig 2 shows the even application of the VentureClad closure tape. The recommended jointing tape has a pressure sensitive adhesive. When applying the matching VentureClad closure tape a constant reasonable pressure should be applied along the entire surface of the tape. A 'squeegee' or spatula should be used to achieve this.

Making certain the tape is centred on the joint, pull the release liner and adhere the tape over the joint. Use a "squeegee" to ensure that both joints are well sealed to the NovaClad section. GRM Insulation Solutions recommend where possible a 75mm wide tape should be used to ensure a thorough sealing of the systems joints.

Taping of the circumferential joints.

The circumferential joints of the adjoining NovaClad sections should be joined with the matching finish of VentureClad closure tape. A length of tape three inches greater than the diameter of NovaClad should be used to seal the sections together. Making certain the tape is centred on the butt joint. Pull the release liner and adhere the tape over the joint. Use a "squeegee" to ensure that both joints are well sealed both to the NovaClad and to the tape itself.

If required by the insulation specification stainless steel banding can be used to secure the NovaClad Sections. As an alternative and if permitted by the insulation specifiers VentureClad closure tape can also be used. GRM would recommend that for sections 114mm in diameter and above additional bands be considered at 2 per section and no less than 50mm from the end of the insulation section.

Note; Fig 3 shows the circumferential joints and optional banding application.

Please contact technical@grmltd.co.uk for additional advice on specific applications.

Pre-cut Tee's, Bends and Elbows are available for this range.

Fig 1



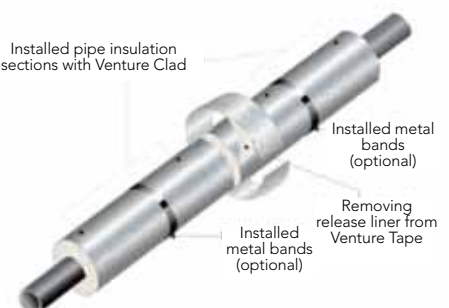
Fig 2

Removing release liner from Venture Tape



Fig 3

Installed pipe insulation sections with Venture Clad



Ensure you are stocking and Installing **THE BEST.....**

Tel: 0161 301 6562 | Fax: 0161 301 5444 | email: technical@grmltd.co.uk

www.grmltd.co.uk