

# Case Study :

## Royal Mail – Sorting Office

E16, London

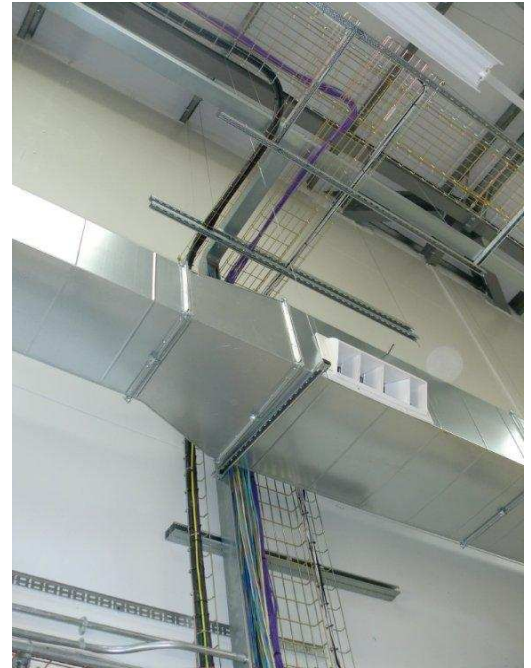
# CASE STUDY



Project information	
Project name / location	Royal Mail Sorting Office, London.
Project Team	M&E Contractor : LX Engineering Ltd.
Date	September 2011
Building type	Sorting office / 900 sq. metres
Suspended services	Lighting, Electrical containment and ductwork
Products	Gripple Trapeze / Gripple No.3 Standard hangers with M8 Adaptor fixings / Gripple No.2 Standard hangers




This Royal Mail sorting office in E16, London is 900 square metres. Long drops from the ceiling were required to achieve the correct level for the lighting and for the M&E and HVAC services. This proved the ideal project for using Gripple suspension solutions. The Gripple suspension solutions were used for the lighting, electrical services and ductwork.



Using Gripple Standard Hangers to suspend the lighting trunking delivered a number of benefits.

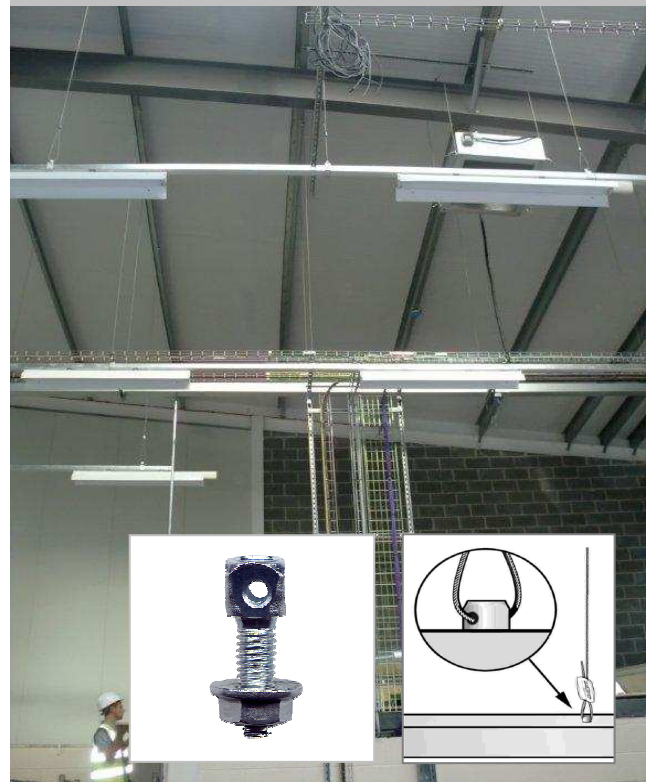
**Speed of installation :** The kits were supplied with the requested M8 stud end fixings, one of the twenty end fixing available from Gripple to suit various substrates.

Kits are also available in 1 metre to 10 metre lengths as standard, so there was no cutting channel, filing or painting, which not only saved time but improved the health & safety on site too.

**Aesthetics :** Using the 3mm discreet wire rope instead of 8mm threaded rod, adds to the airiness of the interior and doesn't compromise the natural light, leading to a better working environment.

**Environmental :** By using a lightweight system rather than threaded rod and channel, CO2 saving are made due to the more 'green' mode of manufacture of the Gripple solutions compared to heavy rod and channel.

500 x Gripple No.3 Hangers (90kg SWL) were used to support the lighting trunking

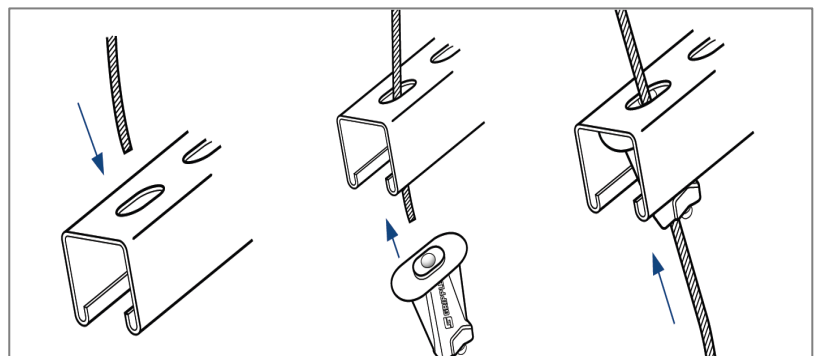
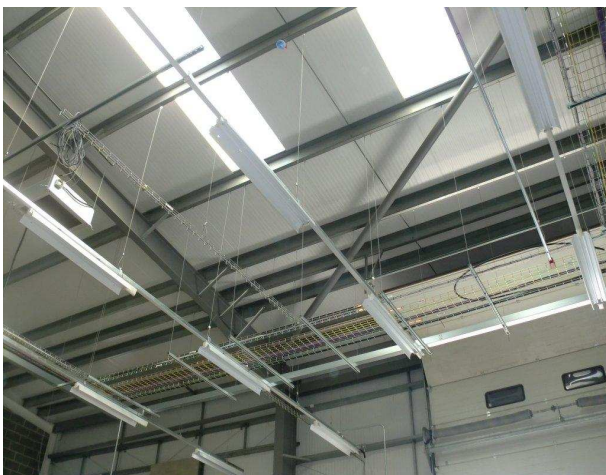


The contractor, LX Engineering Ltd, had used Grippler solutions on two supermarkets projects previously. They were keen to see what benefits and solutions Grippler would recommend for this type of project.

The Grippler Trapeze was suggested for suspending the containment. Here the Grippler Trapeze is fitted onto the end of the wire rope within the channel and is easily adjusted using the integral pin. It can be used in a multi-tier format too.



LX Engineering also took advantage of being able to suspend at angles with Grippler Standard hangers, using the nearest purlin rather than creating a new fixing point.



*“The ease of installation that Grippler provided me on this job compared to traditional methods was a major benefit to the project. The install time was at least 50% quicker than traditional methods. Overall Grippler is a lot less bulky, easier to adjust and work with. Using Grippler meant that I avoided snagging issues such as bends in long drops of rod that I have encountered before. I will definitely recommend Grippler.*”

**Joe Marks – Project Engineer – LX Engineering**

GripplE Standard Hangers were also used to suspend the rectangular ductwork too.



Visit  
[www.gripplE.com](http://www.gripplE.com)  
for more GripplE case studies