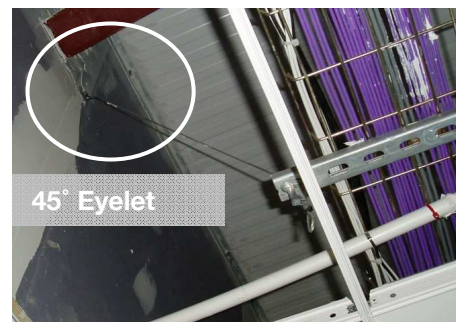
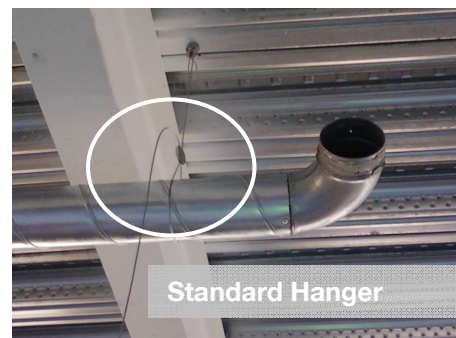
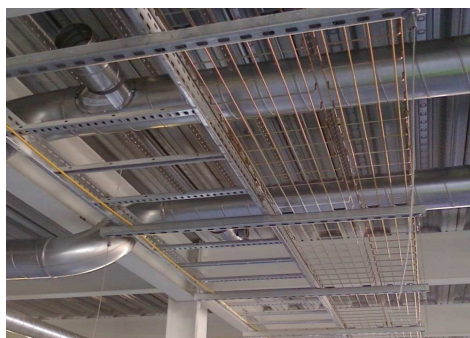


Project information	
Project name and location	Health Centre & Surgery, Wigan, Lancashire, UK.
Date	2009-2010
Consultant	JRB Environmental Design Ltd.
Building type and size	New build : Two floor Medical Centre - £5m
Application	Electrical and HVAC
Suspended services	Armoured - on ladder Twin cables security and data – on basket Spiral duct
Products	Approximately 2,500 Gripple units No.3 Trapeze, 90° Eyelet; 45° Eyelet (using both wood screw and shot-fire)



Project description

The Gripple Trapeze was used for single and for multi-tiered hanging of cable basket. The Trapeze was also used to suspend ladder containing heavy armoured cable. On the second floor, the 45° Eyelet end fixing was used to suspend at an angle. The Gripple No.2 Standard Hanger was used to suspend the spiral ductwork.

Comment

Neither the M&E nor the HVAC contractor had used Gripple previously. Both found the variety of Gripple solutions very fast and easy to use. In particular, the ability to suspend at an angle with Gripple, saved having to build special bracketry on a difficult upstairs suspension.