

Tonality

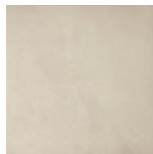
- Warm + cool tones
- Suitable for internal + external applications
- Architectural tile range



grestec.co.uk / 0345 130 2241



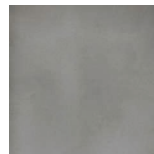
EFR30417
LRV: 64



EFR30409
LRV: 48



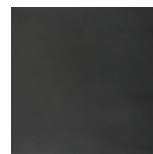
EFR30411
LRV: 34



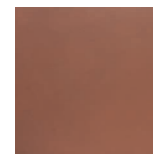
EFR30412
LRV: 18



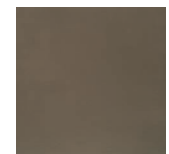
EFR30413
LRV: 12



EFR30422
LRV: 8



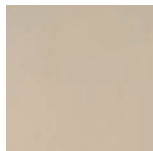
EFR30420
LRV: 17



EFR30421
LRV: 12



EFR30410
LRV: 59



EFR30418
LRV: 44

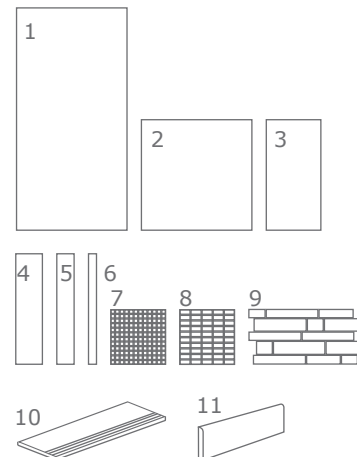


EFR30408
LRV: 34



EFR30419
LRV: 29

	SIZE (MM)	THICKNESS	FINISHES	
1	600x1200	10MM	NAT (R10)	STR (R11/C)
2	600x600	10MM	NAT (R10)	STR (R11/C)
3	300x600	10MM	NAT (R10)	STR (R11/C)
4	150x600	10MM	NAT (R10)	STR (R11/C)
5	100x600	10MM	NAT (R10)	STR (R11/C)
6	50x600	10MM	NAT (R10)	STR (R11/C)
7	22x22 MOS on 300x300	10MM	NAT (R10)	STR (R11/C)
8	27x57 MOS on 300x300	10MM	NAT (R10)	STR (R11/C)
9	RANDOM MOS on 300x300	10MM	NAT (R10)	STR (R11/C)
10	300x600 STEPTREAD	-	NAT	STR
11	90x300/ 90x600 SKIRTING	-	NAT	-



REQUEST SAMPLES, PRINT COLOURS MAY VARY.

FIND US ON:





Technical specification

Technical Characteristic	Standard	Average Values	
Water absorption	ISO 10545-3	0.04%	
Sizes	ISO 10545-2	± 0.2 %	Length and width
		± 5 %	Thickness
		± 0.2 %	Linearity
		± 0.2 %	Wedging
		± 0.2 %	Warpage
Bending strength	ISO 10545-4	51,1N/mm ²	
Deep abrasion resistance	ISO 10545-6	126mm ³	
Coefficient of linear thermal expansion	ISO 10545-8	6.2x10 ⁻⁶ oC ⁻¹	
Resistance to thermal shock	ISO 10545-9	Resistant	
Frost resistance	ISO 10545-12	Resistant	
Resistance to chemical products	ISO 10545-13	Resistant	
Resistance to light	DIN 51094	No change	
Slip resistance (Shod)	DIN 51130	Natural - R10	Structured- R11
Slip resistance (Barefoot)	D1N 51097	Structured- C	

Cleaning and maintenance advice

Initial washing

The initial washing is fundamental for good treatment results. The initial washing is aimed at removing any laying residues and building grime.

Product	Deterdek (1:5 diluted in water)
Coverage	Deterdek (5 l per 100m ²)
Equipment	Single-disc professional polisher, liquid vacuum cleaner and cloth
Procedure	<ul style="list-style-type: none"> • After the floor is swept and soaked with water, spread the diluted Deterdek onto the floor. • Then scour with single-disc professional polisher. • Vacuum the residue, rinse the floor well and then mop with a liquid vacuum cleaner or a cloth.

Routine maintenance

The aim of the routine maintenance is to remove dirt and scuff marks. Must be carried out regularly.

Product	Filacleaner (Diluted 1:50 in warm water)
Equipment	Cloth or mop (For large areas the use of a cleaning machine is recommended)
Procedure	<ul style="list-style-type: none"> • Dilute Filacleaner in warm water • Wipe a cloth wet with the solution over the floor • Rinse the floor in case of concentrated solutions of Filacleaner

Special maintenance

Special maintenance is carried out in case of very stubborn dirt, when the routine maintenance is not enough to restore the original look of the surface.

Product	Fila PS/87 (1:5 diluted in water)
Coverage	5 l per 100m ² (when diluted 1:5)
Equipment	Single-disc professional polisher
Procedure	<ul style="list-style-type: none"> • Dilute Fila PS/87 in 1:5 in water • Apply to the floor previously soaked with water and leave for a few minutes • Scrub with a single disc professional polisher • Mop up residue with a liquid vacuum cleaner or cloth

FIND US ON:

