



RootSpace

Soil Structure System

Includes:

- Product Information Sheets
- Technical Data Sheets

RootSpace

SOIL STRUCTURE SYSTEM

The GreenBlue Urban **RootSpace** system is essentially a soil support system – designed for maximum soil and rooting volume, to be ‘utility friendly’, with economic freight and industry leading strength characteristics.

In 2001, GreenBlue Urban produced the world’s first purpose made commercial structural soil cell for urban tree planting. Since that time, thousands of trees have benefited and continue to benefit, from access to uncompacted soil volumes – beneath heavily engineered pavements and roadways.



BENEFITS

- Interlocking recycled material panels give huge strength
- Open structure – fast filling and class leading soil void ratio – more soil for the tree
- Fast installation reduces labour costs
- Less plastic – reduces costs
- Unique patented Airflow lid – encourages movement of air allowing the soil to breathe
- Excellent space provision for integrating utilities
- Lid designed to allow fast re-excavation for utility emergencies
- Open lattice – high strength but maximum soil space



important – please read these instructions fully before starting assembly
For further help telephone our technical helpline on 01580 830800

RootSpace

SOIL STRUCTURE SYSTEM

RootSpace – GreenBlue Urban’s new soil support system, gathers up all the years of experience as leaders in the field, to offer the definitive urban tree root protection product.

Essentially, urban tree success is all about the soil the tree is planted in – a large volume of uncompacted, good quality soil is required for the establishment and long term health of a tree in paving.

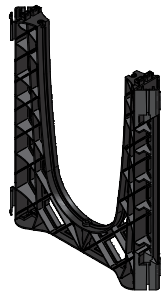
Predict – how much soil your tree will require as it matures

Provide – give the tree enough quality uncompacted soil in zones into which it can freely spread its roots

Protect – Look after the vital soil structure itself – overcome potentially fatal compaction of the soil and ensure access to drainage and ventilation.

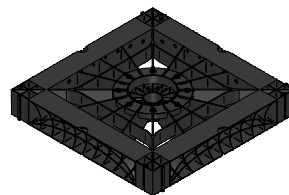
RootSpace 600 Upright

Interlocking high strength vertical panel – designed for fast location and connection with neighbouring panels to build extensive structures quickly.



RootSpace Airflow QR (Quick Release) Top

Designed to allow air movement over the soil profile, fast interconnection with neighbouring cap and class leading structural strength. Central aperture designed to collect debris and diffuse water flow into soil zone, reducing potential for water flow erosion.



RootSpace 600 Infill

RootSpace is the only structural soil system to provide an optional side panel for increased stability against lateral ground movements. Can be used around perimeter of the installation where there is a likelihood of post planting subterranean ground settlement



Typical Installation Specification

- See our standard tree pit details for a complete tree pit incorporating RootSpace. GBU1015 is shown in this section

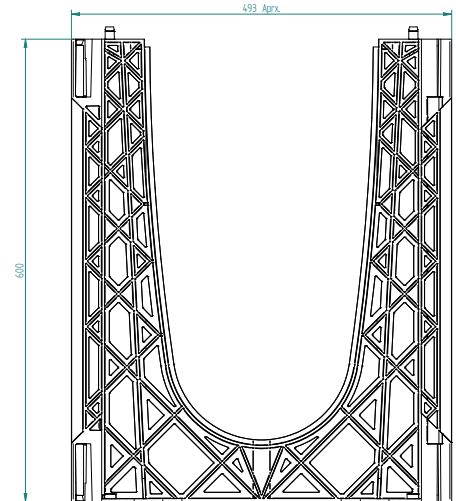
Integrates with other Arborsystem products such as:

- Arborvent
- RootDirector
- RootForm
- Arborflow 100
- Arborguy

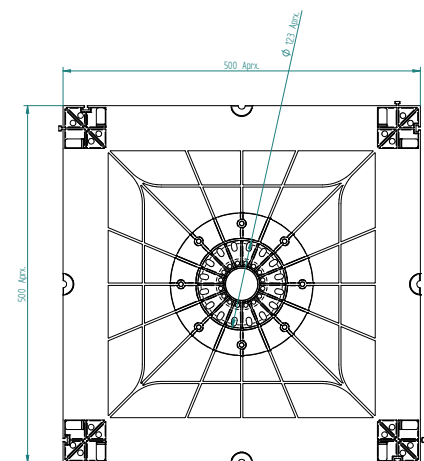
RootSpace

SOIL STRUCTURE SYSTEM

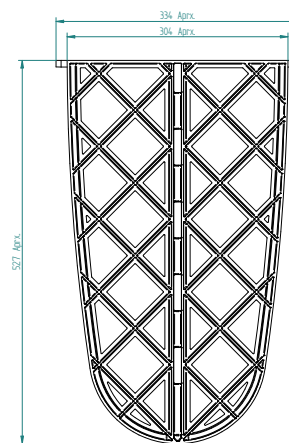
Type:	600 Upright
Code:	GBURAC600A
Dimensions:	500mm x 600mm x 90mm
Weight:	1.93kg
Material:	Recycled polypropylene
Colour:	Black
Finish:	Natural
Load bearing capacity:	260kpa



Type:	Airflow QR (Quick Release) Top
Code:	GBURAC500A
Dimensions:	550 x 550 x 80mm
Weight:	2.54kg
Material:	Recycled polypropylene
Colour:	Black
Finish:	Natural
Load bearing capacity:	260kpa



Type:	600 Infil
Code:	GBURSP65PA
Dimensions:	585 x 310 x 40mm
Weight:	0.94kg
Material:	Recycled polypropylene
Colour:	Black
Finish:	Natural
Load bearing capacity:	260kpa



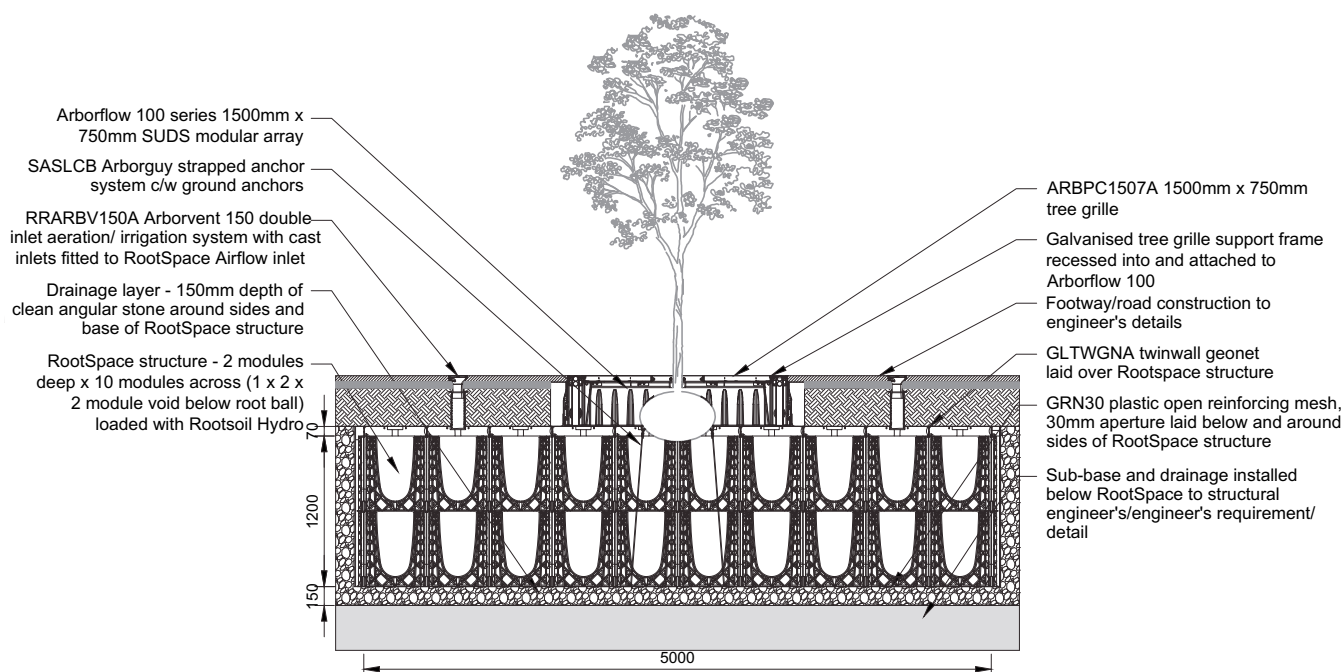
important – please read these instructions fully before starting assembly
 For further help telephone our technical helpline on 01580 830800

RootSpace

GBU1015 TREE PIT SYSTEM INSTALLATION

Package includes:

- GBURAC600A RootSpace uprights - 432 No. 500mm x 500mm x 600mm
 - GBURAC500A RootSpace Airflow deck - 96 No. 500mm x 500mm x 70mm
 - Rootsoil Hydro topsoil to fill RootSpace and RootDirector spaces (including root ball volume) - allow 30.85 Cu. m per tree. Additional allowance needs to be made for settlement
 - RootStart Mycorrhiza - apply to tree pit at time of planting in accordance with manufacturer's recommendations - allow 200g per tree
 - RRARBVI50A Arborvent 150 inlet aeration system with cast inlets - 4 per tree
 - Arborflow 100 series SUDS modular array - 6 No. 750mm linear modules and 4 No. corner modules
 - GLTWGNA twinwall geonet - 25 Sq. m
 - GBUGRN30 plastic open reinforcing mesh, 30mm aperture - 50 Sq. m
 - SASLCB Arborguy strapped anchor system - large
 - ARBPC1507A 1500mm x 750mm tree grille
- Note:** Special drive rod required for SASLCB installation



Load Bearing Geonet

DATASHEET



Raw Material

Grid	PET
Nonwoven	150 g/m ² PP
Coating	Polymer

Weight

EN ISO 9864	~420 g/m ²
--------------------	-----------------------

Ultimate tensile strength

EN ISO 10.319	
Longitudinal	≥ 40kN/m
Transversal	≥ 40kN/m

Strain at nominal tensile strength

EN ISO 10.319	
Longitudinal	≥ 12.5%
Transversal	≥ 12.5%

Mesh size of the geogrid

Width x Length	25 x 25 mm
-----------------------	------------

Opening size

EN ISO 12956	~ 0,10 mm
---------------------	-----------

Opening size

EN ISO 11058	~75 x 10 ⁻³ m/s
---------------------	----------------------------

Standard Dimension

Width x Length	1m x 100m
-----------------------	-----------

No responsibility is accepted for any change in product properties due to environmental influences and / or improper application or handling. Rights are reserved to modify the product to effect improvements.

RootSpace

SOIL STRUCTURE SYSTEM



RootSpace is highly adaptable to accept services of all types. GreenBlue Urban have introduced a detectable services indicator tape to ensure services can be located after installation for peace of mind.

Table:

Material	LDPE / SS wire
Dimensions	150mm wide x 100m long roll
Finish	Natural
Colour	Yellow with black text

Key Benefits:

- Premium quality plastic warning tape
- C/W 2 stainless steel tracer wires
- Allows location of buried pipes and cables from above ground
- Ensures services installed within RootSpace safely