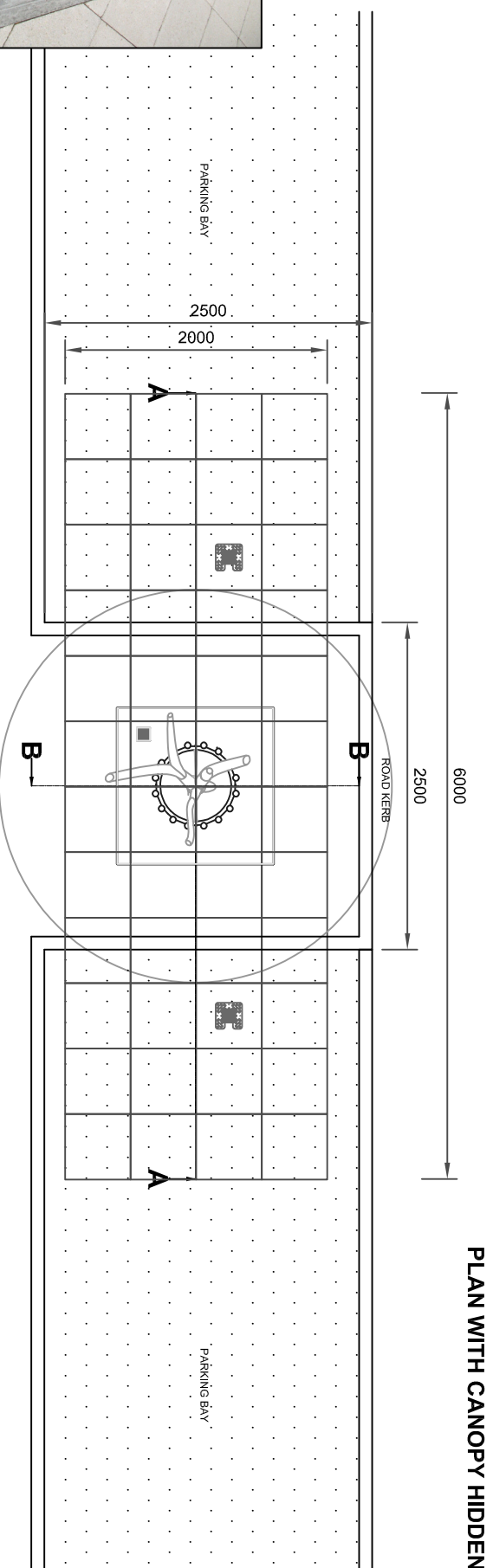


**© Copyright GreenBlue Urban**

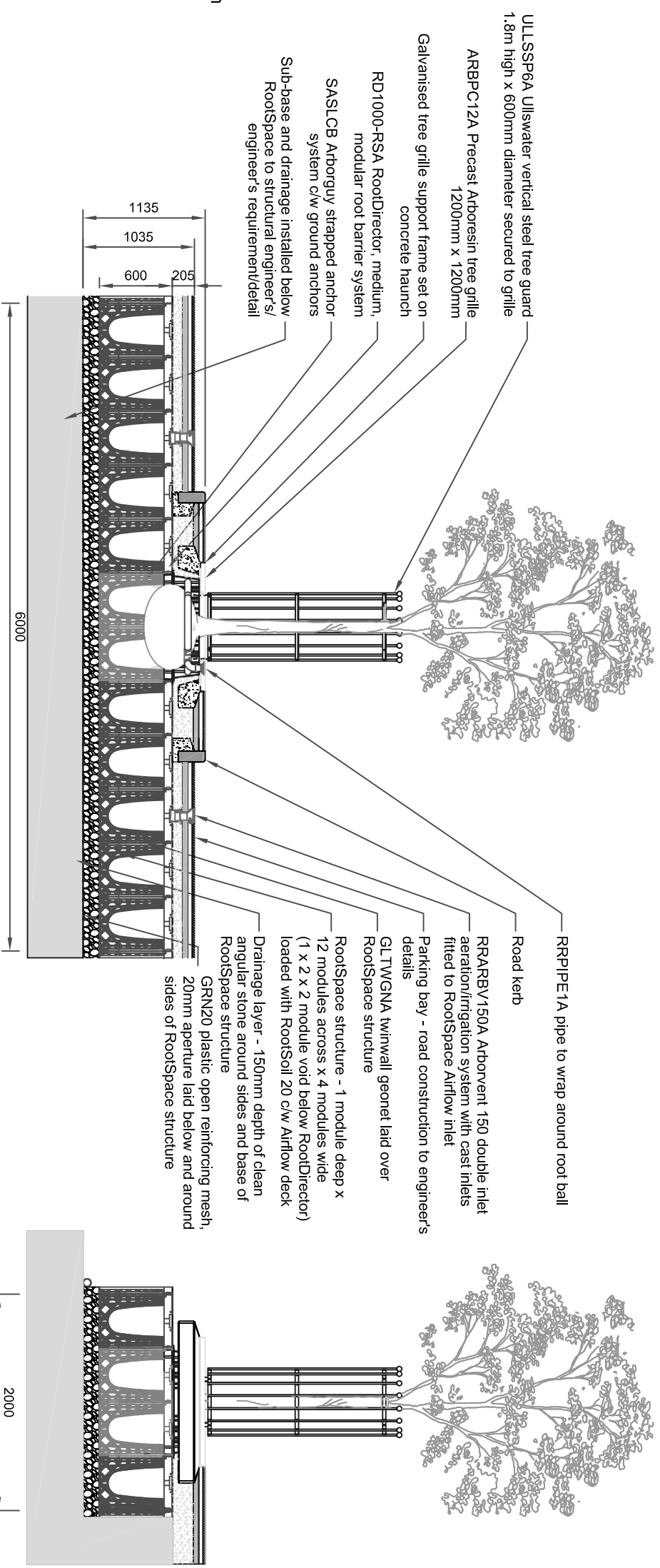
All dimensions and details are approximate and must be checked on site not scaled from the drawing.  
 No part of this drawing can be reproduced or transmitted by any means electronic or mechanical including photocopy without prior permission in writing from GreenBlue Urban.  
**Package includes the following GreenBlue Urban products:**

- GBURAC600A RootSpace uprights - 108 No. 500mm x 500mm x 600mm per tree
- GBURAC500A RootSpace Airflow deck - 44 No. 500mm x 500mm x 70mm
- Rootsoil 20 to fill RootSpace and RootDirector spaces (including root ball volume) - allow 8.2 cu. m per tree. Additional allowance needs to be made for settlement
- RootStart Mycorrhiza - apply to tree pit at time of planting in accordance with manufacturer's recommendations - allow 200g per tree
- RRPIPE1A 3m pipe to go around the root ball connecting to the Precast ArboResin tree grille
- RRARBV150A Arborvent 150 Double inlet aeration/irrigation system with cast inlets including 2m 100mm diameter pipe
- RD1000-RS RootSpace RootDirector - medium
- GLTWGNA twinwall geonet - 15m<sup>2</sup>
- GRN20 plastic open reinforcing mesh, 20mm aperture - 35 sq. m
- SASLCB Arborguy strapped anchor system secured with ground anchors
- ULLSSP6A Ullswater vertical steel tree guard 1.8m high x 600mm diameter secured to grille
- ARBPC12A Precast Arboresin tree grille 1200mm x 1200mm
- GLGTAA Tree guard tie

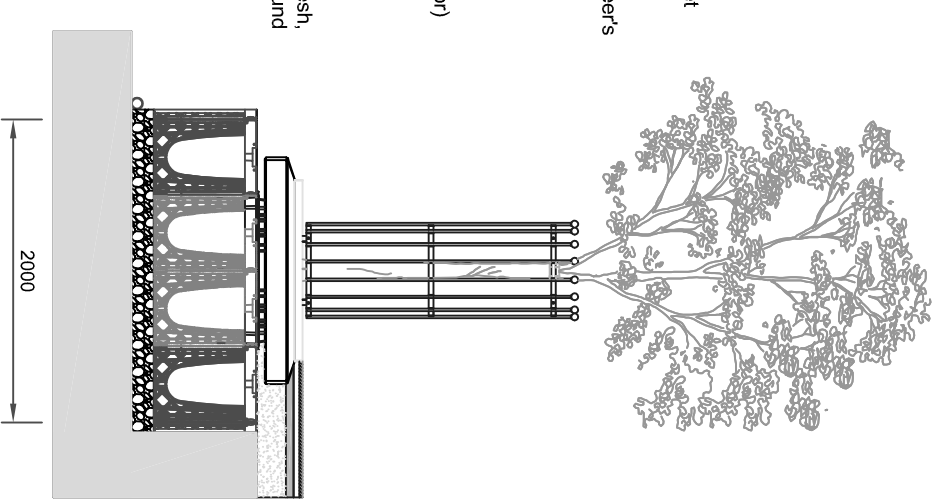
**Note:**  
 Special drive rod kit required for SASLCB installation. 20% additional for with the Geotextile and Reinforcing Mesh to allow for overlap and cutting requirements.  
 For heavy load applications, install RootSpace side panels to installation as directed by engineer.  
**Structural engineer's note:**  
 For increased strength and stability in soft ground conditions, specify RootSpace modules to incorporate side panel inserts to tree pit perimeter



**PLAN WITH CANOPY HIDDEN**



**SECTION A-A**



**SECTION B-B**

PROJECT

**TREE PRODUCT PACKAGES**

DRAWING TITLE  
**TREE PIT SYSTEM INSTALLATION  
 HIGHWAY ROOTSPACE BUILD OUT  
 TREE PIT DETAIL**

CLIENT

DRAWING NUMBER

**GBU 2017**

REV NO

**A**

DATE

**FEB '17**

SCALE

**1:50 @ A3**

DRAWN BY

**TES**



Northpoint, Compass Park, Bodiam,  
 East Sussex, TN32 5BS  
 Sales and Service: +44 (0)1580 830800  
 Website: [www.greenblueurban.com](http://www.greenblueurban.com)