



The Plastic Injection Moulders

Furniture Fittings & Tube Inserts

June 2013 | V1.0



Contents

Introduction	Page 1
Square Inserts	Page 2 - 3
Round Inserts	Page 4 - 5
Rectangular Inserts	Page 6 - 7
Domed and Shaped Inserts	Page 8 - 9
Ovals	Page 10
Threaded Inserts	Page 11
Side Entry Inserts	Page 12
Bolt and Nut Cap Covers	Page 12
Ferrules and End Tips	Page 13
Desk Components	Page 14
Stand-off Feet	Page 14
Angled Feet	Page 15
Adjustable Tilt Feet	Page 15
Height Adjustable Feet	Page 16
Adjustable Table Legs	Page 17
Miscellaneous Feet	Page 17
Tube Adjusters	Page 18
Handwheels	Page 19
Stacking Chair Buffers	Page 20
Pin Clips	Page 20
Rotary Line Fittings	Page 20
Props Tops	Page 21
Tube Connecters	Page 21
Tent Components	Page 22
Saddle (Dished) Washers	Page 22
Anti-Rattle Rings	Page 23
Saddle Feet	Page 23
Crutch Armbands	Page 24
Scaffold Protectors	Page 24
Screw Hole Covers	Page 25
Screw Hole Cover Barrells	Page 26
Screw Washer Cover Caps	Page 27
Screw Cover Caps	Page 28
Disclaimer	



T 01295 264533
E sales@glazpart.co.uk
www.glazpart.com

1

Introduction



Welcome to the latest Glazpart Furniture Fittings & Tube Inserts catalogue. Totally revised, this is our most comprehensive overview of our ever expanding product range dedicated to the furniture, fabrication and engineering industries.

New in this edition are CAD images to give a clear view of our products. These images are available from your customer services contact as [.jpeg](#), [3D adobe PDF](#) or [.stp files](#) to assist you and your design team in the design and development of your products.

All the part numbers listed are, unless otherwise detailed in the tables, for the **BLACK** product. For all other colours please contact Glazpart customer services.

New this year is the marketing of our colour spraying service where if required parts can be Kolorbond sprayed to **ANY** RAL, BS or swatch matched colour for special applications.

We hope you find this document useful and should you have any feedback please contact me;

Regards

Dean Bradley

Dean Bradley,
Sales and Marketing Manager

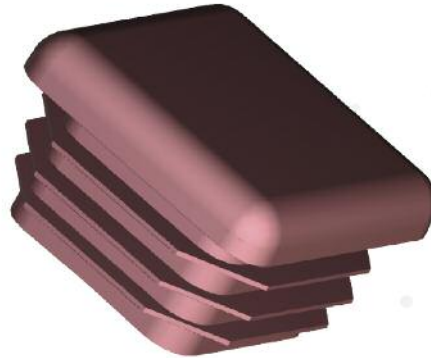
dbradley@glazpart.co.uk

Note: I would like to take this opportunity to acknowledge the work of Glazpart's Andy Lobban for his input in the development of this catalogue.





Metric Square Inserts*



Square inserts may be fitted into square tubing giving a neat, smart finish. Our ribbed square inserts cover up sharp tube edges and are fitted easily and securely into a variety of gauges.

*Parts are metric equivalents

Black Colour Part No.	Size	Item Description	Gauge Range	Standard Quantity
Ribbed Insert				
1032	12.7 mm	Ribbed (Sparked)	1.2 - 1.6 mm	10,000
1540	15.8 mm	Ribbed (Sparked)	0.9 - 1.6 mm	5,000
133305	19.7 mm	Ribbed (Sparked)	1.0 - 2.0 mm	5,000
126939	20.0 mm	Ribbed (Sparked)	1.0 - 2.5 mm	5,000
1005	22.2 mm	Ribbed (Sparked)	1.0 - 2.0 mm	3,000
1000	25.4 mm	Ribbed (Sparked)	1.0 - 2.0 mm	2,500
1006	25.4 mm	Ribbed (Sparked)	2.0 - 3.0 mm	2,500
1001	25.4 mm	Ribbed (Polished)	1.0 - 2.0 mm	2,500
2287	28.5 mm	Ribbed (Sparked)	1.0 - 2.0 mm	2,000
133481	30.0 mm	Ribbed (Sparked)	1.0 - 2.0 mm	2,000
1286	30.0 mm	Ribbed (Sparked)	2.0 - 3.0 mm	2,000
133462	31.7 mm	Ribbed (Sparked)	1.0 - 2.0 mm	2,000
135712	31.7 mm	Ribbed (Sparked)	2.0 - 3.0 mm	2,000
2264	34.9 mm	Ribbed (Sparked)	1.0 - 2.0 mm	1,000
133301	38.1 mm	Ribbed (Sparked)	1.0 - 2.0 mm	1,000
1307	38.1 mm	Ribbed (Sparked)	2.0 - 3.0 mm	1,000
1580	40.0 mm	Ribbed (Sparked)	1.0 - 2.0 mm	500
1576	40.0 mm	Ribbed (Sparked)	2.0 - 3.0 mm	500
2268	44.4 mm	Ribbed (Sparked)	1.0 - 2.0 mm	500
135713	44.4 mm	Ribbed (Sparked)	2.0 - 3.0 mm	500
1547	50.8 mm	Ribbed (Sparked)	1.0 - 2.0 mm	500
1556	50.8 mm	Ribbed (Sparked)	2.0 - 3.0 mm	500
2385	60.0 mm	Ribbed (Sparked)	3.0 - 5.0 mm	325
Plain Insert				
2099	45.0 mm	Plain (Sparked)	2.0 mm	1,000
2103	80.0 mm	Plain (Sparked)	5.0 mm	150
2101	100.0 mm	Plain (Sparked)	8.0 mm	75

Options:

WHITE

BLACK

SILVER

GREY

Others available - POA

Available finishes:

FINISH	Polished (Gloss)	Fine (Matt)	Sparked (Rough)
VDI No.	33	42	46

Made in UK





Imperial Square Inserts

Square inserts may be fitted into square tubing giving a neat, smart finish. Our ribbed square inserts cover up sharp tube edges and are fitted easily and securely into a variety of gauges.



Black Colour Part No.	Size	Item Description	Gauge Range	Standard Quantity
Ribbed Insert				
1032	1/2"	Ribbed (Sparked)	16 - 18G	10,000
1540	5/8"	Ribbed (Sparked)	16 - 20G	5,000
133305	3/4"	Ribbed (Sparked)	14 - 20G	5,000
1005	7/8"	Ribbed (Sparked)	14 - 20G	3,000
1000	1"	Ribbed (Sparked)	14 - 20G	2,500
1006	1"	Ribbed (Sparked)	10 - 14G	2,500
1001	1"	Ribbed (Polished)	14 - 20G	2,500
2287	1 1/8"	Ribbed (Sparked)	14 - 20G	2,000
133462	1 1/4"	Ribbed (Sparked)	14 - 20G	2,000
135712	1 1/4"	Ribbed (Sparked)	10 - 14G	2,000
2264	1 3/8"	Ribbed (Sparked)	14 - 20G	1,000
133301	1 1/2"	Ribbed (Sparked)	14 - 20G	1,000
1307	1 1/2"	Ribbed (Sparked)	10 - 14G	1,000
135713	1 3/4"	Ribbed (Sparked)	10 - 14G	1,000
2268	1 3/4"	Ribbed (Sparked)	14 - 20G	1,000
1547	2"	Ribbed (Sparked)	14 - 20G	500
1556	2"	Ribbed (Sparked)	10 - 14G	500

Options: WHITE BLACK SILVER GREY

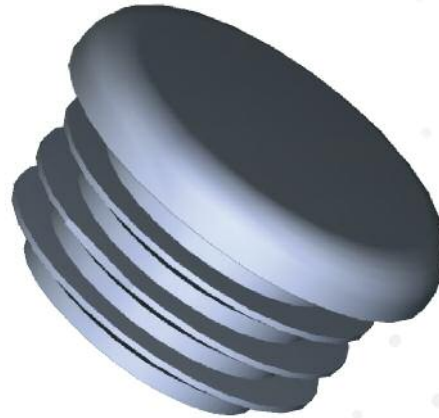
Others available - POA

Available finishes:

FINISH	Polished (Gloss)	Fine (Matt)	Sparked (Rough)
VDI No.	33	42	46



Metric Round Inserts



Round inserts may be fitted into round tubing giving a neat, smart finish. Our ribbed round inserts cover up sharp tube edges and are fitted easily and securely into a variety of gauges.

Black Colour Part No.	Size	Item Description	Gauge Range	Standard Quantity
Ribbed Insert				
1010	12.7 mm	Ribbed (Sparked)	1.2 - 1.6 mm	10,000
1009	15.8 mm	Ribbed (Sparked)	1.0 - 2.0 mm	5,000
1008	19.0 mm	Ribbed (Sparked)	1.0 - 2.0 mm	5,000
1011	22.2 mm	Ribbed (Sparked)	1.0 - 2.0 mm	4,000
1029	25.4 mm	Ribbed (Sparked)	1.0 - 2.0 mm	4,000
1012	25.4 mm	Ribbed (Sparked)	2.0 - 3.2 mm	4,000
134079	28.5 mm	Ribbed (Sparked)	1.0 - 2.0 mm	2,500
133466	31.7 mm	Ribbed (Sparked)	1.0 - 2.0 mm	2,500
1513	31.7 mm	Ribbed (Sparked)	2.0 - 3.0 mm	2,500
1593	38.1 mm	Ribbed (Sparked)	1.0 - 2.0 mm	1,500
2236	41.2 mm	Ribbed (Sparked)	1.0 - 2.0 mm	1,000
1395	44.4 mm	Ribbed (Sparked)	1.0 - 2.0 mm	1,000
127843	48.0 mm	Ribbed (Sparked)	2.0 - 3.0 mm	500
1409	48.0 mm	Ribbed (Sparked)	3.5 - 4.5 mm	500
1390	50.8 mm	Ribbed (Sparked)	1.0 - 2.0 mm	500
1418	50.8 mm	Ribbed (Sparked)	2.0 - 3.2 mm	500
1398	57.1 mm	Ribbed (Sparked)	2.0 - 3.2 mm	500
2346	60.3 mm	Ribbed (Sparked)	2.0 - 3.2 mm	400
1404	63.5 mm	Ribbed (Sparked)	1.0 - 2.0 mm	400
1401	63.5 mm	Ribbed (Sparked)	2.7 - 4.2 mm	400
126367	100.0 mm	Ribbed (Sparked)	4.5 - 6.0 mm	200
1805	110.0 mm	Ribbed (Sparked)	4.5 - 6.0 mm	100

Options:

 WHITE

 BLACK

 SILVER

 GREY

Others available - POA

Available finishes:

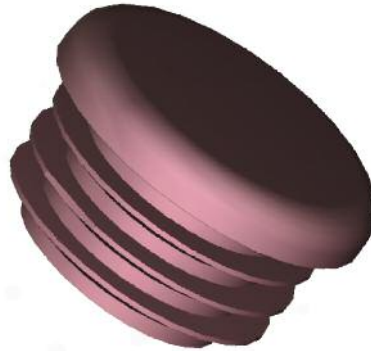
FINISH	Polished (Gloss)	Fine (Matt)	Sparked (Rough)
VDI No.	33	42	46

Made in UK





Imperial Round Inserts



Round inserts may be fitted into round tubing giving a neat, smart finish. Our ribbed round inserts cover up sharp tube edges and are fitted easily and securely into a variety of gauges.

Black Colour Part No.	Size	Item Description	Gauge Range	Standard Quantity
Ribbed Insert				
1010	1/2"	Ribbed (Sparked)	16 - 18G	10,000
1009	5/8"	Ribbed (Sparked)	14 - 20G	5,000
1008	3/4"	Ribbed (Sparked)	14 - 20G	5,000
133385	3/4"	Ribbed (Thick Head + Polished)	14 - 20G	5,000
1011	7/8"	Ribbed (Sparked)	14 - 20G	4,000
1029	1"	Ribbed (Sparked)	14 - 20G	4,000
1012	1"	Ribbed (Sparked)	10 - 14G	4,000
134079	1 1/8"	Ribbed (Sparked)	14 - 20G	2,500
133466	1 1/4"	Ribbed (Sparked)	14 - 20G	2,500
133600	1 1/4"	Ribbed (Thick Head + Polished)	14 - 20G	2,000
1513	1 1/4"	Ribbed (Sparked)	10 - 14G	2,500
1593	1 1/2"	Ribbed (Sparked)	14 - 20G	1,500
2236	1 5/8"	Ribbed (Sparked)	14 - 20G	1,000
1395	1 3/4"	Ribbed (Sparked)	14 - 20G	1,000
1409	1 29/32"	Ribbed (Sparked)	6 - 10G	500
1390	2"	Ribbed (Sparked)	14 - 20G	500
1418	2"	Ribbed (Sparked)	10 - 14G	500
1398	2 1/4"	Ribbed (Sparked)	10 - 14G	500
2346	2 3/8"	Ribbed (Sparked)	10 - 14G	400
1404	2 1/2"	Ribbed (Sparked)	14 - 18G	400
1401	2 1/2"	Ribbed (Sparked)	8 - 12G	400
Plain Inserts				
1645	3/4"	Plain Thickhead	16G	5,000
1641	7/8"	Plain Thickhead	16G	4,000
1854	7/8"	Plain	18G	5,000
1451	2"	Plain	10G	500

Options:

WHITE

BLACK

SILVER

GREY

Others available - POA

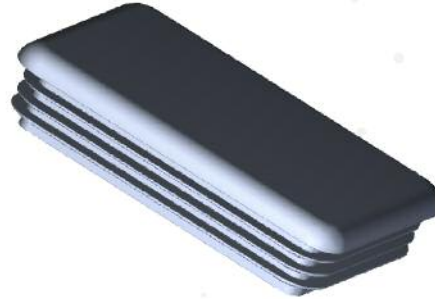
Available finishes:

FINISH	Polished (Gloss)	Fine (Matt)	Sparked (Rough)
VDI No.	33	42	46





Metric Rectangular Inserts



Rectangular inserts may be fitted into rectangular tubes to give a neat, attractive finish to tube ends. They are ideal for covering sharp tube edges and can be fitted easily and securely into a variety of gauges.

Black Colour Part No.	Size	Item Description	Gauge Range	Standard Quantity
Ribbed Insert				
1035	40 x 20 mm	Ribbed (Sparked)	1.0 - 2.5 mm	2,000
126147	40 x 25 mm	Ribbed (Sparked)	1.0 - 2.0 mm	1,500
1613	50 x 30 mm	Ribbed (Sparked)	1.5 - 3.0 mm	1,000
2020	50 x 34 mm	Ribbed (Sparked)	1.0 - 2.0 mm	500
1990	60 x 20 mm	Ribbed (Sparked)	1.2 - 1.6 mm	1,000
1624	60 x 30mm	Ribbed (Sparked)	1.5 - 3.0 mm	500
1632	60 x 40 mm	Ribbed (Sparked)	2.0 - 3.5 mm	500
2360	75 x 25 mm	Ribbed (Sparked)	1.2 - 1.6 mm	500
137664	75 x 25 mm	Ribbed (Sparked)	2.0 - 3.25 mm	500
2285	80 x 40 mm	Ribbed (Sparked)	2.5 - 4.0 mm	250
2003	100 x 40 mm	Ribbed (Sparked)	2.0 - 4.0 mm	200
1034	100 x 50 mm	Ribbed (Sparked)	2.0 - 4.0 mm	200
Plain Inserts				
1687	20 x 10 mm	Plain (Sparked)	1.5 mm	5,000
1888	25 x 20 mm	Plain (Sparked)	1.5 mm	3,000
1646	30 x 15 mm	Plain (Sparked)	1.5 mm	4,000
1975	30 x 15 mm	Plain (Sparked)	1.2 mm	4,000
2190	32 x 16 mm	Plain (Sparked)	1.5 mm	5,000
1360	30 x 20 mm	Plain (Sparked)	2.0 mm	3,000
1327	31 x 19 mm	Plain (Sparked)	1.5 mm	3,000
126926	34 x 20 mm	Plain (Sparked)	2.0 mm	2,000
126746	45 x 20 mm	Plain (Sparked)	1.2 mm	1,500
126004	50 x 40 mm	Plain (Sparked)	2.5 mm	1,000
1750	60 x 20 mm	Plain (Sparked)	1.5 mm	1,000
2057	75 x 25 mm	Plain (Sparked)	1.5 mm	500
1356	80 x 30 mm	Plain (Sparked)	2.0 mm	500

Options:

 WHITE

 BLACK

 SILVER

 GREY

Others available - POA

Available finishes:

FINISH	Polished (Gloss)	Fine (Matt)	Sparked (Rough)
VDI No.	33	42	46

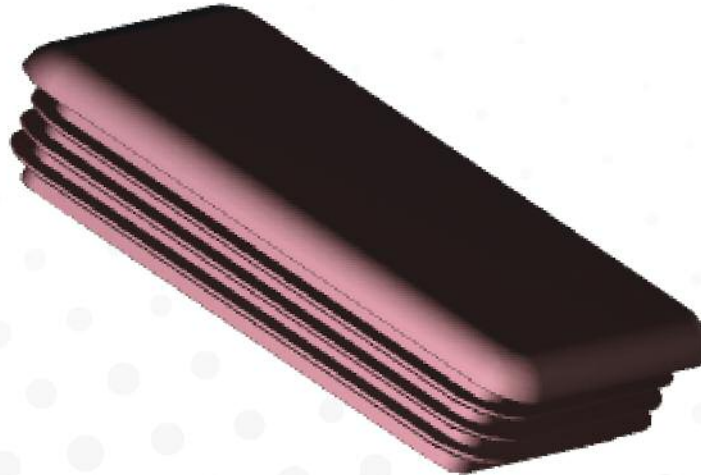
Made in UK





Imperial Rectangular Inserts

Rectangular inserts may be fitted into rectangular tubes to give a neat, attractive finish to tube ends. They are ideal for covering sharp tube edges and can be fitted easily and securely into a variety of gauges.



Black Colour Part No.	Size	Item Description	Gauge Range	Standard Quantity
Ribbed Insert				
1007	1 x 1/2"	Ribbed (Sparked)	16 - 18G	5,000
1331	1 3/8" x 5/8"	Ribbed (Sparked)	14 - 20G	3,000
134133	1 1/2" x 1/2"	Ribbed (Sparked)	14 - 20G	2,000
133473	1 1/2" x 3/4"	Ribbed (Sparked)	14 - 20G	2,000
133500	1 1/2" x 1"	Ribbed (Sparked)	14 - 20G	2,000
1003	2" x 1"	Ribbed (Sparked)	14 - 20G	1,500
1004	2" x 1"	Ribbed (Polished)	14 - 20G	1,500
1119	2" x 1"	Ribbed (Sparked)	10 - 14G	1,500
2046	2 1/2" x 1"	Ribbed (Sparked)	14 - 20G	1,000
1651	2 1/2" x 1 1/2"	Ribbed (Sparked)	14 - 20G	500
137676	3" x 1"	Ribbed (Sparked)	10 - 14G	500
134108	3" x 2"	Ribbed (Sparked)	10 - 14G	400
134882	5" x 2"	Ribbed (Sparked)	7 - 12G	200
Plain Inserts				
1170	1 1/2" x 3/4"	Plain	16-18G	2,000

Options: WHITE BLACK SILVER GREY

Others available - POA

Available finishes:

FINISH	Polished (Gloss)	Fine (Matt)	Sparked (Rough)
VDI No.	33	42	46



Domed and Shaped Inserts

These ergonomically designed inserts may be fitted into tubes to give a neat, attractive finish to tube ends. They are ideal for covering sharp tube edges and can be fitted easily and securely into a variety of gauges.



Black Colour Part No.	Size	Item Description	Gauge Range	Standard Quantity
Domed				
1485	5/8"	Round Domed Insert (Sparked)	14 - 20G	5,000
135622	3/4"	Round Domed Insert (Sparked)	14 - 20G	5,000
1595	1 1/2"	Round Domed Insert (Sparked)	14 - 20G	1,500
1403	2"	Round Domed Insert (Sparked)	10 - 14G	500
1400	2"	Round Domed Insert (Sparked)	14 - 20G	500
1173	1 1/2" x 3/4"	Rect. Domed Insert (Sparked)	14 - 20G	2,000
1137	2" x 1"	Rect. Domed Insert (Sparked)	10 - 14G	1,500
1132	2" x 1"	Rect. Domed Insert (Sparked)	14 - 20G	1,000
1845	2" x 1"	Rect. Domed Insert (Sparked)	16 - 18G	1,000
2381	50" x 30"	Rect. Domed Insert (Sparked)	0.5 - 1.5G	250
1635	60 x 30 mm	Rect. Domed Insert (Sparked)	1.0 - 2.0 mm	750
1463	75 x 25 mm	Rect. Domed Insert (Sparked)	1.5 mm	500
2004	100 x 40 mm	Rect. Domed Insert (Sparked)	2.0 - 4.0 mm	200
126125	1 1/4" x 5/8"	Oval Domed Insert (Sparked)	16G	2,000
126077	60 x 30 mm	Oval Domed Insert (Sparked)	1.2 mm	1,000
126076	60 x 30 mm	Oval Domed Insert (Sparked)	1.5 mm	1,000
126074	60 x 30 mm	Oval Domed Insert (Sparked)	2.0 mm	1,000
1712	60 x 25 mm	Tunnel Domed Insert (Sparked)	1.0 - 2.0 mm	1,000

Options:

 WHITE

 BLACK

 SILVER

 GREY

Others available - POA

Available finishes:

FINISH	Polished (Gloss)	Fine (Matt)	Sparked (Rough)
VDI No.	33	42	46

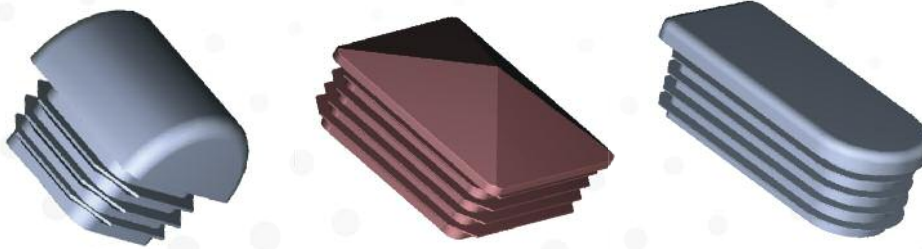
Made in UK





Domed and Shaped Inserts

These ergonomically designed inserts may be fitted into tubes to give a neat, attractive finish to tube ends. They are ideal for covering sharp tube edges and can be fitted easily and securely into a variety of gauges.



Black Colour Part No.	Size	Item Description	Gauge Range	Standard Quantity
Half Moon				
1443	3/4"	Sqr. Half Moon Insert (Sparked)	14 - 20G	3,000
1444	7/8"	Sqr. Half Moon Insert (Sparked)	14 - 20G	3,000
1094	1"	Sqr. Half Moon Insert (Sparked)	10 - 14G	2,500
1095	1"	Sqr. Half Moon Insert (Sparked)	14 - 20G	2,500
Pyramid				
1577	40 mm	Sqr. Pyramid Insert (Sparked)	2.0 - 3.0 mm	1,000
1563	2"	Sqr. Pyramid Insert (Sparked)	10 - 14G	500
1567	2"	Sqr. Pyramid Insert (Sparked)	14 - 20G	500
Wedge				
1839	2" x 1"	Rect. Wedge Insert (Sparked)	16 - 18G	1,000
Tunnel				
1708	60 x 25 mm	Flat Tunnel Insert (Sparked)	1.0 - 2.0 mm	1,000

Options: WHITE BLACK SILVER GREY

Others available - POA

Available finishes:

FINISH	Polished (Gloss)	Fine (Matt)	Sparked (Rough)
VDI No.	33	42	46





Flat Sided Ovals

This range of oval and flat sided inserts may be fitted into tubes to give a neat, attractive finish to tube ends. They are ideal for covering sharp tube edges and can be fitted easily and securely into a variety of gauges.



Black Colour Part No.	Size	Item Description	Gauge Range	Standard Quantity
Ribbed Insert				
2204	1 1/4" x 5/8"	Ribbed	16 - 18G	5,000
2277	50 x 25 mm	Ribbed	1.0 - 2.0 mm	1,500
1379	1 1/4" x 5/8"	Plain	16G	5,000
2242	48 x 20 mm	Plain	1.5 mm	2,000
133665	60 x 30 mm	Plain	1.2 mm	1,000
133664	60 x 30 mm	Plain	1.5 mm	1,000
133663	60 x 30 mm	Plain	2.0 mm	1,000
126663	70 x 40 mm	Plain Elliptical	2.0 mm	500
133499	32 x 16 mm	Garment Rail	2.0 mm	3,000

Options:

 WHITE

 BLACK

 SILVER

 GREY

Others available - POA

Available finishes:

FINISH	Polished (Gloss)	Fine (Matt)	Sparked (Rough)
VDI No.	33	42	46

Made in UK





Threaded Inserts

Ideal for adjustable feet, tilt glides and castors, threaded inserts are available to fit square, circular, and rectangular ports. Plastic, Steel or Aluminium threaded inserts are suitable for heavy duty applications where a threaded end is required.



Black Colour Part No.	Size	Item Description	Gauge Range	Standard Quantity
133335	3/4" x 3/4"	M8 Threaded Round	18G	5,000
133336	1" x 1"	M8 Threaded Round	20G	2,500
133330	3/4" x 3/4"	M8 Threaded Square	18G	5,000
133597	7/8" x 7/8"	M8 Threaded Square	18G	2,500
133331	1" x 1"	M8 Threaded Square	16 - 17G	2,500
133332	1" x 1"	M8 Threaded Square	18G	2,500
129277	1 1/4" x 1 1/4"	M8 Threaded Square	18G	1,000
133643	30 mm	M8 Threaded Square	1.5 mm	1,500
133333	40 x 20mm	M8 Threaded Oval (Grey)	1.5 mm	2,000
2009	38 x 19 mm	M8 Threaded Rectangular	17G	1,000
2005	38 x 19 mm	M8 Threaded Rectangular	18G	1,000
133995	40 x 20 mm	M8 Threaded Rectangular	1.5 mm	2,000
133524	60 x 30 mm	M10 Threaded Rectangular	2.0 mm	500
133523	60 x 30 mm	M10 Threaded Rectangular	2.5 mm	500
133670	3/4"	1/4" UNC Threaded Square	18G	5,000
133671	7/8"	1/4" UNC Threaded Square	18G	2,500
133672	1"	1/4" UNC Threaded Square	16/17G	2,500
133673	1"	1/4" UNC Threaded Square	18G	2,500
133676	3/4"	5/16" UNC Threaded Square	18G	5,000
133677	7/8"	5/16" UNC Threaded Square	18G	2,500
133678	1"	5/16" UNC Threaded Square	16/17G	2,500
133679	1"	5/16" UNC Threaded Square	18G	2,500
133674	3/4"	1/4" UNC Threaded Round	18G	5,000
133675	1"	1/4" UNC Threaded Round	20G	2,500
133680	3/4"	5/16" UNC Threaded Round	18G	5,000
133681	1"	5/16" UNC Threaded Round	20G	2,500

Options: WHITE BLACK SILVER GREY

Others available - POA

Available finishes:

FINISH	Polished (Gloss)	Fine (Matt)	Sparked (Rough)
VDI No.	33	42	46





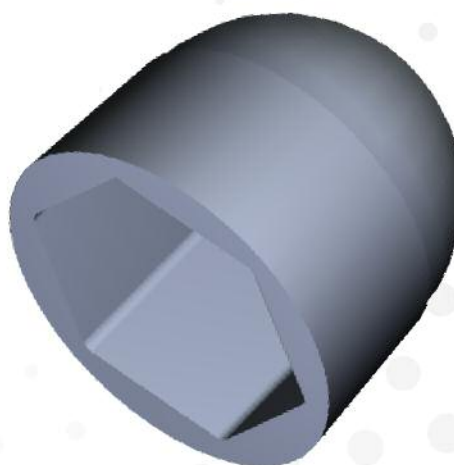
Side Entry Inserts with Steel Threads

Our range of side entry inserts may be fitted into tubes to give a neat, attractive finish to tube ends. They are ideal for covering sharp tube edges and can be fitted easily and securely into a variety of gauges.

Black Colour Part No.	Size	Item Description	Gauge Range	Standard Quantity
2194	1" x 1"	Square - M8	18G	500
1515	1/2" x 3/4"	Rectangular - M8	16G	1,000
2216	2" x 1"	Rectangular - M8	16 - 18G	1,000
126682	1 1/8"	Round - M8	16 - 18G	1,000

Bolt and Nut Covers

These are offered in a wide range of styles and colours. Our range conceals and protect caps for bolts and nuts with a neat and tidy finish, reducing the potential for weathering and tampering, as well as giving a neat finish. Applications include playground equipment and furniture.



Black Colour Part No.	Size	Item Description	Bolt Size	Standard Quantity
1784	6 mm	Domed Nut Cover	M6	10,000
1663	8 mm	Domed Nut Cover	M8	10,000
1900	10 mm	Domed Nut Cover	M10	5,000
2291	12 mm	Domed Nut Cover	M12	5,000

Options:

WHITE

BLACK

SILVER

GREY

Others available - POA

Available finishes:

FINISH	Polished (Gloss)	Fine (Matt)	Sparked (Rough)
VDI No.	33	42	46

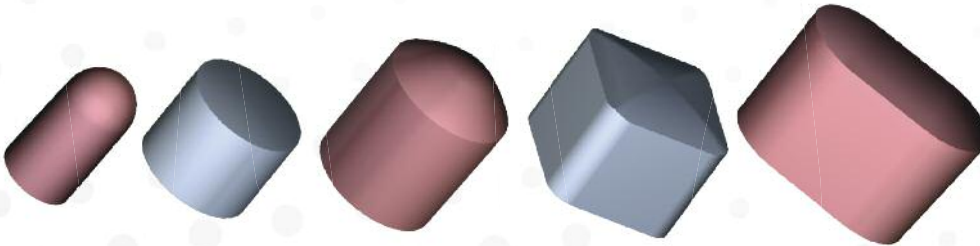
Made in UK





Ferrules and Tips

Ferrules are perfect protective caps for protruding steel components or bars. Easy to fit, our flexible ferrules can be used to give a neat finish to tubular products and cover sharp edges. End tips also add protection or a neat finish to a wide range of applications improving product presentation and protection.



Black Colour Part No.	Size	Item Description	Standard Quantity
2013	5/16" (8.0 mm)	PVC Taper Tip Ferrule	10,000
1895	3/32" (2.4 mm)	PVC End Tip (Soft)	10,000
1892	3/16" (4.8 mm)	PVC End Tip (Soft)	10,000
1893	3/16" (4.8 mm)	PVC End Tip (Hard)	10,000
1880	1/4" (6.35 mm)	PVC End Tip	10,000
1868	5/16" (8.0 mm)	PVC End Tip (Hard)	10,000
1872	5/16" (8.0 mm)	PVC End Tip (Soft)	10,000
2163	1/2"	Round Ferrule	10,000
1680	5/8"	Round Ferrule	5,000
1950	18 mm	Round Ferrule	2,500
134510	3/4"	Round Ferrule Flat Type	2,500
1321	3/4"	Round Ferrule Domed	2,500
133384	7/8"	Round Ferrule	2,500
133434	1"	Round Ferrule	1,500
1674	1"	Round Ferrule (Soft)	1,500
2016	1 1/8"	Round Ferrule	1,200
1684	1 1/4"	Round Ferrule	1,000
1534	1 1/2"	Round Ferrule	500
1851	1 3/4"	Round Ferrule	500
2269	3/4"	Square Ferrule	2,500
127031	1 1/4" x 5/8"	Oval Ferrule	1,500

Options: WHITE BLACK SILVER GREY

Others available - POA

Available finishes:

FINISH	Polished (Gloss)	Fine (Matt)	Sparked (Rough)
VDI No.	33	42	46



Desk Components Wire Management

Desk Cable Tidies keep computer, telephone and other cables tidy. Desk Cable Tidies are in oval, round or rectangular even with chamfered corner shapes all in a variety of colours.

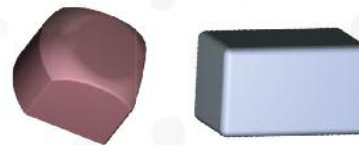


Black Colour Part No.	Size	Item Description	Standard Quantity
1223	65 mm	Round Desk Tidy	336
1214	80 mm	Round Desk Tidy	240
135571	100 x 50 mm	Oval Desk Tidy	270
2309	100 x 50 mm	Large Lip Oval Desk Tidy	200
1765	100 x 50 mm	Rectangular Desk Tidy - 2 way	250
126521	100 x 50 mm	Rectangular Desk Tidy - 4 way	250

Paper Management

Black Colour Part No.	Size	Item Description	Standard Quantity
2086	440 x 30 mm	Rectangular Paper Slot Grommet	100
1457	330 x 70 mm	Open Pen Tray	100
1459	330 x 70 mm	Segmented Pen Tray	100

Stand Off Feet



Our stand-off feet are ideal for protecting floor surfaces and adding extra stability.

Black Colour Part No.	Size	Item Description	Standard Quantity
2270	3/4" x 3/4"	Stand Off Foot	2,500
1367	1" x 1"	Stand Off Foot	500
2131	1 1/2" x 3/4"	Stand Off Foot	500
2231	40 x 20 mm	Stand Off Foot	500
1952	2" x 1"	Stand Off Foot	500

Options:

 WHITE

 BLACK

 SILVER

 GREY

Others available - POA

Available finishes:

FINISH	Polished (Gloss)	Fine (Matt)	Sparked (Rough)
VDI No.	33	42	46

Made in UK





Angled Feet



Our range of adjustable and tilt feet is ideal for levelling products which rest on angled floors or surfaces relative to the angle of the tube end.

Black Colour Part No.	Size	Item Description	Gauge Range	Standard Quantity
134457	5/8"	Round Angled Foot Insert	16G	5,000
2219	3/4"	Round Angled Foot Insert	14G	5,000
2223	3/4"	Round Angled Foot Insert	16G	5,000
126041	1 1/8"	Round Angled Foot Insert	16G	1,000
1953	1 1/8"	Large Base Angled Foot Insert	16G	800
2279	25 mm	Round Angled Foot Insert	1.2 - 1.5 mm	1,500
1543	5/8"	Square Angled Foot Insert	14 - 20G	5,000
1309	30 mm	Square Angled Foot Insert	2 - 3 mm	2,000
126051	26 x 23 mm	Rect. Angled Foot Insert	1.6 mm	5,000
126171	1 1/2" x 3/4"	Rect. 45° Angled Foot Insert	1.2 mm	2,000
2049	2 1/2" x 1"	Rect. Angled Foot Insert	14 - 20G	1,000



Adjustable Tilt Feet



Our range of adjustable and tilt feet is ideal for leveling products which rest on uneven floors such as cabinets, enclosures or free-standing equipment.

Black Colour Part No.	Base Diameter	Item Description	Thread Size & Length	Standard Quantity
Ribbed Insert				
1963	25 mm	Ball Ended Tilt Foot	M8 x 25	1,000
137556	25 mm	Ball Ended Tilt Foot	M8 x 35	1,000
1968	25 mm	Ball Ended Tilt Foot	M10 x 16	1,000
1964	25 mm	Ball Ended Tilt Foot	M10 x 25	1,000
1965	25 mm	Ball Ended Tilt Foot	M10 x 37.5	1,000
2113	38 mm	Ball Ended Tilt Foot	M8 x 25	1,000
2115	38 mm	Ball Ended Tilt Foot	M10 x 25	1,000
2114	38 mm	Ball Ended Tilt Foot	M10 x 37.5	500
2248	50 mm	Ball Ended Tilt Foot	M8 x 25	500
2249	50 mm	Ball Ended Tilt Foot	M10 x 25	500
2247	50 mm	Ball Ended Tilt Foot	M10 x 37.5	500

Options:

WHITE

BLACK

SILVER

GREY

Others available - POA

Available finishes:

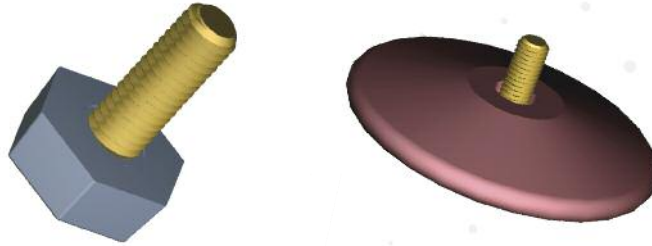
FINISH	Polished (Gloss)	Fine (Matt)	Sparked (Rough)
VDI No.	33	42	46





Height Adjustable Feet

Our range of adjustable and tilt feet is ideal for levelling products which rest on uneven floors such as cabinets, enclosures or free-standing equipment.



Black Colour Part No.	Base Diameter	Item Description	Thread Size & Length	Standard Quantity
2213	20 mm Hex	Adjustable Foot	M6 x 16	1,000
2209	20 mm Hex	Adjustable Foot	M6 x 22	1,000
2212	20 mm Hex	Adjustable Foot	M6 x 25	1,000
2211	20 mm Hex	Adjustable Foot	M6 x 30	1,000
2214	20 mm Hex	Adjustable Foot	M8 x 16	1,000
2210	20 mm Hex	Adjustable Foot	M8 x 25	1,000
2156	25 mm Dia	Adjustable Foot	M8 x 25	1,000
2158	25 mm Dia	Adjustable Foot	M8 x 40	1,000
2160	25 mm Dia	Adjustable Foot	M8 x 45	1,000
133274	30 mm Dia	Adjustable Foot	M8 x 25	500
2258	30 mm Dia	Adjustable Foot	M8 x 30	500
2259	30 mm Dia	Adjustable Foot	M8 x 65	1,000
126790	30 mm Dia	Adjustable Foot	M10 x 25	1,000
126789	30 mm Dia	Adjustable Foot	M10 x 30	500
2138	38 mm Dia	Adjustable Foot	M8 x 16	1,000
2135	38 mm Dia	Adjustable Foot	M8 x 25	1,000
2136	38 mm Dia	Adjustable Foot	M8 x 40	1,000
2142	38 mm Dia	Adjustable Foot	M10 x 25	500
2140	38 mm Dia	Adjustable Foot	M10 x 40	500
2139	38 mm Dia	Adjustable Foot	M10 x 50	500
133002	52 mm Dia	Adjustable Foot	M8 x 25	500
2227	52 mm Dia	Adjustable Foot	M8 x 35	500
134210	80 mm Dia	Adjustable Foot	M8 x 15	200
136093	80 mm Dia	Adjustable Foot	M8 x 25	200
134685	80 mm Dia	Adjustable Foot	M8 x 35	200
134601	80 mm Dia	Adjustable Foot	M8 x 40	200

Options:

 WHITE

 BLACK

 SILVER

 GREY

Others available - POA

Available finishes:

FINISH	Polished (Gloss)	Fine (Matt)	Sparked (Rough)
VDI No.	33	42	46

Made in UK

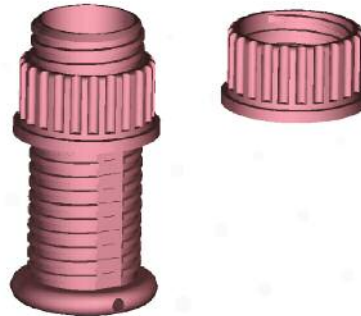




Adjustable Table Legs



Our range of adjustable and table legs is ideal for levelling products which rest on uneven floors such as cabinets, furniture, enclosures or free-standing equipment.



Black Colour Part No.	Size	Item Description	Gauge Range	Standard Quantity
2314	50 mm	Adjustable Foot	N/A	250
2312	50 mm	Adjustable Insert	2 mm	250
2391	50 mm	Adjustable Insert	1.5 mm	250
2363	60 mm	Adjustable Insert	2 mm	250
2313	2"	Adjustable Insert	16 g	250



Miscellaneous Feet

Black Colour Part No.	Size	Item Description	Standard Quantity
128883	15 mm	Glide insert x 10 mm Peg	10,000
1514	15 x 15 mm	Cabinet foot - 3mm hole	10,000
2302	25 x 9 mm	Cabinet foot - 5 mm hole	5,000
133571	45 mm	Glides Spigot	1,000
133577	45 mm	Glides Countersunk hole	1,000

Options:

WHITE

BLACK

SILVER

GREY

Others available - POA

Available finishes:

FINISH	Polished (Gloss)	Fine (Matt)	Sparked (Rough)
VDI No.	33	42	46





Tube Adjusters

Tube adjusters provide an effective method for fixing telescopic tubing. Our tube adjusters include tube locks, anti rattle rings and tube adjusters with thumb screw.



Black Colour Part No.	Size	Item Description	Standard Quantity
137608	1/2" - 5/8"	Twist Lock Tube Adjuster	1,000
137602	5/8" - 3/4"	Twist Lock Tube Adjuster	1,000
1728	1/2" - 5/8"	Thumb Screw Tube Adjuster	1,000
1730	1/2" - 3/4"	Thumb Screw Tube Adjuster	1,000
1722	5/8" - 3/4"	Thumb Screw Tube Adjuster	1,000
2472	5/8" - 20 mm	Thumb Screw Tube Adjuster	1,000
1726	5/8" Hole	Thumb Screw Tube Adjuster	1,000
1847	3/4" - 7/8"	Thumb Screw Tube Adjuster	1,000
134552	3/4" - 1"	Thumb Screw Tube Adjuster	1,000
1858	7/8" - 1'	Thumb Screw Tube Adjuster	1,000

Options:

 WHITE

 BLACK

 SILVER

 GREY

Others available - POA

Available finishes:

FINISH	Polished (Gloss)	Fine (Matt)	Sparked (Rough)
VDI No.	33	42	46

Made in UK





Male Handwheels

Our range covers a wide variety of applications. They provide an attractive finish to levers and handles. Our handwheels are available in a number of ergonomic shapes and in both male and female types.

Black Colour Part No.	Thread Size and Length	Handle Description	Handle Size	Standard Quantity
2089	M6 x 15	Triangular	40	1,000
2087	M6 x 20	Triangular	40	1,000
134640	M6 x 25	Triangular	40	1,000
2096	M6 x 30	Triangular	40	1,000
2098	M6 x 35	Triangular	40	1,000
1961	M8 x 20	Triangular	60	1,000
2093	M8 x 15	Triangular	40	1,000
2094	M8 x 20	Triangular	40	1,000
2095	M8 x 30	Triangular	40	1,000
1954	M6 x 15	Triangular	60	1,000
1955	M6 x 20	Triangular	60	1,000
1956	M6 x 35	Triangular	60	1,000
1959	M8 x 30	Triangular	60	500
133416	M8 x 25	Petal	40	1,000
2256	M10 x 30	Petal	40	1,000
2257	M10 x 40	Petal	40	1,000
2225	M8 x 40	Star	60	1,000
2224	M8 x 70	Star	60	500
2192	M8 x 30	Scalloped	60	1,000



Female Handwheels

Black Colour Part No.	Thread Size	Handle Description	Handle Size	Standard Quantity
129018	M8	Triangular	40	1,000
129001	M8	Triangular	60	1,000

Options: WHITE BLACK SILVER GREY

Others available - POA

Available finishes:

FINISH	Polished (Gloss)	Fine (Matt)	Sparked (Rough)
VDI No.	33	42	46





Stacking Chair Buffers

Engineered for furniture designers these buffers eliminate damage to products when stored especially during stacking.

Black Colour Part No.	Size	Item Description	Standard Quantity
1465	12 mm head	Stacking Peg x 6 mm peg	10,000
1655	19 mm head	Stacking Peg x 6 mm peg	10,000

Pin Clips



Black Colour Part No.	Pin Length	Item Description	Gauge Range	Standard Quantity
127488	7/8"	Pin Clips	18 mm	1,000
133453	7/8"	Pin Clips	29 mm	1,000
127485	7/8"	Pin Clips	25 mm	1,000

Rotary Line Fittings



Engineered for rotary line designers these fittings allow for the function of the design during operation on 3 and 4 way designs.

Black Colour Part No.	Type	Item Description	Hole Size	Standard Quantity
1856	4 Way Arm	Open nylon rotary L/W	33 mm	150
1855	4 Way Arm	Closed nylon rotary L/W White	33 mm	150
1976	3 Way Arm	Open nylon rotary STD	33 mm	150
1977	3 Way Arm	Closed nylon rotary STD	33 mm	150
1982	4 Way Arm	Open nylon rotary STD	33 mm	150
1983	4 Way Arm	Closed nylon rotary STD	33 mm	150
2074	3 Way Arm	Open prop. rotary STD	41.5 mm	150
2075	3 Way Arm	Closed prop. rotary STD	35.5 mm	100
2072	4 Way Arm	Open prop. rotary STD	41.5 mm	150
2073	4 Way Arm	Closed prop. rotary STD	35.5 mm	75
2425	Handgrip	Twistlock Style	35.5 mm	150

Options:

 WHITE

 BLACK

 SILVER

 GREY

Others available - POA

Available finishes:

FINISH	Polished (Gloss)	Fine (Matt)	Sparked (Rough)
VDI No.	33	42	46

Made in UK





Prop Tops



Black Colour Part No.	Size	Item Description	Gauge Range	Standard Quantity
1753	12 mm	Nylon Prop Top	1.2 mm	1,000
1751	18 mm	Nylon Prop Top White	1.2 mm	1,000
137031	1/2"	Nylon Prop Top	18 g	1,000
1720	5/8"	Nylon Prop Top	18 g	1,000
1812	3/4"	Nylon Prop Top White	18 g	1,000



Hinges, Connectors & Clips

Tube connectors are for connecting two or more sections of round or square tubing. Straight tube connectors are ideal for round and square tubing. Multi-way tube connectors may be used for connecting multiple tubes together at one point. Radius tube connectors are an ideal solution for making T-joints. In addition we have a small range of hinges and clips.

Black Colour Part No.	Size	Item Description	Standard Quantity
126783	1/4"	Indoor Aired Fig. 8 Clip	4,000
2069	1/4"	Indoor Aired Top Cap Blue	4,000
1813	5/8"	W Shaped Clip (Parallel)	5,000
134458	5/8"	Straight Tube Connector	1,000
126132	22 mm	6 Way Connector	1,500
2301	1 x 1"	Expanding Tube Connector	1,000

Options:

WHITE

BLACK

SILVER

GREY

Others available - POA

Available finishes:

FINISH	Polished (Gloss)	Fine (Matt)	Sparked (Rough)
VDI No.	33	42	46





Tent Components

Designed for tent pole products our tops and feet meet most applications.

Black Colour Part No.	Size	Item Description	Gauge Range	Standard Quantity
135619	5/8"	Tent Pole top	1 mm	3,000
135537	3/4"	Tent Pole top	1 mm	2,000
1978	7/8"	Tent Pole top	1 mm	2,000
136650	1"	Tent Pole top	1 mm	1,500
1864	5/8"	Ridge Pole end	1.2 mm	2,000
1862	3/4"	Ridge Pole end Natural	1.2 mm	1,500
1873	3/4"	Spiked Pole foot	1.2 mm	1,000
1874	7/8"	Spiked Pole foot	1.2 mm	1,000

Saddle (Dished) Washers



Our range of saddle washers are ideal for the assembly of round tubes and give a flat mating surface.

Black Colour Part No.	Size	Item Description	Gauge Range	Standard Quantity
2128	3/4"	Full saddle washer parallel	2 mm	5,000
2125	7/8"	Full saddle washer tapered Ash Grey	2 mm	5,000
2126	7/8"	Full saddle washer parallel Ash Grey	2 mm	5,000
2120	7/8"	Half saddle washer tapered Ash Grey	2 mm	5,000
2121	7/8"	Half saddle washer parallel Ash Grey	2 mm	3,000

Options:

WHITE

BLACK

SILVER

GREY

Others available - POA

Available finishes:

FINISH	Polished (Gloss)	Fine (Matt)	Sparked (Rough)
VDI No.	33	42	46

Made in UK





Edge & Corner Protectors



Black Colour Part No.	Size	Item Description	Standard Quantity
127266	30 - 50 mm	Expandable Corner Protector	250
2199	28 mm	Edge Protector	1,500



Anti-Rattle Rings

Our range of anti-rattle rings are designed for finishing telescopic tubes. The Anti-Rattle Rings are supplied in a range of colours.

Black Colour Part No.	Size	Item Description	Standard Quantity
2230	5/8" - 3/4"	Anti-Rattle Ring (Soft)	2,500
2228	5/8" - 3/4"	Anti-Rattle Ring (Hard)	2,500
1519	3/4" - 7/8"	Anti-Rattle Ring (Soft)	2,500
1523	7/8" - 1"	Anti-Rattle Ring (Soft)	2,500



Saddle Feet

Ideal for protecting floor surfaces, our saddle feet are designed to fit around metal tubes to act as a boot.

Black Colour Part No.	Size	Item Description	Standard Quantity
2426	3/4"	Saddle Foot with Peg	2,000
1715	7/8" - 1"	Saddle Foot with Peg	1,500
1718	7/8" - 1"	Saddle Foot without Peg	1,500
1686	1 1/4"	Saddle Foot with Peg	800

Options:

WHITE

BLACK

SILVER

GREY

Others available - POA

Available finishes:

FINISH	Polished (Gloss)	Fine (Matt)	Sparked (Rough)
VDI No.	33	42	46





Crutch Armbands

Designed for the medical devices market these arm bands offer support and comfort to patients using crutches

Black Colour Part No.	Item Description	Standard Quantity
1524	Crutch Armbands Ash Grey	80

Scaffold Protectors

Our Scaffold product range includes a pole end plug and base plate, providing support for standard metal bases and closing off pole ends especially at low level.

Black Colour Part No.	Size	Item Description	Standard Quantity
1409	1 29/32"	Scaffold End Plug (Ribbed Insert)	500
2246	6 1/2" x 6 1/2"	Scaffold Base Plate	500





Screw Hole Covers

Glazpart offer a full range of screw hole covers in an increasing range of colour options.

The range of screw hole covers includes;

Push fit head covers, where the cover is installed into the head of the fixing.

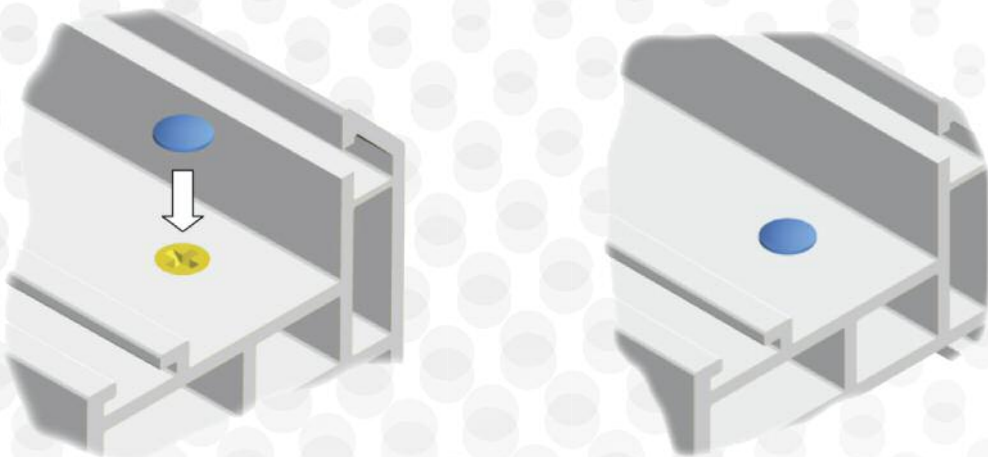
Cover barrels, where the cover is installed into the installation hole in the frame.

Washer cover caps, where the fixing is placed through the recessed washer and once the fixing is installed the attached cover is placed over the head of the fixing and clipped in place.

Colour Range

Glazpart screw hole covers now come in a range of moulded colours to meet referenced RAL, BS or foil reference numbers. This means a significant reduction in the need for the paint spraying of screw hole covers to match profile colours.

Where a though moulded colour is not available from stock our paint spraying service can colour match and supply finished, sprayed screw hole cover within your quoted lead time.



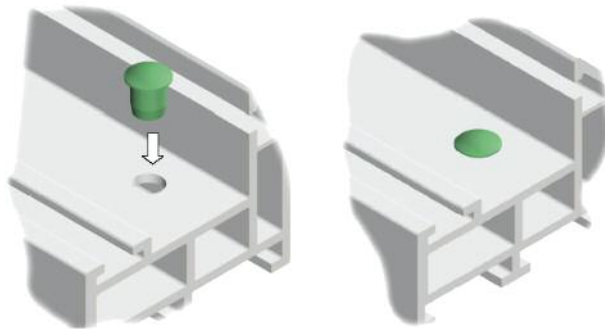
Part No.	Ø	Ø2	T	D	MATL	Colour
800131	13	12.2	9	4.3	PP	
800132	13	12.2	9	4.3	PP	
800133	13	12.2	9	4.3	PP	
800161	15.5	15	9	4.3	PP	
800162	15.5	15	9	4.3	PP	
800163	15.5	15	9	4.3	PP	
800191	18.6	18.2	9.4	4.3	PP	
800192	18.6	18.2	9.4	4.3	PP	
800193	18.6	18.2	9.4	4.3	PP	

Other colours are available upon request

For details of specific profile components please contact customer services.



Screw Hole Cover Barrells



Part No.	Ø	Ø2	T	D	MATL	Colour
800081	8.3	11				
800082	8.3	11				Black
800083	8.3	11				White
800101	10	11				
800102	10	11				Black
800103	10	11				White
800134	13.2				PP	
800135	13.2				PP	Black
800136	13.2				PP	White
800164	16.2				PA6	
800165	16.2				PA6	Black

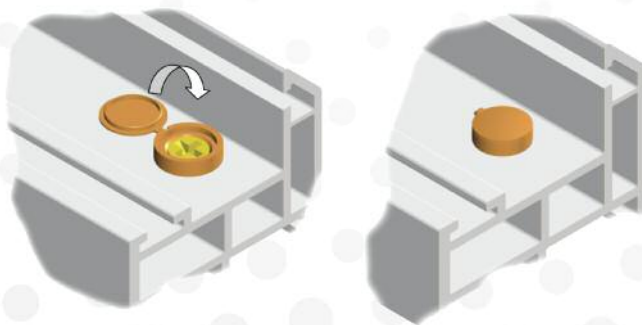
Other colours are available upon request

For details of specific profile components please contact customer services.





Screw Washer Cover Caps

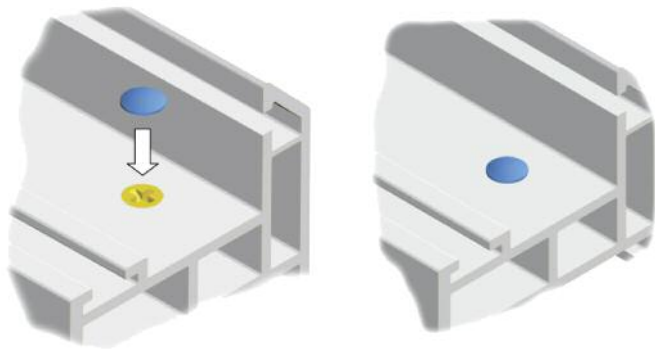


Part No.	Ø	Ø2	T	D	MATL	Colour
810101	13.5	0.6	3.5		PP	
810102	13.5	0.6	3.5		PP	Dark Brown
810103	13.5	0.6	3.5		PP	Black
810121	16.6	0.6	4.3		PA6	
810122	16.6	0.6	4.3		PA6	Dark Brown
810123	16.6	0.6	4.3		PA6	Black

For details of specific profile components please contact customer services.



Screw Cover Caps



Part No.	Ø	Ø2	T	D	MATL	Colour
820081	8.7	2	2.8	1.4	PP	
820082	8.7	2	2.8	1.4	PP	
820083	8.7	2	2.8	1.4	PP	
820101	11.2	2.4	4	1	PA6	
820102	11.2	2.4	4	1	PA6	
820103	11.2	2.4	4	1	PA6	
800125	13.9	3.8	3.5	1	PA6	
800126	13.9	3.8	3.5	1	PA6	

For details of specific profile components please contact customer services.



Disclaimer

The information contained in this catalogue is a guide to assist customers with product selection. Glazpart Ltd makes no representation or warranty as to the completeness or accuracy of the information contained herein other than it is believed to be correct at the time of publication. The products and specifications set in this catalogue are subject to change without notice and Glazpart Ltd disclaims any and all liability for such changes.

The information contained herein is provided without warranties of any kind, either express or implied, and Glazpart Ltd disclaims any and all liability for typographical, printing, or production errors or changes affecting the products and/or the specifications contained herein. All drawings enclosed are intended for illustration only and all information is believed to be correct at the time of publication.

It is the responsibility of the customer to thoroughly analyze all aspects of the customers' proposed application for the products. Due to the diversity of possible applications of Glazpart Ltd's products, the customer is solely responsible for making the final selection of the product(s) to be used and to assure that all performance, safety and warning requirements of the application are satisfied.

All sales of products shall be subject to Glazpart Ltd's General Terms and Conditions of Sale, a copy of which can be provided by Glazpart Ltd upon request.

For more information on any of
our products please contact us:

T 01295 264 533

F 01295 266 699

E sales@glazpart.co.uk

www.glazpart.com

