



CERTIFICATE OF APPROVAL
No CF 811A

This is to certify that, in accordance with
TS00 General Requirements for Certification of Fire Protection Products
The undermentioned products of

VETROTECH SAINT-GOBAIN INTERNATIONAL

Bernstrasse 43, CH-3175 Flamatt, Switzerland
Tel: +41 313368181 Fax: +41 313368119
Website: www.vetrotech.com

Have been assessed against the requirements of the Technical Schedule(s)
denoted below and are approved for use subject to the conditions
appended hereto:

CERTIFIED PRODUCTS

Contraflam
Fire Resisting Glass

TECHNICAL SCHEDULE

TS 25 Fire Resistant Glass,
Glazing Systems and Materials

Signed and sealed for and on behalf of CERTIFIRE

A handwritten signature in black ink, appearing to be "Sir Ken Knight".

Sir Ken Knight
Chairman - Management Council

Issued: 22 August 2011
Valid to: 21 August 2016

Page 1 of 57



Seal is in place Only valid when authentic CERTIFIRE



CERTIFICATE No CF 811A
VETROTECH SAINT-GOBAIN INTERNATIONAL

CONTRAFLAM FIRE RESISTING GLASS

This Certificate of Approval relates to the fire resistance of Contraflam glass when used in the following applications, as defined in BS 476: Part 22: 1987 subject to the undermentioned conditions.

Glass	Application	Integrity - (mins)	Insulation - (mins)	Page No.
Contraflam Door Lite	Timber Screens	30	0	5
Contraflam Door Lite Climaplus	Steel Screen	120	15	6
Contraflam Door Lite	Steel Screen	120	15	7
Contraflam Lite 30 Climaplus	Timber Screens	30	0	8
	Steel Screen	30	0	9
	Timber Screens	60	0	10
	Steel Screen	60	0	11
	Steel Screen	90	0	12
Contraflam Lite 30	Timber Screens	60	15	13
	Steel Screens	60	15	14
	Aluminium Screens	30	0	15
	Timber Screens	30	0	16
	Steel Screens	30	0	17
Contraflam Lite 60	Timber Screens	60	15	18
	Steel Screens	60	15	19
Contraflam Lite 60 Climaplus	Timber Screens	90	15	20
	Steel Screens	90	15	21
	Steel Screens	60	15	22
	Timber Screens	60	15	23
Contraflam 30 Climatop	Steel Screens	30	30	24
	Timber Screens	30	30	25
Contraflam 30	Steel Screens	90	30	26
	Timber Screens	90	30	27
	Timber Screens	30	30	28
	Steel Screens	30	30	29
	Timber Screens	60	30	30
	Steel Screens	60	30	31
	Aluminium Screens	30	30	32



CERTIFICATE No CF 811A
VETROTECH SAINT-GOBAIN INTERNATIONAL

CONTRAFLAM FIRE RESISTING GLASS

Glass	Application	Integrity - (mins)	Insulation - (mins)	Page No.
Contraflam 30	Steel Screens	30	30	33
	Timber Screens	30	30	34
Contraflam 30-2	Steel Screens	120	30	35
Contraflam 30 Climaplus	Timber Screens	30	30	36
	Steel Screens	30	30	37
Contraflam 30 Contour	Steel Screens	120	30	38
	Timber Screens	30	30	39
Contraflam 60	Aluminium Screens	60	60	40
	Steel Screens	60	60	41
	Timber Screens	60	60	42
Contraflam 60 Climaplus	Steel Screens	60	60	43
	Timber Screens	60	60	44
	Steel Screens	120	60	45
Contraflam 60	Steel Screens	90	60	46
Contraflam 60 Climaplus	Steel Screens	90	60	47
Contraflam 60	Timber Screens	60	60	48
	Horizontal Steel Walkable Floor	60	60	49
Contraflam 60-3	Steel Screens	120	60	50
Contraflam 90	Steel Screens	90	90	51
Contraflam 90 Climaplus	Steel Screens	90	90	52
Contraflam 90-4	Steel Screens	90	90	53
Contraflam 120	Steel Screens	120	120	54
Contraflam 120 Climaplus	Steel Screens	120	120	55
Contraflam 120	Steel Screens	120	120	56
Contraflam 120-6	Steel Screens	120	120	57

This product is approved on the basis of:

- i) Initial type testing.
- ii) A design appraisal against TS25.
- iii) Certification of quality management system to ISO 9001: 2008.
- iv) Inspection and surveillance of factory production control.
- v) Audit testing.

This Certificate of Approval must be read in conjunction with CERTIFIRE Technical Schedule TS25, Fire Resistant Glass, Glazing Systems and materials.



CERTIFICATE No CF 811A
VETROTECH SAINT-GOBAIN INTERNATIONAL

CONTRAFLAM FIRE RESISTING GLASS

General Requirements

Where the glass is installed in a timber or steel framed screen, the orientation of the screen shall be no more than $\pm 10^\circ$ from the vertical.

There is no restriction to the direction of exposure for the glass i.e. the glass is symmetrical. Orientation may, however, be restricted by the requirements of a non-symmetrical framing system or certain double glazed unit specifications.

Contraflam Climaplus units may incorporate internal blind systems where required.

The edge cover to each pane of Contraflam Glass shall be minimum 15 mm as detailed for each specific application on the following pages.

The Contraflam glass family is approved in a nominal thickness from 11 to 74 mm (depending on application).

The following glass types may incorporate a minimum 9 mm SGG STADIP 44.2 laminated glass layer in substitution for the 6 mm SGG SECURIT glass layer, used on one face of the composition of the Contraflam glass:

Contraflam Lite 30	Contraflam Lite 60	Contraflam 30
Contraflam Door Lite	Contraflam 30-2	Contraflam 60
Contraflam 60-3	Contraflam 90	Contraflam 90-4
Contraflam 120	Contraflam 120-6	

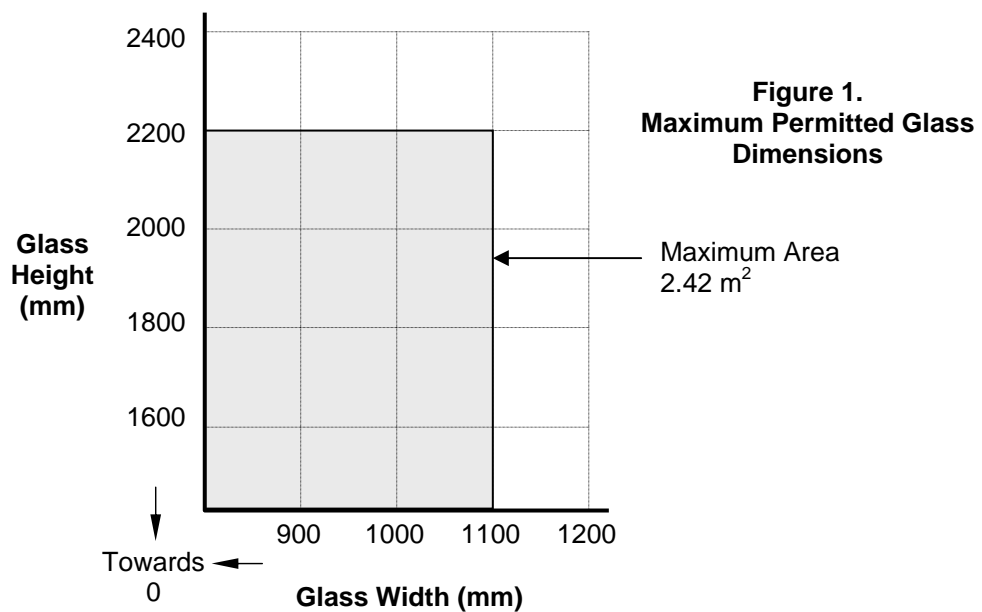
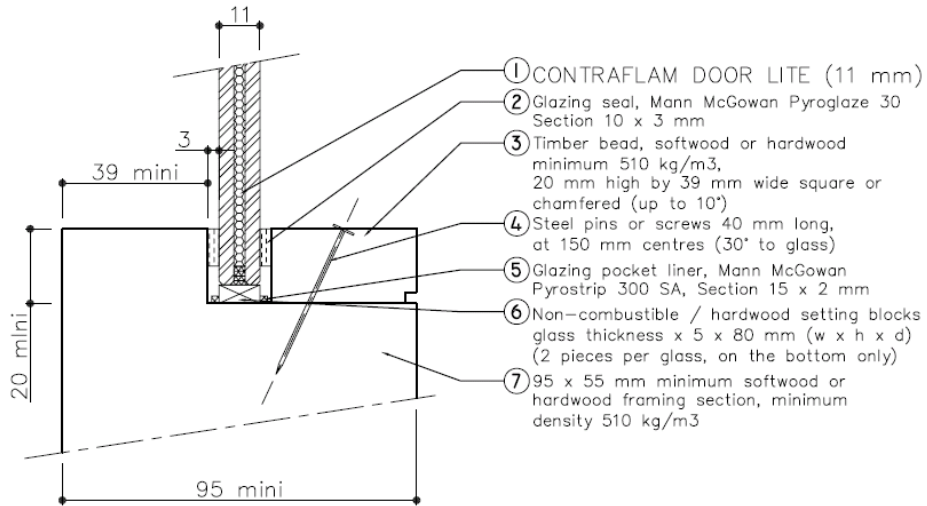
CERTIFICATE No CF 811A
VETROTECH SAINT-GOBAIN INTERNATIONAL

CONTRAFLAM FIRE RESISTING GLASS

Contraflam Door Lite Glass in timber framed screens for periods of 30 minutes integrity

The glass shall be glazed utilising the following basic specification:

The screens shall be no greater than 4000 mm high unless suitable tie backs and/or fire protected structural supports are provided.

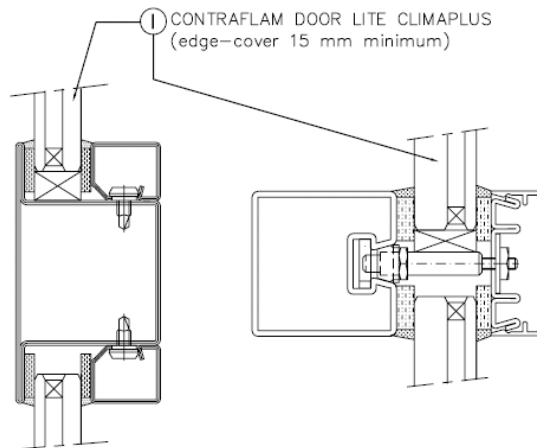


CERTIFICATE No CF 811A
VETROTECH SAINT-GOBAIN INTERNATIONAL

CONTRAFLAM FIRE RESISTING GLASS

Contraflam Door Lite Climaplus Glass in steel screens for periods of 120 minutes integrity and 15 minutes insulation

The glass shall be installed into a previously tested or CERTIFIRE approved framing system (which is covered appropriately by test or assessment evidence) using pressure plate glazing, screw-fixed or clip-on retaining beads, see examples below. The glass shall be glazed into the screen as described in the table below and set on non-combustible setting blocks to determine the correct edge cover.



The screens shall be no greater than 4000 mm high unless suitable tie backs and/or fire protected structural supports are provided.

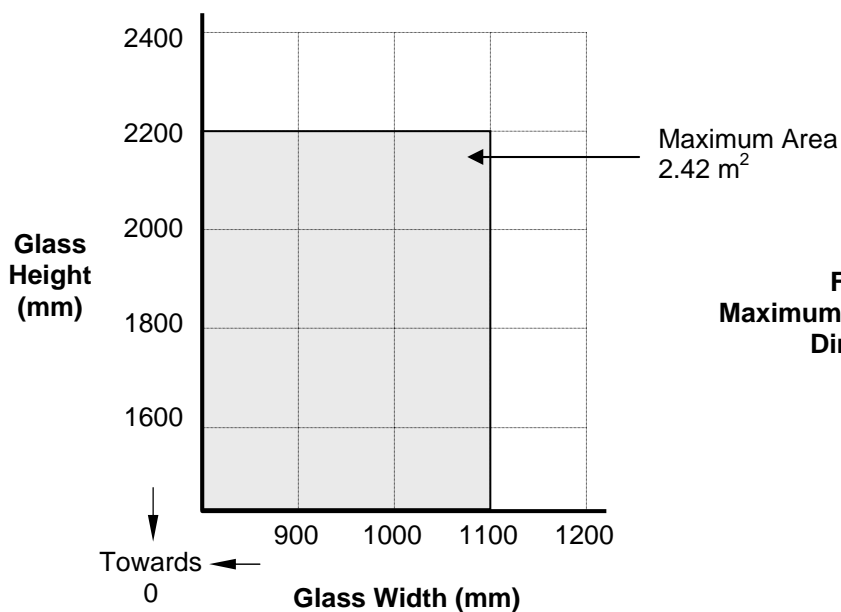


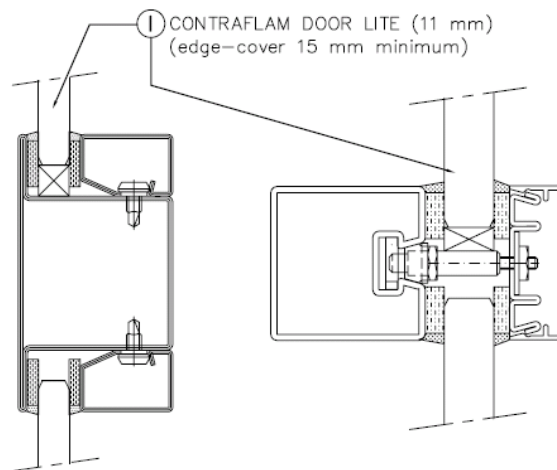
Figure 2.
Maximum Permitted Glass Dimensions

CERTIFICATE No CF 811A
VETROTECH SAINT-GOBAIN INTERNATIONAL

CONTRAFLAM FIRE RESISTING GLASS

Contraflam Door Lite Glass in steel screens for periods of 120 minutes integrity and 15 minutes insulation

The glass shall be installed into a previously tested or CERTIFIRE approved framing system (which is covered appropriately by test or assessment evidence) using pressure plate glazing, screw-fixed or clip-on retaining beads, see examples below. The glass shall be glazed into the screen as described in the table below and set on non-combustible setting blocks to determine the correct edge cover.



The screens shall be no greater than 4000 mm high unless suitable tie backs and/or fire protected structural supports are provided.

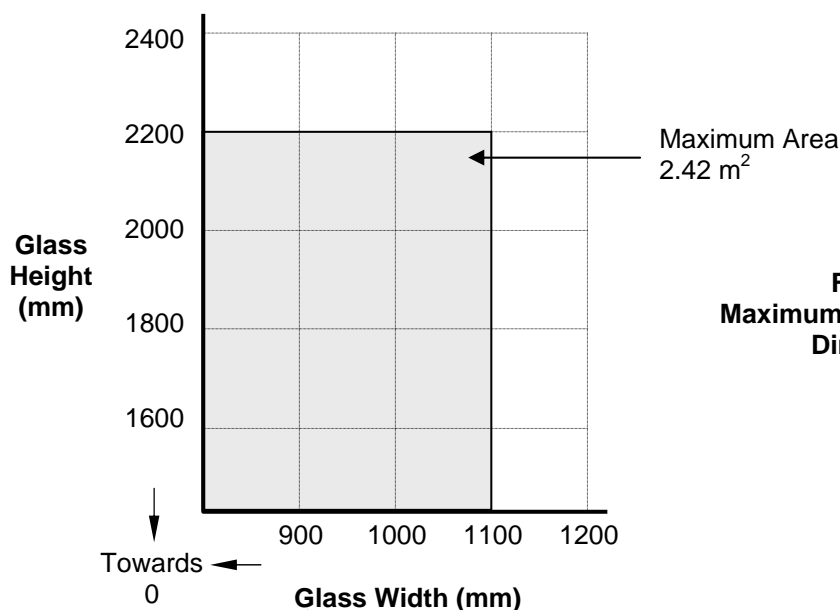


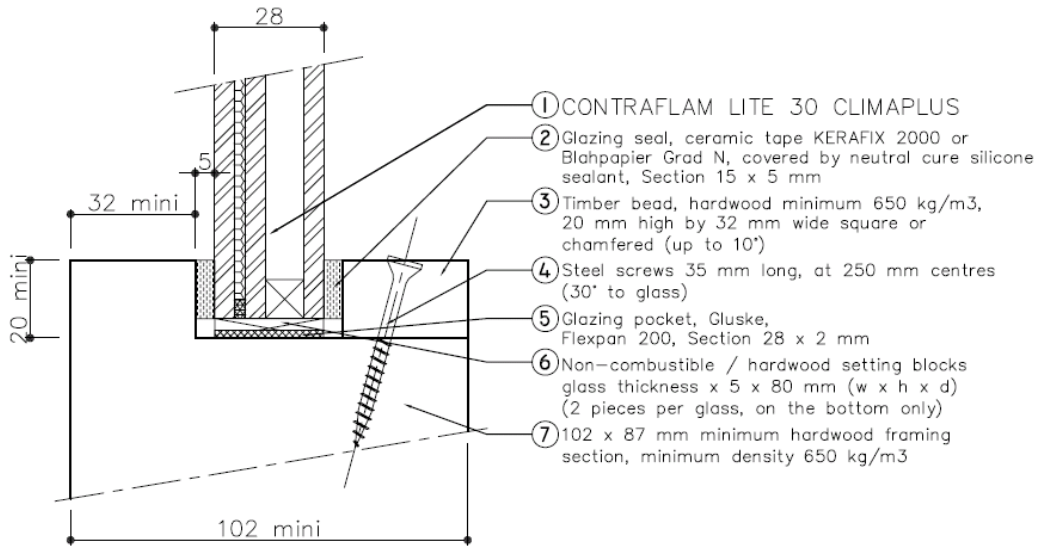
Figure 3.
Maximum Permitted Glass Dimensions

CERTIFICATE No CF 811A
VETROTECH SAINT-GOBAIN INTERNATIONAL

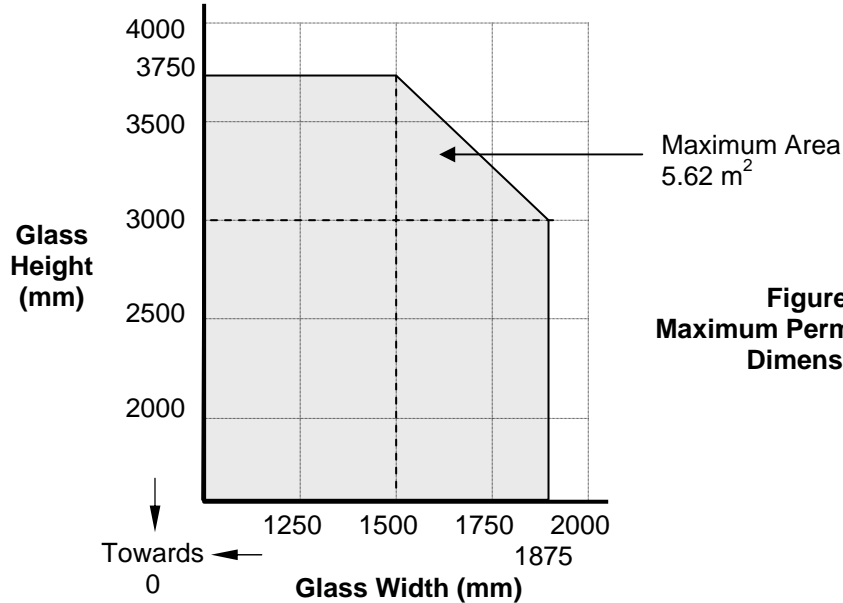
CONTRAFLAM FIRE RESISTING GLASS

Contraflam Lite 30 Climaplus Glass in timber framed screens for periods of 30 minutes integrity

The glass shall be glazed utilising the following basic specification:



The screens shall be no greater than 4000 mm high unless suitable tie backs and/or fire protected structural supports are provided.

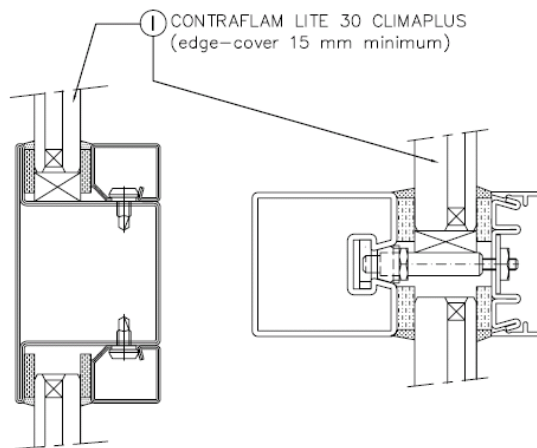


CERTIFICATE No CF 811A
VETROTECH SAINT-GOBAIN INTERNATIONAL

CONTRAFLAM FIRE RESISTING GLASS

Contraflam Lite 30 Climaplus Glass in steel framed screens for periods of 30 minutes integrity

The glass shall be installed into a previously tested or CERTIFIRE approved framing system (which is covered appropriately by test or assessment evidence) using pressure plate glazing, screw-fixed or clip-on retaining beads, see examples below. The glass shall be glazed into the screen as described in the table below and set on non-combustible setting blocks to determine the correct edge cover.



The screens shall be no greater than 4000 mm high unless suitable tie backs and/or fire protected structural supports are provided.

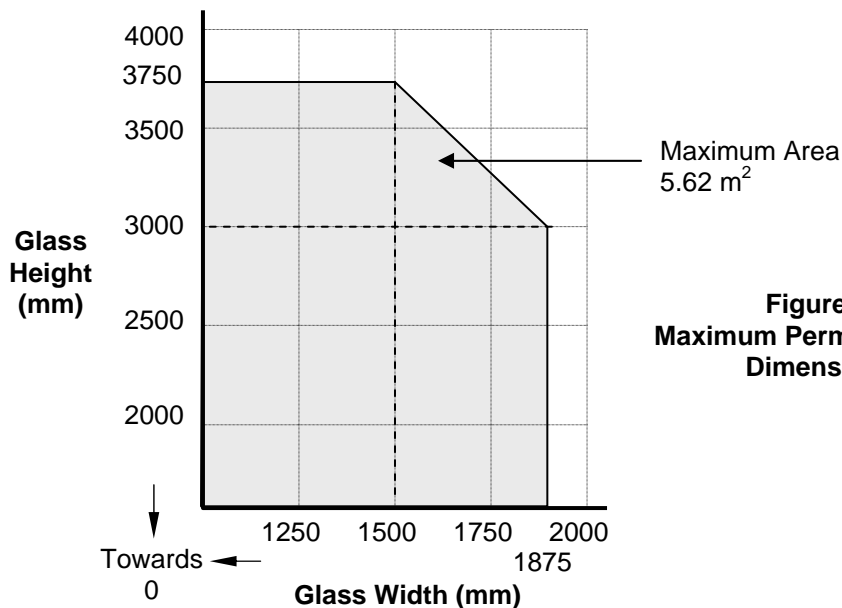


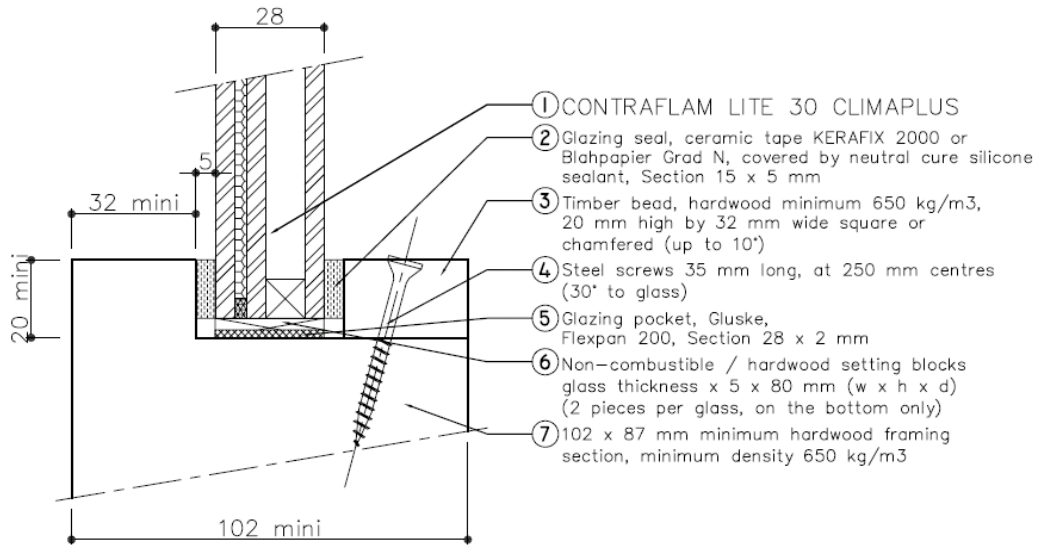
Figure 5.
Maximum Permitted Glass Dimensions

CERTIFICATE No CF 811A
VETROTECH SAINT-GOBAIN INTERNATIONAL

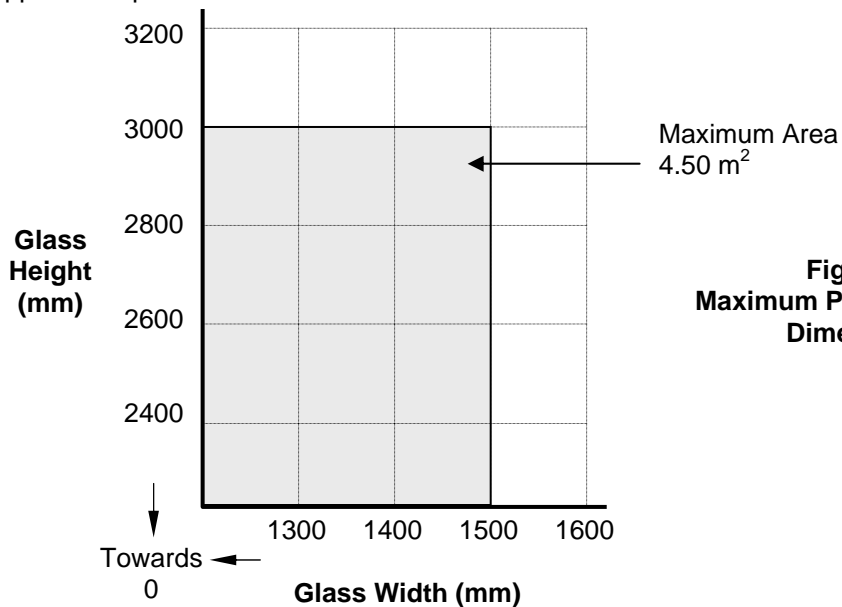
CONTRAFLAM FIRE RESISTING GLASS

Contraflam Lite 30 Climaplus Glass in timber framed screens for periods of 60 minutes integrity

The glass shall be glazed utilising the following basic specification:



The screens shall be no greater than 4000 mm high unless suitable tie backs and/or fire protected structural supports are provided.

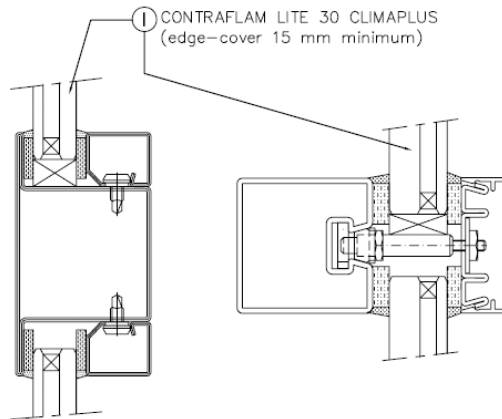


CERTIFICATE No CF 811A
VETROTECH SAINT-GOBAIN INTERNATIONAL

CONTRAFLAM FIRE RESISTING GLASS

Contraflam Lite 30 Climaplus Glass in steel framed screens for periods of 60 minutes integrity

The glass shall be installed into a previously tested or CERTIFIRE approved framing system (which is covered appropriately by test or assessment evidence) using pressure plate glazing, screw-fixed or clip-on retaining beads, see examples below. The glass shall be glazed into the screen as described in the table below and set on non-combustible setting blocks to determine the correct edge cover.



The screens shall be no greater than 4000 mm high unless suitable tie backs and/or fire protected structural supports are provided.

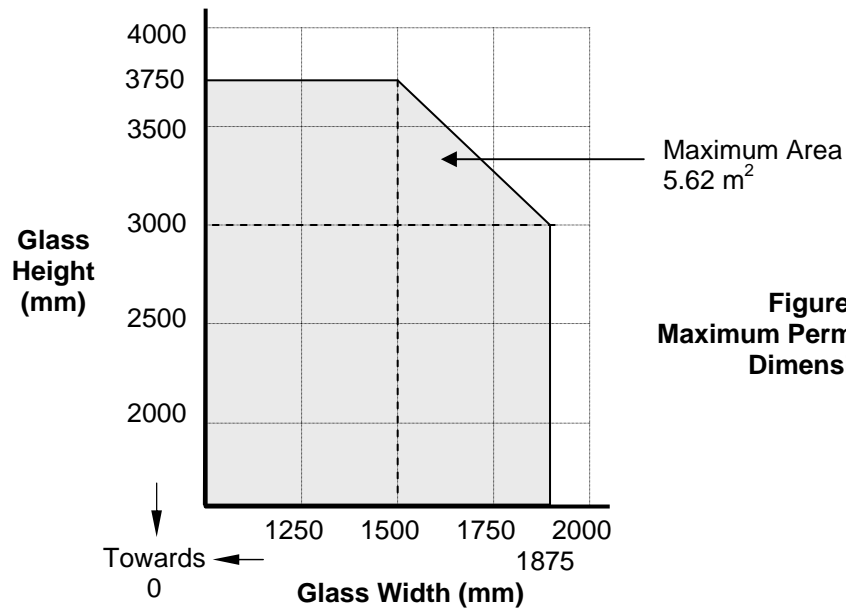


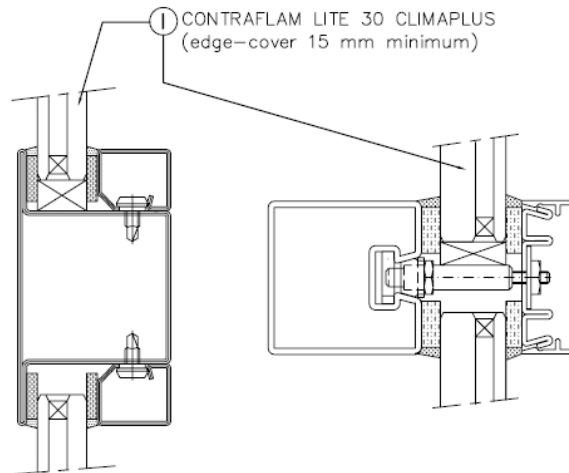
Figure 7.
Maximum Permitted Glass Dimensions

CERTIFICATE No CF 811A
VETROTECH SAINT-GOBAIN INTERNATIONAL

CONTRAFLAM FIRE RESISTING GLASS

Contraflam Lite 30 Climaplus Glass in steel framed screens for periods of 90 minutes integrity

The glass shall be installed into a previously tested or CERTIFIRE approved framing system (which is covered appropriately by test or assessment evidence) using pressure plate glazing, screw-fixed or clip-on retaining beads, see examples below. The glass shall be glazed into the screen as described in the table below and set on non-combustible setting blocks to determine the correct edge cover.



The screens shall be no greater than 4000 mm high unless suitable tie backs and/or fire protected structural supports are provided.

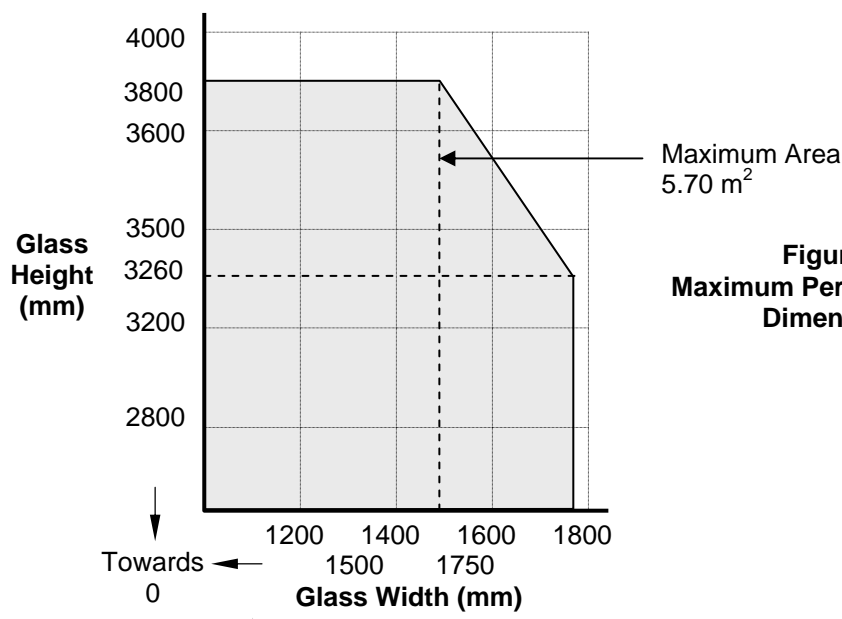
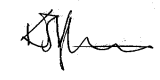


Figure 8.
Maximum Permitted Glass Dimensions

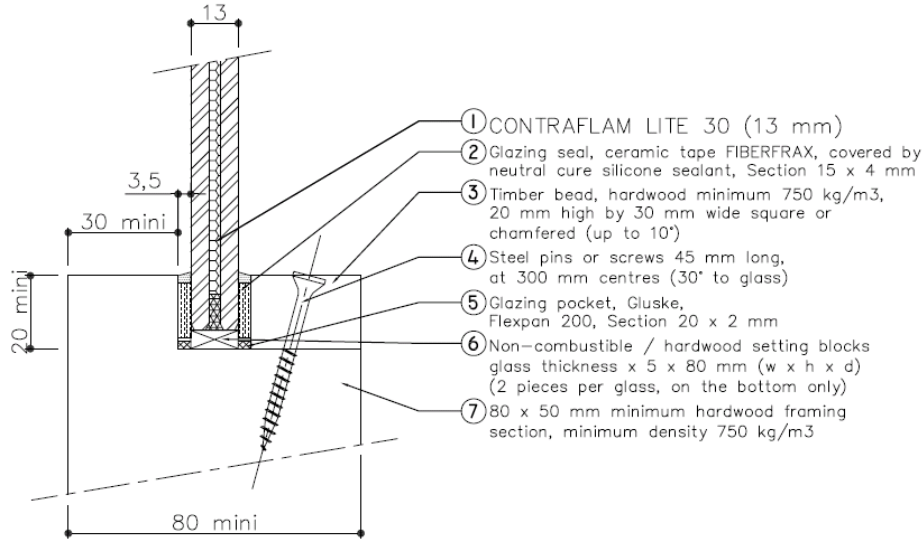


CERTIFICATE No CF 811A
VETROTECH SAINT-GOBAIN INTERNATIONAL

CONTRAFLAM FIRE RESISTING GLASS

Contraflam Lite 30 Glass in timber framed screens for periods of 60 minutes integrity and 15 minutes insulation

The glass shall be glazed utilising the following basic specification:



The screens shall be no greater than 4000 mm high unless suitable tie backs and/or fire protected structural supports are provided.

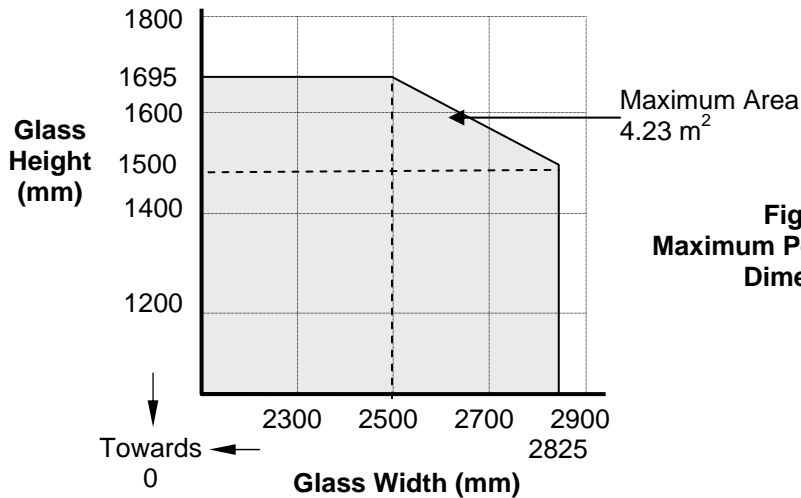


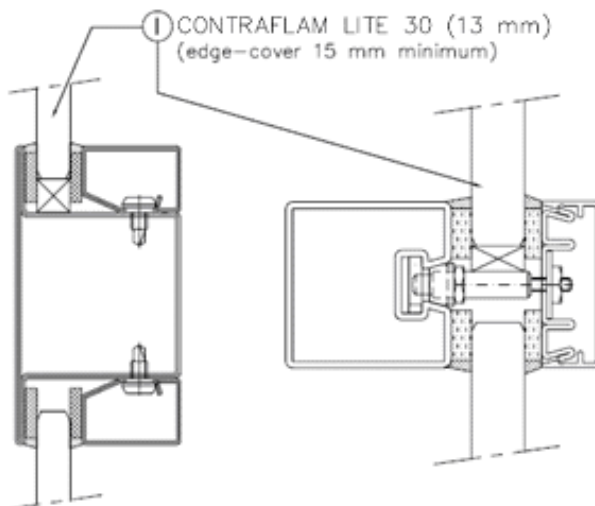
Figure 9.
Maximum Permitted Glass Dimensions

CERTIFICATE No CF 811A
VETROTECH SAINT-GOBAIN INTERNATIONAL

CONTRAFLAM FIRE RESISTING GLASS

Contraflam Lite 30 Glass in steel framed screens for periods of 60 minutes integrity and 15 minutes insulation

The glass shall be installed into a previously tested or CERTIFIRE approved framing system (which is covered appropriately by test or assessment evidence) using pressure plate glazing, screw-fixed or clip-on retaining beads, see examples below. The glass shall be glazed into the screen as described in the table below and set on non-combustible setting blocks to determine the correct edge cover.



The screens shall be no greater than 4000 mm high unless suitable tie backs and/or fire protected structural supports are provided.

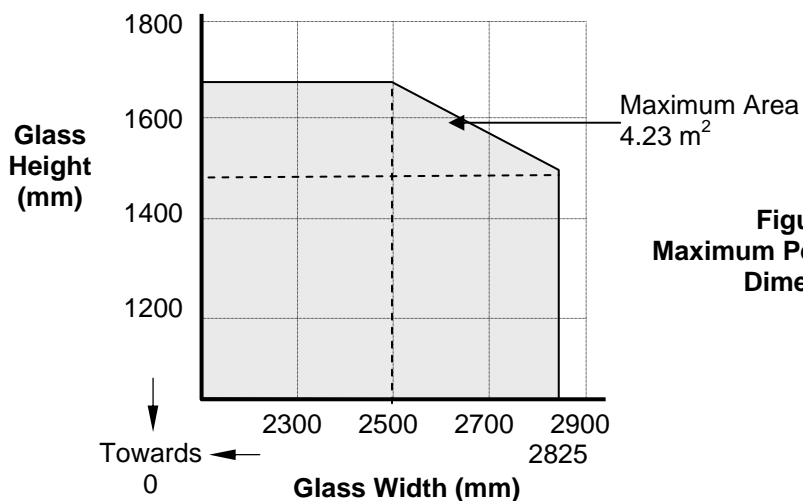
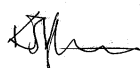


Figure 10.
Maximum Permitted Glass Dimensions

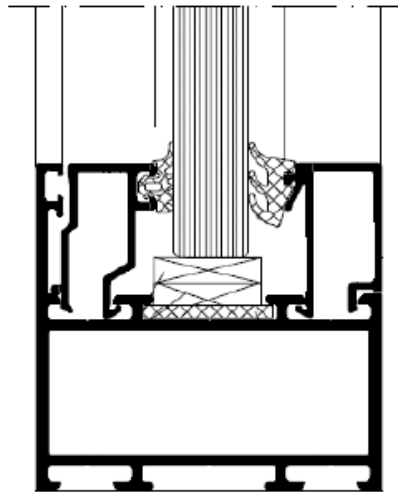


CERTIFICATE No CF 811A
VETROTECH SAINT-GOBAIN INTERNATIONAL

CONTRAFLAM FIRE RESISTING GLASS

Contraflam Lite 30 Glass in aluminium framed screens for periods of 30 minutes integrity

The glass shall be installed into a previously tested or CERTIFIRE approved framing system (which is covered appropriately by test or assessment evidence) using pressure plate glazing, screw-fixed or clip-on retaining beads, see examples below. The glass shall be glazed into the screen as described in the table below and set on non-combustible setting blocks to determine the correct edge cover.



The screens shall be no greater than 4000 mm high unless suitable tie backs and/or fire protected structural supports are provided.

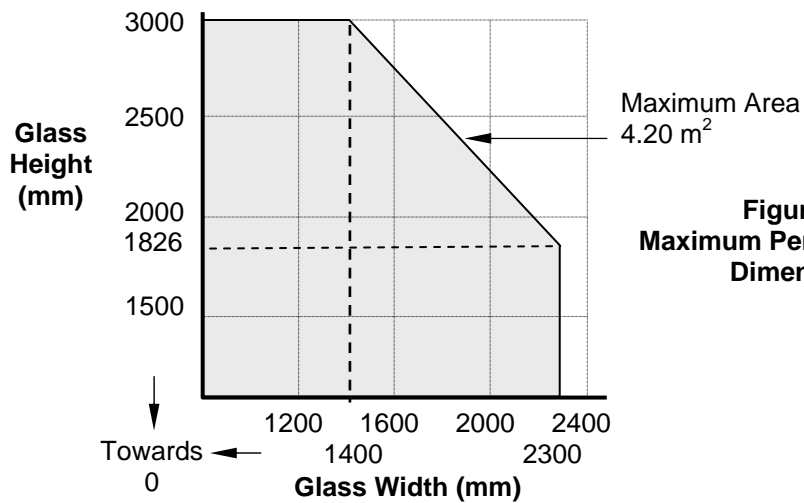


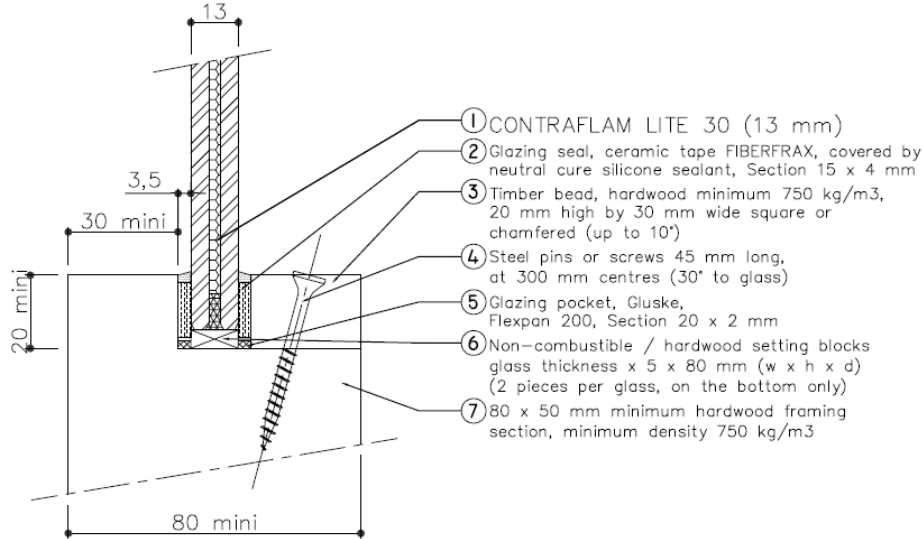
Figure 11.
Maximum Permitted Glass Dimensions

CERTIFICATE No CF 811A
VETROTECH SAINT-GOBAIN INTERNATIONAL

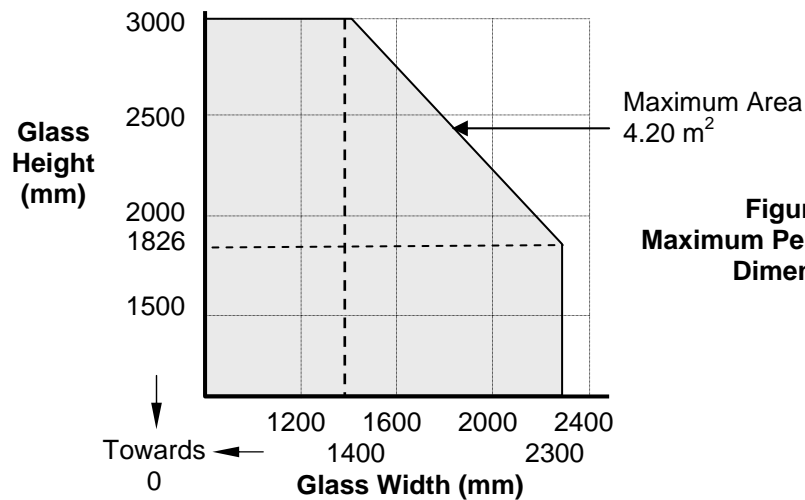
CONTRAFLAM FIRE RESISTING GLASS

Contraflam Lite 30 Glass in timber framed screens for periods of 30 minutes integrity

The glass shall be glazed utilising the following basic specification:



The screens shall be no greater than 4000 mm high unless suitable tie backs and/or fire protected structural supports are provided.

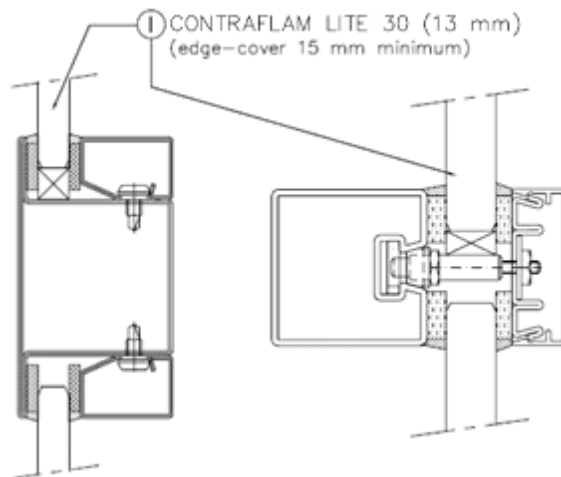


CERTIFICATE No CF 811A
VETROTECH SAINT-GOBAIN INTERNATIONAL

CONTRAFLAM FIRE RESISTING GLASS

Contraflam Lite 30 Glass in steel framed screens for periods of 30 minutes integrity

The glass shall be installed into a previously tested or CERTIFIRE approved framing system (which is covered appropriately by test or assessment evidence) using pressure plate glazing, screw-fixed or clip-on retaining beads, see examples below. The glass shall be glazed into the screen as described in the table below and set on non-combustible setting blocks to determine the correct edge cover.



The screens shall be no greater than 4000 mm high unless suitable tie backs and/or fire protected structural supports are provided.

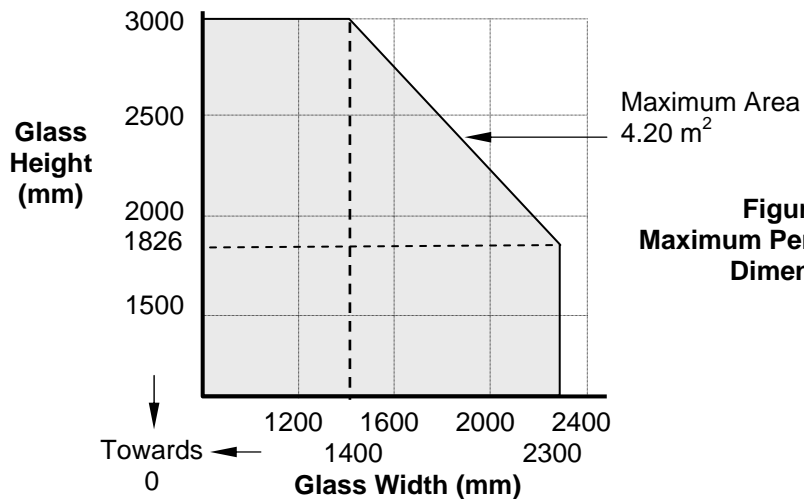


Figure 13.
Maximum Permitted Glass Dimensions

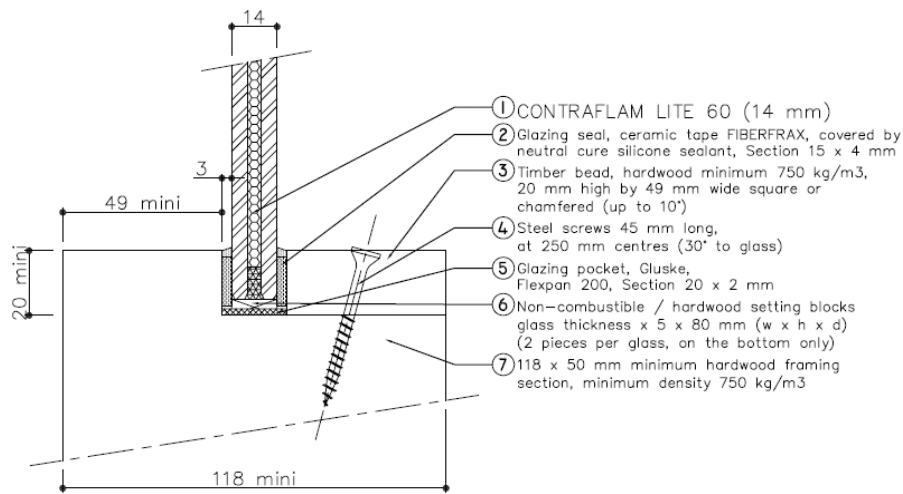


CERTIFICATE No CF 811A
VETROTECH SAINT-GOBAIN INTERNATIONAL

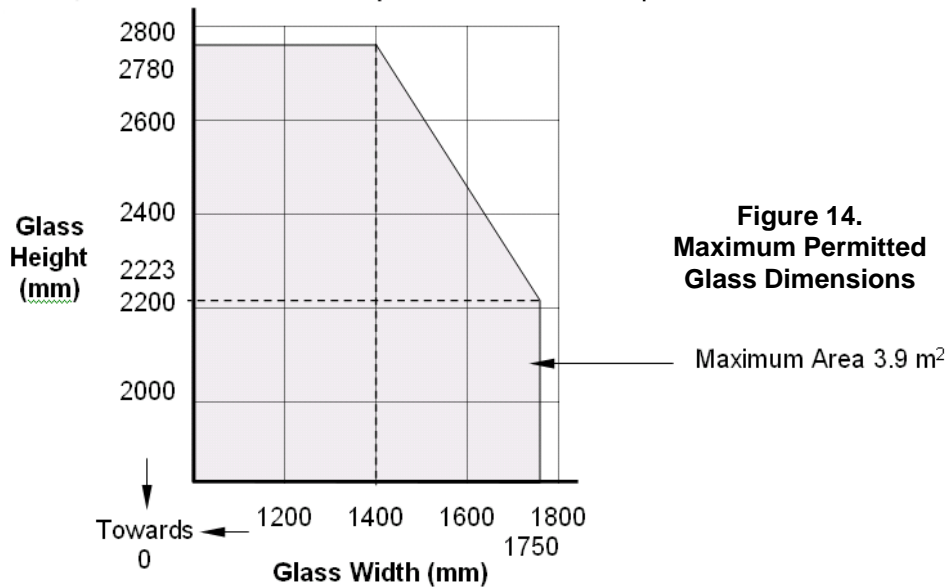
CONTRAFLAM FIRE RESISTING GLASS

Contraflam Lite 60 Glass in timber framed screens for periods of 60 minutes integrity and 15 minutes insulation

The glass shall be glazed utilising the following basic specification:



The screens shall be no greater than 4000 mm high unless suitable tie backs and/or fire protected structural supports are provided.

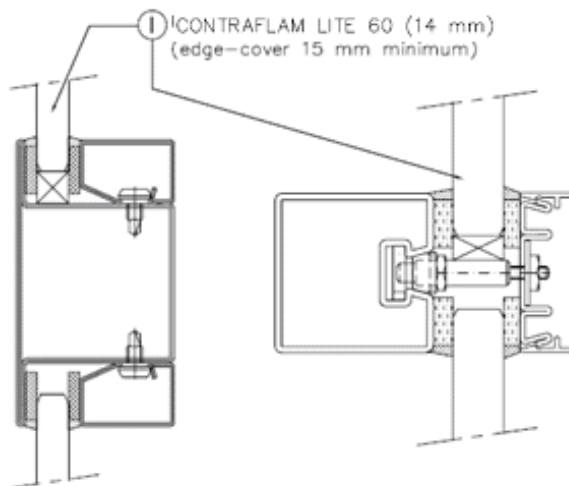


CERTIFICATE No CF 811A
VETROTECH SAINT-GOBAIN INTERNATIONAL

CONTRAFLAM FIRE RESISTING GLASS

Contraflam Lite 60 Glass in steel framed screens for periods of 60 minutes integrity and 15 minutes insulation

The glass shall be installed into a previously tested or CERTIFIRE approved framing system (which is covered appropriately by test or assessment evidence) using pressure plate glazing, screw-fixed or clip-on retaining beads, see examples below. The glass shall be glazed into the screen as described in the table below and set on non-combustible setting blocks to determine the correct edge cover.



The screens shall be no greater than 4000 mm high unless suitable tie backs and/or fire protected structural supports are provided.

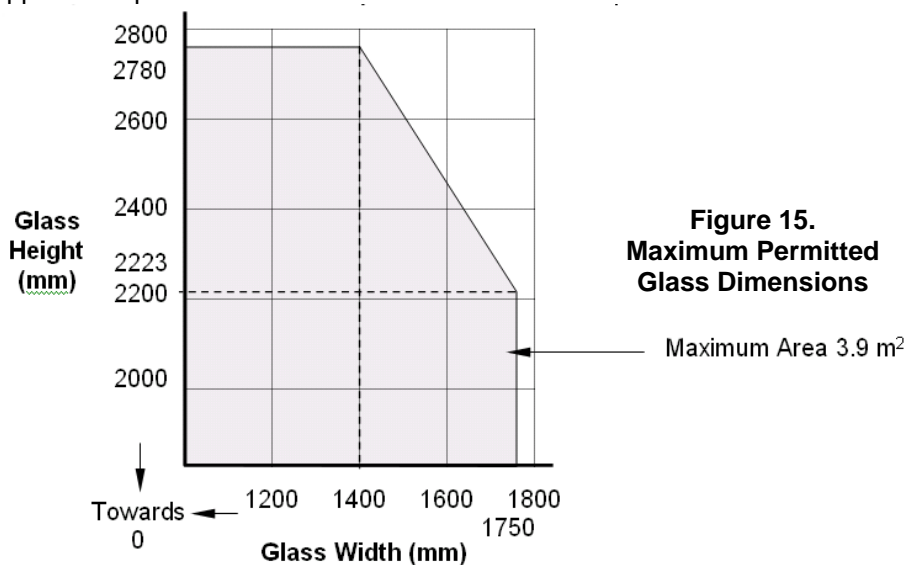


Figure 15.
Maximum Permitted
Glass Dimensions

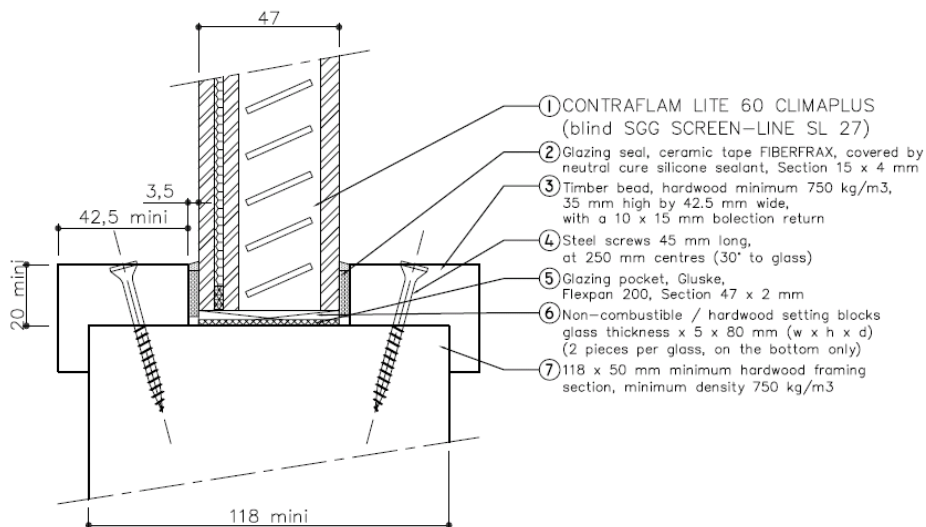
Maximum Area 3.9 m²

CERTIFICATE No CF 811A
VETROTECH SAINT-GOBAIN INTERNATIONAL

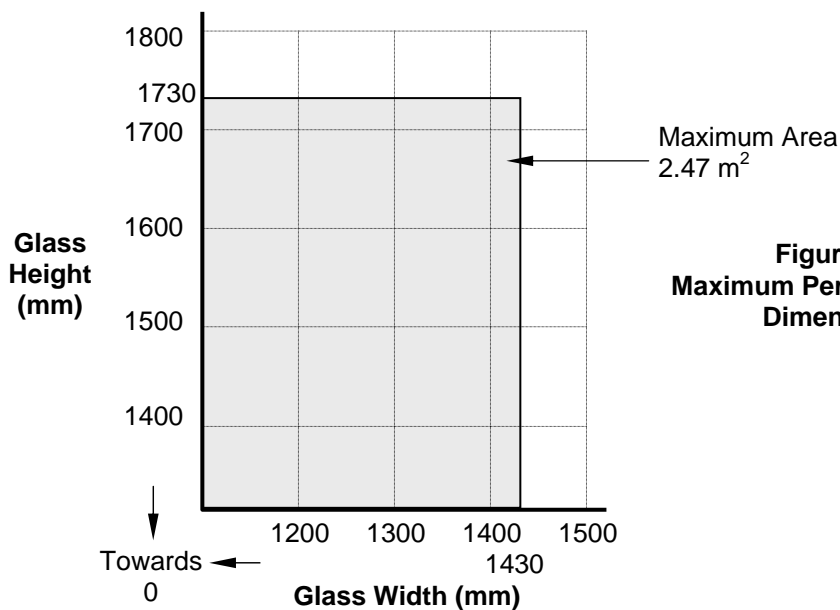
CONTRAFLAM FIRE RESISTING GLASS

Contraflam Lite 60 Climaplus Glass in timber framed screens for periods of 90 minutes integrity and 15 minutes insulation

The glass shall be glazed utilising the following basic specification:



The screens shall be no greater than 4000 mm high unless suitable tie backs and/or fire protected structural supports are provided.

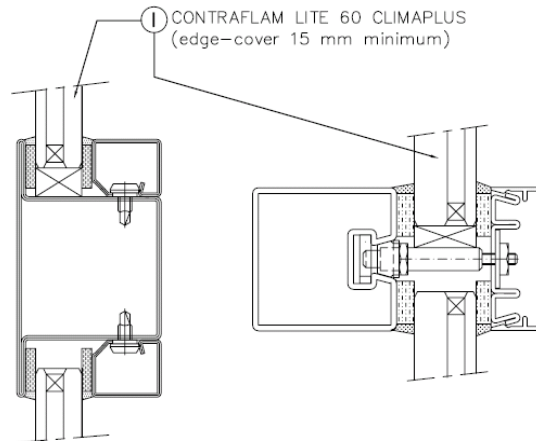


CERTIFICATE No CF 811A
VETROTECH SAINT-GOBAIN INTERNATIONAL

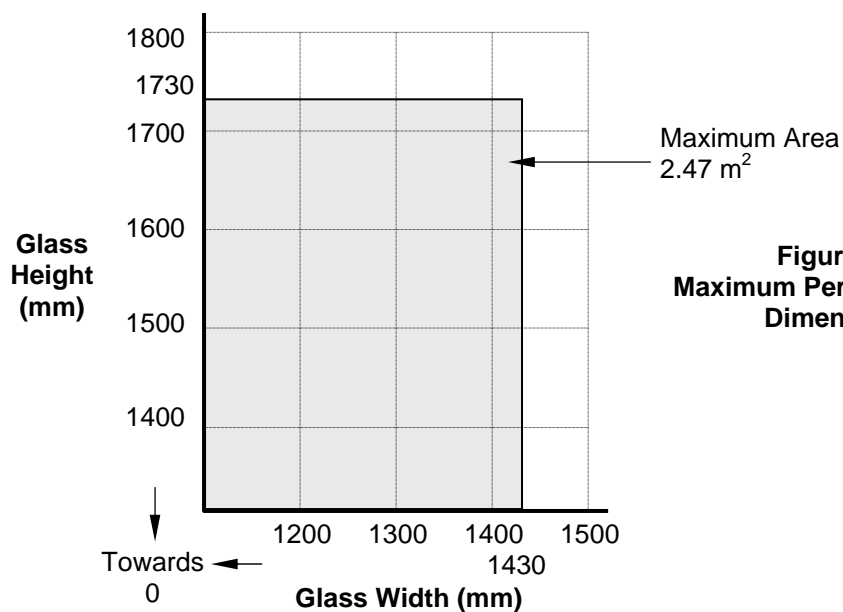
CONTRAFLAM FIRE RESISTING GLASS

Contraflam Lite 60 Climaplus Glass in steel framed screens for periods of 90 minutes integrity and 15 minutes insulation

The glass shall be installed into a previously tested or CERTIFIRE approved framing system (which is covered appropriately by test or assessment evidence) using pressure plate glazing, screw-fixed or clip-on retaining beads, see examples below. The glass shall be glazed into the screen as described in the table below and set on non-combustible setting blocks to determine the correct edge cover.



The screens shall be no greater than 4000 mm high unless suitable tie backs and/or fire protected structural supports are provided.

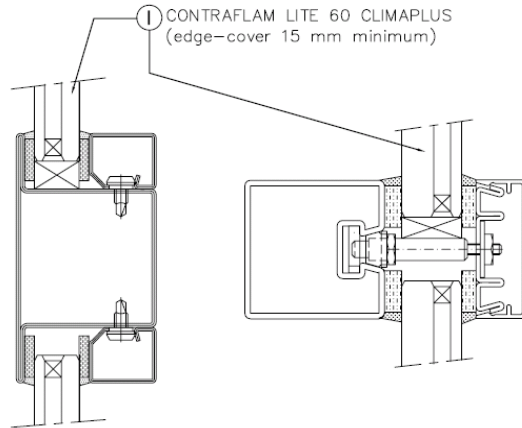


CERTIFICATE No CF 811A
VETROTECH SAINT-GOBAIN INTERNATIONAL

CONTRAFLAM FIRE RESISTING GLASS

Contraflam Lite 60 Climaplus Glass in steel framed screens for periods of 60 minutes integrity and 15 minutes insulation

The glass shall be installed into a previously tested or CERTIFIRE approved framing system (which is covered appropriately by test or assessment evidence) using pressure plate glazing, screw-fixed or clip-on retaining beads, see examples below. The glass shall be glazed into the screen as described in the table below and set on non-combustible setting blocks to determine the correct edge cover.



The screens shall be no greater than 4000 mm high unless suitable tie backs and/or fire protected structural supports are provided.

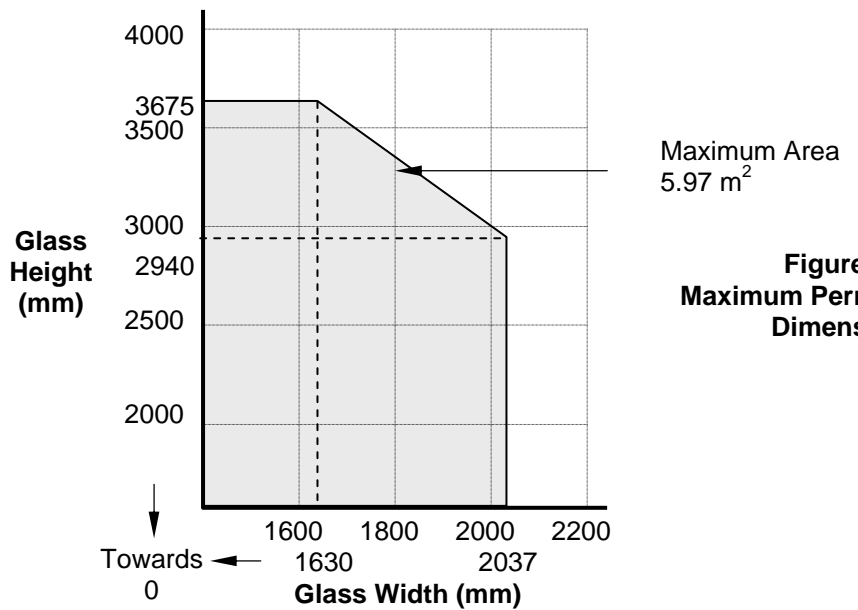


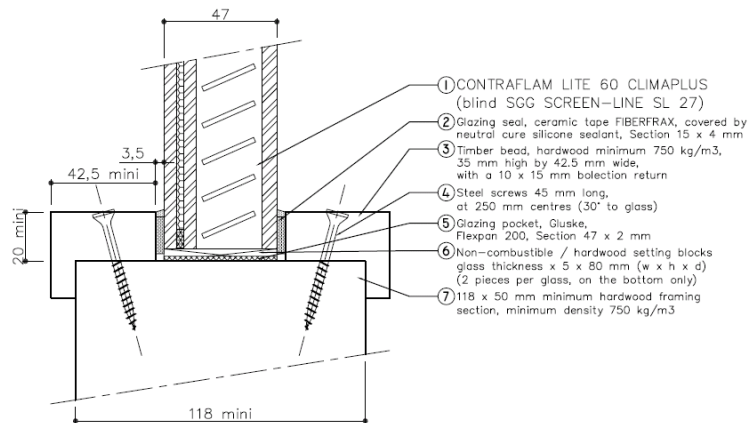
Figure 18.
Maximum Permitted Glass Dimensions

CERTIFICATE No CF 811A
VETROTECH SAINT-GOBAIN INTERNATIONAL

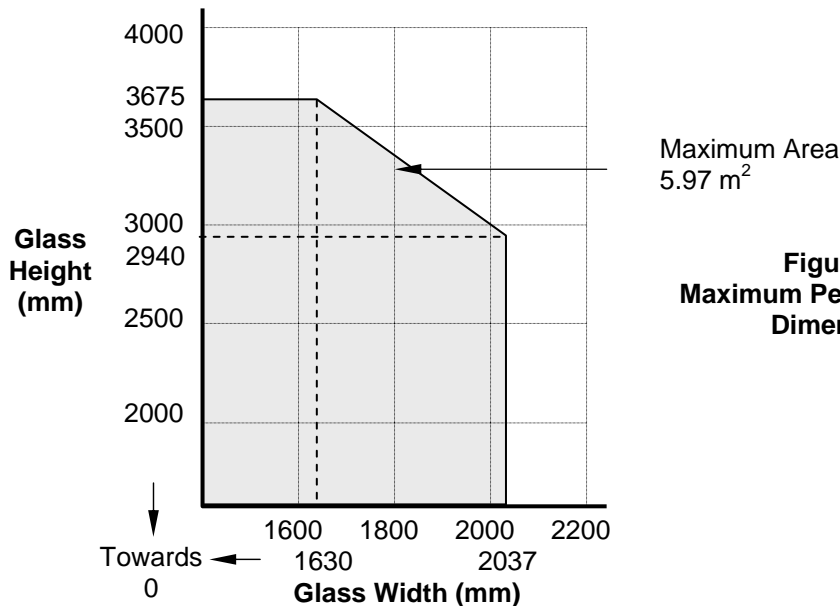
CONTRAFLAM FIRE RESISTING GLASS

Contraflam Lite 60 Climaplus Glass in timber framed screens for periods of 60 minutes integrity and 15 minutes insulation

The glass shall be glazed utilising the following basic specification:



The screens shall be no greater than 4000 mm high unless suitable tie backs and/or fire protected structural supports are provided.

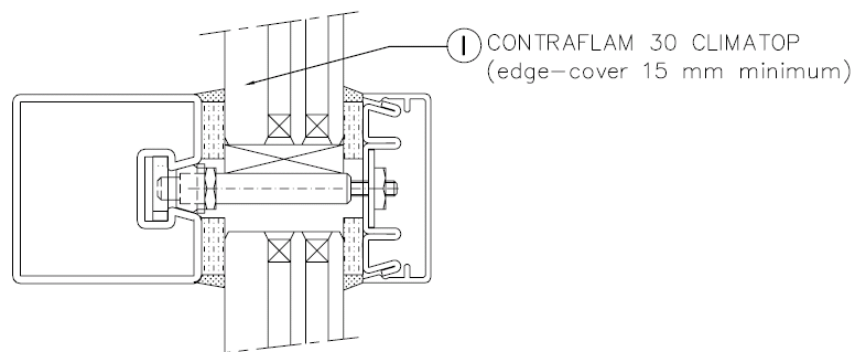


CERTIFICATE No CF 811A
VETROTECH SAINT-GOBAIN INTERNATIONAL

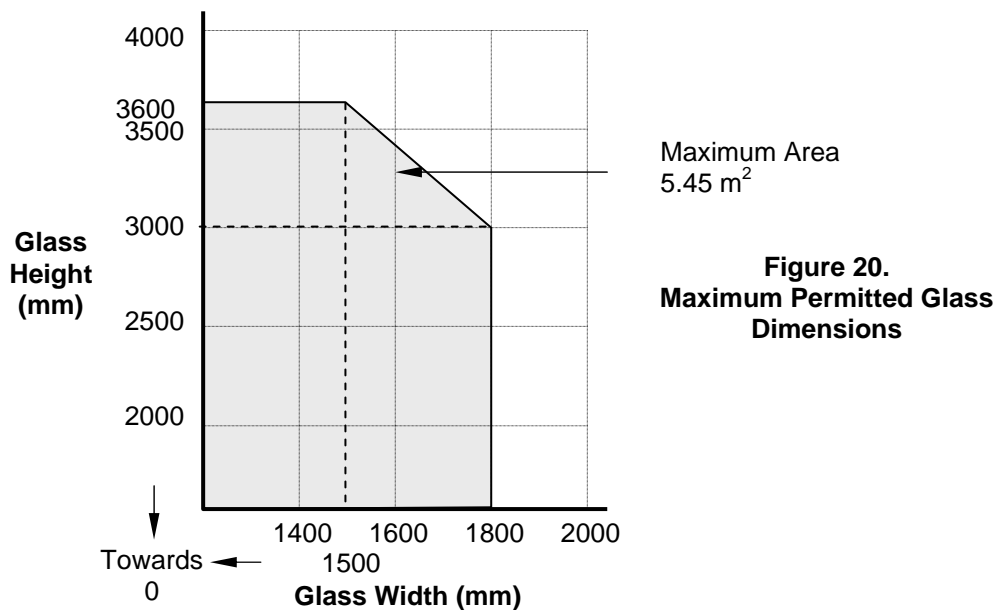
CONTRAFLAM FIRE RESISTING GLASS

Contraflam 30 Climatop Glass in steel framed screens for periods of 30 minutes integrity and insulation

The glass shall be installed into a previously tested or CERTIFIRE approved framing system (which is covered appropriately by test or assessment evidence) using pressure plate glazing, screw-fixed or clip-on retaining beads, see examples below. The glass shall be glazed into the screen as described in the table below and set on non-combustible setting blocks to determine the correct edge cover.



The screens shall be no greater than 4000 mm high unless suitable tie backs and/or fire protected structural supports are provided.

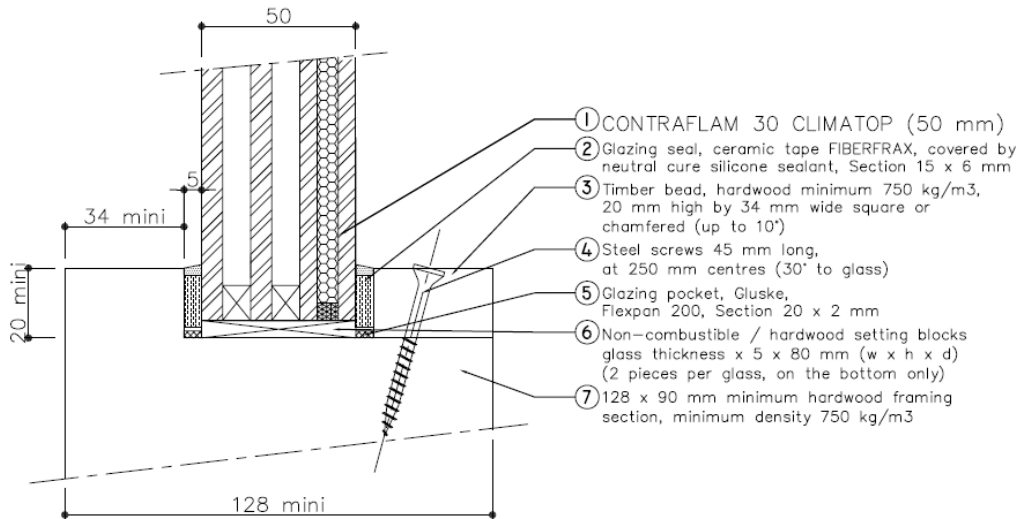


CERTIFICATE No CF 811A
VETROTECH SAINT-GOBAIN INTERNATIONAL

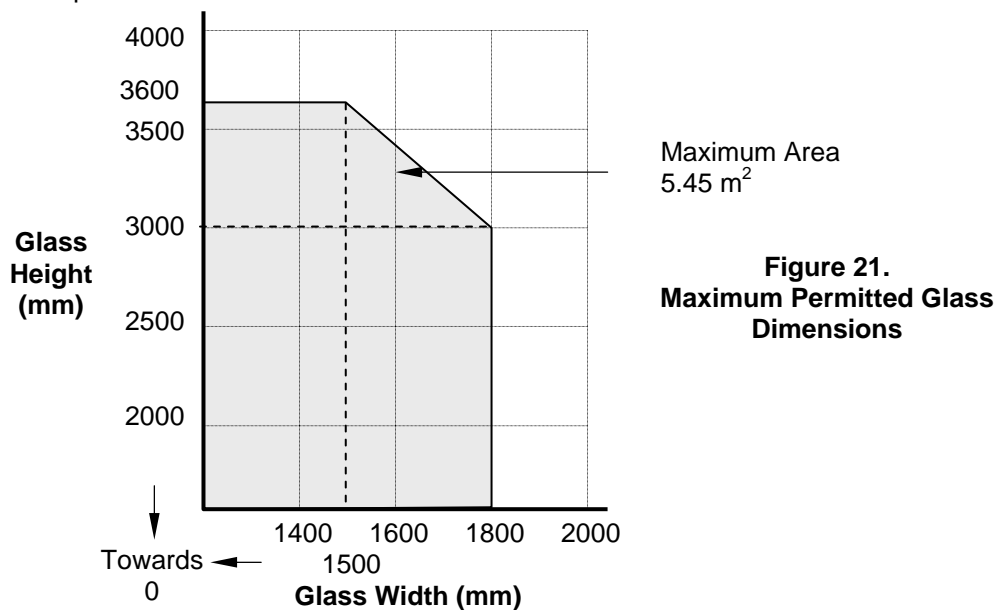
CONTRAFLAM FIRE RESISTING GLASS

Contraflam 30 Climatop Glass in timber framed screens for periods of 30 minutes integrity and insulation

The glass shall be glazed utilising the following basic specification:



The screens shall be no greater than 4000 mm high unless suitable tie backs and/or fire protected structural supports are provided.

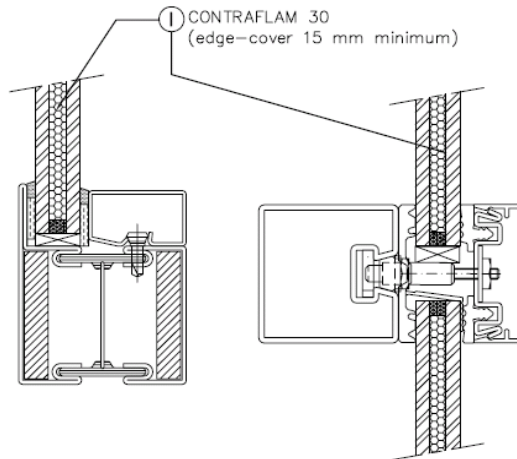


CERTIFICATE No CF 811A
VETROTECH SAINT-GOBAIN INTERNATIONAL

CONTRAFLAM FIRE RESISTING GLASS

Contraflam 30 Glass in steel framed screens for periods of 90 minutes integrity and 30 minutes insulation

The glass shall be installed into a previously tested or CERTIFIRE approved framing system (which is covered appropriately by test or assessment evidence) using pressure plate glazing, screw-fixed or clip-on retaining beads, see examples below. The glass shall be glazed into the screen as described in the table below and set on non-combustible setting blocks to determine the correct edge cover.



The screens shall be no greater than 4000 mm high unless suitable tie backs and/or fire protected structural supports are provided.

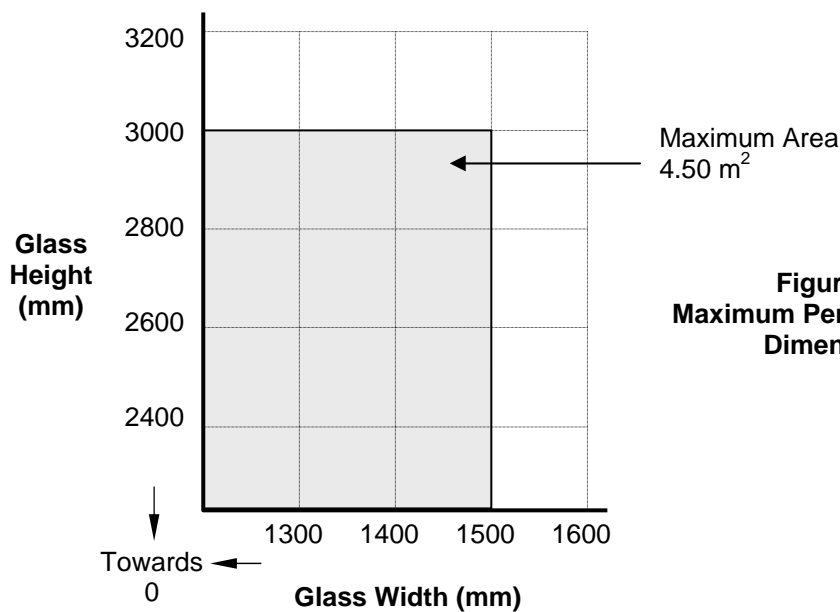


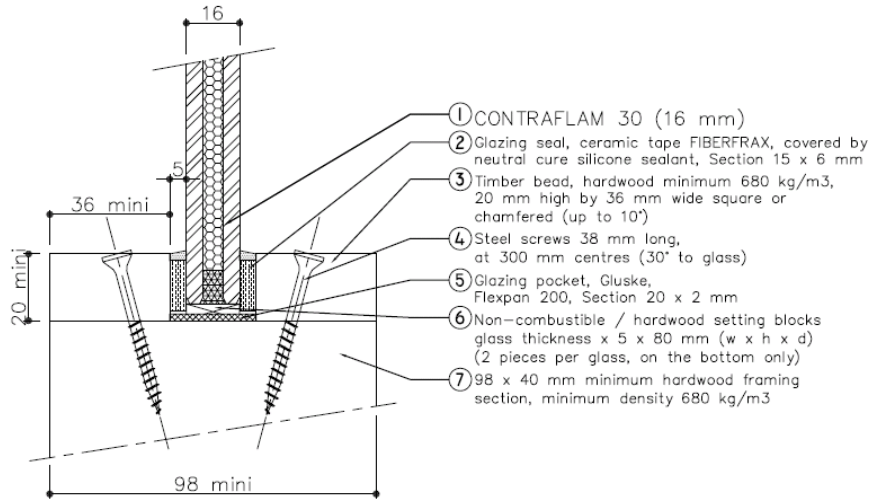
Figure 22.
Maximum Permitted Glass Dimensions

CERTIFICATE No CF 811A
VETROTECH SAINT-GOBAIN INTERNATIONAL

CONTRAFLAM FIRE RESISTING GLASS

Contraflam 30 Glass in timber framed screens for periods of 90 minutes integrity and 30 minutes insulation

The glass shall be glazed utilising the following basic specification:



The screens shall be no greater than 4000 mm high unless suitable tie backs and/or fire protected structural supports are provided.

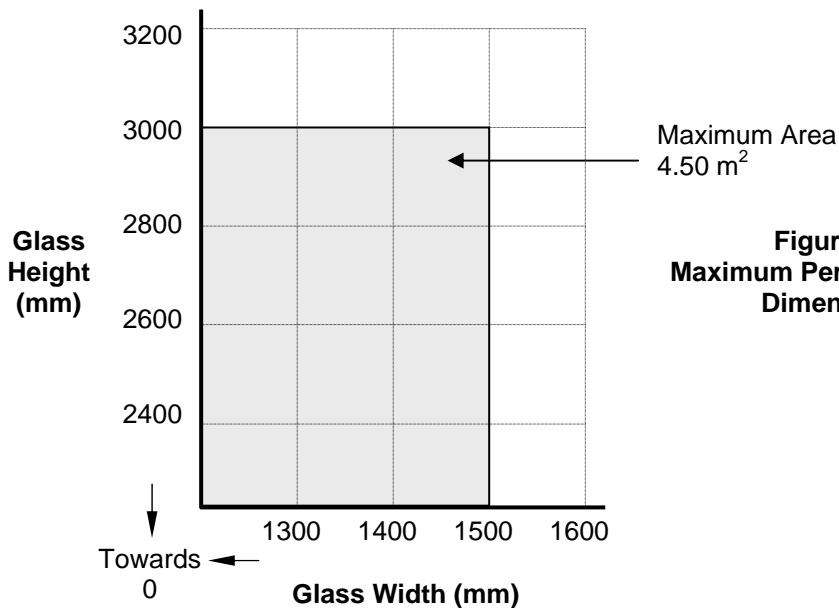


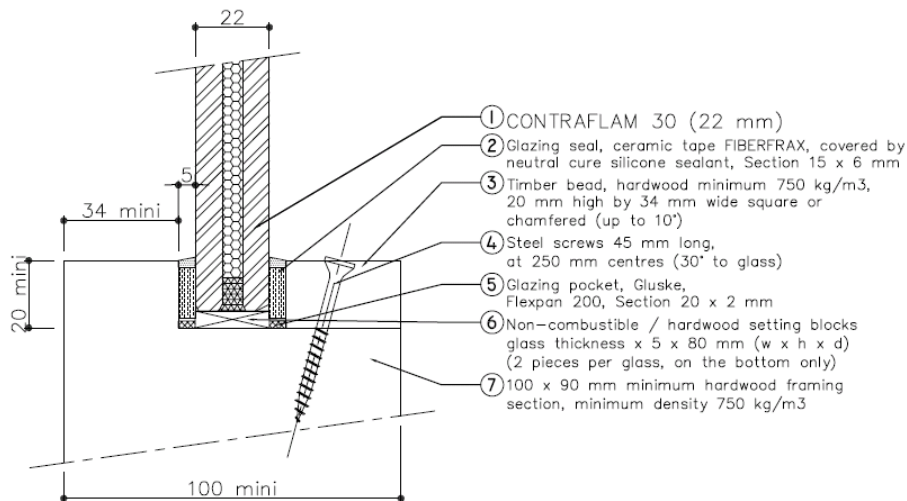
Figure 23.
Maximum Permitted Glass Dimensions

CERTIFICATE No CF 811A
VETROTECH SAINT-GOBAIN INTERNATIONAL

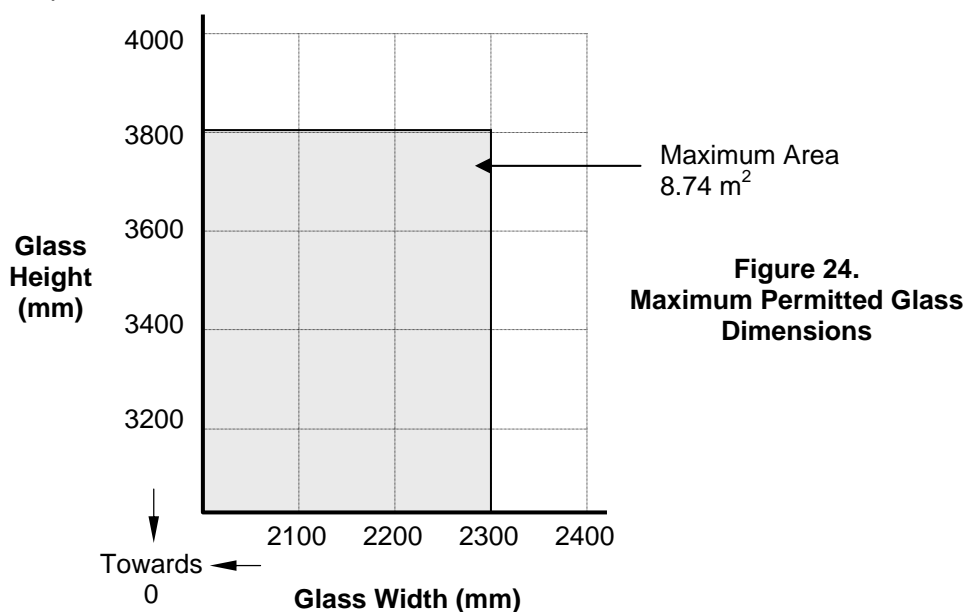
CONTRAFLAM FIRE RESISTING GLASS

Contraflam 30 Glass in timber framed screens for periods of 30 minutes integrity and insulation

The glass shall be glazed utilising the following basic specification:



The screens shall be no greater than 4000 mm high unless suitable tie backs and/or fire protected structural supports are provided.

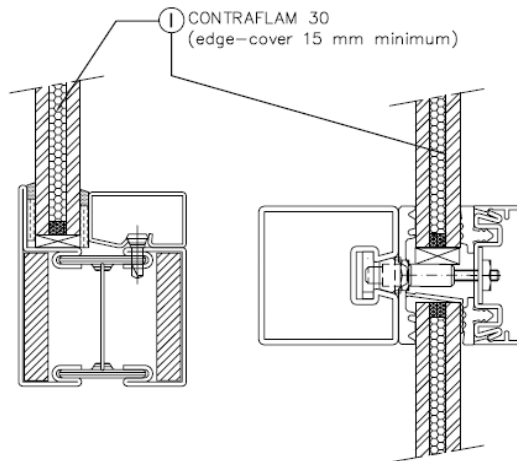


CERTIFICATE No CF 811A
VETROTECH SAINT-GOBAIN INTERNATIONAL

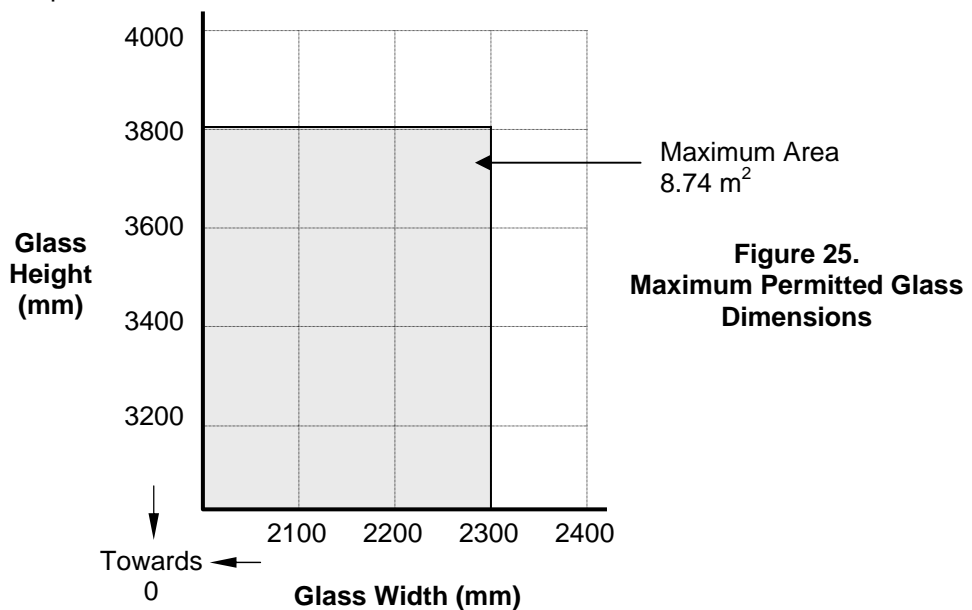
CONTRAFLAM FIRE RESISTING GLASS

Contraflam 30 Glass in steel framed screens for periods of 30 minutes integrity and insulation

The glass shall be installed into a previously tested or CERTIFIRE approved framing system (which is covered appropriately by test or assessment evidence) using pressure plate glazing, screw-fixed or clip-on retaining beads, see examples below. The glass shall be glazed into the screen as described in the table below and set on non-combustible setting blocks to determine the correct edge cover.



The screens shall be no greater than 4000 mm high unless suitable tie backs and/or fire protected structural supports are provided.

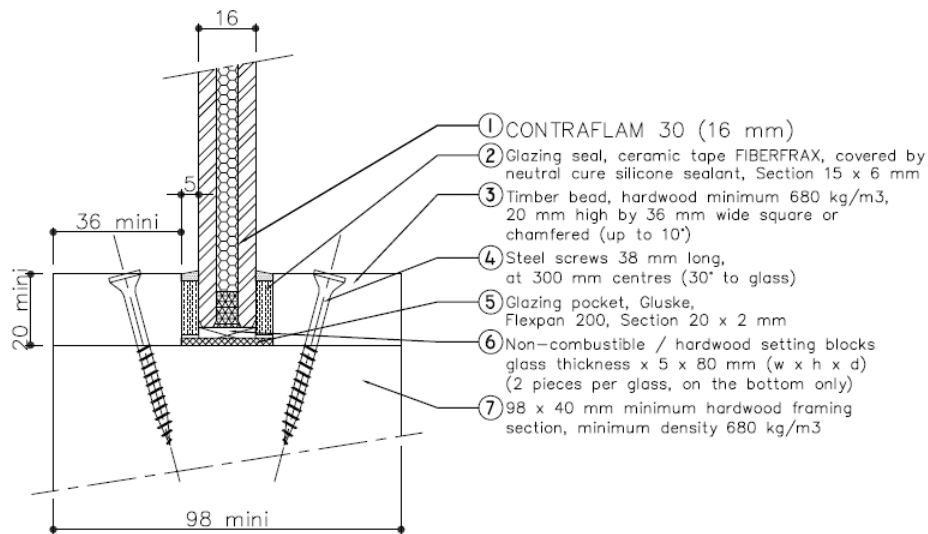


CERTIFICATE No CF 811A
VETROTECH SAINT-GOBAIN INTERNATIONAL

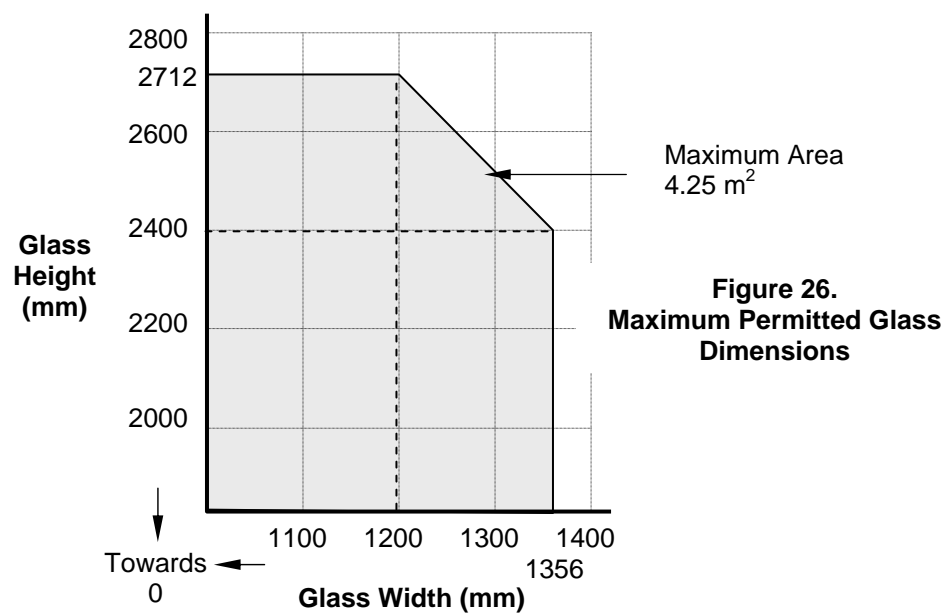
CONTRAFLAM FIRE RESISTING GLASS

Contraflam 30 Glass in timber framed screens for periods of 60 minutes integrity and 30 minutes insulation

The glass shall be glazed utilising the following basic specification:



The screens shall be no greater than 4000 mm high unless suitable tie backs and/or fire protected structural supports are provided.

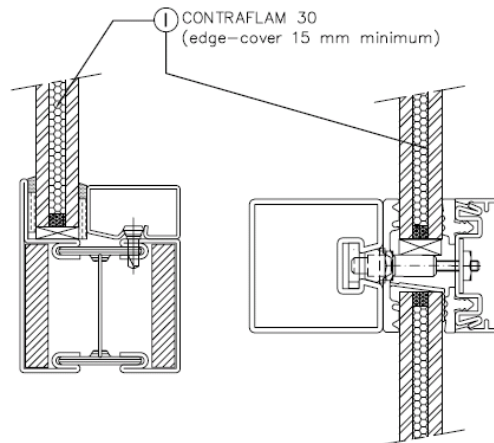


CERTIFICATE No CF 811A
VETROTECH SAINT-GOBAIN INTERNATIONAL

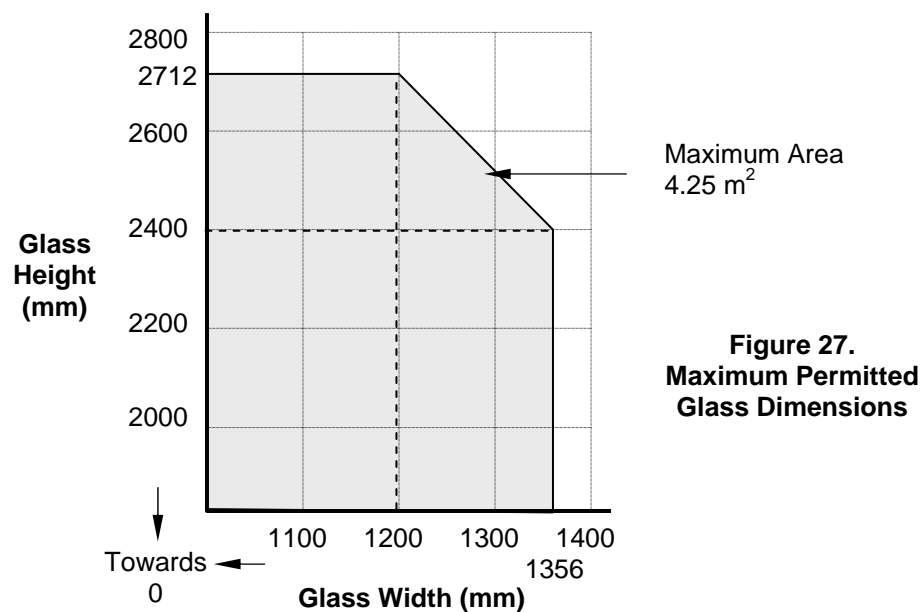
CONTRAFLAM FIRE RESISTING GLASS

Contraflam 30 Glass in steel framed screens for periods of 60 minutes integrity and 30 minutes insulation

The glass shall be installed into a previously tested or CERTIFIRE approved framing system (which is covered appropriately by test or assessment evidence) using pressure plate glazing, screw-fixed or clip-on retaining beads, see examples below. The glass shall be glazed into the screen as described in the table below and set on non-combustible setting blocks to determine the correct edge cover.



The screens shall be no greater than 4000 mm high unless suitable tie backs and/or fire protected structural supports are provided.

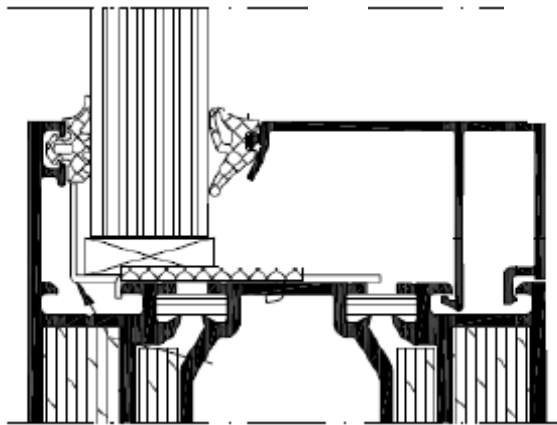


CERTIFICATE No CF 811A
VETROTECH SAINT-GOBAIN INTERNATIONAL

CONTRAFLAM FIRE RESISTING GLASS

Contraflam 30 Glass in aluminium framed screens for periods of 30 minutes integrity and insulation

The glass shall be installed into a previously tested or CERTIFIRE approved framing system (which is covered appropriately by test or assessment evidence) using pressure plate glazing, screw-fixed or clip-on retaining beads, see examples below. The glass shall be glazed into the screen as described in the table below and set on non-combustible setting blocks to determine the correct edge cover.



The screens shall be no greater than 4000 mm high unless suitable tie backs and/or fire protected structural supports are provided.

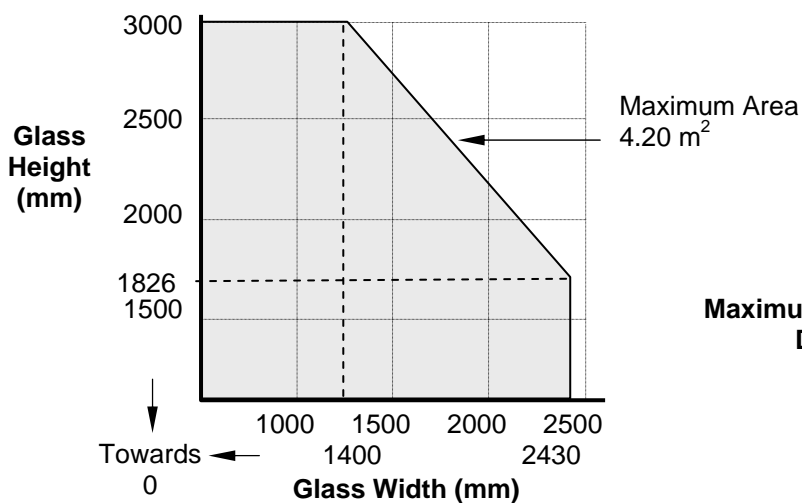


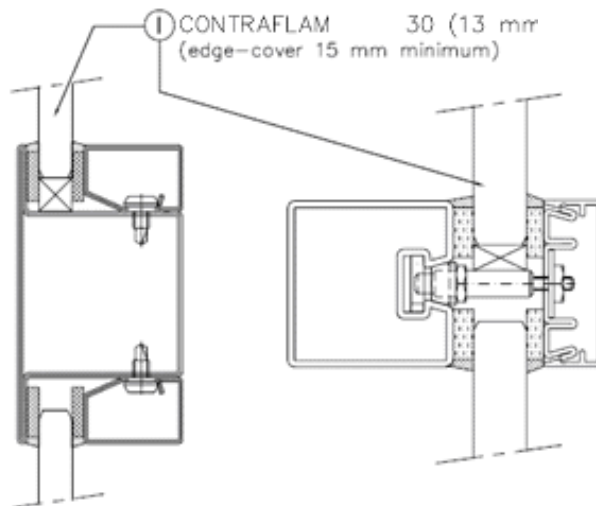
Figure 28.
Maximum Permitted Glass Dimensions

CERTIFICATE No CF 811A
VETROTECH SAINT-GOBAIN INTERNATIONAL

CONTRAFLAM FIRE RESISTING GLASS

Contraflam 30 Glass in steel framed screens for periods of 30 minutes integrity and insulation

The glass shall be installed into a previously tested or CERTIFIRE approved framing system (which is covered appropriately by test or assessment evidence) using pressure plate glazing, screw-fixed or clip-on retaining beads, see examples below. The glass shall be glazed into the screen as described in the table below and set on non-combustible setting blocks to determine the correct edge cover.



The screens shall be no greater than 4000 mm high unless suitable tie backs and/or fire protected structural supports are provided.

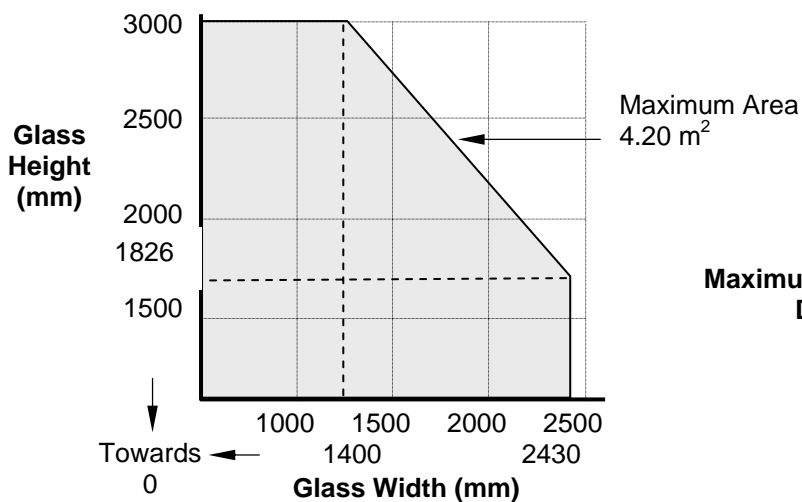


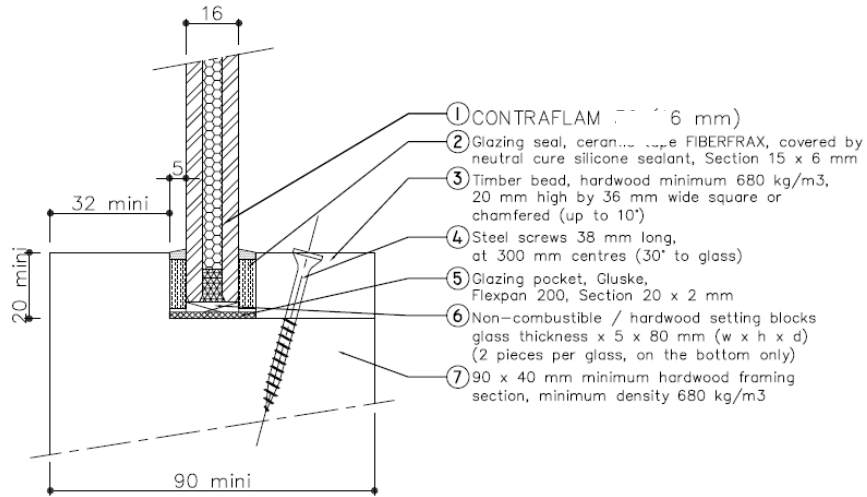
Figure 29.
Maximum Permitted Glass Dimensions

CERTIFICATE No CF 811A
VETROTECH SAINT-GOBAIN INTERNATIONAL

CONTRAFLAM FIRE RESISTING GLASS

Contraflam 30 Glass in timber framed screens for periods of 30 minutes integrity and insulation

The glass shall be glazed utilising the following basic specification:



The screens shall be no greater than 4000 mm high unless suitable tie backs and/or fire protected structural supports are provided.

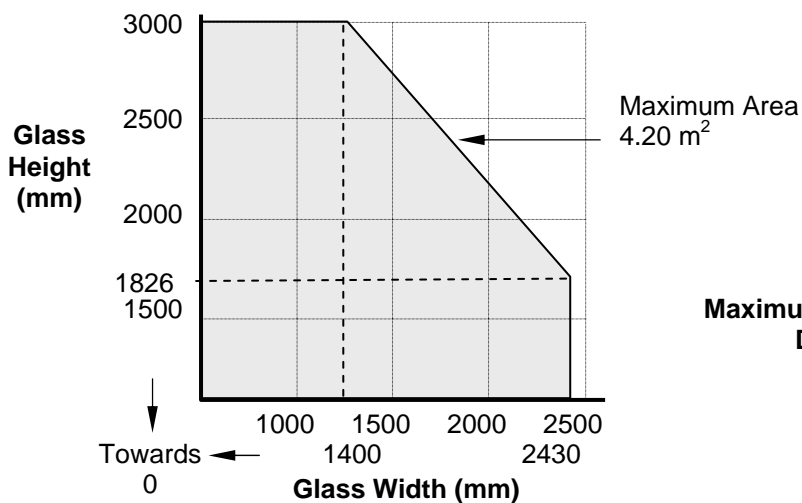


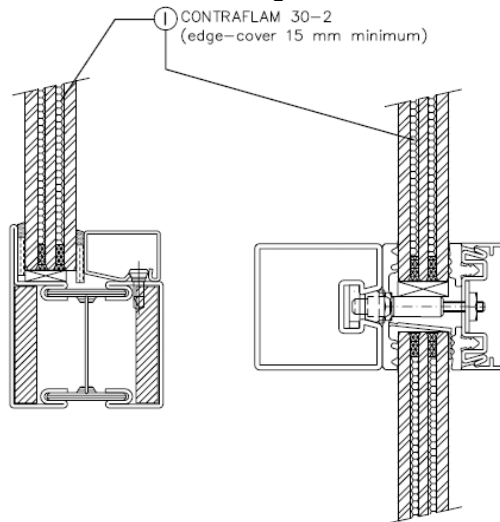
Figure 30.
Maximum Permitted Glass Dimensions

**CERTIFICATE No CF 811A
VETROTECH SAINT-GOBAIN INTERNATIONAL**

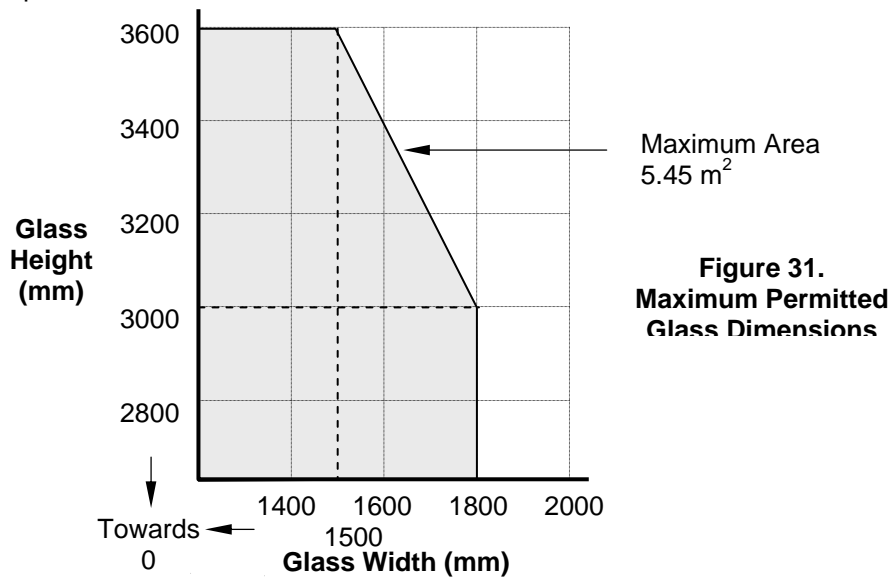
CONTRAFLAM FIRE RESISTING GLASS

Contraflam 30-2 Glass in steel framed screens for periods of 120 minutes integrity and 30 minutes insulation

The glass shall be installed into a previously tested or CERTIFIRE approved framing system (which is covered appropriately by test or assessment evidence) using pressure plate glazing, screw-fixed or clip-on retaining beads, see examples below. The glass shall be glazed into the screen as described in the table below and set on non-combustible setting blocks to determine the correct edge cover.



The screens shall be no greater than 4000 mm high unless suitable tie backs and/or fire protected structural supports are provided.

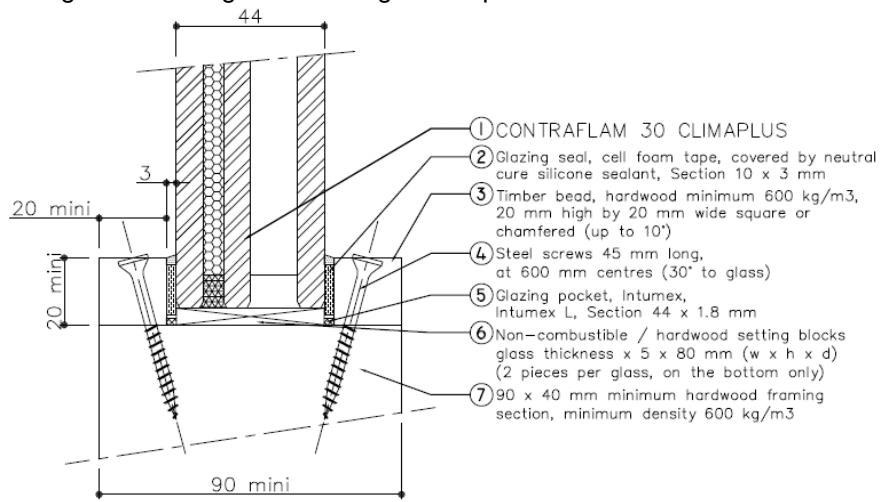



CERTIFICATE No CF 811A
VETROTECH SAINT-GOBAIN INTERNATIONAL

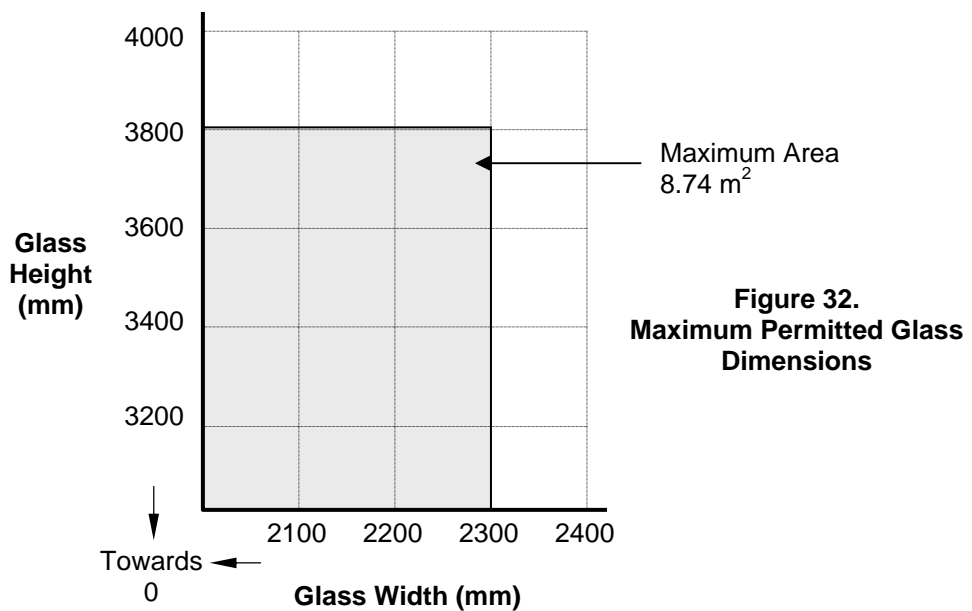
CONTRAFLAM FIRE RESISTING GLASS

Contraflam 30 Climaplus Glass in timber framed screens for periods of 30 minutes integrity and insulation

The glass shall be glazed utilising the following basic specification:



The screens shall be no greater than 4000 mm high unless suitable tie backs and/or fire protected structural supports are provided.

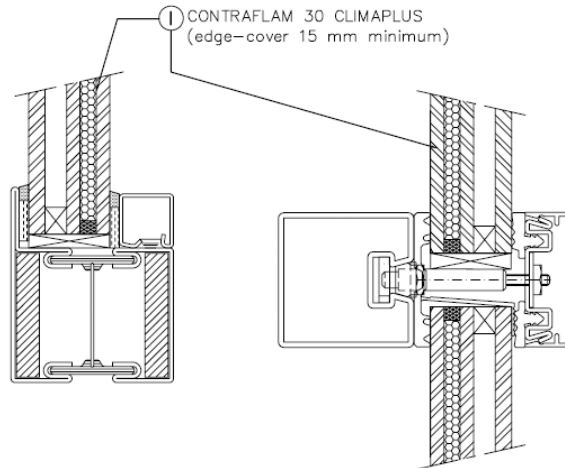


CERTIFICATE No CF 811A
VETROTECH SAINT-GOBAIN INTERNATIONAL

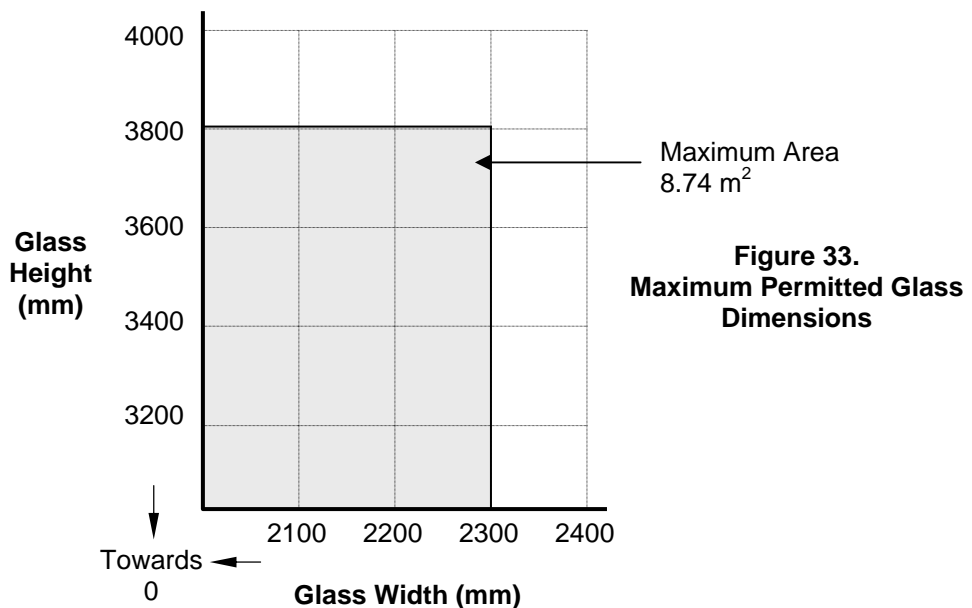
CONTRAFLAM FIRE RESISTING GLASS

Contraflam 30 Climaplus Glass in steel framed screens for periods of 30 minutes integrity and insulation

The glass shall be installed into a previously tested or CERTIFIRE approved framing system (which is covered appropriately by test or assessment evidence) using pressure plate glazing, screw-fixed or clip-on retaining beads, see examples below. The glass shall be glazed into the screen as described in the table below and set on non-combustible setting blocks to determine the correct edge cover.



The screens shall be no greater than 4000 mm high unless suitable tie backs and/or fire protected structural supports are provided.

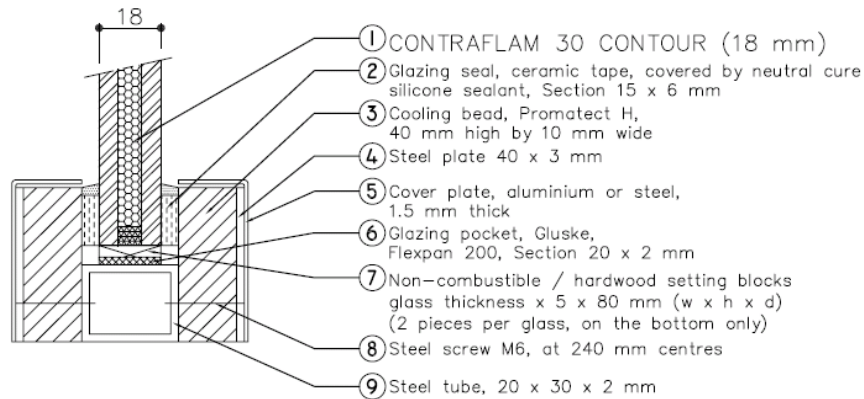


CERTIFICATE No CF 811A
VETROTECH SAINT-GOBAIN INTERNATIONAL

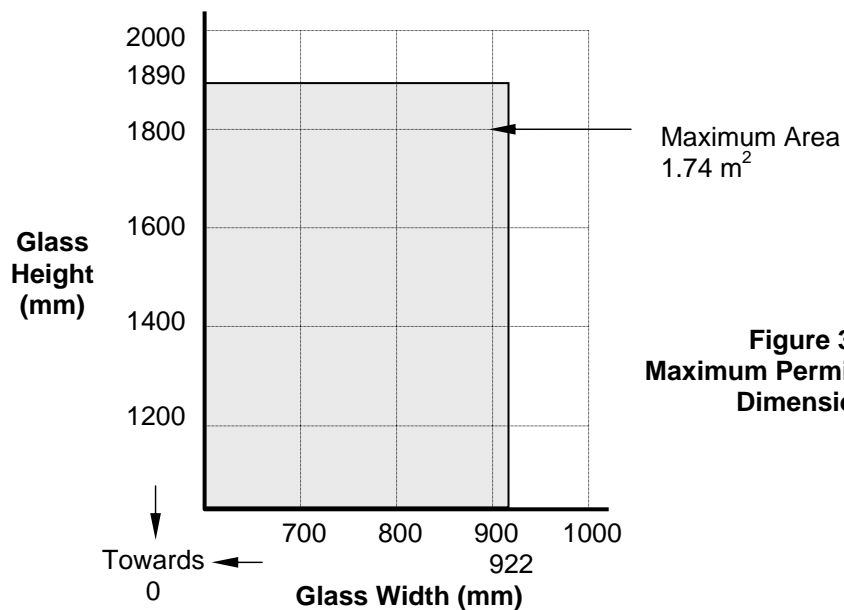
CONTRAFLAM FIRE RESISTING GLASS

Contraflam 30 Contour Glass in steel framed screens for periods of 120 minutes integrity and 30 minutes insulation

The glass shall be installed into a previously tested or CERTIFIRE approved framing system (which is covered appropriately by test or assessment evidence) using pressure plate glazing, screw-fixed or clip-on retaining beads, see examples below. The glass shall be glazed into the screen as described in the table below and set on non-combustible setting blocks to determine the correct edge cover.



The screens shall be no greater than 4000 mm high unless suitable tie backs and/or fire protected structural supports are provided.

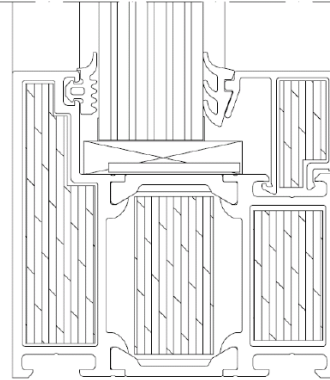


CERTIFICATE No CF 811A
VETROTECH SAINT-GOBAIN INTERNATIONAL

CONTRAFLAM FIRE RESISTING GLASS

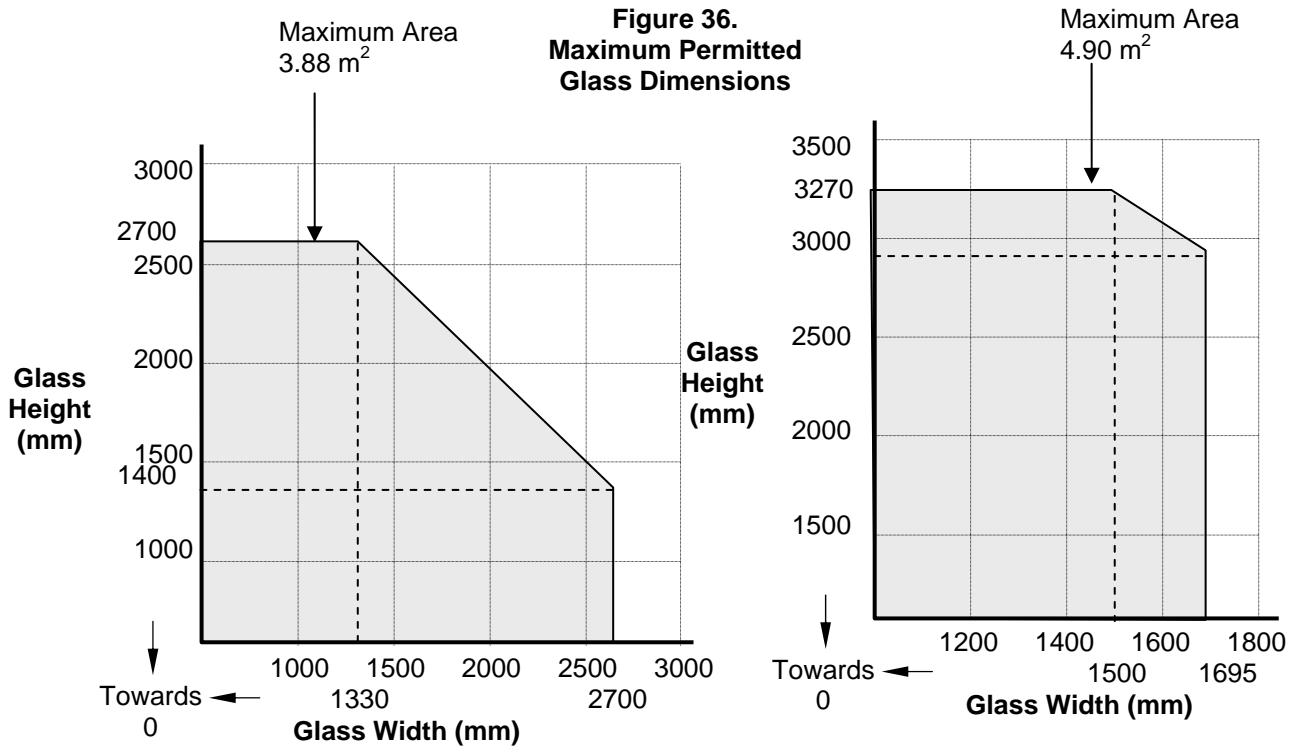
Contraflam 60 Glass in aluminium framed screens for periods of 60 minutes integrity and insulation

The glass shall be installed into a previously tested or CERTIFIRE approved framing system (which is covered appropriately by test or assessment evidence) using pressure plate glazing, screw-fixed or clip-on retaining beads, see examples below. The glass shall be glazed into the screen as described in the table below and set on non-combustible setting blocks to determine the correct edge cover.



The screens shall be no greater than 4000 mm high unless suitable tie backs and/or fire protected structural supports are provided.

Figure 36.
Maximum Permitted
Glass Dimensions

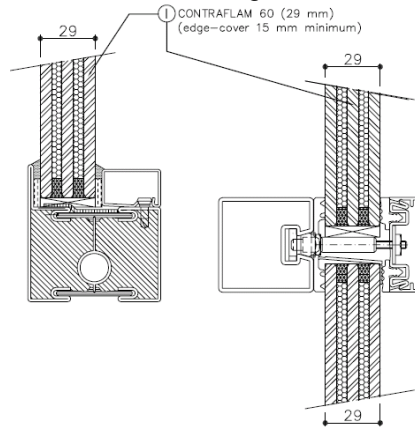



CERTIFICATE No CF 811A
VETROTECH SAINT-GOBAIN INTERNATIONAL

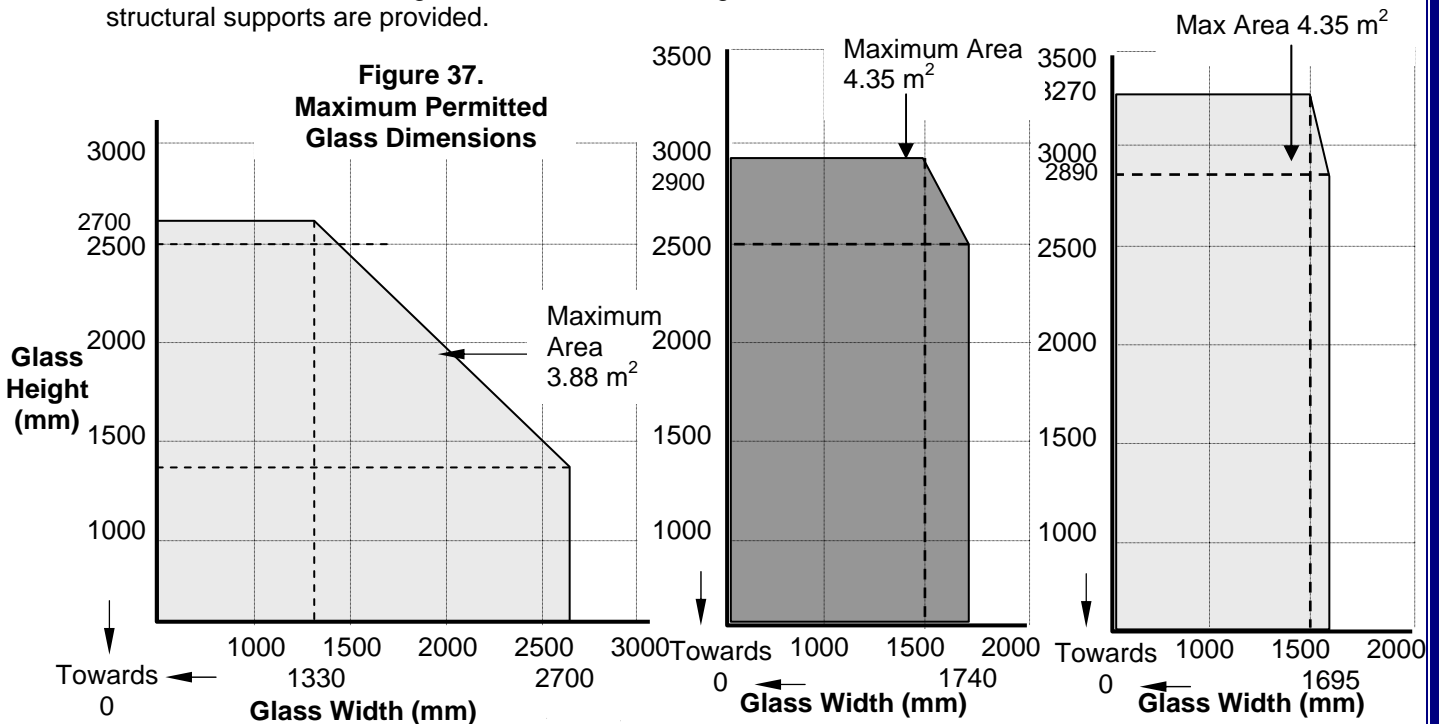
CONTRAFLAM FIRE RESISTING GLASS

Contraflam 60 Glass in steel framed screens for periods of 60 minutes integrity and insulation

The glass shall be installed into a previously tested or CERTIFIRE approved framing system (which is covered appropriately by test or assessment evidence) using pressure plate glazing, screw-fixed or clip-on retaining beads, see examples below. The glass shall be glazed into the screen as described in the table below and set on non-combustible setting blocks to determine the correct edge cover.



The screens shall be no greater than 4000 mm high unless suitable tie backs and/or fire protected structural supports are provided.

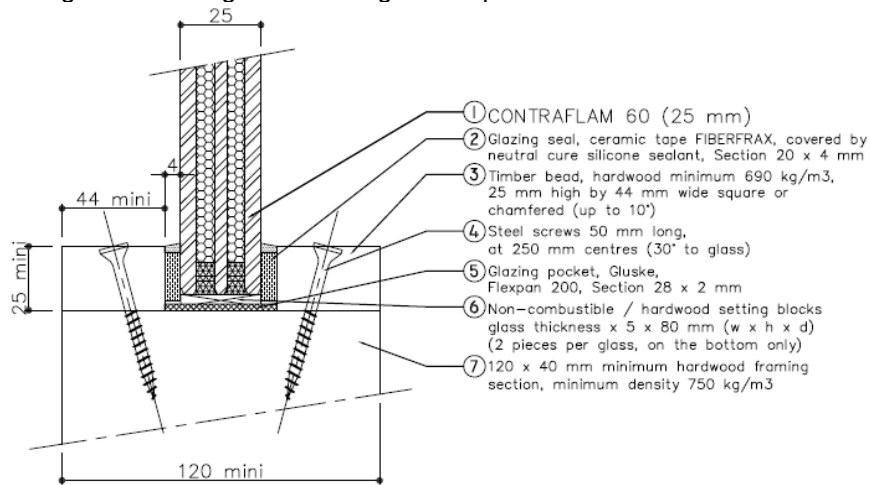


CERTIFICATE No CF 811A
VETROTECH SAINT-GOBAIN INTERNATIONAL

CONTRAFLAM FIRE RESISTING GLASS

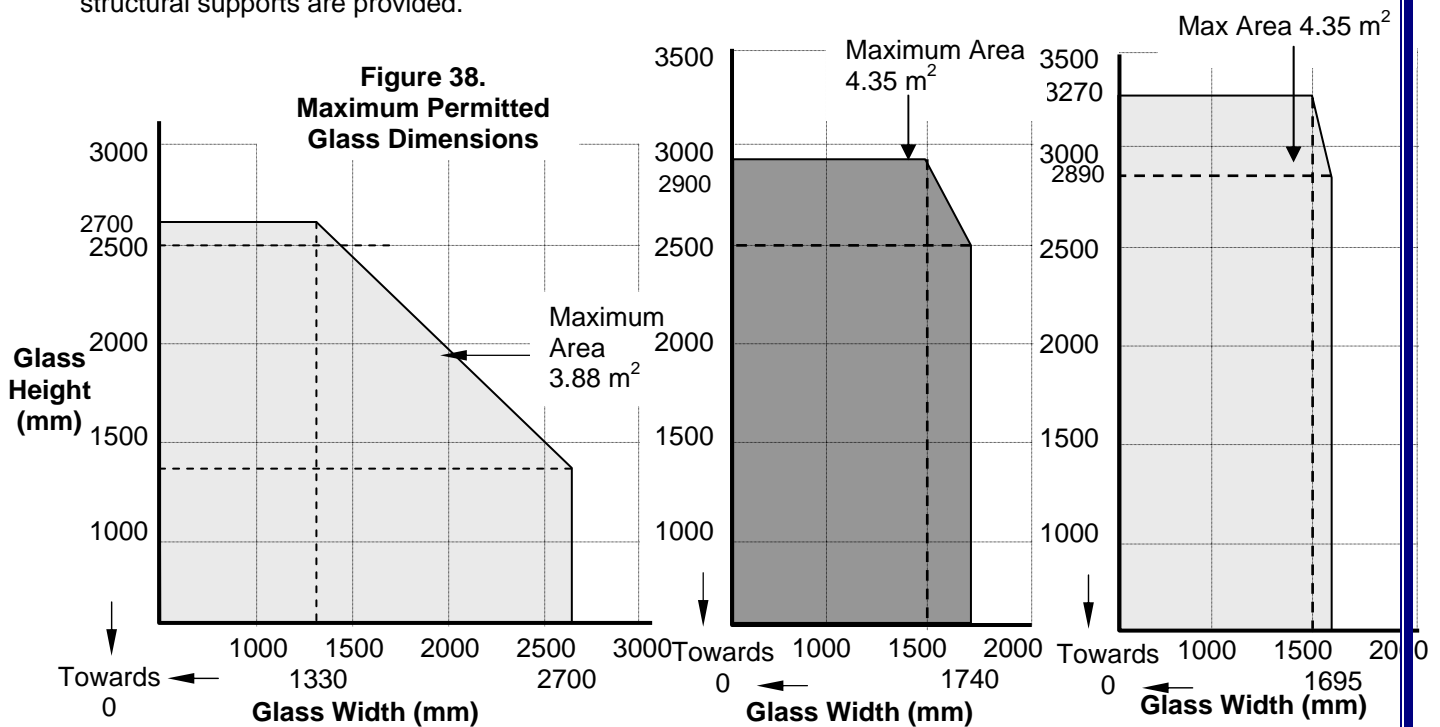
Contraflam 60 Glass in timber framed screens for periods of 60 minutes integrity and insulation

The glass shall be glazed utilising the following basic specification:



The screens shall be no greater than 4000 mm high unless suitable tie backs and/or fire protected structural supports are provided.

Figure 38.
Maximum Permitted Glass Dimensions

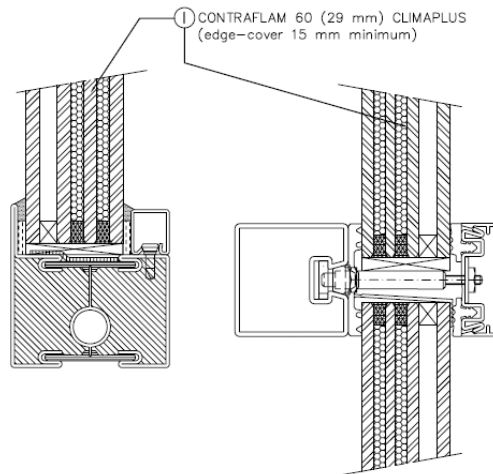



CERTIFICATE No CF 811A
VETROTECH SAINT-GOBAIN INTERNATIONAL

CONTRAFLAM FIRE RESISTING GLASS

Contraflam 60 Climaplus Glass in steel framed screens for periods of 60 minutes integrity and insulation

The glass shall be installed into a previously tested or CERTIFIRE approved framing system (which is covered appropriately by test or assessment evidence) using pressure plate glazing, screw-fixed or clip-on retaining beads, see examples below. The glass shall be glazed into the screen as described in the table below and set on non-combustible setting blocks to determine the correct edge cover.



The screens shall be no greater than 4000 mm high unless suitable tie backs and/or fire protected structural supports are provided.

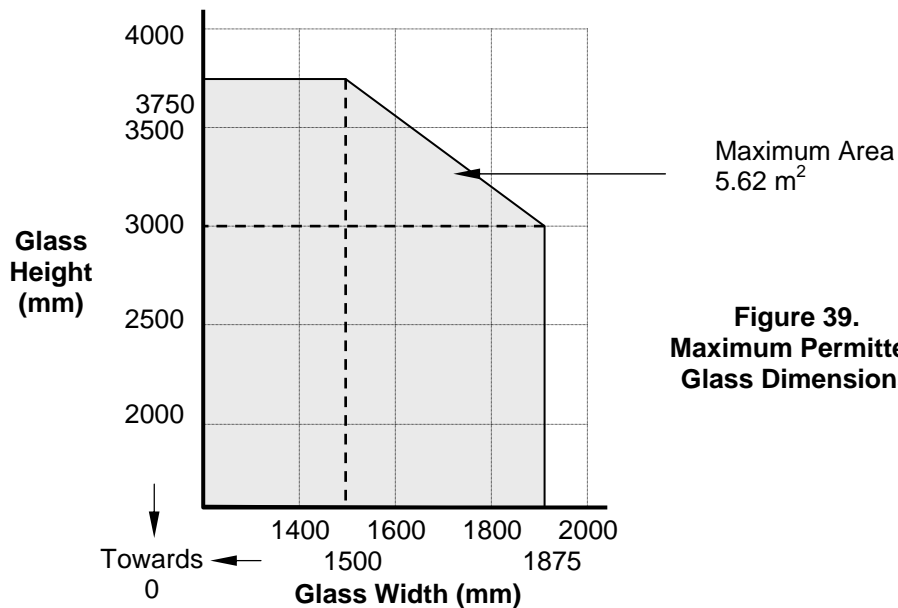


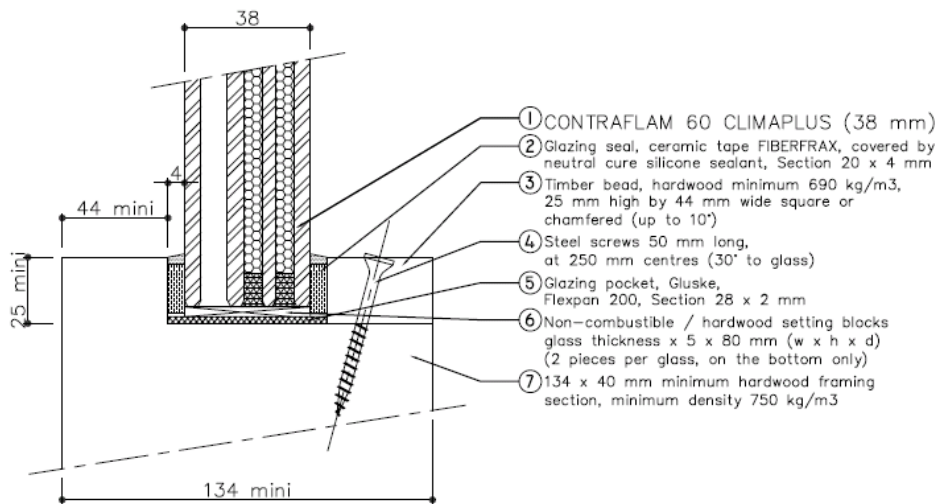
Figure 39.
Maximum Permitted
Glass Dimensions

CERTIFICATE No CF 811A
VETROTECH SAINT-GOBAIN INTERNATIONAL

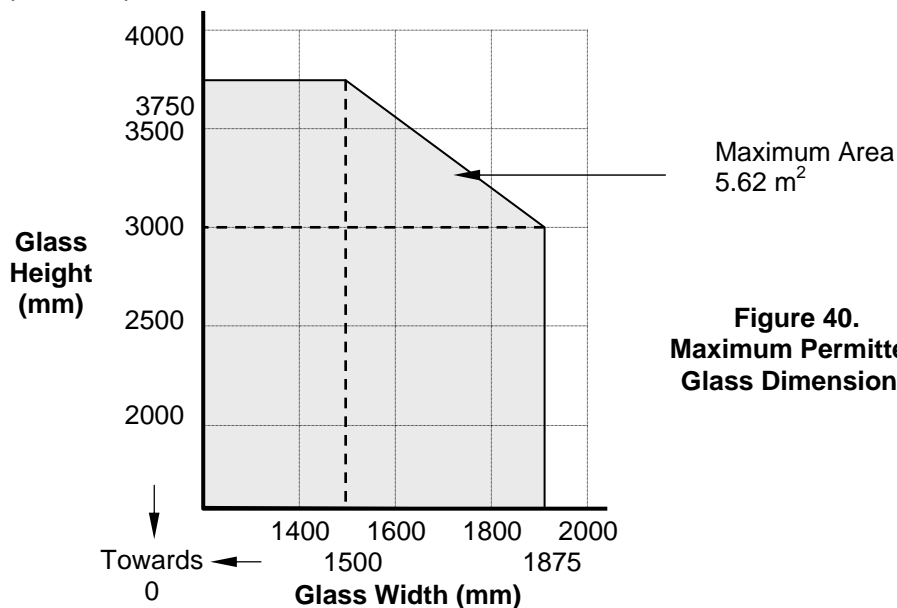
CONTRAFLAM FIRE RESISTING GLASS

Contraflam 60 Climaplus Glass in timber framed screens for periods of 60 minutes integrity and insulation

The glass shall be glazed utilising the following basic specification:



The screens shall be no greater than 4000 mm high unless suitable tie backs and/or fire protected structural supports are provided.

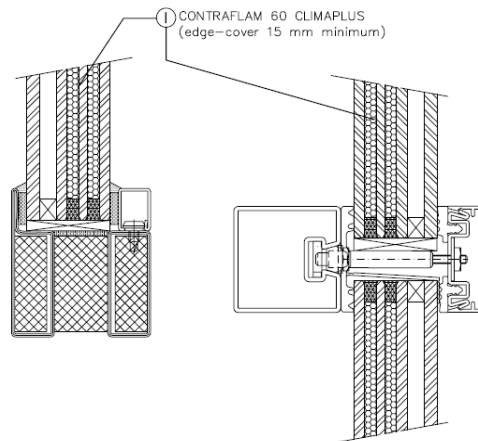


CERTIFICATE No CF 811A
VETROTECH SAINT-GOBAIN INTERNATIONAL

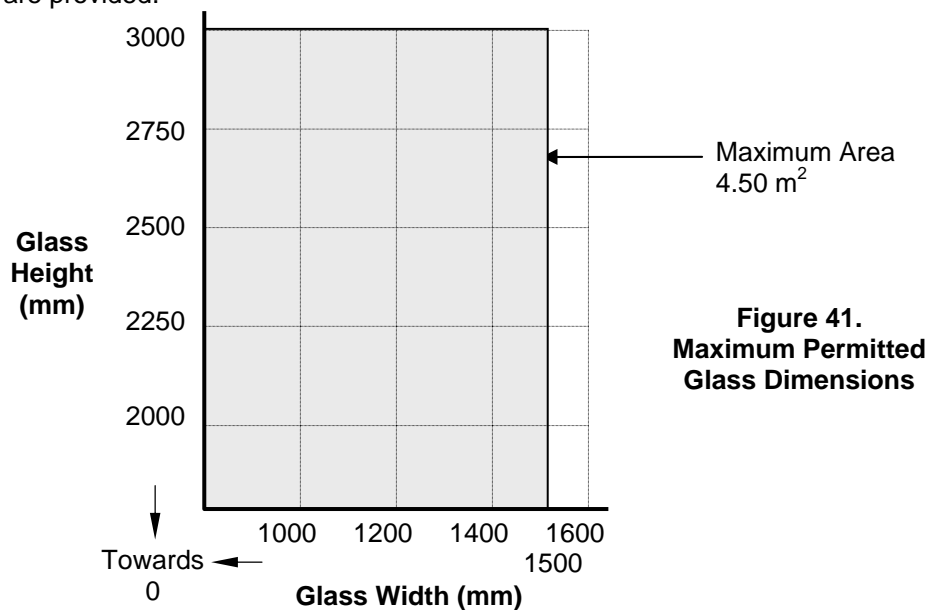
CONTRAFLAM FIRE RESISTING GLASS

Contraflam 60 Climaplus Glass in steel framed screens for periods of 120 minutes integrity and 60 minutes insulation

The glass shall be installed into a previously tested or CERTIFIRE approved framing system (which is covered appropriately by test or assessment evidence) using pressure plate glazing, screw-fixed or clip-on retaining beads, see examples below. The glass shall be glazed into the screen as described in the table below and set on non-combustible setting blocks to determine the correct edge cover.



The screens shall be no greater than 4000 mm high unless suitable tie backs and/or fire protected structural supports are provided.

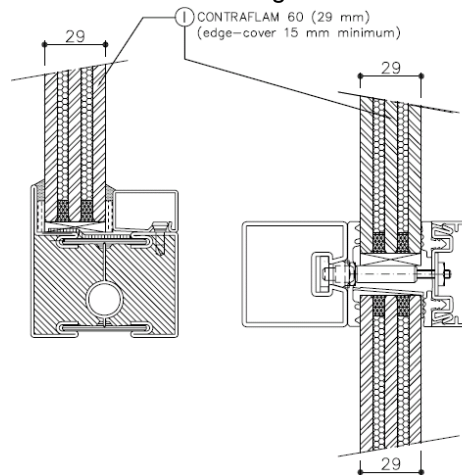


CERTIFICATE No CF 811A
VETROTECH SAINT-GOBAIN INTERNATIONAL

CONTRAFLAM FIRE RESISTING GLASS

Contraflam 60 Glass in steel framed screens for periods of 90 minutes integrity and 60 minutes insulation

The glass shall be installed into a previously tested or CERTIFIRE approved framing system (which is covered appropriately by test or assessment evidence) using pressure plate glazing, screw-fixed or clip-on retaining beads, see examples below. The glass shall be glazed into the screen as described in the table below and set on non-combustible setting blocks to determine the correct edge cover.



The screens shall be no greater than 4000 mm high unless suitable tie backs and/or fire protected structural supports are provided.

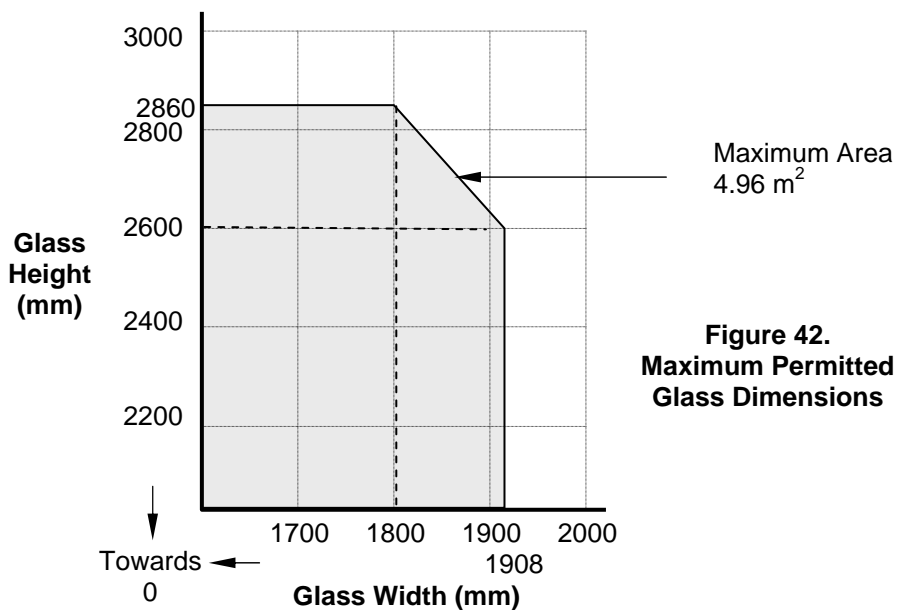


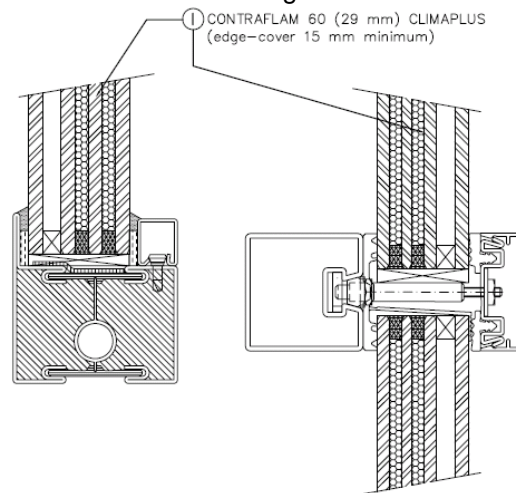
Figure 42.
Maximum Permitted
Glass Dimensions

CERTIFICATE No CF 811A
VETROTECH SAINT-GOBAIN INTERNATIONAL

CONTRAFLAM FIRE RESISTING GLASS

Contraflam 60 Climaplus Glass in steel framed screens for periods of 90 minutes integrity and 60 minutes insulation

The glass shall be installed into a previously tested or CERTIFIRE approved framing system (which is covered appropriately by test or assessment evidence) using pressure plate glazing, screw-fixed or clip-on retaining beads, see examples below. The glass shall be glazed into the screen as described in the table below and set on non-combustible setting blocks to determine the correct edge cover.



The screens shall be no greater than 4000 mm high unless suitable tie backs and/or fire protected structural supports are provided.

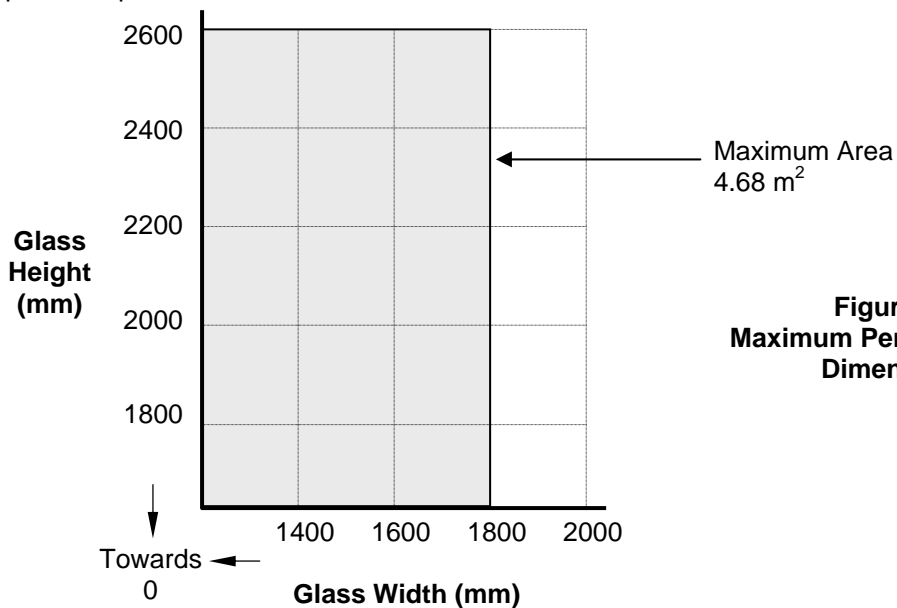


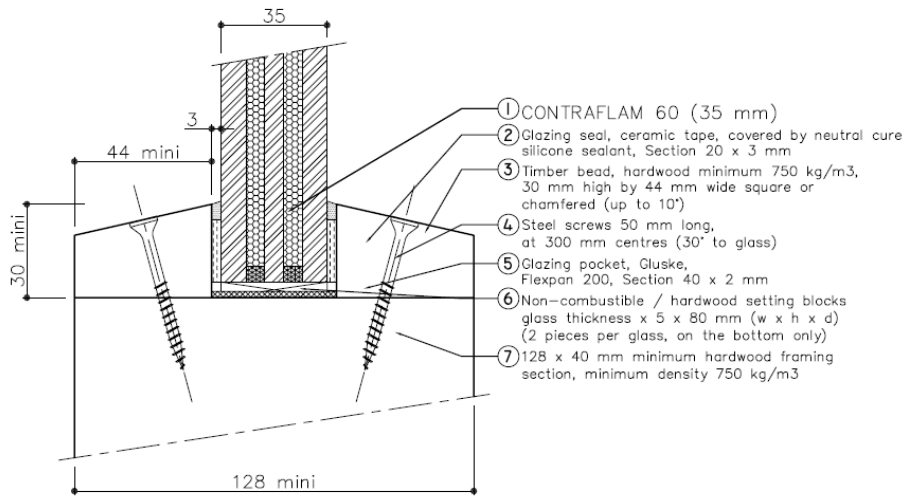
Figure 43.
Maximum Permitted Glass Dimensions

CERTIFICATE No CF 811A
VETROTECH SAINT-GOBAIN INTERNATIONAL

CONTRAFLAM FIRE RESISTING GLASS

Contraflam 60 Glass in timber framed screens for periods of 60 minutes integrity and insulation

The glass shall be glazed utilising the following basic specification:



The screens shall be no greater than 4000 mm high unless suitable tie backs and/or fire protected structural supports are provided.

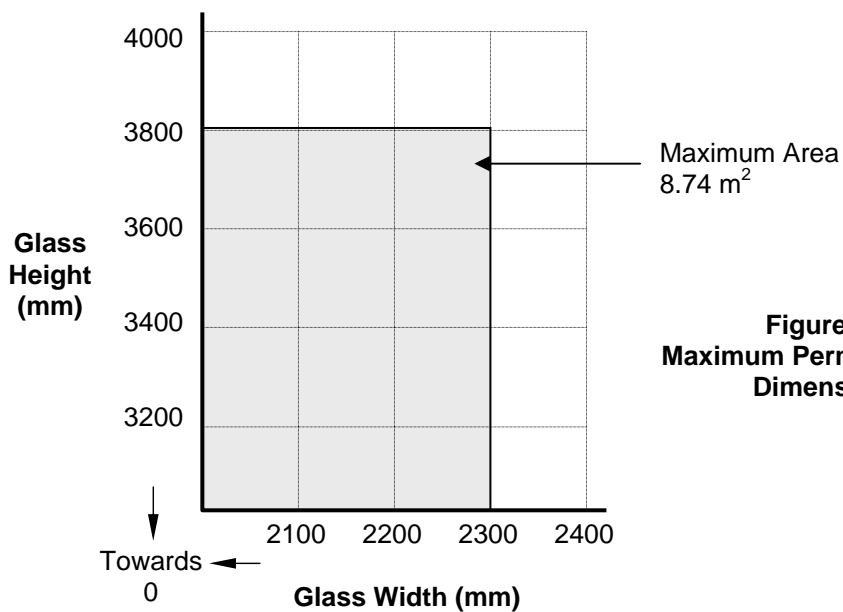


Figure 44.
Maximum Permitted Glass Dimensions

CERTIFICATE No CF 811A
VETROTECH SAINT-GOBAIN INTERNATIONAL

CONTRAFLAM FIRE RESISTING GLASS

Contraflam 60 Glass in loadbearing horizontal steel frames for periods of 60 minutes integrity and insulation

The glass comprising 10 panes made of 34 mm thick SGG Lite-Floor on the top level and a 32 mm thick Contraflam 60 on the bottom level, shall be installed into a previously tested or CERTIFIRE approved horizontal loadbearing framing system (which is covered appropriately by test or assessment evidence) using pressure plate glazing. The maximum permitted load is 400 kg/m² and minimum edge bearing is 25 mm to all edges and the glass must be clamped in place.

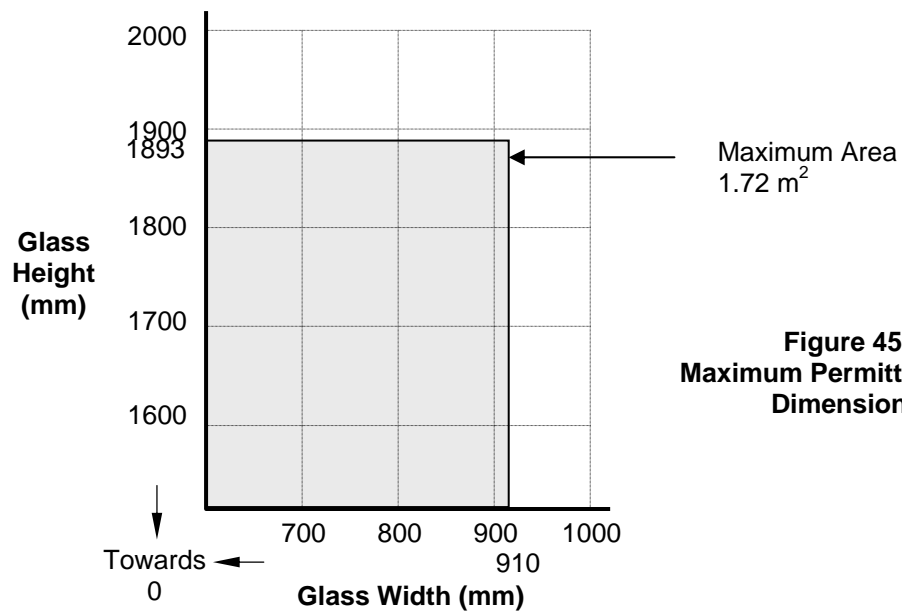
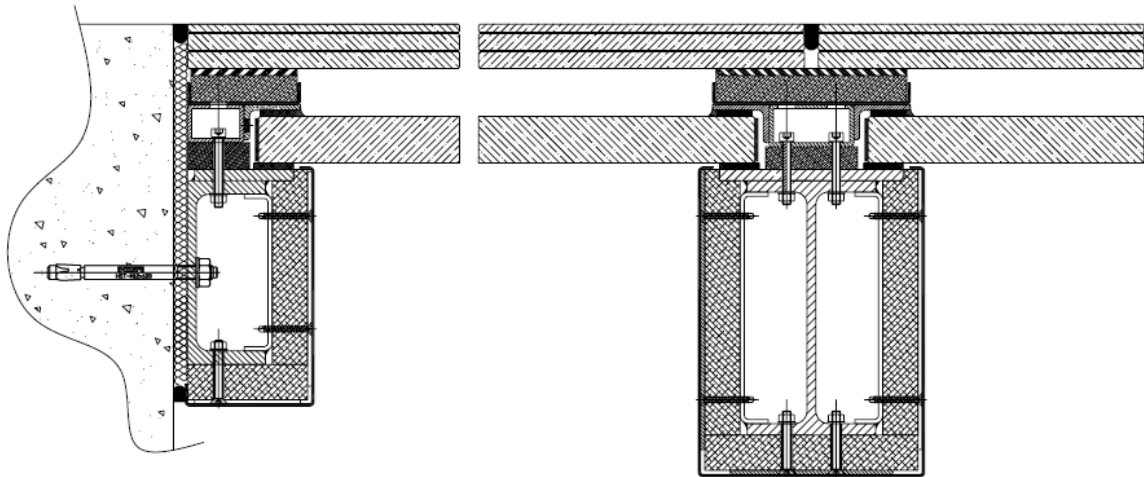


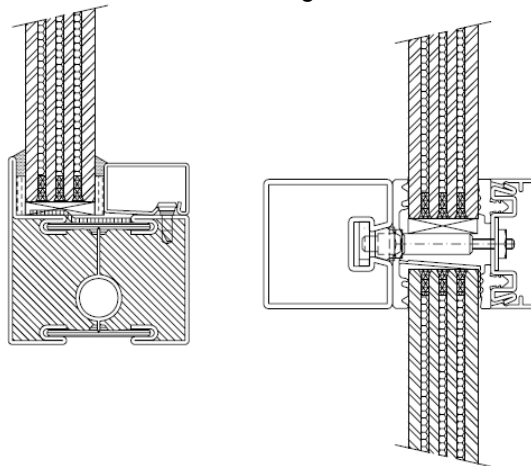
Figure 45.
Maximum Permitted Glass Dimensions

CERTIFICATE No CF 811A
VETROTECH SAINT-GOBAIN INTERNATIONAL

CONTRAFLAM FIRE RESISTING GLASS

Contraflam 60-3 Glass in steel framed screens for periods of 120 minutes integrity and 60 minutes insulation

The glass shall be installed into a previously tested or CERTIFIRE approved framing system (which is covered appropriately by test or assessment evidence) using pressure plate glazing, screw-fixed or clip-on retaining beads, see examples below. The glass shall be glazed into the screen as described in the table below and set on non-combustible setting blocks to determine the correct edge cover.



The screens shall be no greater than 4000 mm high unless suitable tie backs and/or fire protected structural supports are provided.

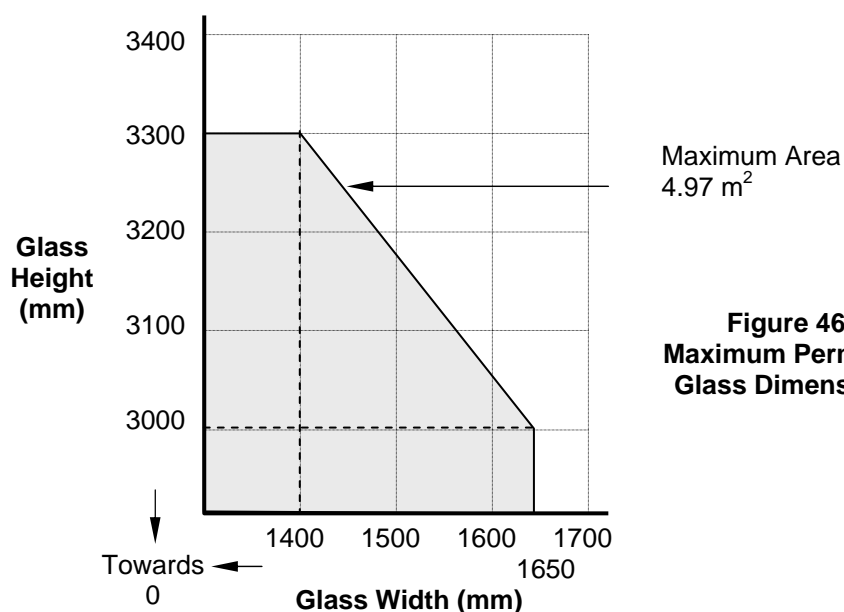
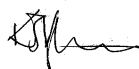


Figure 46.
Maximum Permitted
Glass Dimensions

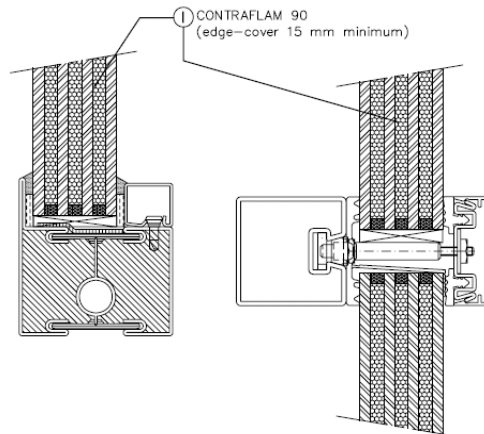


CERTIFICATE No CF 811A
VETROTECH SAINT-GOBAIN INTERNATIONAL

CONTRAFLAM FIRE RESISTING GLASS

Contraflam 90 Glass in steel framed screens for periods of 90 minutes integrity and insulation

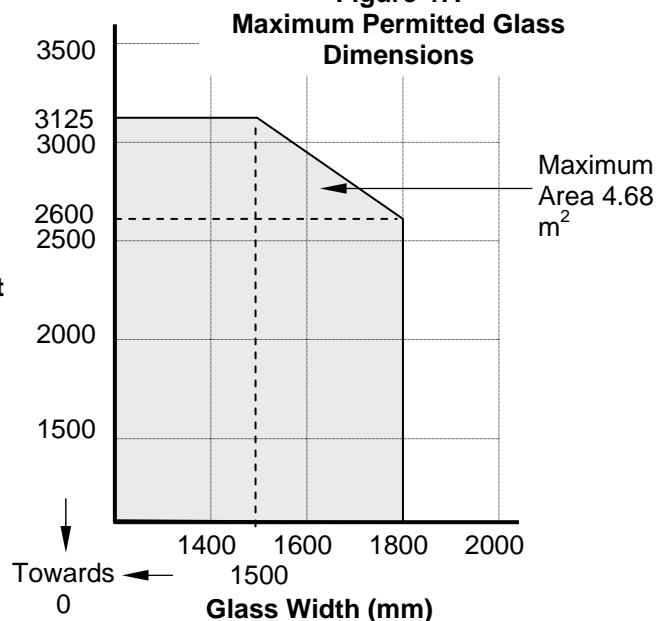
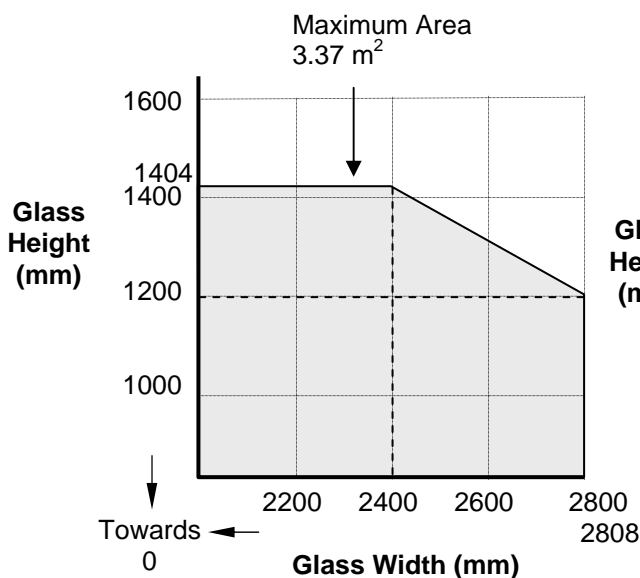
The glass shall be installed into a previously tested or CERTIFIRE approved framing system (which is covered appropriately by test or assessment evidence) using pressure plate glazing, screw-fixed or clip-on retaining beads, see examples below. The glass shall be glazed into the screen as described in the table below and set on non-combustible setting blocks to determine the correct edge cover.



The screens shall be no greater than 4000 mm high unless suitable tie backs and/or fire protected structural supports are provided.

Figure 47.

Maximum Permitted Glass Dimensions

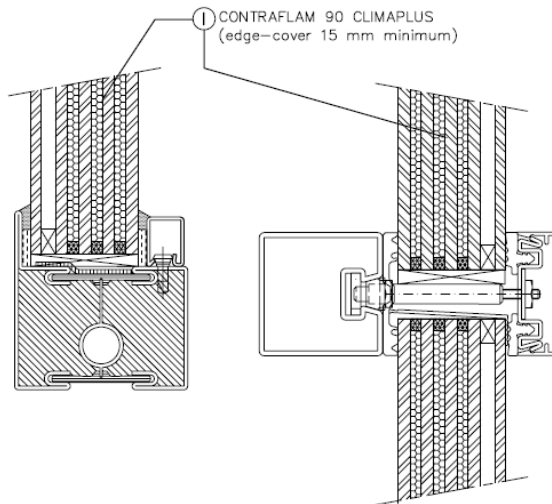



CERTIFICATE No CF 811A
VETROTECH SAINT-GOBAIN INTERNATIONAL

CONTRAFLAM FIRE RESISTING GLASS

Contraflam 90 Climaplus Glass in steel framed screens for periods of 90 minutes integrity and insulation

The glass shall be installed into a previously tested or CERTIFIRE approved framing system (which is covered appropriately by test or assessment evidence) using pressure plate glazing, screw-fixed or clip-on retaining beads, see examples below. The glass shall be glazed into the screen as described in the table below and set on non-combustible setting blocks to determine the correct edge cover.



The screens shall be no greater than 4000 mm high unless suitable tie backs and/or fire protected structural supports are provided.

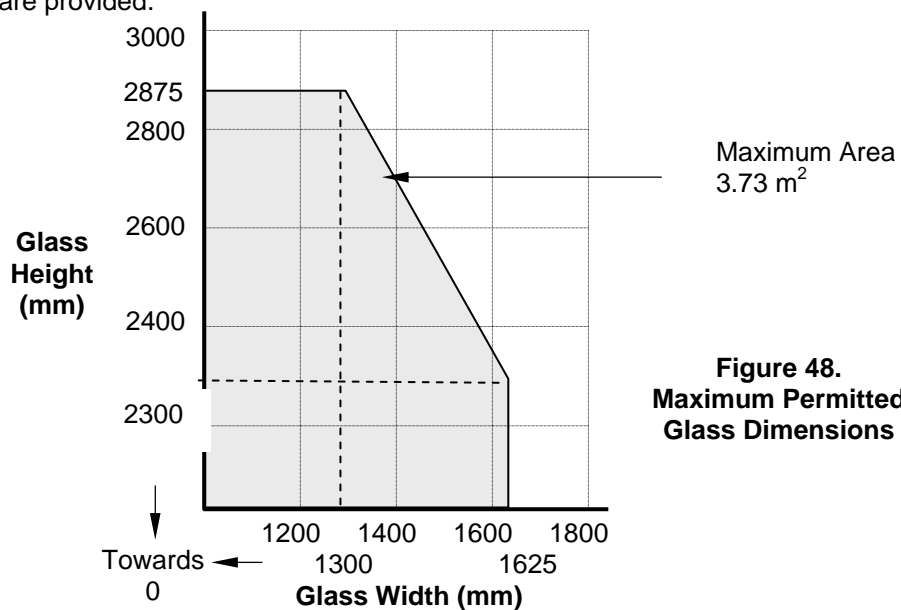


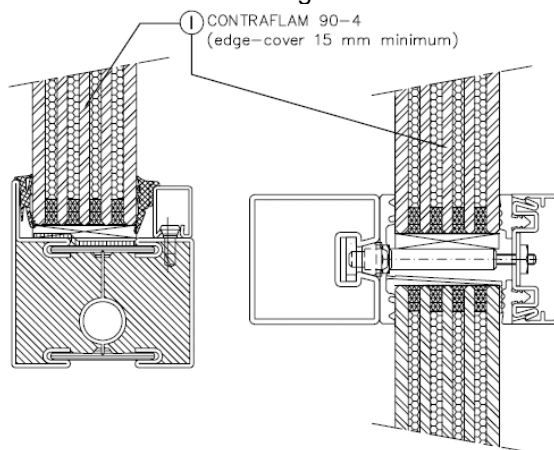
Figure 48.
Maximum Permitted Glass Dimensions

CERTIFICATE No CF 811A
VETROTECH SAINT-GOBAIN INTERNATIONAL

CONTRAFLAM FIRE RESISTING GLASS

Contraflam 90-4 Glass in steel framed screens for periods of 90 minutes integrity and insulation

The glass shall be installed into a previously tested or CERTIFIRE approved framing system (which is covered appropriately by test or assessment evidence) using pressure plate glazing, screw-fixed or clip-on retaining beads, see examples below. The glass shall be glazed into the screen as described in the table below and set on non-combustible setting blocks to determine the correct edge cover.



The screens shall be no greater than 4000 mm high unless suitable tie backs and/or fire protected structural supports are provided.

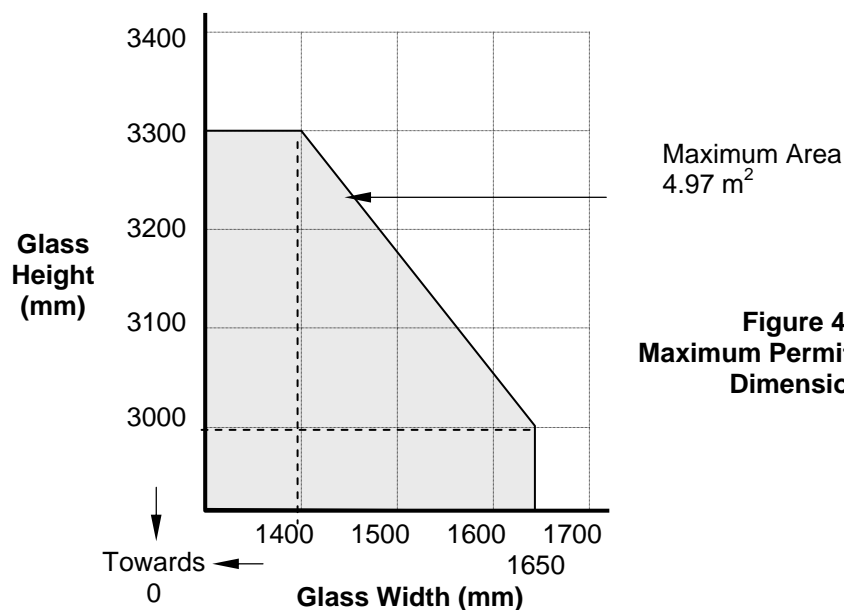


Figure 49.
Maximum Permitted Glass Dimensions

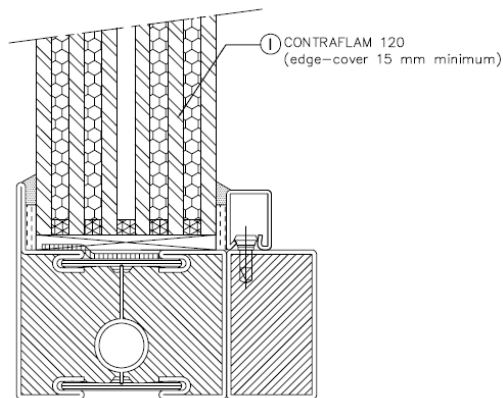


CERTIFICATE No CF 811A
VETROTECH SAINT-GOBAIN INTERNATIONAL

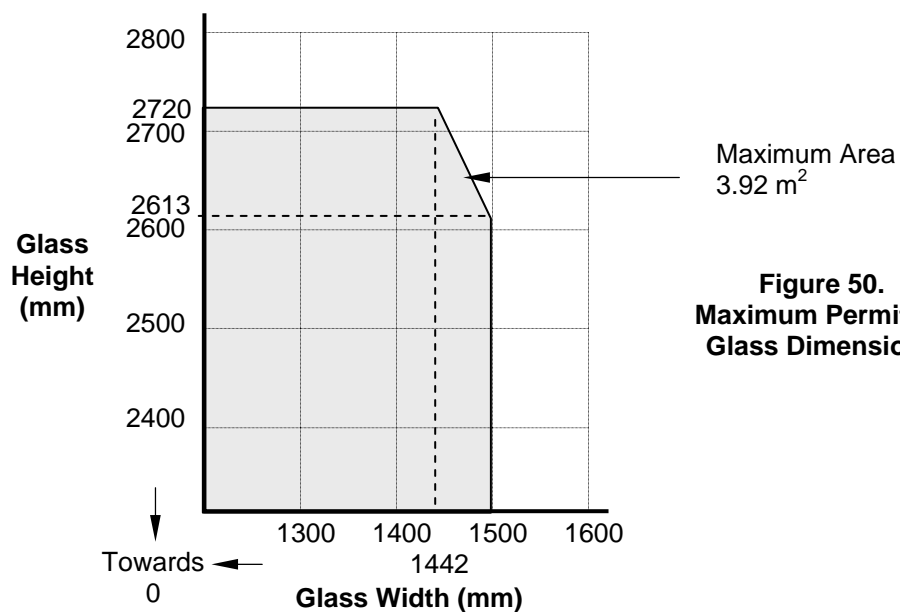
CONTRAFLAM FIRE RESISTING GLASS

Contraflam 120 Glass in steel framed screens for periods of 120 minutes integrity and insulation

The glass shall be installed into a previously tested or CERTIFIRE approved framing system (which is covered appropriately by test or assessment evidence) using pressure plate glazing, screw-fixed or clip-on retaining beads, see examples below. The glass shall be glazed into the screen as described in the table below and set on non-combustible setting blocks to determine the correct edge cover.



The screens shall be no greater than 4000 mm high unless suitable tie backs and/or fire protected structural supports are provided.

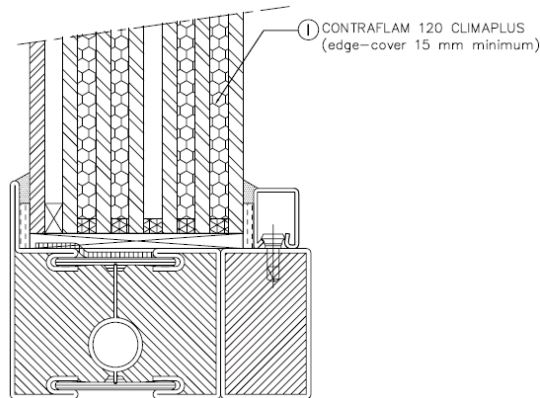


CERTIFICATE No CF 811A
VETROTECH SAINT-GOBAIN INTERNATIONAL

CONTRAFLAM FIRE RESISTING GLASS

Contraflam 120 Climaplus Glass in steel framed screens for periods of 120 minutes integrity and insulation

The glass shall be installed into a previously tested or CERTIFIRE approved framing system (which is covered appropriately by test or assessment evidence) using pressure plate glazing, screw-fixed or clip-on retaining beads, see examples below. The glass shall be glazed into the screen as described in the table below and set on non-combustible setting blocks to determine the correct edge cover.



The screens shall be no greater than 4000 mm high unless suitable tie backs and/or fire protected structural supports are provided.

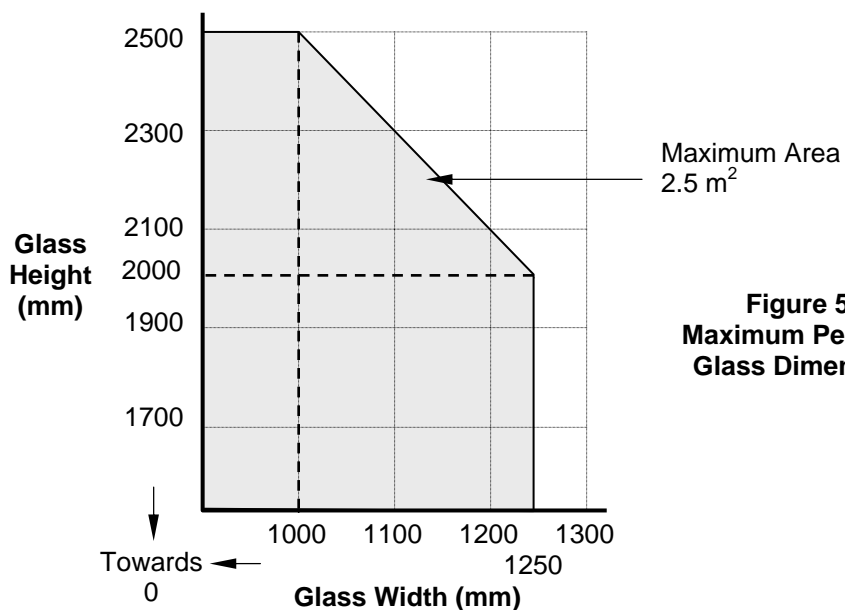
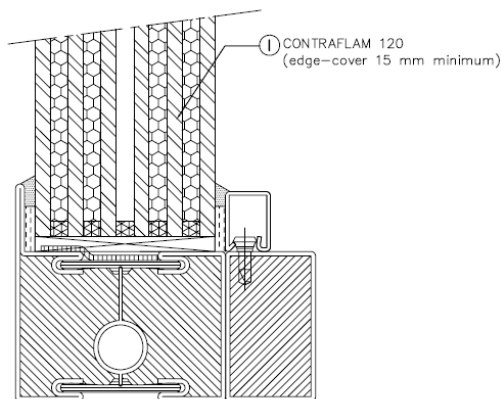


Figure 51.
Maximum Permitted
Glass Dimensions

CERTIFICATE No CF 811A
VETROTECH SAINT-GOBAIN INTERNATIONAL

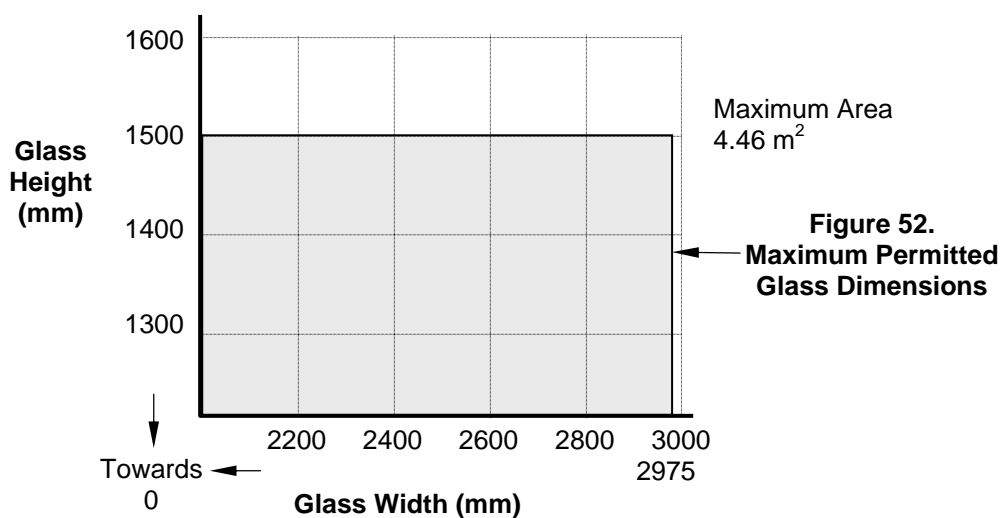
CONTRAFLAM FIRE RESISTING GLASS

Contraflam 120 Glass in steel framed screens for periods of 120 minutes integrity and insulation



The glass shall be installed into a previously tested or CERTIFIRE approved framing system (which is covered appropriately by test or assessment evidence) using pressure plate glazing, screw-fixed or clip-on retaining beads, see examples below. The glass shall be glazed into the screen as described in the table below and set on non-combustible setting blocks to determine the correct edge cover.

The screens shall be no greater than 4000 mm high unless suitable tie backs and/or fire protected structural supports are provided.

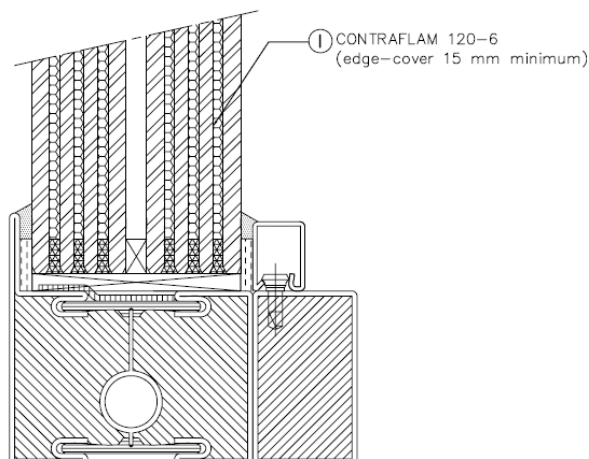


CERTIFICATE No CF 811A
VETROTECH SAINT-GOBAIN INTERNATIONAL

CONTRAFLAM FIRE RESISTING GLASS

Contraflam 120-6 Glass in steel framed screens for periods of 120 minutes integrity and insulation

The glass shall be installed into a previously tested or CERTIFIRE approved framing system (which is covered appropriately by test or assessment evidence) using pressure plate glazing, screw-fixed or clip-on retaining beads, see examples below. The glass shall be glazed into the screen as described in the table below and set on non-combustible setting blocks to determine the correct edge cover.



The screens shall be no greater than 4000 mm high unless suitable tie backs and/or fire protected structural supports are provided.

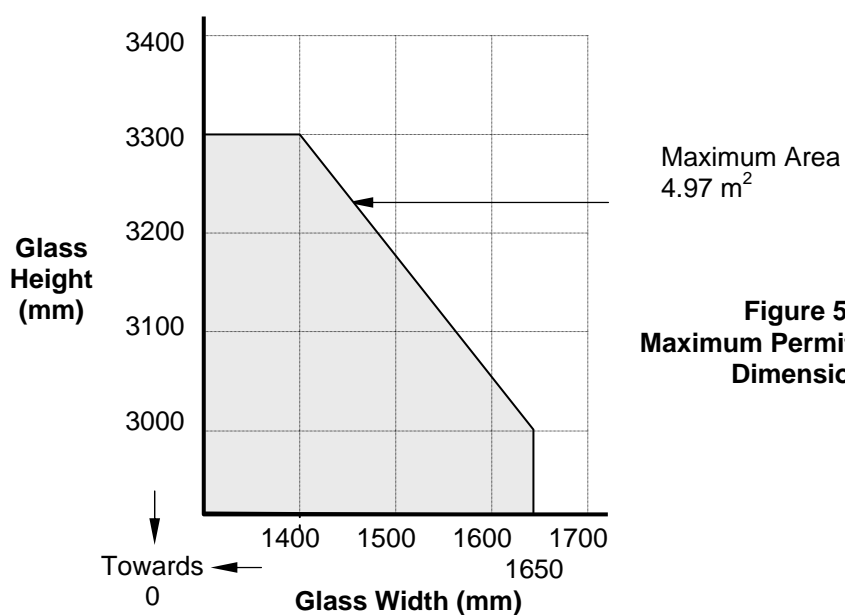


Figure 53.
Maximum Permitted Glass Dimensions