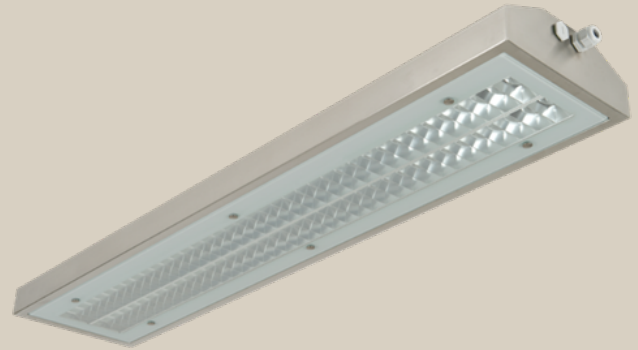


i35 | i35 LED

A versatile and tough IP65 luminaire



Glamox i35 is a surface mounted IP65 luminaire, specifically designed to meet strict requirements in the food industry. Proper material selection is critical for the product's lifetime therefore i35 is made of acid-proof steel that is a corrosion and chemical resistant material. The product is designed to withstand cleaning products and methods that meet the requirements in the fish processing industry and slaughterhouses. The choices of materials are also suitable for effective cleaning with acidic foam detergent.

i35 is available with front cover made of tempered glass, laminated tempered glass or impact resistant clear acrylic with silicone gaskets. The luminaire can be supplied with reflectors in silver coated aluminium with a selection of wide beam, medium beam or asymmetric reflector. Also available with SoftLight optic. A versatile product also for use in areas such as goods-in, production hall, storage and technical rooms.

i35 | i35 LED



i35 2x28W Medium Beam



i35 2x28W Wide Beam



i35 with tempered glass



i35 2x28W Asymmetric

TECHNICAL DESCRIPTION

LIGHT SOURCE

2 x T5 28, 54W
Supplied with or without light sources.

LED

BALLAST

Electronic ballast (HF), electronic ballast with increased lifetime (HFI), analogue dimming (HFDA), digital dimming (HFDd) or DALI.

BODY MATERIAL & COLOUR

Housing and front cover fixing bolts in acid-proof steel (**AISI 316**). Silicon gasket.

MOUNTING

Ceiling or wall, on luminaire tracks or on horizontal wire. Bracket for horizontal wire or revolvable bracket have to be ordered separately.

ACCESSORIES

Suspension kits

CONNECTION

5 pole 2,5 mm² push-in terminal block. 5 x 2,5 mm² through wiring.

OPTICS

Double parabolic Softlight optic (SL/SU). Wide beam (WB), medium beam (MB) and asymmetrical (ASY) reflector in silver coated aluminium. Front cover in tempered glass (TG) or laminated tempered glass (LTG) or impact resistant clear acrylic (CL).

INTEGRATED EMERGENCY LIGHT

Can be supplied with emergency lighting systems (Standard, Self Test or DALI addressable) with internal battery (Ta=25°).

HOUSING

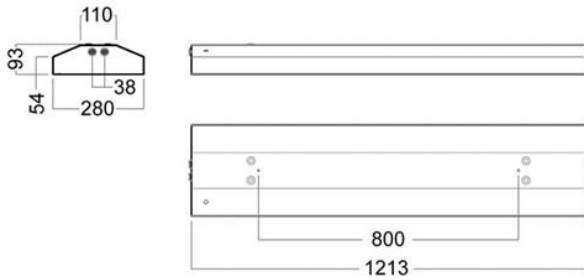
Equipped with a pressure equalisation filter to prevent the formation of condensation.

CABLE INLET

1-4 x cable glands. M20 polyamide (cable Ø7 - 14 mm).

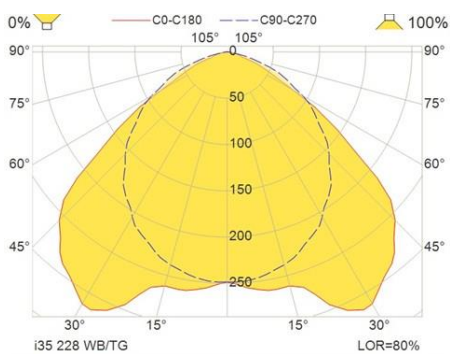
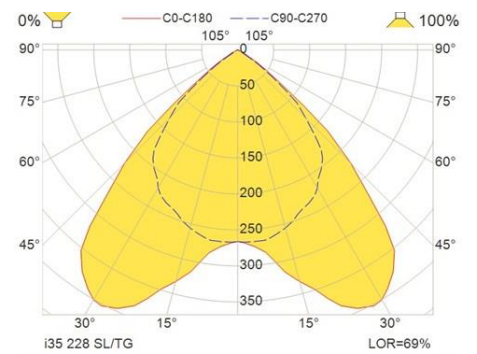
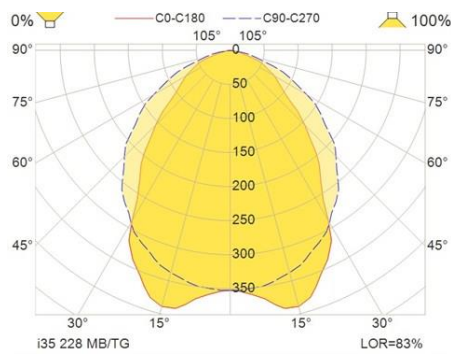
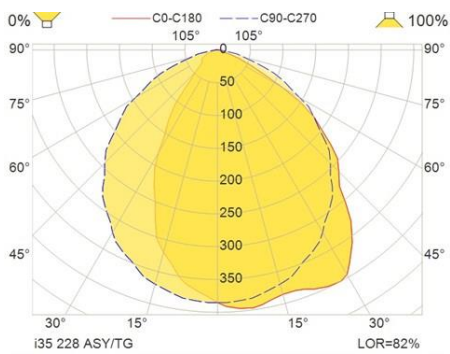
i35 | i35 LED

MEASUREMENT DRAWINGS



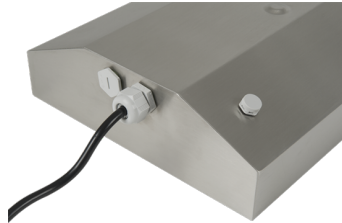
i35

LIGHT MEASUREMENT DRAWINGS



i35 | i35 LED

GALLERY



Membrane and air filter



Turnable bracket



For wire suspension

