

## C70-R

Pure LED experience.



The design of the pure LED product Glamox C70-R is recognized by the clean perception of the visible surface. There are minimum transitions from one material to another since the visible area is made in one piece. This creates a unique clean expression.

C70-R is designed to be installed in most of the standard ceiling types. Modular with visible or concealed profiles, solid ceiling up to 44mm thickness. Connection can be done without opening the diffuser, using Linect or standard push in connection terminals. Easy and with a minimum of time.

The diffuser on C70-R are fastened with 4 strong magnets and gives easy access to components and further easy maintenance.

Glamox C70-R is available with 3 lumen packages, 2 optics, integrated emergency, integrated sensor and with Linect as standard. This gives a unique flexibility for use in different applications.

The technology used in the light source, reflector and diffuser is designed with the sole purpose of utilize the many advantages of using LED as a light source. The luminaire can easily be connected without demounting the diffuser and without touching the light source. The new MReC™ technology gives so much light per consumed energy (lumen per watt) that it makes Glamox C70-R one of the most efficient on the marked for this type of luminaires. Glamox C70-R provides pure LED experience.

For mounting in solid ceilings or modular ceilings with concealed profiles, a set of 4 mounting brackets must be ordered separately

# C70-R



C70-R OP



C70-R MP

# C70-R

---

## TECHNICAL DESCRIPTION

---

---

### LIGHT SOURCE

---

LED  
Colour tolerance: MacAdams 3  
Colour rendering: CRI 80  
Lifetime: Min. 50.000h, L70, Max Ta  
For L-values for Ta=25, see data on item level

From 2200 to 4300 lumen out.

---

### BALLAST

---

Available with Electronic driver (HF) or DALI.

---

### BODY MATERIAL & COLOUR

---

White painted steel body and PMMA diffuser. Also available in Tpa rated material.

---

### MOUNTING

---

C70-R is designed to be installed in most of the standard ceiling types. Modular with visible or concealed profiles, solid ceiling up to 44mm thickness.

For mounting in solid ceilings or modular ceilings with concealed profiles, a set of 4 mounting brackets must be ordered separately.

---

### CONNECTION

---

Cable entry from top. Terminal block is available without removing the diffuser. 3 or 5 pole push-in terminal block. Linect connection is available as standard on all variants. Shuco plug are available through the Linect system by using a separate item-number for the cable and plug.

---

### OPTICS

---

Opal diffuser type OP  
Microprismatic diffuser type MP

---

### INTEGRATED EMERGENCY LIGHT

---

Available with integrated emergency with battery back-up.  
Available with standard, selftest or addressable system type DALI.

---

### INTEGRATED SENSORS

---

Available with integrated sensor for daylight and presence type D2-SEN. Sensor can also communicate with remote control.

---

### LOAD AND FUSES

---

Maximum quantities of Glamox C70-R LED on a fuse

#### HF

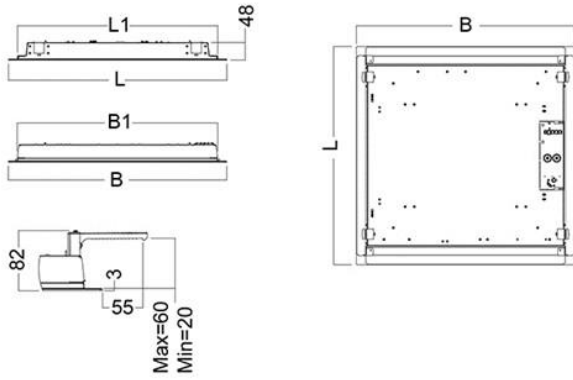
2200 - 3000lm: MCB 16A Type B: 60 pcs, 16A Type C: 80 pcs.  
4300lm: MCB 16A Type B: 32 pcs, 16A Type C: 40 pcs.

#### DALI

2200 - 3000lm: MCB 16A Type B: 13 pcs, 16A Type C: 18 pcs.  
4300lm: MCB 16A Type B: 13 pcs, 16A Type C: 18 pcs.

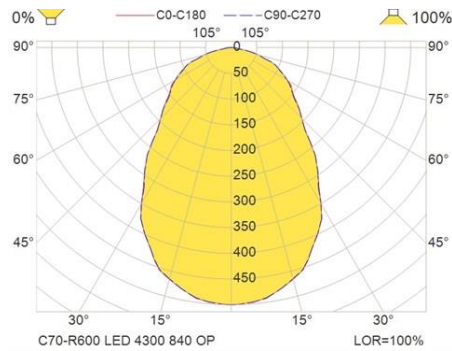
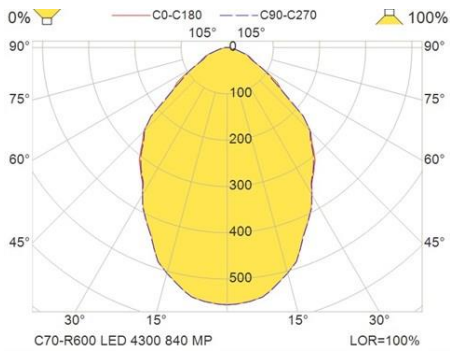
# C70-R

## MEASUREMENT DRAWINGS



Module	L (mm)	L1 (mm)	B (mm)	B1 (mm)	Cut out (mm)
600	597	548	597	548	560x560
625	622	573	622	573	585x585

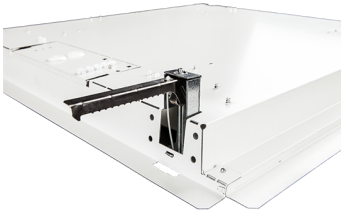
## LIGHT MEASUREMENT DRAWINGS



# C70-R

## GALLERY

---



Integrated sensor

