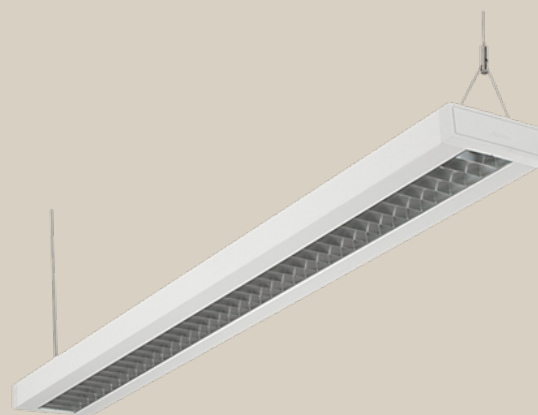
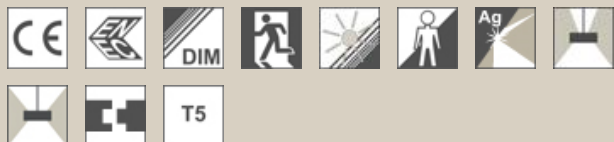


C10-P1

Easy, efficient family of luminaires displaying classic style



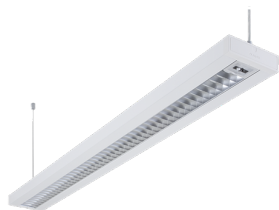
Suspended luminaire with uplight in a classic design. Can be delivered in white or silver-grey. Most options can be supplied with integrated LED emergency lighting (Standard, Self-Test or DALI addressable) or different types of integrated sensors.

Unique suspension system with simple, rapid adjustment wire in one end and the mains supply cable functioning as suspension at the opposite end. Can also be used in angled ceilings. Suspension included with luminaire (MNT) or can be ordered separately.

C10-P1



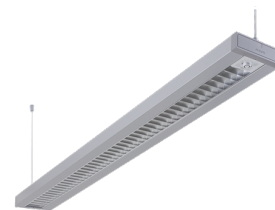
C10-P1 DL/DU



With integrated D-sensor



C10-P1 SL/SU



With integrated S-sensor



C10-P1 OP



C10-P1 DP

TECHNICAL DESCRIPTION

LIGHT SOURCE

1 x T5 28, 35, 49, 54, 80W
2 x T5 28, 35, 49, 54W.

Can be supplied with or without light source.

BALLAST

Electronic ballast (HF), analogue dimming (HFDA), digital dimming (HFDD) or DALI.

BODY MATERIAL & COLOUR

Steel body in pre-painted white or grey (RAL 9006).

MOUNTING

Unique suspension system with simple, quick adjustment wire in one end and the supply cable functioning as suspension at the opposite end. Can also be used in angled ceilings. Suspension is included with luminaire (MNT) or can be ordered separately. Can be row mounted by using a row mounting kit that must be ordered separately.

CONNECTION

When supplied with suspension a 3 or 5 wire cable or cable and plug is included but not connected. Connections at centre using a 3 or 5 pole push-in terminal block.

OPTICS

Double parabolic basic optic type **LL/LU**, a double parabolic high efficient Softlight optic type **SL/SU** and a double parabolic high gloss Darklight optic type **DL/DU**.

INTEGRATED EMERGENCY LIGHT

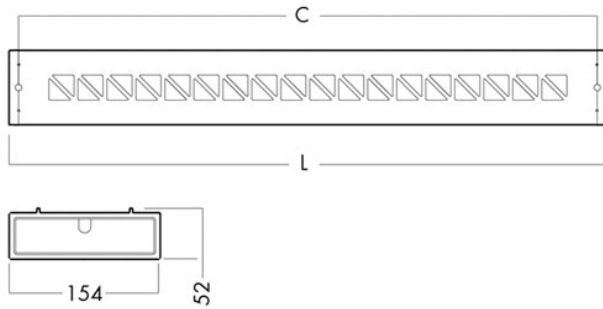
LED emergency light type standard (S), Selftest (ST) and addressable DALI (DALI).

INTEGRATED SENSORS

Stand-alone presence sensor type S-SEN, master / slave presence sensor with corridor function type M-SEN and a combination of presence and daylight sensor type D-SEN.

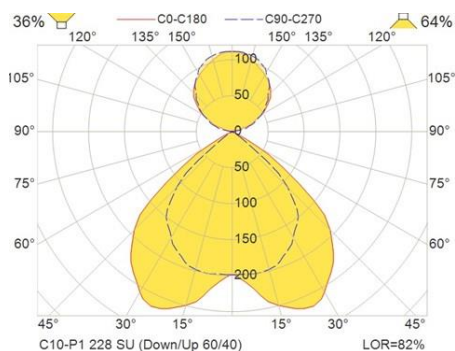
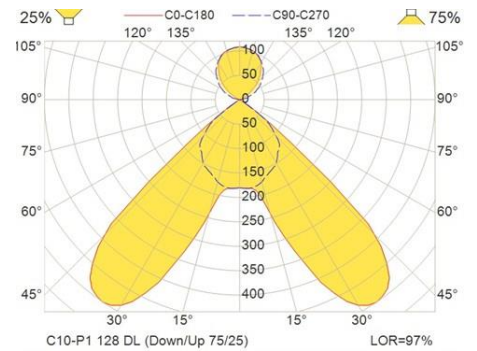
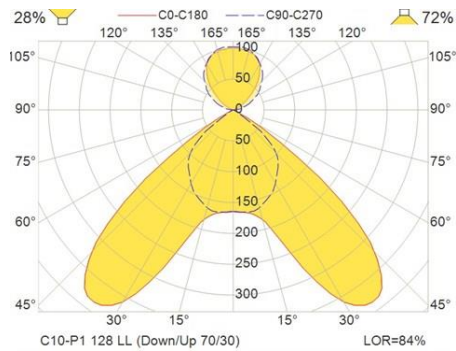
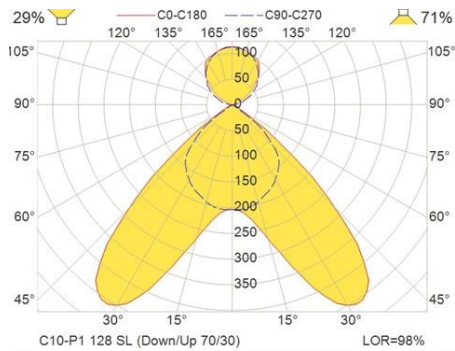
C10-P1

MEASUREMENT DRAWINGS



Wattage	L (mm)	C (mm)
28 / 54 W	1237	1200
35 / 49 / 80 W	1537	1500

LIGHT MEASUREMENT DRAWINGS

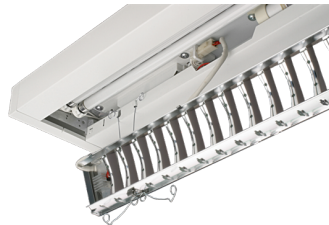


C10-P1

GALLERY



Uplight



Integrated LED emergency



C10-P1 Sensor



C10-P1 office