

CI/SfB

(11.5) (52.5)

Common Arrangement R12

Uniclass

L13/L1413/L14143/L212331



**Formpave<sup>®</sup>**

Geosynthetic Accessories  
for Aquaflow Permeable  
Paving Systems

**Formpave**

  
**Hanson**  
HEIDELBERGCEMENT Group



**Geosynthetics**

# Formpave<sup>®</sup>

Permeable Paving Systems



Geosynthetics Limited has joined forces with Formpave<sup>®</sup> Limited to distribute the geosynthetic products used in the Aquaflow<sup>®</sup> permeable paving system.



As one of the major distributors of geosynthetic materials in the UK, Geosynthetics Limited were chosen for our years of experience in this market and our ability to deliver anywhere in the UK within 24 hours.

Formpave<sup>®</sup> Limited were amongst the early pioneers of Sustainable Urban Drainage Systems (SUDS) and have extensively developed their systems over a number of years.

Geosynthetics Limited and Formpave<sup>®</sup> Limited share many common values including exceptionally high levels of customer service. In addition Geosynthetics Limited have always been committed to maintaining high stock levels to facilitate the next day delivery service. This partnership will improve product availability in terms of physical stock on the ground and the number of customers able to purchase Formpave products.

Geosynthetic materials are intrinsic to the sub-base design of both the infiltration and attenuation system. Formpave<sup>®</sup> Limited only recommend their approved products and their designs are covered by patents and patent applications in Great Britain and other countries.

## Geosynthetics Limited have been nominated as distributors of;

- Inbitex
- SC Intergrid
- SC Membrane
- SC Tape
- Tophats
- Formtex
- Formpave Distribution Tank
- Fin Drain
- Fin Drain Outlet

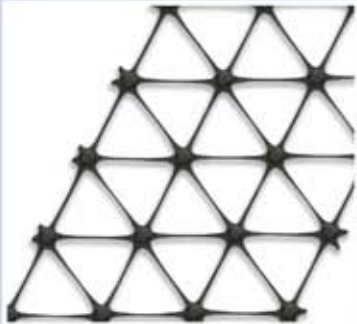
# Product range



Inbitex

## Inbitex

Inbitex has been specifically developed to optimise the cleansing of water entering the system. Various characteristics have been combined to create the unique geotextile that aids the development of the naturally occurring microbes and offers them refuge during periods of drought. These microbes then digest hydrocarbons within the sub-base.

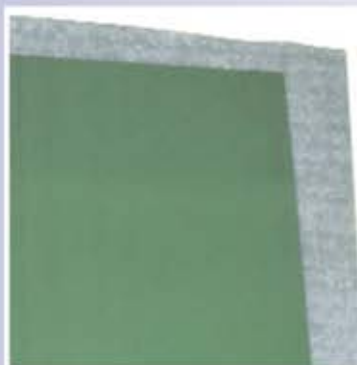


SC Intergrid

## SC Intergrid

The unique structure of the SC intergrid incorporates several characteristics which out-perform conventional biaxial geogrids in traffic applications.

Load distribution is 3-dimensional in nature and acts radially at all levels in the aggregate. For a stabilised layer to be effective it must have the ability to distribute load through 360 degrees.



SC Membrane with Formtex protection fleece.

## SC Membrane

Aquaflow SC membrane provides an impermeable layer ensuring attenuation of stormwater. It restricts water from entering the subgrade and ensures the structural integrity of the formation.

For watertight situations Geothermal/Water Harvesting a heavier welded membrane will be needed, for further details email [sales@geosyn.co.uk](mailto:sales@geosyn.co.uk).

Aquaflow SC Membrane is a UK manufactured co-polymer thermoplastic membrane. The product is coloured green, 500 microns thick (2000 gauge) and supplied in rolls 4m x 12.5m

**Geosynthetics Ltd** is a leading distributor

**Please call**  
**01455 617 139**

or email [sales@geosyn.co.uk](mailto:sales@geosyn.co.uk)  
for further information.

Wide  
product  
range

Large  
stock  
holding

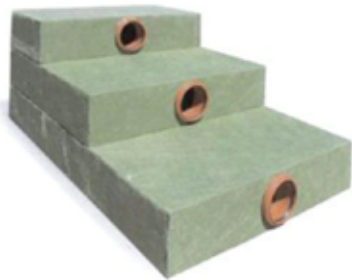
Next day  
delivery



SC Jointing Tape

## SC Tape

SC Jointing Tape has been specifically designed and tested for use with underground stormwater storage systems. It is used to form a permanent watertight seal between two pieces of SC Membrane. Manufactured from inert materials SC Jointing Tape does not set or cure after placement in the joint.



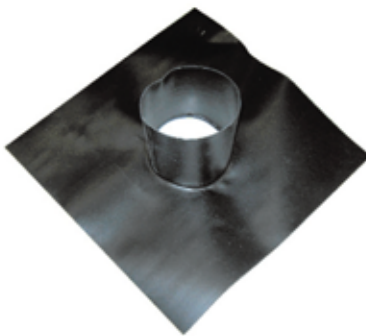
Formpave Distribution

## Formtex

When ground conditions are poor we recommend Formtex, a thick, tough geotextile, to protect SC Membrane from puncture.

## Formpave® Distribution Tank

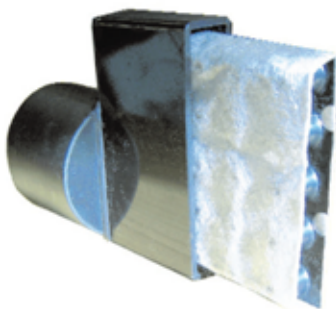
Where roof water is being discharged into the Formpave® system the distribution tank enables efficient dispersal of the water throughout the sub-base. During periods of high rainfall there is a potential for the drainage system to back-up. The Formpave distribution tank prevents this by providing a free space within the system where the water can collect as it disperses.



Top Hat

## Top Hats

Top Hats provide the outlet connections to the Formpave® system. Made from the same material as SC Membrane they are simple to attach and a watertight seal is easily made. The Top Hat incorporates a small pipe sleeve to which the outlet drainage is easily connected.



Fin Drain and Outlet

## Fin Drain & Outlet

The Fin Drain has a minimum permeable surface of 75%. This allows rapid removal of water through all faces and the clog resistance of the geotextile ensures that the system remains silt free. Fin drain has crushing strengths in excess of 600kN/m and is manufactured from polymers resistant to degradation by common chemicals, acids, alkalis and bacteria.

ator of geosynthetic materials in the UK

Design  
service

Onsite  
support

See all products  
online at  
**geosyn.co.uk**



**Geosynthetics**



# Quality assurance and service

## Formpave Assurance

Specifiers, engineers and contractors have the assurance of knowing that all the products specified in the Formpave®, Aquaflow® permeable paving system have been tested and approved by Formpave®.

## Certified Quality

All of the products are manufactured under a quality management system which is certified in accordance with the most comprehensive standards set by the International Organisation for Standardisation; namely ISO 9001:2008.

## Geosynthetics Limited Service Commitment

Geosynthetics Limited is committed to offering the most comprehensive range of geosynthetic products from stock. Fast delivery is our speciality. We are committed to offering a next day delivery service and proud of our customer service record.



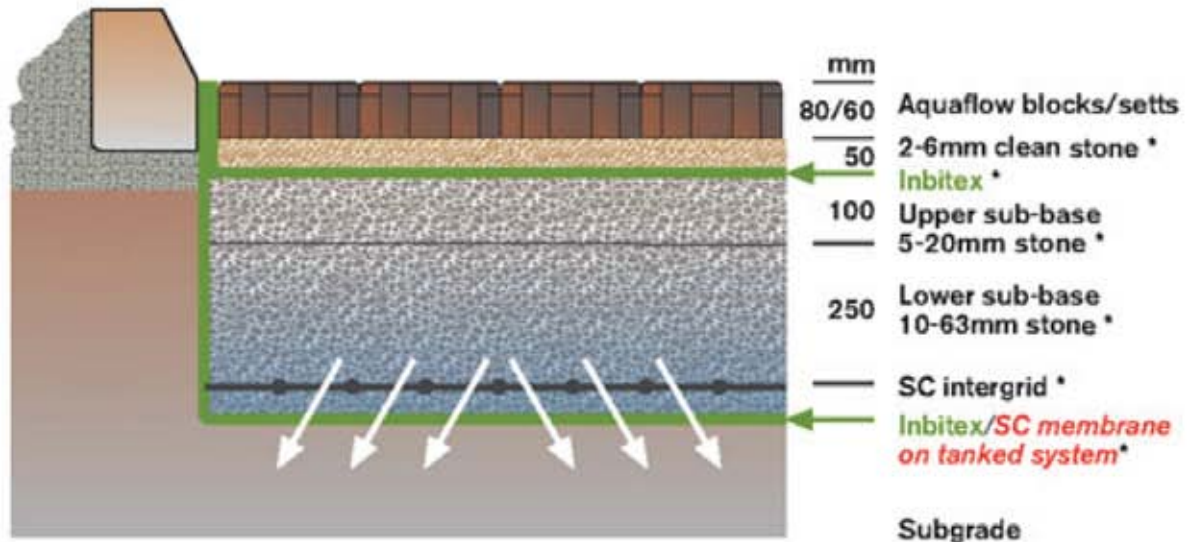
**Geosynthetics Ltd is committed to offering the best solutions for soil stabilisation, erosion control, drainage and environmental protection problems.**

Well trained staff are always available to discuss which materials are best suited to any particular applications.

# Technical specification



**Typical system with a sub-grade CBR of between 2-5%**  
Parking areas subject to trafficking by cars and vans only



This brochure is produced to give an example of the products we supply and how, subject to your own testing, our products may be used. Nothing in this brochure shall be construed so as to give any warranty as to the fitness for purpose of any of our products in respect of any specific job. You should satisfy yourself through your own testing as to the suitability of our products for any specific purpose and rely solely on such testing and/or the advice of any professional(s) you commission. While we ensure as far as is possible that all information given in this brochure is accurate at the time of print, information and examples given in this brochure are by way of illustration only and nothing contained in this or any other promotional literature produced by us shall in any way constitute any offer or contract with you or shall be relied upon by you as a statement or representation of fact.

**Please call - 01455 617 139**

or email [sales@geosyn.co.uk](mailto:sales@geosyn.co.uk) for more technical advice and further information.

## Geosynthetics Limited

Fleming Road, Harrowbrook Industrial Estate  
Hinckley, Leicestershire LE10 3DU  
Fax: 01455 617 140  
Email: [sales@geosyn.co.uk](mailto:sales@geosyn.co.uk)



**Geosynthetics**