

HADLEY SECTIONS & PROFILES



HADLEY
GROUP

SECTIONS & PROFILES

UltraBAR™ ADAPTABLE RAILING SYSTEM

USAGE:

- Parks & Amenities
- Housing Schemes
- Nurseries & Schools
- Railways

ADVANTAGES:

- Ease of Erection
- Low Maintenance
- Self Raking
- Unlimited Entrapment Prevention
- Play Safe Compliant to EN1176
- Aesthetically pleasing

ACCREDITATIONS:



The MANUFACTURING
EXCELLENCE Awards

Business in the

Community



SECURITY FENCING
DATASP01F

System

UltraBAR™ ADAPTABLE RAILING SYSTEM

Products shown within this publication are the subject of patent, design and other intellectual property rights.

Through cold roll forming technology, we have developed our raking joint system. Both secure and flexible UltraBAR™ will give the installer the desired angle.

The UltraBAR™ system is the lightest and most adaptable system available today. UltraBAR™ has been developed for ease of erection, being supplied in pre-assembled panels that simply bolt into place.

30° of rake for vertical bar application. Allowing railings to be installed in the most awkward areas without the need for stepping.

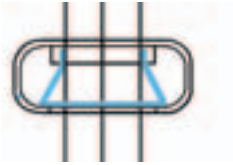
20° of rake for the bow top applications.

Construction

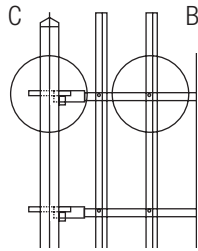
TYPICAL CONSTRUCTION METHODS FOR UltraBAR™ STANDARD UPRIGHTS, BOW & PLAYGROUND

TECHNICAL SPECIFICATION SHEET AVAILABLE UPON REQUEST. DETAILS ARE SUBJECT TO CHANGE WITHOUT PRIOR NOTIFICATION

A

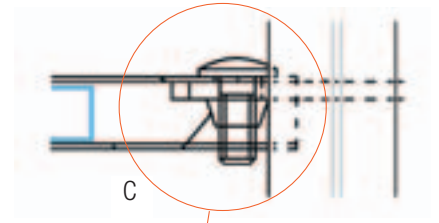


A. END DETAIL OF JOINT SYSTEM

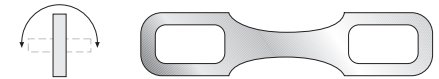


B

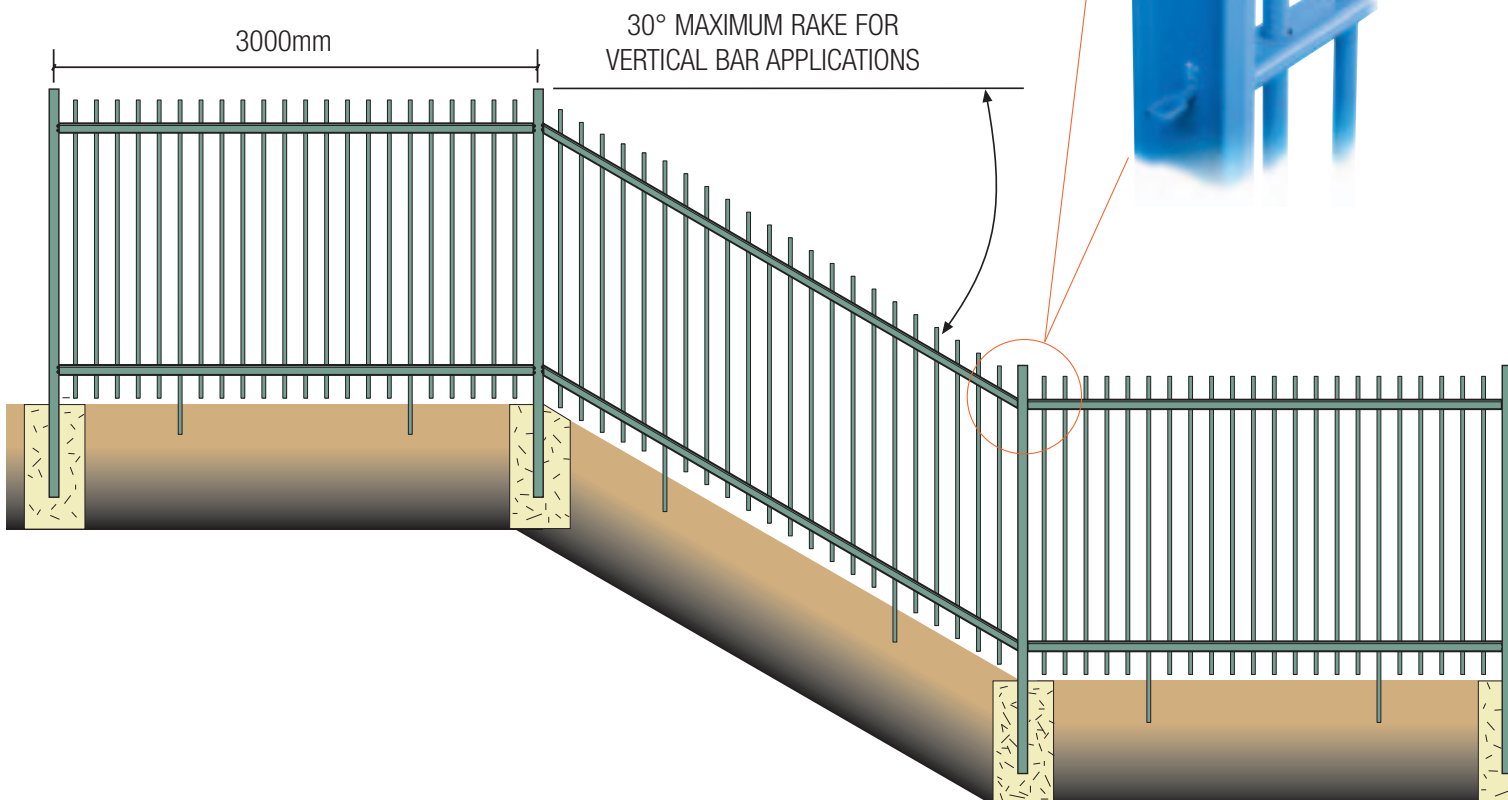
B. UltraBAR™ JOINT SYSTEM IS SECURE AND PROTECTED FROM VANDALISM BY INNER AND OUTER RAILS



C



C. FISH PLATE/POST CONNECTION



3000mm

30° MAXIMUM RAKE FOR VERTICAL BAR APPLICATIONS

Specifications

STANDARD BAY WIDTH OF 3000mm REDUCES INSTALLATION TIME AND NUMBER OF POSTS OVER LARGER PROJECTS

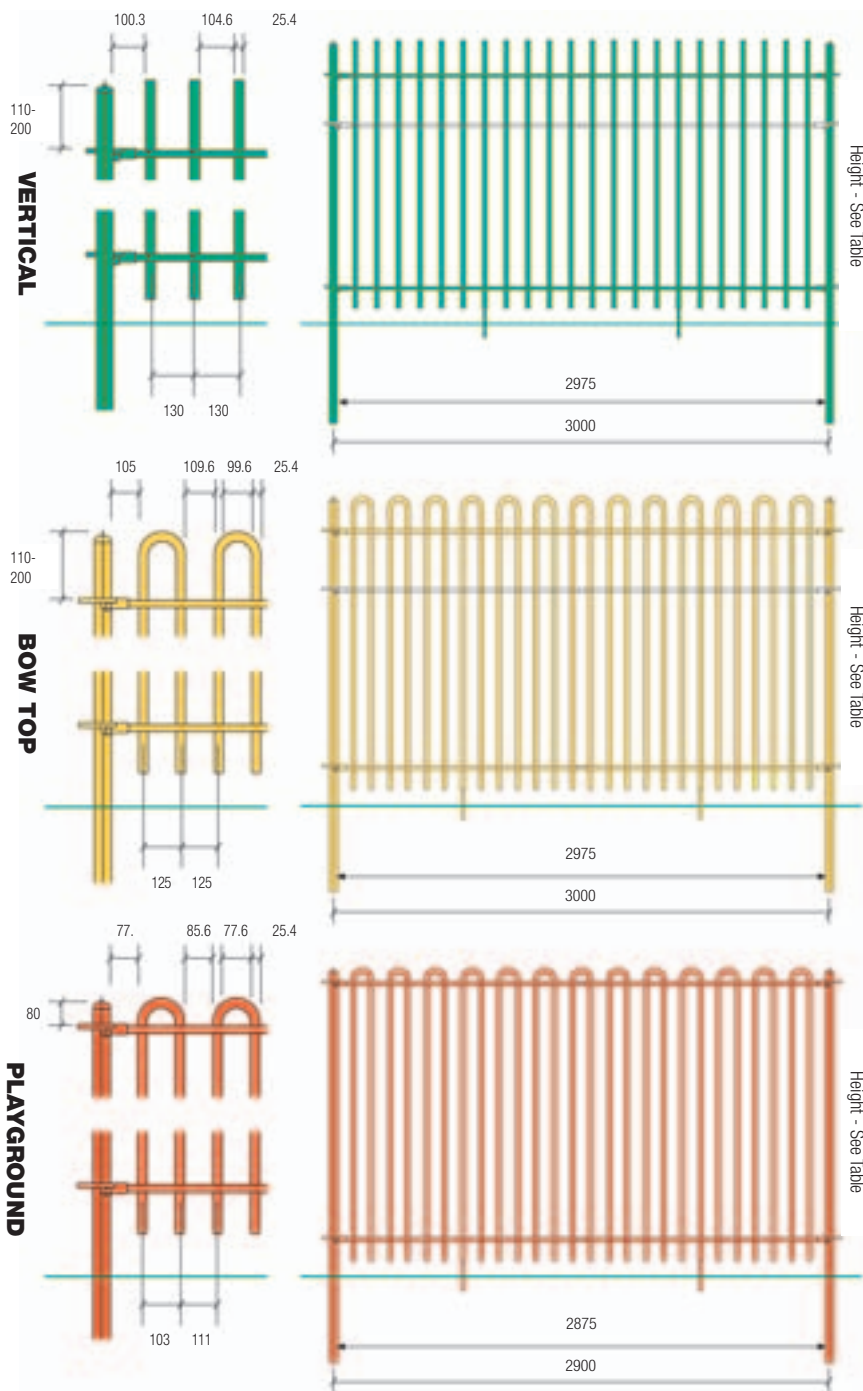
THIRD RAIL

A third rail is also standard on Vertical and Bow Top systems 2.4m high.

COLOUR

Railings of all sizes and configurations can be produced galvanised to BS EN ISO 1461: 1999 and polyester powder coated to any colour, special order.

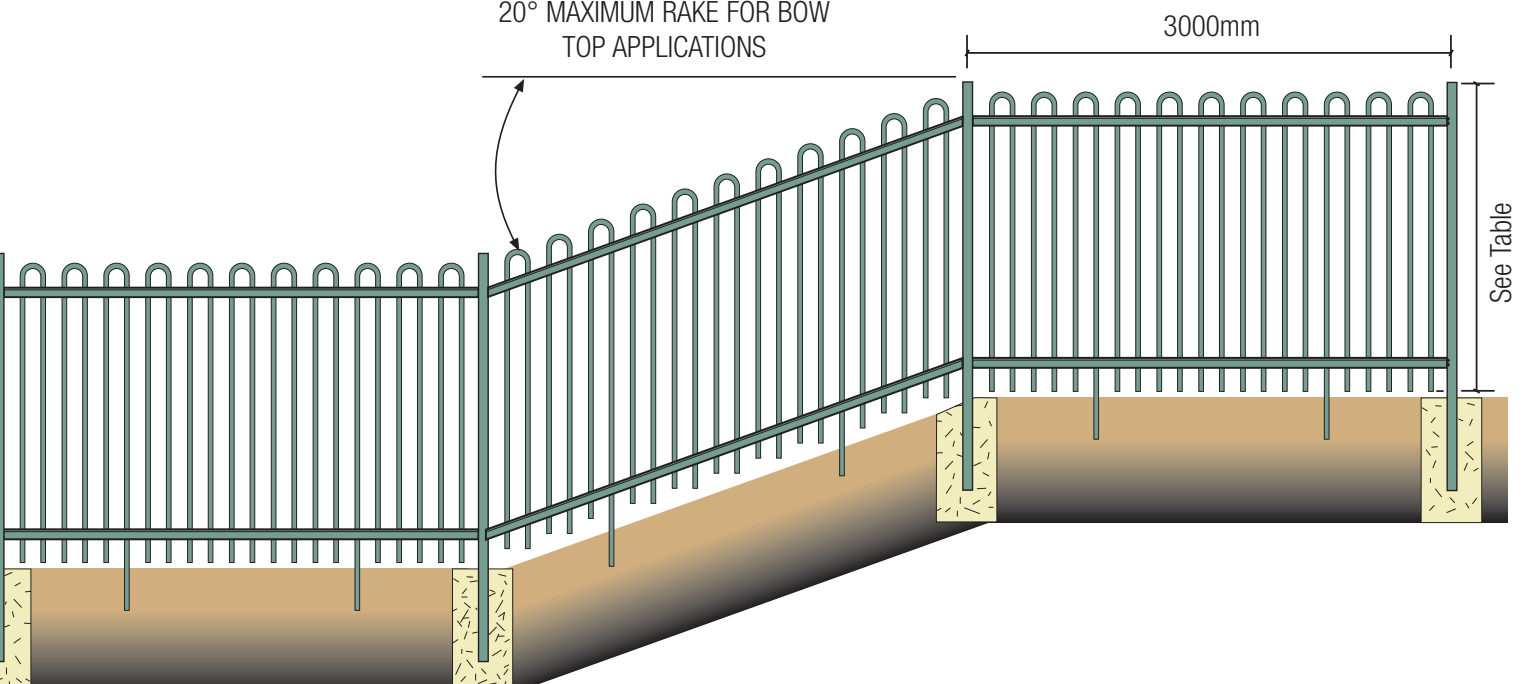
A range of standard gates (see overleaf) and panels are available from stock. Powder coated to RAL 9005-Black and RAL 6005-Green.



VERTICAL, BOW TOP AND PLAYGROUND STANDARD HEIGHTS TABLE

	Playground	Bow-Top	Vertical Bar
900mm	✓	✗	✗
1000mm	✓	✓	✓
1200mm	✓	✓	✓
1500mm	✓	✓	✓
1800mm	✓	✓	✓
2000mm	✗	✓	✓
2100mm	✗	✓	✓
2400mm with 3rd rail	✗	✓	✓

20° MAXIMUM RAKE FOR BOW TOP TOP APPLICATIONS



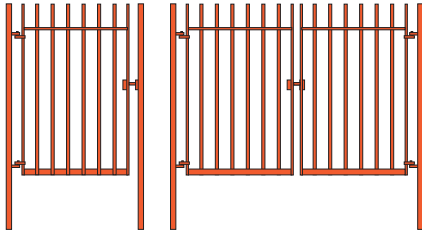
Gates TO COMPLEMENT OUR **UltraBAR™** FENCING SYSTEMS

All gates are fully designed and manufactured in-house. This facility ensures that we have the ability to supply a full range of gates to meet your requirements.

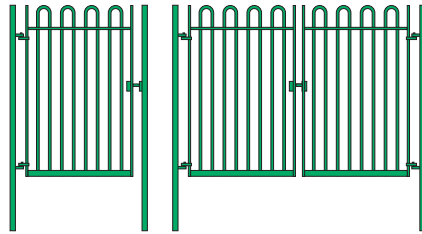
Gates of all sizes and configurations can be produced galvanised to BS EN ISO 1461: 1999 and polyester powder coated to any colour.

A range of standard gates and panels are available from stock. Powder coated to RAL 9005-Black and RAL 6005-Green.

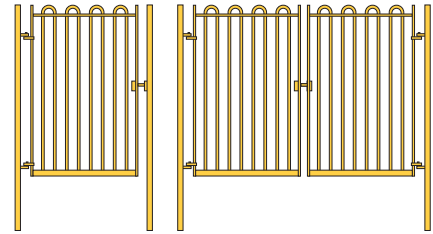
TYPICAL UltraBAR™ VERTICAL GATE DETAIL



TYPICAL UltraBAR™ BOW TOP GATE DETAIL



TYPICAL UltraBAR™ PLAYGROUND GATE DETAIL



SINGLE LEAF UltraBAR™ GATES - BETWEEN POSTS

	1.310	1.560	1.810	2.060	2.310	2.580	2.830	3.000
1.000	✓	✓	✓	✓	✓	✓	✓	✓
1.200	✓	✓	✓	✓	✓	✓	✓	✓
1.500	✓	✓	✓	✓	✓	✓	✓	✓
1.800	✓	✓	✓	✓	✓	✓	✓	✓
2.100	✓	✓	✓	✓	✓	✓	✓	✓
2.400	✓	✓	✓	✓	✓	✓	✓	✓

DOUBLE LEAF UltraBAR™ GATES - BETWEEN POSTS

	2.590	3.090	3.590	4.090	4.590	5.130	5.630	6.130
1.000	✓	✓	✓	✓	✓	✓	✓	✓
1.200	✓	✓	✓	✓	✓	✓	✓	✓
1.500	✓	✓	✓	✓	✓	✓	✓	✓
1.800	✓	✓	✓	✓	✓	✓	✓	✓
2.100	✓	✓	✓	✓	✓	✓	✓	✓
2.400	✓	✓	✓	✓	✓	✓	✓	✓

Case Studies



A



B



C



D



E

- A. St. Johns RC Primary School**
- B. Haddon House Respite**
- C. St. Annes Primary School**
- D. Aldington Library**
- E. Manchester Piccadilly Railway Station**

