

gemini

...creating lifetime bonds

ADHESIVES | R & D | EXTRUSIONS | SUSTAINABILITY



GEMINI ADHESIVES
FULL ADHESION
GUARANTEE
subject to T&C

Contract Flooring Products Direct

Nationwide delivery next working day direct from the manufacturer

Freephone 0800 328 4267

Contents

Introduction to Gemini	3
Adhesives Introduction	4
Grabfast Adhesives Range	5
Grabfast	6
Grabfast Gold	6
Grabfast Bio	7
Grabfast Gold Bio	7
Grab-Tac Adhesives Range	8
Grabtac 2014	9
Grabtac Water Based	9
Adhesive Application Guide	10
Accessories	11
Gemini Flexible Flooring Profiles - Introduction	12
Gemini Flexible Capping Strip - GCS-01	13
Gemini Flexible Cove Former - GCF-038	14
Gemini Flexible Cove Former - GCF-020	15
Gemini Tile Capping - GTC	16
Gemini Flexible Sit-on Skirting - GSO-100	17
Gemini Flexible Flat Skirting - GFS-100	18
Gemini Flexible Set-in Skirting - GSI-100-02 & 100-02.5	19
Gemini Reducing Strip - GRS-02, GRS-02.5 & GRS-03.2	20
Gemini Step Reducing Strip - GSRS-04.5 & GSRS-06	21
Product Profile Guide	22
The Gemini Guarantee – Total Peace of Mind	23
capFIX	24

gemini
...creating lifetime bonds

ADHESIVES | R & D | EXTRUSIONS | SUSTAINABILITY

As a flooring contractor, it is vital for you to have a range of adhesives and flexible extrusions you can rely on 100%. That's why at Gemini we manufacture the most technically advanced range of adhesives and flexible extrusions in the world.



Our focus is to provide you with the most environmentally friendly products at competitive prices without compromising quality.

Complete peace of mind

Our substantial investment in research and development guarantees you access to continuously improving products. No matter what site conditions you face, our solutions deliver the very best adhesives on the market.

Independently tested

When accredited testing or analysis is required, we partner with recognised third party independent UKAS accredited test centres, such as Satra Technology (www.satra.co.uk), Smithers Rapra (www.rapra.net) and The Reach Centre (www.thereachcentre.com).

In addition, we use the services of Eurofins (www.eurofins.com) and RPS (www.rpsgroup.com) to determine the impact our products have in their day to day use on both the operative and the environment.

Available with
NATIONWIDE NEXT DAY DELIVERY DIRECT FROM GEMINI

THE WINNING COMBINATION!

RANGE OF SPRAY ADHESIVES & STABLE PHTHALATE FREE PROFILES



Adhesives Introduction

Our adhesive formulations are completely unique to Gemini and have been rigorously tested to be fit for purpose before going to market. Since its introduction, the Grabfast range of adhesives has become the No.1 choice for contractors across the UK and Europe.

Looking after your workforce

The safety of your workforce is of paramount importance which is why we put your operatives' needs first. We work closely with flooring contractors to ensure operatives enjoy the ease of application and the confidence in the adhesives' performance our products provide. An important element of this is ensuring solvent exposure is kept to an absolute minimum.

Full technical support

When buying an adhesive from Gemini you have access to the technical knowledge and expertise of our in house flooring consultant. With years of contract flooring industry experience, he provides an unparalleled level of knowledge and support to help you and your business.



Grabfast Adhesives Range

The world's leading spray adhesives

All our Grabfast adhesives are formulated from the highest quality resins and manufactured using Gemini's unique canister technology.

They offer the fastest, most cost effective range of products for bonding carpets, rigid PVC wall cladding, rubber, linoleum, marmoleum, some vinyls and various other materials.



This container will be collected for recycling

FREEPHONE

0800 3284267

INTERNATIONAL STANDARD

ISO 14021

TYPE II ENVIRONMENTAL CLAIM

Canister Recycling Service

Gemini offer a free canister collection service to recycle your empty Gemini adhesive canisters. This canister collection and recycling is carried out in line with ISO 14021.

Grabfast Range Benefits

- Self-contained and maintenance free
- Low odour and solvent exposure
- No wastage of adhesive
- Spray gun guaranteed for life

Independent Performance Testing

- Satra FLO 00268 Peel test for adhesives for floor and wall coverings
- Satra FLO 0145627-1-0648 test to determine the effect on adhesion after immersion

If in any doubt about the suitability for a certain application please do not hesitate to contact our technical department at Gemini who will be happy to assist.

Grabfast Product Range



GRABFAST

The original spray adhesive and still a big favourite with contractors.

The original Grabfast spray adhesive took the market by storm when it was first launched. Today it remains a firm favourite because of its ease of application and consistent high performance results.

Technical Data

Chemical Name	Sprayable contact adhesive
Appearance	Clear liquid
Coverage	15 sq m per Kg

Temperature Stability	85°C
Glue %	Solids 28 - 34%
Adhesive Flammability	Class one fire rated
Shelf Life	1 Year



GRABFAST *Gold*

THE NEXT GENERATION

Takes spray adhesive performance to a new level and has become the floor fitters' No.1 choice.

The hard wearing natural resins ensure a bond strength, temperature stability and water resistance that cannot be matched by any other spray adhesive worldwide.



This container will be collected for recycling
FREEPHONE
0800 3284267
 INTERNATIONAL STANDARD
ISO 14021
 TYPE II ENVIRONMENTAL CLAIM

Technical Data

Chemical Name	Sprayable contact adhesive
Appearance	Clear liquid
Coverage	15 sq m per Kg

Grabfast Gold is fully guaranteed when used in conjunction with Gemini PVC profiles.

Temperature Stability	130°C – High temperature stability
Glue %	Solids 38 - 42%
Adhesive Flammability	Class one fire rated
Shelf Life	1 Year

GRABFAST GOLD - THERE IS NO COMPARISON!

Grabfast Product Range



GRABFAST

Manufactured with a blend of Bio solvents, Grabfast Bio provides all the benefits and performance levels of the original Grabfast, but carries no solvent working exposure risk to the operative. The advanced technology, research and global material sourcing have enabled Gemini to manufacture a safer product using the same high quality resins of Grabfast.

Technical Data

Health & Safety	No working solvent exposure limits
Chemical Name	Sprayable contact adhesive
Appearance	Clear liquid

Coverage	19 sq m per Kg
Temperature Stability	85°C
Glue %	Solids 28 - 34%
Shelf Life	1 Year



GRABFAST Gold

THE NEXT GENERATION

Grabfast Gold, the fitters' No.1 choice, now available in a Bio solvent version.

Advanced technology, research and global material sourcing have enabled Gemini to replace the solvent with a Bio blend that carries no solvent exposure limits.



This container will be collected for recycling
FREEPHONE
0800 3284267
 INTERNATIONAL STANDARD
ISO 14021
TYPE B ENVIRONMENTAL CLAIM

Specific Technical Data

Health & Safety	No working solvent exposure limits
Chemical Name	Sprayable contact adhesive
Appearance	Clear liquid

Grabfast Gold Bio is fully guaranteed when used in conjunction with Gemini PVC profiles.

Coverage	19 sq m per Kg
Temperature Stability	130°C – High temperature stability
Glue %	Solids 38 - 42%
Shelf Life	1 Year

GRABFAST GOLD - THERE IS NO COMPARISON!

Grab-Tac

Gemini's carpet tile adhesives range

GRAB-TAC and GRAB-TAC 2014 are fast drying, high tack carpet tile adhesives designed for bonding carpet tiles to a wide range of substrates including wood, metal and concrete.

Following the success of the Grabfast range of spray adhesives, market demand led to the development of a spray adhesive designed specifically for the carpet tile sector.

Known as the Grab-Tac range, it is based around the principles of the Grabfast spray adhesives. It utilises the same bulk aerosol system which has no wastage and application has proved to be seven times faster than the traditional trowelling of adhesives.

Grab-Tac Range Benefits

- High speed application
- Self-contained & maintenance free
- Moisture resistant
- Fast drying time
- Even coverage
- Low odour
- Long-lasting high tack adhesion
- Canisters collected & recycled in line with ISO 14021



This container will be collected for recycling
FREEPHONE
0800 3284267
INTERNATIONAL STANDARD
ISO 14021
TYPE II ENVIRONMENTAL CLAIM

If in any doubt about the suitability for a certain application please do not hesitate to contact our technical department at Gemini who will be happy to assist.

Grab-Tac

Gemini's carpet tile adhesives range



GRAB-TAC 2014

CARPET TILE ADHESIVE

GRAB-TAC 2014 is a solvent based carpet tile tackifier which is maintenance free. The adhesive is applied using a fully adjustable lance allowing the adhesive to be applied right up to the perimeter of the room.

Please be aware that **GRAB-TAC 2014** is a solvent based product, it may not be suitable for some PVC backed carpet tiles containing high levels of plasticiser.

Technical Data

Coverage Dependent on substrates between 300 – 500 sq m. High coverage achieved on perfect or metal access floors.

Appearance	Clear liquid
VOCs	Low
Adhesive Flammability	Non-flammable
Shelf Life	1 Year



GRAB-TAC

CARPET TILE ADHESIVE

GRAB-TAC is a water based carpet tile tackifier which is very low maintenance. The adhesive is applied using a fully adjustable lance, the spray pattern enables a higher coverage and faster application than **GRAB-TAC 2014**.

GRAB-TAC is suitable for fitting PVC backed carpet tiles.



This container will be collected for recycling
FREEPHONE
 0800 3284267
 INTERNATIONAL STANDARD
ISO 14021
TYPE B ENVIRONMENTAL CLAIM

Technical Data

Coverage Approximately 500 sq m. High coverage achieved on perfect or metal access floors.

Appearance Clear liquid

VOCs	Very low (Classified A+ global compliant)
Toxicity	Solvent free, water based
Shelf Life	1 Year
Storage Temp.	Above 5°C (DO NOT ALLOW TO FREEZE)

Adhesive Application Guide

Grabfast and Grabfast Gold

All substrates to be bonded should be conditioned at room temperature prior to fabrication. Surfaces should be dry, clean, grease and dust free. Hold the gun parallel to the work surface applying a generous coat of adhesive, the perfect bond will result from 80-100% coverage. Do not allow the adhesive to puddle or concentrate in one area. Double coating is recommended on porous surfaces. Ensure the first coat is dry before applying a second. It is important to remember that Grabfast is a contact adhesive and forms its bond by sticking to itself, so there must be sufficient adhesive on both surfaces for this to happen. Allow the adhesive to tack up, it is ready to bond when dry to the touch with no transference to the finger. Note - GRABFAST is ready to bond in 2 minutes under normal temperature and humidity, high humidity and low temperature will slow the drying time. Bring the surfaces together using a j-roller, uniform pressure of 50-70lbs per linear inch is recommended. Grabfast Gold should be bonded within 1 hour of application to achieve the best adhesion. Never bring the two surfaces together prematurely as solvent will be trapped causing bubbles over time.

Remember to leave the canister turned ON when connected to the gun and hose even when not in use. Only turn the tap off when it is empty and connecting to another canister.

Gemini will only guarantee the stability and adhesion of the flooring profile manufactured by ourselves with Grabfast and Grabfast Gold. Gemini cannot guarantee the stability and long term adhesion of other PVC profiles, PVC floor coverings and products manufactured using recycled material. It is important to test all the substrates to be bonded before going into production or undertaking a large contract. It is the responsibility of the user to ensure the adhesives suitability to the substrates and environment. If you are unsure, please do not hesitate to contact Gemini Adhesives technical department who will be more than happy to assist.

Grab-Tac and Grab-Tac 2014

All surfaces must be clean, dry and free from oil, grease and paint. Any excessive dust must be removed as failure to do so will impair the performance of the adhesion. If applying the adhesive directly on to concrete or sand and cement screeds, they must be fully cured and laitance free. If applying to earth subfloors an efficient damp proof membrane must be incorporated. Site conditions must comply with British Standards CP 102 (code of practice for protection of building against water from underground), BS 5325 (installation of textile floor coverings) and all supplementary publications must be followed throughout the installation.

The GRAB-TAC adhesives are fast drying, high tack carpet tile adhesives. They are designed for bonding carpet tiles to a wide range of substrates including wood, metal and concrete. The bulk aerosol system has no wastage and has proved to be seven times fast than the traditional trowelling of adhesives. To apply the adhesive simply position the wand approximately 40 - 50cm from the floor and spray the adhesive evenly in a thin layer moving constantly across the area to be coated. In order to achieve a releasable bond allow the adhesive to dry.

Grab-Tac will adopt a clear appearance when dry; depending on the thickness of coverage and the room atmosphere, this will take approximately 10 minutes. Once the carpet tiles have been laid they can be repeatedly lifted without damaging the adhesive or substrates, however, if the tiles are laid whilst the adhesive is still wet a permanent bond will be formed. Whilst Grab-Tac is on site ensure the spray tip is submerged in water when not being sprayed. At the end of the contract if the system is to stand unused for a while then it is advisable to flush it out with Gemini Gun Wash so it is ready for instant use in the future.

The **Grab-Tac 2014** system is maintenance free as long as the hose is connected to a canister with the tap turned on. In order to achieve a releasable bond allow the adhesive to become dry to touch with no transfer to the finger; depending on the thickness of coverage and the room atmosphere, this will take approximately 2 minutes. Once the carpet tiles have been laid they can be repeatedly lifted without damaging the adhesive or substrates.

The brass spray tips can be cleaned by submerging in spirit based solvent. Additional brass tips are available from Gemini on request.

See our website for useful videos www.geminiadhesivesgroup.com

Gemini Accessories



Gun

A fully controllable professional spray gun with a spray pattern that can be adjusted from 1 to 10 inches.

Hose

A flexible rubber hose - standard length 12 foot. Other lengths are available upon request.



Lance for Grab-Tac

A professional spray lance gun with spray pattern adjustment. The lance is great at saving your back.

Gun Wash

Gun Wash is used to clean out your spray guns, lances and hoses after using Grab-tac.



Roller

A hand-held pressure roller, ideal for laminates and floor coverings. It has a 3 inch wide non-marking black rubber roller.

Extension Roller

Three non-marking rubber rollers with telescopic handle that extends from 17 to 27 inches.



Spaygun Nozzle

Brass tips for the spray guns (only clean by soaking in solvents).

Gemini Flexible Flooring Profiles

Guaranteed not to fail

Gemini phthalate free flexible flooring profiles, when used in conjunction with Grabfast Gold spray adhesive, offer a competitively priced, easy to install, hard wearing and scuff resistant resilient floor finishing system guaranteed not to fail.

If you are responsible for installing robust flooring in hospitals, schools and other facilities where ease of cleaning is an important factor, you need to be able to rely 100% on the products and adhesives you use.

It is vital that this type of flooring is finished with an effective, flexible flooring profile to ensure that easy cleaning at the edges is possible throughout the life of the installation. It has become commonplace to see these finishes fail with loss of adhesion and shrinkage at the joints.

These issues leave exposed adhesive which creates breeding grounds for potentially dangerous microbes and make proper cleaning impossible. Such failures are not only difficult, but also expensive to repair or replace.

Why the Failures?

Using our own laboratories together with independent sources such as SATRA Technologies, the REACH Centre and the Department of Chemistry at Lancaster University, Gemini has carried out extensive research as to why these common problems occur.

Results from the tests clearly show that under certain conditions some plasticisers contained within leading brands of PVC compounds can migrate from the product and that this is consistent with the de-bonding and shrinkage issues reported.

In addition, traditional PVC plasticisers are substances known collectively as phthalates. Some of these are considered to be hazardous to human health to the extent that they feature on the REACH list of 'Substances of Very High Concern.' They also feature on other lists of potentially toxic chemicals produced by non-governmental organisations around the world.

The Gemini Solution

Following the research, Gemini formulated PVC profiles and an adhesive combination to eliminate these issues. Our PVC formulations are softened using a non-phthalate plasticiser that has a heavier molecular weight and non-migratory properties.

The profiles have been extensively tested for performance together with our Grabfast Gold adhesive. The combination of the adhesive and PVC compound enables Gemini to offer a full adhesion guarantee subject to normal approved installation methods.

In addition, our adhesive containers are fully recyclable and each is labelled with the phone number of our nationwide free collection and recycling service.

Gemini PVC profiles and Grabfast Gold
THE WINNING COMBINATION



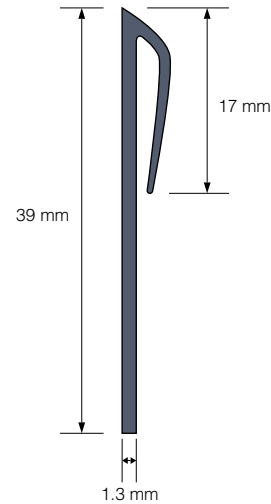
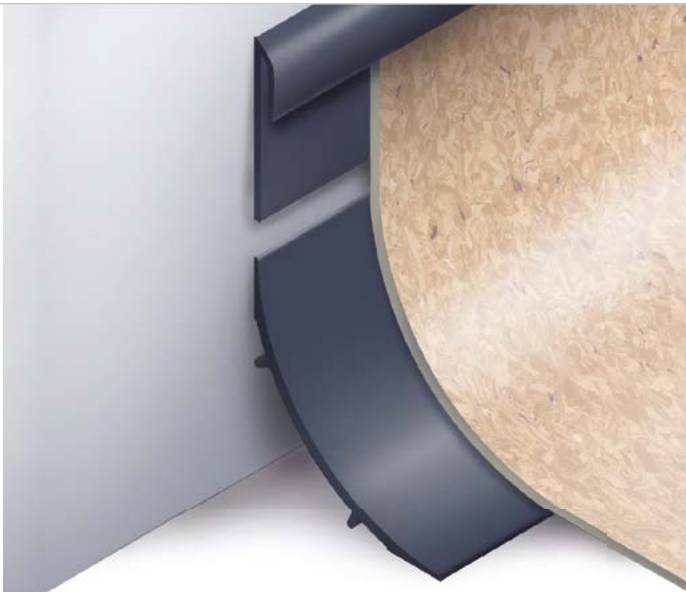
Gemini extrusion line



Gemini installation

Gemini Flexible Capping Strip

GCS-01



Available in Colours



A flexible PVC capping strip to be fitted along the top of floor coverings when coving up the wall. To be used in conjunction with GCF-038 and adhered to the wall using Grabfast Gold.

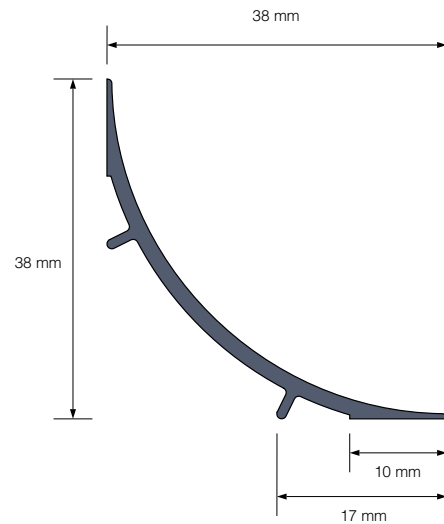
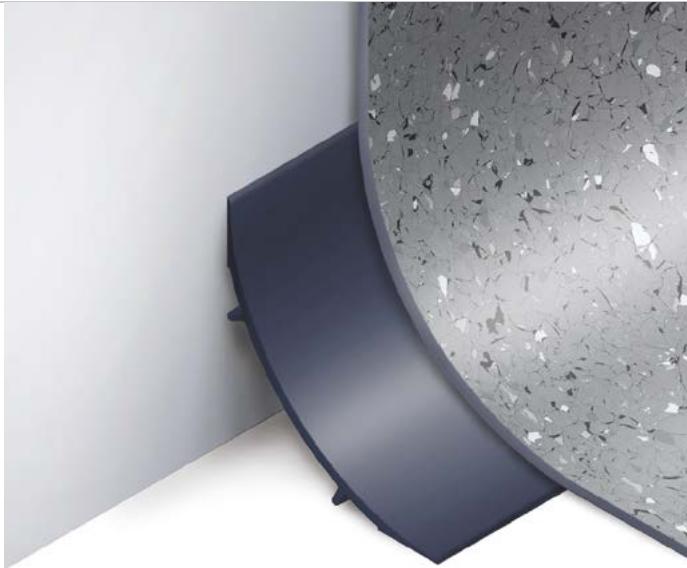
Specification

- **Type:** Capping strip
- **Environment:** Interior
- **Material:** Phthalate free PVC
- **Height:** 39mm
- **Boxed quantity:** 100m (2m lengths or 25m coils)
- **Used with:** Resilient floorcovering
- **Full adhesion guarantee**
- **Fitted by licensed Gemini PVC fitters**
- **Secured in place by Grabfast Gold**



Gemini Flexible Cove Former

GCF-038



Available in Colours



A flexible PVC with a 38mm radius fitted into the corner providing a smooth contour. No need for right angles where dirt can gather. This also avoids the flooring material having to cope with unnecessary stress. Secured in place using Grabfast Gold.

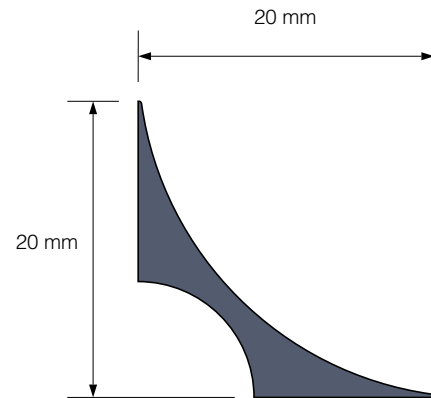
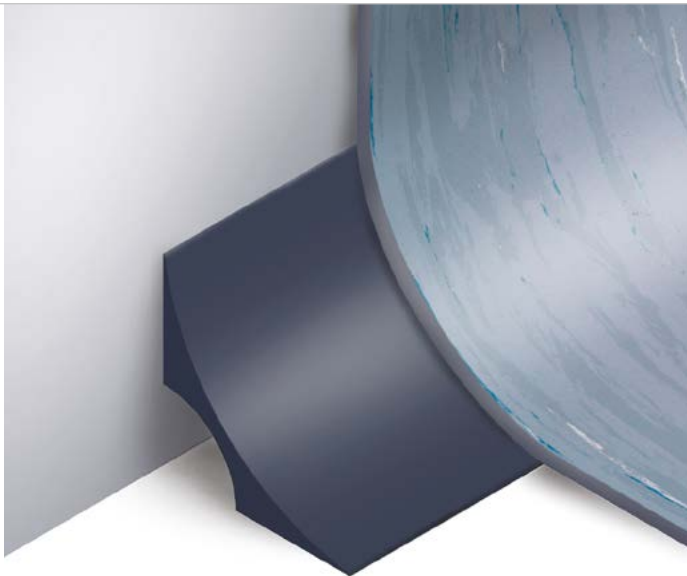
Specification

- **Type:** Cove former
- **Environment:** Interior
- **Material:** Phthalate free PVC
- **Radius:** 38mm
- **Boxed quantity:** 100m (2m lengths)
- **Used with:** Resilient floorcovering
- **Full adherence guarantee**
- **Fitted by licensed Gemini PVC fitters**
- **Secured in place by Grabfast Gold**



Gemini Flexible Cove Former

GCF-020



Available in Colours



A flexible PVC with a 20mm radius fitted into the corner providing a smooth contour. No need for right angles where dirt can gather. This also avoids the flooring material having to cope with unnecessary stress. Secured in place using Grabfast Gold.

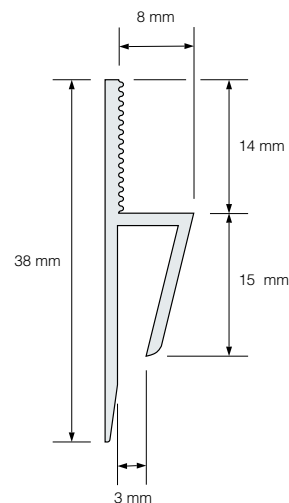
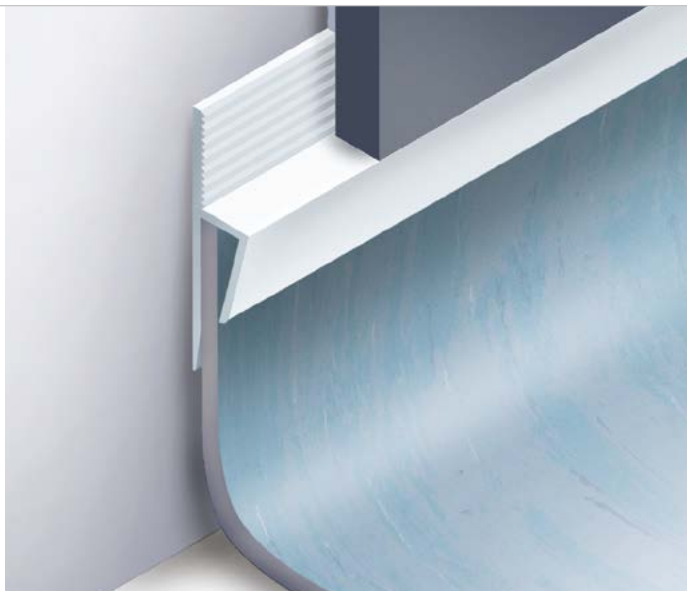
Specification

- **Type:** Cove former
- **Environment:** Interior
- **Material:** Phthalate free PVC
- **Radius:** 20mm
- **Boxed quantity:** 100m (2m lengths)
- **Used with:** Resilient floorcovering
- **Full adhesion guarantee**
- **Fitted by licensed Gemini PVC fitters**
- **Secured in place by Grabfast Gold**



Gemini Tile Capping

GTC



Available in Colours



A semi flexible, low maintenance trim, used for the transition between ceramic tiles and resilient floor coverings. Normally installed where a resilient floor covering has been covered up to form a skirting, meeting with a ceramic wall finish. Secured in place using Grabfast Gold.

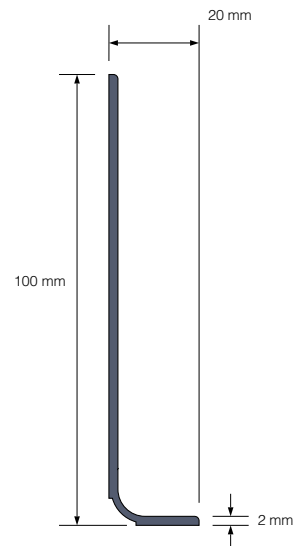
Specification

- **Type:** Capping strip
- **Environment:** Interior
- **Material:** UV resistant, phthalate free PVC
- **Height:** 38mm
- **Boxed quantity:** 100m (2m lengths)
- **Full adhesion guarantee**
- **Used with:** Resilient floorcoverings in conjunction with ceramic tiles
- **Fitted by licensed Gemini PVC fitters**
- **Secured in place by Grabfast Gold**



Gemini Flexible Sit-on Skirting

GSO-100



Available in Colours



A flexible sit-on skirting, low maintenance, used as an alternative to traditional skirting, fitted on top of a hard floor covering, providing a seal between floor and vertical wall. Adhered to the wall using Grabfast Gold.

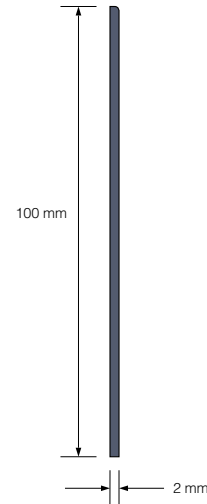
Specification

- **Type:** Sit-on skirting
- **Environment:** Interior
- **Material:** Phthalate free PVC
- **Height:** 100mm
- **Boxed quantity:** 60m (2m lengths)
- **Used with:** Resilient floorcovering
- **Full adherence guarantee**
- **Fitted by licensed Gemini PVC fitters**
- **Secured in place by Grabfast Gold**



Gemini Flexible Flat Skirting

GFS-100



Available in Colours



A flexible flat skirting, low maintenance, used as an alternative to traditional skirtings, fitted on top of a hard floor covering providing protection to the vertical wall. Adhered to the wall using Grabfast Gold.

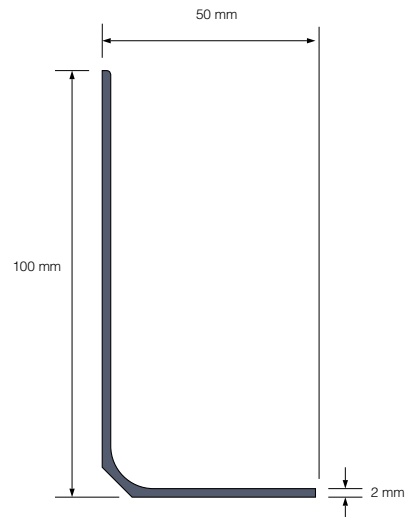
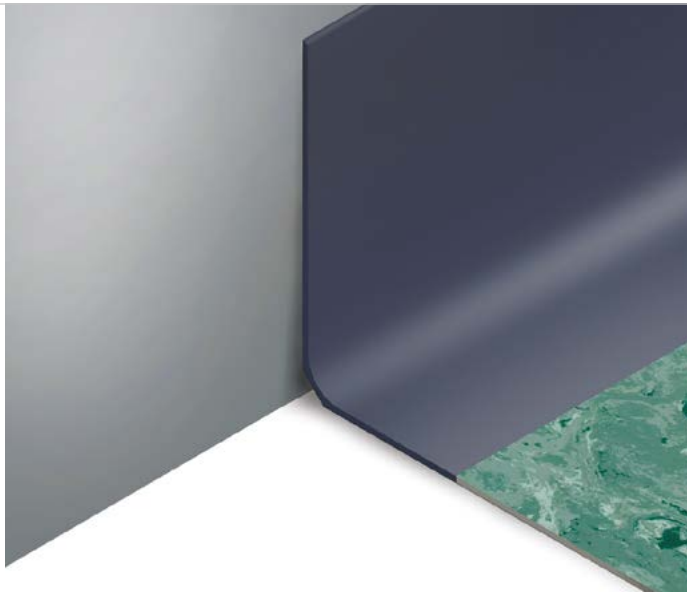
Specification

- **Type:** Flat skirting
- **Environment:** Interior
- **Material:** Phthalate free PVC
- **Height:** 100mm
- **Boxed quantity:** 50m (2 x 25m coils)
- **Used with:** Resilient floorcovering
- **Full adhesion guarantee**
- **Fitted by licensed Gemini PVC fitters**
- **Secured in place by Grabfast Gold.**



Gemini Flexible Set-in Skirting

GSI-100-02 & 100-02.5



Available in Colours



A flexible, low maintenance, set-in skirting used as an alternative to traditional mechanically fixed timber, creating a protective face against the wall, welded to the connecting floor covering, providing an impervious seal. Secured in place using Grabfast Gold. Skirting available in sizes of 100mm x 50mm and gauges of 2mm & 2.5mm.

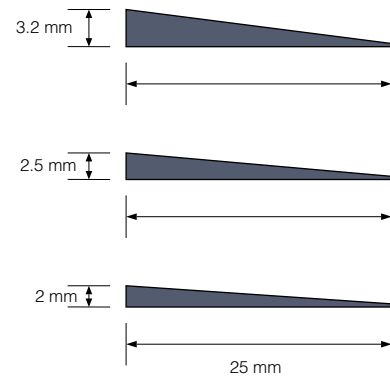
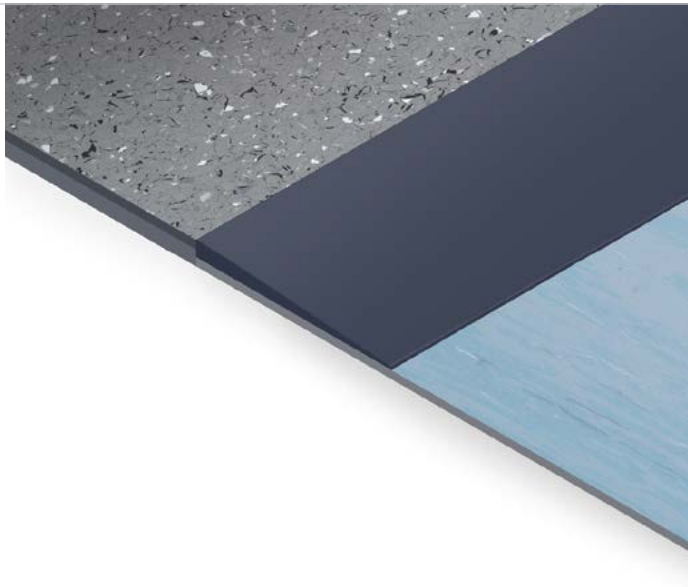
Specification

- **Type:** Set-in skirting
- **Environment:** Interior
- **Material:** Phthalate free PVC
- **Height:** 100mm
- **Width:** 50mm
- **Boxed quantity:** 40m (2m lengths)
- **Full adherence guarantee**
- **Used with:** Resilient floorcoverings
- **Fitted by licensed Gemini PVC fitters**
- **Secured in place by Grabfast Gold**



Gemini Reducing Strip

GRS-02, GRS-02.5 & GRS-03.2



Available in Colours



Flexible, low maintenance, reducing strips used as an alternative to traditional mechanically fixed steel trims, creating a protective edge for resilient or textile floor coverings, reducing the transition to the subfloor, eliminating hazardous trips.

Alternatively can be used underneath the transition between two different thicknesses to gain a flush finish. Secured in place using Grabfast Gold. Reducing strips available in 2mm x 25mm, 2.5mm x 25mm, 3.2mm x 25mm.

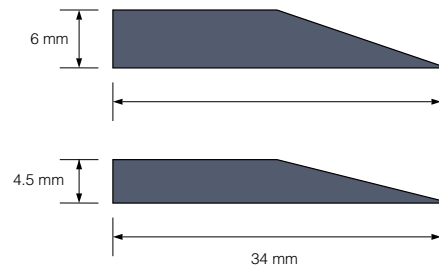
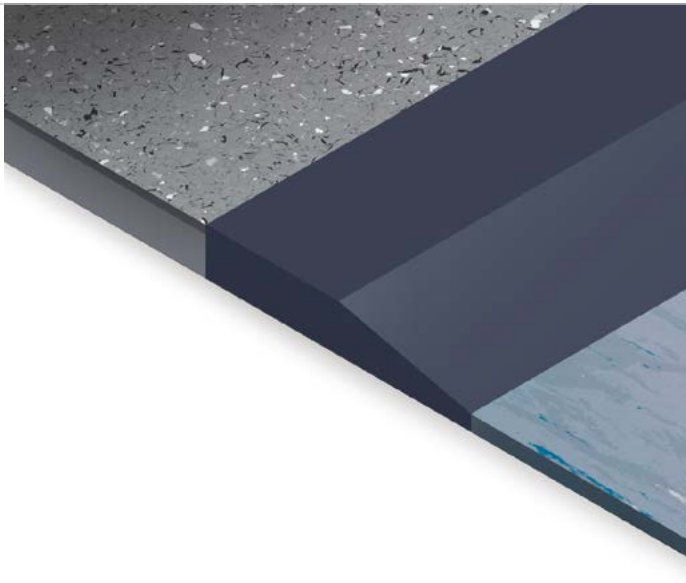
Specification

- **Type:** Reducing strip
- **Environment:** Interior
- **Material:** Phthalate free PVC
- **Height:** 2mm/2.5mm/3.2mm
- **Boxed quantity:** 1 x 25m coil
- **Used with:** Resilient floorcoverings
- **Full adhesion guarantee**
- **Fitted by licensed Gemini PVC fitters**
- **Secured in place by Grabfast Gold**



Gemini Step Reducing Strip

GSRS-04.5 & GSRS-06



Available in Colours



Flexible, low maintenance, reducing strips used as an alternative to traditional mechanically fixed steel trims, creating a protective edge for resilient or textile floor coverings, reducing the transition to the subfloor, eliminating hazardous trips. Alternatively can be used underneath the transition between two different thicknesses to gain a flush finish. Secured in place using Grabfast Gold. Reducing strips available in 4.5mm x 34mm and 6mm x 34mm.

Specification

- **Type:** Reducing strip
- **Environment:** Interior
- **Material:** Phthalate free PVC
- **Height:** 4.5mm/6mm
- **Width:** 34mm
- **Boxed quantity:** 60m (2m lengths)
- **Used with:** Resilient floorcoverings
- **Full adhesion guarantee**
- **Fitted by licensed Gemini PVC fitters**
- **Secured in place by Grabfast Gold**



Gemini Profile Product Guide

Profiles	Available Colours				Features		Installation Adhesive	Full Adhesion Guarantee	Qty
	White	Light Grey	Dark Grey	Black	Phthalate Free	Carbon Black Free	Grabfast Gold		Box Quantity
Gemini Flexible Capping Strip GCS-01	●	●	●	●	●	●	●	●	100m 2m lengths 25m coils
Gemini Flexible Cove Former GCF-038				●	●	●	●	●	100m 2m lengths
Gemini Flexible Cove Former GCF-020				●	●	●	●	●	100m 2m lengths
Gemini Tile Capping GTC	●				●	●	●	●	100m 2m lengths
Gemini Flexible Sit-on Skirting GSO-100	●	●	●	●	●	●	●	●	60m 2m lengths
Gemini Flexible Flat Skirting GFS-100	●	●	●	●	●	●	●	●	50m 25m coils
Gemini Flexible Set-in Skirting GSI-100-02 & 100-02.5	●	●	●	●	●	●	●	●	40m 2m lengths
Gemini Reducing Strip GRS-02, GRS-02.5 & GRS-03.2				●	●	●	●	●	25m 25m coil
Gemini Step Reducing Strip GSRs-04.5 & GSRs-06				●	●	●	●	●	60m 2m lengths

Freephone Sales Line UK:

0800 328 4267

Email:

info@geminiadhesivesgroup.com

www.geminiadhesivesgroup.com

Gemini Adhesives Limited

New Building
Top Road
Osgathorpe
Leicestershire
LE12 9TB

gemini
...creating lifetime bonds
ADHESIVES | R & D | EXTRUSIONS | SUSTAINABILITY

The Gemini Guarantee

Total peace of mind



Gemini provides four easy steps to give your clients total peace of mind:

- Become a licensed Gemini fitter
- Install Gemini profiles with Grabfast Gold
- Register installations online
- Gemini will visit the site and provide a manufacturer backed written guarantee against de-bonding and shrinkage

Visit www.geminiadhesivesgroup.com to register or ask your local representative for details.





Fed up with capping strips

de-bonding ?

At **capFIX**, we will solve your capping or skirting issues and give you a **full adhesion guarantee***.

* Subject to site survey

Our **capFIX** solution includes removing your existing capping or skirting, sealing the wall and fitting our proven phthalate and carbon black free capping or skirting.

capFIX is ideal for any facility requiring a germ-free, safe and secure environment.



HEALTH



CATERING



LABORATORIES



RETAIL



LEISURE



EDUCATION

For a solution you can trust, book your **FREE** site survey **TODAY**.

Call Freephone **0800 313 4181** or email solutions@capfix.uk.com