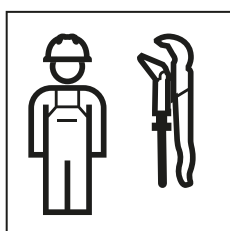


MAINTENANCE MANUAL

**KNOW
HOW
INSTALLED**



Safety

About this document

This document applies to the professional maintenance of the following products:

- Geberit washbasin tap Piave, deck and wall mounting
- Geberit washbasin tap Brenta, deck and wall mounting


Target group

Maintenance and repair work on this product may only be performed by skilled persons. A skilled person is a person who, due to their specialist education, training and/or experience, is able to recognise risks and avoid hazards that may arise when using the product.

Intended use

The Geberit washbasin taps Piave and Brenta are intended to extract tap water. Using them for any other purpose is deemed improper. Geberit accepts no liability for the consequences of improper use.

Alert levels and symbols in this manual

Alert levels and symbols
ATTENTION Indicates a hazard which, if not avoided, can lead to material damage.
 Refers to important information.

Safety notes

Incorrect maintenance work or repairs can result in damage or malfunctions.

- Only use original spare parts when making repairs.
- Do not modify the product or add any additional modules.

Product description

Structure of deck-mounted tap

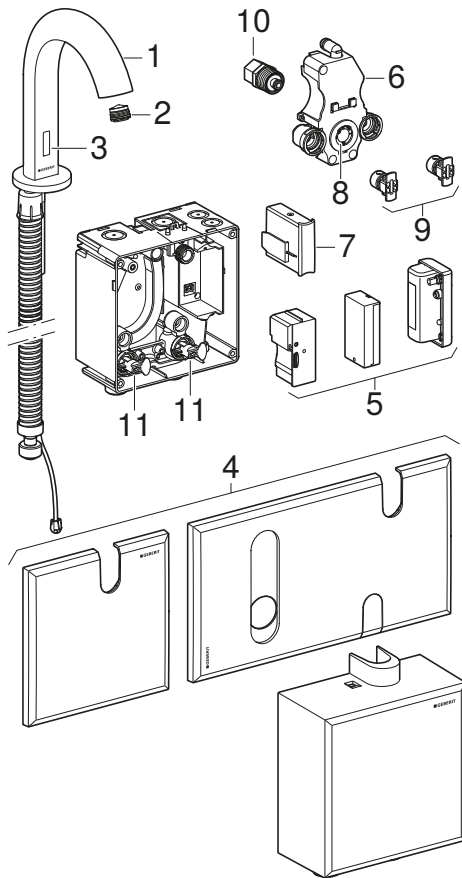


Figure 1: Geberit washbasin taps Piave and Brenta, deck-mounted

- 1 Tap housing with protecting hose
- 2 Tap aerator
- 3 IR sensor
- 4 Cover plate or cover
- 5 Power supply (power supply unit, battery box or rechargeable battery for generator operation)
- 6 Functional unit
- 7 Control electronics
- 8 Mixer
- 9 Basket filter
- 10 Solenoid valve
- 11 Shut-off units

Structure of wall-mounted tap

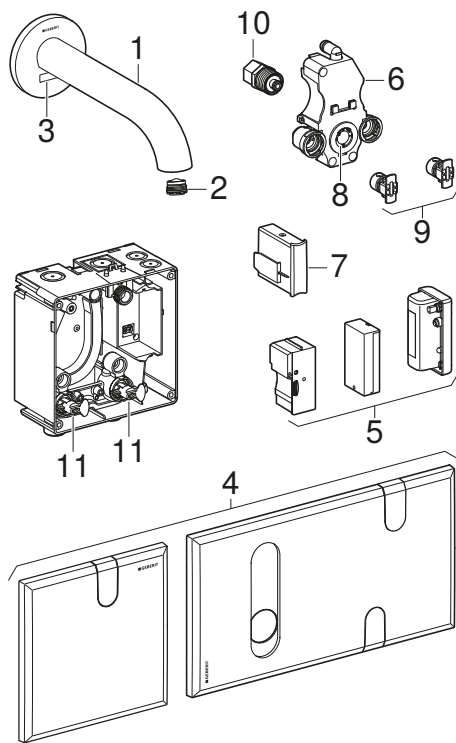


Figure 2: Geberit washbasin taps Piave and Brenta, wall-mounted

- | | |
|----|---|
| 1 | Tap housing |
| 2 | Tap aerator |
| 3 | IR sensor |
| 4 | Cover plate |
| 5 | Power supply (power supply unit, battery box or rechargeable battery for generator operation) |
| 6 | Functional unit |
| 7 | Control electronics |
| 8 | Mixer |
| 9 | Basket filter |
| 10 | Solenoid valve |
| 11 | Shut-off units |

Technical data

The following technical data applies to the Geberit washbasin taps Piave and Brenta for deck and wall mounting.

	Mains operation	Battery operation ¹⁾	Generator operation ²⁾
Nominal voltage	110–240 V AC	–	–
Mains frequency	50–60 Hz	–	–
Operating voltage	4.5 V DC	3 V DC	3.2 V DC
Battery type	–	Alkaline battery (1.5 V AA)	–
Power consumption	0.1 W	–	–
Operating pressure	0.5–10 bar	0.5–10 bar	2–10 bar
Ambient temperature	1–40 °C	1–40 °C	1–40 °C
Storage temperature	-20 – +70 °C	-20 – +70 °C	-20 – +70 °C
Maximum water temperature	60 °C	60 °C	60 °C
Maximum water temperature, short-term	90 °C	90 °C	90 °C
Flow rate at 3 bar ³⁾	5 l/min	5 l/min	5 l/min

– Does not apply

¹⁾ The battery service life is sufficient for around 200,000 activations.

²⁾ When used at least 20 times per day on average for a duration of 4s each, the washbasin tap works in a self-sustaining manner.

³⁾ Tap aerators with a flow limitation of 1.3 l/min, 1.9 l/min or 3.8 l/min are available as accessories.

Rectifying malfunctions

The operator can perform the following measures to rectify malfunctions:

- clean the tap aerator
- clean the basket filter
- replace the batteries
- charging the rechargeable battery for generator operation

These measures are described in the operation manual 967.455.00.0.

Malfunction	Cause	Rectification
Water jet too weak	Tap aerator dirty	▶ Clean the tap aerator. → See operation manual 967.455.00.0.
	Basket filter clogged	▶ Clean the basket filter. → See operation manual 967.455.00.0.
	Pipe pressure too low	▶ Test pipe pressure (0.5–10 bar).
No flush actuation	Pipe pressure too low	▶ Test pipe pressure (0.5–10 bar).
	Network failure	▶ Check the power supply.
	Batteries dead or rechargeable battery empty	▶ Replace batteries or charge rechargeable battery for generator operation. → See operation manual 967.455.00.0.
	Washbasin tap is in cleaning mode (red LED flashes)	▶ Wait approx. 2 minutes.
	Detection distance not set correctly	▶ Optimise the detection distance.
	Interfering reflections from the washbasin	▶ Optimise the detection distance.
	Solenoid valve defective	▶ Replace the solenoid valve.
	IR sensor defective	▶ Replace IR sensor.
Control electronics defective	▶ Restart the control electronics. → See "Restarting the control electronics", page 10. ▶ Replace the control electronics.	
Water runs continuously	Interfering objects in the detection range	▶ Remove objects from the detection range.
	Solenoid valve defective	▶ Replace the solenoid valve.
	IR sensor defective	▶ Replace IR sensor.
	Pipe pressure too high	▶ Test pipe pressure (0.5–10 bar).
	Control electronics defective	▶ Restart the control electronics. → See "Restarting the control electronics", page 10. ▶ Replace the control electronics.

Malfunction	Cause	Rectification
Unwanted flow of water, either too soon or delayed	IR window is dirty or wet	▶ Clean or dry the IR window.
	IR window scratched	▶ Replace IR sensor.
	Detection distance of the IR sensor not set correctly	▶ Optimise the detection distance.
	IR sensor is being adversely affected by influences in the room (mirrors, metal surfaces, glass washbasins, etc.)	▶ Restart the control electronics. → See "Restarting the control electronics", page 10. ▶ Recalibrate IR sensor. → See "Setting the detection distance of the IR sensor", page 10.
	Pressure fluctuations in the water net	▶ Install a suitable pressure regulator.
Water drips from the tap housing	Leaky water way	▶ Test the water way. ▶ Replace connection hose and seals.
	Solenoid valve does not close properly	▶ Clean or replace the solenoid valve.
Water temperature cannot be set (only washbasin taps with a mixer)	Dirty basket filter	▶ Clean the basket filter. → See operation manual 967.455.00.0.
	Differentiated pressure between the hot and cold water pipe is greater than 1.5bar	▶ Adjust the differentiated pressure. ▶ Install a flow limiter or a water pressure reducing valve.
	Water temperature too low or too high	▶ Test the water temperature.
Red LED flashes during flush actuation	Batteries almost dead or rechargeable battery almost empty	▶ Replace batteries or charge rechargeable battery for generator operation. → See operation manual 967.455.00.0.

Maintenance

Maintenance performed by the operator

The operator may perform the following maintenance work. → See operation manual 967.455.00.0.

- Cleaning the tap housing
- Cleaning the tap aerator
- Adjusting the water temperature
- Cleaning the basket filter
- Replacing the batteries
- Charging the rechargeable battery for generator operation

The operator may perform the following manual settings. → See operation manual 967.455.00.0.

- Activating cleaning mode
- Activating continuous flush

Maintenance performed by skilled persons

The maintenance work described in the following chapters may only be performed by skilled persons.

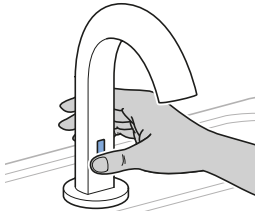
Performing manual settings

Prerequisites:

- The option to change the manual settings must be activated (menu item 33 [SetEn] = [ON]). → See "Making settings using Geberit Service Handy", page 11.
- The manual settings can only be changed within the first 30 minutes after activating the power supply.



Cover approx. 1 cm of the IR window (at the bottom on a deck-mounted tap, on the left on a wall-mounted tap) for the following settings:



Setting the run-on time

When the hand is removed, the water flows for the set time.

Settings:

- factory setting: 2 s
- adjustment range: 0–10 s (= 0–10 flash pulses)

- 1** Cover IR sensor for approx. 2 s until the green LED flashes (1x).
✓ The washbasin tap is in the setting mode.
- 2** Cover IR sensor for approx. 5–6 s until the red LED flashes (1x).
- 3** To set the run-on time, cover the IR sensor until the desired number of red LED flash pulses is reached: 1 flash pulse = 1 second.
✓ The water flows while the IR sensor is covered.
✓ When the IR sensor is released, the green LED flashes (1x) and the water stops. The tap is ready for operation again.

Activating continuous flush

When the continuous flush is activated, the water flows continuously for max. 10 min.

Settings:

- Factory setting: 10 min

- 1** Cover IR sensor for approx. 2 s until the green LED flashes (1x).
✓ The washbasin tap is in the setting mode.
- 2** Cover IR sensor for 3 s.
✓ When the IR sensor is released, the water flows.
✓ The green LED flashes (1x).

- i** The function can be terminated prematurely by covering the IR sensor for approx. 2 s.

Activating interval flush and setting interval

A flush is released at the set interval (see "Setting the flush time for the interval flush").

Settings:

- factory setting: 24 hours
- adjustment range: off, 12, 24, 48 hours (= 1–4 flash pulses)

- 1** Cover IR sensor for approx. 2 seconds until the green LED lights up 1x.
✓ The washbasin tap is in the setting mode.
- 2** Cover IR sensor for approx. 25 seconds until the red LED flashes.
- 3** Cover IR sensor until the desired number of flash pulses is reached: 1 flash pulse = off, 2 flash pulses = 12 hours, 3 flash pulses = 24 hours, 4 flash pulses = 48 hours.
✓ The green LED lights up 1x. The tap is ready for operation again.

- i** The flash pulses after 5 and 10 seconds can be ignored.

Setting the flush time for the interval flush

The water flows for the set flush time when the interval flush is activated.

Settings:

- factory setting: 5 seconds
- adjustment range: 5–200 seconds (= 1–40 flash pulses)

- 1** Cover IR sensor for approx. 2 seconds until the green LED lights up 1x.
✓ The washbasin tap is in the setting mode.
- 2** Cover IR sensor for 3 seconds.
✓ When the IR sensor is released, the water flows.
- 3** To set the new flush time, cover the IR sensor until the desired number of red LED flash pulses is reached: 1 flash pulse = 5 seconds.
✓ While the IR sensor is covered, the water stops.
✓ After the IR sensor is released, the red LED indicates the set flush time by means of flash pulses: 1 flash pulse = 5 seconds.
✓ The green LED lights up 1x. The tap is ready for operation again.

Restarting the control electronics


- 1** Cover IR sensor for approx. 2 seconds until the green LED lights up 1x.
✓ The washbasin tap is in the setting mode.
- 2** Cover IR sensor twice for approx. 0.5 seconds.
✓ The red LED flashes.
- 3** Cover IR sensor for approx. 5–10 seconds until the red LED lights up 4x.
- 4** Remove hand from the detection range of the IR sensor.
✓ The detection range is remeasured.
✓ After the measurement, the green LED lights up 1x. The tap is ready for operation again.

Setting the detection distance of the IR sensor

The detection distance can be set in 5 levels.

Settings:

- factory setting: wall-mounted tap level 5, deck-mounted tap level 4
- adjustment range: level 1 to 5 (=1–5 flash pulses)

- 1** Cover IR sensor for approx. 2 seconds until the green LED lights up 1x.
✓ The washbasin tap is in the setting mode.
 - 2** Cover IR sensor for approx. 0.5 seconds (2x).
✓ The red LED flashes.
 - 3** Cover IR sensor for approx. 15 seconds until the red LED flashes.
 - 4** Cover IR sensor until the desired number of flash pulses is reached: 1 flash pulse = level 1, 2 flash pulses = level 2, etc.
 - 5** Remove hand from the detection range of the IR sensor.
-  The flash pulses after 5 seconds can be ignored.

Making settings using Geberit Service Handy

With the Geberit Service Handy, additional maintenance functions can be performed and individual settings can be made. The numbers and terms in the column "Menu item" correspond to what can be seen on the display of the Geberit Service Handy. Further information can be found in the user manual of the Geberit Service Handy.

Commands				
Menu item [EN] [DE]	Description	Application	Value	Factory setting
20 [Valve] [Ventil]	Switch solenoid valve. The tap flushes until it is switched off again, or for max. 10 min.	<ul style="list-style-type: none"> • To run a function test on the valve • To flush out standing water (stagnation) • To disinfect the line system and the tap (> 3 min at > 70 °C) • For winter emptying 	On = <OK> Off = <OK>	Off
21 [RangeTest] [TestErfas]	Check detection range. The red LED flashes if an object is in the detection range. No flush is actuated. The function is deactivated after 2 min.	<ul style="list-style-type: none"> • For problems with user recognition 	On = <OK> Off = <OK>	Off
22 [ResetSens] [ResetSens]	Recalibrate IR sensor.	<ul style="list-style-type: none"> • In the event of detection malfunctions • In the event of changed environment (e.g. new washbasin) 	Start = <OK>	–
23 [FactorySet] [Werkseinst]	Reset all functions to factory settings.	<ul style="list-style-type: none"> • In the event of malfunctions 	Start = <OK>	–
24 [CleanMode] [Reinigung]	Activate cleaning mode. The flush actuation is suppressed for 2 min. To stop it earlier than this, activate the function again.	<ul style="list-style-type: none"> • To clean the tap and the washbasin without the water running 	Start = <OK> Stop = <OK>	–

Programs				
Menu item [EN] [DE]	Description	Application	Value	Factory setting
30 [MainProgr] [Hauptmenü]	Select operating mode. <ul style="list-style-type: none"> Attendance flush: The tap flushes as long as an object is in the detection range, with a run-on time from menu item 43. Water saver: The tap flushes with a restricted flush time. → See menu item 44. 	<ul style="list-style-type: none"> To select the operating mode 	Presence = [A] Water saver = [B]	[A]
31 [Esaver] [E Sparen]	Activate economy mode. The reaction speed of the IR sensor reduces after the time from menu item 40 [ESaverT] has elapsed. The time starts after the last use.	<ul style="list-style-type: none"> To extend the battery lifetime 	On = [ON] Off = [OFF]	[OFF]
32 [CleanEn] [FreiReini]	Enable the cleaning mode and continuous flush. The operator can perform the "cleaning mode" and "continuous flush" manual functions. → See operation manual 967.455.00.0.	<ul style="list-style-type: none"> To activate the manual cleaning mode and the manual continuous flush 	On = [ON] Off = [OFF] OFF also deactivates menu item 33.	[ON]
33 [SetEn] [SetEn]	Enable manual settings. The manual settings can be made within the first 30 minutes after activating the power supply. → See "Performing manual settings", page 8.	<ul style="list-style-type: none"> To activate the manual settings 	On = [ON] Off = [OFF]	[ON]
34 [IntFlush] [IntervSp]	Activate interval flush. The tap flushes automatically at the interval dictated by the entered value from menu item 42 [IntervalT] for the duration of the entered value from menu item 41 [IntFlushT]. The interval starts after the last use.	<ul style="list-style-type: none"> To improve hygiene To flush out standing water (stagnation) 	On = [ON] Off = [OFF]	On = [OFF]

Settings				
Menu item [EN] [DE]	Description	Application	Adjustment range	Factory setting
40 [ESaverT] [EnerSparZ]	Set the starting time of the economy mode. The reaction speed of the IR sensor reduces after the starting time has elapsed. The function is active when menu item 31 [Esaver] is [ON].	<ul style="list-style-type: none"> To extend the battery lifetime 	6–48 h [...]	24 h [24]
41 [IntFlushT] [IntervSpZ]	Set the flush time for the interval flush. The function is active when menu item 34 [IntFlush] is [ON].	–	5–200 s [...]	5 s [5]
42 [IntervalT] [IntervalZ]	Set the flush interval for the interval flush. The function is active when menu item 34 [IntFlush] is [ON].	–	1–168 h [...]	24 h [24]
43 [RunOnTime] [NachlaufZ]	Set run-on time. The tap continues to flush for the run-on time after the object has been removed from the detection range. The function is active if operating mode [A] is selected in menu item 30 [MainProgr].	<ul style="list-style-type: none"> To improve hygiene To clean utensils 	0–180 s [...]	2 s [2]
44 [WSaverT] [TWSporenZ]	Set the flush time for the "water saver" operating mode. The tap flushes as long as an object is in the detection range but not longer than the entered value. The function is active if operating mode [B] is selected in menu item 30 [MainProgr].	<ul style="list-style-type: none"> To save water To extract a certain amount of water 	3–180 s [...]	10 s [10]
45 [DetectRng] [Erfasdis]	Set detection range. The detection distance can be set to 5 different levels.	<ul style="list-style-type: none"> To optimise user recognition 	1–5 [...] 1 = short distance 5 = big distance	Wall-mounted tap 5 [5] Deck-mounted tap 4 [4]

Settings				
Menu item [EN] [DE]	Description	Application	Adjustment range	Factory setting
46 [SensorUp] [SensOben]	<p>Set mode for upper IR sensor.</p> <ul style="list-style-type: none"> Off: Upper IR sensor is switched off. (It is not possible for both IR sensors to be switched off at the same time.) Static: Upper IR sensor reacts to static or moving objects. Dynamic: Upper IR sensor only reacts to moving objects. Auto: Upper IR sensor switches automatically to the appropriate mode if required. 	<ul style="list-style-type: none"> To improve detection in case of external influences (e.g. highly reflective objects in the room). 	¹⁾ Off = [0] Auto = [1] Dynamic = [2] ²⁾ Off = [0] Static = [1] Dynamic = [2] Auto = [3]	¹⁾ Auto [1] ²⁾ Auto [3]
47 [SensorLow] [SensUnten]	<p>Set mode for lower IR sensor.</p> <ul style="list-style-type: none"> Off: Lower IR sensor is switched off. (It is not possible for both IR sensors to be switched off at the same time.) Static: Lower IR sensor reacts to static or moving objects. Dynamic: Lower IR sensor only reacts to moving objects. Auto: Lower IR sensor switches automatically to the appropriate mode if required. 	<ul style="list-style-type: none"> To improve detection in case of external influences (e.g. highly reflective objects in the room). 	¹⁾ Off = [0] Auto = [1] Dynamic = [2] ²⁾ Off = [0] Static = [1] Dynamic = [2] Auto = [3]	¹⁾ Auto [1] ²⁾ Auto [3]
48 ²⁾ [BasinDet] [BeckenDet]	<p>Set mode for highly reflective washbasins.</p> <ul style="list-style-type: none"> Default: The IR sensors detect objects when using standard ceramic washbasins. Auto: The IR sensors switch automatically to the appropriate mode if required. Highly reflective: The IR sensors detect objects when using highly reflective washbasins. 	<ul style="list-style-type: none"> To improve detection in case of highly reflective washbasins (e.g. mirror-polished washbasins made of stainless steel). 	Default = [0] Auto = [1] Highly reflective = [2]	Auto [1]

¹⁾ Valid up to software version 1.21, → see menu item 62.

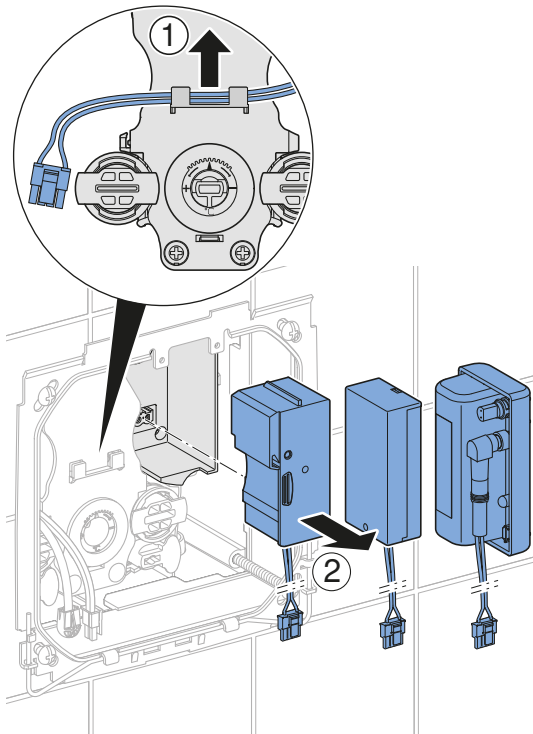
²⁾ Valid as of software version 1.24, → see menu item 62.

Counters		
Menu item [EN] [DE]	Description	Version
50 [Days?] [SumBetrT?]	Total number of days of operation. Displays the number of days of operation since commissioning.	[...] days
51 [Uses?] [SumBenut?]	Total number of uses. Displays the number of uses since commissioning.	[...] uses
52 [IntFlush?] [SumIntSp?]	Total number of interval flushes. Displays the number of interval flushes since commissioning.	[...] flushes
53 [↔ Days] [↔ SumBetrT]	Number of days of operation power-on. Indicates the number of days of operation since the last switch-on.	[...] days of operation
54 [↔ Uses] [↔ SumBenut]	Number of uses power-on. Indicates the number of uses since the last switch-on.	[...] uses
55 [↔ IntFlush] [↔ SumIntSp]	Number of interval flushes power-on. Indicates the number of interval flushes since the last switch-on.	[...] flushes

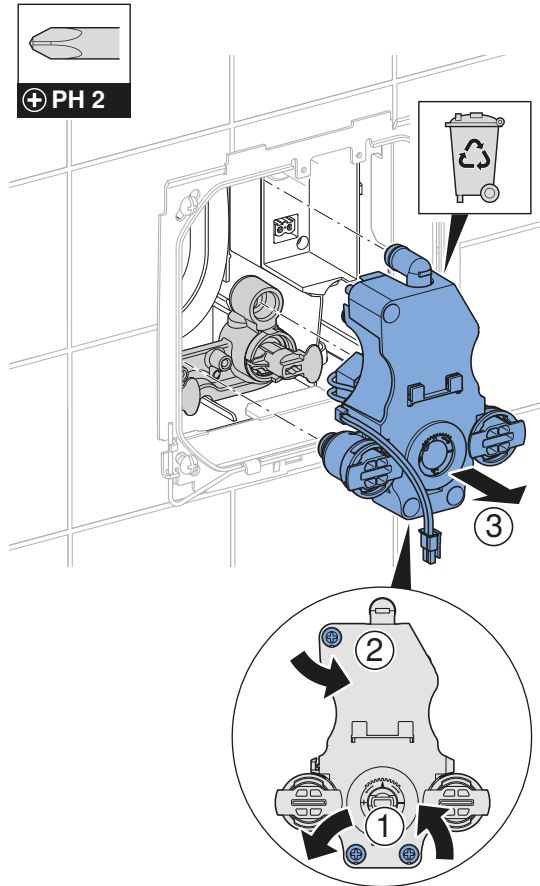
Device info		
Menu item [EN] [DE]	Description	Version
60 [TypeNoS] [TypeNoS]	IR sensor article number. Indicates the article number of the IR sensor.	[...]
61 [TypeNoC] [TypeNoC]	Control electronics article number. Indicates the article number of the control electronics.	[...]
62 [SWVersion] [SWVersion]	Software version. Indicates the software version of the control electronics (e.g. [0312] = version 3.12).	[...] XXZZ
63 [SerialNoS] [SerialNoS]	IR sensor serial number. Indicates the serial number of the IR sensor.	[...]
64 [SerialNoC] [SerialNoC]	Control electronics serial number. Indicates the serial number of the control electronics.	[...]
65 [ManufDatS] [ManufDatS]	IR sensor manufacturing date. Indicates the manufacturing date of the IR sensor (e.g. [101216] = 10 December 2016).	[...] DDMMYY
66 [ManufDatC] [ManufDatC]	Control electronics manufacturing date. Indicates the manufacturing date of the control electronics (e.g. [101216] = 10 December 2016).	[...] DDMMYY
67 [TypePower] [Netz/Batt]	Type of power supply. Indicates whether it is a mains-operated (AC) or a battery-operated (DC) or generator-operated (DC) washbasin tap.	DC = [0] AC = [1]
68 [Battery%] [Batterie%]	Battery capacity. Displays the current battery capacity in %. At 10%, replace batteries or charge rechargeable battery.	[...] %

Replacing the functional unit

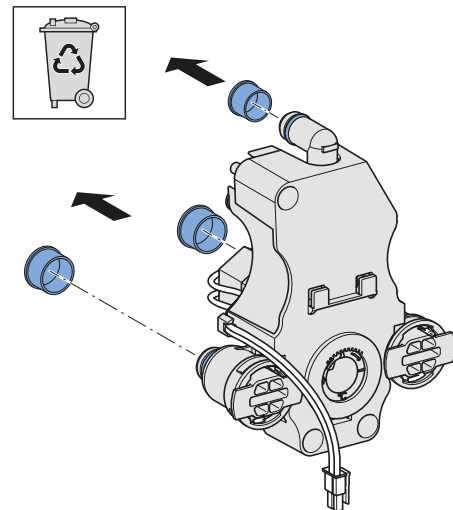
- 1** Detach the cover plate. → See illustration sequence **1**, page 37.
- 2** Close both shut-off units or angle stop valves. → See illustration sequence **2**, page 38.
- 3** Release the flush to relieve the pressure.
- 4** Demount the control electronics.
- 5** Disconnect all cables.
- 6** Remove the power supply cable from its bracket and demount the power supply unit, battery compartment or rechargeable battery.



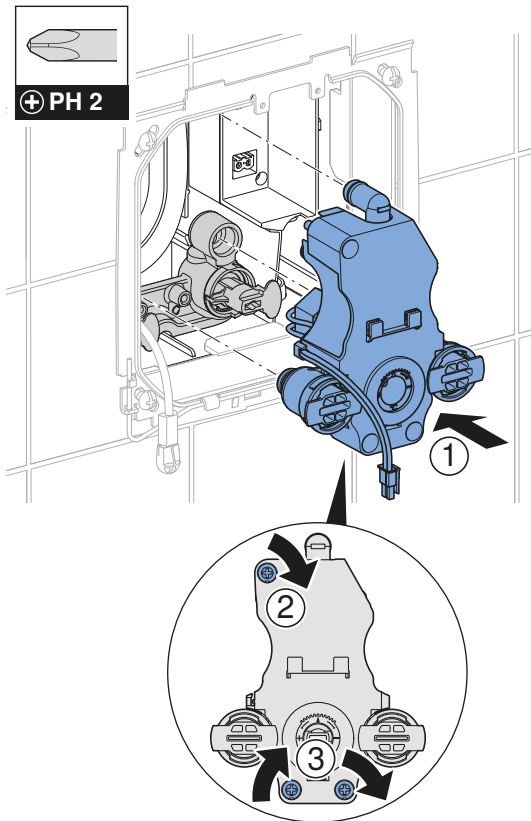
- 7** Demount and dispose of the functional unit.



- 8** Remove protective caps and lubricate O-rings.



9 Mount new functional unit.



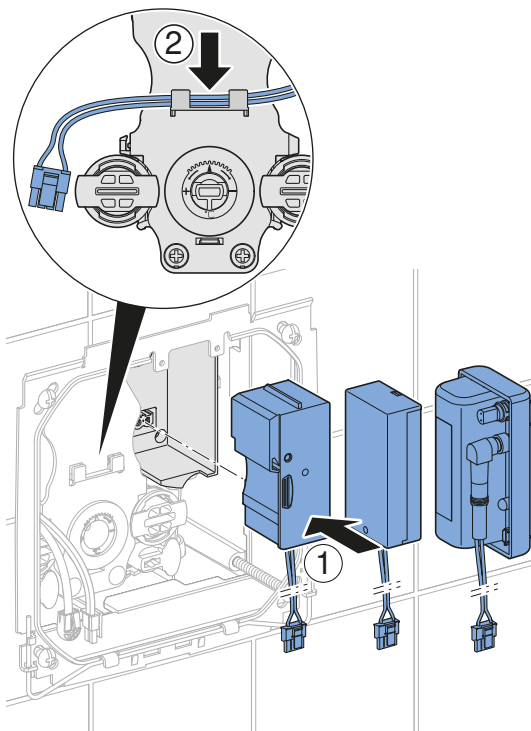
12 Mount the control electronics.

13 Open both shut-off units or angle stop valves.

14 Test the function of the tap.

15 Mount the cover plate. → See illustration sequence **4**, page 40.

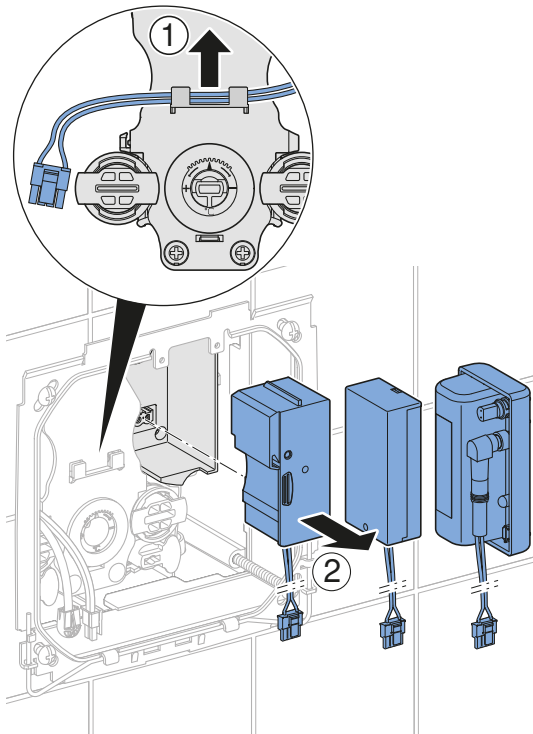
10 Mount the power supply unit, battery compartment or rechargeable battery and snap the power supply cable into the bracket.



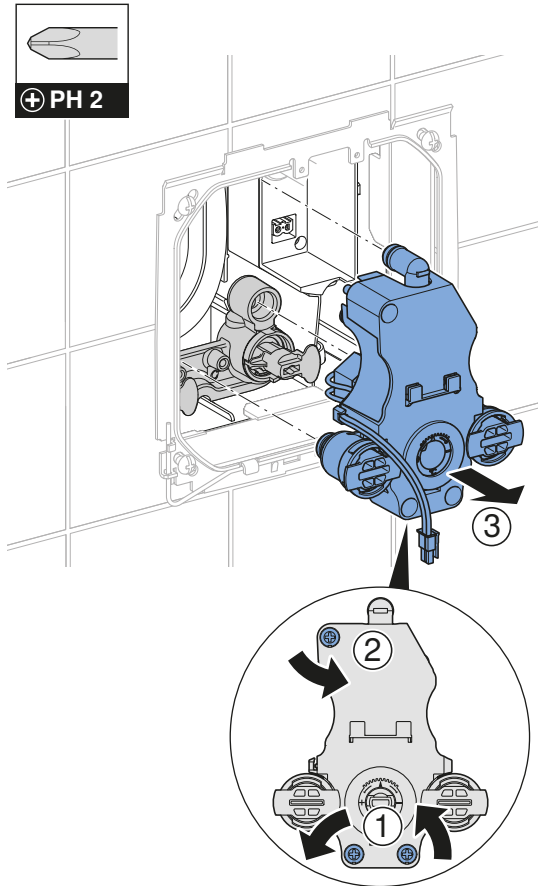
11 Connect the cable to the control electronics.
→ See illustration sequence **3**, page 39.

Replace the solenoid valve

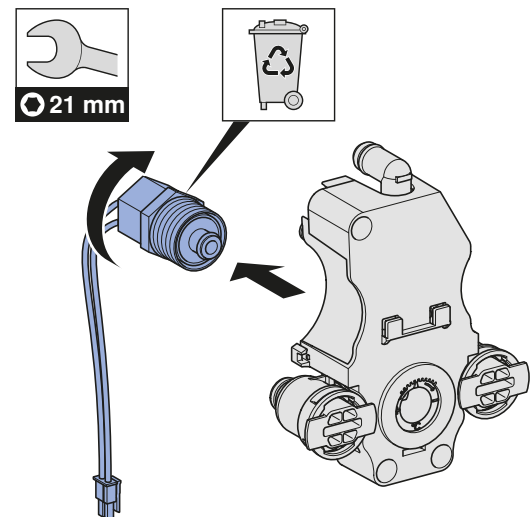
- 1** Detach the cover plate. → See illustration sequence **1**, page 37.
- 2** Close both shut-off units or angle stop valves. → See illustration sequence **2**, page 38.
- 3** Release the flush to relieve the pressure.
- 4** Demount the control electronics.
- 5** Disconnect all cables.
- 6** Remove the power supply cable from its bracket and demount the power supply unit, battery compartment or rechargeable battery.



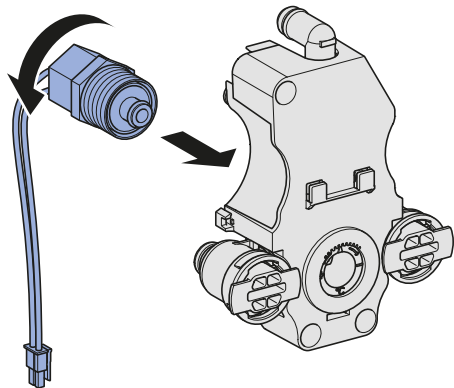
- 7** Demount the functional unit.



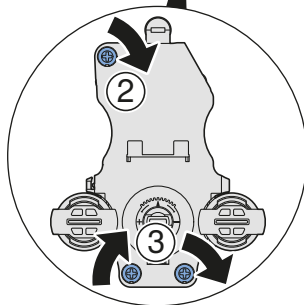
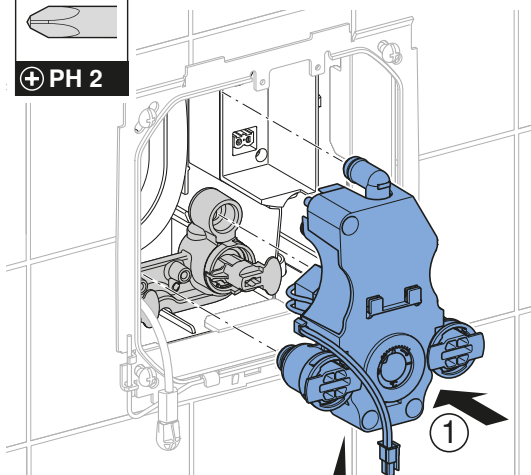
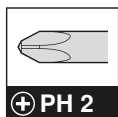
- 8** Demount and dispose of the solenoid valve.



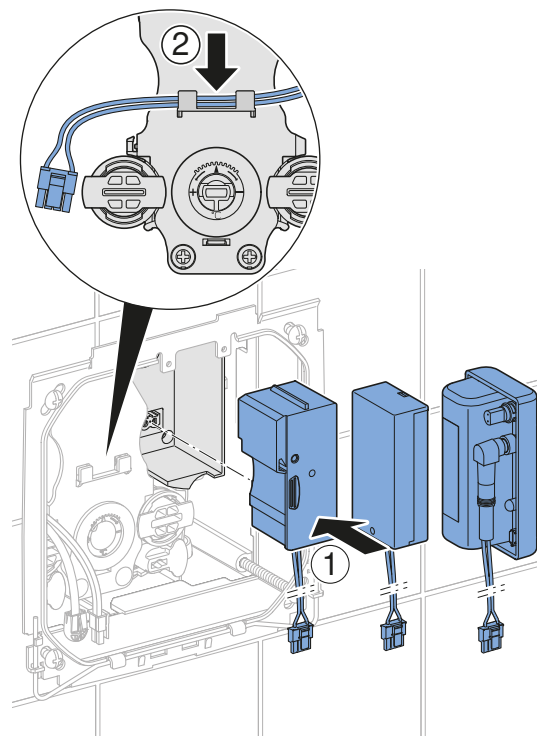
9 Mount the new solenoid valve.



10 Mount the functional unit.



11 Mount the power supply unit, battery compartment or rechargeable battery and snap the power supply cable into the bracket.



12 Connect the cable to the control electronics. → See illustration sequence **3**, page 39.

13 Mount the control electronics.

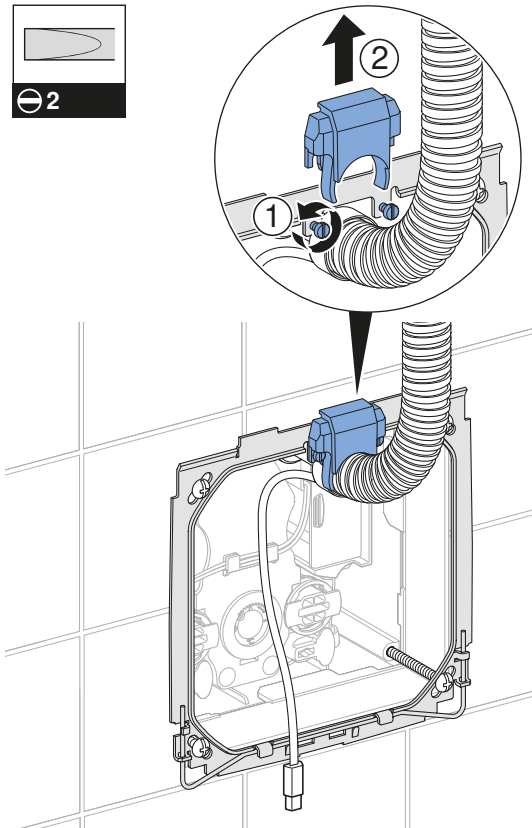
14 Open both shut-off units or angle stop valves.

15 Test the function of the tap.

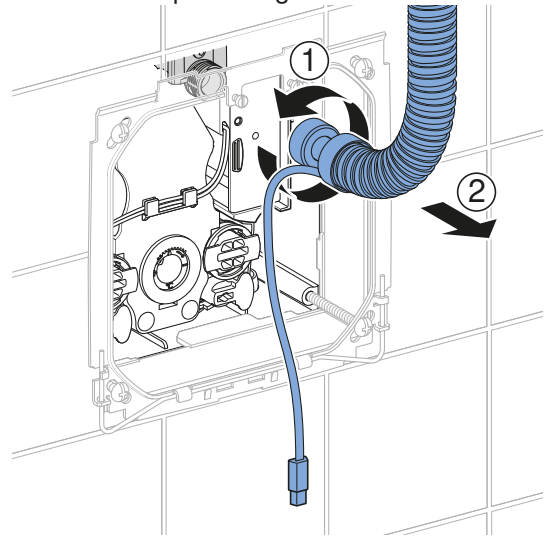
16 Mount the cover plate. → See illustration sequence **4**, page 40.

Replacing the IR sensor of the deck-mounted tap

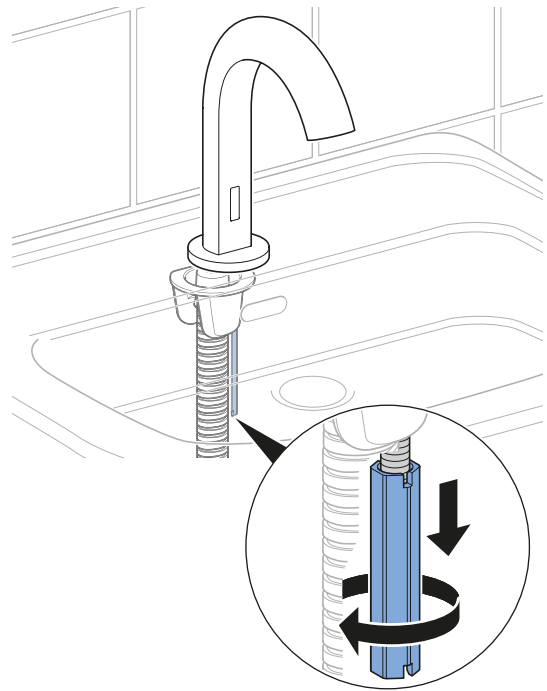
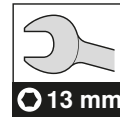
- 1** Detach the cover plate. → See illustration sequence **1**, page 37.
- 2** Close both shut-off units or angle stop valves. → See illustration sequence **2**, page 38.
- 3** Release the flush to relieve the pressure.
- 4** Demount the control electronics.
- 5** Disconnect all cables.
- 6** Loosen the screws of the hose holder and demount it.



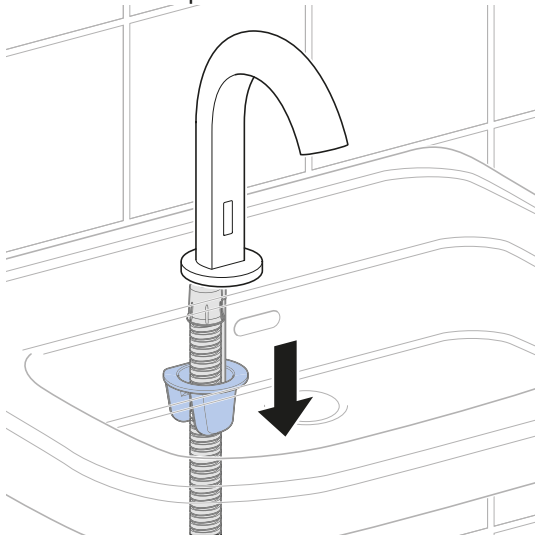
- 7** Demount the protecting hose.



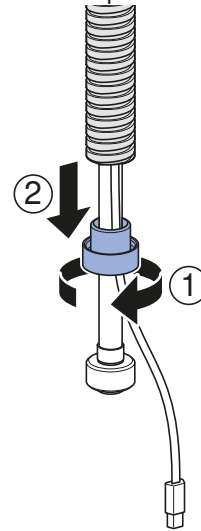
- 8** Unscrew the long nut.



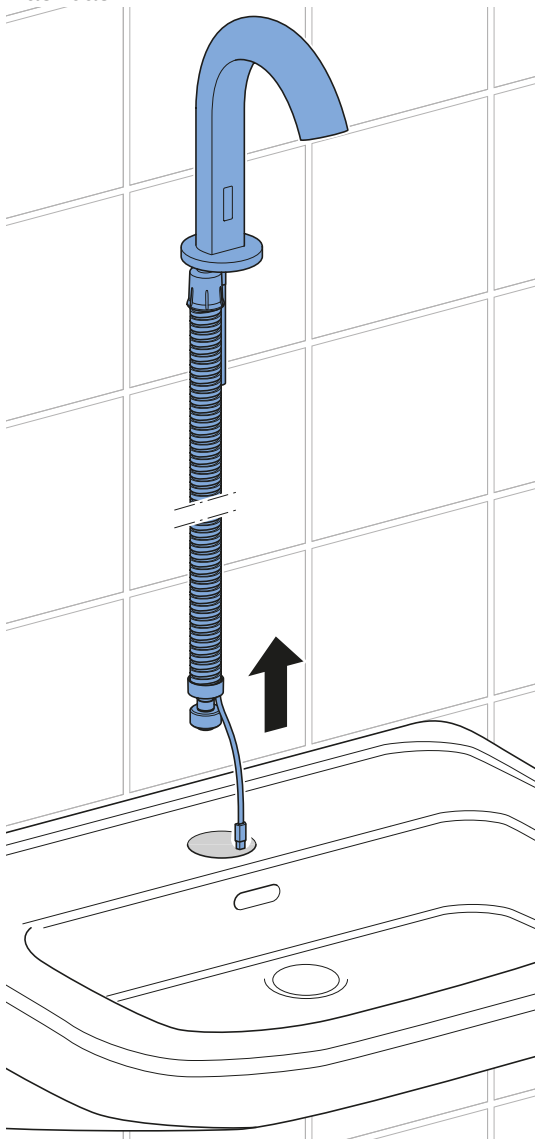
9 Demount the tap bracket.



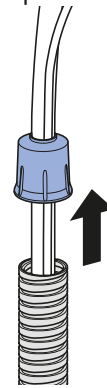
11 Unscrew the lower cap.



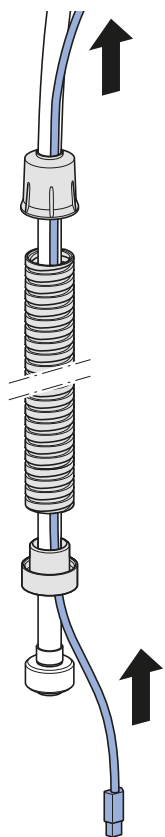
10 Detach the tap with protecting hose from the washbasin.



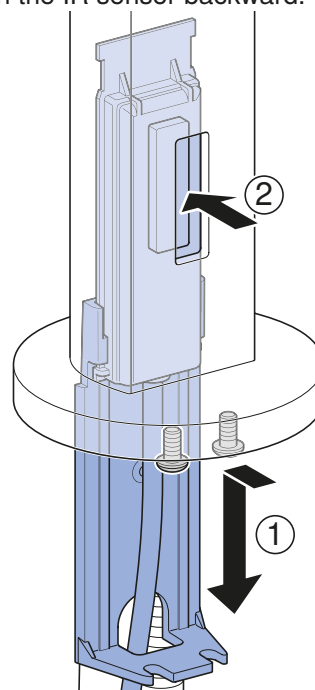
12 Detach the upper cap.



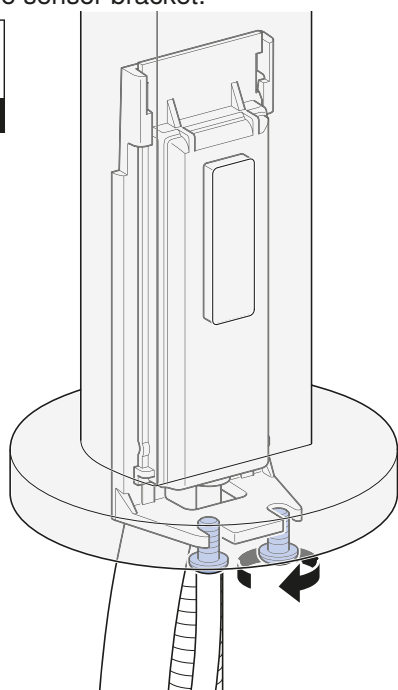
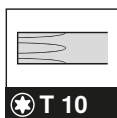
- 13** Pull out the sensor cable from the protecting hose.



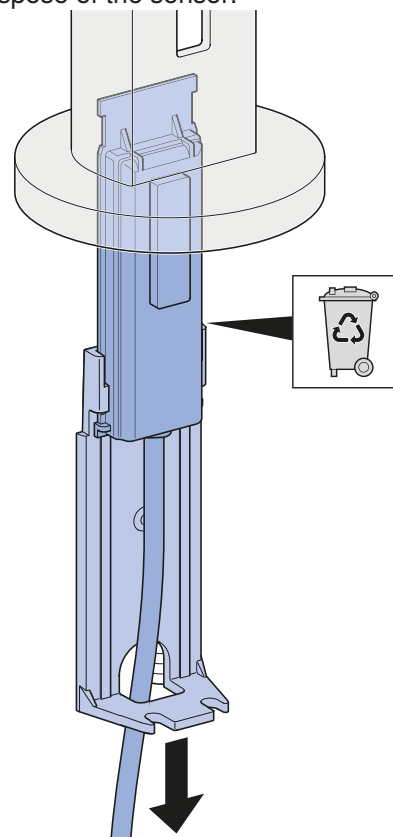
- 15** Pull out the lower part of the sensor bracket and push the IR sensor backward.



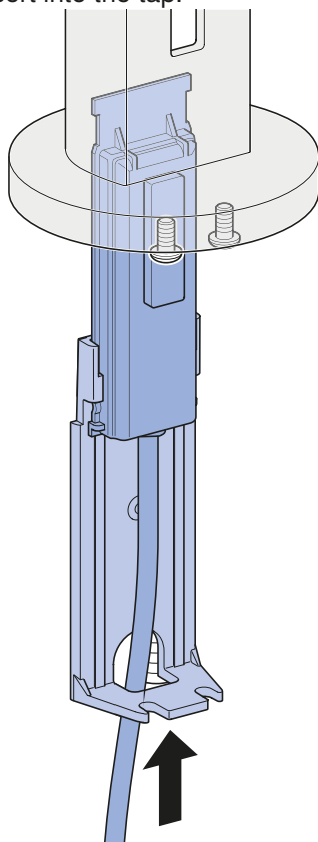
- 14** Loosen the sensor bracket.



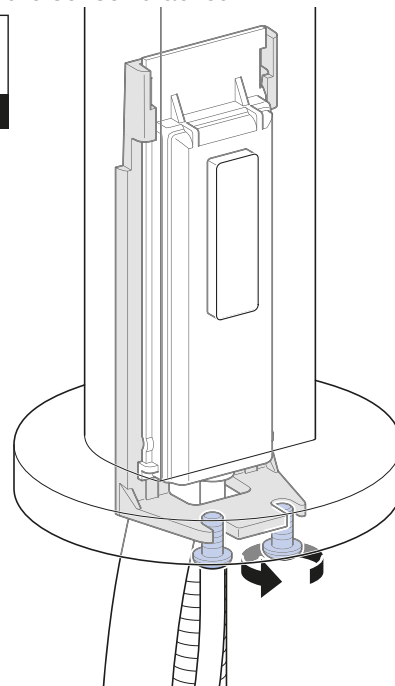
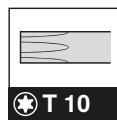
- 16** Pull the sensor bracket downwards and out and dispose of the sensor.



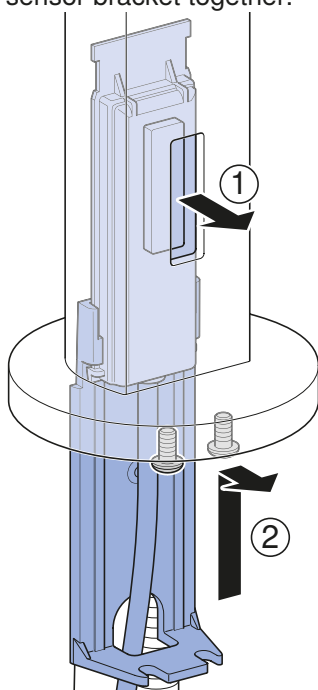
- 17** Mount a new sensor onto the sensor bracket and insert into the tap.



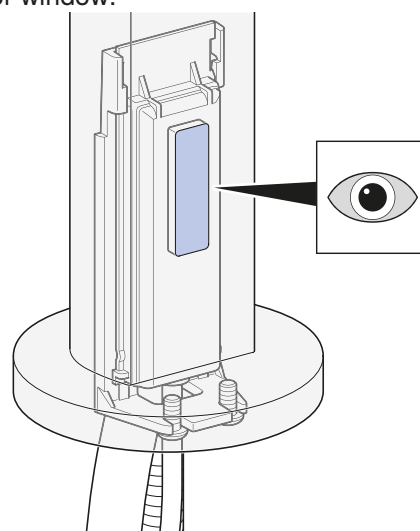
- 19** Screw on the sensor bracket.



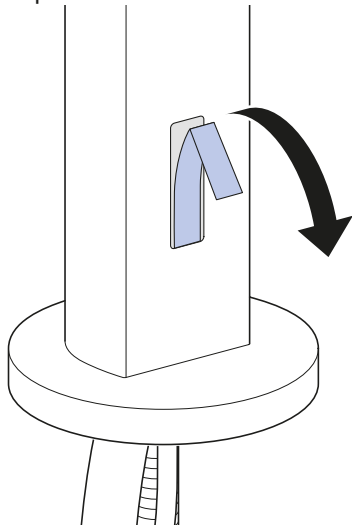
- 18** Position the IR sensor in the window and push the sensor bracket together.



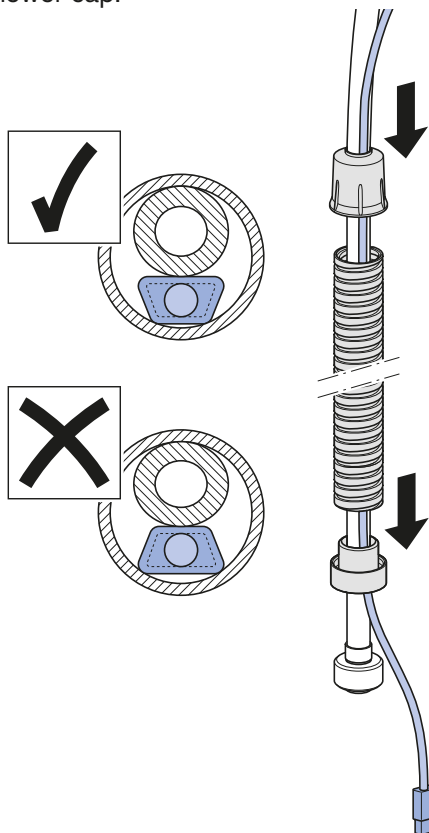
- 20** Check the position of the IR sensor in the sensor window.



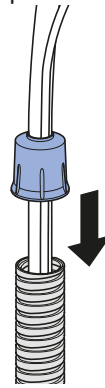
21 Remove protective foil.



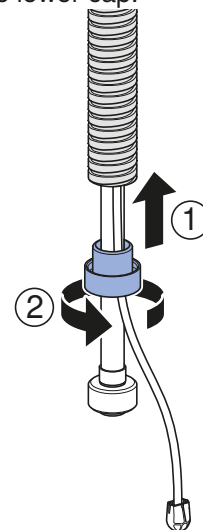
22 Insert the sensor cable into the protecting hose. Make sure you feed it through the lower cap.



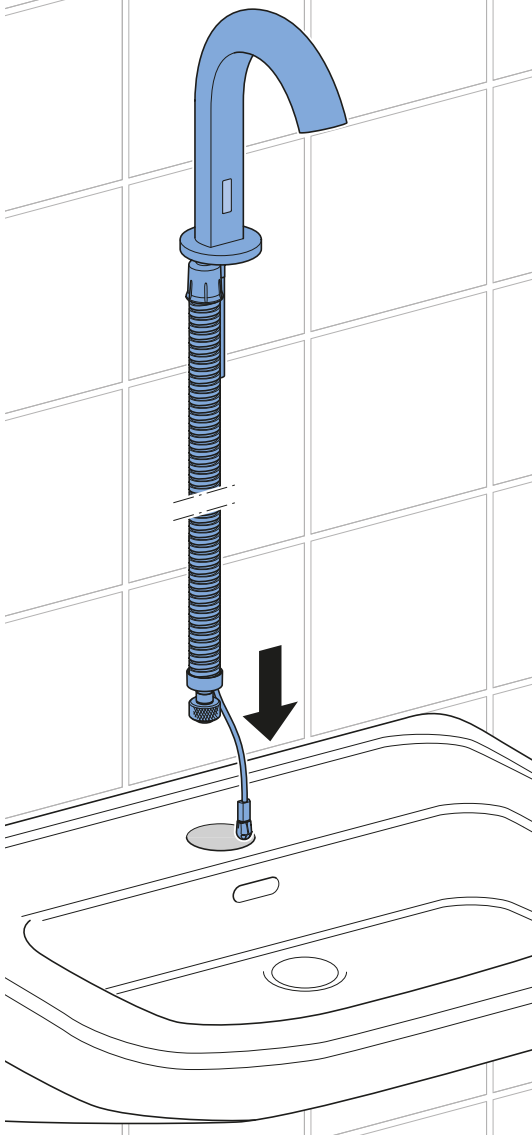
23 Mount the upper cap.



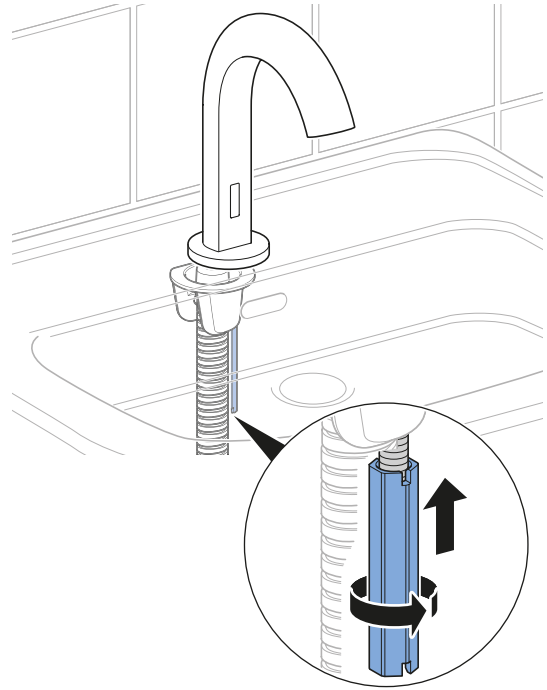
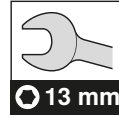
24 Screw on the lower cap.



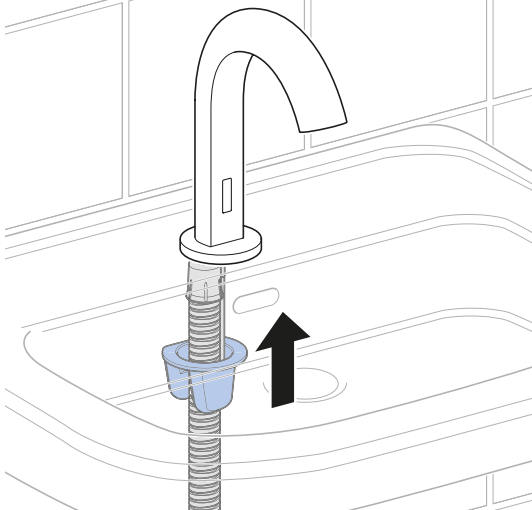
25 Mount the tap onto the washbasin.



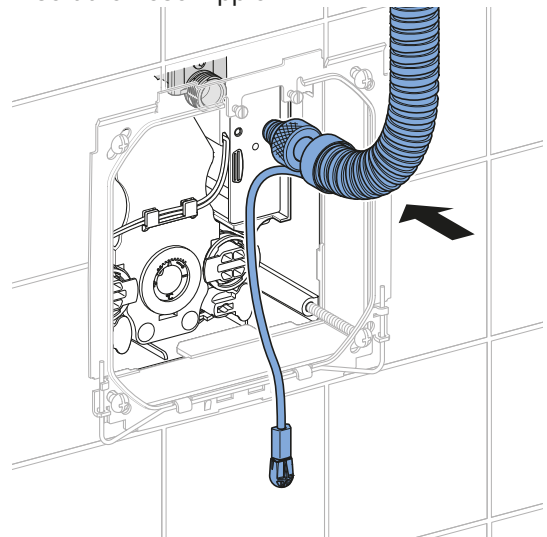
27 Screw on the tap bracket with the long nut.



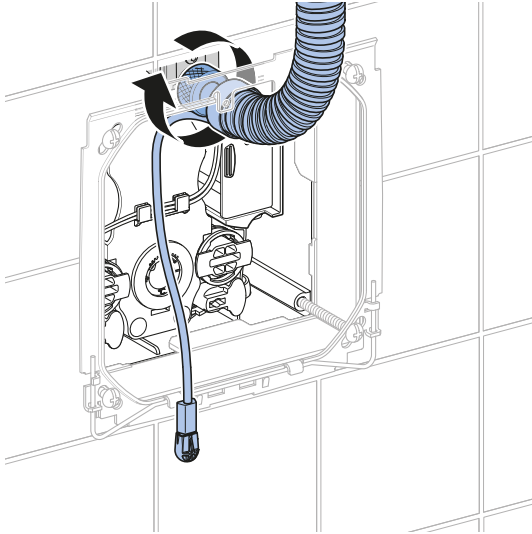
26 Mount the tap bracket from below.



28 Insert the hose nipple.

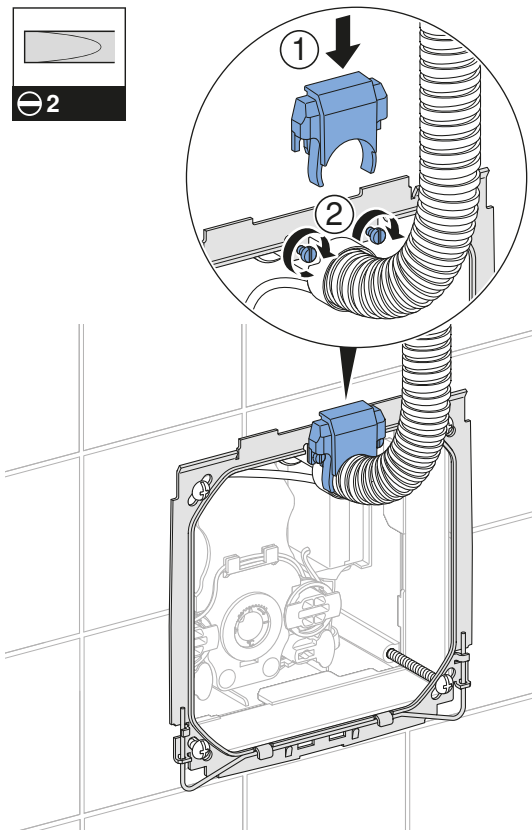


29 Connect the connection hose.



35 Mount the cover plate. → See illustration sequence **4**, page 40.

30 Secure the protecting hose with the bracket.



31 Connect the cable to the control electronics.
→ See illustration sequence **3**, page 39.

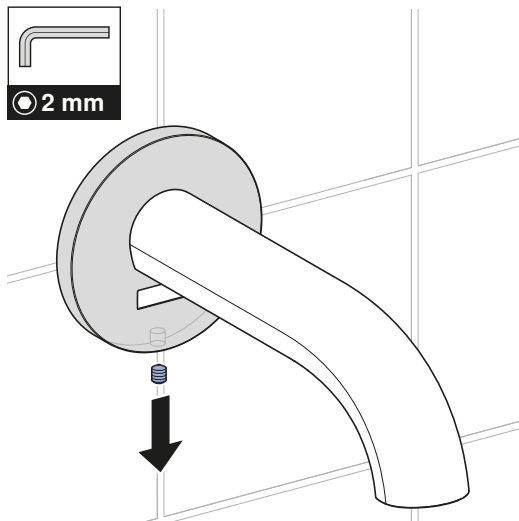
32 Mount the control electronics.

33 Open both shut-off units or angle stop valves.

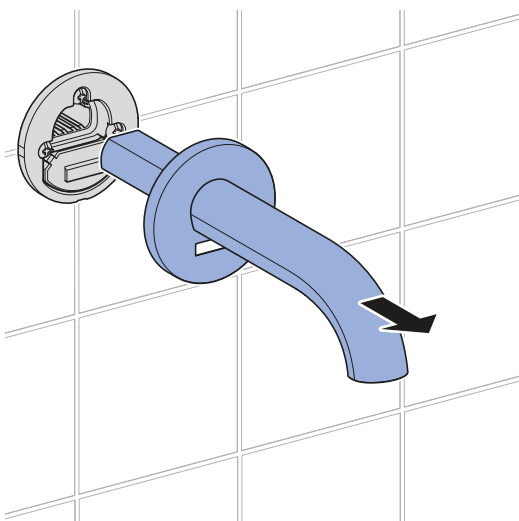
34 Test the function of the tap.

Replacing the IR sensor of the wall-mounted tap

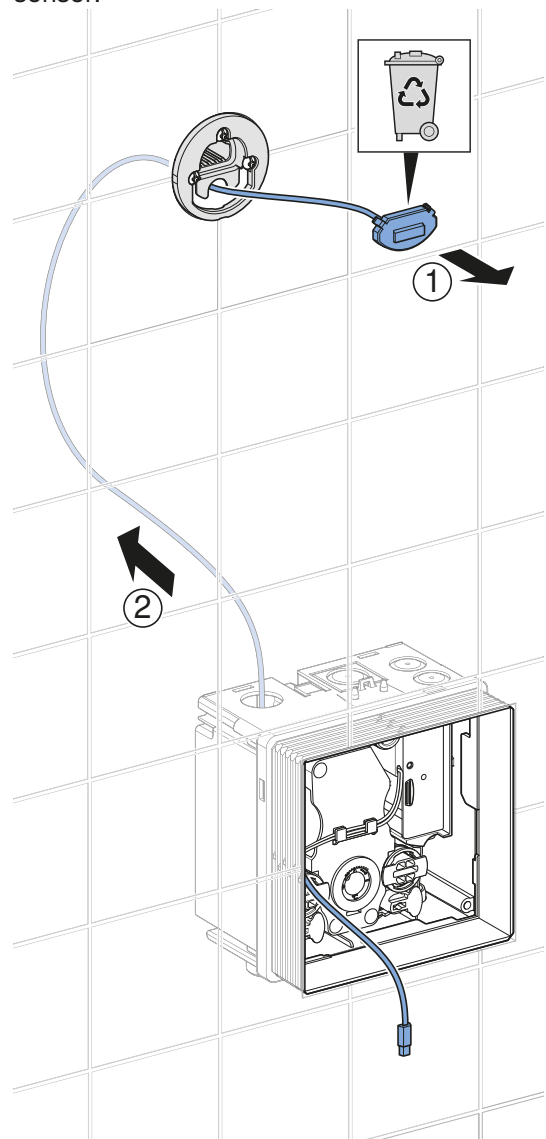
- 1** Detach the cover plate. → See illustration sequence **1**, page 37.
- 2** Close both shut-off units or angle stop valves. → See illustration sequence **2**, page 38.
- 3** Release the flush to relieve the pressure.
- 4** Demount the control electronics.
- 5** Disconnect all cables.
- 6** Loosen the fastening screw of the tap.



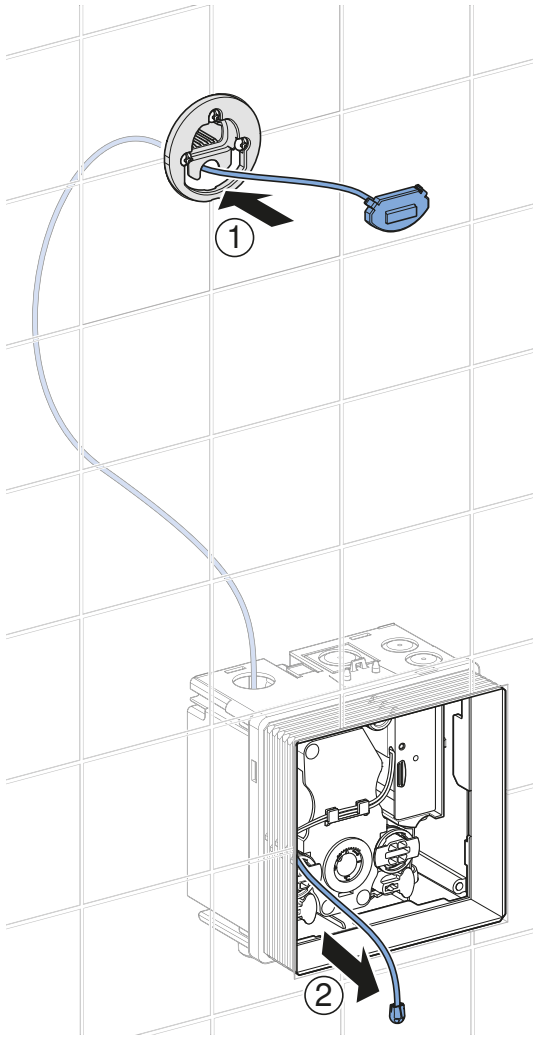
- 7** Detach the tap.



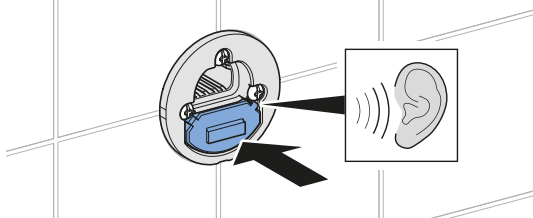
- 8** Pull out the sensor cable and dispose of the sensor.



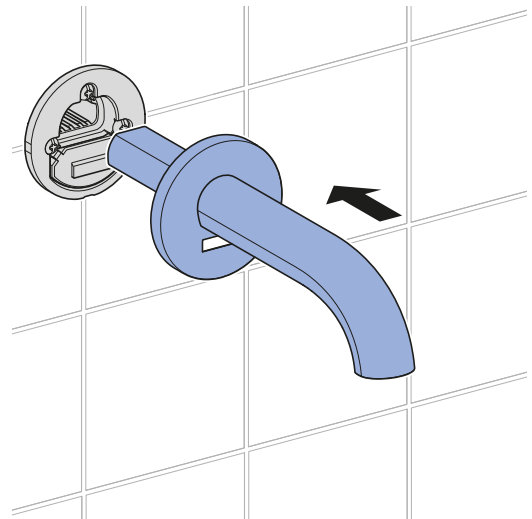
9 Draw in the sensor cable of the new sensor.



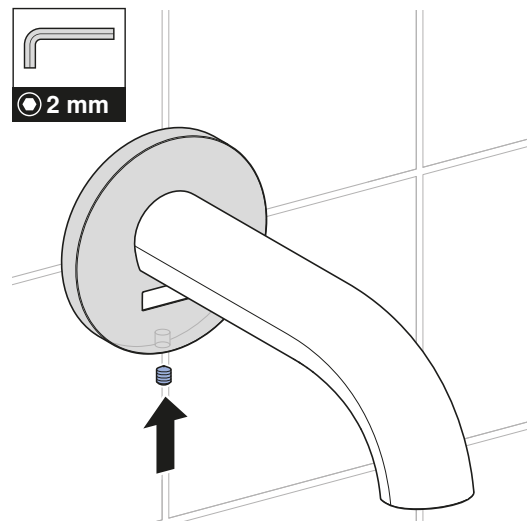
10 Snap the sensor into the sensor bracket.



11 Mount the tap.



12 Screw on the tap.



13 Connect the cable to the control electronics.
→ See illustration sequence **3**, page 39.

14 Mount the control electronics.

15 Open both shut-off units or angle stop valves.

16 Test the function of the tap.

17 Mount the cover plate. → See illustration sequence **4**, page 40.

Replacing the connection hose of the deck-mounted tap

The connection hose of the deck-mounted tap must only be replaced if there are imperative reasons to do so, for example contamination of the supply pipes. The installation manual 967.768.00.0 describes how to replace the connection hose.

- i** The connection hose must be replaced by a skilled person from the responsible Geberit sales company.

Replacing the connection hose of the wall-mounted tap

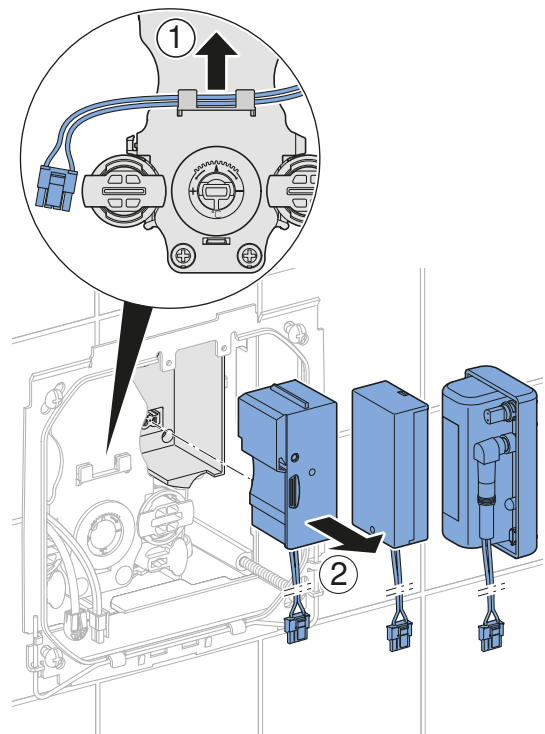
The connection hose of the wall-mounted tap must only be replaced if there are imperative reasons to do so, for example contamination of the supply pipes.

- i** The connection hose must be replaced by a skilled person from the responsible Geberit sales company.

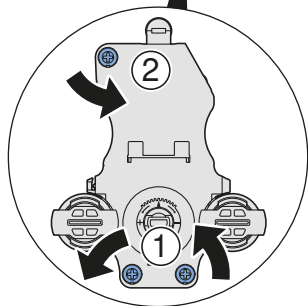
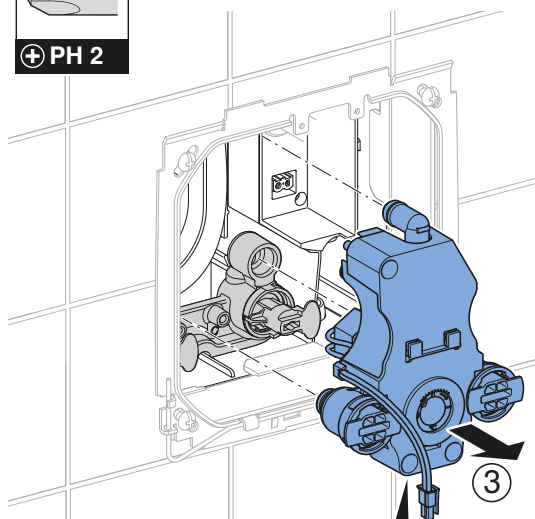
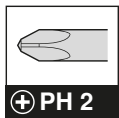
Demounting the connection hose of the wall-mounted tap

- 1** Detach the cover plate. → See illustration sequence **1**, page 37.
- 2** Close both shut-off units or angle stop valves. → See illustration sequence **2**, page 38.
- 3** Release the flush to relieve the pressure.
- 4** Demount the control electronics.
- 5** Disconnect all cables.

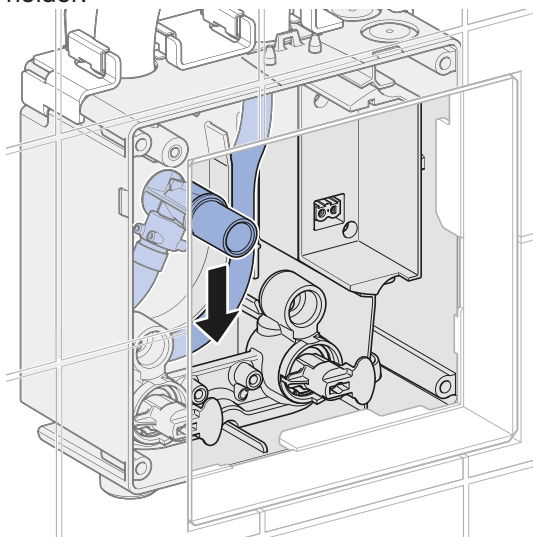
- 6** Remove the power supply cable from its bracket and demount the power supply unit, battery compartment or rechargeable battery.



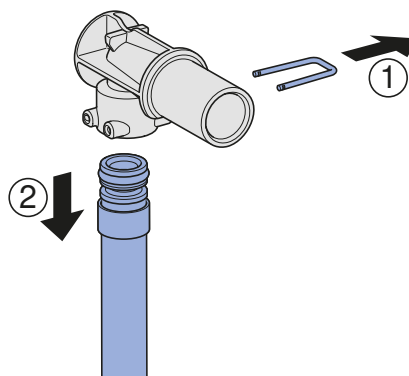
7 Demount the functional unit.



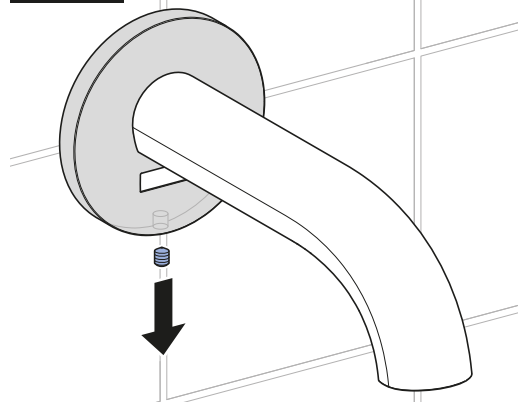
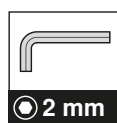
8 Remove the connection bend from the hose holder.



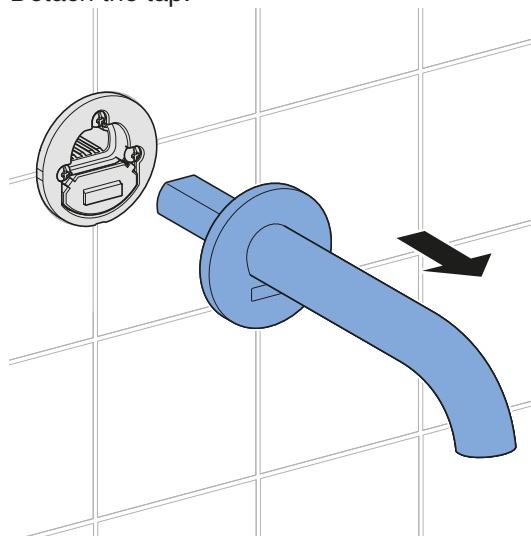
9 Remove the safety pin and separate the connection bend from the connection hose.



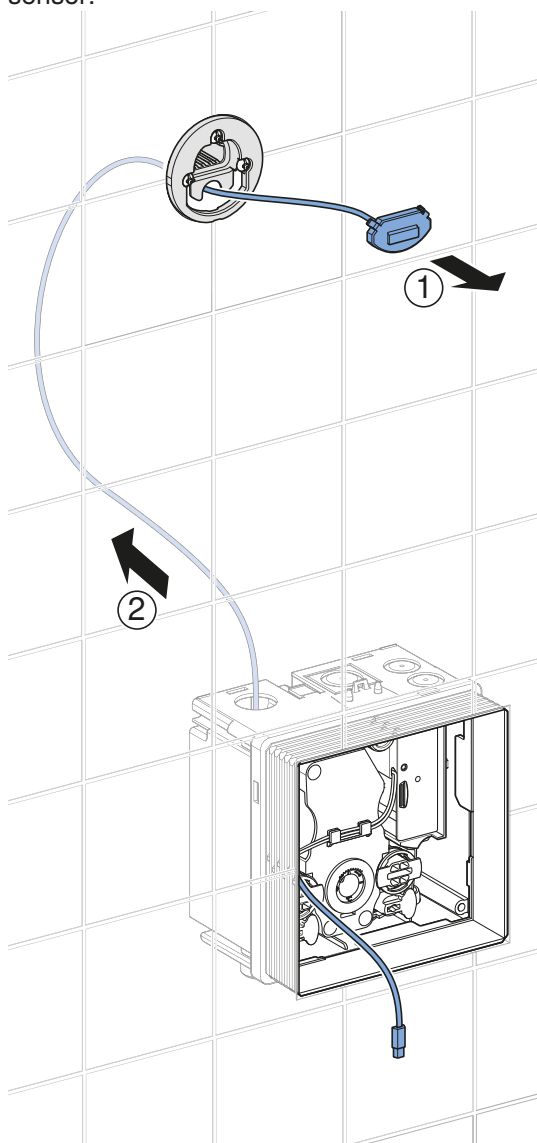
10 Loosen the fastening screws.



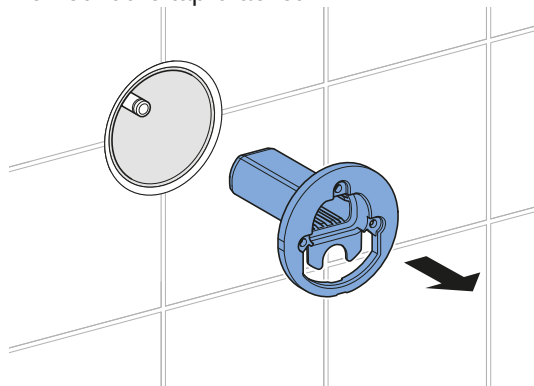
11 Detach the tap.



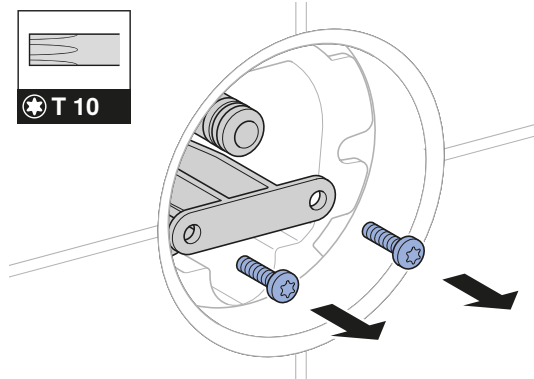
12 Pull out the sensor cable and dispose of the sensor.



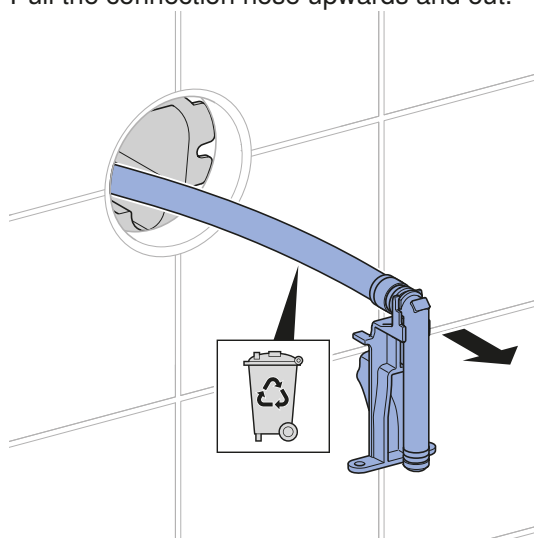
14 Demount the tap bracket.



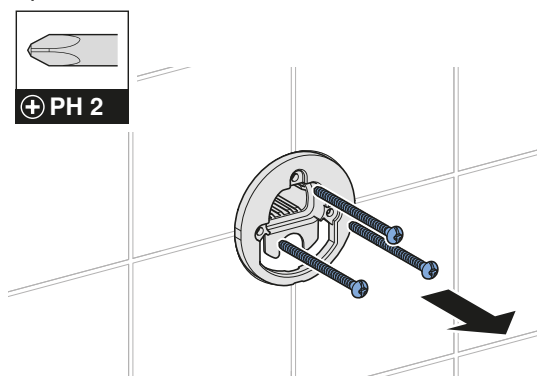
15 Unscrew the hose holder.



16 Pull the connection hose upwards and out.

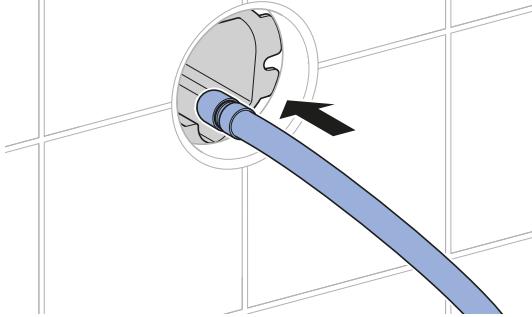


13 Unscrew and remove the screws from the tap bracket.

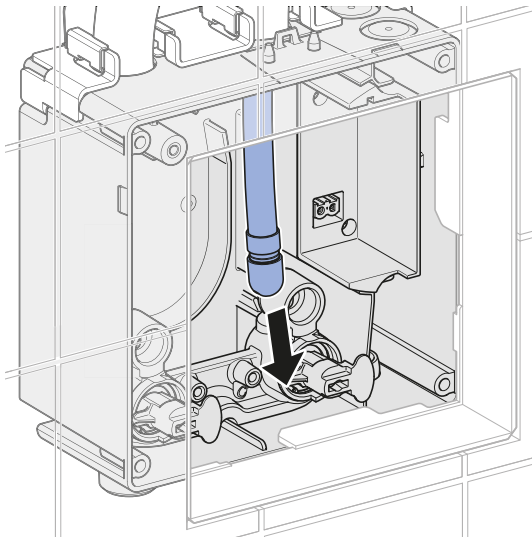


Mounting the connection hose of the wall-mounted tap

- 1** Insert the new connection hose from above.



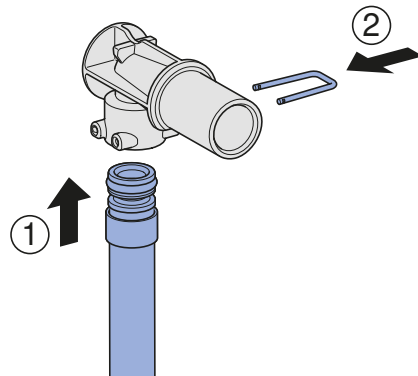
- 2** Pull the connection hose downwards and out.



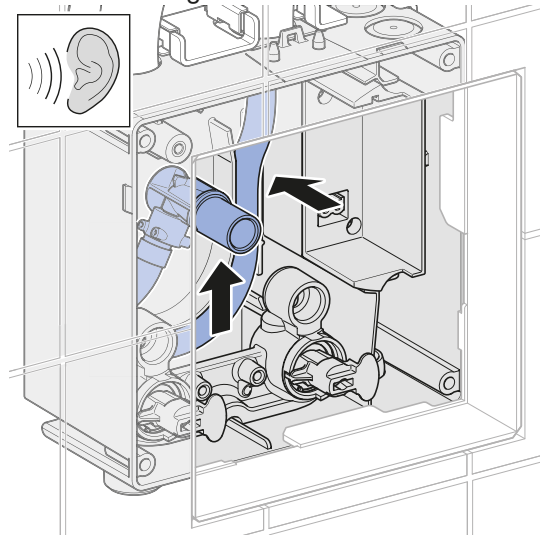
- 3** Detach the protective cap.



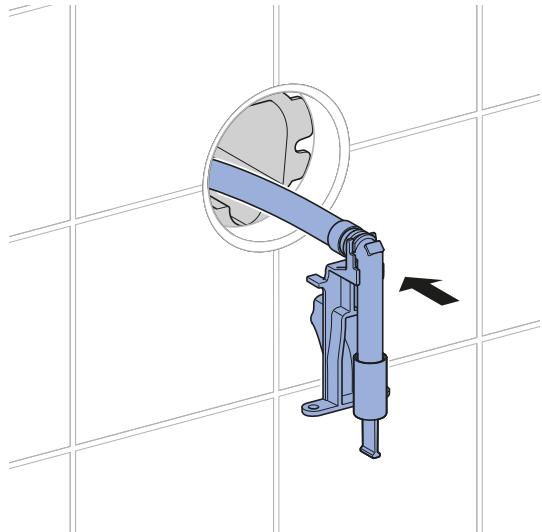
- 4** Connect the connection bend with the connection hose and insert the safety pin.



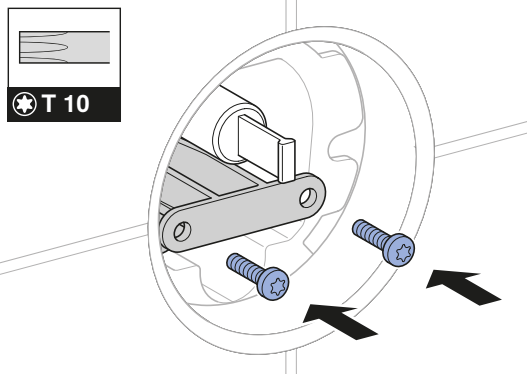
- 5** Snap the connection bend into the hose holder and insert the connection hose into the hose routing.



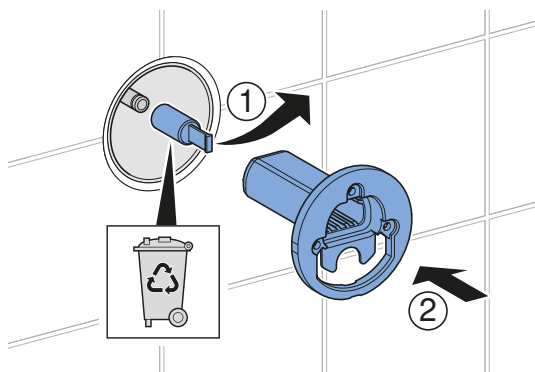
- 6** Insert the hose holder with the connection hose.



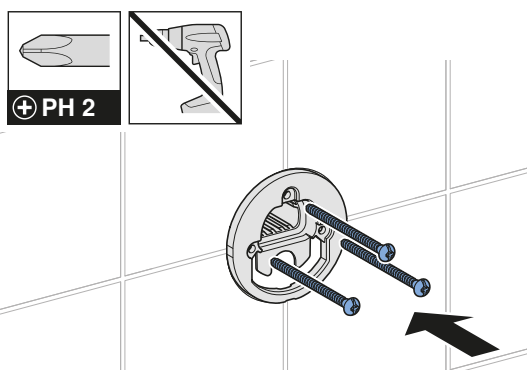
7 Screw on the hose holder.



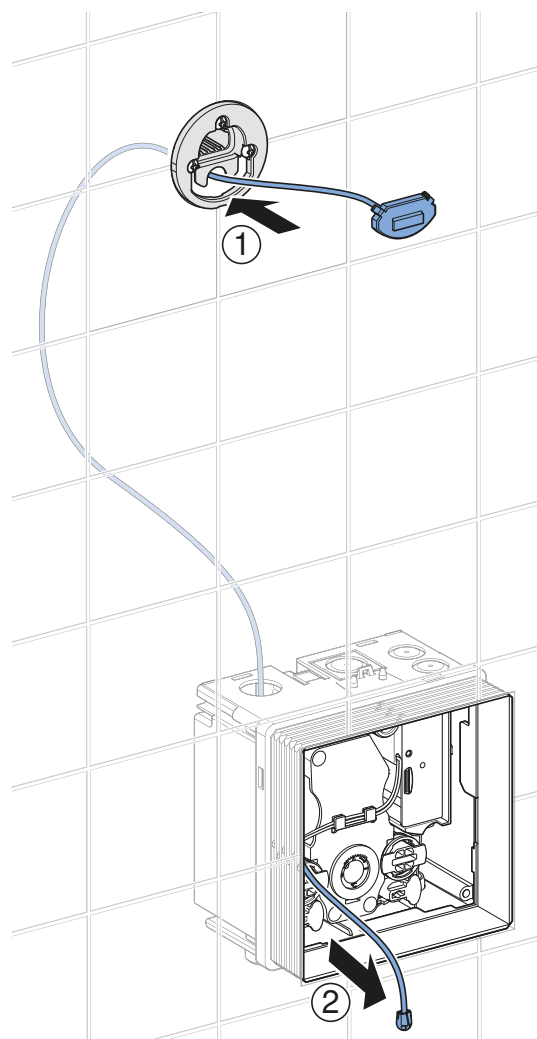
8 Mount the tap bracket.



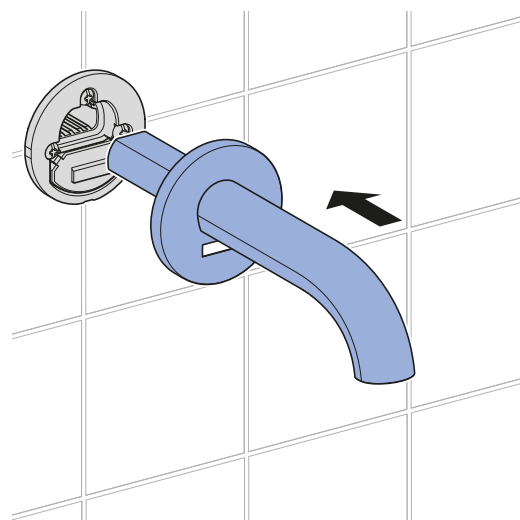
9 Screw on the tap bracket.



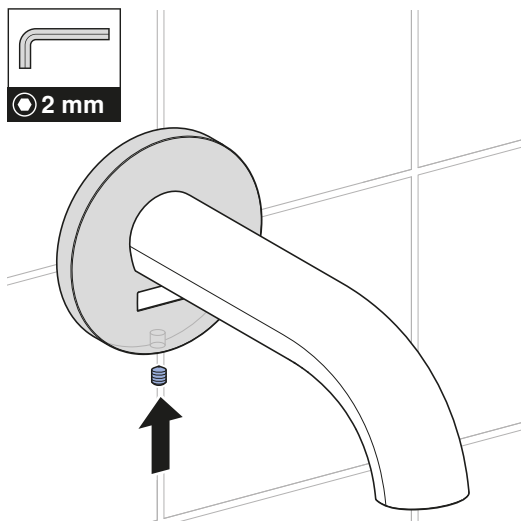
10 Draw in the sensor cable of the new sensor.



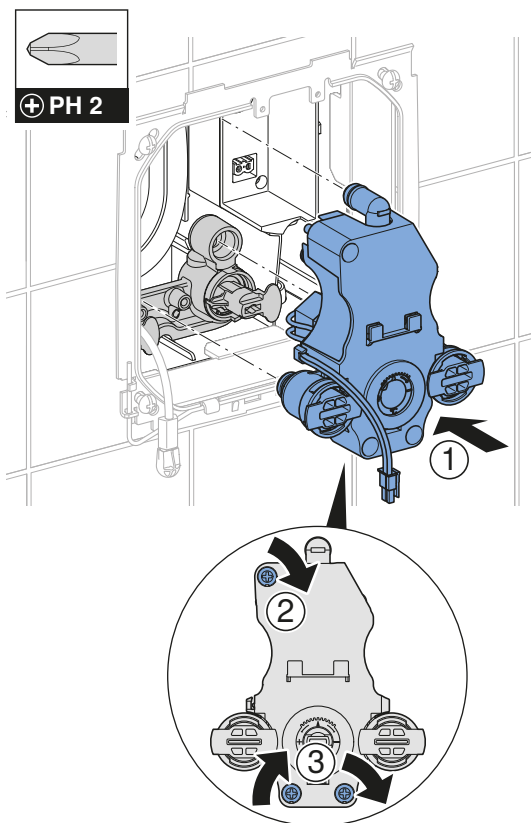
11 Mount the tap.



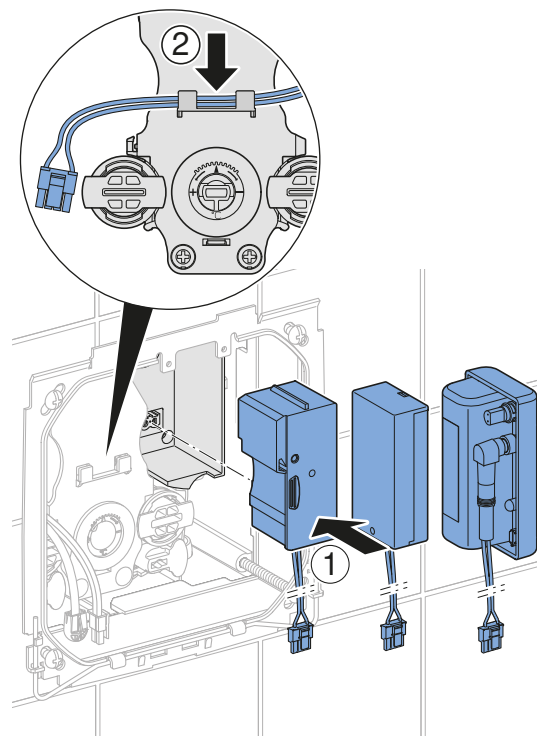
12 Screw on the tap.



13 Mount the functional unit.



14 Mount the power supply unit, battery compartment or rechargeable battery and snap the power supply cable into the bracket.



15 Connect the cable to the control electronics.
→ See illustration sequence **3**, page 39.

16 Mount the control electronics.

17 Open both shut-off units or angle stop valves.

18 Test the function of the tap.

19 Mount the cover plate. → See illustration sequence **4**, page 40.

Disposal

Constituents

This product meets the requirements of Directive 2011/65/EU (RoHS) (restriction of the use of certain hazardous substances in electrical and electronic equipment).

Disposal of old electrical and electronic equipment

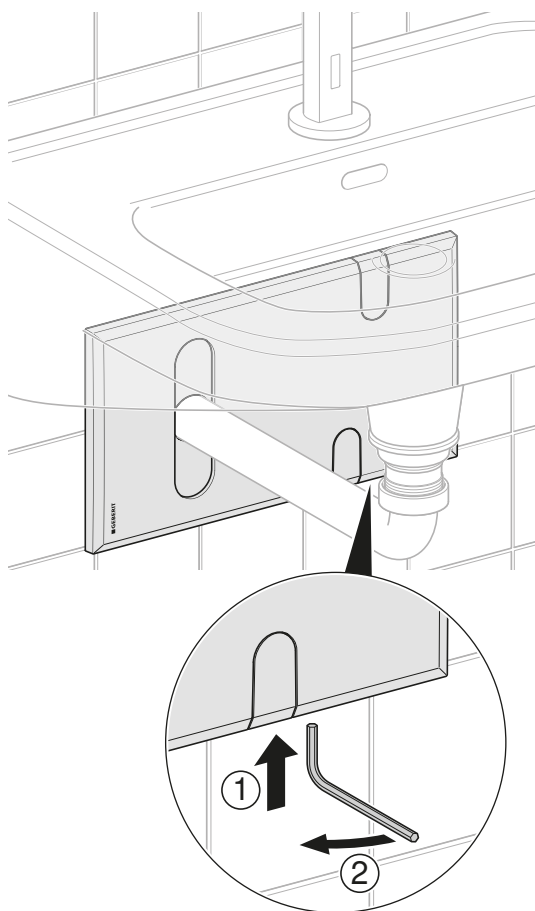
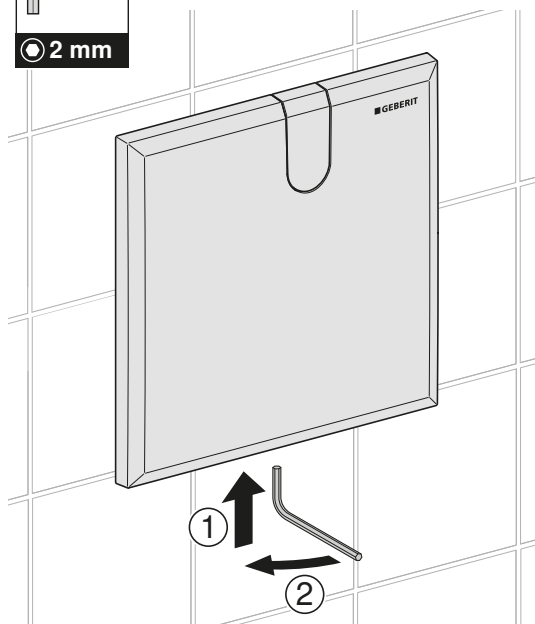
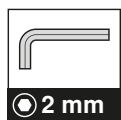


In accordance with Directive 2012/19/EU (WEEE - Waste Electrical and Electronic Equipment) manufacturers of electrical equipment are obliged to take back old equipment and to dispose of it appropriately. The symbol indicates that the product cannot be disposed of with non-recyclable waste. Old equipment should be returned directly to Geberit where it will be disposed of appropriately. Addresses to which equipment can be returned can be requested from the relevant Geberit sales company.

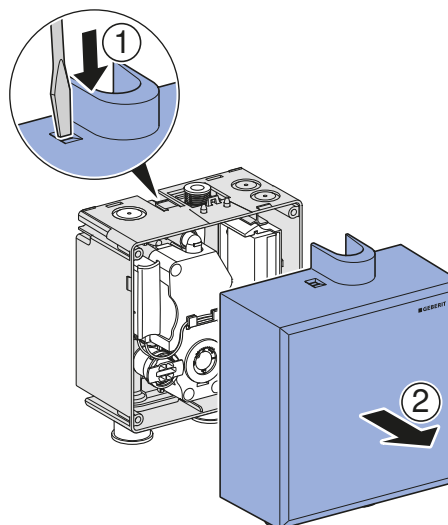
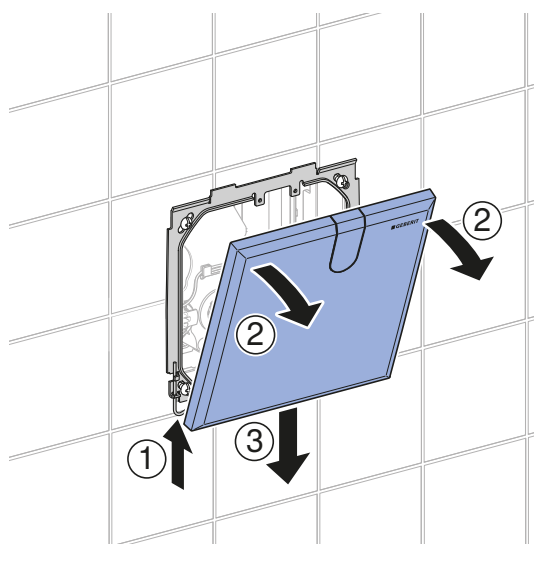
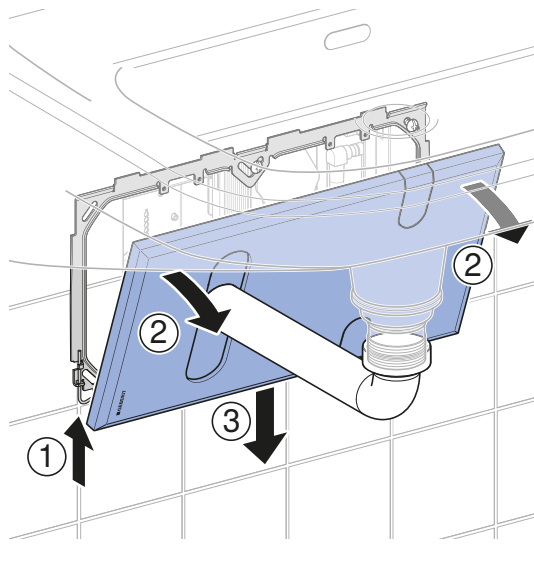


1

1

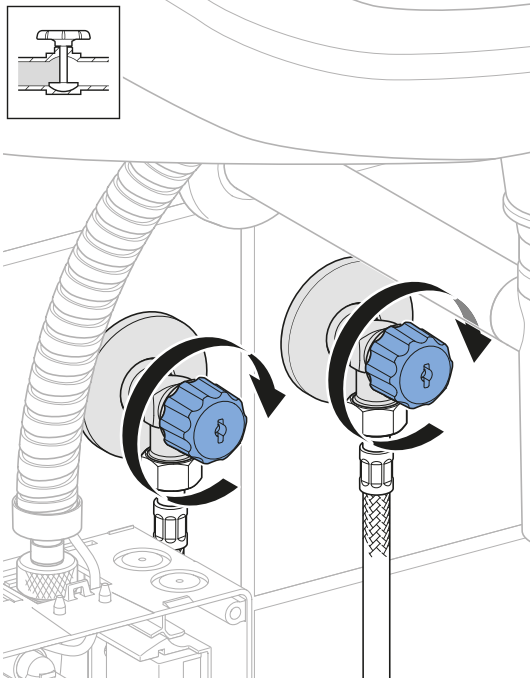
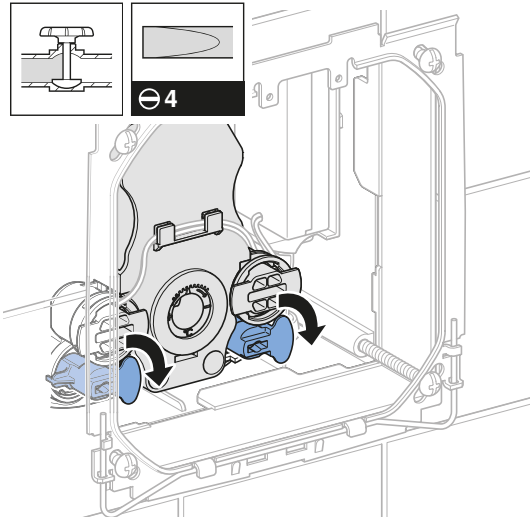


2

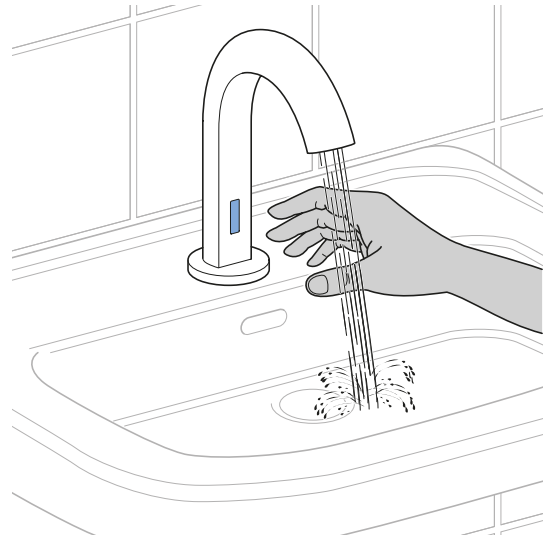


2

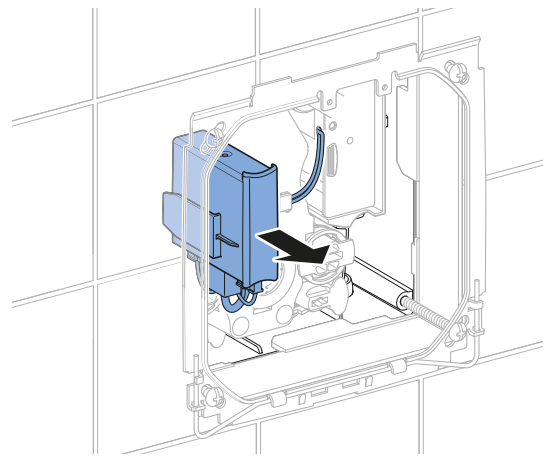
1



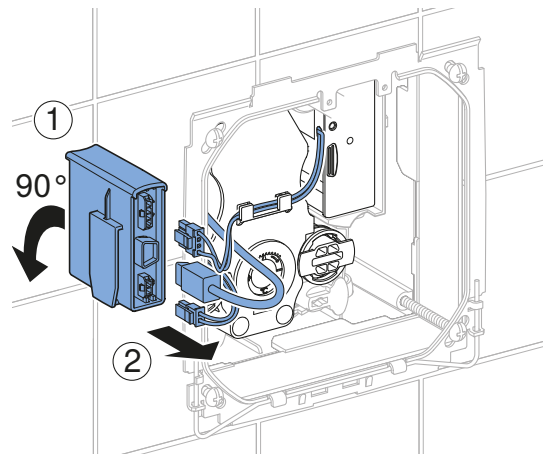
2



3

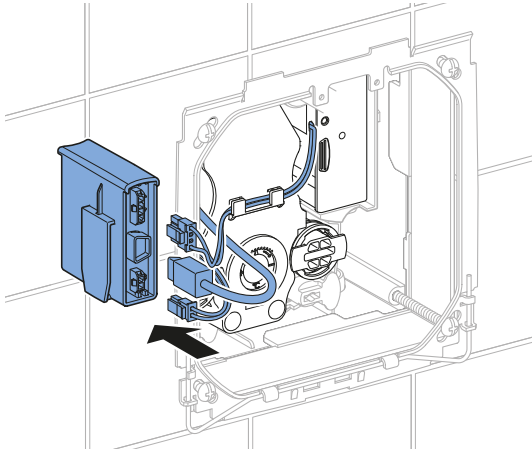


4

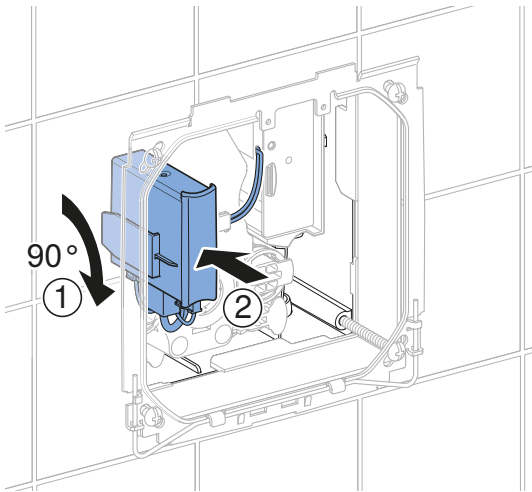


3

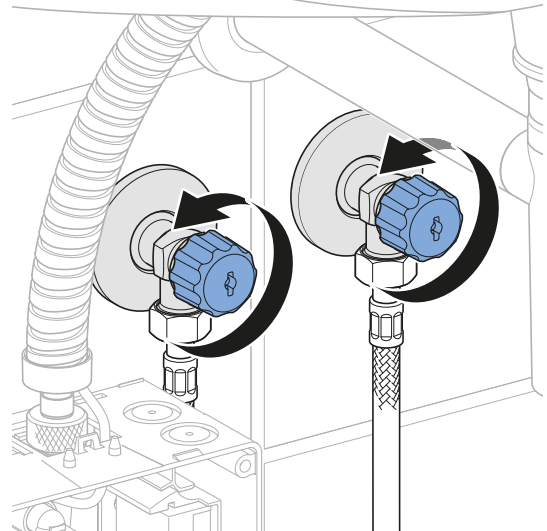
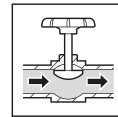
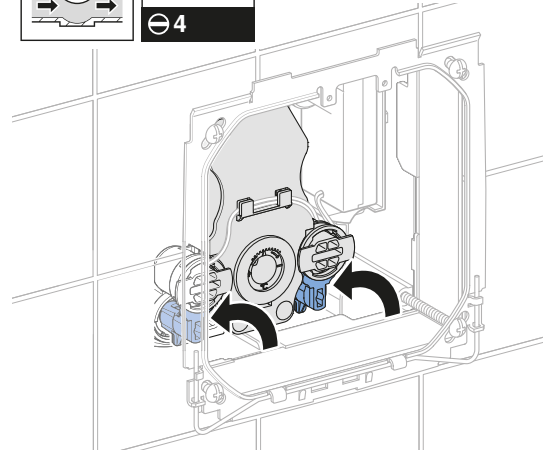
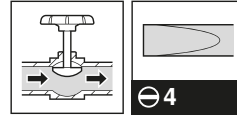
1



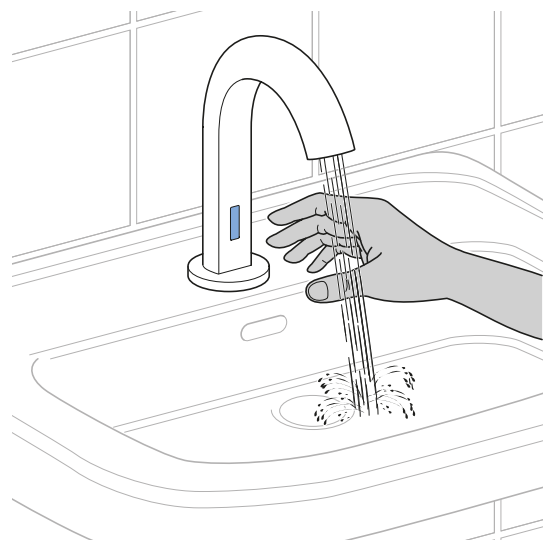
2



3

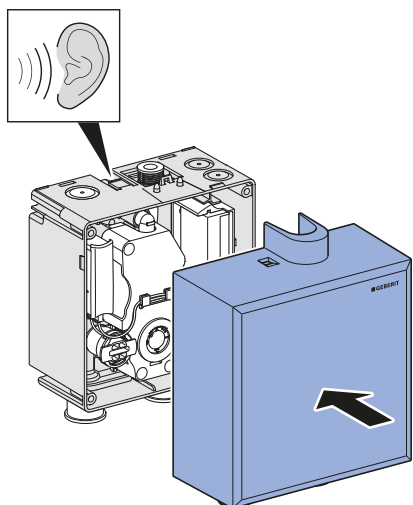
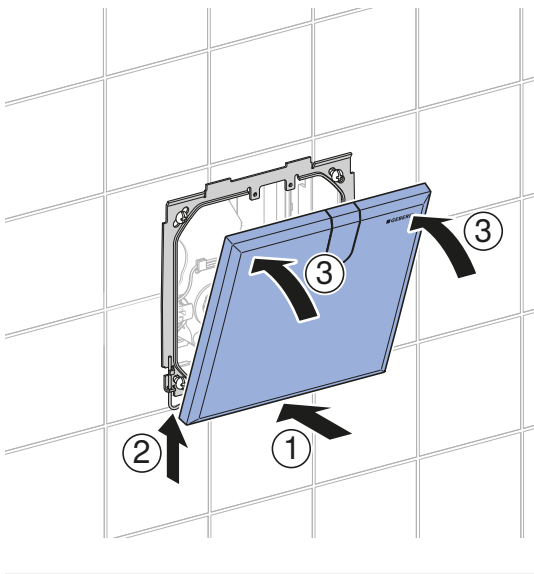
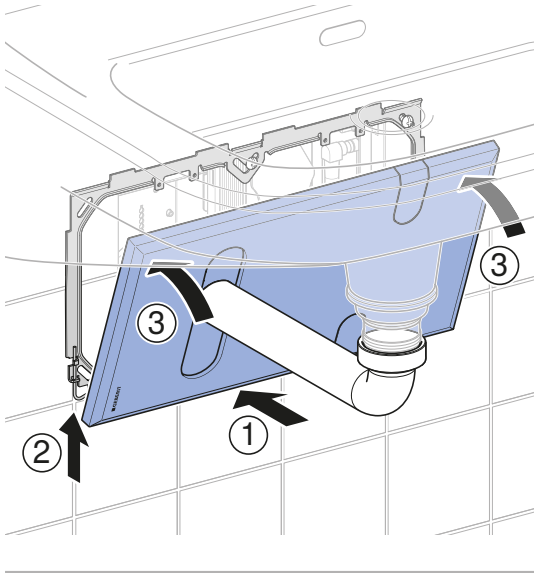


4

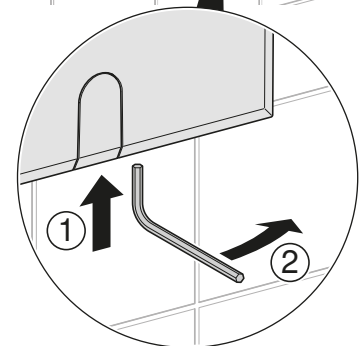
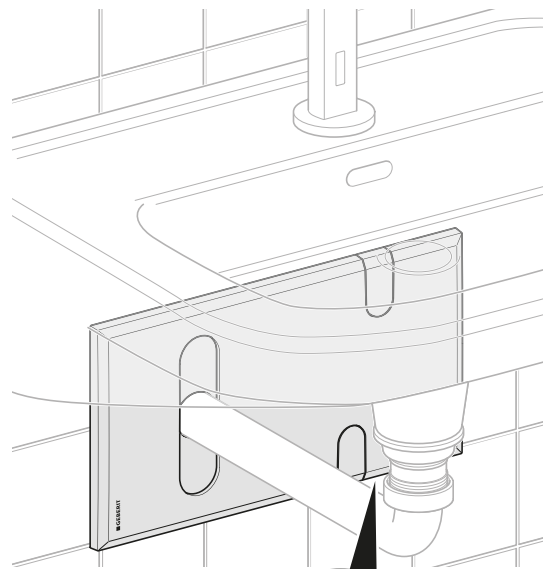
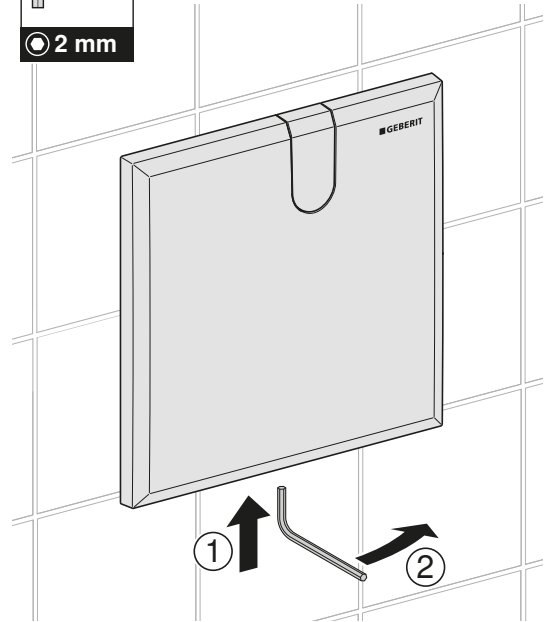
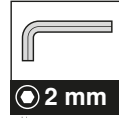


4

1



2



Geberit International AG
Schachenstrasse 77, CH-8645 Jona
documentation@geberit.com
www.geberit.com

