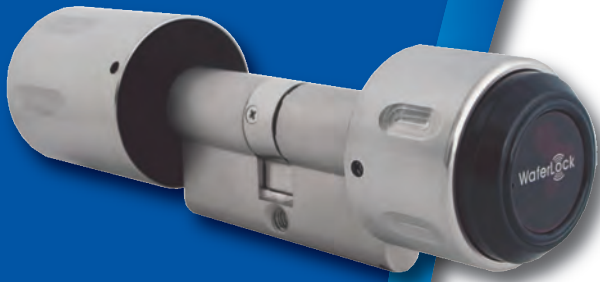


e-Link Access Control System

WAFERLOCK[®]
Security ∞ Simplicity



e-Link System Overview



e-Link the innovative access control system from GB Locking Systems.

A flexible configuration for small to large systems.

Using online wall readers, user cards distribute data from the software to the offline standalone doors, this includes deleted card information, access rights and lock time zones etc. At the same time audit trails and battery status from the offline doors are transferred back to the PC.

The powerful software is easy to use with many features providing a simple, efficient and secure system for all access control requirements.

- Supports up to 64,000 doors / 64,000 users
- User friendly door and user set-up
- Easy User profile setup (includes Visitor Profile), Lock setup and Wall Reader Controller setup
 - Offline locks can be programmed or updated with user access rights from the software using the RT-7500 hand held System Programmer
- Events & Audit Trail reporting
 - User Audit Trail list
 - Lock low battery warning list
 - Door unlocked or alarm warning list
 - Issued Card log list
- Ability for setting up Calendar functions
- Ability for managing Daylight Saving function
- Time Zones: 200
 - Each time zone can have 12 periods
- System User Authorization Management
- Function for importing and exporting files and databases
- Detailed audit / event reports

Index

- 03 Euro Handle Locks
- 04 Energy Savers
- 05 IP67 Rated Electronic Cylinders
- 06 Internal Electronic Cylinders
- 07 Wall Readers
- 08 Wall Reader Controllers
- 09 Software
- 10 Management Tools
 - Programmer
 - Encoder
 - Firmware Updater
- 11 Accessories
 - Emergency Battery Packs
 - Mifare Cards
 - Mifare Fobs

WEL-7500 Euro Handle Lock

Main Features

- Ability to adjust Daylight Saving Time
- Ability to update (read/write) to the card
- Transponder: Mifare Classic (13.56Mhz)
- Max Users: 64,000
- Max Doors: 64,000
- Time zones: 200, each time zone consists of 12 periods
- 128 calendars
- Opening mode:
 1. Standard (default 6 seconds)
 2. Toggle
 3. Timed Toggle
 4. Office Hour Mode
- Emergency Open / Emergency Close mode programmed via a card
- Initial setup by System Programmer thereafter updated by card
- Smart sleep mode
- Acoustic Low Power Warning
- Emergency Power Pack available in case of flat batteries
- Transponder reading distance: up to 20mm
- Totally wire free
- Easy to retrofit onto existing mortise lock cases
- Firmware can be upgraded by FDMS
- Lock opening time adjustable by card update
- Managed by e-Link network system software
- 1024 events stored in the memory

Technical Specification

- Escutcheon size: 290mm (H) x 40mm (W) x 20.5mm (D)
- Battery life: standby 3 years or 50,000 operations
- Battery spec: 3 x AAA 1.5V
- Environment:
 - IP54 (Recommended for internal installation only)
 - Operating Temperature -20°C to 70°C
- EN1634-1 E1 60 Fire Resistant
- Available with Euro Profile cylinder cut-out
- Axis distance from handle centre to cylinder: 72mm, 85mm, 92mm
- Suitable for door thickness: 38 -50 mm as standard
- Standard finish SSS (other finishes available by request)



e-Link Energy Saver WCL-313

Main Features

- Flush Mount to the wall or optional Surface Mount.
- Retrofit to Standard European Wall Socket.
- Available in Dark Grey finish as standard, White and Light Grey available as special order.
- Blue LED Lighting to help you locate your card.
(LED lighting will turn after card is inserted).
- Relay Time Delay of 30 seconds after card is removed.
- Intelligent Reader that can only be activated with site specific cards programmed on the e-Link system.
- No. 1 Relay Output used to switch a mains contactor.

Technical Specification

- Power required: 12Vdc~
(NB. A separate 12vdc power supply is required to power the energy saver)
- Current Draw: 80ma
- Number of relays: 1 (N/C, N/O Rated at 3A @ 30Vdc)
(The relay is used to switch a mains contactor and must not be used to directly switch mains voltage)
- Operating temperature: -20°C to 80°C
- Power required: 12Vdc



C-700/E IP67 Rated Modular Electronic Cylinder

Main Features

- Modular Design for ease of stock management (Cylinder lengths easily changed with extension pieces)
- Ability to adjust Daylight Saving Time
- Transponder: Mifare Classic (13.56Mhz)
- Max Users: 64,000
- Max Doors: 64,000
- Time Zones: 200, each time zone consists of 12 periods
- 128 calendars
- Opening mode:
 1. Standard (default 6 seconds)
 2. Toggle
 3. Timed Toggle
 4. Office Hour Mode
- Emergency Open / Emergency Close mode programmed via a card
- Initial setup by System Programmer thereafter can be updated by user cards
- Acoustic Low Power Warning
- Transponder reading distance: up to 20mm
- Wire free
- Easy to retrofit in place of existing euro profile cylinders
- Firmware can be upgraded by FDMS
- Lock opening time adjustable by card update
- Managed by e-link network system software
- 1024 events stored in the memory

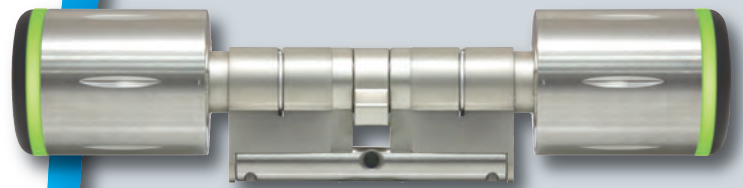
Technical Specification

- IP67 Protection
- Operating Temperature -20°C to +70°C
- Modular Design for ease of stock management allowing you to build your own cylinder lengths
- Complies to EN1303 testing
- Anti-twist – Stainless Steel Bar
- Anti-drill Protection
- Battery life: standby 3 years or 50,000 operations
- Battery: CR2 x 1pc (single)
CR2 x 2pc (double)

Dimensions

Euro Profile Double Cylinder

- Cylinder Lengths Available: 60mm -180mm
- Internal Knob: diameter 35.8mm, length 46mm
- External Knob: diameter 35.8mm, length 46mm



Euro Profile Cylinder & Turn

- Cylinder Lengths Available: 60mm -180mm
- Internal Knob: diameter 32mm, length 25mm
- External Knob: diameter 35.8mm, length 46mm



Euro Profile Single Cylinder

- Cylinder Lengths Available: 40mm (30/10) - 100mm (90/10)
- External Knob: diameter 35.8mm, length 46mm



WCL-7500 Electronic Cylinders

Main Features

- Ability to adjust Daylight Saving Time
- Ability to update (read/write) commands to the card
- Transponder: Mifare Classic (13.56Mhz)
- Max Users: 64,000
- Max Doors: 64,000
- Time zones: 200, each time zone consists of 12 periods
- 128 calendars
- Opening mode:
 1. Standard (default 6 seconds)
 2. Toggle
 3. Timed Toggle
 4. Office Hour Mode
- Emergency Open / Emergency Close mode programmed via a card
- Initial setup by System Programmer thereafter updated by card
- Acoustic Low Power Warning
- Emergency Power Pack available in case of flat batteries
- Transponder reading distance: up to 20mm
- Wire free
- Firmware can be upgraded by FDMS
- Lock opening time adjustable by card update
- Managed by e-Link network system software
- 1024 events stored in the memory

Technical Specification

- Battery life: standby 3 years or 40,000 operations
- Battery spec: 3-LR1, 910A 1.5V x 3pc
- Environment:
 - IP54 (Recommended for internal installation only)
 - Operating Temperature -20°C to 70°C
- EN 1303 EURO Profile cylinder drill protection as standard
- Standard Finish:
 - Knob: Satin Stainless Steel
 - Cylinder Body: Matt Nickel Plate

Dimensions

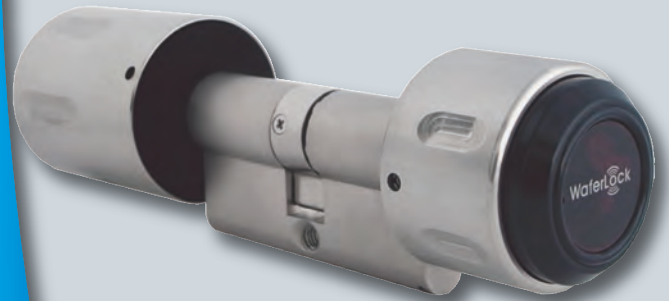
Euro Profile Double Cylinder

- Cylinder lengths available: 60mm -120mm
- Internal Knob: diameter 37mm, length 54.5mm
- External Knob: diameter 37mm, length 54.5mm



Euro Profile Cylinder & Turn

- Cylinder lengths available: 60mm -120mm
- Internal Knob: diameter 37mm, length 48mm
- External Knob: diameter 35mm, length 30mm



Euro Profile Single Cylinder

- Cylinder lengths available: 40mm (30/10) - 70mm (60/10)
- External Knob: diameter 37mm, length 54.5mm



e-Link Wall Readers

WR-1500 Standard Wall Reader (Internal Application)

Main Features

- Compact design
- Transponder: Mifare Classic (13.56Mhz)
- Reading distance: up to 40mm
- LED indication
- Updates & validates cards
- Event reading from cards
- Acoustic indication of card acceptance
- Firmware can be upgraded by FDMS

Technical Specification

- Pre-wired with 3 metres of cable to controller (Optional: 10 metres)
- Power: from WR-2500 controller
- Current draw: 100mA
- Environment:
IP55 (Recommended for internal installation only)
Operating Temperature -20°C to 70°C
- Reader dimension: 115mm x 32mm x 13mm
- Surface mount only
- Communication through RS485 to controller

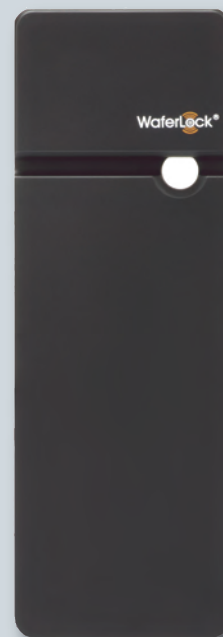
WR-1520 IP67 Rated Wall Reader (External or Internal Application)

Main Features

- Metal Frame
- Supplied with a separate mounting plate for ease of install
- Transponder: Mifare Classic (13.56Mhz)
- Reading distance: up to 25mm
- LED indication
- Updates & validates cards
- Event reading from cards
- Acoustic indication of card acceptance
- Firmware can be upgraded by FDMS

Technical Specification

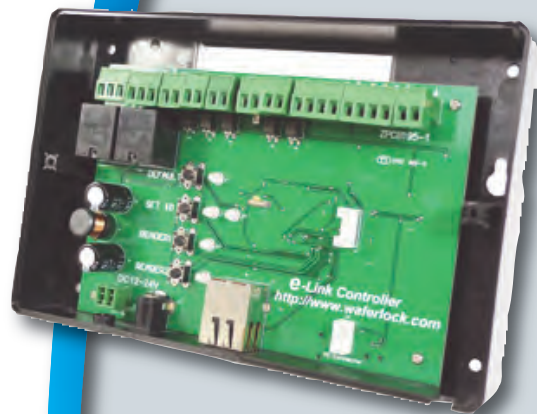
- Pre-wired with 3 metres of cable to controller (Optional: 10 metres)
- Power: from WR-2500 controller
- Current draw: 100mA
- Environment:
IP67
Operating Temperature -20°C to 70°C
- Reader dimension: 90mm x 90mm x 13mm
- Surface fix or mount on a standard UK flush back box
- Communication through RS485 to controller



WR-2500 Online Wall Reader Controller

Main Features

- Max users: 64,000
- Max doors: 64,000
- Ability to adjust Daylight Saving Time
- Ability to validate an expired card through e-Link Wall Reader
- Ability to have firmware upgraded by FDMS
- Emergency open / emergency close mode programmed from software
- Ability to update (read/write) to the card through e-Link Wall Reader.
 1. Add user, delete user
 2. Add calendar, DST setting
 3. Enable / disable authorization by cards
 4. Change opening mode for locks
- Events:
 - Controller to PC: unlimited when online
- Time zones: 200
 - Each time zone consists of 12 periods
- 128 calendars
- 2 Reader connections (in / out) Anti-Pass-back function available with 2 e-Link Wall Readers.
- Outputs: 2 relay outputs
- If the network fails, the controller will continue to work offline.
(If the unit is offline, 1024 events are stored in the memory and are transferred when the unit is online)
- Encryption Code Protocol between PC & Controller



Technical Specification

- Power: 12Vdc - 24Vdc
- Current draw: 250mA
- On-board TCP/IP board for RJ45 network connection with CAT5 cable
- Number of wall readers: 2
- Link to wall reader by RS 485 cable
- Number of relays: 2 (Rated at 7A @ 30Vdc)
- Inputs: 4 (monitored)
- Exit button input (monitored)
- Operating temperature: -20°C to 70°C
- CE certified

WR-2510 Offline Controller

If no network connection is available the WR-2500 can be Supplied to work as an offline standalone controller. The controller can be re-programmed to work online.

e-Link Network System - Software

Software Specification & Capacity:

- Supports up to 64,000 doors / 64,000 users
- Easy user profile setup (includes visitor profile), lock setup, and wall reader controller setup
 - Offline locks can be programmed or updated with user access right from the software using the RT-7500 hand held System Programmer
- Events & Audit Trail reporting
 - User Audit Trail list
 - Lock low battery warning list
 - Door unlocked or alarm warning list
 - Issued Card log list
- Ability to set up Calendar functions
- Ability to manage Daylight Saving function
- Time Zones: 200
 - Each time zone can have 12 periods
- System User Authorization Management
- Import & Export of documents function
- Detailed Audit / Event Reports

System Requirement:

- OS: Windows 2000/XP/Vista/2003/7/8
- CPU: Intel Pentium 1.0 GHz+ or AMD Athlon 1000+
- RAM: min 512MB
- Hard disk space: min 100MB
- CD-ROM or DVD-ROM
- Resolution: 1024*768
- Minimum Spare USB Port: 1
- Ethernet Card (for connection between PC and Online Wall Reader Controller)



e-Link Management Tools

e-Link System RT-7500 Programmer / Card Encoder

The System Programmer is a handheld device for initializing locks, reading / writing data to the locks. It is a communication bridge between PC and the locks.

It is also used as a desktop encoder for creating new cards / fobs and also for deleting cards / fobs.

- USB port connection with PC
- Ability to read / write data to Mifare cards / fobs
- Ability to update user lock access rights
- Ability to change mode of the lock (supports Emergency Open / Close commands)
- Ability to initialize the locks
- Smart Auto Power Off after 1 minute to save battery life
- Batteries: 1.5V AAA x 3PC (Uses power from the PC when connected with USB lead)



e-Link System RT-7510 Firmware Updater

The device can be used with FDMS software to update the the firmware of all locks, wall readers and wall controllers.

To be used by qualified e-Link engineers only – please contact us for more information.

- USB port connection with PC
- Ability to upgrade firmware to all locks and wall readers
- Firmware can be updated to lock, reader, controller and Firmware Programmer Device
- Smart Auto Power Off after 1 minute to save battery life
- Batteries: 1.5V AAA x 3PC (Uses power from the PC when connected with USB lead)



e-Link System Accessories

External Emergency Battery Packs

External battery pack provides emergency power to the Euro-lock or cylinder if batteries are flat.

EBP/CY Cylinder Emergency Pack

Requires 4 x 910A LR1 1.5V batteries

EBP/EL Euro Lock Emergency Pack

Requires 4 x AAA 1.5V batteries

Mifare Cards

Mifare WIS-300 S50 – 1k ISO Card Plain White

Mifare WIS-300 S70 – 4k ISO Card Plain White

- Standard ISO cards for use with e-link cylinders, euro handle locks and wall readers
- Available frequency: Mifare 13.56Mhz
- Card printing facility available

Mifare Fobs

Mifare WTG-306 S50 – 1k Key-ring fob

- Key-ring fob for use with e-link cylinders, euro handle locks and wall readers
- Available frequency: Mifare 13.56Mhz

For read quality we recommend that only the above cards / fobs are used with the e-Link System.

3rd party Mifare cards / fobs may be compatible with the e-Link system but we would require samples to ascertain suitability.



Fax Back:
0191 271 3644
Scan & Email:
sales@gblockingsystems.co.uk

Name:	
Address:	
Tel No:	
Fax No:	
Email Address:	

Please contact me to arrange a demonstration of your e-Link System

Please contact me by phone to discuss my requirements

Please send me a catalogue on your full range of access control products

**GB Locking Systems are specialists in
Access Control & Door Automation Equipment**



Tel: 0191 271 6344 Fax: 0191 271 3644
Email: sales@gblockingsystems.co.uk
www.waferlock.net
www.gblockingsystems.co.uk