

Hotel Access Control System

Secure, Smart and Simple, are the best word to describe

Waferlock's Hotel Access Control solution.

Combining the advantages, the hotel digital cylinder, hotel handle lock provides total secure & reliable for hotel guests.

Plus, the Hotel Property Management System leaves no hassle for hotel cards management.



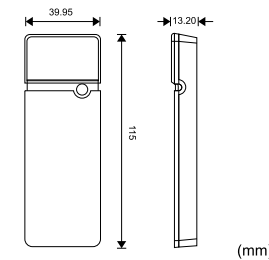
WR-1310
Hotel Wall Reader

- Small & Compact Design, Easy installation
- 3 Meter cable to Wall Controller (option: 10M)
- Reading Distance: up to 5cm
- Transponder: Read/Write Mifare 13.56Mhz
- LED indication light
- Power from controller
- Reader Dimension: 115mmx39.95mmx13.20mm
- Operation temperature: -20°C~70°C
- IP 54

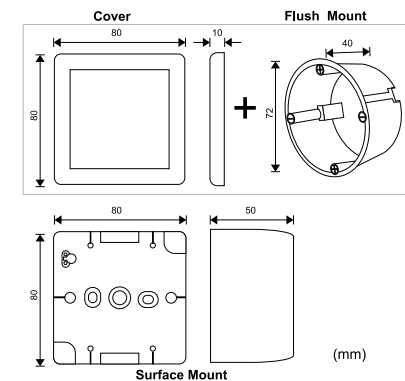


WR-2300
Hotel Wall Controller

- Flush Mount to the wall.
 - Option: Surface Mount
- Retrofit Standard European Wall Socket.
- Wall Reader connected: 1
- Door opening time: setup by HPMS software (1,3,5,10 second)
- Output can be electric strike, electromagnetic lock, garage door and more.
- Maximum event: 504
- Power: DC 12v, 1A
- Operation temperature: -20°C~70°C



(mm)



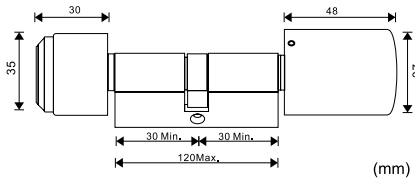
(mm)

Hotel Access Control System



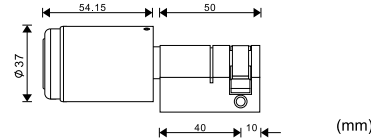
WCL-7300
Hotel Digital Cylinder

- EN 1303 Euro-Profile Cylinder
- Transponder: Read/Write Mifare 13.56Mhz
- Reading Distance: up to 3cm
- Easy installation, Retrofit to European door.
- Smart Sleep Mode
- Max Events: 504
- Cylinder Size: 60mm~120mm
- Battery life: standby 3 years or 30,000 operations
- Battery spec: LR1, 910A, 1.5V x 3pcs
- Acoustic Low Power Warning
- External Power Supply for flat battery (option)
- Operation temperature:-20°C~70°C
- Application area: Hotel Guest Rooms, Staff Rooms.
- Option: IP 54



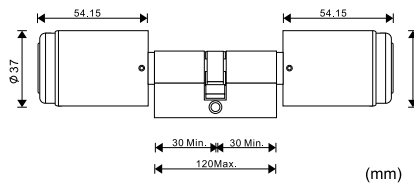
WCL-7300M
Hotel Digital Half Cylinder

- Cylinder Size: 40mm (30/10)~70mm (60/10)
- Battery: LR1 (910A) 1.5v X 3pcs
- Specification the same as WCL-7300
- Application area: cabinet furniture, locker, electric box one way exit door.



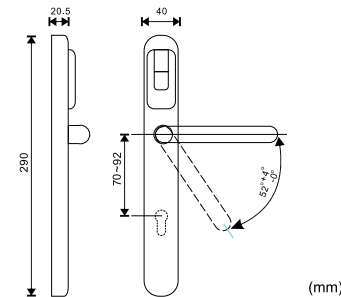
WCL-7300N
Hotel Digital Double Cylinder

- Cylinder Size: 60mm~120mm
- Battery: LR1 (910A) 1.5V x 6pcs
- Specification the same as WCL-7300
- Application area: Passage Door, Public Door

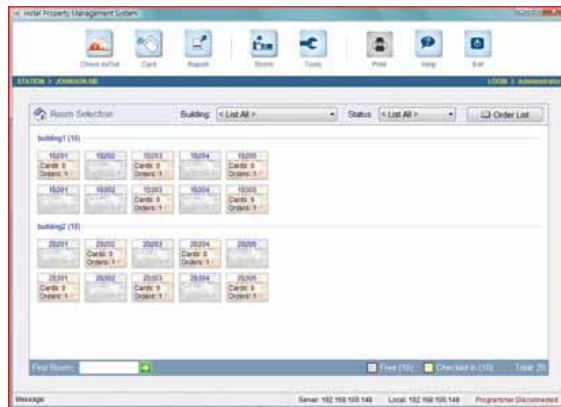


WEL-7300
Hotel Euro Handle Lock

- Transponder: Read / Write Mifare 13.56Mhz
- Operation: 50,000 or standby for 3 years
- Reading Distance: up to 30 mm
- Battery: AAA 1.5V alkaline x 3pcs
- Door thickness: 40~120mm
- Do not disturb switch on back of the escutcheon
- Battery case hide inside cover plate
- Mechanical cylinder override in case flat battery
- Low power acoustic warning with LED light
- Retro fit to the existing standard EURO mortise lock
- Exchangeable handle position (left to right, right to left)
- Application area: Hotel guest rooms, hotel public doors.
- External Power supply battery kit
- Axis distance from handle to cylinder: 70mm, 72mm, 85mm, 92mm
- IP 54



Software Hotel Property Management System



The main purpose of Hotel Property Management System (HPMS) is to setup issuing cards for different type of usage. In order to manage a volume of hotel guests and hotel personnel, HPMS has distinguished and organized Hotel Cards by its function, no matter if you are hotel check in receptionist or hotel MIS, you will be able to learn the use of this handy system quickly and easily.

Software Specification & Capacity:

- Supports up to 1,500 rooms / hotel
- Pre-Check in Schedule available
- Easy add guest cards, delete issued cards, or ban any lost cards.
- Office Hour Mode for Passage Door, Public Door.
- Ability to change mode of the lock:
- Instant Event Report by card.
- Check in / Out Report
- Card Log Report
- User Audit Trail for HPMS software
- User Authorization Account management.
- API available for connecting PMS to HPMS.
- HPMS is a ready to use software with all hotel lock from Waferlock.

System Requirement:

- Operating System: Windows 2000/XP/2003/Vista/ 7
- CPU: Intel Pentium 1.0GHz+ or AMD Athlon 1000+
- RAM: 256 MB
- HardDisk Space: 100 MB
- CD-ROM or DVD-ROM
- Resolution :1024*768
- Minimum USB port: 1
- Ethernet Card (for multi front-desk connection)



RT-7300
Hotel System Programmer

- USB port with PC
- Ability to Read/Write data into read/write cards.
- No Battery needed, Power by USB port from PC.



RW-313
Hotel Energy Saver

Main Feature:

- Inserting hotel guest card or staff card to turn on power of the room
- Transponder: Mifare Classic (7 byte supported)
- Reading distance: 5 cm

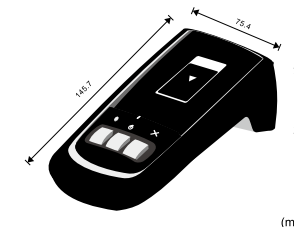
Technical Specification:

- Power: DC12v
- Relay: 1 relay
- Operation temperature: -20°C~70°C



RT-7310
Time Calibrator (For Hotel Application)

- Time Calibrator is an option device for updating lock or cylinder's time precisely.
- Battery: 1.5V AAA X 3pcs



(mm)