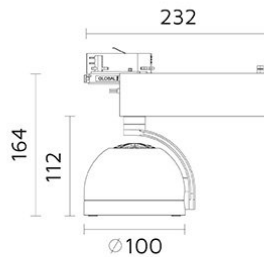
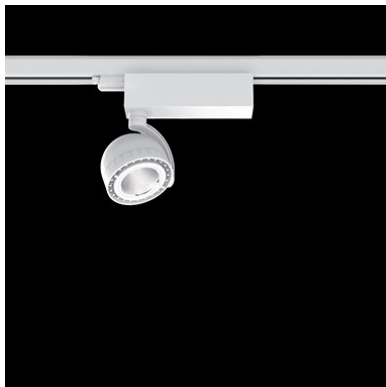


Mini Palla Track

6332-K30D60

Palla



Track Mounted Adjustable Spotlight with LED

- Light head: 350° rotatable, up to 90° vertical tilting.
- Made from die cast aluminium in powder coat finish, light head designed with integrated heat-sink.
- Optical grade metalized polycarbonate reflector.
- 3 circuit universal track adaptor.
- Passive cooling COB LED source 3000K CRI>80 of 2540 nominal lumen.
- System power 26W; System efficacy 87,5 lm/W; 2275 delivered lumen.
- Optic: reflector beam angle: 60°.
- Supplied with non-dimming integral driver 220-240V 50/60Hz.
- Dimming options available on request.
- Design by Franco Mirezzi.

LED source package is available on request with a preferred LED colour rendering CRI>90 and/or other colour temperature K options.

Specifications

Designed and manufactured to comply with European standard EN 60598.



Product code	Finish	Color temperature	CRI	Beam angle	Dim. options	Code
6332	10 - Black	K30-3000K	>80	D60-60°	Dali	1
	11 - White				Phase	2
					LaserDIM	5

Ordering code example : 6332 - __ K30 D60 __