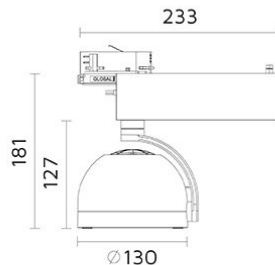


## Palla Track

## 6333-K40D50

Palla



### Track Mounted Adjustable Spotlight with LED

- Light head: 350° rotatable, up to 90° vertical tilting.
- Made from die cast aluminium in powder coat finish, light head designed with integrated heat-sink.
- Optical grade metalized polycarbonate reflector.
- 3 circuit universal track adaptor.
- Passive cooling COB LED source 4000K CRI>80 of 4280 nominal lumen.
- System power 38W; System efficacy 94,8 lm/W; 3604 delivered lumen.
- Optic: reflector beam angle: 50°.
- Supplied with non-dimming integral driver 220-240V 50/60Hz.
- Design by Franco Mireni.

LED source package is available on request with a preferred LED colour rendering CRI>90 and/or other colour temperature K options.

### Specifications

Designed and manufactured to comply with European standard EN 60598.



Product code	Finish	Color temperature	CRI	Beam angle	Dim. options	Code
6333	10 - Black	<b>K40-4000K</b>	>80	<b>D50-50°</b>	Dali	1
	11 - White				Phase	2
					LaserDIM	5

Ordering code example : 6333 - \_\_ K40 D50 \_\_