

FLOWFAST - fast track transformations



Retail



Commercial



Transport



Residential



Food and Drink



Pharmaceutical

WELCOME TO FLOWCRETE - for the world at your feet

Flowcrete's commitment to exceptional design, technical support and advisory services, from initial enquiry through to installation, is at the heart of our business philosophy.

Our global success is driven by our commitment to excellence; excellence in products, excellence in service and excellence in people.

With manufacturing plants across Europe, the Americas, Asia and Africa, a global commercial and sales support team and the backing of a major multi-national manufacturing group, Flowcrete is well placed, as the world's leading performance flooring designer and manufacturer, to serve clients in their local markets.

Our fully trained and monitored global network of approved flooring contractors ensures your flooring project is in safe hands with Flowcrete.



Mark Greaves
Managing Director
Flowcrete Group Ltd



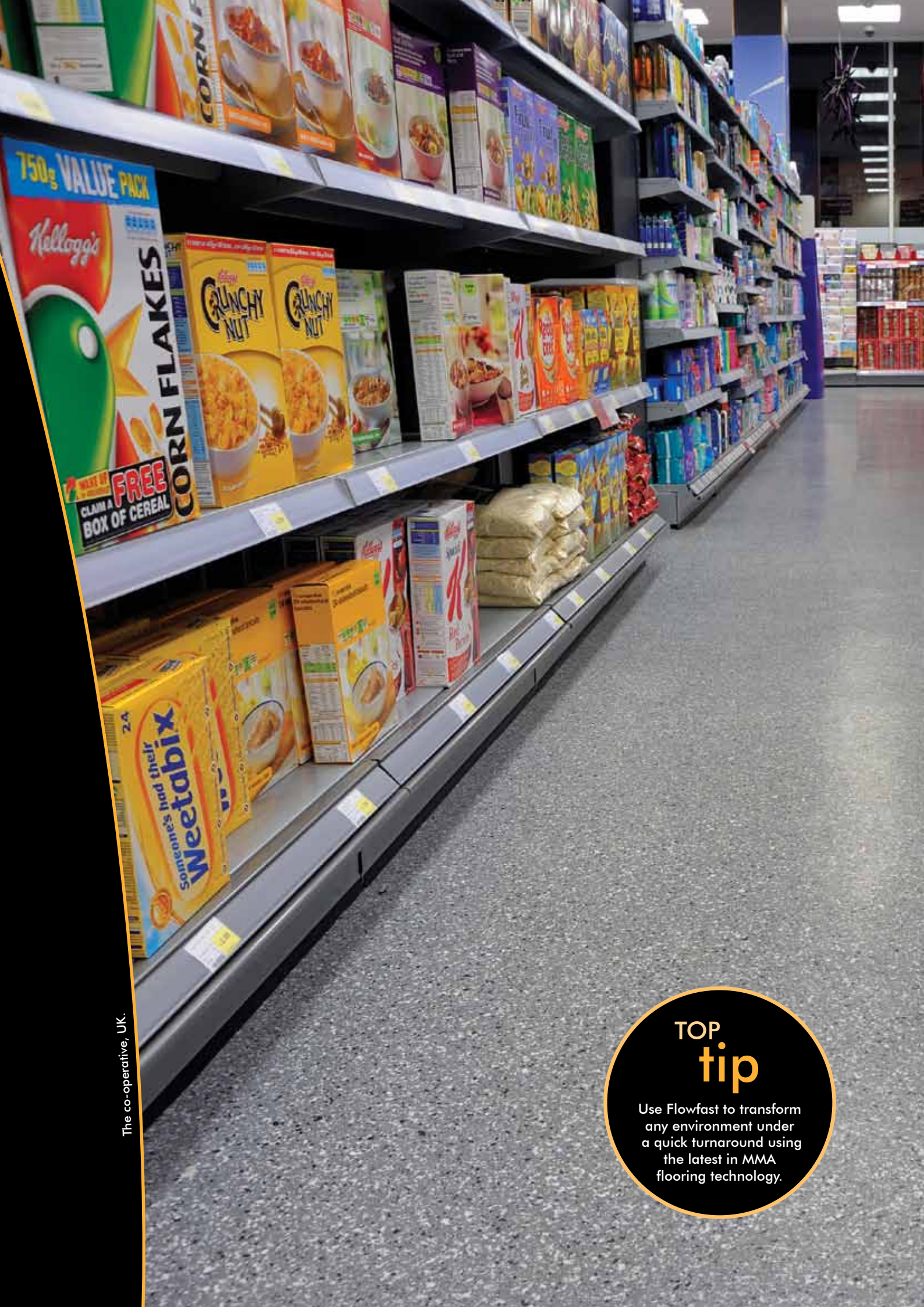
FLOWFAST - floors ready in 2 hours

Against the clock, Flowfast is hard to beat. Ready to use just two hours after application Flowcrete's speediest flooring solution delivers unrivalled installation and cure times as well as an eye-catching finish to transform environments underfoot.

Available in a creative mix of colours and finishes, Flowfast is well-suited to the commercial sector, where it has been gaining speed at a number of airports, shopping centres, residential developments, underground rail stations, stadia buildings and arena complexes across the globe.

Offering impressive chemical, wear and slip resistance, Flowfast is also a popular choice with the food processing, mechanical, chemical and electronic goods industries where it's seamless and durable finish offers an excellent platform for hygiene and heavy industry.

These qualities make Flowfast the ultimate flooring choice where an attractive and durable surface needs to be installed quickly.



The co-operative, UK.

TOP tip

Use Flowfast to transform any environment under a quick turnaround using the latest in MMA flooring technology.

FLOWFAST



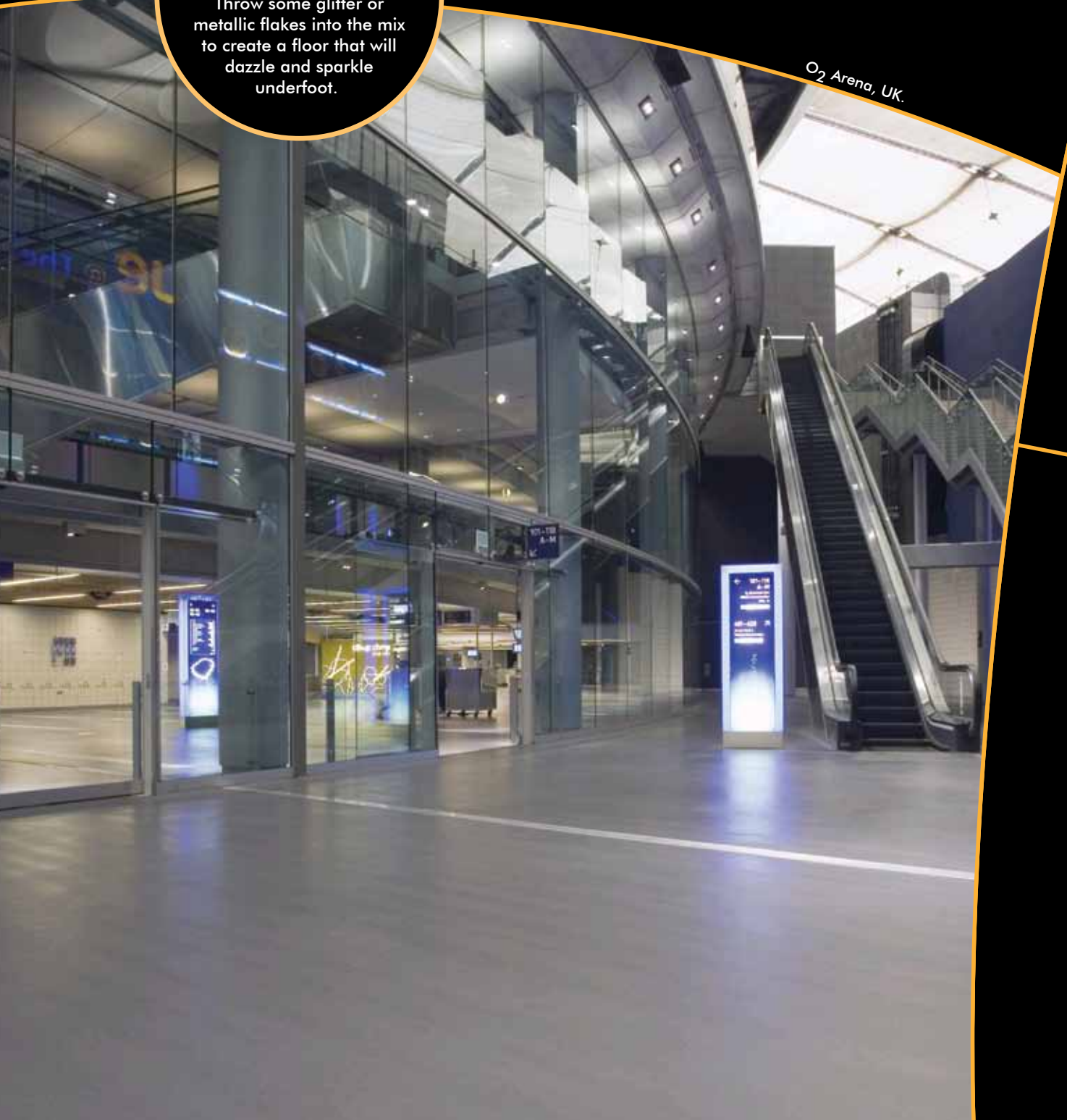
commercial

TOP tip

Throw some glitter or metallic flakes into the mix to create a floor that will dazzle and sparkle underfoot.

FLOWFAST combines inviting colour blends with enhanced durability and an attractive texture to ensure a performance floor finish fit for any commercial environment - all with the additional benefit of fast track installation.

O2 Arena, UK.



INSPIRING

creative spaces

The commercial sector can rely on Flowfast to create an inspiring and welcoming environment - under a quick turnaround.

From shopping centres and supermarkets right through to the airport terminal, commercial environments have to impress their customers. Flowfast is the ideal flooring choice to create a talking-point in consumer spaces, offering a decorative surface that combines great looks with great performance.

Available in a virtually limitless palette of colours and styles, Flowfast can be used to match specialist corporate colours or to create a unique colour blend that fits seamlessly with the interior design scheme of your commercial building.

Flowfast also offers excellent spillage and stain resistance as well as the durability required to take impact in its stride. The system comes with an adjustable anti-slip profile to ensure safety in heavily trafficked concourse environments.

University of Glasgow, UK.



Manchester International Airport, UK.



KEY markets

- Supermarkets
- Residential
- Corporate Offices
- Retail
- Stadia
- Shopping Centres
- Leisure
- Education
- Hotels & Resorts
- Transport
- Airports
- Healthcare



FLOWFAST

industrial

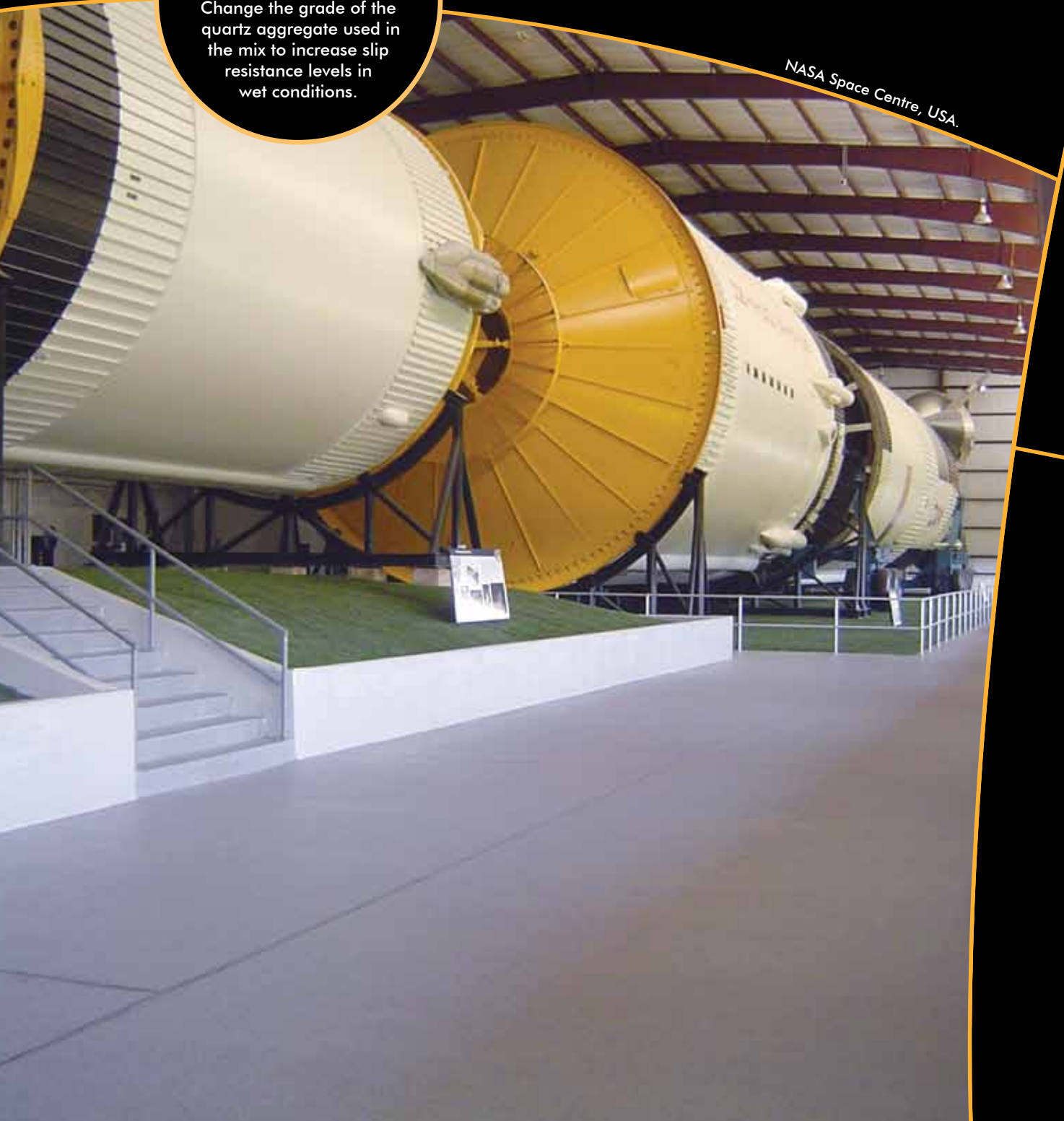


TOP tip

Change the grade of the quartz aggregate used in the mix to increase slip resistance levels in wet conditions.

FLOWFAST combines chemical and slip resistance with a high compressive strength and excellent cleanability to ensure a performance floor finish fit for any industrial environment - all with the additional benefit of fast track installation.

NASA Space Centre, USA.



DELIVERING

performance

The manufacturing industry can count on Flowfast to create a more productive working environment - minimising downtime.

From pharmaceutical and food processing areas right through to the automotive production plant, the manufacturing environment must perform. Flowfast has been specially formulated not only to meet the heavy-duty needs of the industrial workspace but also to improve hygiene and productivity levels within.

High chemical, stain, abrasion and wear resistance teamed with exceptional durability ensure that Flowfast stands up to a variety of industrial processes as well as heavy foot and vehicular traffic. In addition, the system's anti-slip profile guarantees safety underfoot.

For the hygiene industries and other specialist clean environments, Flowfast offers a seamless joint-free finish that eliminates the build up of harmful bacteria, dust and dirt in unsightly cracks and crevices.

Cleone Foods, UK.



Lonza Pharmaceuticals, Singapore.



KEY markets

- Food & Drink
- Pharmaceutical
- Aerospace
- Engineering
- Power
- Animal Care
- Automotive
- Electronic
- Chemical Processing
- Print & Packaging
- Manufacturing
- Warehousing



FLOWFAST

benefits

Flowfast offers a wide range of benefits for commercial or industrial environments in need of a floor that offers speed, strength, style and safety...

FAST - Flowfast is ready to use just two hours after application and can be applied overnight - even at sub-zero temperatures - to reduce disturbance and downtime.

CREATIVE - Flowfast inspires creativity, offering a wide palette of colourful quartz and flake blends as well as the option to create bespoke designs and patterns across the floor.

HYGIENIC - Flowfast delivers a seamless, joint-free surface that not only makes the floor easier to clean, but also considerably reduces the build-up of dirt and harmful bacteria.

SAFE - Flowfast offers an adjustable anti-slip and skid profile that can be increased to ensure maximum levels of protection for both staff and visitors underfoot.

DURABLE - Flowfast holds up to heavy foot and vehicular traffic and offers impressive scratch, abrasion and impact resistance in demanding working environments.

RESISTANT - Flowfast offers protection against a variety of organic and inorganic chemicals including a number of alkalis, acids, oils, salts and other aggressive media.

COST EFFECTIVE - Flowfast delivers cure times that keep client downtime to a minimum. What's more, the system's proven longevity guarantees that the life-cycle cost of the floor remains low.

ENVIRONMENT - Flowfast is a solvent free product and as a result it does not release any volatile solvents to atmosphere during the installation process.

Approved and tested worldwide, Flowfast comes complete with our product warranty and customer support policy. Backed by a major multi-national manufacturing company and with an international network of approved flooring applicators in place, Flowfast is the ideal flooring choice for any environment in need of a fast track transformation.

Klabir Paper Mill, Brazil.



**TOP
tip**

Use Flowfast Cove Mix to provide a seamless and hygienic transition between the floor and the wall.

Flowfast's exceptional speed benefits both new build and refurbishment projects where time limits need to be met and disruption needs to be challenged at every stage.



Sainsbury's Supermarket, UK.

£26.99

COOL!

£19.99

£2.50

£3.99

£2.50

£2.50

£2.50

£2.50

£2.50

£2.50

£2.50

£2.50

£2.50

£2.50

£2.50

£2.50

£2.50

FLOWFAST SYSTEMS

technical zone



The figures provided in the table below are typical properties of our Flowfast MMA systems achieved in controlled laboratory tests that were conducted at 20°C and at 50% Relative Humidity. For full system technical data, please contact your local Flowcrete office or alternatively visit us online.

Flowfast System:	Flowfast Terroso	Flowfast Quartz	Flowfast Kristalina	Flowfast Metalika	Flowfast Rapid Transit SR	Flowfast Rapid Transit Tactiles
System Thickness	4mm	4mm	4mm	4mm	5mm	Tile: 5mm Blister: 10mm
Impact Resistance (ISO 6272)	1kg > 1.8m 2kg > 1.5m	1kg > 1.8m 2kg > 1.5m	1kg > 1.8m 2kg > 1.5m	1kg > 1.8m 2kg > 1.5m	1kg > 1.8m 2kg > 1.5m	1kg > 1.8m 2kg > 1.5m
Abrasion Resistance (BS 8204-2)	Class AR2	Class AR1	Class AR2	Class AR2	Class AR2	Class AR0.5
Temperature Resistance (Sustained)	Up to 60°C	Up to 60°C	Up to 60°C	Up to 60°C	Up to 60°C	Up to 60°C
Temperature Resistance (Intermittent)	Up to 80°C	Up to 80°C	Up to 80°C	Up to 80°C	Up to 80°C	Up to 80°C
Permeability (Nil-Karsten Test)	Impermeable	Impermeable	Impermeable	Impermeable	Impermeable	Impermeable
Bond Strength (Primed Concrete)	>1.5 N/mm ²	>1.5 N/mm ²	>1.5 N/mm ²	>1.5 N/mm ²	>1.5 N/mm ²	>1.5 N/mm ²
Compressive Strength (DIN 1164)	>45 N/mm ²	>45 N/mm ²	>45 N/mm ²	>45 N/mm ²	>45 N/mm ²	>45 N/mm ²
FeRFA Type (BS 8204-6)	Type 4	Type 6	Type 4	Type 4	Type 4	-
Slip Resistance* (BS 7976-2)	Dry >40	Dry >40	Dry >40	Dry >40	Dry >40	Dry >40
Speed of Cure** (per layer)	Traffic: 2hr Chem: 2hr	Traffic: 2hr Chem: 2hr	Traffic: 2hr Chem: 2hr	Traffic: 2hr Chem: 2hr	Traffic: 2hr Chem: 2hr	Traffic: 2hr Chem: 2hr
Fire Resistance	Class 2 (Indicative)	Class 2 (Indicative)	Class 2 (Indicative)	Class 2 (Indicative)	L.U.L Section 12	L.U.L Section 12

* The slipperiness of flooring materials can change significantly due to the installation process, after short periods of use, due to inappropriate maintenance or longer-term wear. To meet slip resistance value requirements for wet conditions, textured systems are recommended. Please contact a Technical Advisor at your local Flowcrete office for further details and specifications.

** Cure at ambient temperatures in the range 0°C to +35°C can be achieved by altering the quantity of catalyst used. For applications below 0°C, please contact a Technical Advisor at your local Flowcrete office.

CHEMICAL resistance

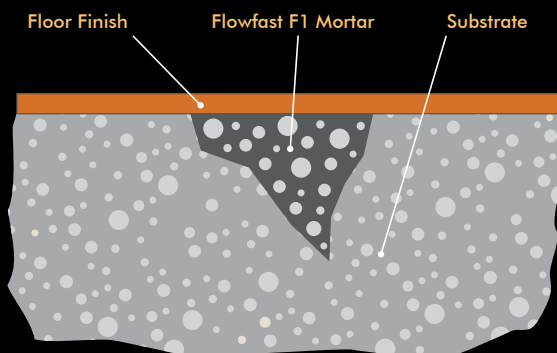
Our Flowfast systems have been designed to offer exceptional resistance against a wide variety of chemicals and substances used across a broad range of working environments, including a number of acids, alkalis, oils, salts and other aggressive media. The following list provides a selection of chemicals and substances that are fully resistant with continuous contact. A full Flowfast chemical resistance chart is available upon request.

Acids	Alkalis	Organic	Other	
Acetic Acid 25%	Caustic Soda	Petroleum	Crude Oil	Vinegar
Hydrochloric Acid 37%	Potassium Hydroxide 50%	Formaldehyde 37%	Calcium Chloride	Wine
Lactic Acid 90%	Lime Milk	Diesel	Bleach	Beer
Nitric Acid 10%	Sodium Hydroxide 30%	Kerosene	Blood	Ammonia
Sulphuric Acid 50%	Ammonia 10%	White Spirit	Hydrogen Peroxide 30%	Urine
Tartaric Acid 50%	Aluminium Hydroxide	Turpentine	Ammonium Chloride	Antifreeze

SUBSTRATE repair



Flowfast F1 Mortar is a fast and durable acrylic resin-based repair mortar that provides a fully hardened surface after just 30 minutes. Flowfast F1 Mortar is predominantly used to mend damage, holes and imperfections in concrete substrates and can be used with machine bases and joint arises as well as both drill and bolt holes. It can be installed on cementitious substrates that have a relative humidity of up to 97% (to BS 8204) and at heat temperatures ranging from -20°C through to 30°C*.



Thickness**	6 - 25mm
Cure Time (20°C)	60 - 90 Minutes
Density (20°C)	2.1 kg/l (DIN 53 479)
Compressive Strength	74.5 N/mm ² (DIN 1164)
Tensile Strength	27 N/mm ² (DIN 1164)

* Two grades of Flowfast F1 Mortar are available depending on the application temperature. For application temperatures below 0°C, use Flowfast F1 Mortar (low temperature grade, 0 to -20°C). For application temperatures above 0°C, use Flowfast F1 Mortar (standard grade, 0 to +30°C).

** Product ready to use for thicknesses 6-25mm (for layer thicknesses greater than 25mm, additional aggregates may be added).

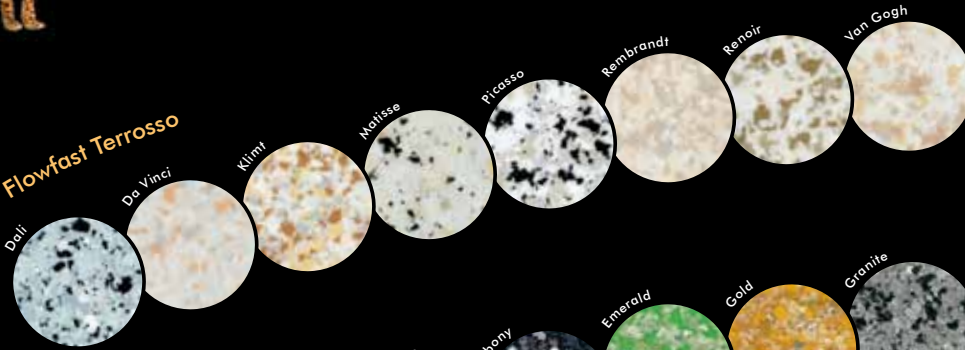
(Figures given in the table above are for cured product and mix ratios for minimum layer thickness - typical values obtained in laboratory testing).

STANDARD SYSTEM

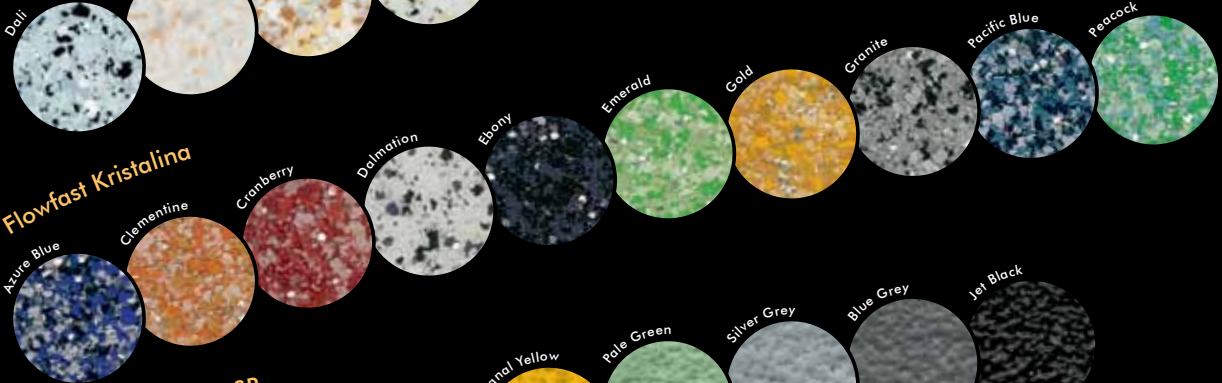
colours



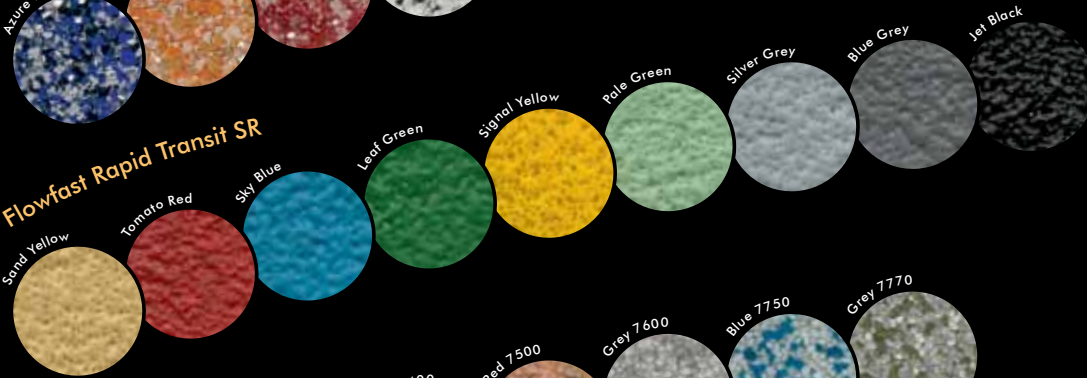
Flowfast Terrosso



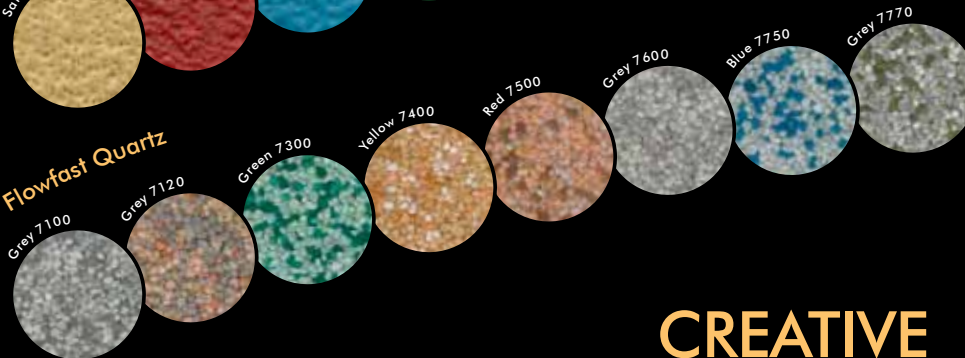
Flowfast Kristalina



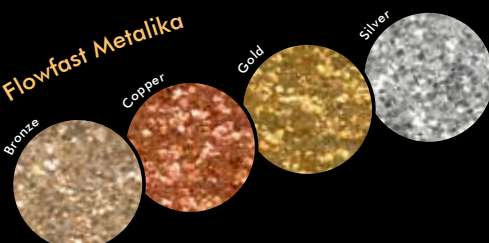
Flowfast Rapid Transit SR



Flowfast Quartz



Flowfast Metalika



CREATIVE freedom

With an almost limitless palette of vibrant colours available, Flowfast offers you the chance to create a truly one-of-a-kind floor finish.

Create your own blend of coloured, glitter and metallic floor flakes or coloured quartz aggregates to effortlessly compliment the interior design of your environment.

Use our specialist colour service to match your brand-new Flowfast floor to existing terrazzo floor tiles or other adjacent floor finishes.

The applied colours may differ from the examples shown.

For a full colour chart and sample, please contact your local Flowcrete office.

SYSTEM products



	Description	Uses
Flowfast Standard Primer	A 2-component low viscosity MMA based primer for concrete and cementitious substrates.	Used for priming concrete, screeds and wood, prior to the installation of Deckshield Rapide or Flowfast resins.
Flowfast Asphalt Primer	A 2-component low viscosity MMA based primer for filled asphalt and bitumen substrates.	Used for priming asphalt or bitumen screeds prior to the installation of Flowfast resins.
Flowfast Ceramic / Metal Primer	A 2-component low viscosity MMA based primer for metal and ceramic tile substrates.	Used for priming metal and ceramic substrates prior to the of Deckshield Rapide or Flowfast resins. Not suitable for non-ferrous metals and Zinc.
Flowfast Damp Primer	A 2-component low viscosity MMA based primer designed for damp cementitious substrates.	Used for priming damp concrete and screeds prior to the installation of Deckshield Rapide or Flowfast resins.
Flowfast Standard Binder	A 2-component, clear, medium viscosity MMA based binder for Flowfast floor coatings.	Used as a binder, primarily in Flowfast systems with decorative aggregates and flakes.
Flowfast SL Binder	A 2-component, clear, medium viscosity MMA based binder with improved flow properties for self smoothing Flowfast floor coatings.	Used only as part of the Flowfast SL system.
Flowfast Flexible Binder	A 2-component, clear, medium viscosity MMA based elasticized binder for use with Flowfast floor coatings.	Used as a binder in the formulation of flexible membranes and coating systems that are to be exposed to sub zero temperatures.
Flowfast Hot Water / Oil Binder	A 2-component, clear, medium viscosity MMA based binder for Flowfast floor coatings.	Used as a binder in applications exposed to hot water, fats and oils, primarily in Flowfast systems using decorative quartz.
Flowfast Cove Mix	A 2-component, clear, thixotropic MMA based binder for cove details.	Used with Flowfast resins containing quartz aggregates as a binder on cove details. Systems using Flowfast Cove Mix must always be treated with a Flowfast sealer.
Flowfast Standard Seal	A 2-component, UV-resistant, low viscosity MMA based sealer for Flowfast floor coatings.	Used as a general purpose sealer for smooth or lightly textured profiles, primarily in Flowfast systems with decorative aggregates and flakes.
Flowfast Flexible Seal	A 2-component, elastified, UV-resistant, low viscosity MMA based sealer for Flowfast floor coatings.	Used on elasticised Flowfast floor coatings or for outdoor applications.
Flowfast Hot Water / Oil Seal	A 2-component, clear, medium viscosity MMA based sealer for Flowfast floor coatings.	Used as a sealer in applications exposed to hot water, fats and oils, primarily in Flowfast systems using decorative quartz.
Flowfast Cleaner	A clear liquid smoothing aid for the application of Flowfast mortar coatings.	Used to moisten the trowel during application of Flowfast mortar coatings. The product is also an excellent agent for cleaning application tools.
Flowfast F1 Mortar Standard*	A 2-component, ready to use, repair mortar, based on MMA resin - designed for cementitious substrates that have a RH up to 97% (to BS 8204).	Used to repair damage, holes and imperfections in concrete substrates. Can be used in machine bases, joint arises, drill and bolt holes.

* For application temperatures below 0°C, use Flowfast F1 Mortar Cold Grade (0 to -25°C).
(For full product data information, please contact your local Flowcrete office).

ENSURING

sustainability



"The Flowcrete Group is committed to developing our operations in a sustainable manner and has a holistic approach to producing environmentally friendly flooring materials. This means that rather than just focussing on environmental issues, all decision making considers the environmental, social and economic impact of Flowcrete's flooring materials, manufacture and supply in order to improve our Company's contribution to addressing the important issues our society faces today."

"Flowcrete's Flowfast range is an environmentally pro-active flooring solution which is not only solvent free but does not release any VOC's (volatile organic compounds) to atmosphere. Additionally, Flowfast is packaged where possible in bulk and delivered to site in recyclable containers."

"We recognise that adopting a sustainable approach across all our operations throughout the world is the only way that we can truly improve our Company's contribution to society in this arena. By doing so, Flowcrete's contribution to sustainability will be significant and tangible."

Mark Greaves
Managing Director
Flowcrete Group Ltd

Flowfast Rapid Transit.



Flowcrete's hard-wearing, high-performance flooring technology is gaining speed in a variety of commercial and industrial market sectors throughout the world.



FLOWFAST - fast track transformations

Manchester Airport, UK.

Product: Flowfast Terrosso

A bespoke floor finish from Flowcrete - made up of a creative blend of colour and texture - has been applied in just one weekend at Manchester International Airport, where over 2000m² of Flowfast Terrosso have been installed in the Outbound Control Department located in Terminal 1.

Around 15,000 passengers go through Terminal 1's Security Search Area each day, but the unique qualities of Flowfast Terrosso mean the floor's stylish design and appeal can withstand the high footfall levels.

Flowfast Terrosso offers good slip resistance, can withstand thermal shock and impact, and is hardwearing. It's seamless finish also delivers a hygienic flooring surface that is both easy to clean and maintain in an environment that is used round-the-clock.



Manchester Airport, UK.

NASA Space Center, USA.

Product: Flowfast Quartz

Flowcrete's speedy resin system, Flowfast Quartz Scatter, has provided a fast track flooring solution for NASA's Johnson Space Center based in Houston, Texas.

Close to 14,000m² of the rapid cure acrylic resin system, Flowfast, have been installed in all exterior walkways surrounding the Mission Control complex. Flowcrete's state-of-the-art surfaces were also used in the Saturn One Rocket building, made famous for housing the Saturn One Rocket used to send the Apollo space craft into outer space.

Flowcrete was able to fully demonstrate the flexibility of its speediest flooring solution by creating a bespoke and eye-catching logo at ground-level in NASA's distinctive livery.



NASA, USA.

To find further information on FLOWFAST or any of our specialist flooring systems visit:

www.flowcrete.co.uk



Flowcrete around the world

Manufacturing Centres

UK	Flowcrete UK Ltd	Tel: +44 1270 753 000	Fax: +44 1270 753 333	Email: uk@flowcrete.com
Sweden	Flowcrete Sweden AB	Tel: +46 42 600 07 00	Fax: +46 42 15 50 90	Email: sweden@flowcrete.com
India	Flowcrete India Pvt Ltd	Tel: +91 44 4202 9831	Fax: +91 44 4202 9832	Email: india@flowcrete.com
Malaysia	Flowcrete Asia Sdn Bhd	Tel: +60 3 6277 9575	Fax: +60 3 6277 4645	Email: malaysia@flowcrete.com
South Africa	Flowcrete SA (Pty) Ltd	Tel: +27 31 461 3411	Fax: +27 31 461 3475	Email: southafrica@flowcrete.com
USA	Flowcrete North America Inc.	Tel: +1 936 539 6700	Fax: +1 936 539 6701	Email: usa@flowcrete.com
Belgium	Flowcrete Belgium	Tel: +32 157 569 27	Fax: +32 157 528 94	Email: belgium@flowcrete.com

Sales Centres

Australia	Flowcrete Australia Pty Ltd	Tel: +61 7 3205 7115	Fax: +61 7 3205 3116	Email: australia@flowcrete.com
Baltic States	Flowcrete Baltics	Tel: +37 1 2864 4666	Fax: +48 22 879 8918	Email: latvia@flowcrete.com
Canada*	Flowcrete Canada	Tel: +1 936 539 6700	Fax: +1 936 539 6701	Email: canada@flowcrete.com
China	Flowcrete China	Tel: +86 10 8472 1912	Fax: +86 10 8472 1942	Email: china@flowcrete.com
Denmark	Flowcrete Sweden AB	Tel: +45 3155 7882	Fax: +46 42 15 50 90	Email: denmark@flowcrete.com
France	Flowcrete France SAS	Tel: +33 344 588 976	Fax: +33 344 587 386	Email: france@flowcrete.com
Hong Kong	Flowcrete (Hong Kong) Ltd	Tel: +85 2 2795 0478	Fax: +85 2 2795 4842	Email: hongkong@flowcrete.com
Indonesia	Flowcrete Indonesia	Tel: +62 21 252 3201	Fax: +62 21 252 0720	Email: indonesia@flowcrete.com
Mexico*	Flowcrete Mexico	Tel: +1 936 539 6700	Fax: +1 936 539 6701	Email: mexico@flowcrete.com
Norway	Flowcrete Norway AS	Tel: +47 6486 0830	Fax: +47 6486 0831	Email: norway@flowcrete.com
Poland	Flowcrete Polska Sp. z o.o.	Tel: +48 22 879 8907	Fax: +48 22 879 8918	Email: poland@flowcrete.com
Romania*	S.C. Flowcrete Romania s.r.	Tel: +40 374 00 80 78	Fax: +40 21 255 03 15	Email: romania@flowcrete.com
Russia*	Flowcrete RUS	Tel: +7 (495) 661 62 68	Fax: +7 (495) 661 62 68	Email: rus@flowcrete.com
South Korea*	Flowcrete Corporation	Tel: +82 2 2649 3874	Fax: +82 2 2649 3878	Email: southkorea@flowcrete.com
Thailand	Flowcrete Thailand	Tel: +66 2530 9611	Fax: +66 2530 9610	Email: thailand@flowcrete.com
UAE	Flowcrete Middle East FZCO	Tel: +97 14 886 4728	Fax: +97 14 886 4582	Email: uae@flowcrete.com
Vietnam	Flowcrete Vietnam	Tel: +84 8 38216561	Fax: +84 8 3821 6501	Email: vietnam@flowcrete.com

*Partner Company

Whilst every care has been taken to ensure that the information included in this document was accurate at the time of printing, Flowcrete reserve the right to change product specifications at any time without prior notice. The photographs and colours reproduced in this publication are within the constraints of the printing process and are not to be used for matching purposes. All photographs are used for approximate representation only and may not show the actual products on offer. E&OE.