

CIRCULAR SINGLE BOX FANS - SABINA EC (COMPACT)



ENVIRONMENT
ECONOMICAL
EXPERTISE

FEATURES

- 125 mm to 400 mm
- Air flow up to 0.72 m³/s
- Static pressures up to 850 Pa

ELECTRICAL SUPPLY

220-240V/50Hz/1φ

TEMPERATURE RANGE

Up to 60°C (depending on size see table for more information)

SIZES

125, 150, 200, 250, 315 and 400.

CONSTRUCTION

The Sabina has casing which is galvanized and made from sheet steel. Within the unit there is acoustic insulation made from fibre glass with a thickness of 40 mm.

MOUNTING

The integral fan allows the Sabina EC Compact to be installed in any position, whether it's a wall, ceiling installation or inverted for bottom access.

IMPELLER

External rotor motors are used in protection class IP44/54 with humidity protection, ball bearing-mounted and with built-in thermal contacts for motor protection. In the Evolution version, the impeller is forward curved and has double-sided inlets. The impellers are mounted directly on the rotors of the external rotor motors and are dynamically balanced on two levels with the rotor according to quality level G2.5 as per DIN ISO 1940.

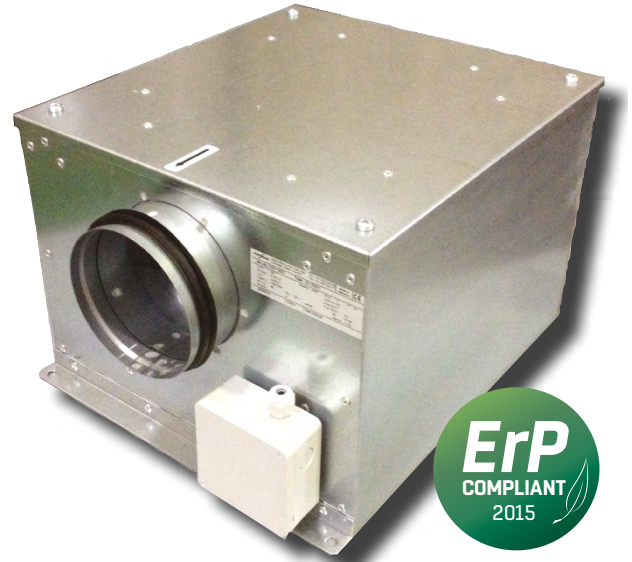
MOTORS

This product incorporates EC motor technology which is designed to optimise energy savings. Motor speed control is via a 0-10v signal giving a high degree of controllability.

The electrical connection is made through a terminal box with protection class IP44.

SPEED CONTROLLERS

All units are fully speed controllable using our 2nd generation integral intelligent fan controller or 0-10 volt potentiometer.



PRODUCT CODE

SABINA EC 125 (Compact)

- SABINA - Product Name
- EC - EC Motor
- 125 = Diameter size

ACCESSORIES (Pages 143-150) - CONTROLLERS (Pages 219-267)

The range of accessories include duct clamps, filters, guards, dampers, silencers and mounting brackets. A quick reference guide is shown below.



CFC



BDS



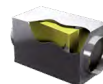
FLS



BDER



Controls
Potentiometer



CFB



iFan



PRODUCT AND ELECTRICAL DETAILS

220-240V/50HZ/1 ϕ

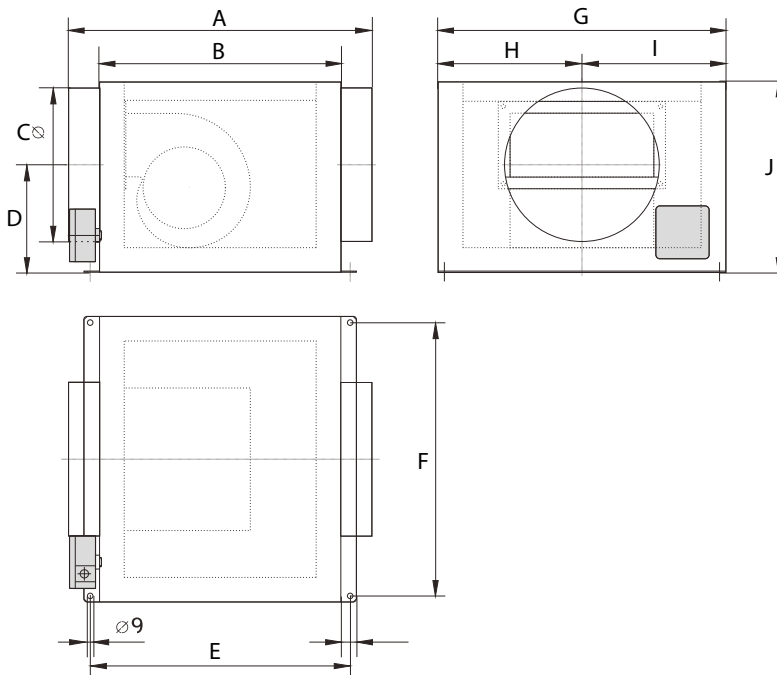


Product Code	Product Number	Speed	Motor Frame	Electrical Current			Wiring Diagrams	**Speed Controllers	Maximum Operating Temp°C	Breakout Sound Level db(A) (3m)*
				Motor (kW)	Full Load Current (A)	Starting Current (A)		Potentiometer		
Sabina EC 125MM (Compact)	ZE125003	2600	Integral	0.065	0.45	0.45	CD3026	SDPV	50	20
Sabina EC 160mm (Compact)	ZE160003	2400	Integral	0.12	0.81	0.81	CD3026	SDPV	50	25
Sabina EC 200mm (Compact)	ZE200003	2470	Integral	0.16	1.14	1.14	CD3026	SDPV	50	30
Sabina EC 250mm (Compact)	ZE250004	2540	Integral	0.22	0.95	0.95	CD3026	SDPV	50	30
Sabina EC 315mm (Compact)	ZE315003	2550	Integral	0.33	1.9	1.9	CD3026	SDPV	50	36
Sabina EC 355mm (Compact)	ZE355003	2700	Integral	0.4	2.3	2.3	CD3026	SDPV	50	37
Sabina EC 400mm (Compact)	ZE400003	2600	Integral	0.65	3.7	3.7	CD3026	SDPV	50	47

*Sound power levels are average dBA at 3 metres distance over sphere, under free field conditions and are presented for comparative purposes only. Values shown are those at the mid-point of the performance curve. For ErP efficiency ratings and grades please refer to our Fan Selector for more information.

DRAWINGS AND DIMENSIONS

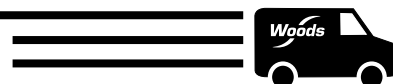
SABINA EC 125, 160, 200, 250, 315, 355 AND 400



Size	A	B	C	D	E	F	G	H	I	J	Weight (kg)
Sabina 125	400	300	122	97	332	270	300	205	170	260	11
Sabina 150	460	360	160	185	390	320	340	170	170	280	12.5
Sabina 160	460	360	160	185	390	320	340	170	170	280	12.5
Sabina 250 L	490	390	250	175	420	445	465	233	233	315	18.5
Sabina 315	680	580	315	228	610	575	595	210	385	425	40
Sabina 355	680	580	355	227.5	610	575	595	230	365	425	40
Sabina 400	680	650	400	250	610	625	645	250	395	475	46

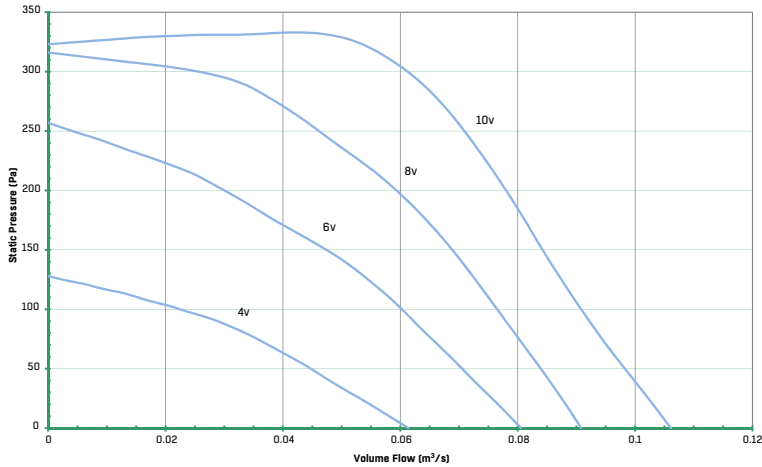
All dimensions shown in mm

Products in **bold** are available from our UK Distributors on next day delivery, if ordered by 4pm. Please call to confirm availability on 01206 222 555.

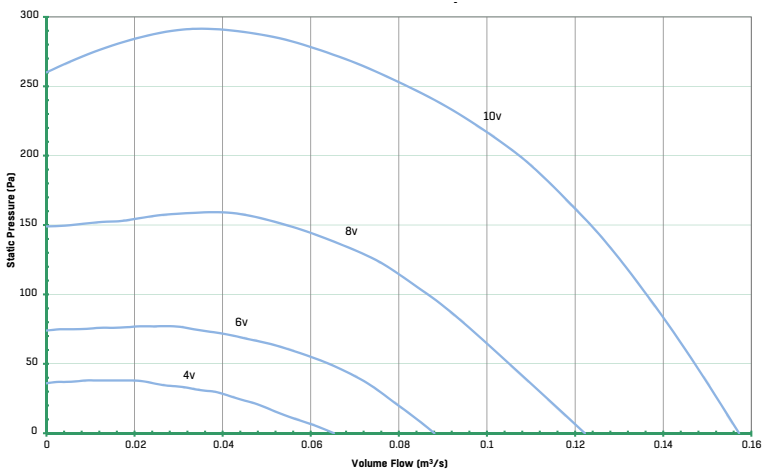


PERFORMANCE CHARTS

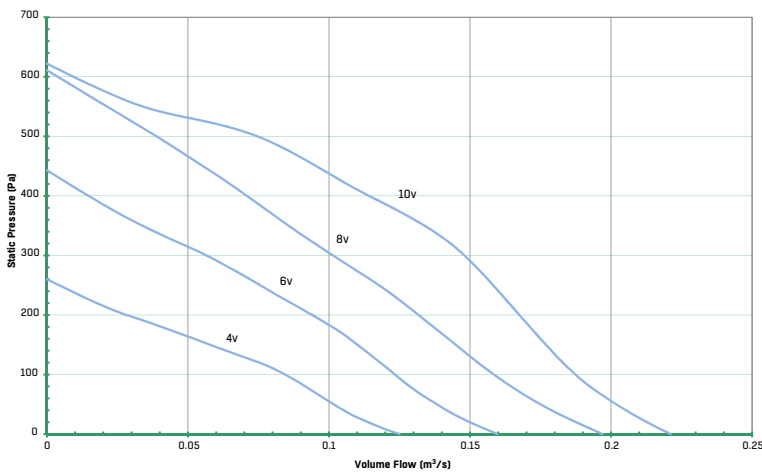
SABINA EC - 125 (COMPACT) - ZE125003



SABINA EC - 160 (COMPACT) - ZE160003



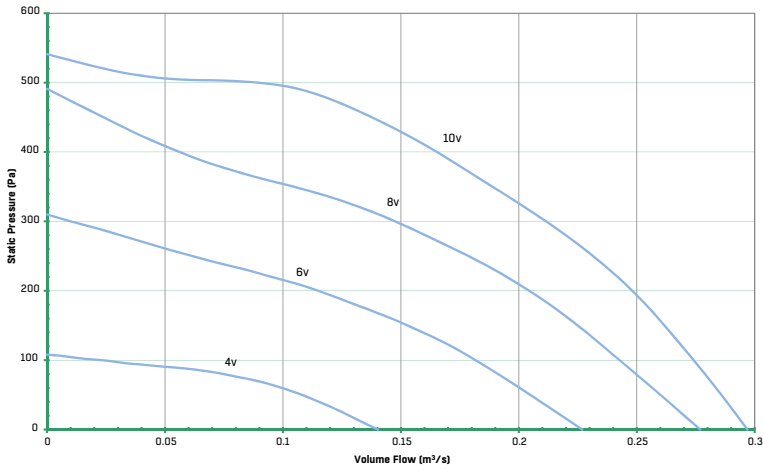
SABINA EC - 200 (COMPACT) - ZE200003



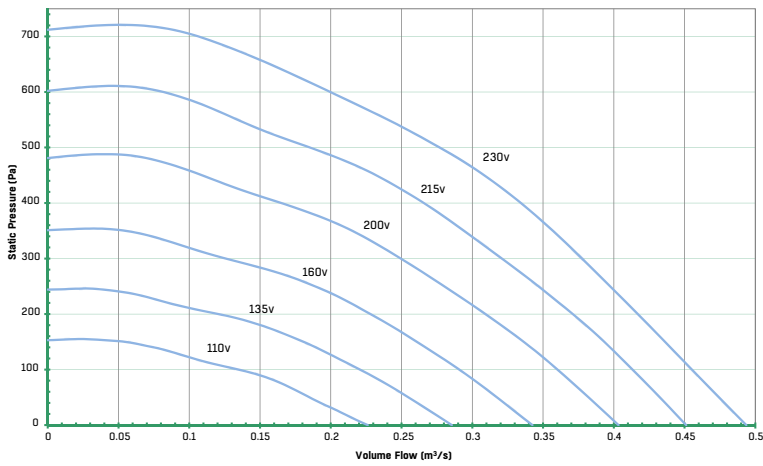


PERFORMANCE CHARTS

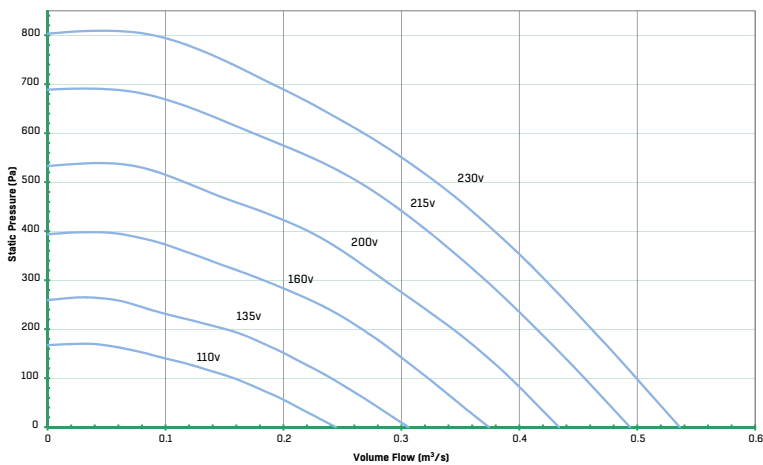
SABINA EC - 250 (COMPACT) - ZE250004



SABINA EC - 315 (COMPACT) - ZE315003

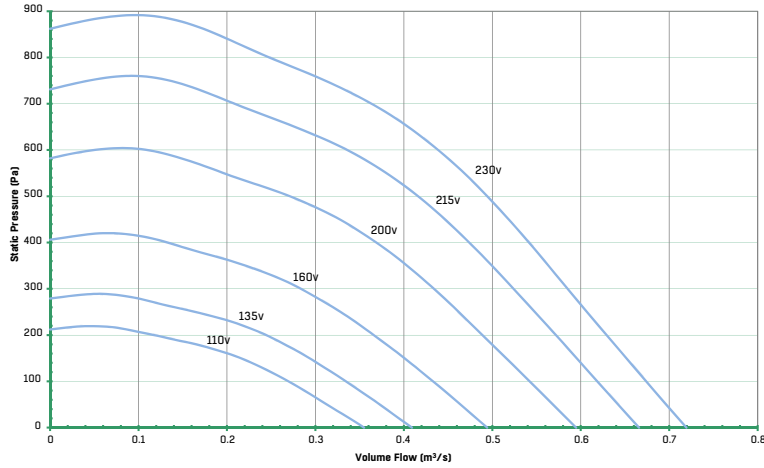


SABINA EC - 355 (COMPACT) - ZE355003



PERFORMANCE CHARTS

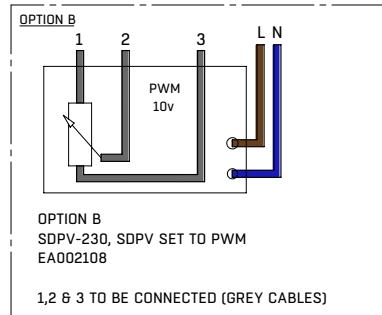
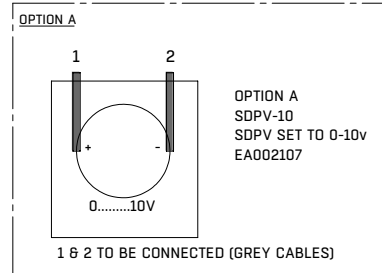
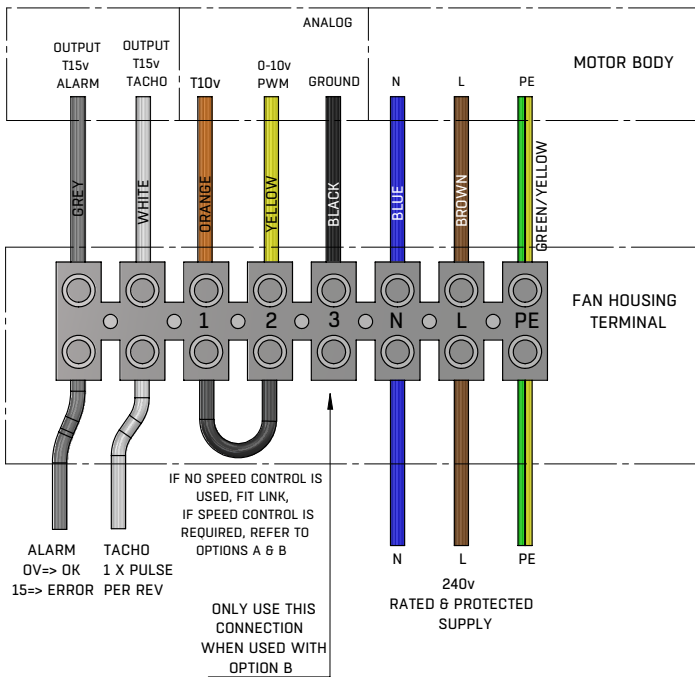
SABINA EC - 400 (COMPACT) - ZE400003





WIRING DIAGRAM - SABINA EC (COMPACT)

CD3026



ALSO AVAILABLE FROM THE **WOODS** RANGE



**JMv
Aerofoil**



MaXfan²



**JM
Aerofoil**



**HT JM
Aerofoil**



**JM
Bifurcated**



Series 33



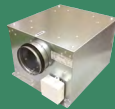
Plate Fans



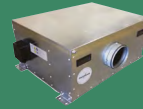
**Cased &
Plate Axial
Accessories**



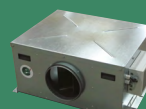
Tube Fans



**Sabina EC
Box Fans**



**Daisho AC
Box Fans**



**Daisho EC
Box Fans**



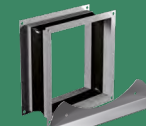
Estoc



Estoc Targe



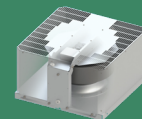
Estoc EC



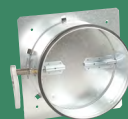
**Tube & Box
Accessories**



**Roof Units
Horizontal**



**Roof Units
Vertical**



**Fire
Dampers**



**Iris
Dampers**



Fire Valves



**Valves
Supply KE**



**Valves
Extract KK**



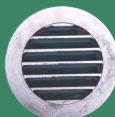
**Valves
Exhaust
VEFS**



**Nozzles DK
& DR**



**Louvres/
Cowls
EYMA and
DYMA**



**External
Louvres
USAV**



Controllers

Selected products available from our UK Distributors on next day delivery, if ordered by 4pm. Please call 01206 222 555 for more information.

