

## CIRCULAR TWIN BOX FANS - DAISHO EC

### FEATURES

- 125mm to 1000mm
- Air flow up to 3.5 m<sup>3</sup>/s
- Static pressures up to 1250 Pa
- Suitable for variable or constant pressure systems
- Twin Fans for run and standby operation
- Includes BMS interface as standard

### ELECTRICAL SUPPLY

220-240V/50Hz/1φ  
380-420V/50Hz/3φ (450, 630 & 1000 size only)

### TEMPERATURE RANGE

Up to 60°C (depending on size see table for more information)

### SIZES

125, 150, 200, 250, 315, 450, 630 and 1000.

### CONSTRUCTION

Casings are manufactured from pre-galvanised sheet steel and are carefully designed to provide a strong and rigid casing to minimise vibration. Daisho EC Fan units have circular inlet and outlet spigots with a double-lip neoprene seal to minimise air leakage. The units are internally lined with re-engineered, high quality acoustic foam with an erosion proof facing to prevent the carry over of fibres into the air stream. Units are designed for either internal or external mounting as standard. Fläkt Woods offers circular spigots for sizes up to 630 diameter as standard. The largest unit has a 1000 x 600mm.

### MOUNTING

Suitable for both horizontal and vertical mounting (suitable for vertical mounting air flow up only, up to size 250).

### IMPELLER

Impellers High efficiency backward curved centrifugal impeller design.

### MOTORS

This product incorporates EC Motor technology which is designed to optimise energy savings. Motor speed control is via a 0-10v signal giving a high degree of controllability. Operating temperature range from -25°C to +65°C.

### SPEED CONTROLLERS

All units are fully speed controllable using our '2nd generation' integral intelligent fan controller. The 3 phase Daisho EC Fan variant is fitted with an electrical isolator as standard.

(The unit can be inverted for bottom access up to size 250)



ENVIRONMENT  
ECONOMICAL  
EXPERTISE



### PRODUCT CODE

DAISHO EC 125

- DAISHO - Product Name
- EC - EC Motor
- 125 = Diameter size

### ACCESSORIES (Pages 143-150) - CONTROLLERS (Pages 219-267)

The range of accessories include duct clamps, filters, guards, dampers, silencers and mounting brackets. A quick reference guide is shown below.



CFC



BDS



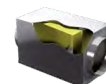
FLS



BDER



CIG



CFB



iFan

\*fitted as standard



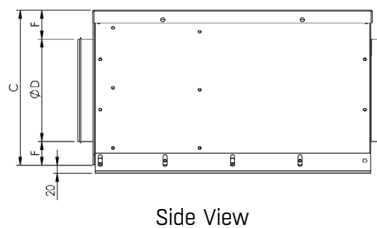
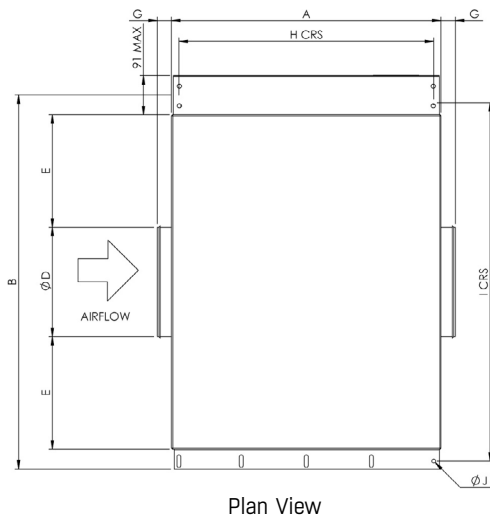
## PRODUCT AND ELECTRICAL DETAILS

Product Code	Product Number	Voltage	Motor Frame	Electrical Supply	Electrical Current			Wiring Diagrams	Maximum Operating Temp°C	Breakout Sound Level db(A) (3m)*
					Motor (kW)	Full Load Current (A)	Starting Current (A)			
DAISHO EC 125	EC012211	10	Integral	220-240 V/50 Hz/1 Ph	0.83	0.75	0.75	CD3009	60	<20
DAISHO EC 150	EC015211	10	Integral	220-240 V/50 Hz/1 Ph	0.83	0.75	0.75	CD3009	60	<20
DAISHO EC 200	EC020211	10	Integral	220-240 V/50 Hz/1 Ph	0.082	0.7	0.7	CD3009	60	<20
DAISHO EC 250	EC011120	10	Integral	220-240 V/50 Hz/1 Ph	0.54	3.39	3.39	CD3009	60	48
DAISHO EC 315	EC021120	10	Integral	220-240 V/50 Hz/1 Ph	0.505	3.1	3.1	CD3009	40	46
DAISHO EC 450	EC031120	10	Integral	220-240 V/50 Hz/1 Ph	0.64	2.9	2.9	CD3009	60	45
DAISHO EC 450	EC043120	10	Integral	380-420 V/50 Hz/3 Ph	1.01	1.6	1.6	CD3010	60	50
DAISHO EC 630	EC053120	10	Integral	380-420 V/50 Hz/3 Ph	2.8	4.35	4.35	CD3010	40	56
DAISHO EC 1000	EC063120	10	Integral	380-420 V/50 Hz/3 Ph	2.9	4.65	4.65	CD3010	40	56

\*Sound power levels are average dBA at 3 metres distance over sphere, under free field conditions and are presented for comparative purposes only. Values shown are those at the mid-point of the performance curve. For ErP efficiency ratings and grades please refer to our Fan Selector for more information.

## DRAWINGS AND DIMENSIONS

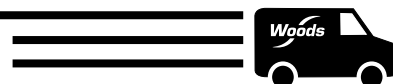
### DAISHO EC - 125, 150, 200, 250, 315 AND 450



Size	A	B	C	ØD	E	F1	F2	G	H CRS	I CRS	ØJ	Weight (kg)
DAISHO EC 125	412	626	280	125	250	72	80	40	380	610	10	20
DAISHO EC 150	412	626	280	150	238	62	69	40	380	610	10	20
DAISHO EC 200	492	710	325	200	220	49	63	40	460	692	10	25
DAISHO EC 250	614	870	384	250	260	-	67	40	588	833	9	51
DAISHO EC 315	734	960	440	315	272.5	-	62.5	40	708	923	9	65
DAISHO EC 450	1054	1306	615	450	381.6	-	82.5	65	1028	1269	9	134

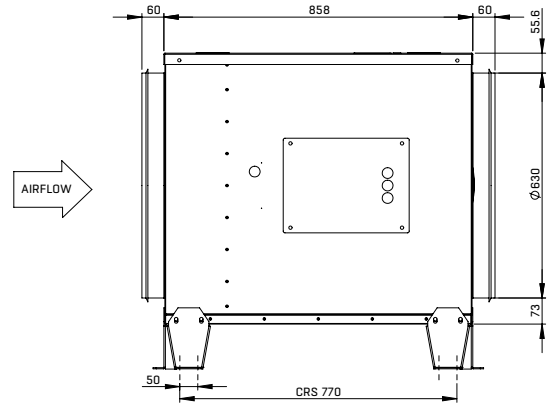
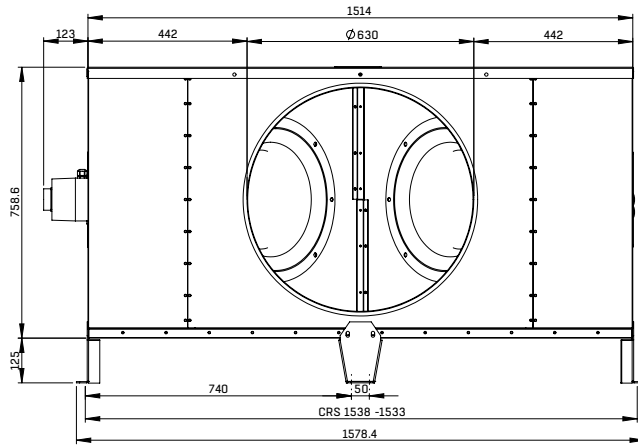
All dimensions shown in mm

Products in **bold** are available from our UK Distributors on next day delivery, if ordered by 4pm. Please call to confirm availability on 01206 222 555.



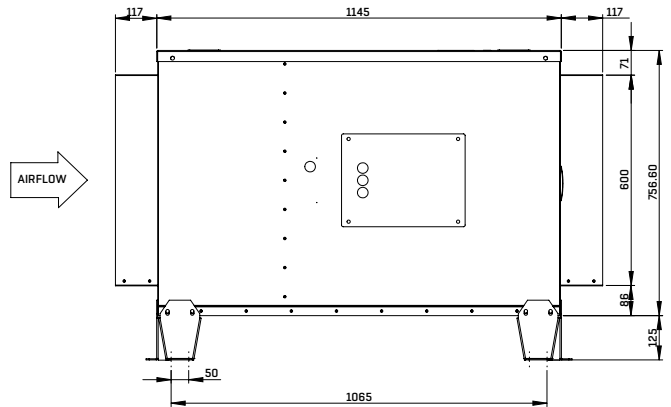
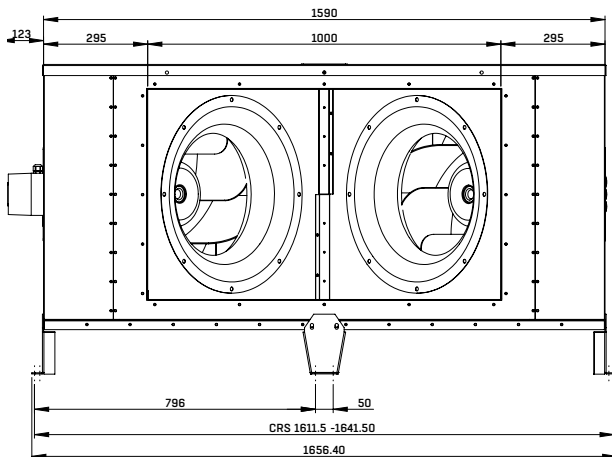
## DRAWINGS AND DIMENSIONS

### DAISHO EC - 630



Weight - 206 kg

### DAISHO EC - 1000



Weight - 221 kg

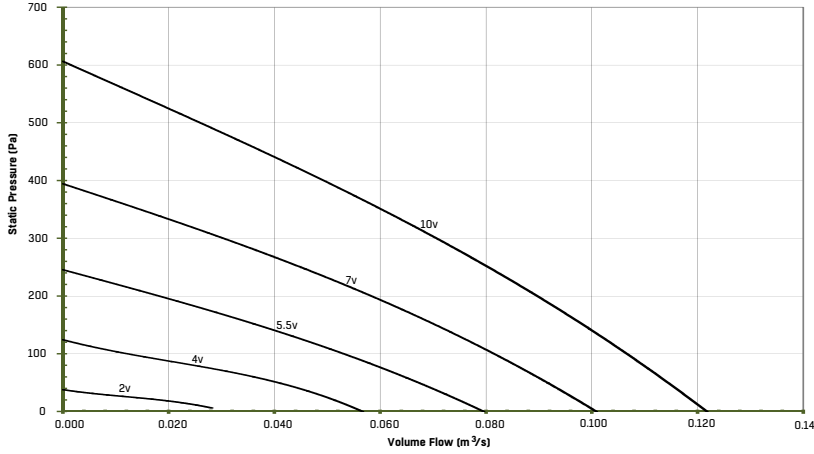
Note: Rectangular spigot

All dimensions shown in mm

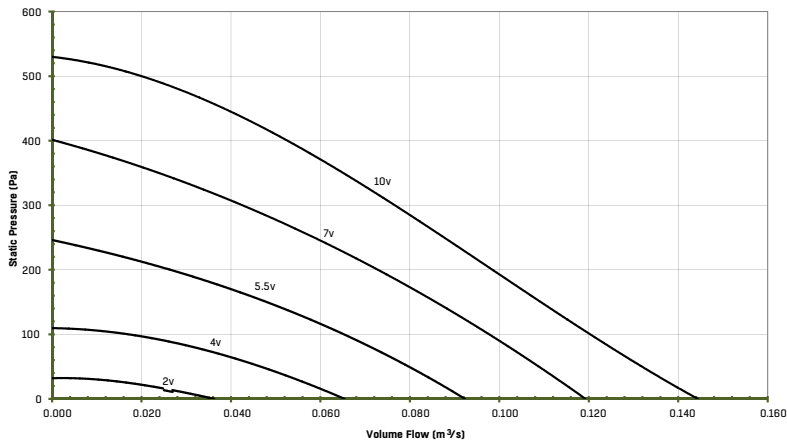


**PERFORMANCE CHARTS**

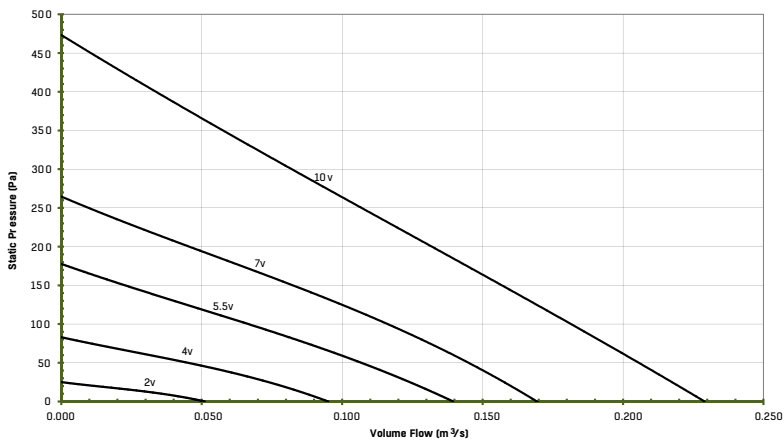
**DAISHO EC - 125 - EC012211**



**DAISHO EC - 150 - EC015211**

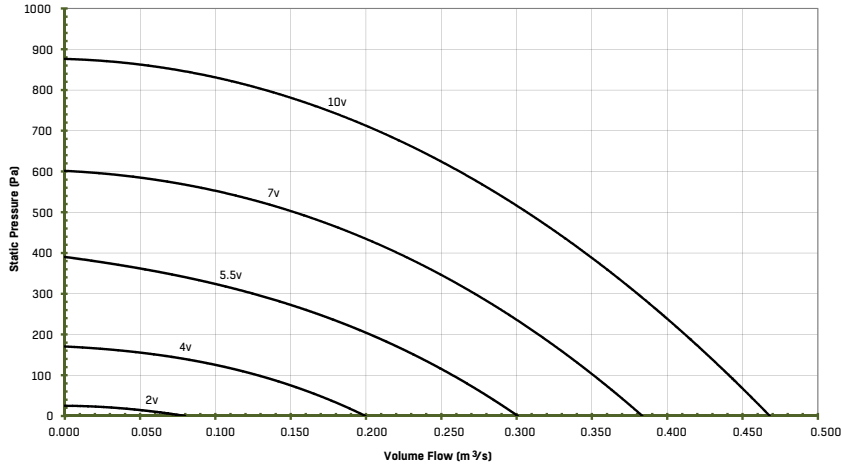


**DAISHO EC - 200 - EC020211**

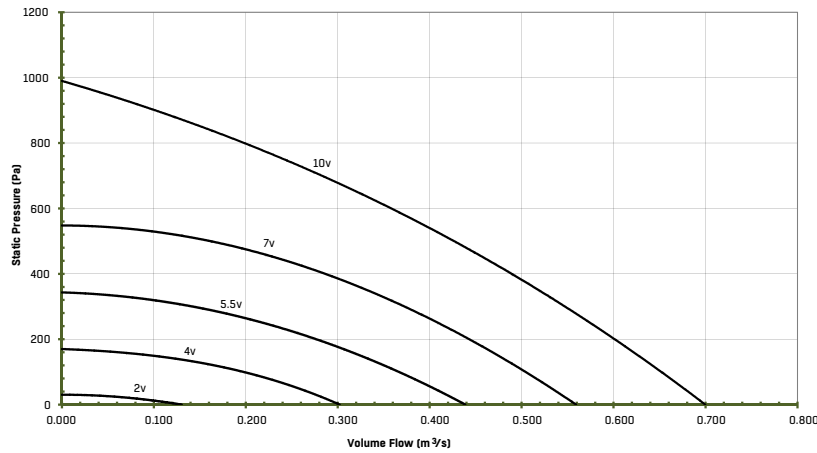


**PERFORMANCE CHARTS**

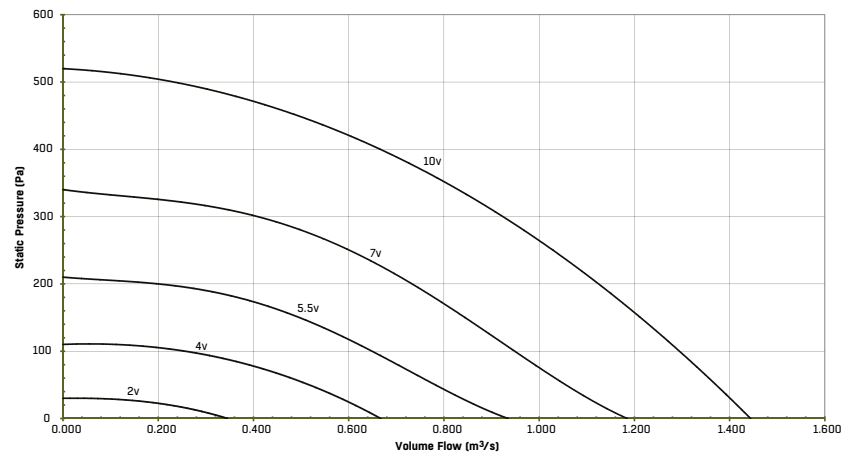
**DAISHO EC - 250 - EC01120**



**DAISHO EC - 315 - EC02120**



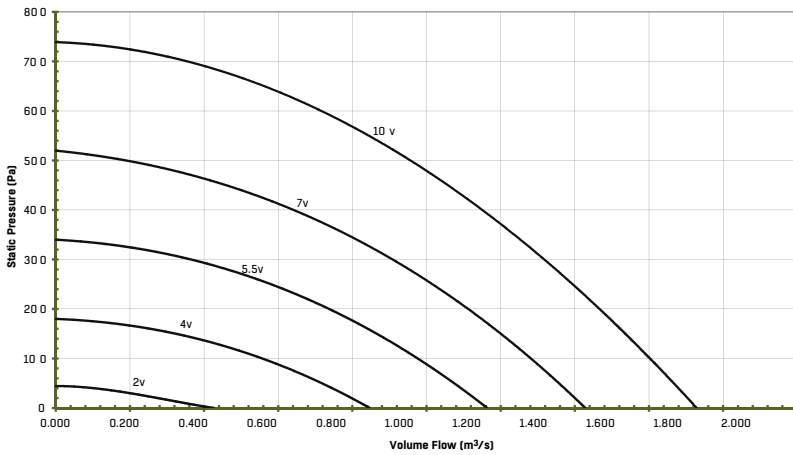
**DAISHO EC - 450 (SINGLE PHASE) - EC03120**



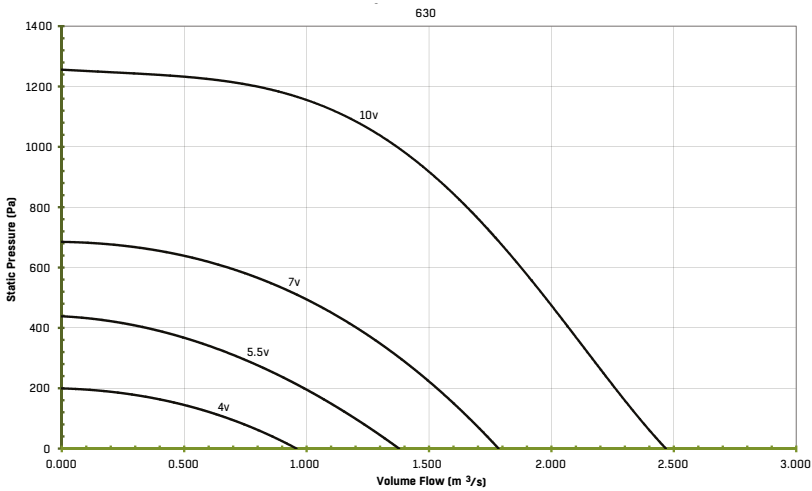


## PERFORMANCE CHARTS

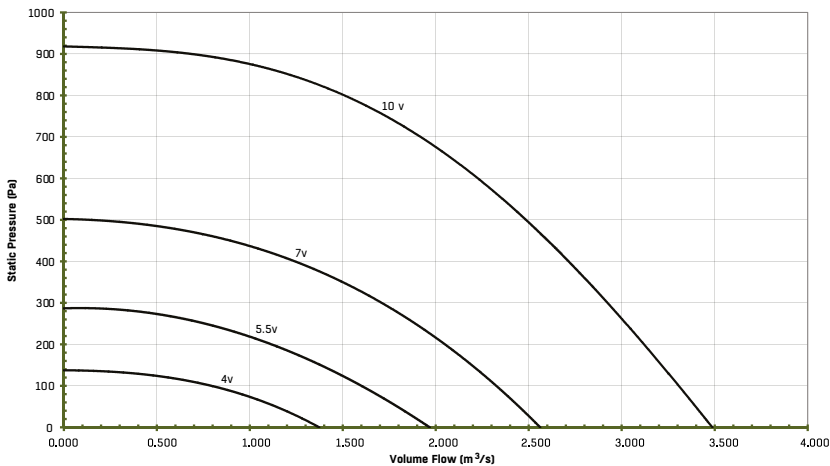
### DAISHO EC - 450 (THREE PHASE) - EC043120



### DAISHO EC - 630 (THREE PHASE) - EC053120



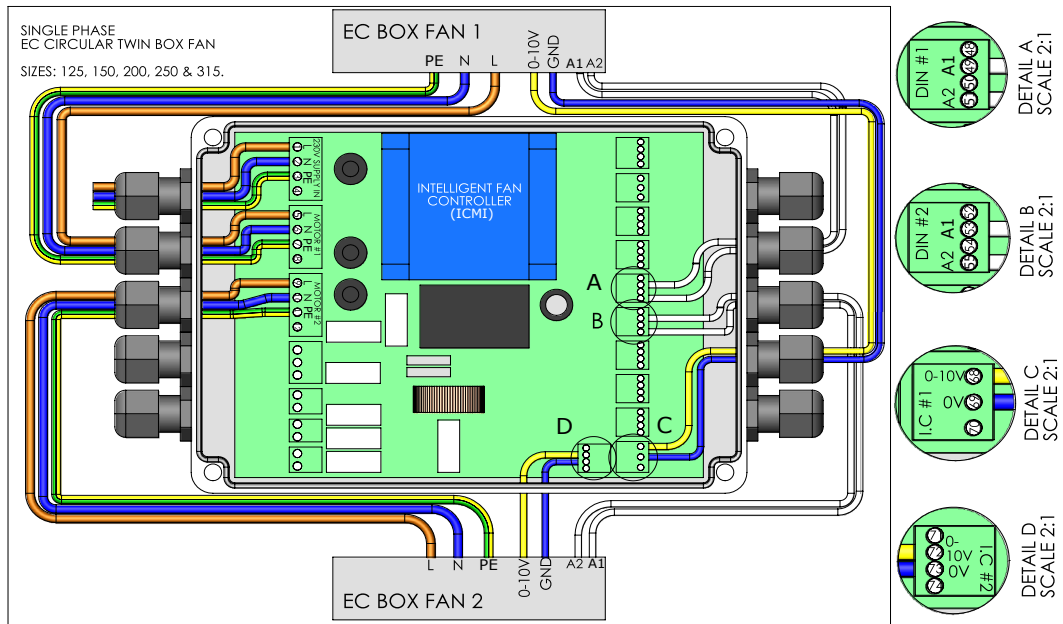
### DAISHO EC - 1000 (THREE PHASE) - EC063120



## WIRING DIAGRAMS - DAISHO EC

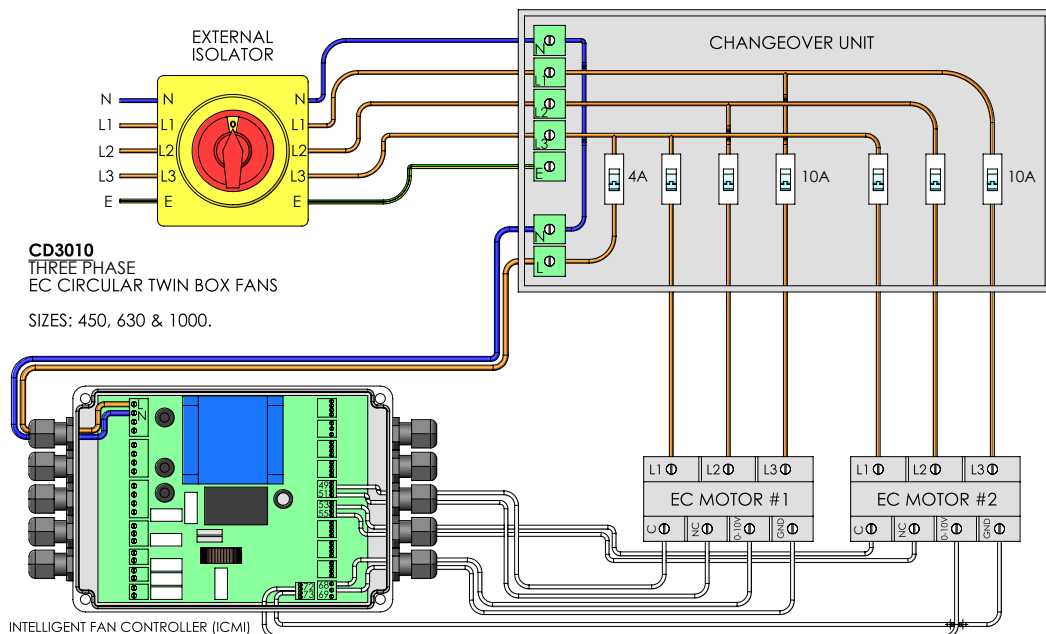
### 1PH DAISHO EC (SIZES 125, 150, 200, 250, 315 AND 450)

#### CD3009



### 3PH DAISHO EC (SIZES 450, 630 AND 1000)

#### CD3010



# ALSO AVAILABLE FROM THE WOODS RANGE



**JMv  
Aerofoil**



**MaXfan²**



**JM  
Aerofoil**



**HT JM  
Aerofoil**



**JM  
Bifurcated**



**Series 33**



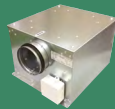
**Plate Fans**



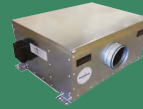
**Cased &  
Plate Axial  
Accessories**



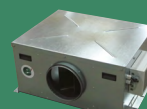
**Tube Fans**



**Sabina EC  
Box Fans**



**Daisho AC  
Box Fans**



**Daisho EC  
Box Fans**



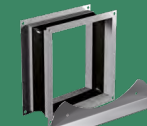
**Estoc**



**Estoc Targe**



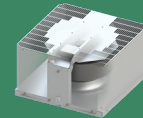
**Estoc EC**



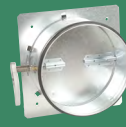
**Tube & Box  
Accessories**



**Roof Units  
Horizontal**



**Roof Units  
Vertical**



**Fire  
Dampers**



**Iris  
Dampers**



**Fire Valves**



**Valves  
Supply KE**



**Valves  
Extract KK**



**Valves  
Exhaust  
VEFS**



**Nozzles DK  
& DR**



**Louvres/  
Cowls  
EYMA and  
DYMA**



**External  
Louvres  
USAV**



**Controllers**

Selected products available from our UK Distributors on next day delivery, if ordered by 4pm. Please call 01206 222 555 for more information.

