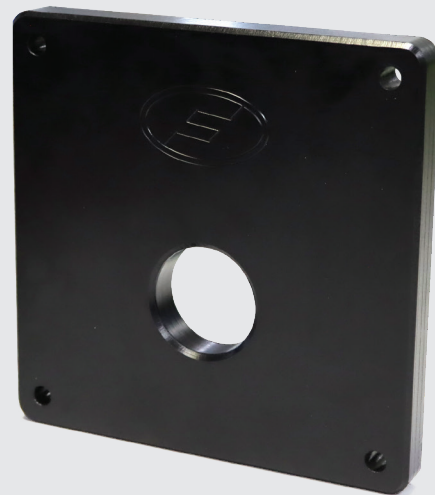


# Orifice Plates

- Control and regulate fluid flow rate
- HDPE construction to withstand harsh environments
- Precision machined for optimum performance
- Simple & easy installation
- Low maintenance

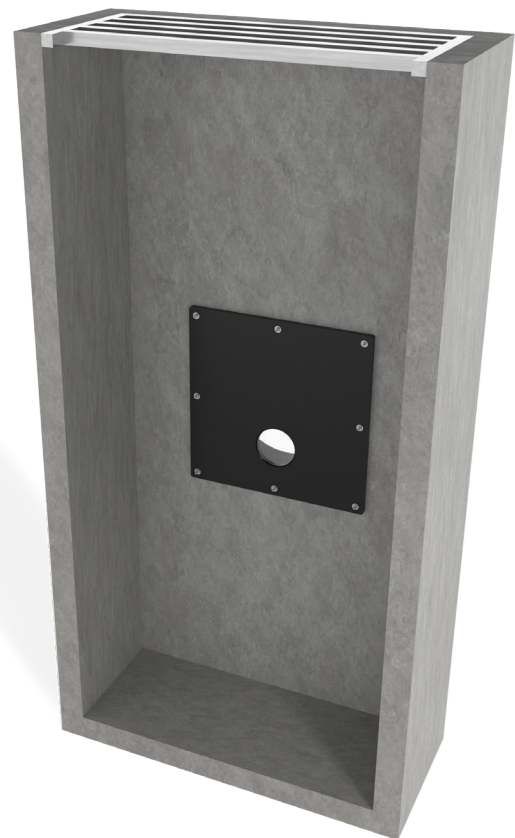


Fernco design and manufacture Orifice Plates from High-Density Polyethylene (HDPE) with a standard size range from DN100 to DN600 designed to regulate or restrict the flow of water.

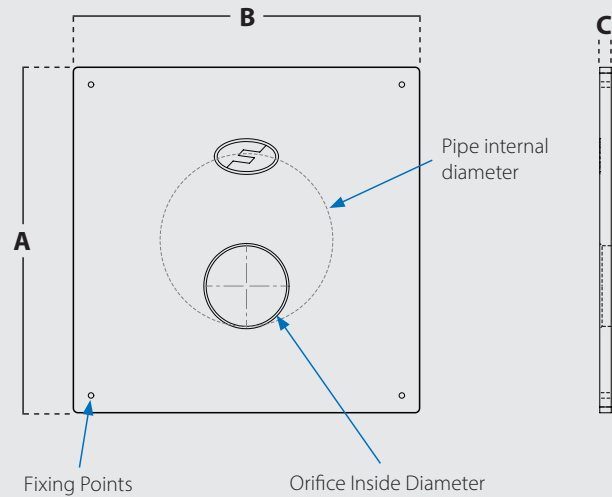
Fernco offer the flexibility to supply orifice plates based on site specifications, technical drawings, or flow rates and manufacture each orifice plate to meet the specific hydrostatic conditions required for optimal performance.

Manufactured in the UK using high quality grade 500 HDPE Fernco orifice plates offer exceptional durability, corrosion resistance, and chemical inertness, making them ideal for use in a wide range of applications where precise flow control is essential.

Fernco orifice plates are supplied with an EPDM sponge seal, chemical capsules and relevant 316 stainless steel wall mounting kit.



Product Code	OPXXX
Description	Fernco Orifice Plates
Size Range	DN100 to DN600 <i>bespoke sizes available on request</i>
Material	High-Density Polyethylene (HDPE-500) 1.4401 (316) Stainless Steel
Standards	Conforms to BS EN ISO 5167:2022



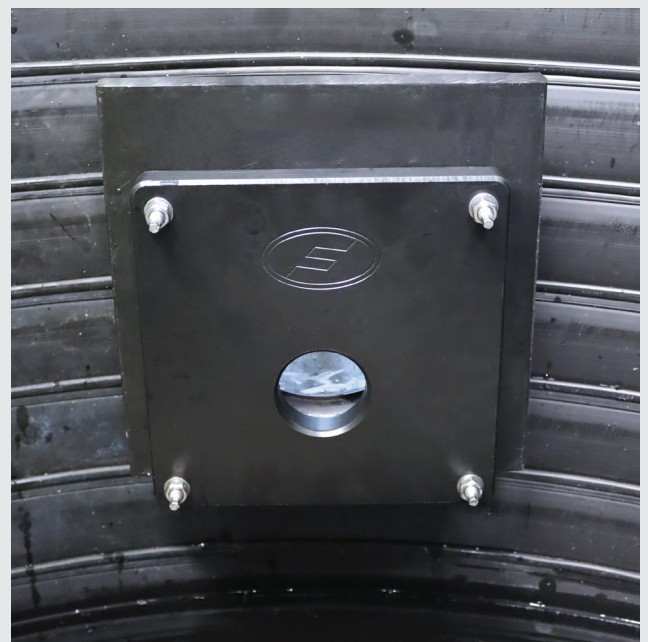
Product Code	Pipe Internal Diameter	A (mm)	B (mm)	C (mm)	Mounting Bolts / Capsules	EPDM Tape (mm)
OP100	100mm	300	300	30	4xM8	1200
OP150	150mm	350	350	30	4xM8	1400
OP200	200mm	400	400	30	6xM8	1600
OP250	250mm	450	450	30	6xM8	1800
OP300	300mm	600	600	30	8xM8	2400
OP350	350mm	650	650	30	8xM8	2600
OP400	400mm	700	700	30	8xM8	2800
OP450	450mm	750	750	30	8xM8	3000
OP500	500mm	800	800	30	8xM8	3200
OP600	600mm	900	900	30	8xM8	3600

## **i** Manufactured to specification

All Orifice Plates are designed and manufactured to site requirements.

## Key features

- Creates a controlled flow restriction to achieve desired flow rates and system performance.
- Manufactured from robust HDPE ensures long-term reliability and performance in harsh environments.
- The precision machined orifice is carefully calculated to accurately control flow, minimise flow disturbances and pressure losses within piping systems.
- Resistant to a wide range of chemicals eliminating the risk of material degradation.
- Exceptional temperature stability to continue to operate in extreme cold or high-temperature environments.
- Designed for easy installation and retrofitting into existing piping systems. Fernco supplies chemical anchors to ensure a fit for purpose installation.
- The durable HDPE means the plate requires minimal maintenance and upkeep, reducing operational costs.



# Installation

## Installation Guide

1. Offer the Orifice Plate to the wall in the desired fixing position, ensuring the opening of the plate is level with the invert level of the pipe.
2. Mark the drill positions where the wall mounting holes are present and use a spirit level to make sure the Orifice Plate is level.
3. Remove the Orifice Plate and drill holes where marked using a suitable drill. Use a 10mm drill bit to drill holes to a depth of 80mm for the chemical capsules and bolts to be inserted into.
4. Clean debris away from the drilled holes and wall surface.
5. Insert the chemical capsules into the hole.
6. Using a suitable drill, drill the bolts provided into the holes and chemical capsules, until the depth of the hole has been reached.
7. Detach the drill from the bolt and remove excess residue from around the hole. Leave the chemical to cure, curing time is indicated in the table below.
8. Offer the Orifice Plate over the bolts, tighten on the supplied washers and nuts to the recommended torque of 4Nm.

## Mounting Sets

Orifice Plate	Product Code	Mounting Set Bolts	Chemical Capsules	Sealing Strip (m)
OP100	OPMS-01	4	4	3m
OP150				
OP200	OPMS-02	6	6	4m
OP250				
OP300	OPMS-03	8	8	6m
OP350				
OP400				
OP450	OPMS-04	8	8	8m
OP500				
OP600				

\*All orifice plates come with the mounting kit as standard. Additional Mounting kits can be supplied as per the above table.

## Wall Mounting Kit Installation Requirements

Bolt Size	Drill Bit Required	Drilled Depth	Recommended Tightening Torque
M8	10mm	80mm	4Nm

## Chemical Capsule Cure Time

Temp °C	-15 -- -10	-9 -- -5	-4 -- 0	+1 -- +5	+6 -- +10	+11 -- +20	+21 -- +30	+31 -- +40
Cure Time	30 h	16 h	10 h	45 min	30 min	20 min	5 min	3 min

# General Information

## Quality, Standards and Approvals

Fernco has been certified by the British Standards Institution (BSI) as a company of assessed capability, with a quality management system which meets the requirements of BS EN ISO 9001:2015

Fernco UK, part of a global group of companies, are the leaders in wastewater connection innovation; utilising the most advanced methods and techniques for precision-manufactured products, all of which comply with or exceed relevant British and European standards to ensure reliability and sustainability.

## Environment

Fernco operate Environmental Management Systems which are certified to ISO 14001: 2015.

## Supply

Fernco are proud members of the Builders Merchants Federation (BMF). All Fernco products are supplied through a national and global network of distribution and merchant partners. For stockist details, contact Fernco.

## Technical Support

Fernco have a team of product experts on hand to support all customers with technical support and advice.

Contact Fernco Technical Department:

Tel: +44 (0) 1226 344100

Email: [technical@fernco.co.uk](mailto:technical@fernco.co.uk)

## Enquiries

UK Sales:

Tel: +44 (0) 1226 340 888

Email: [sales@fernco.co.uk](mailto:sales@fernco.co.uk)

International Sales:

Tel: +44 (0) 1226 344 105

Email: [export.dept@fernco.co.uk](mailto:export.dept@fernco.co.uk)

