

# T-Line Cubicle Range

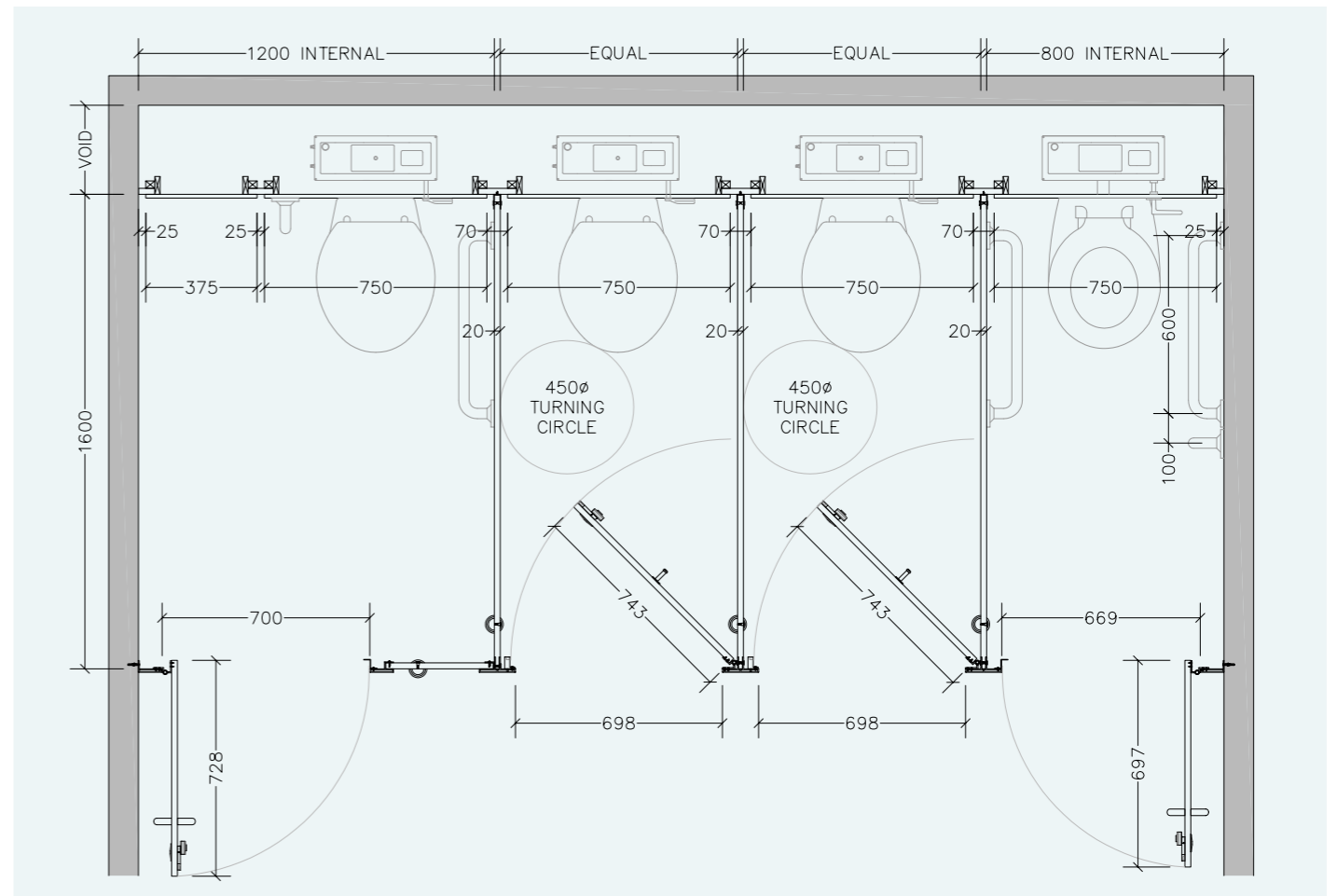
WASHROOMS FOR ALL ENVIRONMENTS



from **creation to installation...**  
you can rest assured

**excelsior**<sup>®</sup>  
washrooms for all environments

## Typical Layout



## Disability Discrimination Act (DDA) BS.8300

The building regulations make provisions for visual contrast between:

- Ironmongery and door faces.
- Some door faces and door edges  
- where doors are not self closing or are held open.
- Door faces and pilasters.
- Handrails and walls.
- Floors and walls.

Contrast visually is given as a difference in light reflectance value (LRV) between two surfaces of greater than 30 points. Excelsior offer a range of both Laminate and Ironmongery colour finishes to comply with these guidelines.

The act also gives guidelines for the minimum requirements for both size and the recommended hardware of Disabled and Ambulant cubicles.

**excelsior**<sup>®</sup>  
washrooms for all environments

Excelsior Panelling Systems Ltd  
Unit 2, Woodside Industrial Estate, Pedmore Road, Dudley, West Midlands, DY2 0RL

Tel: +44 (0)1384 267770 Fax: +44 (0)1384 482127  
E-mail: enquiries@excelsiorps.co.uk Web: www.excelsior-cubicles.co.uk



# The modern & minimalist cubicle solution.

The T-Line cubicle range has been created to meet the most discerning specifiers' requirements. Bringing a modern and minimalist feel to the washroom environment in the form of Extruded Satin Anodised Aluminium pilasters and headrail offering a true slimline appearance, this in conjunction with 20mm thick doors on our HPL option really does exceed all quality expectations.

## from creation to installation... you can rest assured

Excelsior have undertaken the manufacture, supply and installation of bespoke washroom products in all washroom environments since 1978. We have a wide selection of safe, attractive and reliable systems to suit all applications, from nursery schools right through to leisure centres and hospitals.

All levels of durability are catered for to meet the end users commercial constraints, combining innovation with practicality.

T-Line's specially designed extrusions allow all the doors to sit in the same plane. This system sits equally at home in many different environments from the most prestigious office or hotel development to education or healthcare projects alike.

Wall & duct panelling and fully framed vanity units can be supplied to complement this system.

The T-line range is available on a typical delivery period of 3-4 weeks from receipt of approved drawings and confirmation of all colour finishes.

Installation by Excelsior is strongly recommended but not essential as a full set of fixing instructions and technical information is provided with the system.

### Recommended Sectors:

- Commercial Offices
- Education
- Leisure
- Transport
- Healthcare



### T LINE 20mm HPL Cubicle

#### Specifications

##### Pilasters and Headrail:

- Extruded Aluminium Pilaster and Headrail profiles - SAA as standard
- Hybrid & Nickel powder finishes available upon request

##### Doors & Divisions Panel Specification:

- HPL bonded onto 18mm MR core
- 2mm ABS edge finish

##### Standard Dimensions:

- 2090mm overall height (including 150mm ground clearance) x 1500mm - 2000mm deep

##### Ironmongery:

- Rise & fall aluminium hinges - Ref: EXH-A20
- Recessed Indicator & Keep - Ref: EXL-A20
- Leg 150mm - Ref: EXL-A150
- Coat Hook - Ref: EXCH-A20
- Brackets - Ref: EXB-A3/5

(Excludes Toilet Roll Holder)

### T LINE 12mm Compact Cubicle

#### Specifications

##### Pilasters and Headrail:

- Extruded Aluminium Pilaster and Headrail profiles - SAA as standard
- Hybrid & Nickel powder finishes available upon request

##### Doors & Divisions Panel Specification:

- 12mm compact solid grade laminate
- Black core radius & polished edge finish

##### Standard Dimensions:

- 2090mm overall height (including 150mm ground clearance) x 1500mm - 2000mm deep

##### Ironmongery:

- Rise & fall aluminium hinges - Ref: EXH-A13
- Recessed Indicator & Keep - Ref: EXL-A13
- Leg 150mm - Ref: EXL-A150
- Coat Hook - Ref: EXCH-A13
- Brackets - Ref: EXB-A3/7 and EXB-A3/8

(Excludes Toilet Roll Holder)

### Ironmongery

1. Aluminium Indicator Faceplate
2. Aluminium Indicator Slide Bolt
3. Aluminium Leg
4. Headrail Junction Detail



1.



2.



3.



4.

**Ironmongery Finish:** Satin anodised aluminium as standard (powder coated available upon request).

Full Height option available upon request (up to 2700mm).

**Colour Selections:** Excelsior Cubicle & Washroom Colour Selection

**Special Notes:** Outward opening doors complete with back to back St/Steel 'D' Handles and full length 'Z' Section door Stop/Keep. We recommend that outward opening doors open onto an adjacent solid wall to prevent overstrain on hinges.

We recommend that outward opening doors open onto an adjacent solid wall to prevent overstrain on hinges.