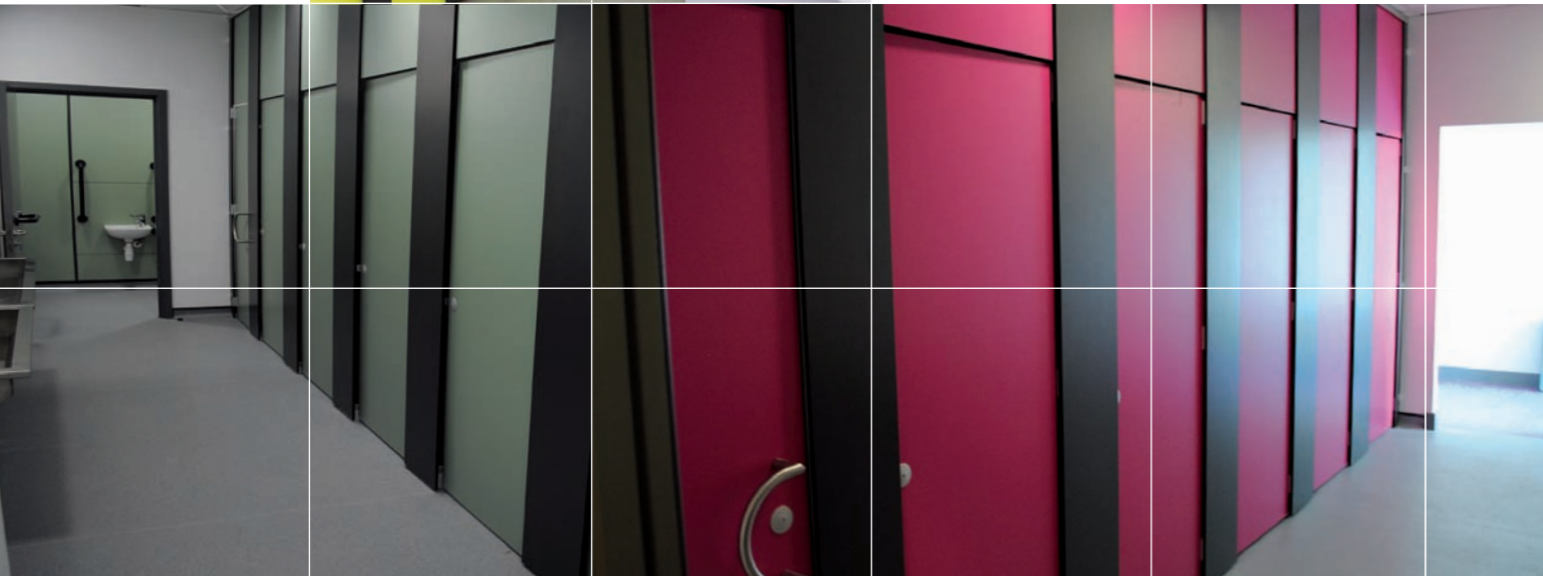


Skyline Cubicle Range

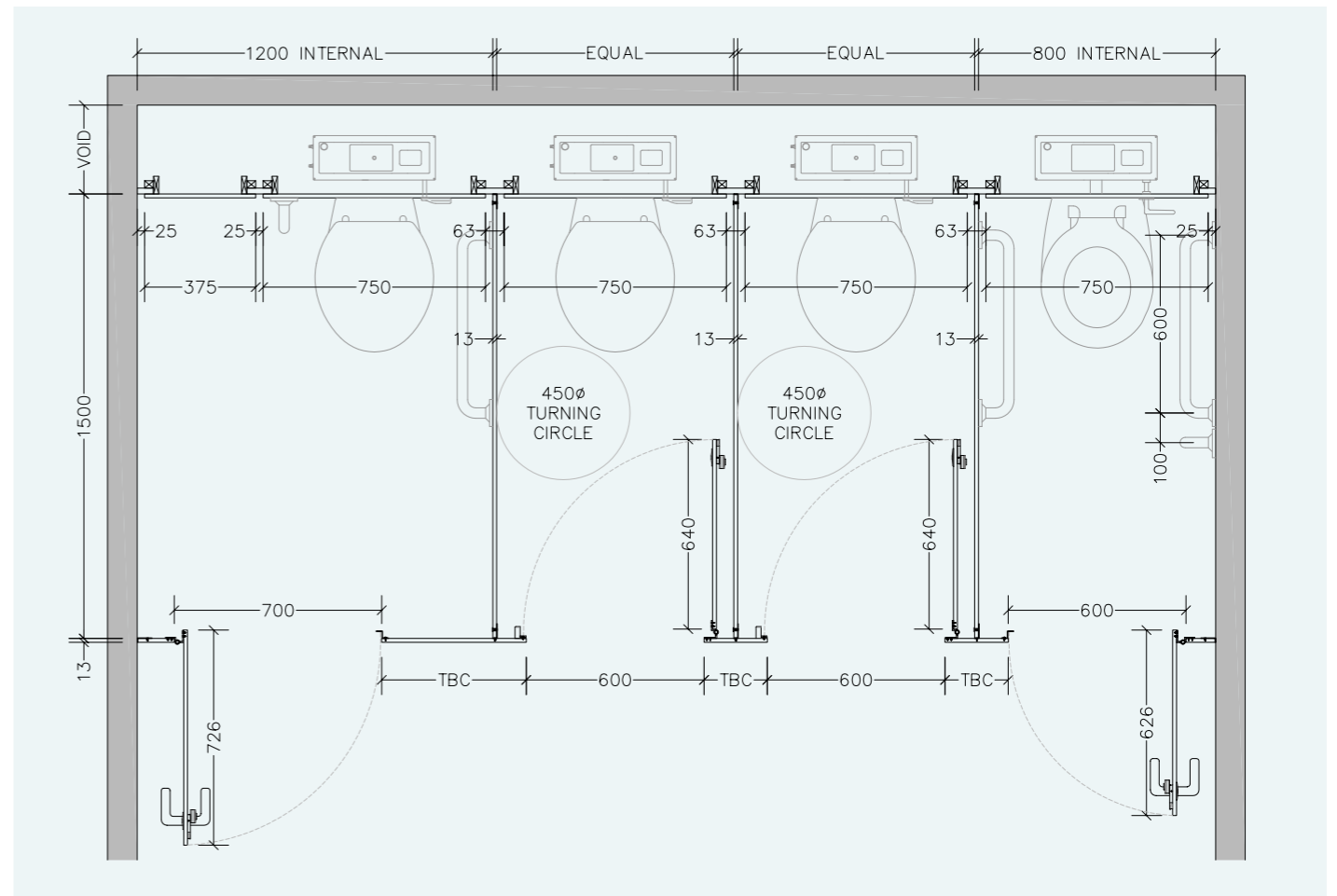
WASHROOMS FOR ALL ENVIRONMENTS



from **creation to installation...**
you can rest assured

excelsior[®]
washrooms for all environments

Typical Layout



Disability Discrimination Act (DDA) BS.8300

The building regulations make provisions for visual contrast between:

- Ironmongery and door faces.
- Some door faces and door edges
- where doors are not self closing or are held open.
- Door faces and pilasters.
- Handrails and walls.
- Floors and walls.

Contrast visually is given as a difference in light reflectance value (LRV) between two surfaces of greater than 30 points. Excelsior offer a range of both Laminate and Ironmongery colour finishes to comply with these guidelines.

The act also gives guidelines for the minimum requirements for both size and the recommended hardware of Disabled and Ambulant cubicles.

excelsior[®]
washrooms for all environments

Excelsior Panelling Systems Ltd
Unit 2, Woodside Industrial Estate, Pedmore Road, Dudley, West Midlands, DY2 0RL

Tel: +44 (0)1384 267770 Fax: +44 (0)1384 482127
E-mail: enquiries@excelsiorps.co.uk Web: www.excelsior-cubicles.co.uk



The elegant, & discreet full height system.

Meeting the demands of modern education and mixed use environments, Skyline is a floor to ceiling system providing the user with maximum privacy and comfort. A full range of complimentary duct panels and vanity units are available on request.

from creation to installation... you can rest assured

Excelsior have undertaken the manufacture, supply and installation of bespoke washroom products in all washroom environments since 1978. We have a wide selection of safe, attractive and reliable systems to suit all applications, from nursery schools right through to leisure centres and hospitals.

All levels of durability are catered for to meet the end users commercial constraints, combining innovation with practicality.

Perfect for locations where greater user privacy is required. The Skyline system is an extension of general cubicle systems provided as a floor to ceiling application with an aluminium floor channel or an alternative pedestal leg option to create a standard floor clearance.

The Skyline Range is available in 3 different specification board options to meet both budget and durability requirements.

Hardware is available in a standard aluminium finish with bespoke colours and finishes available on request at an additional cost.

Panel and door colours can be selected from a large range of preferred laminate manufacturers.

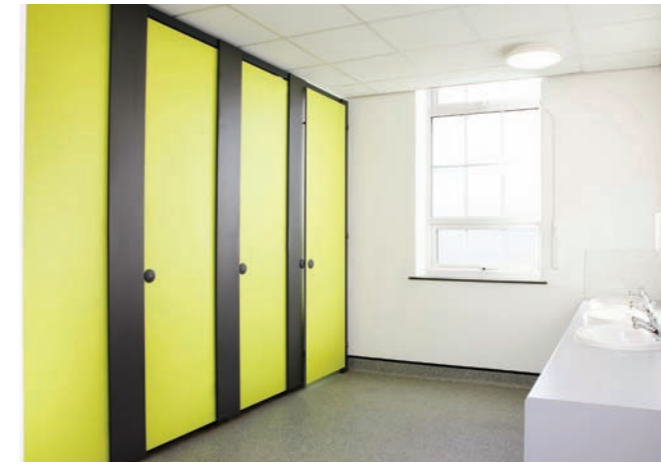
Wall & duct panelling and fully framed vanity units can be supplied to complement this system.

The Skyline cubicle range is available on a typical delivery basis of 2-3 weeks from receipt of approved drawings and confirmation of all colour finishes.

Installation by Excelsior is strongly recommended but not essential as a full set of fixing instructions and technical information is provided with the system.

Recommended Sectors:

- Education
- Commercial Offices
- Leisure



Skyline 12mm SGL Cubicles (Floor to ceiling)

Specifications

Doors, Divisions & Pilasters:

- 12mm Solid Compact Grade Laminate
- Black core radius & polished edge finish

Standard Dimensions:

- Up to 3000mm floor to ceiling height x 1500mm - 2000mm deep

Ironmongery:

- Rise and fall aluminium hinges Ref: EXH-A13
- Recessed Indicator and Keep Ref: EXL-A13
- Coat Hook - Ref: EXCH-A13
- Brackets - Ref: EXB-A3/7 & EXB-A3/8
- Headrail - Ref: P12/P15
- Division baserail 13mm SAA U-Channel

(Excludes Toilet Roll Holder)

Skyline 20mm HPL Cubicles (Floor to ceiling)

Specifications

Doors, Divisions & Pilasters:

- High Pressure Laminate PUR bonded onto 18mm MR core
- 2mm ABS edge finish

Standard Dimensions:

- Up to 3000mm floor to ceiling height x 1500mm - 2000mm deep

Ironmongery:

- Rise and fall aluminium hinges Ref: EXH-A20
- Recessed Indicator and Keep Ref: EXL-A20
- Coat Hook - Ref: EXCH-A20
- Brackets - Ref: EXB-A3/5
- Headrail - Ref: P12/P15
- Division baserail 20mm SAA U-Channel

(Excludes Toilet Roll Holder)

Skyline Summit CDF Cubicles (Floor to ceiling)

Specifications

Doors, Divisions and Pilasters

- 13mm Laminated Compact Density Fibreboard
- Black core radius & polished edge finish

Standard Dimensions:

- Up to 2800mm floor to ceiling height x 1500mm - 2000mm deep

Ironmongery:

- Rise and fall aluminium hinges Ref: EXH-A20
- Recessed Indicator and Keep Ref: EXL-A20
- Coat Hook - Ref: EXCH-A20
- Brackets - Ref: EXB-A3/5
- Headrail - Ref: P12/P15
- Division baserail 20mm SAA U-Channel

(Excludes Toilet Roll Holder)

Doors with over-panels supplied as standard detail (full length doors available upon request)

All Heights subject to material/colour selection

Ironmongery Finish: Aluminium as standard

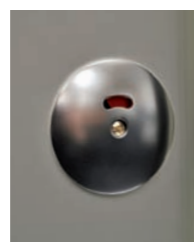
Colour Selections: Excelsior Cubicle & Washroom Colour Selections

Special Notes: Outward opening doors complete with back to back St/Steel 'D' Handles and full length 'Z' Section door Stop/Keep
Partitions may be supplied in 2 pieces to meet CDM/Manual Handling constraints
Partitions fitted into floor fixed U channel and finished 10mm below ceiling
Headrail detail fitted to top of pilaster internal face

We recommend that outward opening doors open onto an adjacent solid wall to prevent overstrain on hinges.

Ironmongery

1. Indicator Face Plate
2. Indicator & Keep
3. Pilaster Floor Junction
4. Inside Cubicle View



1.



2.



3.



4.