

# Senator Cubicle Range

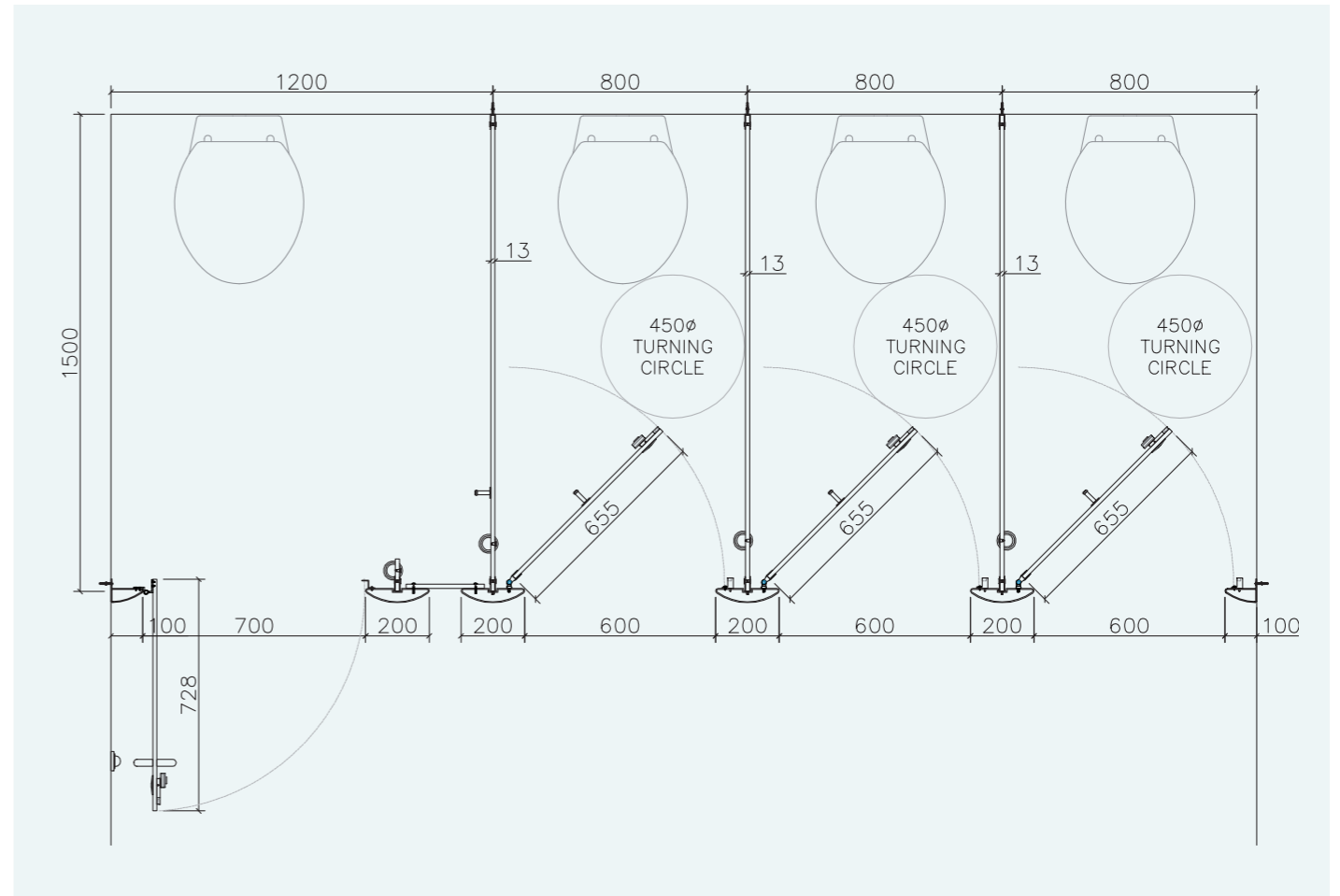
WASHROOMS FOR ALL ENVIRONMENTS



from **creation to installation...**  
you can rest assured

**excelsior**<sup>®</sup>  
washrooms for all environments

## Typical Layout



## Disability Discrimination Act (DDA) BS.8300

The building regulations make provisions for visual contrast between:

- Ironmongery and door faces.
- Some door faces and door edges  
- where doors are not self closing or are held open.
- Door faces and pilasters.
- Handrails and walls.
- Floors and walls.

Contrast visually is given as a difference in light reflectance value (LRV) between two surfaces of greater than 30 points. Excelsior offer a range of both Laminate and Ironmongery colour finishes to comply with these guidelines.

The act also gives guidelines for the minimum requirements for both size and the recommended hardware of Disabled and Ambulant cubicles.

**excelsior**<sup>®</sup>  
washrooms for all environments

Excelsior Panelling Systems Ltd  
Unit 2, Woodside Industrial Estate, Pedmore Road, Dudley, West Midlands, DY2 0RL

Tel: +44 (0)1384 267770 Fax: +44 (0)1384 482127  
E-mail: enquiries@excelsiorps.co.uk Web: www.excelsior-cubicles.co.uk



# An elegant, & prestigious framed system.

The Senator range is a perfect solution where the client requires a 'touch of class' and is equally at home in all environments ranging from prestigious office developments, schools, colleges and leisure facilities. Extruded aluminium profiles and colour co-ordinated panels, produce a most striking visual effect.

## from creation to installation... you can rest assured

Excelsior have undertaken the manufacture, supply and installation of bespoke washroom products in all washroom environments since 1978. We have a wide selection of safe, attractive and reliable systems to suit all applications, from nursery schools right through to leisure centres and hospitals.

All levels of durability are catered for to meet the end users commercial constraints, combining innovation with practicality.

SENATOR's design allows inward and outward opening cubicles to be placed side by side. This provides the ability to incorporate DDA cubicles without altering the external appearance. The SENATOR indicator bolt is also easily operated by people of all ages and abilities.

An optional security "anti-vandal" fixing kit is available for areas prone to vandalism. The profiles are available in a wide choice of colours and combined with a multitude of laminates, melamine's, solid laminates, textures and patterns, SENATOR remains the most versatile, adaptable system on the market.

Non-standard powder coated hardware finishes can be supplied which may incur additional cost. Wall & duct panelling and fully framed vanity units can be supplied to complement this system. The Senator range is available on a typical delivery period of 3-4 weeks from receipt of approved drawings and confirmation of all colour finishes.

Installation by Excelsior is strongly recommended but not essential as a full set of fixing instructions and technical information is provided with the system.

### Recommended Sectors:

- Commercial Offices
- Education
- Leisure
- Transport
- Healthcare



### Senator 12mm Compact Cubicles

#### Specifications

##### Pilasters & Headrail:

- Elliptically profiled Extruded Aluminium SAA as standard
- Hybrid & Nickel powder finishes available upon request

##### Doors & Divisions Panel Specification:

- 12mm Compact Solid Grade Laminate
- Black core radius & polished edge finish

##### Standard Dimensions:

- 2000mm overall height (including 150mm ground clearance) x 1500mm - 2000mm deep

##### Ironmongery:

- Rise & fall aluminium hinges Ref: EXH-A13
- Indicator & Keep - Ref: EXL-A13
- Leg 150mm - Ref: EXL-A150
- Coat Hook - Ref: EXCH-A13
- Brackets - Ref: SGL EXB-A3/7

(Excludes Toilet Roll Holder)

### Senator 20mm HPL Cubicles

#### Specifications

##### Pilasters & Headrail:

- Elliptically profiled Extruded Aluminium SAA as standard
- Hybrid & Nickel powder finishes available upon request

##### Doors & Divisions Panel Specification:

- HPL bonded onto 18mm MR core
- 2mm ABS edge finish

##### Standard Dimensions:

- 2000mm overall height (including 150mm ground clearance) x 1500mm - 2000mm deep

##### Ironmongery:

- Rise & fall aluminium hinges Ref: EXH-A20
- Indicator & Keep - Ref: EXL-A20
- Leg 150mm - Ref: EXL-A150
- Coat Hook - Ref: EXCH-A20
- Brackets - Ref: SGL EXB-A3/5

(Excludes Toilet Roll Holder)

### Senator 19mm MFC Cubicles

#### Specifications

##### Pilasters & Headrail:

- Elliptically profiled Extruded Aluminium SAA as standard
- Hybrid & Nickel powder finishes available upon request

##### Doors & Divisions Panel Specification:

- 19mm Melamine Faced Chipboard
- 2mm ABS edge finish

##### Standard Dimensions:

- 2000mm overall height (including 150mm ground clearance) x 1500mm - 2000mm deep

##### Ironmongery:

- Rise & fall aluminium hinges Ref: EXH-A20
- Indicator & Keep - Ref: EXL-A20
- Leg 150mm - Ref: EXL-A150
- Coat Hook - Ref: EXCH-A20
- Brackets - Ref: SGL EXB-A3/5

(Excludes Toilet Roll Holder)

## Ironmongery

1. Indicator Faceplate
2. Indicator Slide Bolt
3. Leg
4. U Bracket



1.



2.



3.



4.

**Ironmongery Finish:** Aluminium as standard (available with powder coated indicator faceplates if extrusions are powder coated)

**Colour Selections:** Excelsior Cubicle & Washroom Colour Selection

**Special Notes:** Outward opening doors complete with back to back St/Steel 'D' Handles and full length 'Z' Section door Stop/Keep

We recommend that outward opening doors open onto an adjacent solid wall to prevent overstrain on hinges.