

Select Cubicle Ranges

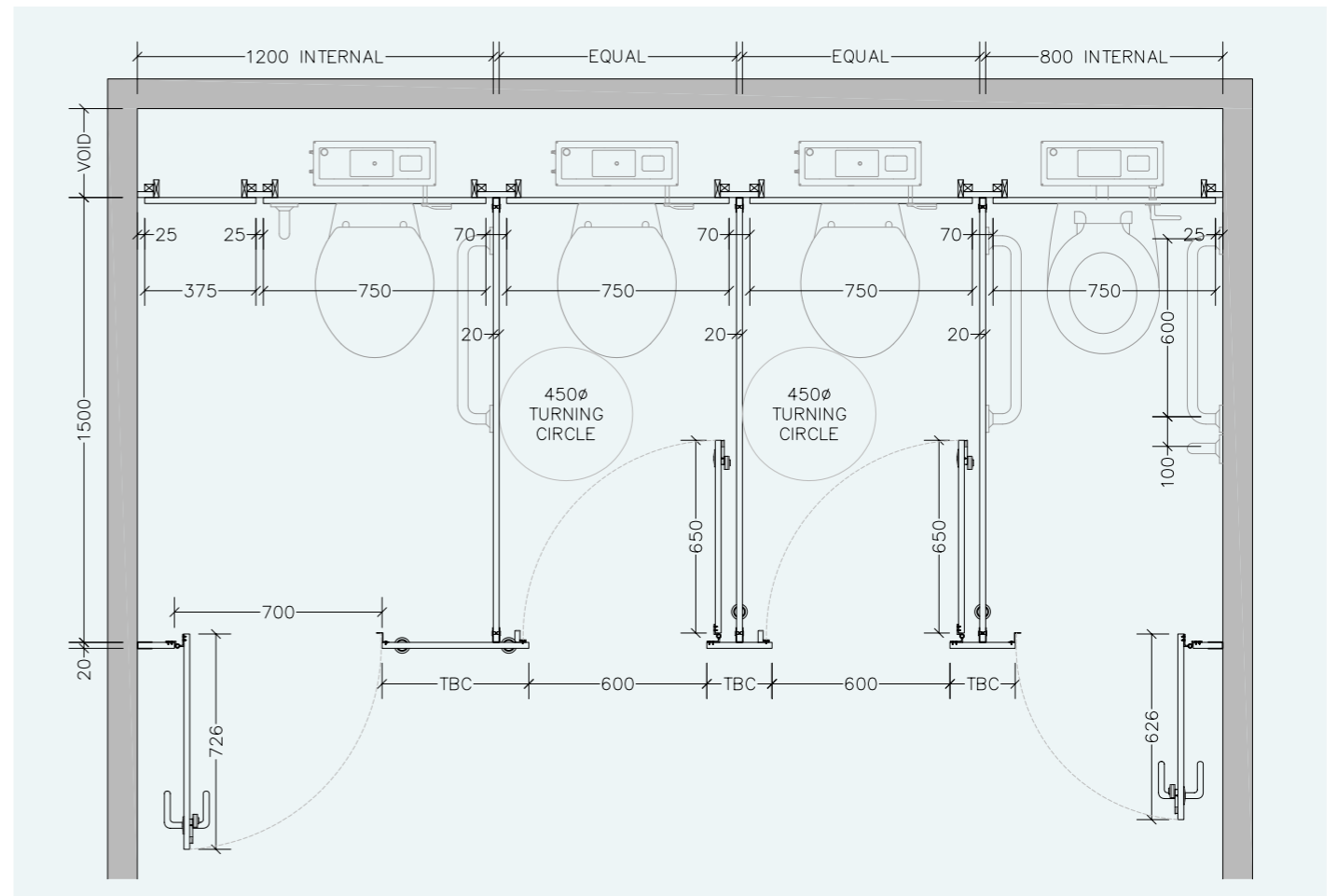
WASHROOMS FOR ALL ENVIRONMENTS



from **creation to installation...**
you can rest assured

excelsior[®]
washrooms for all environments

Typical Layout



Disability Discrimination Act (DDA) BS.8300

The building regulations make provisions for visual contrast between:

- Ironmongery and door faces.
- Some door faces and door edges
- where doors are not self closing or are held open.
- Door faces and pilasters.
- Handrails and walls.
- Floors and walls.

Contrast visually is given as a difference in light reflectance value (LRV) between two surfaces of greater than 30 points. Excelsior offer a range of both Laminate and Ironmongery colour finishes to comply with these guidelines.

The act also gives guidelines for the minimum requirements for both size and the recommended hardware of Disabled and Ambulant cubicles.

excelsior[®]
washrooms for all environments

Excelsior Panelling Systems Ltd
Unit 2, Woodside Industrial Estate, Pedmore Road, Dudley, West Midlands, DY2 0RL

Tel: +44 (0)1384 267770 Fax: +44 (0)1384 482127
E-mail: enquiries@excelsiorps.co.uk Web: www.excelsior-cubicles.co.uk



An efficient, practical & robust cubicle system.

The Select Range is a tried and tested cubicle system comprising of High Pressure Laminate faced components, incorporating Excelsior's own Aluminium range of Ironmongery as standard.

The range offers 2 pilaster options which include a 20mm square edged version and a 30mm postformed version.

from creation to installation... you can rest assured

Excelsior have undertaken the manufacture, supply and installation of bespoke washroom products in all washroom environments since 1978. We have a wide selection of safe, attractive and reliable systems to suit all applications, from nursery schools right through to leisure centres and hospitals.

All levels of durability are catered for to meet the end users commercial constraints, combining innovation with practicality.

Suitable for applications where superb appearance and medium use durability is required. Commercial office and educational environments can be greatly enhanced by the use of this attractive range.

Each panel element is edged with matching high impact 2mm ABS to enhance aesthetic appearance.

Cubicle ironmongery is provided in an aluminium finish as standard. Bespoke powder coated hardware can be supplied at an additional cost.

This range is not suitable for use in areas of high humidity (e.g. Showers).

Wall & duct panelling and fully framed vanity units can be supplied to complement this system.

The Select range is available on a short term delivery basis, typically 2-3 weeks from receipt of approved drawings.

Installation by Excelsior is strongly recommended but not essential as a full set of fixing instructions and technical information is provided with the system.

Recommended Sectors:

- Commercial Offices
- Education
- Leisure
- Transport
- Healthcare



Select Cubicle Range

Specifications

Doors, Divisions & Pilasters:

- High Pressure Laminate PUR bonded onto 18mm MR core
- 2mm ABS edge finish

Standard Dimensions:

- 1960mm overall height (including 150mm ground clearance) x 1500mm - 2000mm deep

All Heights Subject to Material/Colour Selection

Ironmongery:

- Rise and fall aluminium hinges - Ref: EXH-A20
- Recessed Indicator and Keep - Ref: EXL-A20
- Leg 150mm - Ref: EXL-A150
- Coat Hook - Ref: EXCH-A20
- Brackets - Ref: EXB-A3/5
- Headrail - Ref: EXPHR20
- Headrail End Caps - Ref: EXHREND

(Excludes Toilet Roll Holder)

Select Plus Cubicle Range

Specifications

Doors & Divisions:

- High Pressure Laminate PUR bonded onto 18mm MR core
- 2mm ABS edge finish

Pilasters:

- High Pressure Laminate bonded onto 28mm MR core
- Postformed Vertical Edges

Standard Dimensions:

- 1960mm overall height (including 150mm ground clearance) x 1500mm - 2000mm deep

All Heights Subject to Material/Colour Selection

Ironmongery:

- Rise and fall aluminium hinges - Ref: EXH-A20
- Recessed Indicator and Keep - Ref: EXL-A20
- Leg 150mm - Ref: EXL-A150
- Coat Hook - Ref: EXCH-A20
- Brackets - Ref: EXB-A3/5
- Headrail - Ref: EXPHR20
- Headrail End Caps - Ref: EXHREND

(Excludes Toilet Roll Holder)

Ironmongery

1. Indicator Faceplate
2. Indicator Slide Bolt
3. Leg
4. U Bracket



1.



2.



3.



4.

Ironmongery Finish: Aluminium as standard, powder coated (available at additional cost)

Full Height option available upon request (up to 3000mm)

Colour Selections: Excelsior Cubicle & Washroom Colour Selection

Special Notes: Outward opening doors complete with back to back St/Steel 'D' Handles and full length 'Z' Section door Stop/Keep
All Heights Subject to Material/Colour Selection

We recommend that outward opening doors open onto an adjacent solid wall to prevent overstrain on hinges.