

Planar Cubicle Range

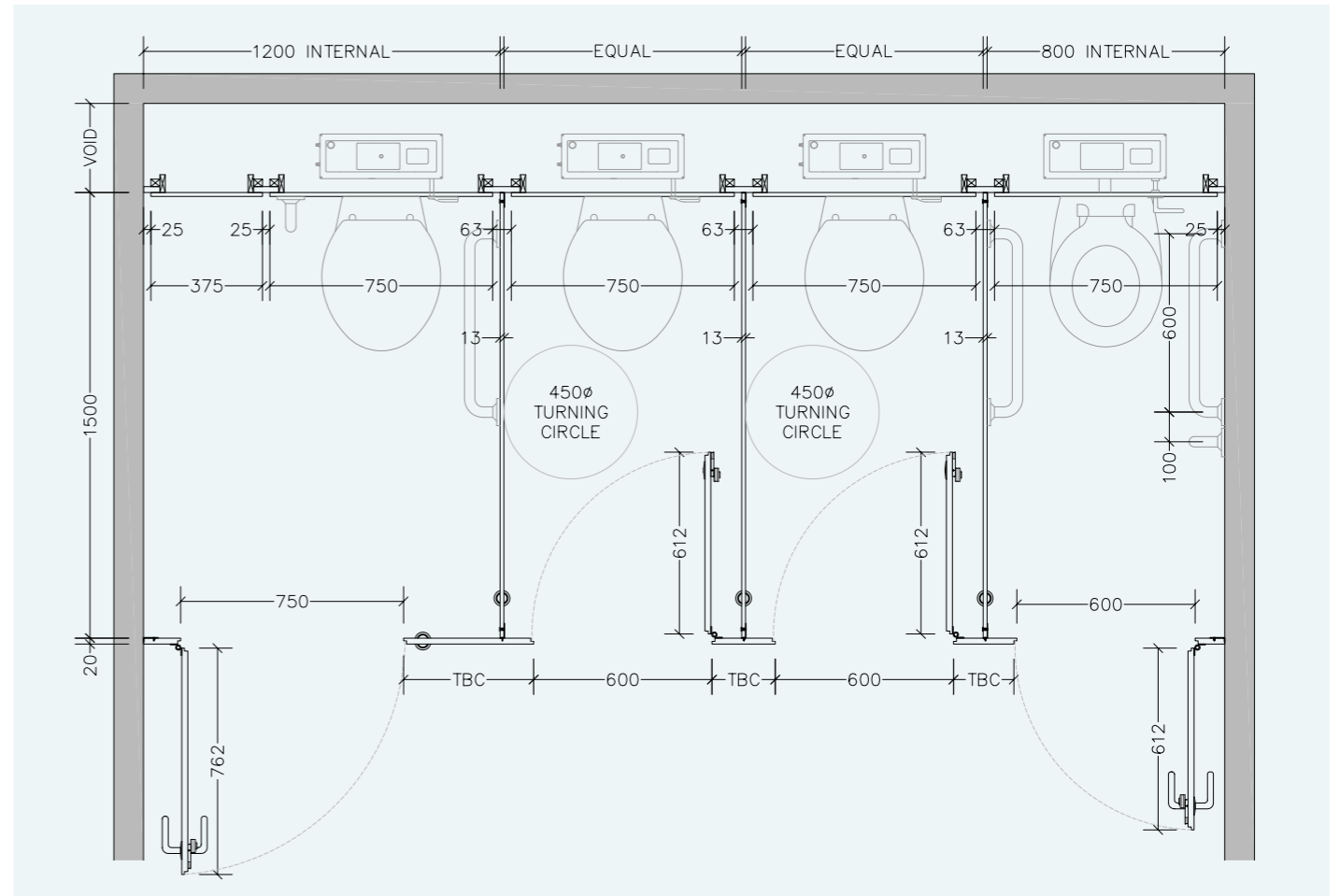
WASHROOMS FOR ALL ENVIRONMENTS



from **creation to installation...**
you can rest assured

excelsior[®]
washrooms for all environments

Typical Layout (Planar 20)



Disability Discrimination Act (DDA) BS.8300

The building regulations make provisions for visual contrast between:

- Ironmongery and door faces.
- Some door faces and door edges
- where doors are not self closing or are held open.
- Door faces and pilasters.
- Handrails and walls.
- Floors and walls.

Contrast visually is given as a difference in light reflectance value (LRV) between two surfaces of greater than 30 points. Excelsior offer a range of both Laminate and Ironmongery colour finishes to comply with these guidelines.

The act also gives guidelines for the minimum requirements for both size and the recommended hardware of Disabled and Ambulant cubicles.

excelsior[®]
washrooms for all environments

Excelsior Panelling Systems Ltd
Unit 2, Woodside Industrial Estate, Pedmore Road, Dudley, West Midlands, DY2 0RL

Tel: +44 (0)1384 267770 Fax: +44 (0)1384 482127
E-mail: enquiries@excelsiorps.co.uk Web: www.excelsior-cubicles.co.uk



Offering style and strength in harmony

The Planar range of cubicles allows us to offer a sophisticated, premium and sleek rebated flush fronted facade in either 20mm or 12mm compact grade laminate.

The use of attractive stainless steel ironmongery completes a system that is equally at home in a prestigious office development or a new school academy.

from creation to installation... you can rest assured

Excelsior have undertaken the manufacture, supply and installation of bespoke washroom products in all washroom environments since 1978. We have a wide selection of safe, attractive and reliable systems to suit all applications, from nursery schools right through to leisure centres and hospitals.

All levels of durability are catered for to meet the end users commercial constraints, combining innovation with practicality.

Suitable for both shower and WC cubicle environments.

With doors and pilasters available in either 20mm or 12mm thickness as standard and divisions in 12mm thickness the planar cubicle ranges offer both durability and style in abundance.

Utilising stainless steel ironmongery fixings and accessories as standard ensuring that the system stands up to the rigours of both wet and dry usage conditions.

Wall & duct panelling and fully framed vanity units can be supplied to complement this system.

The Planar range is available on a typical delivery period of 3-4 weeks from receipt of approved drawings.

The option of digital laminate designs are available subject to additional cost and lead times.

Installation by Excelsior is strongly recommended but not essential as a full set of fixing instructions and technical information is provided with the system.

Recommended Sectors:

- Commercial Offices
- Education
- Leisure



Planar 20 Cubicles

Specifications

Doors and Pilasters:

- 20mm Laminate Faced Compact Density Fibreboard(CDF)
- Rebated Machined Black Core Edges Divisions:

Divisions:

- 12mm Compact Grade Laminate
- Square Machined Black Core Edges

Standard Dimensions:

- 1960mm overall height (c/w 150mm leg) x 1500mm deep (Floor to ceiling options available upon request).

All Heights Subject to Material/Colour Selection

Ironmongery:

- Self Closing Butt Hinges - Ref: T120 / T121 SSS
- Indicator and Keep - Ref: T201 (20mm) L/R (to suit handing) and T270 Keep
- U section Headrail
- Coat Hook - Ref: T501
- Wall Pilaster Brackets - Ref: T401 L Bracket
- Division/ Pilaster Brackets - Ref:T 410 U Bracket
- Leg - Ref: T351SM 150mm dome foot support

(Excludes Toilet Roll Holder)

Planar 12 Cubicles

Specifications

Doors and Pilasters:

- 12mm Compact Grade Laminate
- Rebated Machined Black Core Edges

Divisions:

- 12mm Compact Grade Laminate
- Square Machined Black Core Edges

Standard Dimensions:

- 1960mm overall height (c/w 150mm leg) x 1500mm deep (Floor to ceiling options available upon request).

All Heights Subject to Material/Colour Selection

Ironmongery:

- Self Closing Butt Hinges - Ref: T120 / T121 SSS
- Indicator and Keep - Ref: T201 (12mm) L/R (to suit handing) and T270 Keep
- U section Headrail
- Coat Hook - Ref: T501
- Wall Pilaster Brackets - Ref: T400 L Bracket
- Division/ Pilaster Brackets - Ref:T 410 U Bracket
- Leg - Ref: T351SM 150mm dome foot support

(Excludes Toilet Roll Holder)

Ironmongery

1. Hinge
2. Indicator Slide Bolt
3. Leg
4. Indicator Faceplate



Ironmongery Finish: Satin Stainless Steel as standard

Colour Selections: Excelsior Preferred Cubicle & Washroom Colour Selections

Special Notes: Outward opening doors complete with back to back Stainless Steel 'D' Handles.

Customer to ensure perimeter walls are plumb level at pilaster and partition junctions.

We recommend that outward opening doors open onto an adjacent solid wall to prevent overstrain on hinges.