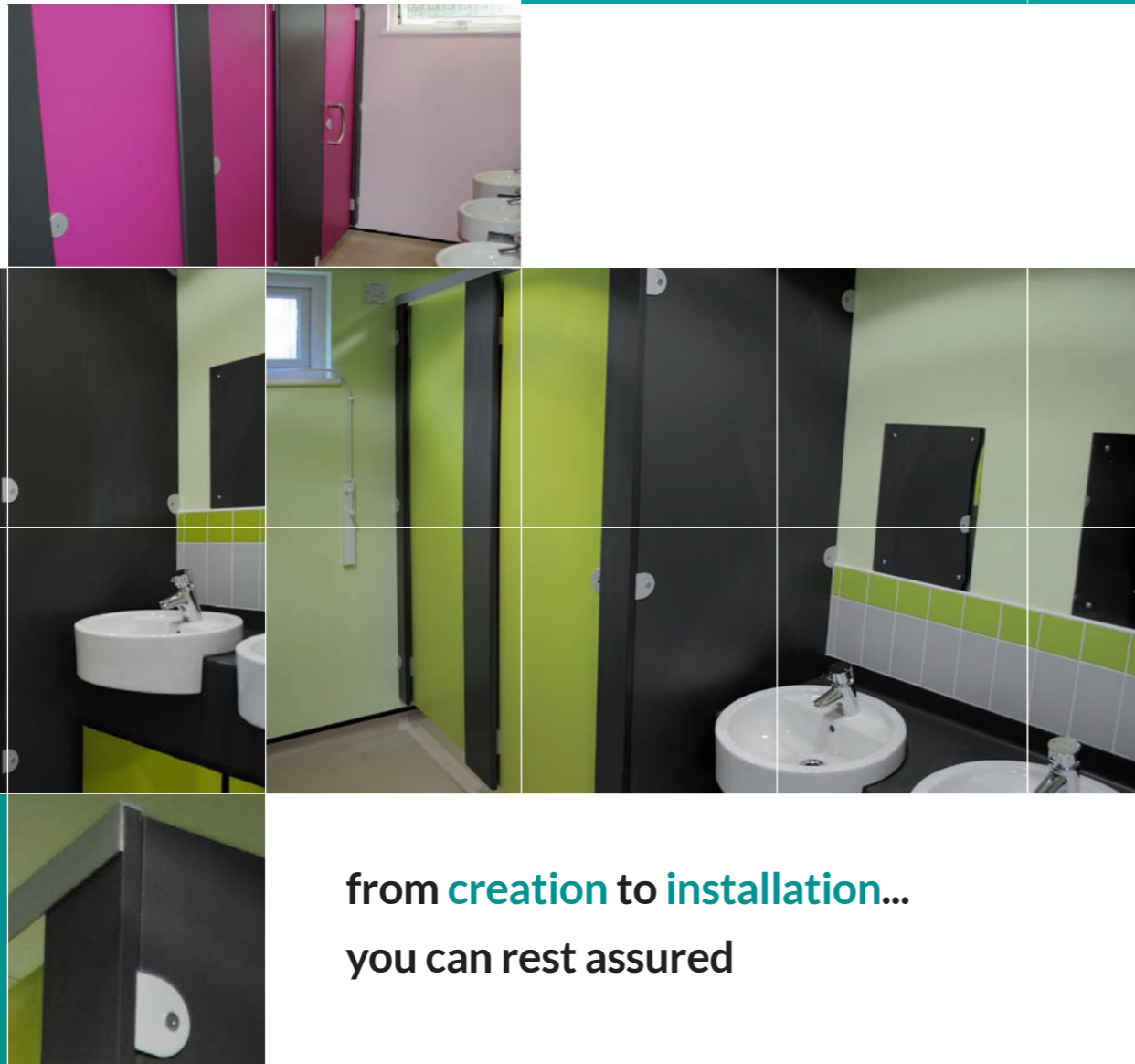


Option Cubicle Range

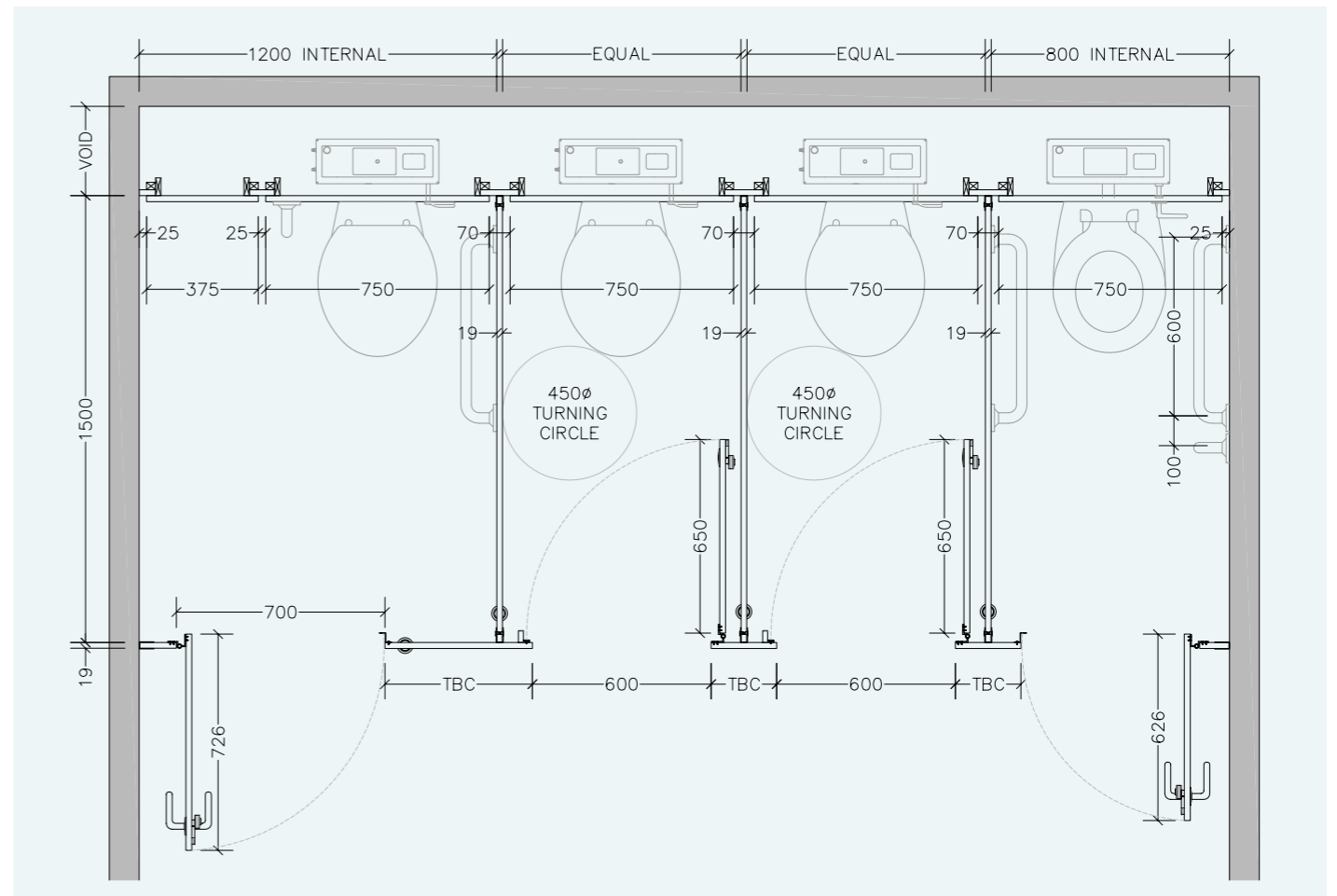
WASHROOMS FOR ALL ENVIRONMENTS



from **creation to installation...**
you can rest assured

excelsior[®]
washrooms for all environments

Typical Layout



Disability Discrimination Act (DDA) BS.8300

The building regulations make provisions for visual contrast between:

- Ironmongery and door faces.
- Some door faces and door edges
- where doors are not self closing or are held open.
- Door faces and pilasters.
- Handrails and walls.
- Floors and walls.

Contrast visually is given as a difference in light reflectance value (LRV) between two surfaces of greater than 30 points. Excelsior offer a range of both Laminate and Ironmongery colour finishes to comply with these guidelines.

The act also gives guidelines for the minimum requirements for both size and the recommended hardware of Disabled and Ambulant cubicles.

excelsior[®]
washrooms for all environments

Excelsior Panelling Systems Ltd
Unit 2, Woodside Industrial Estate, Pedmore Road, Dudley, West Midlands, DY2 0RL

Tel: +44 (0)1384 267770 Fax: +44 (0)1384 482127
E-mail: enquiries@excelsiorps.co.uk Web: www.excelsior-cubicles.co.uk



The clean, economic & versatile cubicle system.

The Option range is Excelsior's most cost effective and long standing cubicle system, utilising 19mm Melamine Faced Chipboard and offering a price economy to suit all budgets yet still maintaining a strong visual presence.

The Option Plus range allows us to offer a 20mm postformed HPL pilaster frontage with 19mm melamine faced chipboard doors and partitions.

from creation to installation... you can rest assured

Excelsior have undertaken the manufacture, supply and installation of bespoke washroom products in all washroom environments since 1978. We have a wide selection of safe, attractive and reliable systems to suit all applications, from nursery schools right through to leisure centres and hospitals.

All levels of durability are catered for to meet the end users commercial constraints, combining innovation with practicality.

Suitable for light to medium use environments and available in a range of plain, pattern and woodgrain melamine faced chipboard colour finishes offered by Sonae.

Each panel element is edged with matching high impact 2mm softform ABS to enhance aesthetic appearance, with the Option Plus range offering an upgrade to HPL postformed pilasters.

Cubicle fixings and accessories are provided in a durable satin anodised aluminium.

Powder coated hardware finishes can be supplied at an additional cost.

Wall & duct panelling and fully framed vanity units can be supplied to complement this system.

The Option range is available on a short term delivery basis, typically 2-3 weeks from receipt of approved drawings.

Installation by Excelsior is strongly recommended but not essential as a full set of fixing instructions and technical information is provided with the system.

Suitable for dry areas only.

Recommended Sectors:

- Commercial Offices
- Education
- Leisure
- Transport
- Healthcare



Option Cubicles

Specifications

Doors, Divisions & Pilasters Panel Specification:

- 19mm Melamine Faced Chipboard
- Matching or contrasting 2mm ABS edge finish

Standard Dimensions:

- 2050mm overall height (including 150mm ground clearance) x 1500mm - 2000mm deep

SAA Ironmongery:

- Rise and fall aluminium hinges - Ref: EXCH20
- Indicator and Keep - Ref: BH1-1
- Leg 150mm - Ref: EXLEG/11
- Coat Hook - Ref: EXCOAT20
- Brackets - Ref: EXB3/5
- Headrail - Ref: 20mm 'L' Section

(Excludes Toilet Roll Holder)

Option Plus Cubicles

Specifications

Doors & Divisions Panel Specification:

- 19mm Melamine Faced Chipboard
- Matching or contrasting 2mm ABS edge finish

Pilaster Panel Specification:

- 20mm HPL Faced Chipboard
- Post formed vertical edges

Standard Dimensions:

- 2050mm overall height (including 150mm ground clearance) x 1500mm - 2000mm deep

SAA Ironmongery:

- Rise and fall aluminium hinges - Ref: EXCH20
- Indicator and Keep - Ref: BH1-1
- Leg 150mm - Ref: EXLEG/11
- Coat Hook - Ref: EXCOAT20
- Brackets - Ref: EXB3/5
- Headrail - Ref: 20mm 'L' Section

(Excludes Toilet Roll Holder)

Ironmongery

1. SAA Option Headrail
2. SAA Option Indicator Faceplate
3. SAA Option U Bracket
4. SAA Option Leg



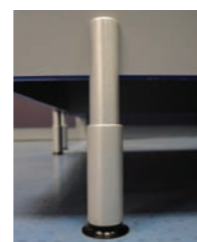
1.



2.



3.



4.

Ironmongery Finish: Satin anodised aluminium as standard, powder coated (available at additional cost)

Colour Selections: Excelsior Sonae MFC Cubicle & Washroom Colour Selection

Special Notes: Outward opening doors complete with back to back St/Steel 'D' Handles and full length 'Z' Section door Stop/Keep

We recommend that outward opening doors open onto an adjacent solid wall to prevent overstrain on hinges.