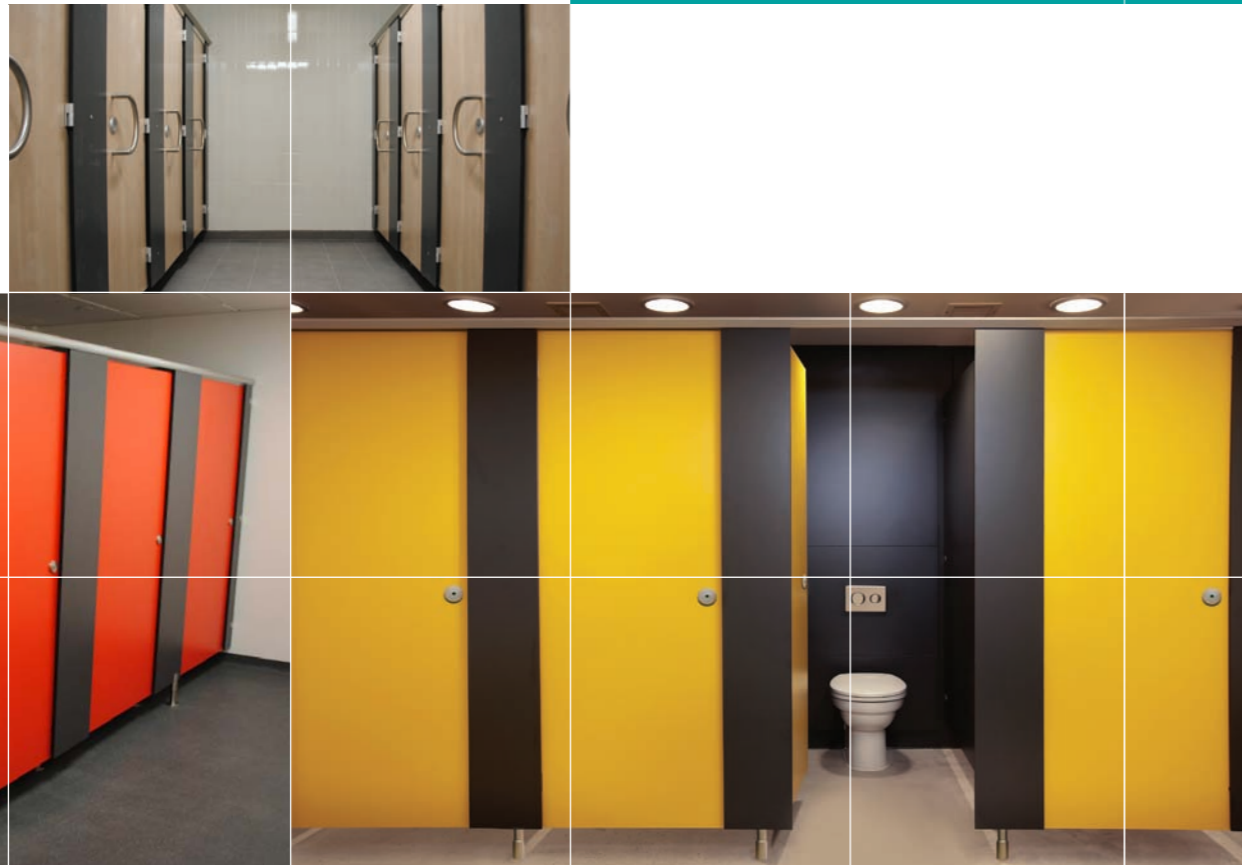


# Mariner Cubicle Range

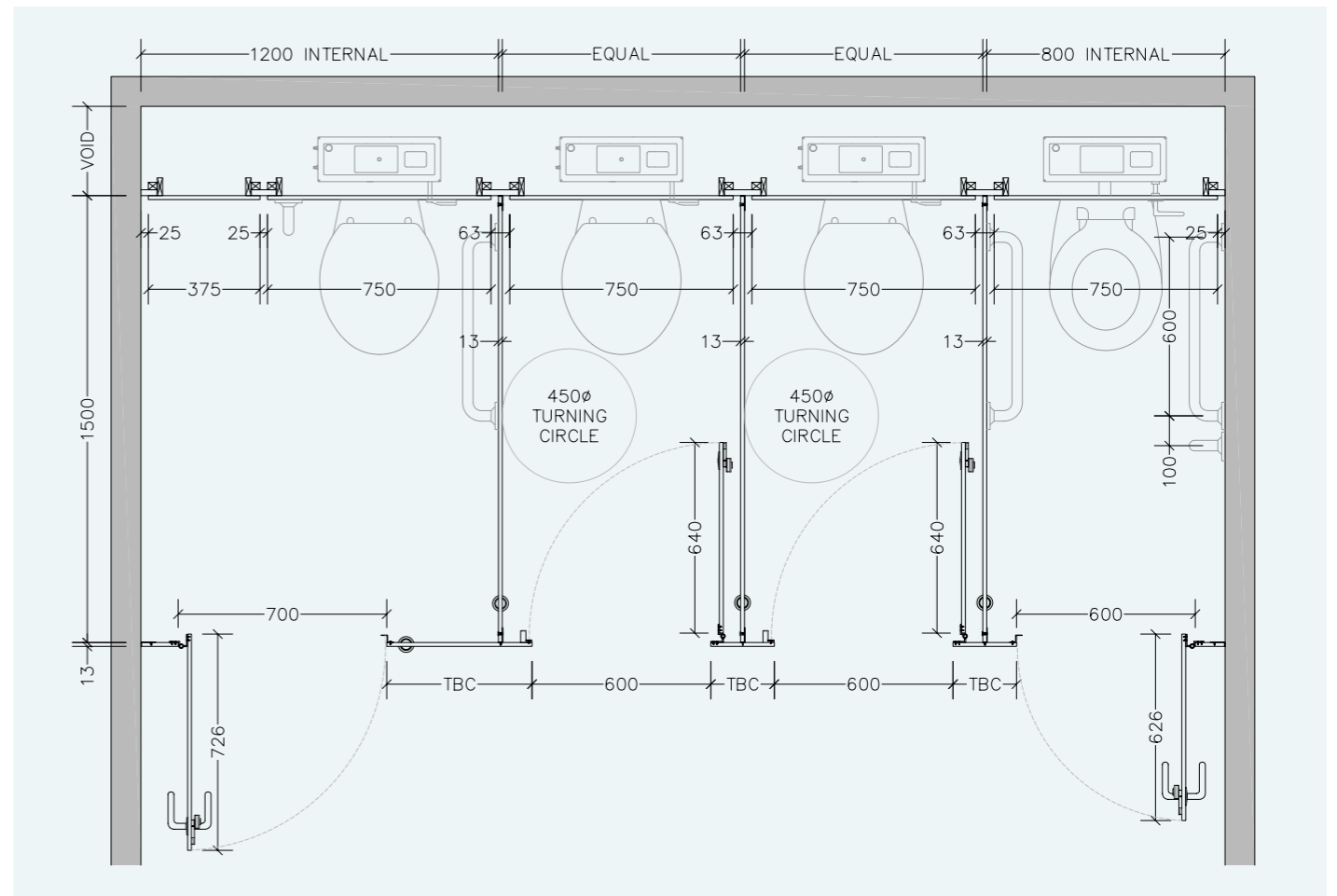
WASHROOMS FOR ALL ENVIRONMENTS



from **creation to installation...**  
you can rest assured

**excelsior**<sup>®</sup>  
washrooms for all environments

## Typical Layout



## Disability Discrimination Act (DDA) BS.8300

The building regulations make provisions for visual contrast between:

- Ironmongery and door faces.
- Some door faces and door edges  
- where doors are not self closing or are held open.
- Door faces and pilasters.
- Handrails and walls.
- Floors and walls.

Contrast visually is given as a difference in light reflectance value (LRV) between two surfaces of greater than 30 points. Excelsior offer a range of both Laminate and Ironmongery colour finishes to comply with these guidelines.

The act also gives guidelines for the minimum requirements for both size and the recommended hardware of Disabled and Ambulant cubicles.

**excelsior**<sup>®</sup>  
washrooms for all environments

Excelsior Panelling Systems Ltd  
Unit 2, Woodside Industrial Estate, Pedmore Road, Dudley, West Midlands, DY2 0RL

Tel: +44 (0)1384 267770 Fax: +44 (0)1384 482127  
E-mail: enquiries@excelsiorps.co.uk Web: www.excelsior-cubicles.co.uk



# Hard wearing resistant & durable cubicle system.

The Mariner Range is ideal for harsh environments utilising vandal & water resistant Compact Solid Grade Laminate. Multiple hardware options offer greater design flexibility. The Mariner range offers an extended life cycle under normal usage conditions.

## from creation to installation... you can rest assured

Excelsior have undertaken the manufacture, supply and installation of bespoke washroom products in all washroom environments since 1978. We have a wide selection of safe, attractive and reliable systems to suit all applications, from nursery schools right through to leisure centres and hospitals.

All levels of durability are catered for to meet the end users commercial constraints, combining innovation with practicality.

A heavy duty vandal and water resistant system utilising compact solid grade laminate and is suited to applications where the panelling is at risk from harsh environmental factors or abuse by users.

Vandal resistant fittings are provided in aluminium or stainless steel as standard to compliment the smooth radius black core edges.

This range is suitable for use in humid areas (i.e. Showers, swimming baths or leisure centres) and harsh environments such as industrial and public areas vulnerable to vandalism.

Bespoke powder coated hardware finishes available at an additional cost.

Wall & duct panelling and fully framed vanity units can be supplied to complement this system.

The Mariner range is available on a typical delivery period of 2-3 weeks from receipt of approved drawings and confirmation of all colour finishes.

Installation by Excelsior is strongly recommended but not essential as a full set of fixing instructions and technical information is provided with the system.

### Recommended Sectors:

- Education
- Leisure
- Transport
- Healthcare



## Mariner 12mm Compact Cubicles (Aluminium Ironmongery)

### Specifications

#### Doors, Divisions & Pilasters Panel Specification:

- 12mm Compact Solid Grade Laminate
- Black core radius & polished edge finish

#### Standard Dimensions:

**Standard:** 1960mm overall height (c/w 150mm leg) x 1500mm deep

**Option B:** 2050mm overall height (c/w 150mm leg) x 1500mm - 2000mm deep

*All Heights Subject to Material/Colour Selection*

#### Aluminium Ironmongery:

- Rise and fall hinges - Ref: EXH-A13
- Recessed Indicator and Keep - Ref: EXL-A13
- Leg 150mm - Ref: EXL-A150
- Coat Hook - Ref: EXCH-A13
- Brackets - Ref: EXB-A3/7 and EXB-A3/8
- Headrail - Ref: EXPHR13
- Headrail End Caps - Ref: EXHREND

*(Excludes Toilet Roll Holder)*

## Mariner 12mm Compact Cubicles (Stainless Steel Ironmongery)

### Specifications

#### Doors, Divisions & Pilasters Panel Specification:

- 12mm Compact Solid Grade Laminate
- Black core radius & polished edge finish

#### Standard Dimensions:

**Standard:** 1960mm overall height (c/w 150mm leg) x 1500mm deep

**Option B:** 2050mm overall height (c/w 150mm leg) x 1500mm - 2000mm deep

*All Heights Subject to Material/Colour Selection*

#### Stainless Steel Ironmongery:

- Rise & fall hinges - Ref: T100 L or T100 R (to suit handing)
- Indicator and Keep - Ref: T201L or T201R / keep T250/buffer T950
- Leg 150mm - Ref: T300
- Coat Hook - Ref: T520
- Brackets - Ref: T410
- Headrail - Ref: EXPHR13
- Headrail End Caps - Ref: EXHREND

*(Excludes Toilet Roll Holder)*

## Ironmongery

1. Aluminium Indicator Faceplate
2. Aluminium Indicator Slide Bolt
3. Aluminium Leg
4. Aluminium U Bracket



1.



2.



3.



4.

**Ironmongery Finish:** As specification options above

**Colour Selections:** Excelsior Polyrey Cubicle & Washroom Colour Selection

**Special Notes:** Outward opening doors complete with back to back St/Steel 'D' Handles and full length 'Z' Section door Stop/Keep

**All Heights Subject to Material/Colour Selection**

**Woodgrain Doors Max. 1960mm overall height (incl. 150mm grd. Clearance)**

**We recommend that outward opening doors open onto an adjacent solid wall to prevent overstrain on hinges.**