

Hydroline Cubicle Range

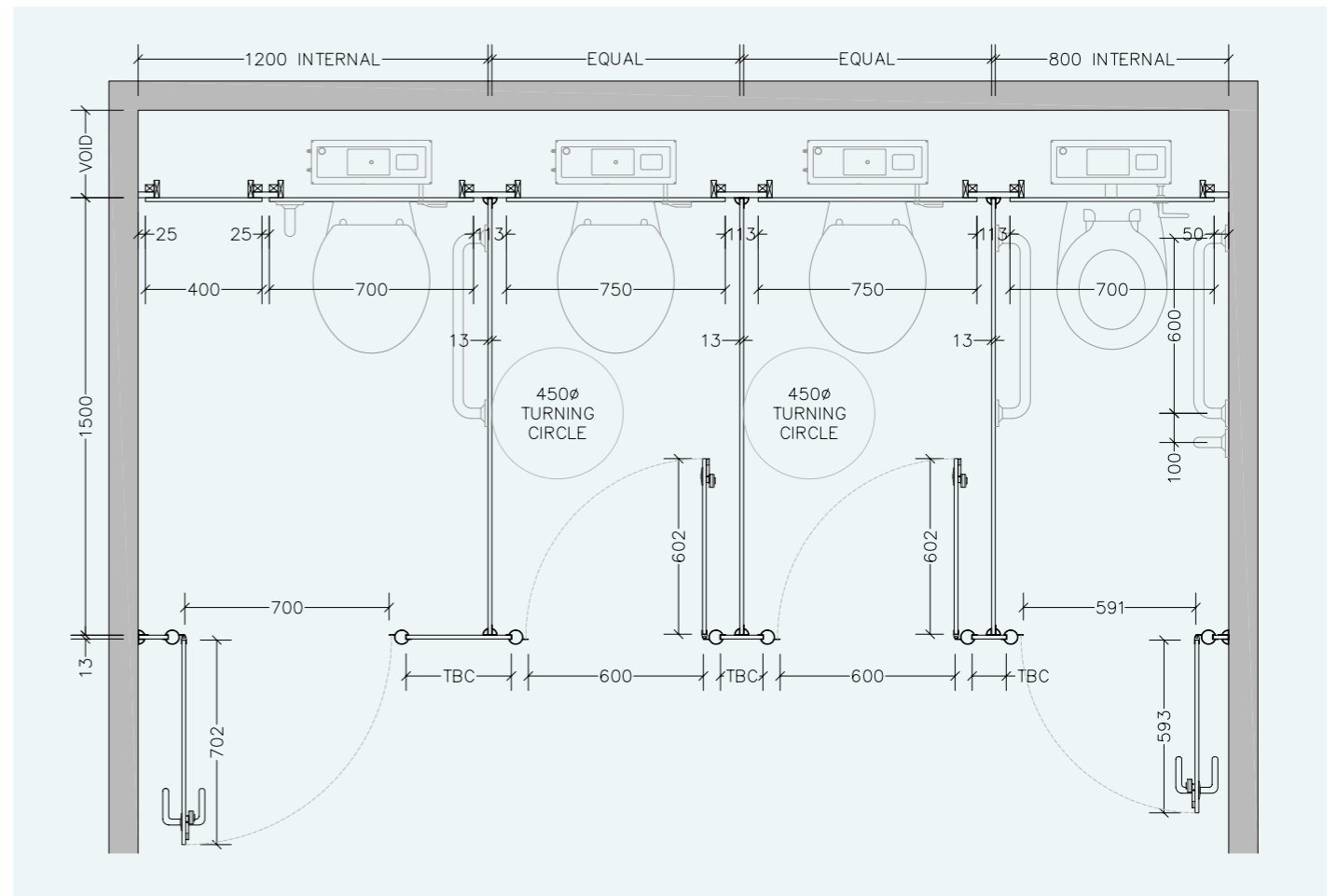
WASHROOMS FOR ALL ENVIRONMENTS



from **creation to installation...**
you can rest assured

excelsior[®]
washrooms for all environments

Typical Layout



Disability Discrimination Act (DDA) BS.8300

The building regulations make provisions for visual contrast between:

- Ironmongery and door faces.
- Some door faces and door edges
- where doors are not self closing or are held open.
- Door faces and pilasters.
- Handrails and walls.
- Floors and walls.

Contrast visually is given as a difference in light reflectance value (LRV) between two surfaces of greater than 30 points. Excelsior offer a range of both Laminate and Ironmongery colour finishes to comply with these guidelines.

The act also gives guidelines for the minimum requirements for both size and the recommended hardware of Disabled and Ambulant cubicles.

excelsior[®]
washrooms for all environments

Excelsior Panelling Systems Ltd
Unit 2, Woodside Industrial Estate, Pedmore Road, Dudley, West Midlands, DY2 0RL

Tel: +44 (0)1384 267770 Fax: +44 (0)1384 482127
E-mail: enquiries@excelsiorps.co.uk Web: www.excelsior-cubicles.co.uk



A robust high performance self supported system.

The only choice for the serious leisure operator, cost effective, low maintenance, long life span (in excess of ten years) and above all good looks.

from creation to installation... you can rest assured

Excelsior have undertaken the manufacture, supply and installation of bespoke washroom products in all washroom environments since 1978. We have a wide selection of safe, attractive and reliable systems to suit all applications, from nursery schools right through to leisure centres and hospitals.

All levels of durability are catered for to meet the end users commercial constraints, combining innovation with practicality.

The Hydroline fully framed cubicle system has been specially designed for use in demanding municipal changing areas, washrooms and public toilets. Combining clean lines with extreme strength, the cubicles are very effective against the daily wear and tear associated with high use areas.

Hydroline has been engineered from the highest quality aluminium extrusions and is designed to be used in conjunction with 12mm Compact Grade Laminate panels. The stylish design, combined with strong framework and panels, makes the system extremely robust and ideal for all wet or dry public environments.

Hydroline is available in a variety of durable powder coated colours, which ensures the system is suitable for a variety of projects. The system also offers a unique anti-finger trap door design, which is essential for areas where children of all ages are left to enjoy themselves. The cubicles also feature vandal resistant doorframes, with anti-lift off, heavy duty hinges that will withstand the most punishing environments.

Recommended Sectors:

- Commercial Offices
- Education
- Leisure
- Transport
- Healthcare



Hydroline Tubular Framed 12mm SGL Cubicles

Specifications

Doors, Divisions, Pilaster & Infills:

- 12mm compact solid grade laminate
- Black core radius & polished edge finish

Standard Dimensions:

- 1980mm overall height (c/w 150mm leg) x 1500mm
- Increased height radius profiled divisions (upto 2600mm high) available at additional cost

Framework Detail:

- Hydroline is a fully framed tubular system manufactured from non-corrosive materials suitable for wet and dry areas

Framework Colour Options:

- RAL 9016 White; RAL 9001 Pearl White; RAL 9011 Black; RAL BS; 00A05 Steel Silver

Ironmongery:

- Rise and fall extruded channel continuous hinge
- Snib Turn Indicator and Keep
- Pilaster extrusion incorporating 150mm Leg
- Coat Hook
- Continuous wall channel Brackets
- Headrail
- Headrail End Caps

(Excludes Toilet Roll Holder)

Note: Wall & duct panelling and fully framed vanity units can be supplied to complement this system

Ironmongery Finish: RAL 9016 White; RAL 9001 Pearl White; RAL 9011 Black; RAL BS; 00A05 Steel Silver

Colour Selections: Excelsior Cubicle & Washroom Colour Selection

Special Notes: Outward opening doors complete with back to back St/Steel 'D' Handles.
Increased height radius profiled divisions (upto 2600mm high) available at an additional cost
Anti-peep rails to tops of cubicles available at an additional cost

We recommend that outward opening doors open onto an adjacent solid wall to prevent overstrain on hinges.

1. Leg & Hinge Details



2. Indicator Faceplate



3. Headrail Endcap



4. D Handle

