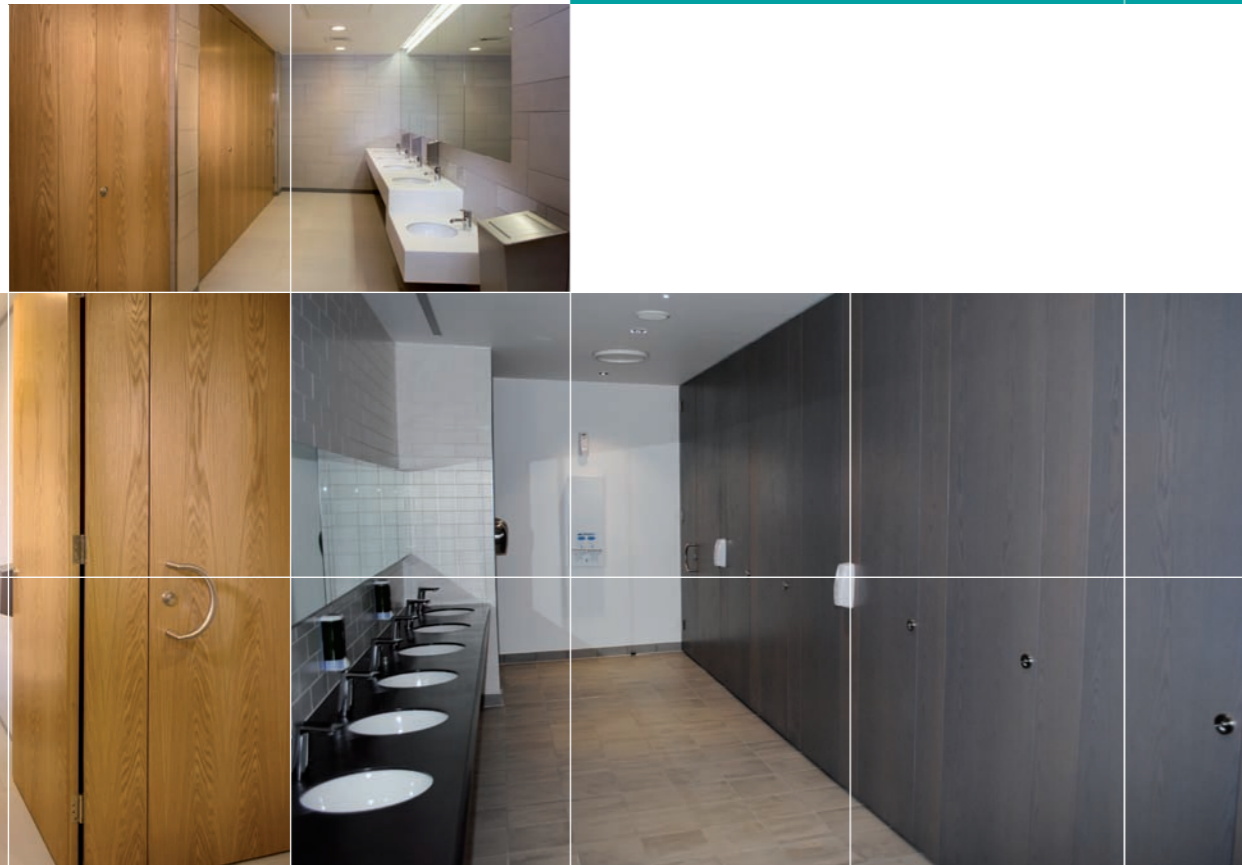


Flush 44 Cubicle Range

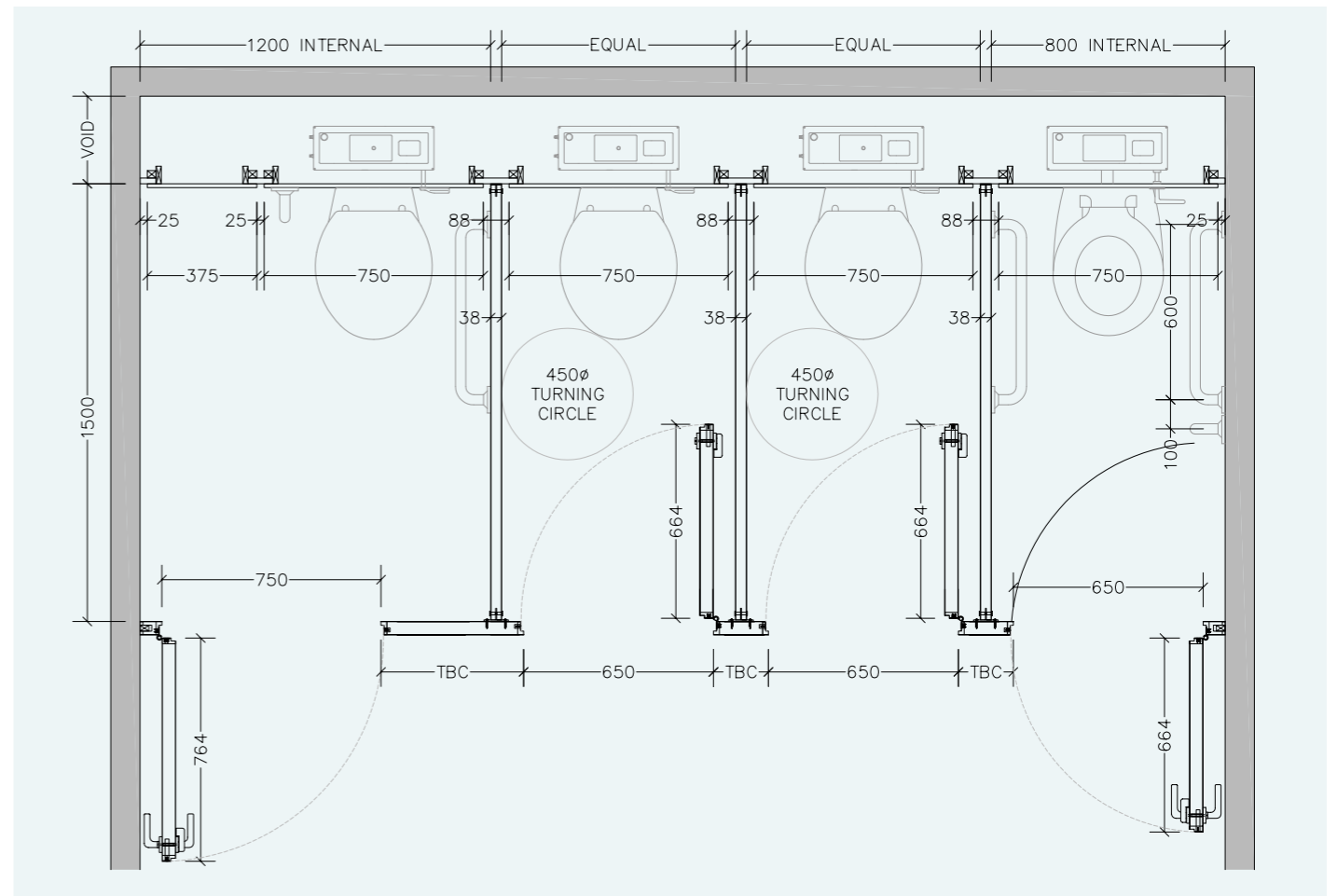
WASHROOMS FOR ALL ENVIRONMENTS



from **creation to installation...**
you can rest assured

excelsior[®]
washrooms for all environments

Typical Layout



Disability Discrimination Act (DDA) BS.8300

The building regulations make provisions for visual contrast between:

- Ironmongery and door faces.
- Some door faces and door edges
- where doors are not self closing or are held open.
- Door faces and pilasters.
- Handrails and walls.
- Floors and walls.

Contrast visually is given as a difference in light reflectance value (LRV) between two surfaces of greater than 30 points. Excelsior offer a range of both Laminate and Ironmongery colour finishes to comply with these guidelines.

The act also gives guidelines for the minimum requirements for both size and the recommended hardware of Disabled and Ambulant cubicles.

excelsior[®]
washrooms for all environments

Excelsior Panelling Systems Ltd
Unit 2, Woodside Industrial Estate, Pedmore Road, Dudley, West Midlands, DY2 0RL

Tel: +44 (0)1384 267770 Fax: +44 (0)1384 482127
E-mail: enquiries@excelsiorps.co.uk Web: www.excelsior-cubicles.co.uk



The premium flush fronted cubicle solution.

The Flush44 cubicle range is the genuine 'premium quality' system, offering a sleek flush fronted facade, with surface finishes available in both HPL and Natural Veneer, allowing the the most discerning specifier complete satisfaction in their selection.

from creation to installation... you can rest assured

Excelsior have undertaken the manufacture, supply and installation of bespoke washroom products in all washroom environments since 1978. We have a wide selection of safe, attractive and reliable systems to suit all applications, from nursery schools right through to leisure centres and hospitals.

All levels of durability are catered for to meet the end users commercial constraints, combining innovation with practicality.

At Excelsior we offer the Flush44 in three standard formats:

1. 2100mm overall proprietary height incorporating a 100mm pedestal leg and SAA box headrail.
2. Full height up to 3000mm as standard floor to ceiling option with 38mm divisions set into a 'U' section floor channel.
3. Full height 3000mm as standard floor to ceiling option with back to back duct panel divisions offering a 100mm service void.

All three formats incorporate Stainless Steel Ironmongery as Standard and are DDA compliant with outward opening doors complete with 'D' handles to ease access where doors are set to fall closed.

Flush44 is available in several different surface finishes including High Pressure Laminate and Natural Wood Veneers complete with rebated Hardwood edges to all doors and pilasters.

Typical manufacturing period is 5-6 weeks from receipt of approved drawings and colour selection.

Installation by Excelsior is strongly recommended but not essential as a full set of fixing instructions and technical information is provided with the system.

Recommended Sectors:

- Commercial Offices
- Leisure



Flush 44 Cubicle (Floor to Ceiling)

Specifications

Doors and Pilasters:

- High Pressure Laminate PUR bonded onto 44mm MR core
- Rebated Hardwood Edges, sealed 2 coats AC Lacquer

Natural veneers available upon request

Divisions Specification:

- High Pressure Laminate PUR bonded onto 36mm MR core
- Matching Laminate edge detail

Standard Dimensions:

- UPTO 3000mm overall height x 1500mm - 2000mm deep (horizontal joint to suit)

Ironmongery:

- Continuous 'T' section Pilaster fixing channel
- 11/2 pairs Self Closing Butt Hinges
- T201 Indicator if T270 Keep
- 38mm 'U' section floor channel
- Coat Hook - Ref:T501
- Rear wall 'T' section division fixing channel
- Continuous Floor 'U' section division fixing channel

(Excludes Toilet Roll Holder)

Flush 44 Cubicle (2100mm High)

Specifications

Doors and Pilasters:

- High Pressure Laminate PUR bonded onto 44mm MR core
- Rebated Hardwood Edges, sealed 2 coats AC Lacquer

Natural veneers available upon request

Divisions Specification:

- High Pressure Laminate PUR bonded onto 18mm MR core
- Matching Laminate edge detail

Standard Dimensions:

- 2100mm overall height x 1500mm - 2000mm deep (horizontal joint to suit)

Ironmongery:

- Continuous 'T' section Pilaster fixing channel
- 11/2 pairs Self Closing Butt Hinges
- T201 Indicator if T270 Keep
- 38mm 'U' section headrail
- Coat Hook - Ref:T501
- Rear wall 'T' section division fixing channel
- Leg - Ref:T311

(Excludes Toilet Roll Holder)

Ironmongery

1. Internal Handle
2. Hinge
3. Indicator Faceplate
4. Lock Striking Plate



Ironmongery Finish: Satin Stainless Steel as standard.

Colour Selections: Excelsior Cubicle & Washroom Colour Selector.

Special Notes: Outward opening doors complete with back to back Stainless Steel 'D' Handles.

We recommend that outward opening doors open onto an adjacent solid wall to prevent overstrain on hinges.