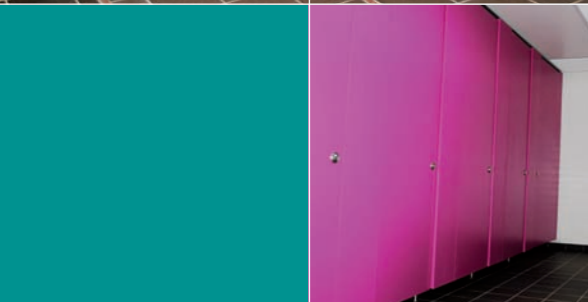


# Flush 30 Cubicle Range

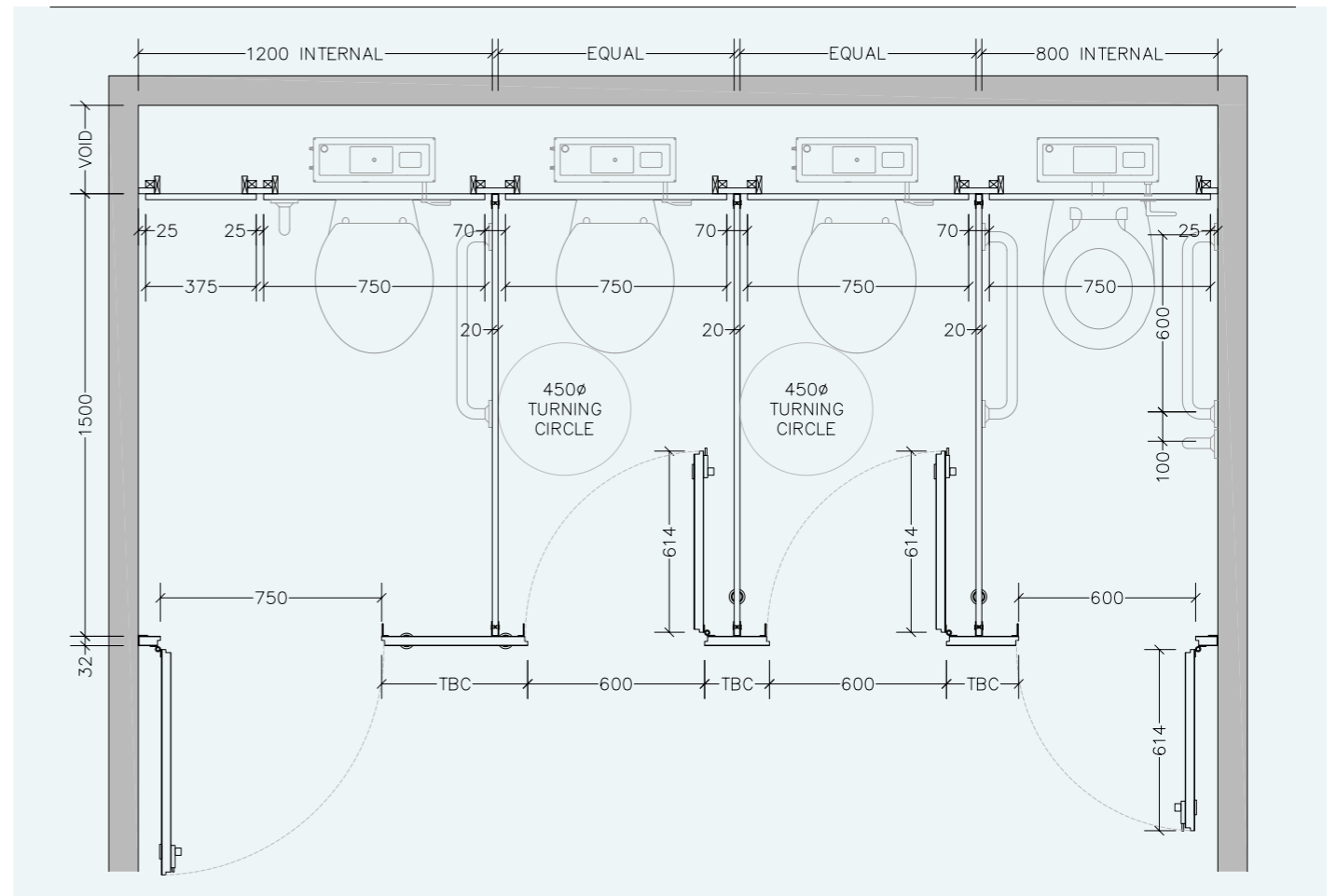
WASHROOMS FOR ALL ENVIRONMENTS



from **creation to installation...**  
you can rest assured

**excelsior**<sup>®</sup>  
washrooms for all environments

## Typical Layout



## Disability Discrimination Act (DDA) BS.8300

The building regulations make provisions for visual contrast between:

- Ironmongery and door faces.
- Some door faces and door edges  
- where doors are not self closing or are held open.
- Door faces and pilasters.
- Handrails and walls.
- Floors and walls.

Contrast visually is given as a difference in light reflectance value (LRV) between two surfaces of greater than 30 points. Excelsior offer a range of both Laminate and Ironmongery colour finishes to comply with these guidelines.

The act also gives guidelines for the minimum requirements for both size and the recommended hardware of Disabled and Ambulant cubicles.

**excelsior**<sup>®</sup>  
washrooms for all environments

Excelsior Panelling Systems Ltd  
Unit 2, Woodside Industrial Estate, Pedmore Road, Dudley, West Midlands, DY2 0RL

Tel: +44 (0)1384 267770 Fax: +44 (0)1384 482127  
E-mail: enquiries@excelsiorps.co.uk Web: www.excelsior-cubicles.co.uk



# The affordable flush fronted cubicle solution.

At Excelsior we have designed the Flush 30 system to be the affordable industry flush facade cubicle offer. Available with HPL surface finishes, hardwood on laminate rebated meeting stiles and stainless steel ironmongery.

## from creation to installation... you can rest assured

Excelsior have undertaken the manufacture, supply and installation of bespoke washroom products in all washroom environments since 1978. We have a wide selection of safe, attractive and reliable systems to suit all applications, from nursery schools right through to leisure centres and hospitals.

All levels of durability are catered for to meet the end users commercial constraints, combining innovation with practicality.

The Flush 30 system is available in two standard formats.

1. 1960mm overall proprietry height incorporating a 150mm pedestal leg and SAA 38mm U section headrail.
2. Upto 2700mm overall proprietry height incorporating a 150mm pedestal leg and SAA 38mm U section headrail (stop fix it voidspace above) or SAA 40mm P section headrail (back fix if limited void space above).

Both formats incorporate stainless steel ironmongery as standard and are DDA compliant with outward opening doors complete with D handles to assist access where doors are set to fall closed.

Flush 30 is available with High Pressure Laminate PUR bonded onto a 28mm MR core, complete with a choice of rebated ABS lipped edges to doors and pilasters.

The Flush 30 range is available on a typical delivery period of 3-4 weeks from receipt of approved drawings.

Installation by Excelsior is strongly recommended but not essential as a full set of fixing instructions and technical information is provided with the system.

### Recommended Sectors:

- Commercial Offices
- Education
- Leisure



### Flush 30 Cubicle (1960mm high)

#### Specifications

#### Doors and Pilasters:

- High Pressure Laminate PUR bonded onto 28mm MR core
- Rebated ABS Lipped Edges

#### Divisions:

- High Pressure Laminate PUR bonded onto 18mm MR core
- Matching Laminate or 2mm ABS edge detail

#### Standard Dimensions:

- 1960mm overall height (c/w 150mm leg) x 1500mm deep

*All Heights Subject to Material/Colour Selection*

#### Ironmongery:

- Self Closing Butt Hinges - Ref: T120 / T121 SSS
- Indicator and Keep - Ref: T201 (20mm)
- L/R (to suit handing) and T270 Keep
- TLine 38mm 'U' section Headrail SAA
- Coat Hook - Ref: T501
- Wall Pilaster Brackets - Ref: T401 L Bracket
- Division/ Pilaster Brackets - Ref:T 411 U Bracket
- Leg - Ref: T351SM Dome foot support - 150mm

*(Excludes Toilet Roll Holder)*

### Flush 30 Cubicle (upto 2700mm High)

#### Specifications

#### Doors and Pilasters:

- High Pressure Laminate PUR bonded onto 28mm MR core
- Rebated ABS Lipped Edges

#### Divisions Specification:

- High Pressure Laminate PUR bonded onto 18mm MR core
- Matching Laminate or 2mm ABS edge detail

#### Standard Dimensions:

- Upto 2700mm overall height (150MM LEG)x 1500mm-1800mm (horizontal joint to suit)

*All Heights Subject to Material/Colour Selection*

#### Ironmongery:

- Self Closing Butt Hinges - Ref: T120 / T121 SSS
- Indicator and Keep - Ref: T201 (20mm)
- L/R (to suit handing) and T270 Keep
- P Section 40mm Headrail SAA
- Coat Hook - Ref: T501
- Wall Pilaster Brackets - Ref: T401 L Bracket
- Division/ Pilaster Brackets - Ref:T 411 U Bracket
- Leg - Ref: T351SM Dome foot support - 150mm
- Option available for 20mm or 100mm legs

*(Excludes Toilet Roll Holder)*

## Ironmongery

1. Hinge
2. Indicator Slide Bolt
3. Leg
4. Indicator Faceplate



**Ironmongery Finish:** Satin Stainless Steel as standard.

**Colour Selections:** Excelsior Cubicle & Washroom Colour Selector.

**Special Notes:** Outward openg doors complete with back to back Stainless Steel 'D' Handles.

Customer to ensure perimeter walls are plumb level at pilaster and partition junctions.

We recommend that outward opening doors open onto an adjacent solid wall to prevent overstrain on hinges.