

Heavy Duty Polypropylene Inspection Housings

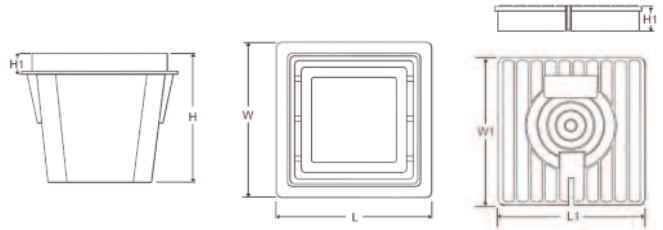
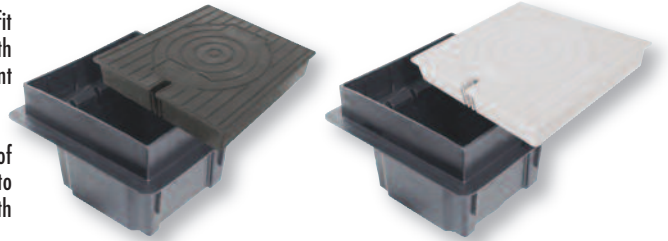
Heavy duty polypropylene earth pits are specifically designed, shaped and sized to fit easily into brick-paved walkways. The lip around the base makes a flush fit with standard sized bricks making the housing blend in without the need for a cement surround. Also suitable for casting into concrete.

Featuring a strong GRP lid, the housings have a maximum loading capacity of 6,000kgs, are UV stabilised against degradation by sunlight and non-brittle to prevent cold weather damage. The lid locks into the base and can be opened with a standard flat screwdriver. Three slots are provided for locating earthbars.

Product features:

- ▶ 6,000kgs load capacity.
- ▶ Lightweight feature enables easier handling, storage and transportation.
- ▶ Compatible with our range of Earth Rod Seal products.

Heavy duty earth inspection housings are able to accept earthbars within the housing, providing additional tape/conductor connection points if required. Supplied without conductor fixing bolts, please order as separate items.



Order Reference	Material	Feature	Footprint Width Dimension L & W	Lid Width Dimension L1 & W1	Height Dimension H	Lid Depth Dimension H1	Weight (kg)	Earthbar Option	Alternative Order Ref:
EPP 001W	Polypropylene	Black Lid	306.0	260.0	216.0	55.0	3.0	EBC 35 or 37	PT205
EPP 002W	Polypropylene	Grey Lid	306.0	260.0	216.0	55.0	3.0	EBC 35 or 37	PT205

Inspection Housing Earth Rod Seals

Modern building specifications often require that ground earthing points have to be located within the building footprint, which means that earth rod electrodes must pass through the building foundation or ground slab. In such applications, where the structure's damp-proof membrane has been pierced, it is necessary to prevent water ingress by installing a suitable sealing mechanism around each earth rod.

Earth Rod Seals offer the most effective solution to this issue. Compatible with the **EPP** range of heavy-duty inspection housings, our seals offer superior features and benefits:

- ▶ Simple to install - very easy to align, with no concerns for damage or leaks.
- ▶ Single seal - one seal fits all earth rod shank diameters. No adaptor kits required.
- ▶ Extremely robust. Industry-unique guarantee of five years.
- ▶ Can be used in concrete slabs upto 3metres thick, to special order.
- ▶ Complies with BS EN62305-3 & BS EN50164-5 (Earth Electrode Inspection housings).
- ▶ Unique sealing gives total earth rod surface contact. Pressure tested to 80psi (5.5bar).
- ▶ High performance, low maintenance solution to earth rod sealing.



Order Reference	Product Feature	Earth Rod Diameter Range	Earth Rod Tube Length	Weight (kg)
WES 001	Single flange, with single seal	14.2-20.0	NA	1.29
WES 002	Double flange, with double seal	14.2-20.0	NA	2.58
WES 003	Single flange, with single seal and earth rod tube	14.2-20.0	300.0	1.18
WES 004	Double flange, with triple seal and earth rod tube	14.2-20.0	1200.0	2.27