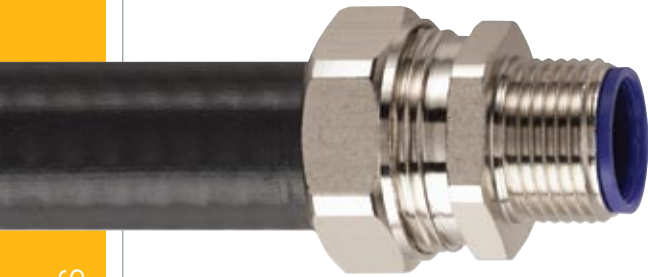


LTP, LTPHC, LTPUL & LTPE

galvanised steel, plastic coated
liquid tight



CONDUIT

LTP

Construction: Galvanised steel, helically wound, flexible conduit with smooth oil resistant and high temperature pvc cover. Colour black. Grey or orange on request.*

Typical Applications: Machine tools or outdoor installations where liquid tight is a requirement.

LTPUL

Construction: Galvanised steel, helically wound, flexible steel conduit including copper bonding strip (up to 32mm) with smooth pvc cover. Colour black.

Typical Applications: As for LTP but where UL listing or CSA approval is required.

LTPHC

Construction: Galvanised steel, helically wound, flexible conduit with smooth thermoplastic rubber cover. Colour black.

Typical Applications: Machine tools or outdoor installations where low or high temperature rating is required. ie. food processing

LTPE

Construction: Galvanised steel, helically wound, flexible conduit with smooth pvc cover. Colour black.

Typical Applications: Machine tools or outdoor installations where liquid tight is a requirement.



FITTINGS

IP66 IP67 IP68 IP69K

C

external thread nickel plated brass

Multipart compression fitting including nylon seal. Can be used for knockout or threaded entries as fitting rotates until tightened.



nominal size (mm)	US trade size (")	outside dia (mm)	inside dia (mm)	LTP part number	reel length (m)	min inside bend radius (mm)	LTPHC part number	reel length (m)	min inside bend radius (mm)	LTPUL part number	reel length (m)	min inside bend radius (mm)	LTPE part number	reel length (m)	min inside bend radius (mm)
10	¼	11.8	7.0	LTP10B ⁺	50	35									
12	⅜	14.2	10.0	LTP12B	25, 50	40	LTPHC12B	25	40						
16	½	17.8	12.6	LTP16B	10, 25, 50	45	LTPHC16B	25	45	LTPUL16B	25	50	LTPE16B	25	45
20	¾	21.1	16.0	LTP20B	10, 25, 50	65	LTPHC20B	25	65	LTPUL20B	25	90	LTPE20B	25	65
25	1	26.4	21.0	LTP25B	10, 25, 50	100	LTPHC25B	25	100	LTPUL25B	25	110	LTPE25B	25	100
32	1 ¼	33.1	26.5	LTP32B	10, 25	135	LTPHC32B	25	135	LTPUL32B	15	140	LTPE32B	10, 25	135
40	1 ½	41.8	35.4	LTP40B	10, 25	175	LTPHC40B	10	175	LTPUL40B	15	180	LTPE40B*	10, 25	175
50	2	47.9	40.4	LTP50B ⁺	10, 25	230	LTPHC50B ⁺	10	230	LTPUL50B ⁺	15	230	LTPE50B*	10, 25	230
63	2 ½	59.7	51.6	LTP63B ⁺	10, 25	280	LTPHC63B ⁺	10	280	LTPUL63B ⁺	15	280	LTPE63B*	10, 25	280

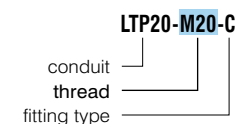
metric thread part number	PG thread part number	NPT thread part number
LTP10-M12-C		
LTP10-M16-C		
LTP12-M16-C	LTP12-PG9-C	
LTP16-M16-C	LTP16-PG11-C	
LTP16-M20-C	LTP16-PG13-C	LTP16-050-C
LTP20-M20-C	LTP20-PG16-C	LTP20-050-C
LTP25-M25-C	LTP25-PG21-C	LTP25-075-C
LTP32-M32-C	LTP32-PG29-C	LTP32-100-C
LTP40-M40-C	LTP40-PG36-C	LTP40-125-C
LTP50-M50-C	LTP50-PG42-C	
LTP63-M63-C	LTP63-PG48-C	

Note: Stainless steel fittings also available see page 29

ORDERING NOTES

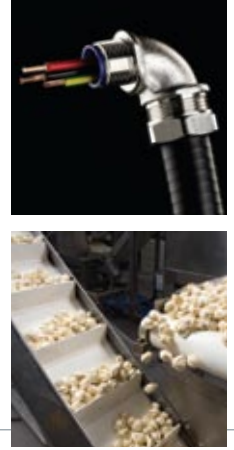
- Add reel length eg: LTP20B-25M for a 25m reel
- For LTP specify colour (B = Black, G = Grey)
- * Indicates parts made to order on request and may be subject to MOQ and lead time
- + Double interlock section
- **Available on request:**
 - longer lengths and bulk packaging
 - cut lengths and assemblies
 - C-S with PG threads
 - other colours
 - internal thread fittings

How to read the fittings code



properties

- High mechanical strength
- IP rating: IP66 + IP67 + IP68 (5 bar) + IP69K
- Smooth, wipe clean outer cover
- Cover does not wrinkle when bent
- Temperature range
 - 20°C to +105°C (LTP)
 - 45°C to +135°C (LTPHC)
 - 15°C to +75°C (LTPUL)
 - 15°C to +70°C (LTPE)
- LTP has Lloyd's Register Type Approval
- LTPUL conduits are UL listed and CSA approved
- Resistant to oils and greases (except LTPE)
- Good flexibility
- UV resistant (black) and suitable for external use
- Nickel plated brass or stainless steel fittings as shown on page 29
- Vibration and shock tested to EN61373 Cat 2



IP66	IP67	IP68	IP69K	IP66	IP67	IP68	IP69K	IP66	IP67	IP68	IP69K	IP66	IP67	IP68	IP69K								
C-S				C90				C45				coupler				E	FCC						
swivel external thread nickel plated brass				external thread nickel plated brass				external thread nickel plated brass				nickel plated brass				insert nickel plated brass		plated steel P clip with pvc liner stainless steel P clips					
Compression fitting for knockout or threaded entries.				90° multipart compression fitting including nylon seal. Can be used for knockout.				45° multipart compression fitting including nylon seal. Can be used for knockout.				Multi part compression coupler including nylon seals to join 2 conduits.				Single part, machined insert to cap end of conduit.		P clip to support conduit.					
Multipart compression fitting including elastomeric seal. The external thread swivels about the main body even after tightening.																							
metric thread part number				metric thread part number				metric thread part number				part number				part number		plated steel part number		stainless steel part number		nominal size (mm)	
																LTP10-E		FCC10		FCC10-SS*		10	
																LTP10-E		FCC10		FCC10-SS*		10	
LTP12-M16-S				LTP12-M16-C90												LTP12-E		FCC12		FCC12-SS*		12	
LTP16-M16-S				LTP16-M16-C90												LTP16-E		FCC16		FCC16-SS		16	
LTP16-M20-S				LTP16-M20-C90				LTP16-M20-C45								LTP16-E		FCC16		FCC16-SS		16	
LTP20-M20-S				LTP20-M20-C90				LTP20-M20-C45				LTP20-LTP20				LTP20-E		FCC20		FCC20-SS		20	
LTP25-M25-S				LTP25-M25-C90				LTP25-M25-C45				LTP25-LTP25				LTP25-E		FCC25		FCC25-SS		25	
LTP32-M32-S				LTP32-M32-C90				LTP32-M32-C45								LTP32-E		FCC32		FCC32-SS		32	
LTP40-M40-S				LTP40-M40-C90				LTP40-M40-C45								LTP40-E		FCC40		FCC40-SS		40	
LTP50-M50-S				LTP50-M50-C90				LTP50-M50-C45								LTP50-E		FCC50		FCC50-SS*		50	
				LTP63-M63-C90				LTP63-M63-C45								LTP63-E		FCC63				63	

STANDARDS



BS EN IEC 61386



* refer to conduit properties for applicable standards

TECHNICAL DRAWING

