

NEW BUILD



THE BEST WINDOWS ARE MADE FROM



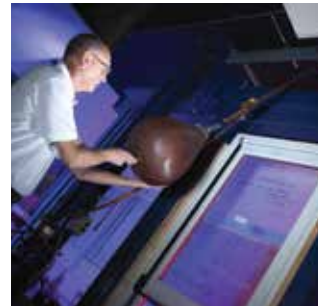
Why choose Profile 22?

Profile 22 is the UK's leading PVC-U window and door systems company boasting more than 40 years' experience.

In fact Profile 22 has been dealing with house builders since the early use of PVC-U in new build housing. We introduced the original 'press to fix' window and former in the UK, which our technical team developed by working closely with house builders. Since then we have remained at the forefront of the industry, developing our business and products alongside house builders anticipating the needs of this evolving market.

Our products not only deliver performance advantages and unrivalled green credentials, but you have the benefit of an experienced team who are committed to offering you consistent and reliable support you can count on.

- Launch of two new profile systems 'Optima' representing unrivalled thermal performance and innovative design
- Working with windows since 1976
- Committed to protecting the environment and reducing carbon emissions through recycling, manufacturing low carbon products and company initiatives
- Dedicated specification support team
- Nationwide network of Approved Window Contractors
- 52,000 frames manufactured using Profile 22 every week
- Part of the £300m Epwin Group





At the forefront
of the industry

THE BEST WINDOWS ARE MADE FROM





Practical steps

The Government's commitment to reducing carbon emissions has led to the strengthening of the Building Regulations and legislation aligned with European Policy, specifically "Energy Performance of Buildings Directive" which requires all new buildings to be nearly Zero Energy Buildings from 2020.

Professional Service

We know you expect high standards, reliable deliveries and consistent high quality. Profile 22 and its network of Approved Window Contractors provide this as standard – bringing you a positive experience through a professional service. We offer:

- Comprehensive specification advice including the extensive choice of products and valuable legislation information
- Design service and assistance including technical drawings
- Liaison with architects and surveyors to ensure the window designs comply with Building Regulations and provide you with optimal performance
- Clear project planning
- BIM objects
- Reliable lead times and scheduled site deliveries
- Approved Window Contractor with specific new build expertise and local knowledge



THE BEST WINDOWS ARE MADE FROM



Zero Energy Buildings from 2020

Private, Social and Commercial

According to the Department for Communities and Local Government, homes account for around 27% of the UK's carbon emissions, a major cause of climate change. As part of its commitment to reducing carbon emissions, the Government's target is to achieve nearly Zero Energy Buildings by 2020, aligning itself with European Policy.

The progressive strengthening of Building Regulations is the key method by which the Department for Communities and Local Government (DCLG) will legislate towards the achieving this target. The legislation affecting windows and doors is Part L, which covers 'Conservation of Fuel and Power' in new and existing dwellings and can be referred to as the 'Energy Efficiency' part of Building Regulations.

New houses built to the new regulations are more energy and water efficient, produce fewer carbon emissions, boast lower running costs and are better for the environment.

Understanding the regulations

March 2015: The Home Quality Mark "star system" for rating the sustainability of new homes was introduced. Developed by Building Research Establishment (BRE) as a voluntary standard for developers replacing The Code for Sustainable Homes.

2014 Edition - proposed 44% strengthening in regulations, roughly equivalent to Level 4 of the Code for Sustainable Homes.

April 2014: The DCLG published revisions to Part L to include a 6% cut in carbon emissions for new build homes on the 2010 standards.

March 2010: the Housing Minister announced the amended Part L - all new homes must now be 25% more efficient, equivalent to the Code for Sustainable Homes Level 3.





Achieving the best possible ratings

As a buyer you may be familiar with The Home Quality Mark (HQM) and “My Home” star rating system created by the BRE. Designed to help house builders demonstrate the high quality of their homes and instill confidence in buyers or renters that the home is well-designed and built, and cost-effective to run.

“My Home” sets specific performance outcomes and uses commonly used assessment methodologies. These include the extended Building Regulations calculation, Passivhaus certification and performance modelling to calculate performance relating to energy, comfort and overheating.

Profile 22 are here to help guide you to the best option for your project. Many of Profile 22's window systems have been designed to Passivhaus standard to achieve 0.8 with triple glazing and WER A++.

Our window and door systems are not only highly thermally efficient, but are able to use both recycled materials and be fully recycled at the end of their impressive 35 year life-cycle, more than 10 times.

Selecting the right products for every element of house is crucial, earning the stars needed to achieve the best possible rating.

THE BEST WINDOWS ARE MADE FROM





Profile Systems - 70mm Suite

We offer a complete suite of profiles so the right product can be chosen whatever the installation.

Our new profile suite Optima represents the latest innovation in windows and doors with its design and unrivalled thermal performance. Optima is suitable for many applications including casement, tilt & turn and French casement, and both residential and French doors.

Open-out windows are available in a variety of single or multi-light styles, using top hung vents, side-hung casements and fixed lights - all high performers fully compliant with the Building Regulations.



Optima-C is a fully integrated 70mm depth slim, modern design chamfered 5/6-chambered system*



Optima-S is a fully sculptured 70mm depth system with a distinctive decorative appearance 5/6-chambered system*

Our other systems

Retail Flush Casement - is a 70mm flush 6/4 -chambered window system designed specially for retail and new build*

Commercial Flush Casement - is a 70mm, 5-chambered, flush casement window system available in larger sizes for the commercial projects.

Flush Tilt-Turn - is a 70mm flush 6/5 tilt-turn window system designed to prevent framework overlap.

Fully Reversible - is a 70mm, 5-chambered, window system suitable for medium-high rise and inaccessible locations.

Internal and external glazing

Decorative Optima-S Sculptured 70mm system is available internally or externally beaded. The Optima-C fully integrated chamfered system is internally beaded. All systems are available as either double or triple glazed units.

Fully integrated systems

Profile 22 systems have been designed on the basis of full integration, utilising common parts and offering the house builder more design options.

These high performance systems have been carefully designed to meet the requirements of regional Building Regulations throughout the UK including variations for Wales, Scotland, Northern Ireland and for the Republic of Ireland.

* First figure no. of outerframe chambers / second figure no. of sash chambers.

THE BEST WINDOWS ARE MADE FROM





Casement

Available in a choice of Optima-C (chamfered) or Optima-S (sculptured) 70mm window systems for a wider choice of product.

Open-out windows are available in a variety of single or multi-light styles, using top hung vents, side hung casements and fixed lights, complies with all high performance requirements of the UK Building Regulations.

Vertical Sliders

Designed to deliver all the benefits of high performance modern materials, the Vertical Slider is a cost effective solution to retaining the characteristics and design of period buildings.

The authentic looking sash window with ovolo frames provide optimum strength, superior thermal protection and excellent weathering performance and with the minimum maintenance, will retain their appearance year after year.

Retail Flush Casement

The Retail Flush Casement also provides the perfect solution for new build homes when a traditional flush appearance is preferred, or to achieve cottage-style 'period' design to replicate a traditional timber window.

Commercial Flush Casement

The Commercial Flush Casement is ideal for modern apartment buildings and overcomes the issues with the traditional casement style window, when a more 'flush' appearance and a larger window is needed.



Fully Reversible

Especially designed for medium-high rise applications and inaccessible locations, our 70mm Fully Reversible Window has been manufactured using low carbon technology and pioneers 'thermal barrier' technology the secret ingredient to achieving greater thermal performance. These windows can be completely rotated without intruding into the room space.

Flush Tilt-Turn

Our externally Flush Tilt-Turn window is specially designed to avoid the overlapping of the framework that is often synonymous with PVC-U systems. The sash is neatly positioned inside the frame of the window to create an elegant and sleek flush appearance. The functionality of the window has all round locking, is internally glazed and opens inwards providing excellent security and weather tightness.

Tilt-Turn

These all-round locking, internally glazed, open-in, 70mm depth windows provide excellent security and weather tightness.

Operation provides improved child safety and the ability to carry out internal and external cleaning without risk - a vital consideration in high-rise applications.

In the tilt mode the window offers secure ventilation, an important factor in ground floor installations.



THE BEST WINDOWS ARE MADE FROM





Multiple
Options

Tradition with style

Georgian bar

- Bars can be applied to one or both sides of the window or within the sealed unit, as required
- Available in white and woodgrain foil finishes
- Match traditional openings such as box sash or vertical sliding windows with modern performance

Mock horn

- The appearance of mock sash and case windows can be achieved combining traditional design and aesthetics with the modern benefits of energy efficiency, enhanced security and noise reduction.

Colours

A diverse range of coloured foil finishes designed to achieve a long-lasting, low maintenance and cost effective option for PVC-U windows and doors.



THE BEST WINDOWS ARE MADE FROM



Winfast

Cavity Closer and Former System

Winfast cavity closer and former system is manufactured from 98% recycled PVC-U and is designed to work with all modern methods of construction.

This versatile cost-effective cavity closer system provides many benefits such as a template for window apertures, simple and effective frame location and also features built-in sealing. This means that windows can be fitted internally, improving thermal performance and overcoming a raft of health and safety regulations. Designed to work just as effectively with timber and PVC-U window and doorframes, the system can be installed in 100mm cavities only.

Winfast is a made to measure system designed to drop straight into the cavity without adjustment on site. The sub-frame acts as horizontal and vertical damp proof membrane and can be used as a former as brickwork is built up stabilised with specialist brick ties, PVC-U brace and shoes. It allows you to install in minutes from the inside, without scaffolding and special brackets. The secret is a unique locking system (patent applied for) that fits the frame in place immediately. Once fitted, the frame only requires sealing under the cill and to the brickwork at the jamb head.

- BBA approved certificate no. 01/3827
- Window and door former for timber frame or brick and block construction
- Allows windows to be fitted from the inside
- Ensures Building Regulations compliance including Document L
- Head vents provides overhead ventilation to Approved Document F
- Designed for 100mm cavities
- Window frames fixed by a unique cam system - no drilling required
- Window frames retained within a sealed rebate, improving thermal efficiency and weather resistance
- Fast fit: Time saving of up to 66% gained compared to conventional window installation
- Cost effective: Cost savings of up to 40% gained compared to conventional window installation
- Acts as a horizontal and vertical DPM
- 98% recycled content





THE BEST WINDOWS ARE MADE FROM







Doors

Residential doors

A complete suite of 70mm door solutions available in a variety of finishes to match infill panels to complement any home.

- Internally glazed as standard
- Open in or open out
- Medium and low thresholds (Document 'M' compliant)
- Dedicated hardware
- Chamfered and sculptured designs

Composite doors

Profile 22 has created a unique 70mm framing system for composite doors and side panels.

- Dedicated hardware
- Unique 70mm framing system for composite doors and side panels
- PAS 24 enhanced security
- Range of low threshold solutions (Document 'M' compliant)



In-line sliding patio doors

Profile 22 has designed and developed Britain's favourite in-line sliding patio door - PatioMaster.

- Slim stepped 86mm outerframe
- Internal sliding panels for added security - 2, 3 and 4 pane
- Optional low track, low threshold system
- Lowline gasket co extruded to sash
- Six point locking system for outstanding security
- Excellent weather performance and draft proofing
- Enhanced security options available

THE BEST WINDOWS ARE MADE FROM



French Doors

Accommodates the full range of 70mm window and door systems for a wider choice of product.

- Open-in, open-out options
- Dedicated floating mullion
- Double handle options
- PAS 24 enhanced security

Bi-fold Doors

Manufactured from durable PVC-U, our thermally efficient, low-maintenance range of bi-folding doors effortlessly glide open to provide you with maximum utilisation of unobstructed space.

- Thermally efficient
- Low-maintenance
- Range of finishes
- Smooth glide roller system
- Multi point locking
- Up to 22 different styles
- 3 to 7 leaves

Hardware

The Safeware range of hardware is unique to Profile 22, designed especially for our systems it covers our complete range of window and door products and provides you with an unrivalled choice. One of the many benefits of working with us is that we can offer you the flexibility to choose exactly the level of security and aesthetics that you need.

- High performance
- All products are manufactured to the highest levels of quality
- Secured by Design
- Full accreditation to all relevant BSI Kitemarks







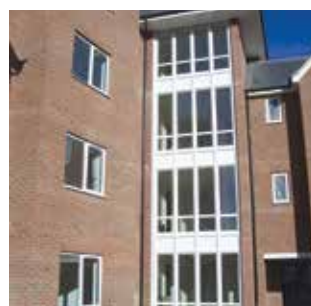
High Performance

Curtain Walling

A purpose-developed curtain walling system from Profile 22, offers architects and house builders best value, greater choice and flexibility for large fenestration screens.

The high performance curtain walling is a thermally broken PVC-U clad aluminum system giving superior strength aesthetics, thermal efficiency and excellent weather performance, fully compliant to the latest standards and legislation.

- High performance, Bsi tested
- Improved aesthetics
- Colour design with a full range of colour finishes
- Internal and external PVC-U cladding for colour and material match
- Accommodates full range of 70 mm window and door systems
- Choice of direct glaze insulation and spandrel panels
- Simple and quick installation



THE BEST WINDOWS ARE MADE FROM



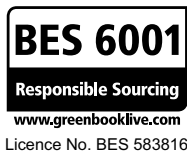
Low Carbon System

Profile 22 takes its carbon footprint very seriously and is the first window and door systems company to achieve the BES 6001 accreditation.

Optima has more integral chambers and more expansive glass area allowing for greater thermal performance. The 6-chambered outerframe and 5-chambered sash can offer thermal U-values as low as 0.8 W/m²K and A++ Window Energy Ratings (WER).

Our innovations in PVC-U building technology have made a significant contribution in PVC-U's Green Guide ratings from the Building Research Establishment - something that also scores PVC-U windows additional points under the Home Quality Mark "star system".

If you are carbon conscious about the products you specify and what materials they comprise of, choose Profile 22 who can prove their products are sourced responsibly. Profile 22 is proud to hold the BES 6001 Responsible sourcing of construction products accreditation.



We do more

It's not just what we say, it's what we do

Nobody has done more than Profile 22 to develop innovative high performance PVC-U windows and doors for the new build sector, helping builders within the social, private and commercial new build arena to optimise the energy-efficiency of the homes they build.





THE BEST WINDOWS ARE MADE FROM



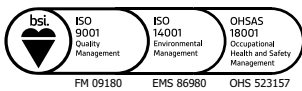
For further information

call 01952 290910

Email: specifier@profile22.co.uk

www.profile22.co.uk

Profile 22 Systems, Stafford Park 6, Telford, Shropshire, TF3 3AT



BS EN 12608
KM12895
PROFILE



BS EN 12608/PAS24
KM33523
ENHANCED SECURITY
WINDOW SYSTEMS
SUPPLIER



BS EN 12608/PAS24
KM56791
ENHANCED SECURITY
DOOR SYSTEMS
SUPPLIER



BS 8529/PAS24
KM594776
ENHANCED SECURITY
DOOR SYSTEMS
SUPPLIER



PROFILE 22 is an international PVC-U profile system supplied to local independent manufacturers and installers who contract to install windows, doors and conservatories. PROFILE 22 SYSTEMS cannot be held accountable for manufacture or installation by independent companies. All information in this publication is provided for guidance only and is given in good faith. As it is company policy to continually improve products, methods and materials, changes of specification may be made from time to time without prior notice. This statement does not affect your statutory rights. © PROFILE 22. Part of the Epwin Group Plc. PRO/15117

