

KEEPING YOUR
**FLUSH TILT
& TURN
WINDOWS**
IN TIP-TOP CONDITION



Spectus[®]
WINDOW SYSTEMS

Your **windows**

Keeping anything in tip-top condition does require a little bit of effort, but, thankfully, no one expects you to lift weights or run miles to look after your windows. A tiny bit of TLC will keep them working perfectly for years and years.

About your windows

Flush Tilt & Turn windows have two modes of operation:

- 1 They tilt inwards for ventilation
- 2 They can swing into your room so that the exterior glass can be cleaned safely from indoors.

When closed, a locking mechanism secures the window using espagnolettes or cams which fit into keeps fitted to the window frame. In this locked position the window's seals are fully engaged keeping out the wind and the rain. When the window is fully opened into your room, it also offers the possibility of an escape route in case of emergency.

Your windows are made from durable, impact resistant PVC-U, which is a doddle to maintain. The frames are reinforced for strength and rigidity and the hinges, locks and gearing mechanisms have been selected for a long, trouble-free life.



Operating **your windows**

The handle has three positions:

- 1 Closed – the handle is vertically downwards
- 2 Tilt – turn the handle through 90° and pull the window inwards. It will tilt along a hinge at the base
- 3 Turn – turn the handle vertically upwards. The window can now swing into the room on a side hinge.

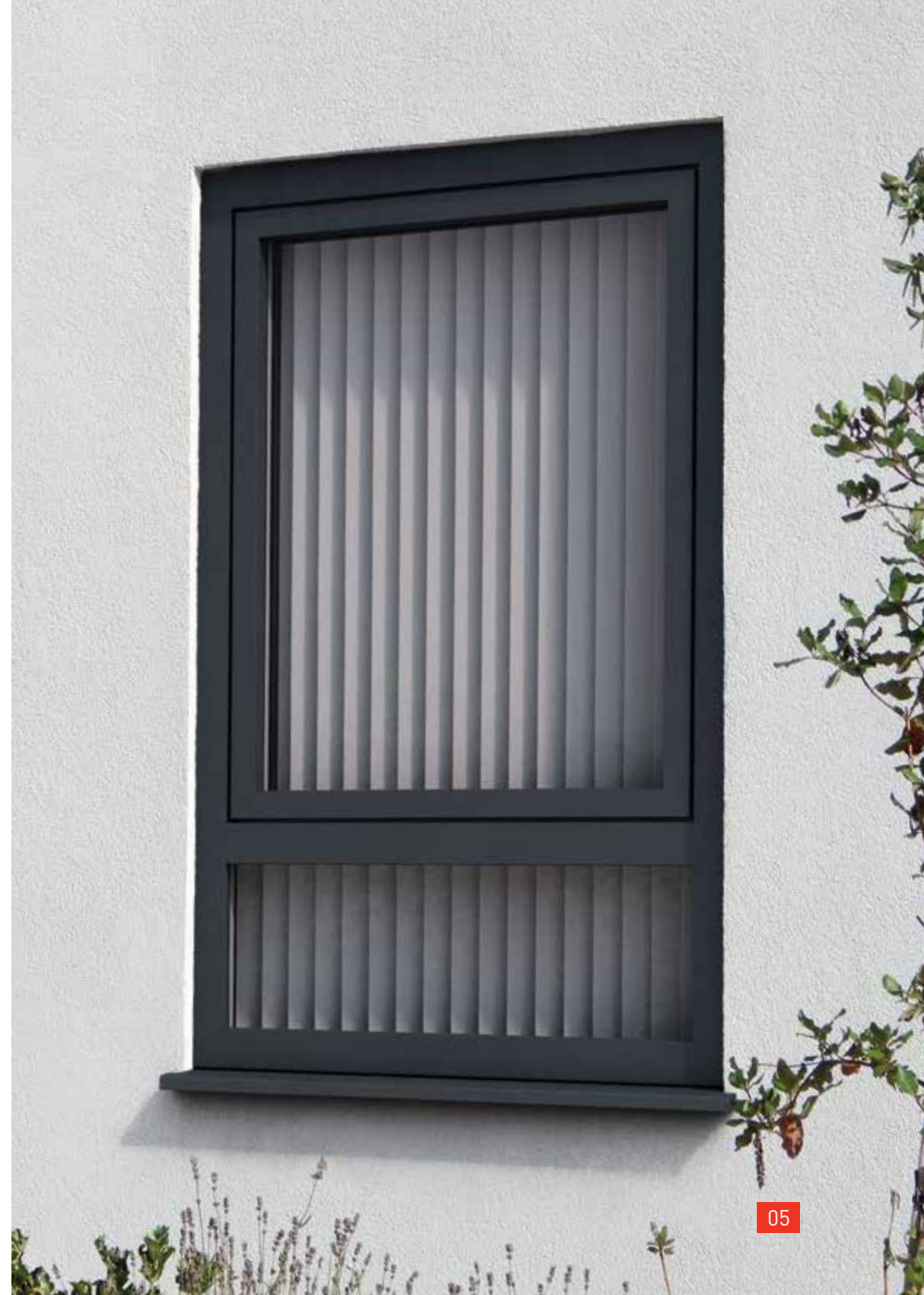
Note that these windows have an 'anti-switch' barrier, which means that they cannot be accidentally moved from tilt to turn mode. The only way to switch modes is to push the window closed and turn the handle.



Tilt mode - top ventilation position



Turn mode - maximum ventilation and for cleaning of outside pane



How to take care of **your windows**

You don't need to spend long on the job. How much cleaning is required depends on your location, but like all tasks, it's easier if you keep on top of things.

For lubrication, once or twice a year should suffice. Use light machine oil (e.g. 3-in-One) for moving parts and petroleum jelly for the keeps.

Glass cleaning

It's possible to scratch glass with jewellery (diamonds are used for cutting and drilling in all sorts of industries!) so we recommended that you take care or remove jewellery. You can remove heavy external grime with soap and water and a soft cloth, and then use any proprietary household cleaner to finish off.

PVC-U frame cleaning

It's important to avoid using solvent-based or abrasive cleaners. Wash frames with soap and water periodically to remove any dirt and atmospheric deposits. If there are any stubborn marks, use Siroflex 5x or an alternative non-abrasive proprietary cleaner. Take care not to disturb sealants.

Tilt & Turn locking mechanism

Keep sliding mechanisms free of dirt and lubricate each slot with light machine oil as required.

Keeps

Lubricate the faces of the keeps with petroleum jelly.

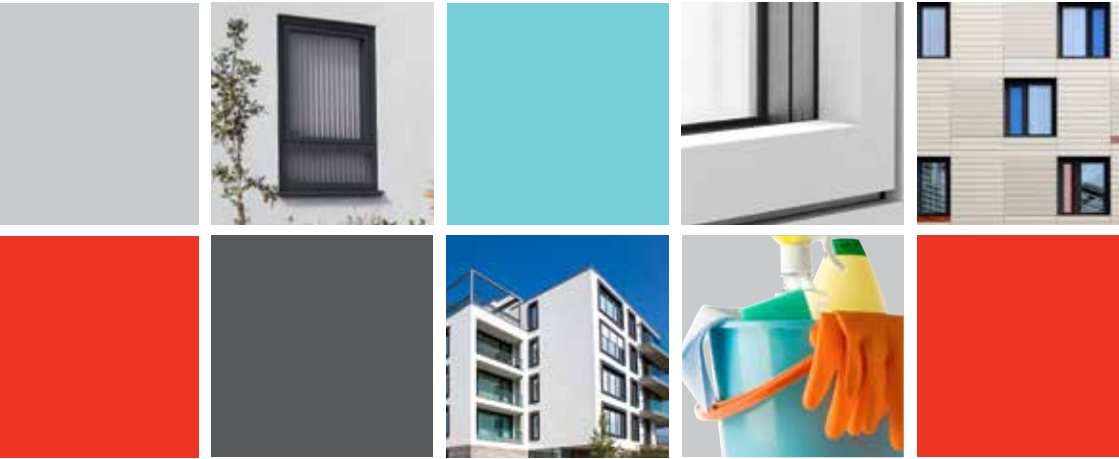
Handles

Clean and lightly oil moving parts.

Expert advice

If you're not sure what to do or are having any problems, contact your installer. Or call us – we're always happy to help.





www.spectus.co.uk



Spectus[®]
WINDOW SYSTEMS