

Technical Specifications

Hyperion® Explorer Cladding Boards

Beautifully engineered, B Class fire rated (EN13501-1) composite cladding boards are perfect for both residential and commercial settings. The boards are easily installed with a simple hidden tongue and groove fixing.

Overview

Length
2.5 & 4m

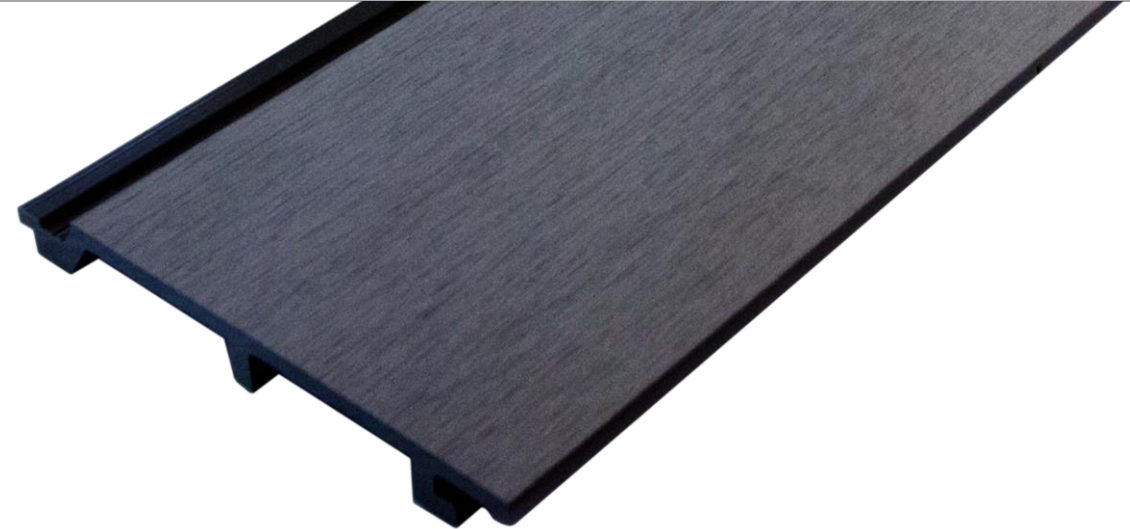
Profile
173 (150 face) x 19 mm

Material
Wood-Plastic Composite

The data provided in EnviroBuild technical specifications are correct at the time of publication. EnviroBuild is continuously looking to improve existing products and increase transparency through further tests, meaning some information may change. EnviroBuild reserves the right to update Technical Specifications as and when we become aware of any changes to the data.

Company Number
09662640

Registered Office
29 Pear Tree Street,
London, EC1V 3AG



Granite

Stone

Silver Birch

Walnut

Oak

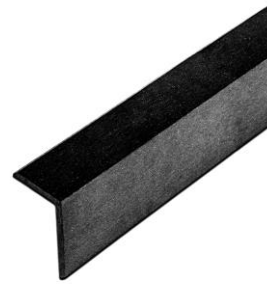
Hyperion® Explorer Cladding Board Technical Data

Main Properties

Property	Attribute
Dimensions (mm) WxHxL	173 x 19 x 2500 & 4000
Material	Wood-plastic composite FSC® 100% Certified wood powder 85% recycled content
Finish	Brushed surface, uncapped
Weight	1.93 kg/m
Colours	Granite, Stone, Silver Birch, Walnut, Oak
Fixtures	Self tapping or drilling flange head screw
Warranty	15 years residential 10 years commercial
Linear Thermal Expansion Coefficient EN 15534-1	$46.8 \cdot 10^{-6} \text{ K}^{-1}$
Reaction to Fire EN 13501-1	B-s3-d0
Water Absorption	5.46%
Screw Pull Out EN 15534-1	479N
Maximum Span (mm)	600

Accessories

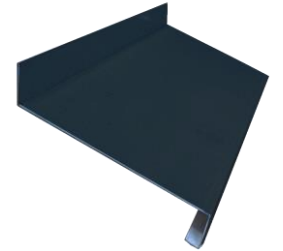
Corner edge cover



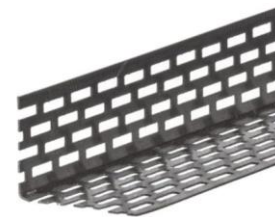
Fascia board



Drip tray



Insect Mesh



Flanged head fixing screws



Countersunk colour match screws

