



envioblinds[®]
LOW CARBON TECHNOLOGY



roller screens

- *Highly durable fabrics, polyester or glass fibres with PVC coating*
- *Options for see through translucent or blackout fabric*
- *Guides made from aluminium profiles available in RAL colours*
- *Insect proof and wind tight when used with zip seal*
- *Ideal for retrofit & new build installation*
- *Roof light screen systems*
- *Optional sun & wind sensors*
- *Manual & motorised operation with remote control or switch*



Envioblinds external roller screens make interiors more comfortable and cool on sunny days. These stylish screens offer thermal protection, taking away the heat and the glare of the sun.

Easy to maintain dirt repellent fabrics are available in a wide choice of colours to complement and enhance the building façade. Screens made with see through translucent fabric offer a view of the outside; even when fully lowered, whilst allowing ventilation into the room. The unique zip seal system is wind tight attaching the screen securely to the aluminium side guides and in a closed position may be used as an insect screen. With optional sun and wind sensors, which raise or lower the screens according to the weather, you have complete peace of mind even when the building is unoccupied. Perfect for bi-folding doors, sliding doors and large openings with a large maximum width of 5 metres.





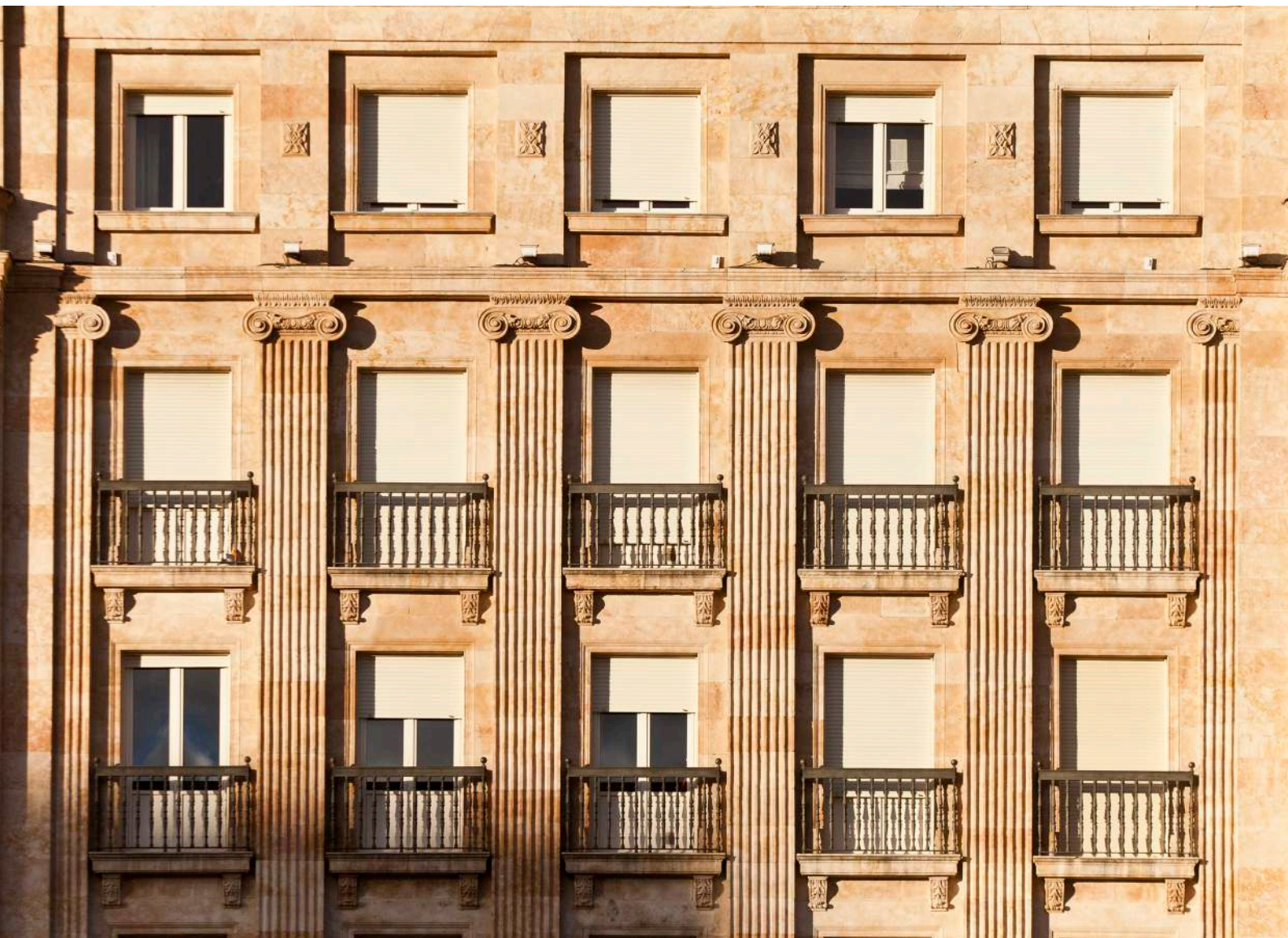
external venetians

- *Aluminium alloy slats available in different sizes and shapes*
- *Galvanised u shaped aluminium headrail, bottom rail made in extruded aluminium*
- *Stainless steel cable side guides*
- *Optional extruded aluminium side guides for wind resistance*
- *Ladder cord made from durable terylene polyester*
- *Available with sun & wind sensors*
- *Manual & motorised operation with remote control or switch*
- *Headrail and mechanism can be concealed*

Enviroblinds exterior venetian blinds are ideal for blocking out heat, keeping you cool and comfortable indoors whilst allowing sunlight into the room. External venetians do this better than internal venetians because they reflect the heat away before it gets through the window.

Available in a choice of over 20 colours, these blinds not only look modern and stylish but are also very practical, fully closing to protect against the weather with optional side guide rails to secure the blinds in windy conditions. The special design of the aluminium slats and connecting system offers a compact and robust system which can be concealed in recesses of just 110mm or face fitted up to a width of 5 metres.





roller shutters

- *Windows, doors & garage doors*
- *Retrofit & new build*
- *Manual or motorised operation*
- *Save on heating and cooling*
- *Acoustic insulation*
- *Total black out*
- *Protect the window*

Enviroblinds external roller shutters, offer excellent energy saving performance and were nominated by CIBSE Building Performance Awards in 2014 as energy saving product of the year. Made from insulated, foam filled aluminium slats, these shutters can save on heating energy by 10-20% and cooling by 80-90%.

Made from aluminium which is infinitely recyclable, our rollers shutters and solar shading products are made of the best material for its function and the environment. Enviroblinds external roller shutters are extremely durable. Installations in modern and classic architecture across Europe prove that they stand the test of time and are suited to warm and cooler climates.



When lowered, the shutters can be adjusted so that the perforations between the slats allow light and ventilation into the room. In a fully closed position, the shutters reduce noise levels inside the room, offer total black out and protect the window.

Enviroblinds security shutters are made from extruded aluminium and are available in a full range of RAL colours with options for solid or cut-out slat curtains, which are ideal for shop fronts.





louvres

- *Customised design and manufacture*
- *Fixed, sliding or folding louvres*
- *Choice of aluminium, timber or pvc composite*
- *Choice of RAL colours*
- *Manual or motorised*

Envirolouvers are customised design shading systems which reduce over heating from the sun and enhance the building façade. Kinetic, adjustable and sliding louvres not only regulate temperature and light but also provide a unique and dynamic design feature.

Made from extruded aluminium, timber or pvc composite in a full range of colours, these louvre systems can be mounted onto fixed frames, adjustable frames or a combination of both. The supporting frames can be concealed in the side guides with a unique stainless steel blade fixing system and designed for curved buildings using concave or convex ellipsoid blade systems.



Sliding louvre shutters are ideal for residential apartments providing sun shade and privacy in built up areas.

Fixed louvres dress the façade of a building and can be used to conceal equipment and mechanical plant.





brise soleil

- *Fixed or mobile*
- *Anodised or full range of RAL powder coating*
- *Self-supporting or choice of supporting systems*
- *System design for curved wall buildings*
- *Extended canopies including walkways*

Enviroblinds brise soleil offers a complete external shading system for control of solar heat gain and glare through glazing. Made from ellipsoidal shaped blades in extruded aluminium, these versatile shading devices can be self-supporting or supported with a choice of stainless steel cables or aluminium columns for a wider depth of canopy.

Various configurations including curved, fixed and mobile shading systems for installation above or in front of the window, offer an unrivalled choice of options. Mounted above the window, our brise soleil are ideal for bi-folding doors and retrofit installations where the window or door open outwards. These options combined with the various angles at which the system can be installed, ensures that optimal shade is created.

Enviroblinds brise soleil can also be designed for use as walkways to facilitate maintenance and cleaning of windows.





aluminium pergola

- *Free standing or wall mounted*
- *Fully adjustable roof*
- *Tilting adjustable roof blades*
- *Sliding doors in glass or fabric screens*
- *Integrated water gutters*
- *Sun, wind and rain sensors*
- *LED lights*
- *Modules can be connected*

Envioblinds aluminium pergolas are the perfect solution to transform your outdoor terrace into additional living or working space. Choose from a range of free standing pergolas or wall mounted pergolas with fully closing roofs and doors to create a modern looking conservatory.

Options include fully opening and closing roofs in water proof fabrics. Roofs with tilting aluminium slats allow control of the sun and ventilation. To fully close from all sides, sliding doors in glass or roller fabric screens with aluminium frames can be specified.

Open the roof and doors to enjoy the sunshine or simply close to protect against the weather. The sturdy roof combined with doors and integrated water gutters draining into the posts, ensures the pergolas are weather proof. Optional sun, wind and rain sensors will automatically close or open the roof to give you complete peace of mind. Modules can be connected to extend your pergola and increase your living space at any time.





awnings

- *Patio awnings*
- *Pivot arm awnings*
- *Terrace awnings*
- *Ideal for use with bi-fold doors*
- *Option for printing with corporate logo*

Sail Awning

- *Free standing awning with motorised system*
- *Aluminium frame with stainless steel components*
- *High-resistance fabric as used for ship sails*
- *Optional wind control & LED lights*



Enviroblinds awnings include folding patio awnings, pivot arm awnings and terrace awnings. Awnings are ideal for keeping the heat out and can cover large outdoor areas or be fitted just outside the window. Available in over one hundred colours with frames available in all RAL colours, Enviroblinds awnings enhance the external appearance of your building whilst providing outside shade and a cool, comfortable temperature indoors. Operation can be either manual or electric, with an option for automatic wind and sun sensors.

Enviroblinds sail awnings provide solar shading and an elegant design feature for your outdoor space. Cleverly designed with all mechanisms and motors concealed in the structure; the sail is tensioned and extends or retracts to any position.





At Enviroblinds, we are passionate about low carbon, energy saving external blinds and solar shading systems which transform a building climatically and visually. External shading is the most energy efficient means of reducing overheating in buildings from excess solar gain. Inspired by the widespread use of external blinds in architecture across Europe, we have sourced the best quality products from European manufacturers to offer you an unrivalled choice of systems. We have a product for your project, however big or small, that is guaranteed not only to lower your carbon footprint but also to enhance the design of your building facade.

We are here to help

Please call or email us with details of your project

enviroblinds®

LOW CARBON TECHNOLOGY

Enviroblinds Ltd

No 5, Level 5 (South), New England House
New England Street, Brighton BN1 4GH

www.enviroblinds.co.uk

T.+44(0)1273 689151 | F.+44(0)1273 604319