

NEW LU MULTI-TRACK MATTING

Non Section 12



LUL APPROVED

Data Sheet

Application

This product has been specifically designed to be used in all applications where traffic enters a station from more than one direction. It is already in situ and has been specified for numerous stations.

Efficiency

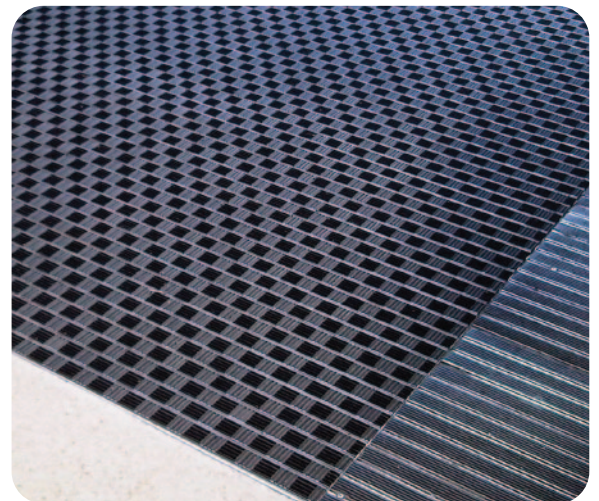
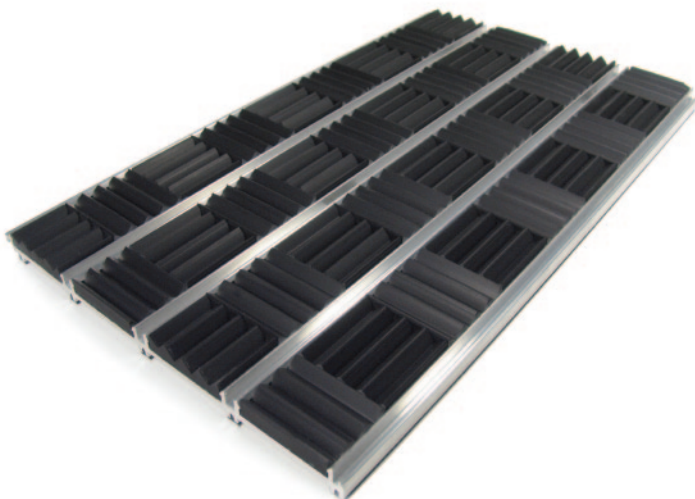
Unlike any other matting before it, the innovative design allows every footfall taken on the mat maximum grip – NO MATTER WHICH DIRECTION THE PERSON IS WALKING. Due to the innovative channel sections, debris is collected below the surface of the mat and the open channel with drainage holes provide an excellent drainage facility; this results in less dirt and moisture on the top of the mat that can be tracked into the station by foot traffic.

Sustainability

The aluminium is not only efficient but is constructed from over 90% recycled material, making it a market leader in sustainability. By 2020 all aluminium used in the production of the New LU matting will be 100% recycled.

Maintenance

The New LU matting can be maintained as part of a normal cleaning regime without having to be removed from situ which can cause damage and warping to matting. The infill strips are replaceable; this can be carried out on site by in house maintenance, again without removing the mat.



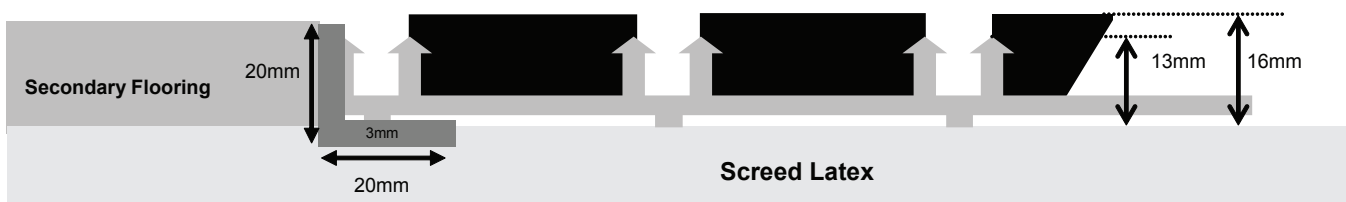
NBS: New LU Debris Multi-track Matting

N10 General Fixtures/Furnishings/Equipment 300 Entrance matting

Solid aluminium extrusion entrance matting system with a multi-directional ribbed rubber insert.

- a) Manufacturer: Entrance Matting Systems Limited
- b) Reference: EMS New LU Multi-track matting, standard profile
- c) Frame: 20mm x 20mm x 3mm aluminium section (to suit nominal 20mm recess).
Fixed angle/mitred
- d) Grade: Extra Heavy Contract
- e) Infills: EMS multi directional rubber, colour Black
- f) Overall dimensions shall be as indicated on the Design Drawings
- g) Overall height: Nominal 16mm (to suit nominal 17mm recess)

Standard Profile



Technical Specification

| | |
|--------------------------------|---|
| Infill Composition | Heavy Grade contact profiled rubber |
| Extrusion Composition | Over 90% recycled aluminium. |
| Infill Thickness | 7.5mm |
| Max. available extrusion width | 4000mm |
| Total Height | 16mm |
| Total Weight (Kg/Sqm) | 14 |
| Infill width | 30mm |
| Debris Channel width | 4mm |
| Application | Underground stations. Wheeled traffic. |
| Flammability | Hot nut metal test approved |

Further technical information is available on request