



**eltherington**  
architectural solutions  
Innovation | Performance | Facades

# case study

specialist fabrication  
SF1



**Sector**  
Residential

**Project**  
SJL House, London

**Project value**  
£150,000

**Architect**  
Sidell Gibson

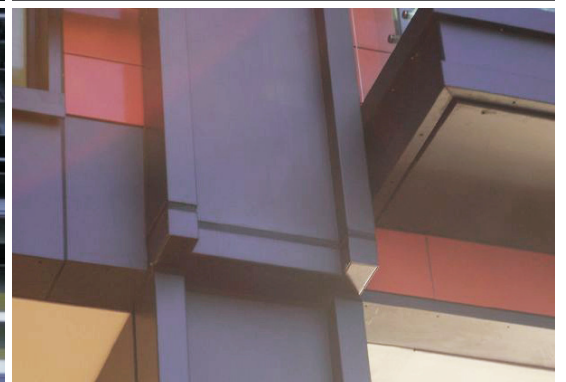
**Material and finish**  
Blue grey anodised aluminium  
mock / feature beams

**Solution**

- Fabricated aluminium corner sections inclusive of internal jointer / shadow gap at joints.
- Folded feature panels give the impression of an old fashioned I beam.
- Anodised BS3987 25-25 microns - J57S grade material anodised at United anodisers.

**Benefits**

- Base material was produced from one batch assisting in shade consistency across the complete façade.
- Bespoke fabrications to ensure the traditional appearance of the building was retained.
- Secret fix system was used for the overlaid elements to ensure aesthetic integrity of the façade.



# Specialist Fabrication

## Materials and finishes

| Aluminium                 | Finish               |
|---------------------------|----------------------|
| Polyester powder coated   | Standards            |
| Polyester powder coated   | Metallic & textured  |
| Pre-coat                  | Standards            |
| Pre-coat                  | Metallic & Chameleon |
| Anodised                  | Natural              |
| Anodised                  | Anolok bronze        |
| Anodised                  | Anolok black         |
| Anodised                  | Anolok Blue Grey     |
| Anodised                  | Anolok gold          |
| Natural plain             | Mill finish          |
| Aluminium composite (ACM) | Reynobond            |
| Aluminium                 | Rimex                |
| Various                   | Perforated           |
| Various                   | Slotted              |

| Stainless Steel | Finish              |
|-----------------|---------------------|
| 304 / 14301     | Satin polished      |
| 316 / 14401     | Satin polished      |
| Industrial      | Shot peened/blasted |
| Unique          | Circular polish     |
| Natural plain   | 2B mill finish      |
| Pattern         | Rimex               |
| Industrial      | Granex              |
| Arcelor Mittal  | Uginox TT           |
| Various         | Perforated          |
| Various         | Slotted             |

| Steel                      | Finish          |
|----------------------------|-----------------|
| Galvanised                 | PPC             |
| Galvanised natural plain   | Mill finish     |
| Zinc                       | PPC             |
| Zinc natural plain         | Mill finish     |
| Pre-coat                   | Dobel Plastisol |
| Mild steel                 | PPC             |
| Corten steel natural plain | Mill finish     |
| Various                    | Perforated      |
| Various                    | Slotted         |

| Other                       | Finish      |
|-----------------------------|-------------|
| Rimex Colourtex             | Various     |
| Rimex S/S Vortex            | Various     |
| Copper natural plain        | Mill finish |
| Aluminium pre-coat Reynolux | Various     |
| Zinc material               | Mill finish |
| Aluminium pre-coat zinc     | Grey        |
| Aluminium pre-coat FF2      | PVDF coated |
| Brass                       | Polished    |

### Sustainability and the Green Guide

Eltherington is committed to sustainable manufacturing leadership in all areas of its business, including recycling, reduction of waste and saving energy.

Eltherington specialist fabrications can achieve an 'A' rating as defined in the BRE Green Guide to Specification. Due to their lightweight nature, framed structures generally score better than their masonry counterparts. A-ratings can be achieved using all conventional cladding materials from Eltherington.

### Showroom

Eltherington has a large showroom at our manufacturing site in Hull, East Yorkshire, showcasing all of our architectural solutions. To arrange a visit, please call us on 01482 320336.

### Design assistance

Our team can assist you in all aspects of regulatory compliance covering fire safety, condensation and ventilation.

We can manufacture specialist fabrications to your exact designs. We offer a full installer support programme.

### Our commitment

Eltherington is at the forefront of innovation and performance in the specialist fabrication sector. This gives customers confidence in our products, allowing them to realise their vision of creating buildings where people want to live and work.



Eltherington rainscreen cladding solutions have been independently tested and accredited to the specific requirements of CWCT.

The Centre for Window and Cladding Technology (CWCT) is the leading provider of information in the area of building envelopes and glazing. The CWCT establishes industry standards and provides guidance to its members.



Full NBS specifications are available for all Eltherington rainscreen cladding solutions. We have an experienced technical team that can assist you in putting together designs and detailed specifications.



Eltherington offers RIBA-assessed, high-quality CPD seminars at your office or regional centres around the UK. Please contact our customer services department for more information.

## Other solutions available from Eltherington:



Column casings



Roofline



Rainscreen cladding



Internal cladding



Modular / off-site



**eltherington**  
architectural solutions  
Innovation | Performance | Facades



Eltherington Aluminium Ltd, Dansom Lane South, Hull, East Yorkshire, HU8 7LA  
T: 01482 320336 F: 01482 329956 E: [info@Eltherington.co.uk](mailto:info@Eltherington.co.uk)