

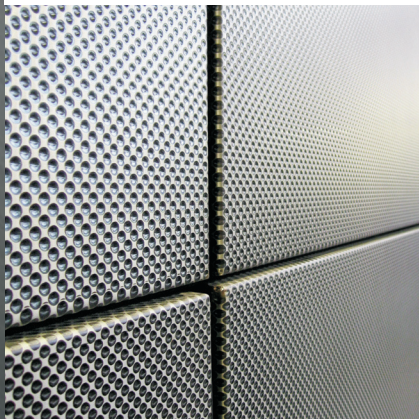
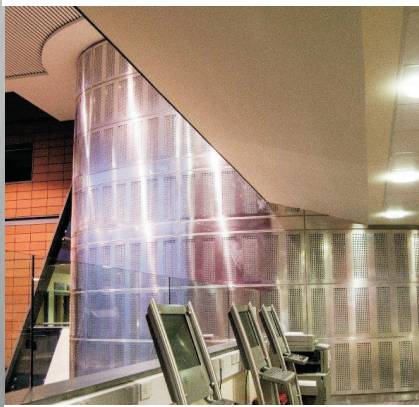


CI/SfB L519 + L529
| Xh4 |

eltherington
architectural solutions
Innovation | Performance | Facades

Internal cladding

IC1



Specification guide

Specification guide

Internal cladding

The design capabilities and visual appeal of internal cladding has long been understood. Here at Eltherington we have developed a carrier and panel system that ensures your project is able to access these benefits.

With a wide choice of materials ranging from aluminium, steel, zinc and copper through to Rimex, the design possibilities are endless.

Internal cladding is a dry-fix construction method that satisfies the requirements of modern methods of construction. It is lightweight, durable and creates buildings where people want to work, visit and live.

Innovation and service

Eltherington has been providing innovative architectural solutions to the construction industry for over 50 years. Our 6 acre, state of the art production facility allows us to take on board specialist architectural metal work projects of any scale. We fabricate a wide range of external architectural systems including Bullnoses, Fascias and Soffits, Guttering, Rainscreen Cladding and Column Casings.



CPD

Eltherington offer RIBA accredited CPD seminars that can be presented to you or your team on request.

Technical support

Whatever product you are looking to specify, our skilled technical team will be able to provide you with support and advice at all stages of the project. We offer a full suite of 2D and 3D design services.

Compliance

Our UK-based manufacturing facilities work to exacting tolerances to help you meet Building Regulation requirements. We are proud to be accredited to:
BS EN ISO 9001:2008 - Quality
BS EN ISO 14001:2004 - Environmental
OHSAS 18001:2007 - Health & Safety

Benefits

- Wide range of materials, finishes and colours
- Carrier and panel system for ease of installation
- Low maintenance
- Panel widths available up to 4m
- Market-leading Hilti bracket system
- Does not support combustion and can meet the requirements laid out in BS476 Part 6 & 7: Class 0 non-combustible. BS EN 13501-1. See back page for Euroclass fire classification.



Parapets



Rainscreen cladding



Canopies



Specialist fabrications



Fascia and soffits



Roofline

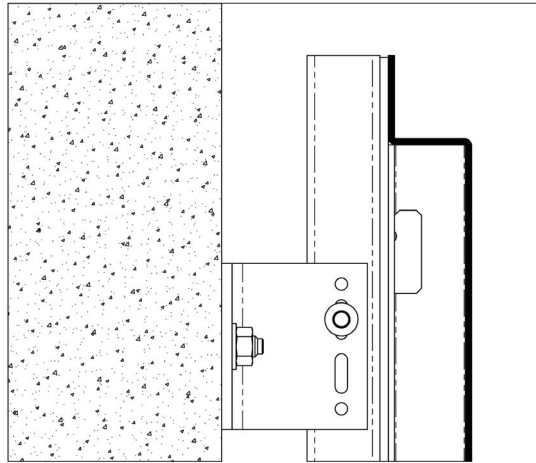


Column casings

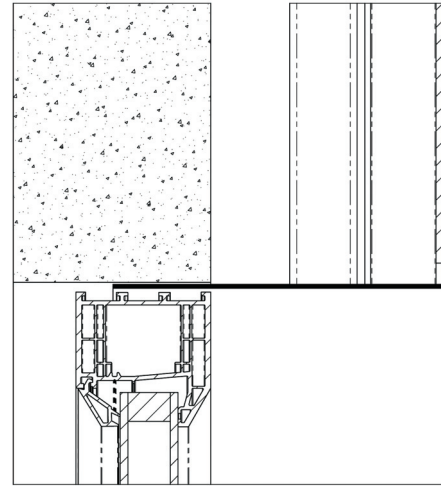
Specification guide

visit our website to download info
www.eltherington.co.uk

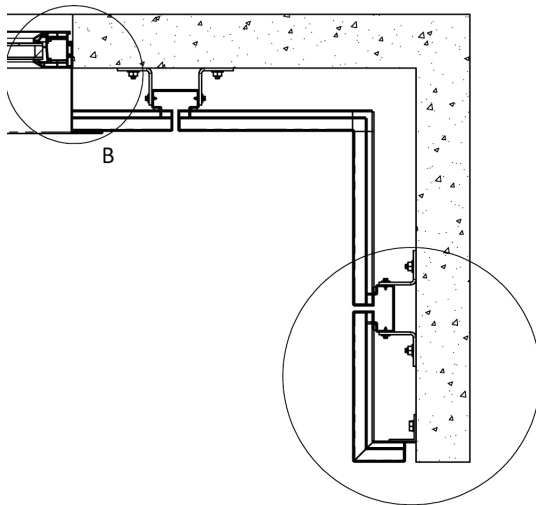
Top Detail



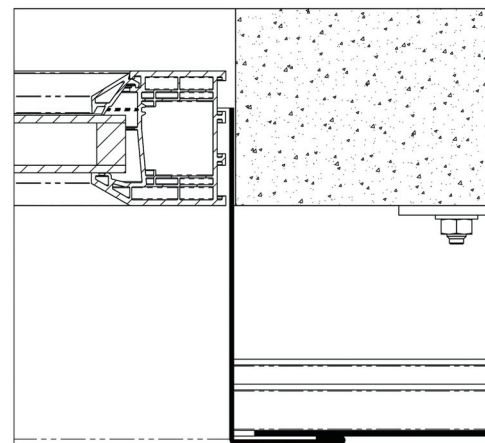
Window Head Detail



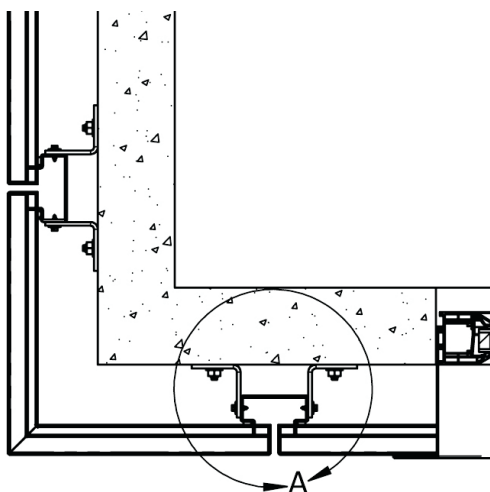
Internal Corner Detail



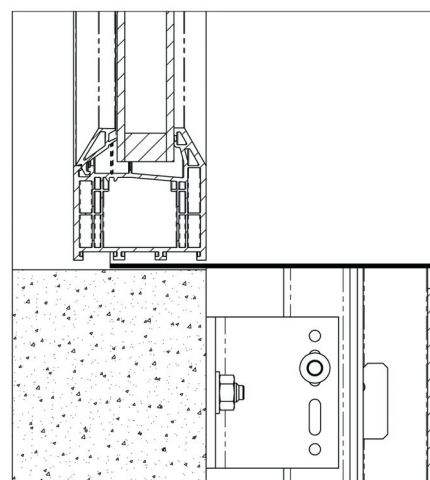
Window Jamb Detail



External Corner Detail

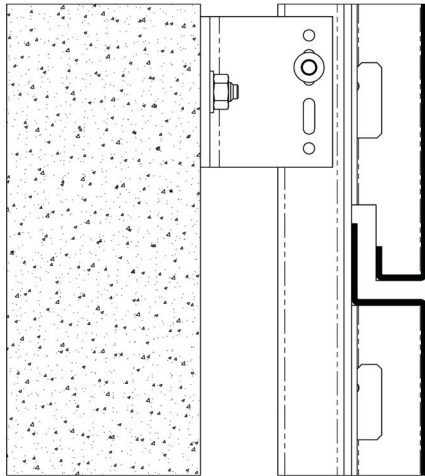


Window Cill Detail

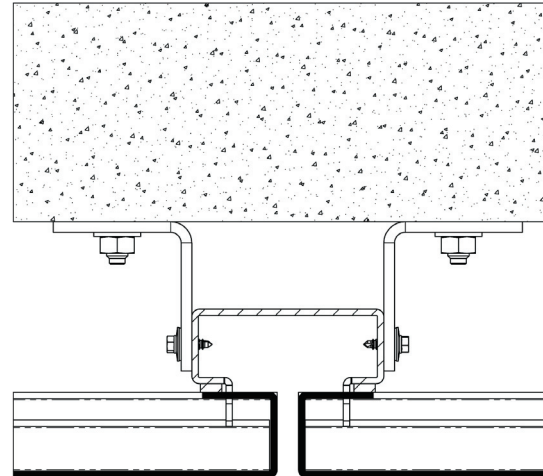


Specification guide

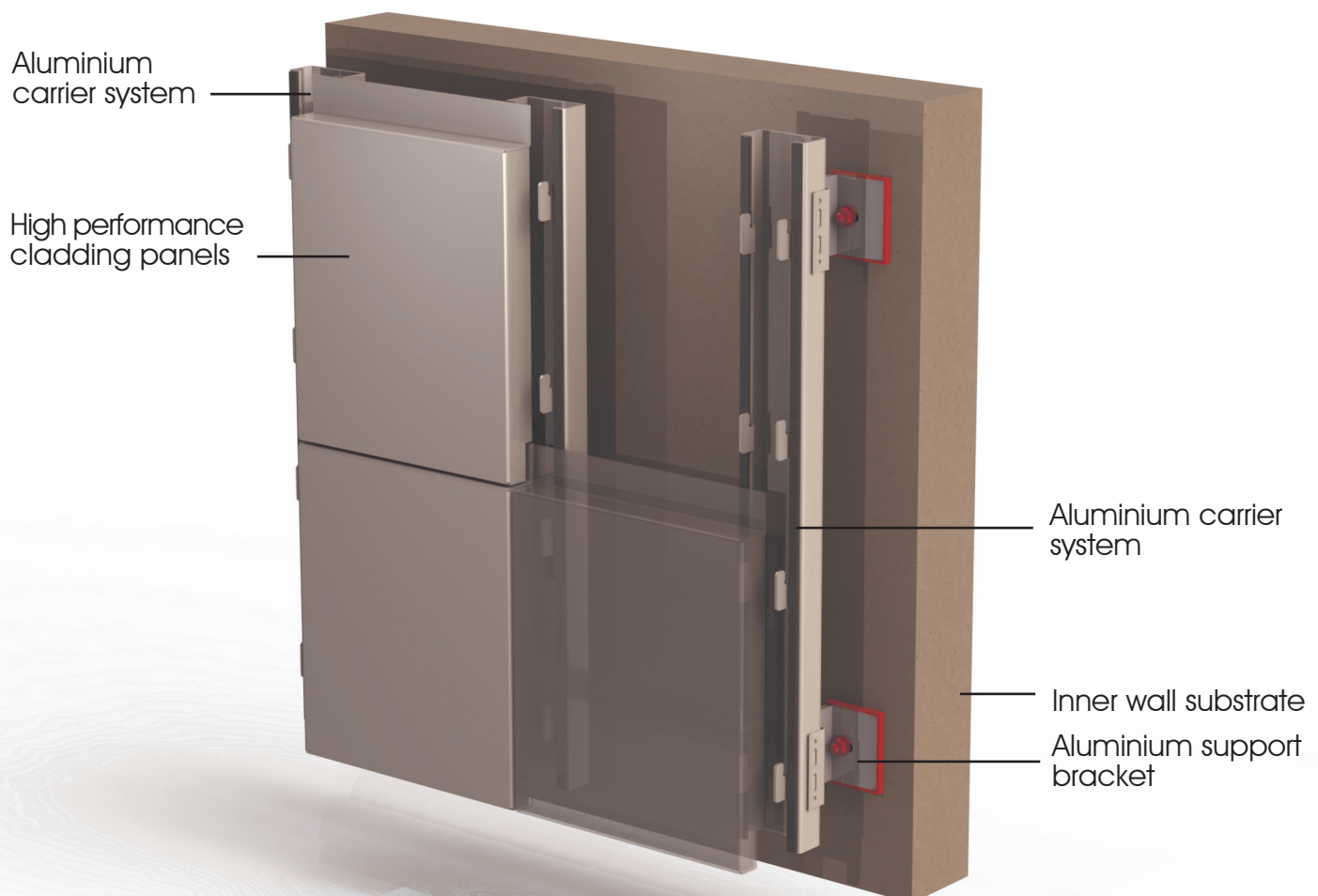
Vertical Joint Detail



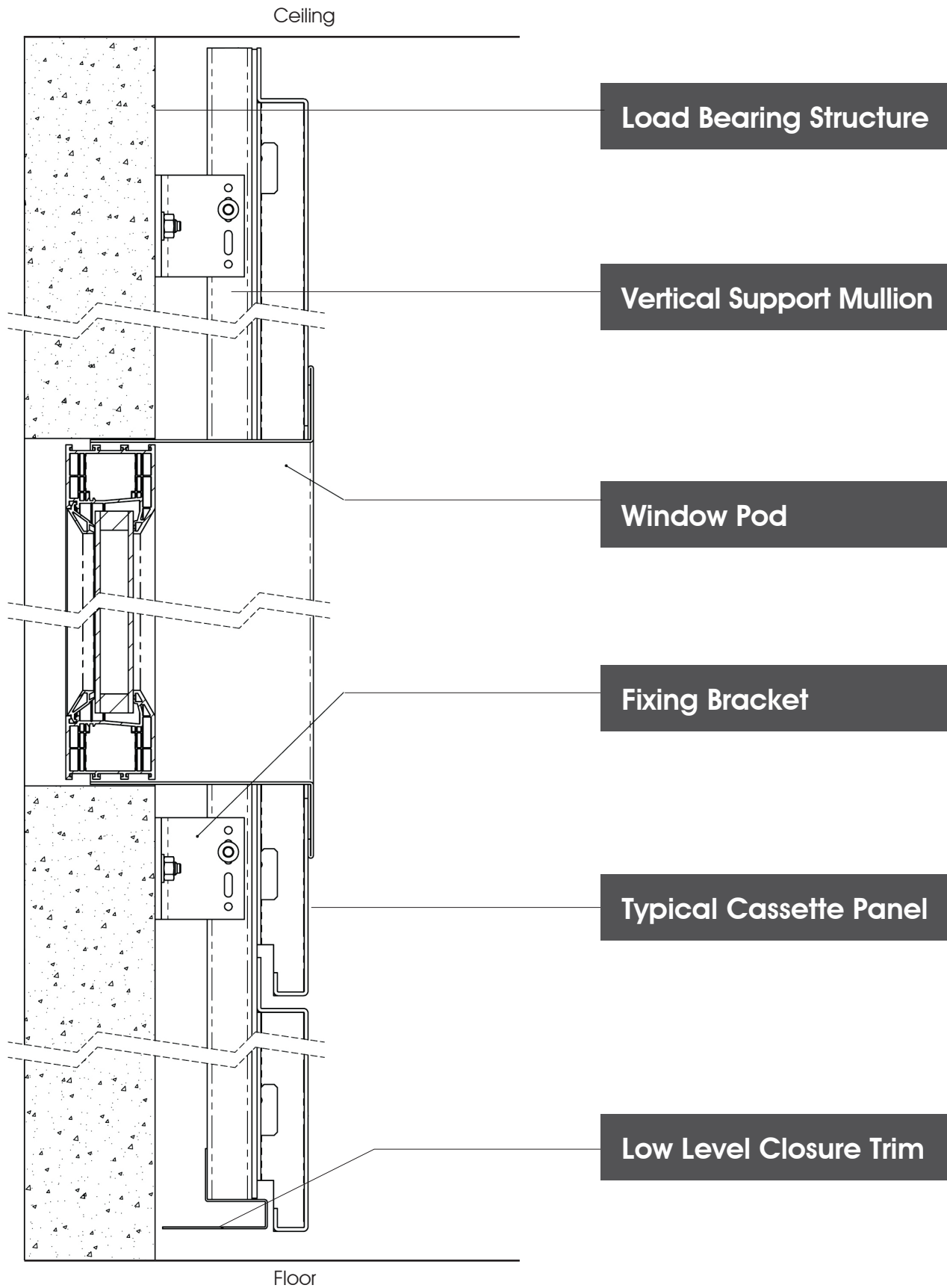
Horizontal Joint Detail



Typical Installation



Specification guide



Eltherington's partnership with Hilti provides customers with a comprehensive carrier and panel system that meets all performance and regulatory requirements.



Internal cladding

Materials and finishes

Aluminium	Finish	Fire Rating*
Polyester powder coated	Standards	(A1)
Polyester powder coated	Metallic & textured	(A1)
Pre-coat Reynolux	Standards	(A1)
Pre-coat Reynolux	Metallic & Chameleon	(A1)
Aluminium composite (ACM)	Reynobond	(FR & A2)
Anodised	Natural	(A1)
Anodised	Anolok bronze	(A1)
Anodised	Anolok black	(A1)
Anodised	Anolok Blue Grey	(A1)
Anodised	Anolok gold	(A1)
Natural plain	Mill finish	(A1)
Aluminium	Rimex	(A1)
Various	Perforated & Slotted	

Stainless Steel	Finish	Fire Rating*
304 / 14301	Satin polished	(A1)
316 / 14401	Satin polished	(A1)
Industrial	Shot peened/blasted	(A1)
Unique	Circular polish	(A1)
Natural plain	2B mill finish	(A1)
Pattern	Rimex	(A1)
Industrial	Granex	(A1)
Arcelor Mittal	Uginox TT	(A1)
Various	Perforated & Slotted	

Steel	Finish	Fire Rating*
Galvanised	PPC	(A1)
Galvanised natural plain	Mill finish	(A1)
Zinc	PPC	(A1)
Zinc natural plain	Mill finish	(A1)
Pre-coat	Dobel Plastisol	(A1)
Mild steel	PPC	(A1)
Corten steel natural plain	Mill finish	(A1)
Various	Perforated & Slotted	

Other	Finish	Fire Rating*
Rimex Colourtex & Vortex	Various	(A1)
Brass	Polished	(A1)
Copper natural plain	Mill finish	(A1)
Zinc	Various	(A1)
Formica EDF	Various	(B)
Formica EDS	Various	(D)
Aluminium pre-coat FF2	PVDF coated	(A1)

*EN 13501-1 ratings are for reference only.

Sustainability and the Green Guide

Eltherington is committed to sustainable manufacturing leadership in all areas of its business, including recycling, reduction of waste and saving energy.

Eltherington internal cladding can achieve an 'A' rating as defined in the BRE Green Guide to Specification. Due to their lightweight nature, framed structures generally score better than their masonry counterparts. A-ratings can be achieved using all conventional cladding materials from Eltherington.

Showroom

Eltherington has a large showroom at our manufacturing site in Hull, East Yorkshire, showcasing all of our architectural solutions. To arrange a visit, please call us on 01482 320336.

Design assistance

Our team can assist you in all aspects of regulatory compliance covering fire safety, condensation and ventilation.

Along with our standard range of internal cladding we can manufacture to your exact designs. We offer a full installer support programme.

Our commitment

Eltherington is at the forefront of innovation and performance in the internal cladding sector. This gives customers confidence in our products, allowing them to realise their vision of creating buildings where people want to live and work.



Eltherington rainscreen cladding solutions have been independently tested and accredited to the specific requirements of CWCT.

The Centre for Window and Cladding Technology (CWCT) is the leading provider of information in the area of building envelopes and glazing. The CWCT establishes industry standards and provides guidance to its members.



Full NBS specifications are available for all Eltherington rainscreen cladding solutions. We have an experienced technical team that can assist you in putting together designs and detailed specifications.



Eltherington offers RIBA-assessed, high-quality CPD seminars at your office or regional centres around the UK. Please contact our customer services department for more information.

Other solutions available from Eltherington:



Column casings



Roofline



Rainscreen cladding



Modular / off-site



Specialist fabrications



eltherington
architectural solutions
Innovation | Performance | Facades



Eltherington Aluminium Ltd, Eltherington Business Park, 1305 Hedon Road, Hull HU9 5QD
T: 01482 320336 F: 01482 329956 E: info@eltherington.co.uk