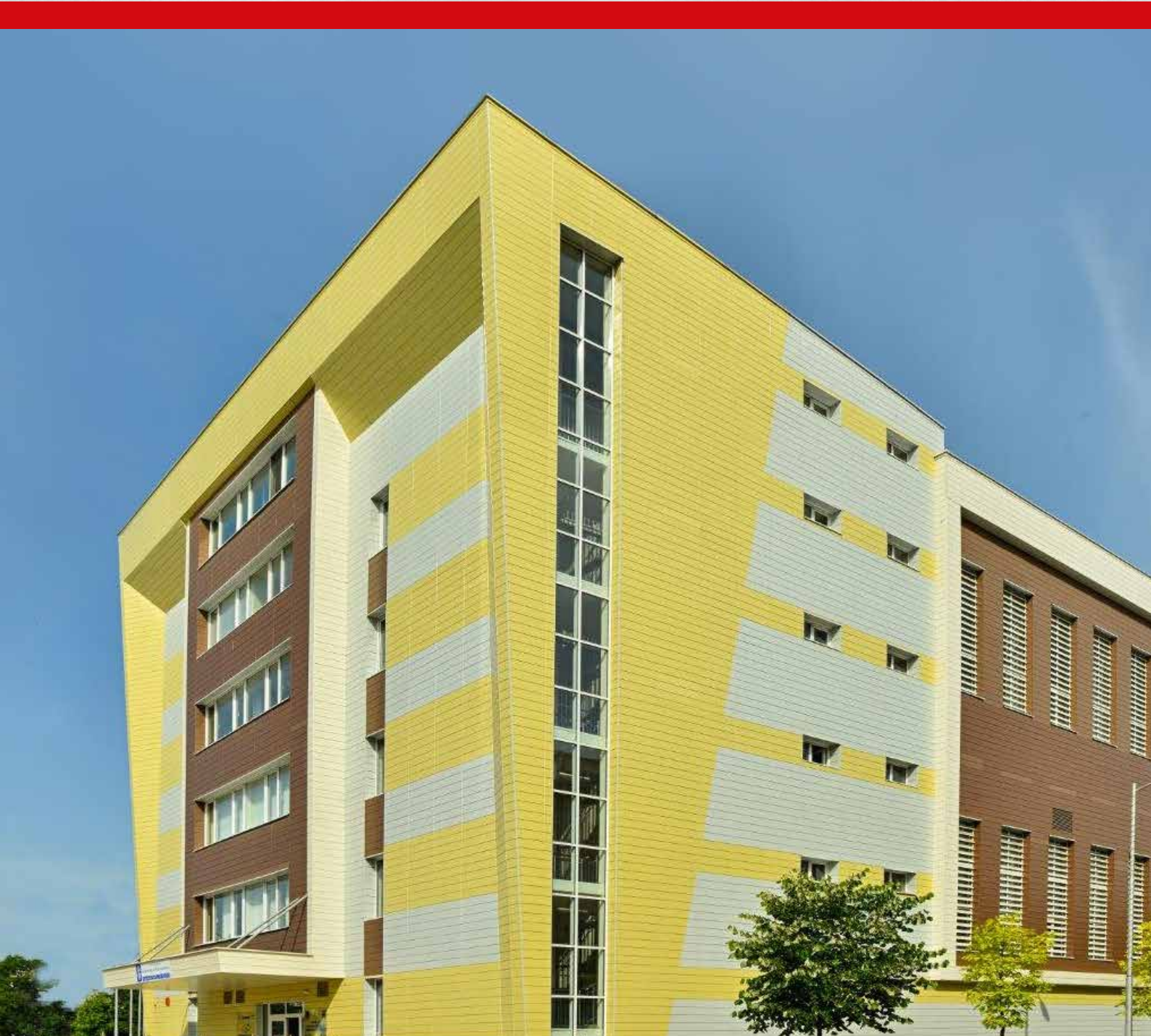


Rainscreen Cladding

Extruded Plank System



eltherington
architectural solutions



Specification guide

www.eltherington.co.uk

EPS - Extruded Plank System

About Eltherington Architectural Solutions

Eltherington architectural has been manufacturing façade systems for over 50 years.

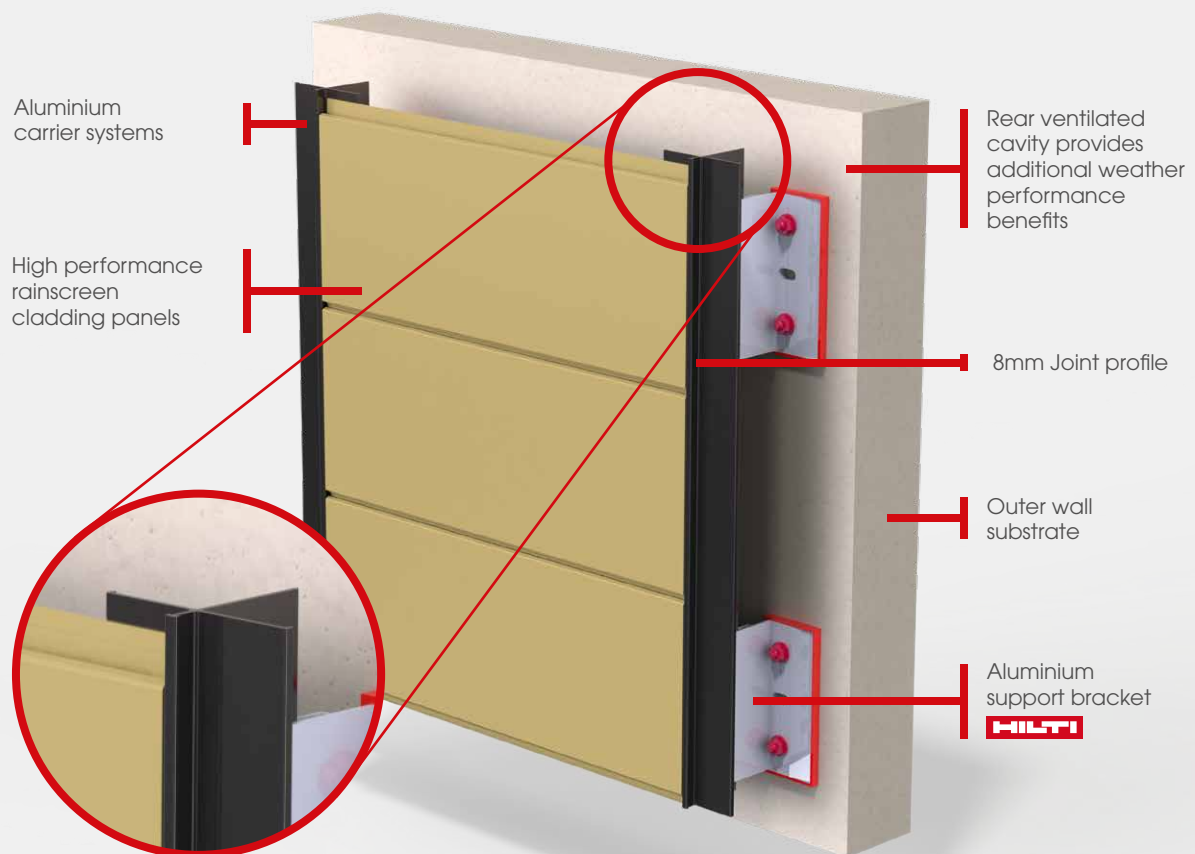
All our rainscreen systems have been independently tested and accredited to the specific requirements of CWCT and come in an unrivalled choice of materials, colours and finishes to help you bring your design to life.

Our state of the art production facility allows us to take on board specialist architectural metal work projects of any scale. We fabricate a wide range of external architectural systems including rainscreen cladding, roofline products, column casings, perforated panels and any bespoke fabrication.

Specification

- Material - Aluminium
- Finish - PPC, Anodised
- Thickness - 2mm
- Face Height - 210mm only
- Face length - 6010mm max
- Horizontal joint - 8mm
- Vertical joint - Open or 8mm T profile
- Fixings - Self drill mechanical fix
- Fixing centres - 750mm max
- Install method - Bottom > up
- CWCT tested with Hilti-Eurofox

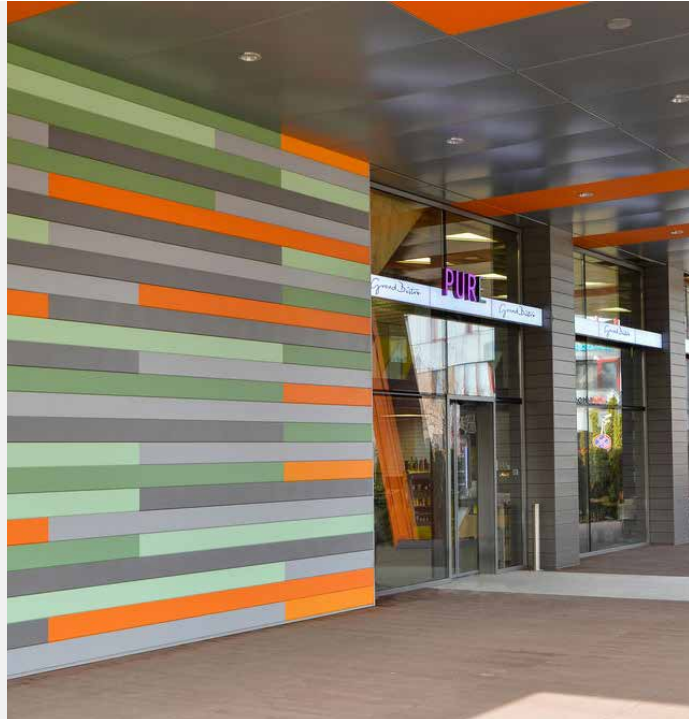
Typical Installation



The Eltherington EPS uses 2mm extruded aluminium that allows for a quick, simple and secret fix install. The standard plank returns along with our extruded vertical profile ensures an accurate 8mm vertical and horizontal joint gap.

The EPS lends itself to use in all areas including ground floor vulnerable areas due to the impact resistance of extruded aluminium.

The system is also a bottom to top install. Starting at the bottom of the elevation each plank is fed into the male/female plank return below it and secured by mechanical fixings through site drilled slots into our extruded Hilti-Eurofox subframe.



Burgas High School

- 2mm aluminium
- Bespoke subframe
- PPC finish
- 4500m²
- Architect - Todorov Architects



Rainscreen Fire Ratings

Definition	Product Name	Material	Manufacturer
A1 NON-COMBUSTIBLE	CoreClad A1	Aluminium	Eltherington
	Anodised	Aluminium	Eltherington
	Rimex various	Steel	Rimex
	Corten	Steel	Corten
A2	PPC	Aluminium	Eltherington
	Vitrabond A2	ACM	Valcan
	Alucobond A2	ACM	Alucobond
	Reynobond A2	ACM	Arconic
B	VIVIX FR	High pressure laminate	Formica
D	VIVIX std	High pressure laminate	Formica

British Standard (BS)	Euro Class Transferal
Non-combustible	A1
Limited Combustibility	A2-s3,d2,or better
Class 0	B-s3,d2,or better
Class 1	C-s3,d2,or better
Class 3	D-s3,d2,or better

Table of the leading cladding brands and their fire classification result ranging from A1 to D in accordance with European Standards EN-13501-1.

The Complete Rainscreen Solution by **HILTI** - Eltherington

Design →	Measure →	Brackets →	Fixing brackets →	Mounting insulation →	Firestop →	Profiles & alignment →	Rainscreen cladding →

Other CWCT tested rainscreen cladding systems and designs:

- | | |
|--------------------------------------|----------------------------------|
| TFS1 Through Fix System | EPS Extruded Plank System |
| SFS1 Secret Fix System | CS Castellation System |
| CPS Clip Plank System | P1 Perforated |
| IPS Interlocking Plank System | E1 Embossed |



Contact Us

T: 01482 320336
F: 01482 329956
E: info@eltherington.co.uk
A: Eltherington Group Ltd,
 1305 Hedon Road,
 Hull, East Yorkshire, HU9 5QD

www.eltherington.co.uk

