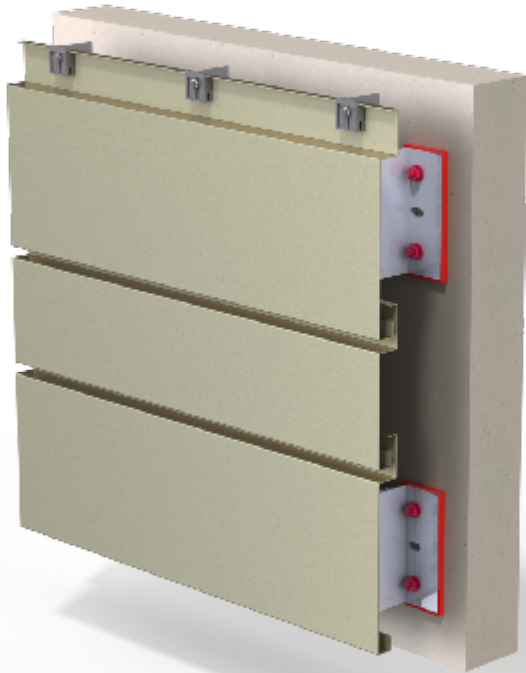


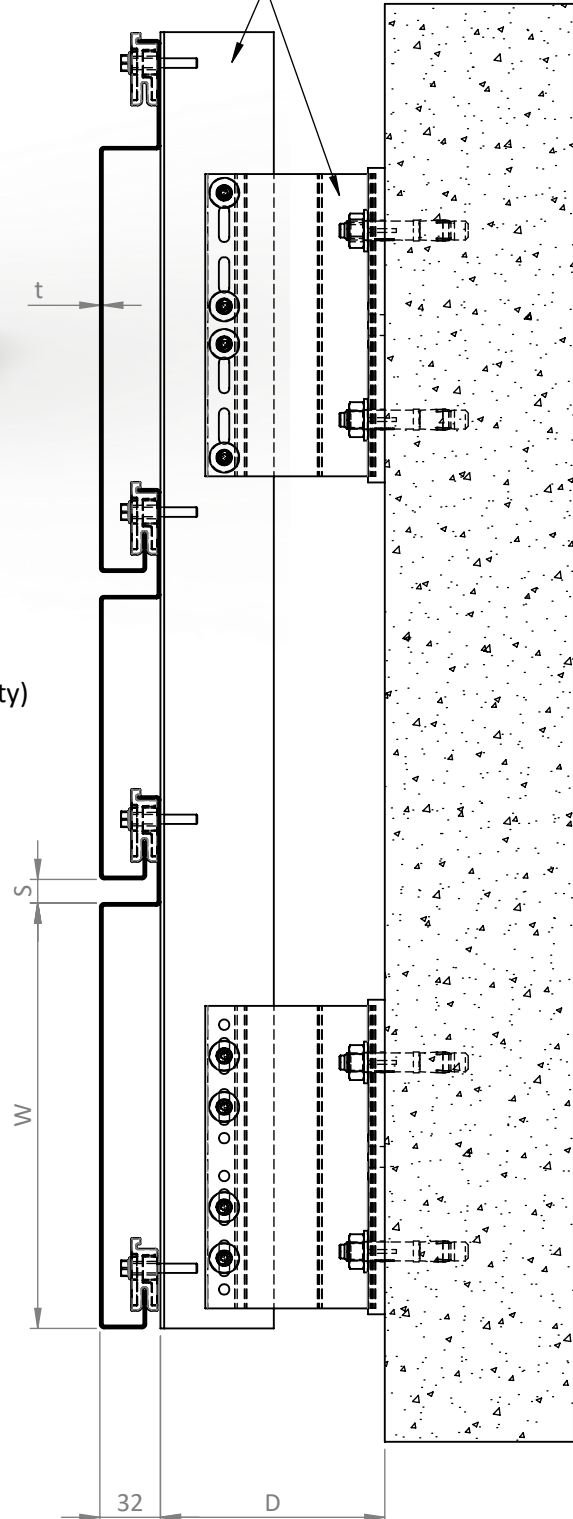
Product : **CPS Ventilated Rainscreen**
Description : Formed Metal Plank System



eltherington
architectural solutions
Innovation | Performance | Facades



Facade Mounting System
HILTI 'helping hand' brackets
with 'T' or 'L' rails (Aluminium)



Material - Aluminium, Steel
Finish - PPC, Pre-Paint, Anodised, Corten, Rimex
Plank Lengths 6400mm max (dependant material availability)
Vertical Joint - Open, closed return or Butt strap
Clip fixings - Self Drill mechanical fix
Fixing centres - 750mm max
Install method - Bottom up
CWCT tested with Hilti-Eurofox

't' = 1.0, 1.2, 1.5 & 2.0mm

'D' = 65 to 295mm

'S' = 10 to 20mm

'W' = 125 to 450mm

Basic cut blank sizing = 'S'+ 'W'+127mm

Last revision date : 09/05/18