

Rainscreen Cladding Castellation System



eltherington
architectural solutions



Specification guide

www.eltherington.co.uk

C1 - Castellation

About Eltherington Architectural Solutions

Eltherington architectural has been manufacturing façade systems for over 50 years.

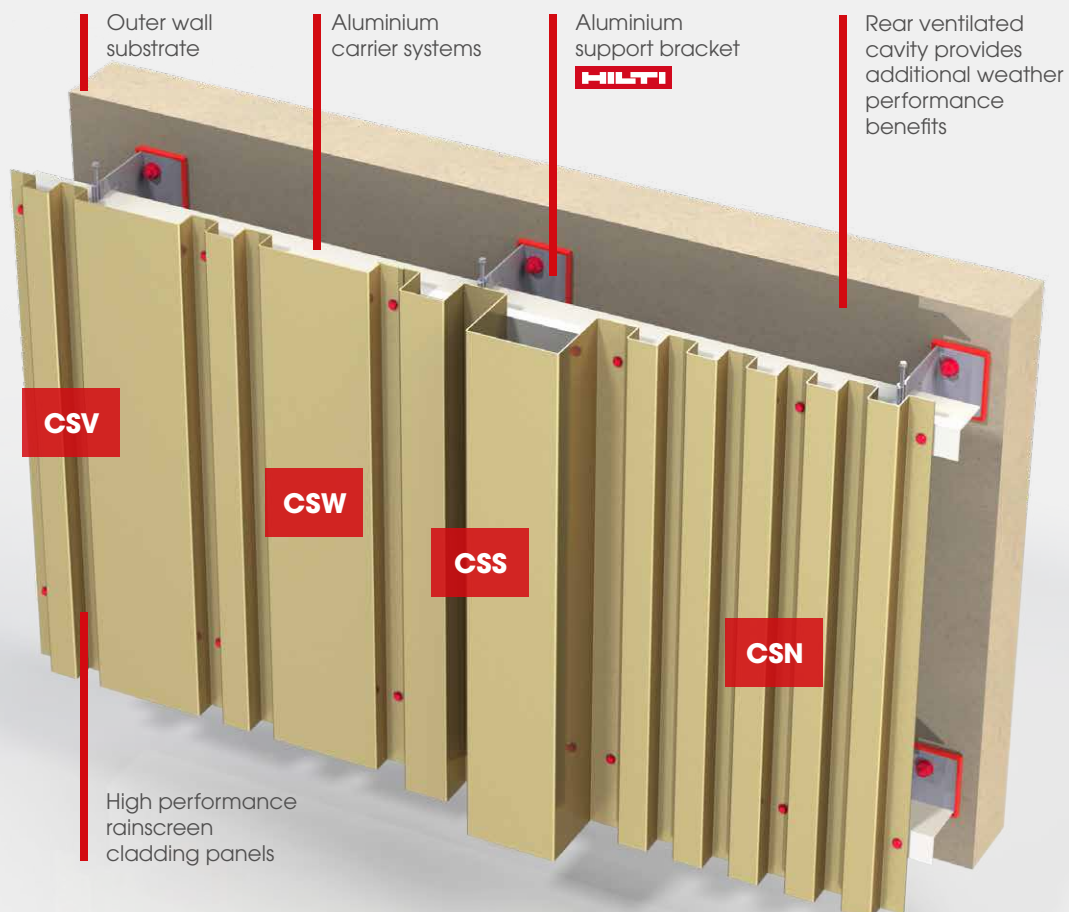
All our rainscreen systems have been independently tested and accredited to the specific requirements of CWCT and come in an unrivalled choice of materials, colours and finishes to help you bring your design to life.

Our state of the art production facility allows us to take on board specialist architectural metal work projects of any scale. We fabricate a wide range of external architectural systems including rainscreen cladding, roofline products, column casings, perforated panels and any bespoke fabrication.

Specification

- Finish - PPC, Pre-Paint, Anodised, Corten, Rimex
- Plank Lengths 6400mm max (dependant material availability)
Horizontal Joint - Open or Butt strap
- Thickness - Max of 2mm
- Fixing - Self Drill mechanical fix
- Fixing centres - 300mm max
- Install method - Overlap right over left or vice versa
- CWCT tested with Hilti-Eurofox

Typical Installation





CSN Castellation System Narrow



CSW Castellation System Wide



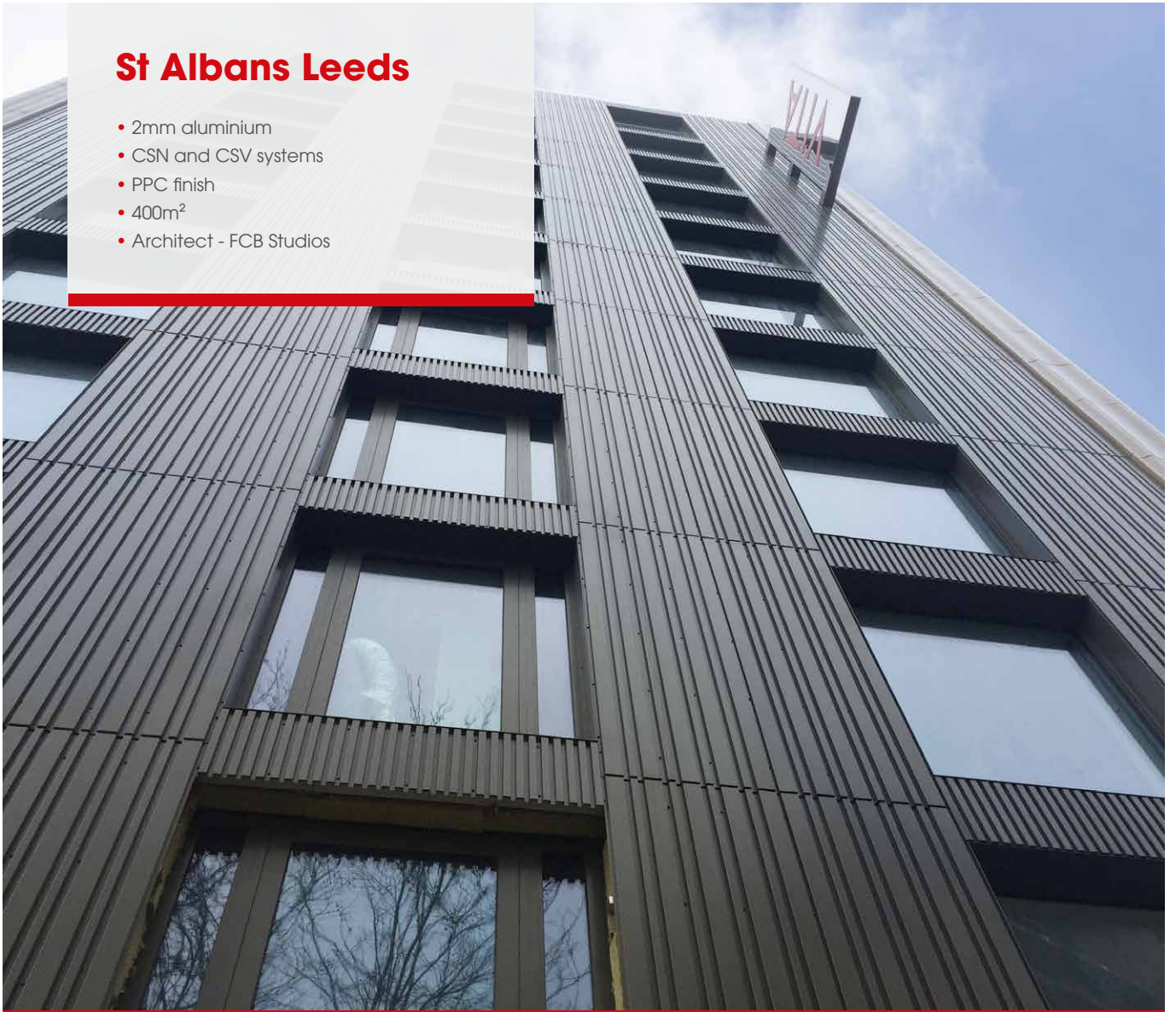
CSV Castellation System Varied



CSS Castellation System Step

St Albans Leeds

- 2mm aluminium
- CSN and CSV systems
- PPC finish
- 400m²
- Architect - FCB Studios



Rainscreen Fire Ratings

Definition	Product Name	Material	Manufacturer
A1 NON-COMBUSTIBLE	CoreClad A1	Aluminium	Eltherington
	Anodised	Aluminium	Eltherington
	Rimex various	Steel	Rimex
	Corten	Steel	Corten
A2	PPC	Aluminium	Eltherington
	Vitrabond A2	ACM	Valcan
	Alucobond A2	ACM	Alucobond
	Reynobond A2	ACM	Arconic
B	VIVIX FR	High pressure laminate	Formica
D	VIVIX std	High pressure laminate	Formica

British Standard (BS)	Euro Class Transferal
Non-combustible	A1
Limited Combustibility	A2-s3,d2,or better
Class 0	B-s3,d2,or better
Class 1	C-s3,d2,or better
Class 3	D-s3,d2,or better

Table of the leading cladding brands and their fire classification result ranging from A1 to D in accordance with European Standards EN-13501-1.

The Complete Rainscreen Solution by **HILTI** - Eltherington

Design →	Measure →	Brackets →	Fixing brackets →	Mounting insulation →	Firestop →	Profiles & alignment →	Rainscreen cladding →

Alternative design options by Eltherington Architectural:

CS Castellation System



3D 3D Domed



Contact Us

T: 01482 320336

F: 01482 329956

E: info@eltherington.co.uk

A: Eltherington Group Ltd,
1305 Hedon Road,
Hull, East Yorkshire, HU9 5QD

www.eltherington.co.uk



eltherington
architectural solutions