



eltherington
architectural solutions
Innovation | Performance | Facades

case study

column casings
CC1



Sector
Commercial

Project
Centurion House, London

Project value
£25,000

Architect
David Walker Architects

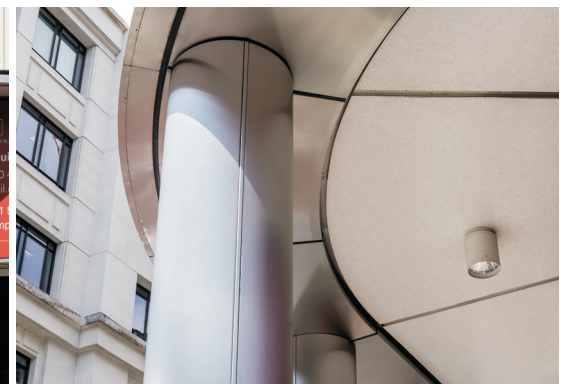
Material and finish
316 stainless steel, polished 320 grit.

Solution

- Facetted column casings to sloping walkway.
- Interface between curved soffit and column casing.

Benefits

- Clean cut intersections.
- High quality product achieved between Mace, SRL and Eltherington.



Column casings

Materials and finishes

Aluminium	Finish
Polyester powder coated	Standards
Polyester powder coated	Metallic & textured
Pre-coat	Standards
Pre-coat	Metallic & Chameleon
Anodised	Natural
Anodised	Anolok bronze
Anodised	Anolok black
Anodised	Anolok Blue Grey
Anodised	Anolok gold
Natural plain	Mill finish
Aluminium composite (ACM)	Reynobond
Aluminium	Rimex
Various	Perforated
Various	Slotted

Stainless Steel	Finish
304 / 14301	Satin polished
316 / 14401	Satin polished
Industrial	Shot peened/blasted
Unique	Circular polish
Natural plain	2B mill finish
Pattern	Rimex
Industrial	Granex
Arcelor Mittal	Uginox TT
Various	Perforated
Various	Slotted

Steel	Finish
Galvanised	PPC
Galvanised natural plain	Mill finish
Zinc	PPC
Zinc natural plain	Mill finish
Pre-coat	Dobel Plastisol
Mild steel	PPC
Corten steel natural plain	Mill finish
Various	Perforated
Various	Slotted

Other	Finish
Rimex Colourtex	Various
Rimex S/S Vortex	Various
Copper natural plain	Mill finish
Aluminium pre-coat Reynolux	Various
Zinc material	Mill finish
Aluminium pre-coat zinc	Grey
Aluminium pre-coat FF2	PVDF coated
Brass	Polished

Sustainability and the Green Guide

Eltherington is committed to sustainable manufacturing leadership in all areas of its business, including recycling, reduction of waste and saving energy.

Showroom

Eltherington has a large showroom at our manufacturing site in Hull, East Yorkshire, showcasing all of our architectural solutions. To arrange a visit, please call us on 01482 320336.

Design assistance

Our team can assist you in all aspects of regulatory compliance covering fire safety, condensation and ventilation.

Along with our standard range of column casings we can manufacture to your exact designs. We offer a full installer support programme.

Our commitment

Eltherington is at the forefront of innovation and performance in terms of building envelopes. This gives customers confidence in our products, allowing them to realise their vision of creating buildings where people want to live and work.



Eltherington facade systems solutions have been independently tested and accredited to the specific requirements of CWCT.

The Centre for Window and Cladding Technology (CWCT) is the leading provider of information in the area of building envelopes and glazing. The CWCT establishes industry standards and provides guidance to its members.

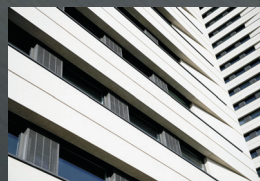


Full NBS specifications are available for all Eltherington rainscreen cladding solutions. We have an experienced technical team that can assist you in putting together designs and detailed specifications.



Eltherington offers RIBA-assessed, high-quality CPD seminars at your office or regional centres around the UK. Please contact our customer services department for more information.

Other solutions available from Eltherington:



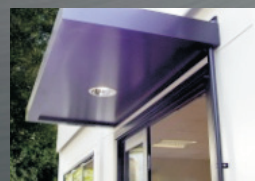
Rainscreen cladding



Roofline



Internal cladding



Modular / off-site



Specialist fabrications



eltherington
architectural solutions
Innovation | Performance | Facades



Eltherington Aluminium Ltd, Dansom Lane South, Hull, East Yorkshire, HU8 7LA
T: 01482 320336 F: 01482 329956 E: info@Eltherington.co.uk