

eltherington
architectural solutions
Innovation | Performance | Facades

**METAL
SHOWCASE**

www.eltherington.co.uk



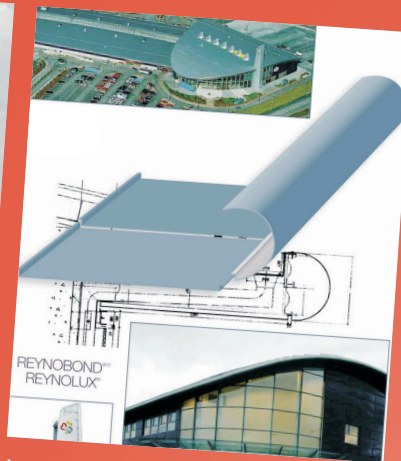
1960 Ted Eltherington, the founder of Eltherington Group, in 1960



Stockholding's first suite of aluminium extrusions



1990 Spandrel Panels - Canary Wharf



Roofline Export Products



UK Wide Transport Fleet

Contents

Rainscreen Cladding Through Fix	3
Rainscreen Cladding Secret Fix	4
Internal Cladding.....	5
Spandrel Panels	6
Column Casings	7
Perforated.....	8
Roofline	9
Specialist Fabrications	10
Modular/offsite.....	11

Eltherington Corporate History

Eltherington has been at the forefront of metal supply to the building industry for almost 60 years. During this time we have been a consistent and reliable supplier of bespoke aluminium, stainless steel, copper, steel and brass construction products. Our company has helped create visually outstanding architectural solutions for some of the most iconic buildings in the UK.

All Eltherington solutions are manufactured to the highest standards and designed to meet latest building performance requirements. The company is a member of the CWCT (Centre for Window and Cladding Technology), a leading provider of information on the design, specification and installation of building envelopes.

The Eltherington group of companies aim to continually improve and work to the highest UK industry standards. We are proud to hold the following accreditations:
BS EN ISO 9001:2008 Quality Management system
BS EN ISO 14001:2004 Environmental Management system
BS OHSAS 18001:2007 Occupational Health and Safety Management system

Founded by Ted Eltherington in the late 1950s the company remains a family run business on the same site in Hull, Yorkshire. Now employing close on 200 staff and occupying a 6 acre plot.



2015 International Projects



Through Fix

The superior design capabilities and contemporary appeal of rainscreen cladding have long been recognised.

Eltherington's through fix rainscreen cladding is a lightweight yet strong facade system that expresses this through minimised loadings on the building to give designers more scope for artistic expression.

Aluminium, steel, zinc, copper and Rimex, plus many others offered by Eltherington, provide endless design possibilities. A fusion of the same or different materials or finishes across the facade creates a juxtaposition of light, shade and texture.



Residential development in Kings Cross, London

Benefits

- Through fix for new build and refurbishment projects
- Wide range of materials, finishes and colours
- Carrier and panel system for ease of installation
- Low maintenance
- Panel widths available up to 4m
- Market-leading Hitti bracket system
- Independently tested and certified to meet CWCT specification for rainscreen cladding
- Does not support combustion and can meet the requirements laid out in BS476 Part 7. Class O non-combustible. BS EN 13501-1.





Haggerston Road Residential Development, London

Secret Fix

For a smooth, sheer facade, Eltherington's secret fix rainscreen cladding offers timeless appeal. It can be used to complement or accentuate other materials such as glass, sandstone and marble.

Secret fix rainscreen cladding creates a beautiful, smooth facade that accentuates sunlight and shadow in its purest form. The secret fix facade is uncluttered by visible fixings and as such represents the material and colour in its truest state.

Combine with Eltherington's spandrel panels and roofline for an integrated approach to the building facade.



Benefits

- Secret fix for a sheer, smooth facade
- Wide range of materials, finishes and colours
- Carrier and panel system for ease of installation
- Low maintenance
- Panel widths available up to 4m
- Market-leading Hilti bracket system
- Independently tested and certified to meet CWCT specification for rainscreen cladding
- Does not support combustion and can meet the requirements laid out in BS476 Part 7. Class O non-combustible. BS EN 13501-1.

Internal Cladding

Creating an inspiring aesthetic is effortless with Eltherington's internal cladding solutions.

Eltherington's bespoke manufacturing capabilities, honed over the years, allow unlimited artistic expression. Attention to detail, an extensive range of materials and design flair combine to create an internal cladding solution that has the ability to make the ordinary into something extra-ordinary.

Eltherington's internal cladding can be used with our spandrel panel products to maintain the same consistent look against any curtain walling system.



Edinburgh International Conference Centre

Benefits

- Wide range of materials, finishes and colours
- Carrier and panel system for ease of installation
- Low maintenance
- Panel widths available up to 4m
- Market-leading Hilti bracket system
- Does not support combustion and meets the requirements laid out in BS476, part 7, Class O, EN 13501-1.





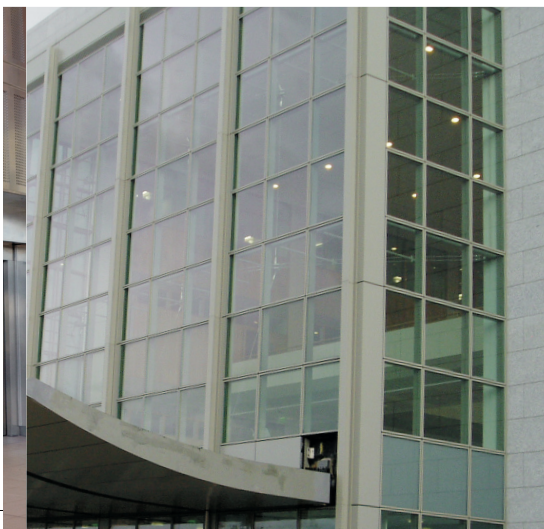
Spandrel Panels

When visual integrity of the facade or curtain walling system matters, Eltherington's spandrel panels provide a joined-up approach.

High performance spandrel panels are seamlessly interchangeable with glazing units in curtain walling systems. They are highly effective at hiding the edges of floor slabs, ceilings and other building elements that would detract from the overall aesthetics of the facade.

Spandrel panels are an integral part of creating an architectural design that will retain the visual impact of a curtain walling system.

Matthew Boulton College, Birmingham



Benefits

- High performance, thermally efficient solution for spanning floor slabs, ceilings, insulation and other building elements
- Retains overall visual integrity of curtain walling system
- Designed and manufactured to fully integrate with your chosen curtain walling system
- HCFC free foam insulated tray - insulation manufactured in accordance with BS EN 14001 & OHSAS BS EN 18001
- HCFC free mineral fibre insulated trays and non-combustible Class O
- Supplied with or without insulation.

Column Casings

Eltherington has highly developed capabilities in the area of design and manufacture of premium quality column casing systems.

From simple shapes, through to complex column casings, the company's precision manufacturing processes allow building designers to integrate these structural elements into the overall facade design.

Column casings are manufactured in an extensive range of materials, ensuring that they can complement or contrast with the main facade aesthetic. Eltherington column casings are non-combustible (Class O), durable, low maintenance and aesthetically pleasing.

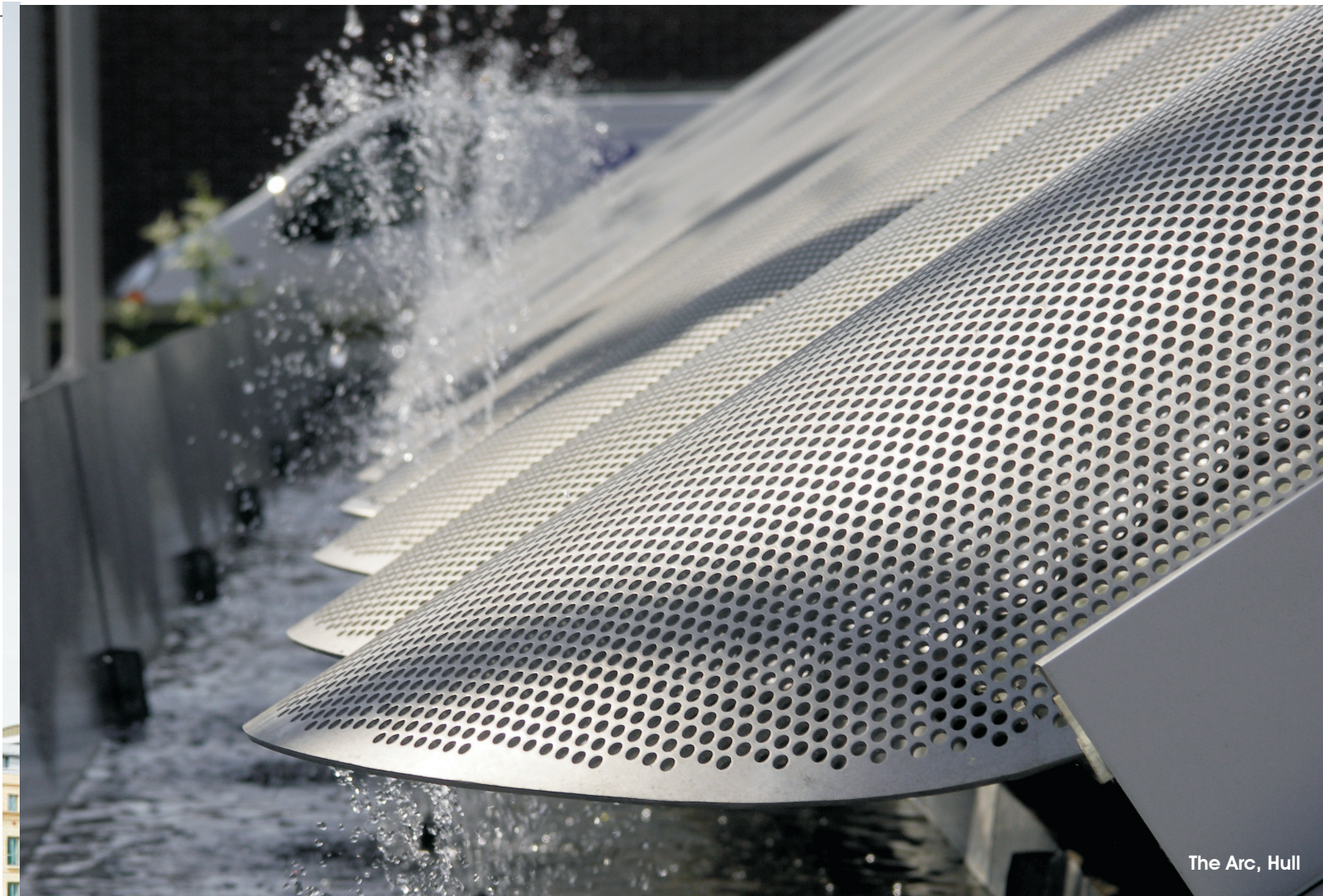


Edinburgh International Conference Centre

Benefits

- Wide range of materials
- Simple through to complex shapes
- Interior and exterior columns
- Hide mechanical and electrical services
- Quick and easy to install
- UK manufactured
- Does not support combustion and can meet the requirements laid out in BS476 Part 7. Class O non-combustible. BS EN 13501-1.





The Arc, Hull

Perforated

Eltherington's perforated solutions are an inspirational choice for cladding, soffit, column casings, brise soleil and solar shading.

Perforated products can be made to suit any open or free area requirements including a narrow or wide border, along with solid rows and columns. Fully bespoke capabilities and over 50 years of supplying perforated solutions make an unbeatable combination.

Perforated systems are an effective method of satisfying ventilation and solar shading requirements, or can be used purely for their aesthetics.



Benefits

- Standard and bespoke perforated panels
- Solutions for building facades, column casings and interior fit outs
- Wide range of materials, finishes and colours
- Carrier and panel system for ease of installation
- Low maintenance
- Panel widths available up to 4m
- Wide range of open and free area designs to suit your project
- Does not support combustion and can meet the requirements laid out in BS476 Part 7. Class O non-combustible. BS EN 13501-1.

Roofline

Eltherington is a specialist manufacturer of high quality aluminium roofline solutions including parapets, copings, bullnose, fascia, soffits, rainwater, guttering, barge boards and verge flashings.

The range is designed and supplied as a bespoke solution and offers the highest standards of performance, aesthetics and durability. Highly developed in-house manufacturing expertise means that roofline solutions can be supplied in almost any size, shape, material and colour.



Benefits

- Fully bespoke capabilities
- Integrate with facade and roofing elements
- Wide range of materials and finishes
- Low maintenance
- UK manufactured.





SJL House, London

Specialist Fabrications

Eltherington works closely with architects, specifiers and building designers to design and manufacture a wide range of specialist fabrications. In-house expertise and skills in this area enable the company to create a truly bespoke solution.

From mock beams and Juliet balconies, through to specialist fascia panels and ducting, the team at Eltherington has highly developed skills to meet all requirements.

Expertise and versatility combine to produce one of the widest ranges of specialist fabrications currently available in the UK.



Solutions

- Mock and feature beams
- Louvre frames
- Ventilation grills
- Juliet balconies
- Curved stainless steel fascias and soffits
- Curved aluminium cladding
- Transport door and floor panels
- Transport wall and roof pressings
- Lift shaft panels
- Air duct panels
- Fabricated aluminium extrusions.

Modular / Offsite

As a leading supplier to the portable and modular building industry for many decades, Eltherington is committed to offering consistently reliable, innovative products of the highest quality.

Eltherington's range of products include Roofline, such as bullnose fascia and soffit, rainwater and we also produce cladding. We have many internal products including floor plates and aluminium extrusions.



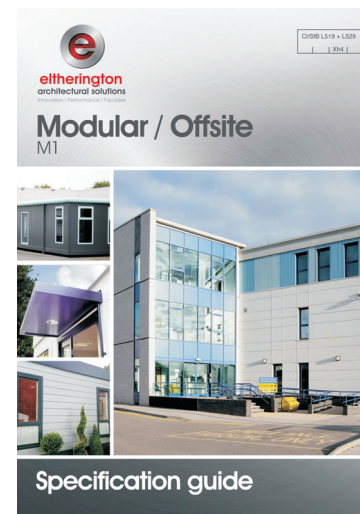
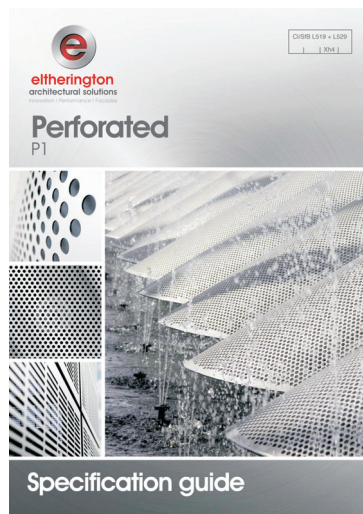
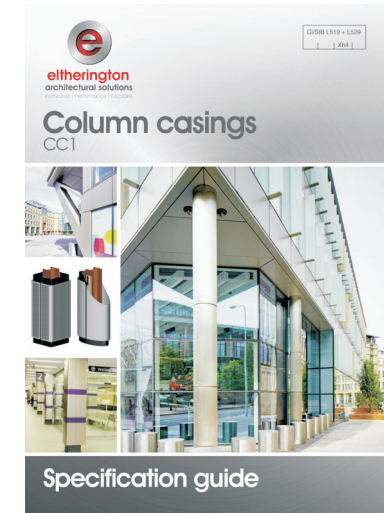
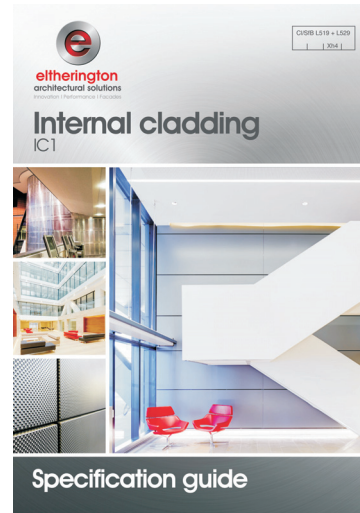
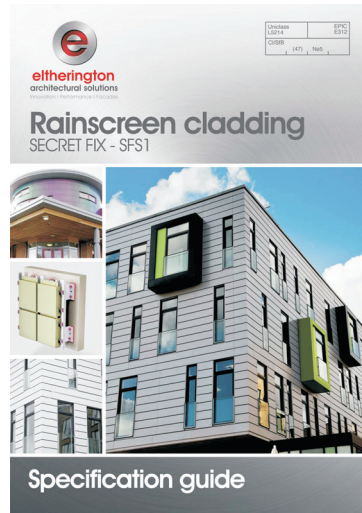
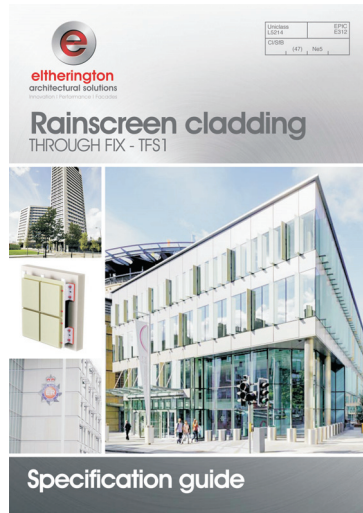
Hull Royal Infirmary Eye Clinic

Solutions

- PVCu windows and doors
- Integrated window shutters (insulated and un-insulated)
- Screens, grills and louvres
- Safety and security products
- Modular canopies
- Specialist / bespoke fabrications
- Cladding
- Bullnose fascia and soffit
- Aluminium extrusions
- PVCu cladding



Specification guides



Download at www.eltherington.co.uk or call 01 482 320336

Eltherington sector showcase

Education



- Corpus Christi College
- Menai College, Bangor
- Southfield Grange School
- Ulster University, Belfast
- University of Liverpool
- Southbank University
- Tresham College
- Matthew Boulton College
- Curved Bull Nose, Yorkshire
- Ridgewood School, Doncaster

Commercial



- Admiral Park, Dartford
- Cork Offices, Eire
- Edinburgh ICC
- LBBW Bank, Moscow
- St Paul's Place, Sheffield
- The Arc, Hull
- Hull Deep Sea Test Centre
- MTV Studios London
- Fire Rated Panels - Cork, Eire
- Cale Cross, Newcastle

Residential



- Bridgewater Place, Leeds
- Residential, Birmingham
- Kings Cross, London
- Haggerston, London
- Housing, Wick, Highlands
- Residential, Midlands
- Residential, Hull
- Calendar Park, Falkirk
- Southgate Road, London
- St Paul's, Sheffield

Retail



- Minories, London
- Victoria Shopping Centre
- Tesco, Coventry
- Bridgewater Place, Leeds
- Trinity Square, Leeds
- St Stephen's, Hull
- Arndale Centre, Manchester
- Monks Cross, York
- Deansgate, Manchester
- New Street, Birmingham

Public Sector



- Dundee City Council
- Greater Manchester Police HQ
- Military Training Centre, Oxen
- Freedom Centre, Hull
- Home Office, London
- Apartments, Birmingham
- Swimming Pool, Reading
- Westminster Magistrates' Court

Health



- Hull Royal Infirmary - Eye Clinic
- Hull Health Centre
- St Vincent's Hospital, Dublin
- Yorkshire Health Centres
- Sheffield Northern General
- Chelsea Hospital
- Sheffield Children's Hospital
- Royal Victoria, Belfast

Rail



- London Underground
- Sunderland Station
- Whitehall Road, Leeds
- Neville Street, Leeds
- Victoria Station, London
- Central Station, Glasgow
- Kings Cross, London
- Heathrow Airport

Hotels



- Crossways Point Hotel, Dartford
- Liverpool Hotel
- Bridgewater Place, Leeds
- Hilton Hotel, Manchester
- Tulip Hotel, Manchester
- Hilton Hotel, Luton
- St Paul's, Sheffield
- Hilton Hotel, Belfast

Download at www.eltherington.co.uk or call 01 482 320336



eltherington
architectural solutions
Innovation | Performance | Facades



Eltherington Aluminium Ltd, Dansom Lane South, Hull, East Yorkshire, HU8 7LA
T: 01482 320336 F: 01482 329956 E: info@eltherington.co.uk

www.eltherington.co.uk