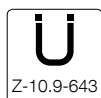


## **EJOT® Iso-Corner**

Approved fastening element for the planned retro-fitting of medium heavy to heavy attachments to ETICS facades

**EJOT® Iso-Corner**



**Product description**

The EJOT® Iso-Corner is an installation angle made of polyurethane hard foam for the planned attachment of add-on parts to ETIC systems.

Together with an anchor set that is tuned to the substrate, as well as an EJOT Delta PT 100 screw for fastening the attachment in the support element, this results in a perfectly coordinated fastening system on the installation angle.

**Application range**

For the planned retro-fitting of medium heavy to heavy attachments to ETICS facades.

**Application examples**

- Railings
- Guardrails
- Window and sliding shutters
- Consoles, f.e. for air conditioning units

**Benefits**

- One element / two installation surfaces
- Cut to length at the job site – the perfect adaptation to the surface
- Load application with a distance up to 20 mm to the installation surface permitted (bridging of non-load-bearing layers e. g. plaster)
- High reliability and load-carrying capacity with this building authorities approved system
- Reduces cold bridging through thermal decoupling
- Can be combined with special Iso-Corner fastening kits (facade anchor or chemical anchor system)
- Fixing the attachment with direct assembly: pre-drill / screw in / done
- Variable screw position and number for highest flexibility / adjustment to the attachment



EJOT® Iso-Corner video:  
<https://youtu.be/qY5IDZSAiK0>

**Technical Data**

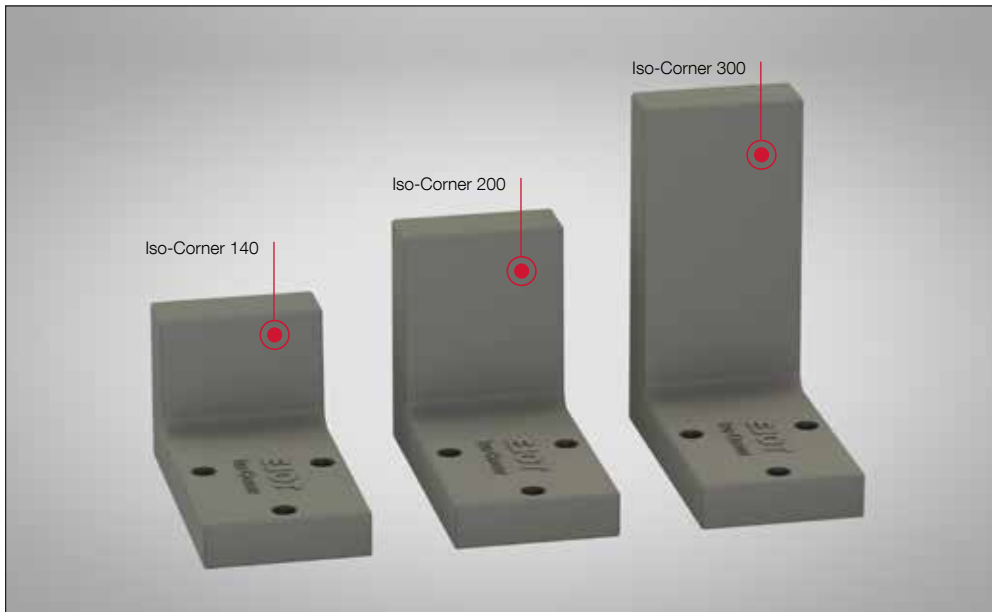
Base plate	140 x 270 mm
Total height EJOT Iso-Corner 140	140 mm
Total height EJOT Iso-Corner 200	200 mm
Total height EJOT Iso-Corner 300	300 mm

**Included in delivery**

Order description	PU	Article number
EJOT® Iso-Corner 140	1 pc.	8778 140 070
EJOT® Iso-Corner 200	1 pc.	8778 200 070
EJOT® Iso-Corner 300	1 pc.	8778 300 070

## EJOT® Iso-Corner cut to length

Flexibly applicable, no matter what the thickness of the insulating material



Thanks to the option of cutting to length on site a streamlined production programme can be achieved.

The EJOT® Iso-Corner is available in three lengths and even more flexible to apply as a result.



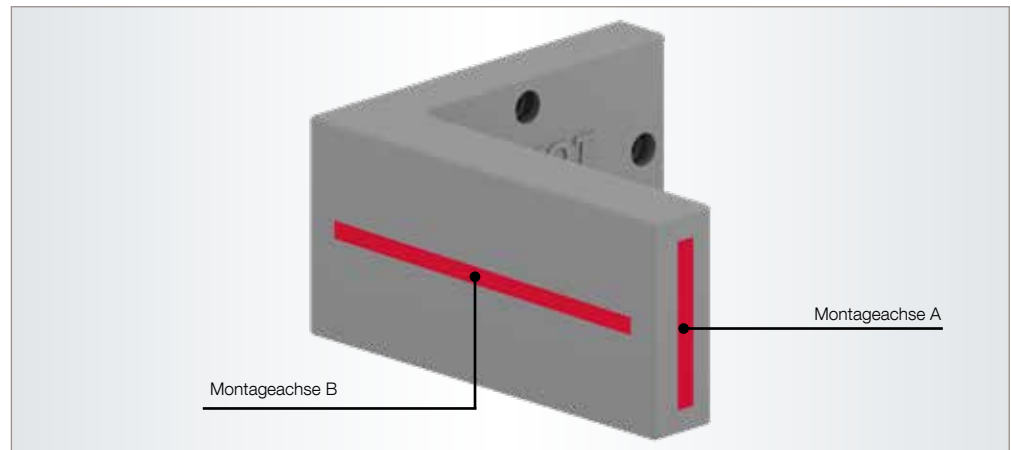
Precise cutting of the EJOT® Iso-Corner to length after the installation of the ETICS – can be implemented easily and flush to the upper edge of the insulation layer .

## Attachment of add-on parts

Direct assembly of add-on parts with EJOT® Delta PT 100x60

**Fixing:**

Flexible screw position and number long the axis while maintaining 20 mm edge distance:



**Option 1:**

Direct assembly on the installation axis of the front face of the EJOT® Iso-Corner with EJOT Delta PT®



**Option 2:**

Direct assembly on the installation axis of the side of the EJOT® Iso-Corner with EJOT Delta PT®



**EJOT® Iso-Corner Set Delta PT**

consisting of 2 pcs. EJOT Delta PT® 100x60/37 A4

Order description	PU	Article number
EJOT® Iso-Corner Set Delta PT	1 set	8 778 000 060

**Product description**

The EJOT Delta PT® screw included in delivery has been the benchmark in the automotive industry for reliable and easy direct assembly into plastics for many years.

**Application range**

For fastening add-on parts on EJOT® Iso-Corner

**Benefits**

- High load capacity direct fastening into plastic material
- Direct assembly saves time and work steps
- Easy installation
- High fatigue strength
- Safety due to high tensile and torsion strength as well as vibration resistance
- A wide range of possible tightening torques

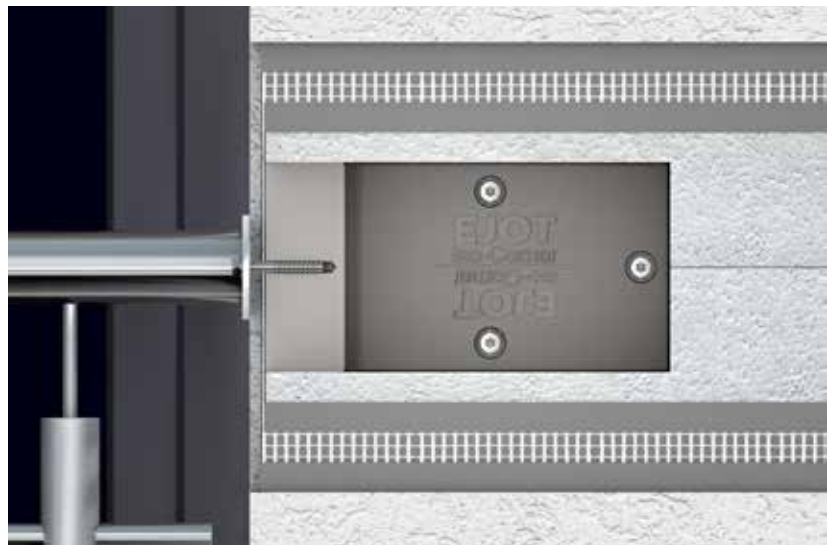
**Technical Data**

Core hole Ø	8 mm
Drill hole depth	≥ 40 mm
Screw drive	AF 13

**Load application**

The load can be applied directly to the installation surface or at a distance up to 20 mm and distinguishes itself from „conventional add-on parts“ as a result.

Sufficient compressive strength for the barrier sheet has to be assured.





**EJOT® Iso-Corner Kit SDF**

consisting of 3 pcs. EJOT® facade anchors SDF-KB-10H



Ø [mm]	Anchor length L [mm]	Tolerance compensation – non-load-bearing layers (adhesives, plasters, etc.) [mm]	PU	Order description	Article number
<b>Anchors with steel screws with zinc-plated Cr(VI)-free coating (-V)</b>					
10	100	0*	1 kit	<b>EJOT® Iso-Corner Kit SDF 100</b>	<b>8 513 100 423</b>
10	120	0 - 20	1 kit	<b>EJOT® Iso-Corner Kit SDF 120</b>	<b>8 513 120 423</b>
10	140	20 - 40	1 kit	<b>EJOT® Iso-Corner Kit SDF 140</b>	<b>8 513 140 423</b>

\*on flat surface areas

**Application range**

- For fastening the EJOT® Iso-Corner to concrete, rain screens, solid and perforated brick masonry

**Characteristics**

- Approved for all common building materials
- Reliable hold in problematic building material thanks to optimised expansion part
- Radial expansion for reliable hold
- Cr VI-free coating of the screw
- Double safety lock against torsion for secure installation

**Assembly**

- Core-drill hole at a right angle to the surface of the installation substrate. Choice of drilling method according to approval.
- The drill dust has to be removed from the hole.
- Hole depth at least 10 mm larger than the embedment depth.
- Push anchor sleeve in as far as the connecting surface in drill hole.
- Strictly adhere to minimum embedment depth according to chart!
- Screw enclosed special screw into the anchor sleeve as far as the connecting surface.

**Note**

Please observe European Technical Approval ETA-10/0305 in the planning and processing of products. Further information about parameters and loads can be found in the approval.

**Characteristic values**

Hole depth in concrete $h_{1,1}$	≥ 80 mm
Effective Embedment depth $h_{nom}$	≥ 70 mm
Drill hole diameter $d_0$	10 mm
Drive	AF13/T40

**Characteristic loads**

Tensile load $N_{Rk,0}$ in concrete C12/15	
Temperature range 30 °C / 50 °C	4.50 kN
Temperature range 50 °C / 80 °C	4.00 kN
Brick Mz 20-1.8, NF	4.00 kN
Solid sand-lime brick KS 36, NF	4.50 kN
Solid sand-lime brick KS 20, 8 DF	4.50 kN
Solid lightweight concrete brick V6, 2 DF	2.00 kN
Vertically perforated brick HLz 12-0.9, NF	2.00 kN
Perforated sand-lime brick KSL 12, 4 DF	2.50 kN
Cavity block made of lightweight concrete Hbl 10, 12 DF	1.20 kN
Transverse load $V_{Rk,S}$	
Anchor with steel screw	9.35 kN
Bending moment $M_{Rk,S}$	
Anchor with steel screw	17.67 Nm

**Accessories (optional)**

Order description	PU	Article number
Blow-out pump 8 mm	1	<b>9 150 300 000</b>
Cleaning brush 12	1	<b>9 150 300 012</b>



**EJOT® Iso-Corner Kit SDP**

consisting of 3 pcs. EJOT® facade anchors SDP-KB-10G



Ø [mm]	Anchor length L [mm]	Tolerance compensation – non-load-bearing layers (adhesives, plasters, etc.) [mm]	PU	Order description	Article number
<b>Anchors with steel screws with zinc-plated Cr(VI)-free coating (-V)</b>					
10	100	0*	1 kit	<b>EJOT® Iso-Corner Kit SDP 100</b>	<b>8 532 100 423</b>
10	120	0 - 20	1 kit	<b>EJOT® Iso-Corner Kit SDP 120</b>	<b>8 532 120 423</b>
10	140	20 - 40	1 kit	<b>EJOT® Iso-Corner Kit SDP 140</b>	<b>8 532 140 423</b>

\*on flat surface areas

**Application range**

- For fastening the EJOT® Iso-Corner to aerated concrete

**Characteristics**

- Facade anchor with two-stage screw
- Reliable form-fit in the substrate thanks to combined expansion zones
- High load capacity

**Assembly**

- Core-drill hole at a right angle to the surface of the installation substrate. Choice of drilling method according to approval.
- The drill dust has to be removed from the hole.
- Hole depth at least 10 mm larger than the embedment depth.
- Push anchor sleeve in as far as the connecting surface in drill hole.
- Strictly adhere to minimum embedment depth according to chart!
- Screw enclosed special screw into the the anchor sleeve as far as the connecting surface.

**Note**

For planning and processing, please observe approval ETA-12/0502.

**Characteristic values**

Drill hole depth $\geq t$	80 mm
Embedment depth $\geq h_v$	70 mm
Drill hole diameter $d_0$	10 mm
Drive	AF13/T40

**Characteristic values**

Compressive strength aerated concrete [N/mm <sup>2</sup> ]	
Aerated concrete 2	0.75 kN
Aerated concrete 3	1.31 kN
Aerated concrete 4	1.87 kN
Aerated concrete 6	3.00 kN
Partial safety factor $\gamma_{MAAC}$	2.00
Characteristic Bending moment	
Steel screw	17.7 Nm / $\gamma_{Ms}$ 1.50

**Accessories (optional)**

Order description	PU	Article number
Blow-out pump 8 mm	1	9 150 300 000
Cleaning brush 12	1	9 150 300 012

**EJOT® Iso-Corner Kit Injektion**

consisting of 3 pcs. anchor rods AST and 3 pcs. mesh sleeves USF

Order description	PU	Article number
EJOT® Iso-Corner Kit Injektion consisting of 3 pcs. anchor rods AST M10x170-V and 3 pcs. mesh sleeves USF 16x85	1 kit	8 778 000 170



**Anchor rod AST**

approved for polyester and vinyl ester composite mortar

**Application range**

- For embedment in concrete and solid brick
- For embedment in perforated brick in combination with mesh sleeve

**Properties of AST steel**

- Anchor rod: strength grade 5.8 or 6.8 acc. to EN ISO 898-1
- Nut: strength grade 5 or 6 acc. to EN 20898-2
- Washer: acc. to EN ISO 7089

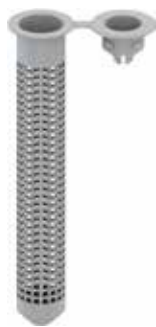
**Note**

To determine the characteristic load capacity in concrete, approval **ETA-16/0107** has to be considered. To determine the characteristic load capacity in solid and perforated brick, approval **ETA-16/0089** has to be considered.

Embedment depth $h_{ef}$	
Concrete	≥ 60 mm
Solid brick masonry	90 mm
Perforated brick masonry*	85 mm

Drill hole diameter $d_0$	
Concrete	12 mm
Solid brick masonry	12 mm
Perforated brick masonry*	16 mm

\*When using the mesh sleeve USF 16x85



**Mesh sleeve USF**



**Application range**

- For embedment in perforated brick

**Characteristics**

- Guarantees exact calibration of threaded rod

**Note**

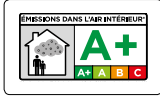
Please observe the corresponding approvals during planning and processing.

**Accessories (optional)**

Order description	Applications	PU	Article number
Applicator gun AP 300 ml		1	9 570 010 300
Blow-out pump 8 mm	Facade anchors	1	9 150 300 000
Cleaning brush 14	without mesh sleeve	1	9 150 300 014
Cleaning brush 18	with mesh sleeve	1	9 150 300 018

**Mortar cartridge USF**

Vinyl resin, styrene-free



Order description	Content [ml]	Composite mortar	PU	Article number
Multifix USF 280 ml	280	Vinyl resin, styrene-free	1	9 571 000 280

**Application range**

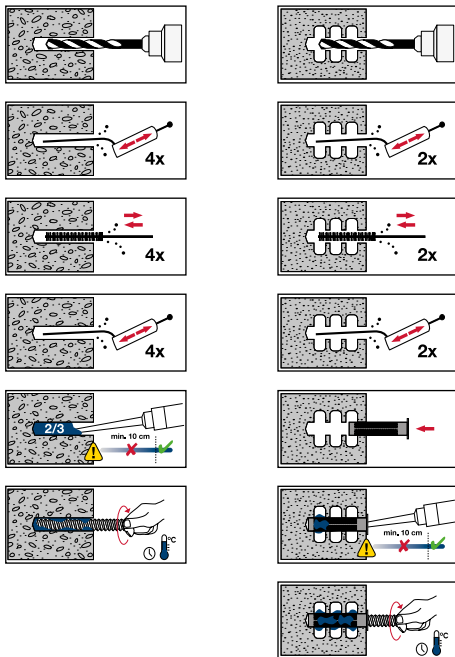
- For installation in cracked concrete (option 1) and non-cracked concrete (option 7) (ETA-16/0107)
- For installation in masonry (ETA-16/0089)
- For installation in natural stone (without approval)

**Benefits**

- Processing with common applicator gun possible
- Can be used in wet concrete and water-filled drill holes
- Delivery including mixing nozzle

**Note**

Please observe the corresponding approvals during planning and processing.  
Winter version upon request



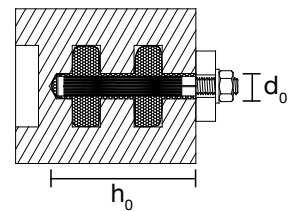
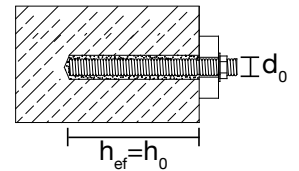
**Installation parameters**

Anchor rod	d <sub>0</sub> [mm]	h <sub>ef</sub> = h <sub>0</sub> min - max [mm]
M10	12	60 - 200

**Installation parameters / consumption in perforated building materials\***

Mesh sleeve	Anchor rod	d <sub>0</sub> [mm]	h <sub>0</sub> [mm]	Number of fills
USF 16x85	M10	16	90	11

\*Filling of the mesh sleeve complete + 15%



**Processing time and minimum curing time**

°C			
-10*	1h 30'	24h	48h
≥ -5	1h 30'	14h	28h
≥ 0	45'	7h	14h
≥ +5	25'	2h	4h
≥ +10	15'	1h 20'	2h 40'
≥ +20	6'	45'	1h 30'
≥ +30	4'	25'	50'
≥ +35	2'	20'	40'
+40	1.5'	15'	30'

\*Min. cartridge temperature +15 °C

**Iso-Corner**

Order description	PU	Article number
EJOT® Iso-Corner 140	1 pc.	8778 140 070
EJOT® Iso-Corner 200	1 pc.	8778 200 070
EJOT® Iso-Corner 300	1 pc.	8778 300 070

Order description	PU	Article number
EJOT® Iso-Corner Set Delta PT	1 set	8 778 000 060

**Accessories**

Order description	Ø [mm]	Anchor length L [mm]	Tolerance compensation – non-load-bearing layers (adhesives, plasters, etc.) [mm]	PU	Article number
<b>Anchors with steel screws with zinc-plated Cr(VI)-free coating (-V)</b>					
EJOT® Iso-Corner Kit SDF 100	10	100	0*	1 kit	8 513 100 423
EJOT® Iso-Corner Kit SDF 120	10	120	0 - 20	1 kit	8 513 120 423
EJOT® Iso-Corner Kit SDF 140	10	140	20 - 40	1 kit	8 513 140 423

\*on flat surface areas

Order description	Ø [mm]	Anchor length L [mm]	Tolerance compensation – non-load-bearing layers (adhesives, plasters, etc.) [mm]	PU	Article number
<b>Anchors with steel screws with zinc-plated Cr(VI)-free coating (-V)</b>					
EJOT® Iso-Corner Kit SDP 100	10	100	0*	1 kit	8 532 100 423
EJOT® Iso-Corner Kit SDP 120	10	120	0 - 20	1 kit	8 532 120 423
EJOT® Iso-Corner Kit SDP 140	10	140	20 - 40	1 kit	8 532 140 423

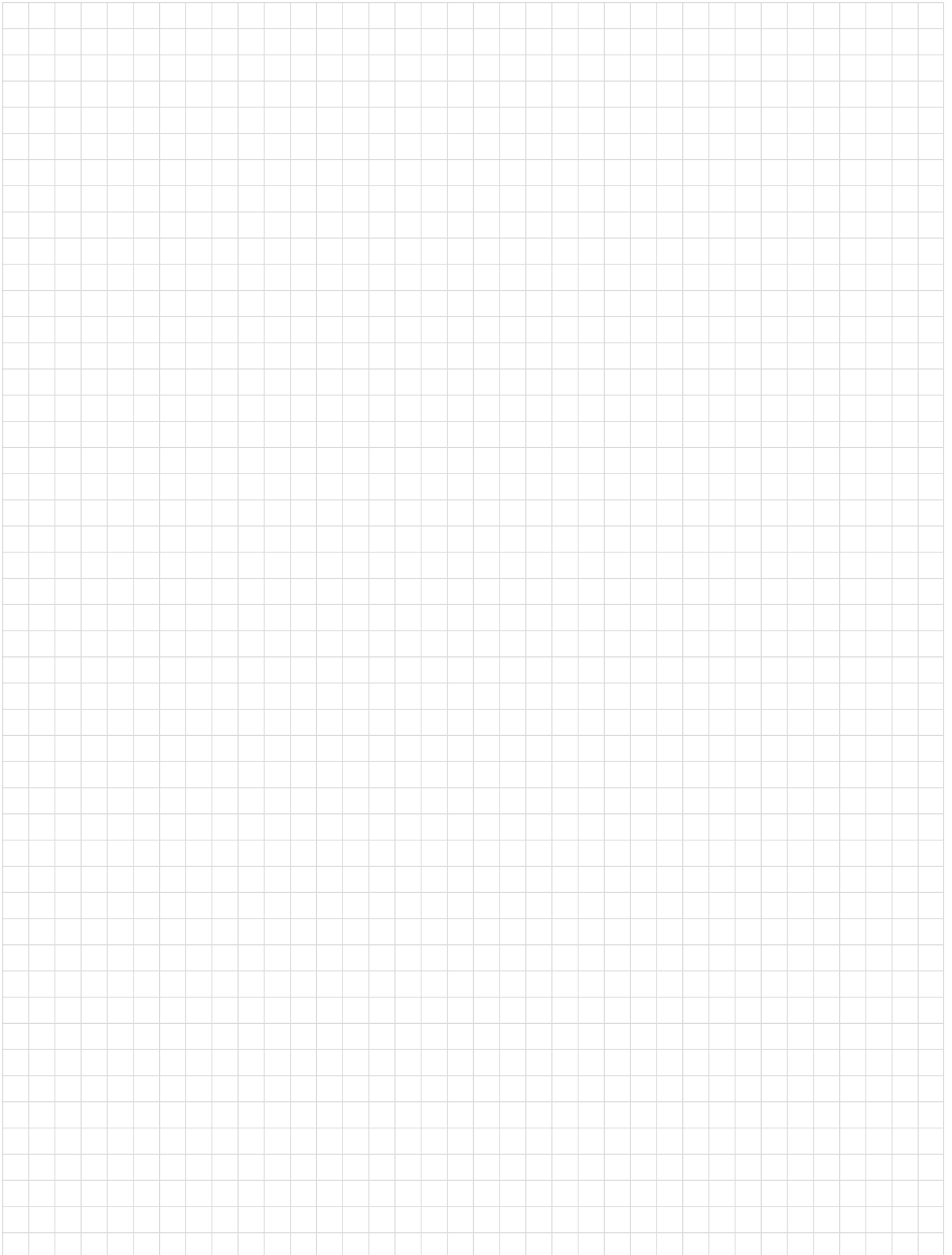
\*on flat surface areas

Order description	PU	Article number
EJOT® Iso-Corner Kit Injection consisting of 3 pcs. anchor rods AST M10x170-V and 3 pcs. mesh sleeves USF 16x85	1 kit	8 778 000 170

Order description	Content [ml]	Composite mortar	PU	Article number
Multifix USF 280 ml	280	Vinyl resin, styrene-free	1 pc.	9 571 000 280

**Optional accessories**

Order description	Applications	PU	Article number
Applicator gun AP 300 ml		1	9 570 010 300
Blow-out pump 8 mm		1	9 150 300 000
Cleaning brush 12	Facade anchors	1	9 150 300 012
Cleaning brush 14	without mesh sleeve	1	9 150 300 014
Cleaning brush 18	with mesh sleeve	1	9 150 300 018





**EJOT Baubefestigungen GmbH**

In der Stockwiese 35

D-57334 Bad Laasphe

Phone: +49 2752 908-0

Fax: +49 2752 908-731

E-Mail: [bau@ejot.com](mailto:bau@ejot.com)

Website: [www.ejot.com](http://www.ejot.com)