

5 10 023 011 00

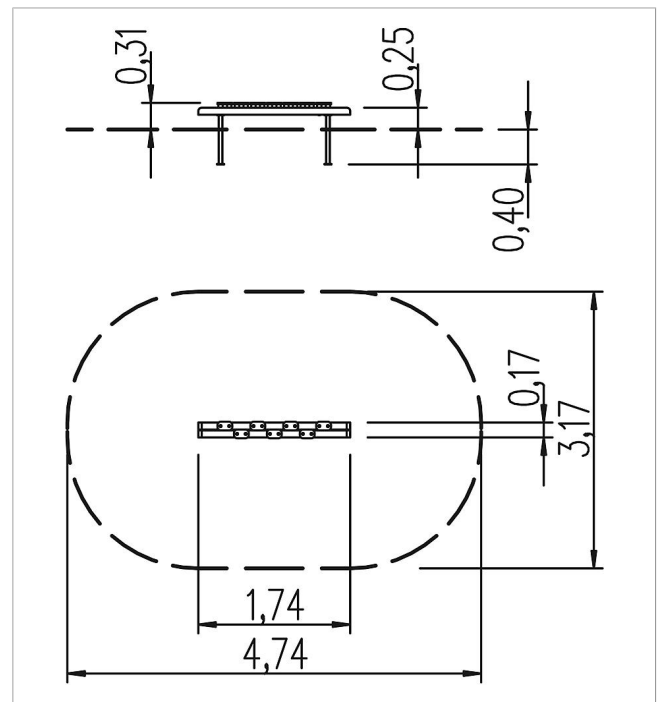
playo balancing station Terrapedi


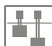






made in germany



Scope of delivery

1x balancing beam with wobbly foot prints: SW, HPL, rubber
set of post shoes: galvanised steel



	Material	SW pi
	Foundation level	FL 1
	Minimum space	4,74x3,17x2,11 m
	Free falling height	31 cm
	Impact protection net	-
	Foundations	2x CF or 2x PFs
	Assembly	1 person/1.5 h
	Largest section	174x8x8 cm
	Heaviest section	20 kg