

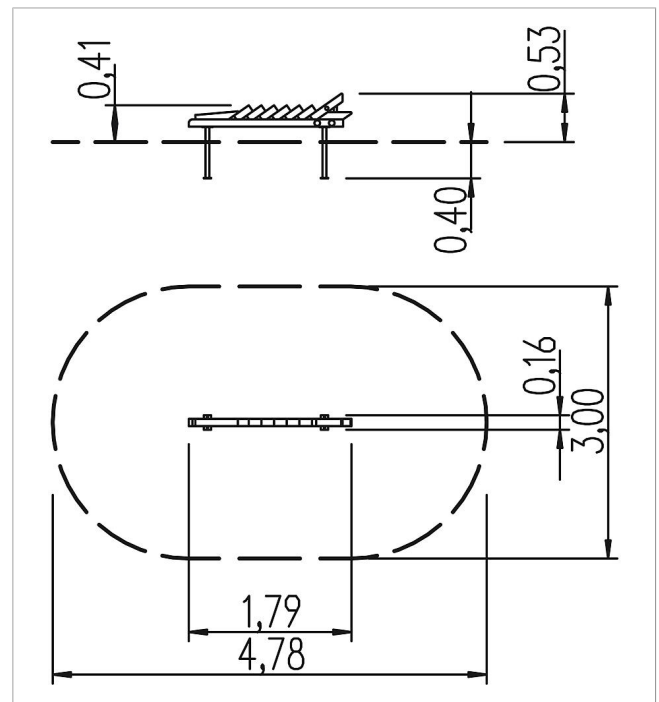
5 10 021 011 00


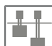







**playo balancing  
station  
Terracocodrillo**  
made in germany



**Scope of delivery**

1x balancing crocodile: SW  
set of post shoes: galvanised steel



	Material	SW pi
	Foundation level	FL 1
	Minimum space	4,78x3,00x2,33 m
	Free falling height	53 cm
	Impact protection net	-
	Foundations	2x CF or 2x PFs
	Assembly	1 person/1.5 h
	Largest section	179x35x8 cm
	Heaviest section	50 kg